



ALAMAYAH

*Suites*



## *Our Village*

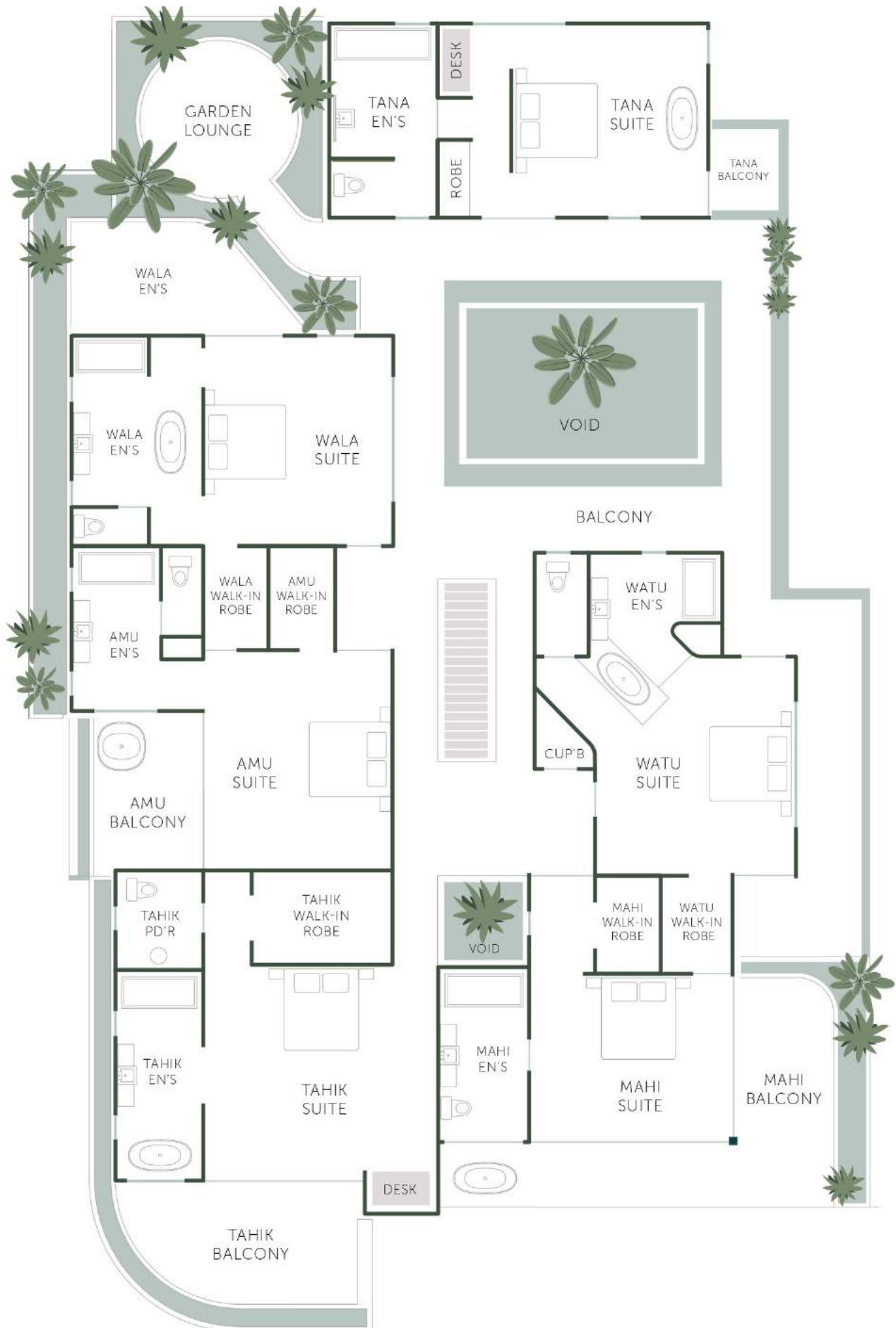
Alamayah is located in the south-western part of Sumba, in a beach side fishing village called Kerewe. This district in Sumba is widely known for being one of the most picturesque. It still holds strong culture, mountainous jungle landscape and some of its most beautiful beaches. Alamayah's surrounding area offers an abundance of gifts to travelers searching for raw and untouched destinations. There is never a need to travel far from Alamayahs central location, with some of the most famous tourist destinations in Sumba only minutes away. A short stroll will see you wander onto picturesque, pristine white sand beaches, its hidden caves, waterfalls, delve into ancient culture, ride its untouched waves, or witness a wild buffalo basking in the salty shallows. Lamboya is our hidden escape; one that we are honored to share with you. We have created Alamayah as a brush that paints everlasting memories in the minds and hearts of our guests. An experience that continues to bloom even after our guests return home.

**A holiday where travelers can finally breathe in freedom.**



# Alamayah

## Room layout



# Ocean View Suites

**Tahik Suite** - IDR3.5jt per night inc. daily breakfast

Enjoy views over the Timor Sea from the luxury of your bed in Tahik, our Master suite

## More About This Suite

- 62m<sup>2</sup> room
- 18m<sup>2</sup> private terrace built around a coconut tree
- ocean views
- king size bed
- en-suite with internal Free standing terrazzo bathtub
- separate powder room
- executive sized walk-in robe with lounge and mini bar
- work desk
- organic coffee & tea station
- air-conditioning
- wifi
- farm to table breakfast (non. alcoholic)

We've woven our natural environment into your personal sanctuary where a decades-old coconut tree stands tall, rising through your private terrace. Enjoy sunrise views from bed surrounded by naturally earthy hues, highlighting the graceful outlines of rustic teak wood furniture, reclaimed Ulin timber floors, and rattan finishes.



\*prices are subject to 10% government & 11% service tax



# Ocean View Suites

**Mahi Suite** - IDR3.5jt per night inc. daily breakfast

Enjoy views over the Timor Sea from the luxury of your bed in Tahik, our Master suite

## More About This Suite

- 43m<sup>2</sup> room
- 25m<sup>2</sup> private terrace
- Connecting door to Watu suite
- ocean views
- king bed
- ocean view from bathtub on private terrace
- en-suite washroom
- walk-in wardrobe
- organic coffee & tea station
- air-conditioning
- wifi
- farm to table breakfast (non. alcoholic)

Float to 180 degree views of the sunrise over the ocean, dancing tides and starry skies from the private terrace's open air tub.



\*prices are subject to 10% government & 11% service tax



# Deluxe Suites

Amu Suite - IDR3.0jt per night inc. daily breakfast

## More About This Suite

- 45m<sup>2</sup> room
- 12m<sup>2</sup> private terrace
- Connecting door to Wala suite
- king size bed
- extra large free-standing bathtub on private terrace
- En-Suite Washroom
- enclosed w.c.
- walk-in wardrobe
- organic coffee & tea station
- air-conditioning
- wifi
- farm to table breakfast (non. alcoholic)

In Amu, you are free to float with views of the dancing tides and starry skies from the private terrace's extra large open-air free-standing bathtub and ocean views, followed by a perfect night's sleep wrapped in pure cotton linen.



\*prices are subject to 10% government & 11% service tax

# Deluxe Suites

Wala Suite - IDR3.0jt per night inc. daily breakfast

## More About This Suite

- 46m<sup>2</sup> room
- 15m<sup>2</sup> private terrace
- Connecting door to Amu suite
- jungle views
- king size bed
- en-Suite with free-standing terazzo bathtub
- enclosed w.c.
- organic coffee & tea station
- air-conditioning
- wifi
- farm to table breakfast (non. alcoholic)

A large private terrace bordering Wala provides partial jungle and sea views with the comfort of an intimate dining area. This room is a harmonious blend of opulence, luxury and nature, something you would never expect to find in Sumba



\*prices are subject to 10% government & 11% service tax



# Deluxe Suites

Watu Suite - IDR3.0jt per night inc. daily breakfast

## More About This Suite

- 44m<sup>2</sup> room
- 24m<sup>2</sup> private terrace with ocean views
- connecting door to Mahi suite
- jungle views
- king size bed
- en-suite bathroom
- enclosed w.c.
- walk-in wardrobe
- organic coffee & tea station
- air-conditioning
- wifi
- farm to table breakfast (non. alcoholic)



Watu's unique architecture features a free standing bathtub, curved walls and a beautiful picture frame window over the Sumba landscape. Ocean views from your balcony, take pleasure in this sublime experience for the senses.



\*prices are subject to 10% government & 11% service tax



# Deluxe Suites

Tana Suite - IDR3.0jt per night inc. daily breakfast

Rest under the magnificent hand crafted Sumbanese thatch roof to views from bed of lush jungle hills. Tana's handcrafted precision and artisanal detailing is a wonder to behold.

## More About This Suite

- 45m<sup>2</sup> room
- 3m<sup>2</sup> private terrace
- jungle/village view
- king bed
- free-standing terazzo bathtub in room
- en-Suite washroom
- organic coffee & tea station
- work desk
- mosquito net
- air-conditioning
- wifi
- farm to table breakfast (non. alcoholic)

Natural materials woven with traditional design invoke deep rest thanks to a warm, earthy palette and mindfully crafted furniture. Relax in your private lounge area's free-standing tub and take pleasure in this sublime experience for the senses.



\*prices are subject to 10% government & 11% service tax