



#### ISLAND

t +248 422 97 00

e [info@bluesafari.com](mailto:info@bluesafari.com)

#### RESERVATIONS

e [reservations@bluesafari.com](mailto:reservations@bluesafari.com)

Blue Safari Seychelles

P O Box 378, Victoria, Mahé

Republic of Seychelles

[www.facebook.com/Blue.Safari.Seychelles/](https://www.facebook.com/Blue.Safari.Seychelles/)

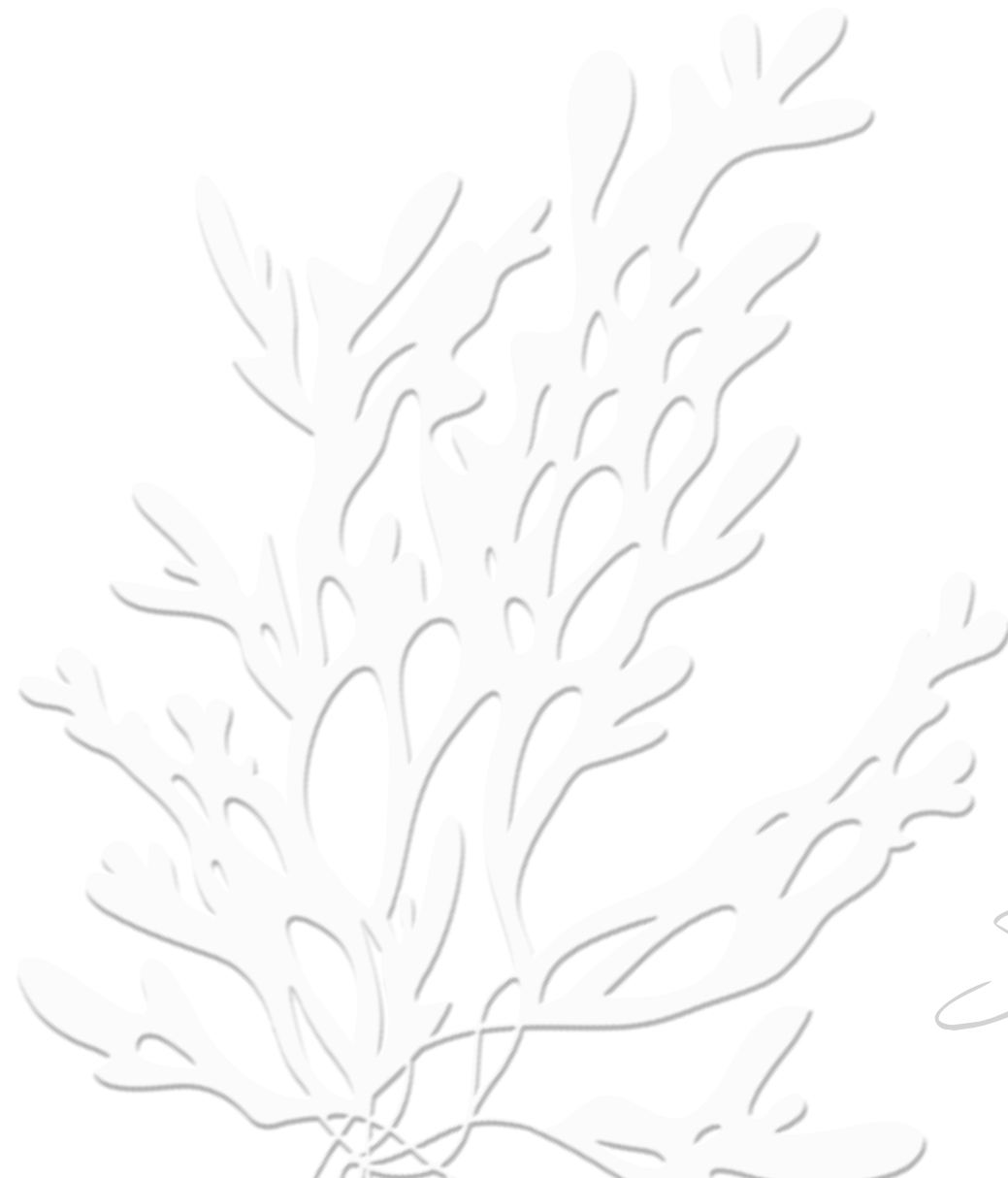
Instagram: [bluesafariseychelles](https://www.instagram.com/bluesafariseychelles)

[www.bluesafari.com](http://www.bluesafari.com)



**Traveller Made**  
*Hotel Partner*

LAYOUT: BLUE HUE DESIGNS



## A Remote and Pristine Paradise...

These magnificent islands and atolls, consisting of the Alphonse Group of Islands – the stunning trio of Alphonse Island, St François Island and Bijoutier Island and the other beautiful atolls of Cosmoledo Atoll, Astove Atoll, Poivre Atoll and the resplendent Amirante Islands are found south of the equator in the heart of the Indian Ocean. These range between 400 and 1 055 kilometres south-west of Mahé, the main island of the Seychelles.

They are blessed with one of the world's healthiest climates, with miles of unblemished shorelines, lagoons and sea flats. The isolation of these islands and atolls creates an atmosphere of undisturbed solitude where you can immerse yourself in the natural wonders and exceptional experiences they have to offer.

Considered some of the untouched Edens of the world, these outer islands and atolls of the Seychelles have an unparalleled biome of diversity and abundance, making them a nature lover's paradise which begs to be discovered and explored.

THE SHEER REMOTENESS OF THE OUTER ISLANDS ARE ABUNDANT WITH AN EXTRAORDINARY SELECTION OF WILDLIFE, FLORA AND FAUNA, CULMINATING IN AN UNPARALLELED BIOME OF DIVERSITY.







## *Created by Nature, Designed by You...*

What is Blue Safari Seychelles? Safari is a Swahili word taken from the Arabic, safar 'to journey'. Blue is the predominant colour in the area, and if it's your time to journey into the unknown; to seek out excitement and adventure, to walk amongst mangroves, free-living giant land tortoises and wild spaces, then read on...

Blue Safari Seychelles is a journey like no other, allowing the most remote and pristine outer islands and atolls of the Seychelles to be explored... Blue Safari Seychelles will not only protect and conserve the ecosystems of these captivating islands and atolls, it will also revolutionise experiential travel.

Discover the magnificence of Alphonse, Cosmoledo, Astove, Poivre and the Amirante Islands by air, land and ocean. Be led by our team of expert rangers, marine biologists, dive masters, fly fishing guides, boat captains, conservationists and ecologists. Blue Safari Seychelles is an exceptional concept with diverse and exceptional experiences.

Overlooking the soft, white-sand beaches, lush gardens and dazzling azure waters of the Indian Ocean, all accommodations are created to ensure a tranquil and restful atmosphere. Blue Safari Seychelles enables guests to completely switch off. The modern-day connectivity of electronic devices and smartphones are replaced by the interconnectivity with the natural surroundings and loved ones.

THIS TRULY IS PARADISE PERFECTED!

*Taking Memories Away, Leaving Nothing Behind...*



*Experiences are Our Luxury...*

OUR PHILOSOPHY PERFECTLY BLENDS SUSTAINABLE  
TOURISM AND DISTINCTIVE ACCOMMODATION  
WITH EXCEPTIONAL EXPERIENCES.









## Immerse Yourself...

### IN NATURE: ON LAND AND IN THE OCEAN

The outer islands and atolls of the Seychelles are rich in flora and fauna, with an assorted array of aquatic mammals, reptiles and fish. Blue Safari Seychelles will enable guests to explore and discover the diverse wildlife and environments that exists on these incredible islands and atolls.

Varying species of birds (close to 188 different types) have been recorded on the islands and atolls of Alphonse, Cosmoledo, Astove and Poivre. These habitats are home to a plentiful selection of seabirds and waders and form part of the 20 dedicated ornithology areas in the Seychelles.

Blue Safari Seychelles enables guests to encounter the giant Aldabra tortoises (the oldest living creatures on earth) in their natural surroundings. Whilst swimming in the Indian Ocean, guests can observe hawksbill and green turtles that populate the crystal clear, azure waters. These magnificent creatures often nest year round on the beaches of Alphonse, Cosmoledo, Astove and Poivre.

The waters surrounding the islands and atolls are abundant with shoals of brightly coloured fish and aquatic mammals. Here, you can see over 1 000 different species of fish, and be amazed as you view manta rays, pods of spinner dolphins, blue and melon-headed whales in their natural habitat.



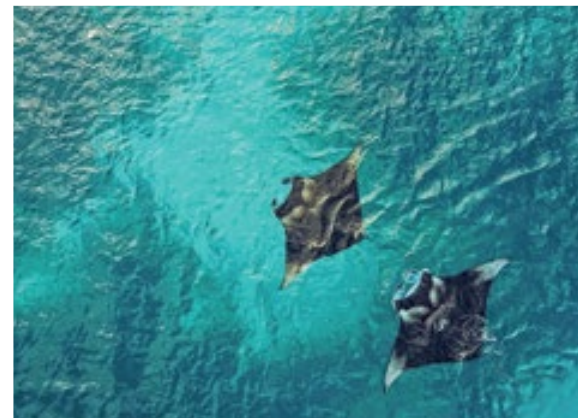


## Discover...

Travel by boat to discover the smaller islands that make up these magnificent atolls. Snorkel in the azure waters and observe the plethora of turtles, rays, fish and various other sea creatures which make these fisheries their home. Experience a dining destination like no other on the dazzling white sand flats.

Explore the islands and atolls by foot and learn about the ecosystems, wild-life, flora and fauna with one of our knowledgeable marine biologists. Join the Island Conservation (ICS) team on their daily surveys to track and monitor turtles and their hatchlings, tortoises and birds that inhabit the islands and atolls, or simply enjoy exploring on your own.

Blue Safari Seychelles offers a world of adventure whilst providing the perfect setting to relax and unwind as you absorb the authentic spirit of the islands in stunning surroundings.







## *Exceptional Experiences*

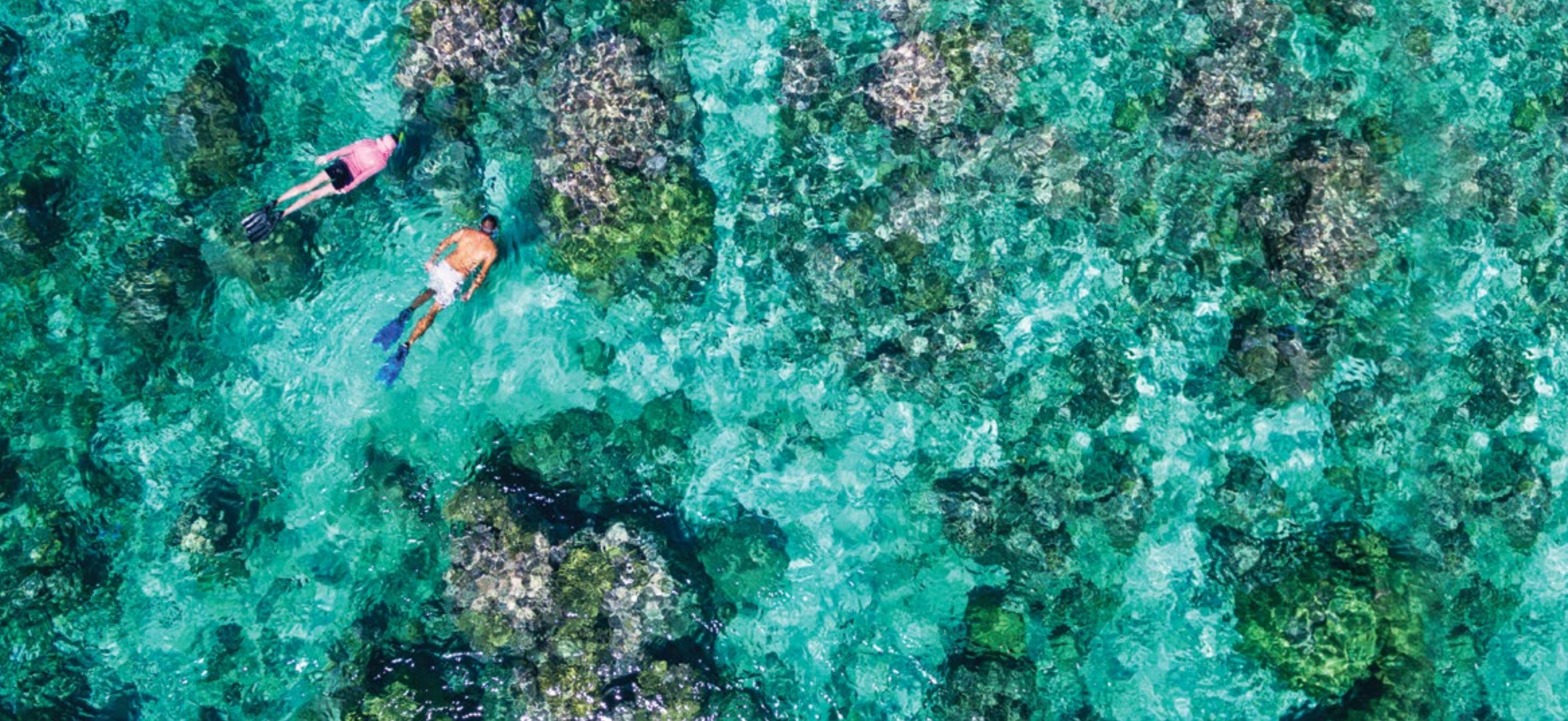
### THE TRUE ESSENCE OF BLUE SAFARI SEYCHELLES

The remoteness of these islands and atolls, combined with the diverse ecosystems of each, enables guests to immerse themselves in the extraordinary natural beauty that exists here. Mother Nature has created an exceptional, exotic paradise, encapsulating the genuine spirit of the Seychelles – a true nirvana for those who love the great outdoors, wildlife, flora and for thalassophiles.

The expanse of the Indian Ocean that surrounds the islands and atolls is home to an underwater world that inspires and excites. Marvel at coral reefs teeming with striking, colourful creatures, be awe-struck by gigantic sea fans and walls of thriving ecosystems. The cracks and crevices in the reefs are home to a plethora of eels, shrimps and sleeping sharks. These flourishing ocean territories are also favoured by larger species of pelagic fish, both docile and predators alike.

For those who seek the extraordinary, Blue Safari Seychelles offers both exhilarating and relaxing experiences.





## Close Encounters

### THE BEST SNORKELLING SITES IN THE SEYCHELLES

Non-divers can enjoy the abundant and colourful sea life on snorkelling safaris. Our snorkelling destinations are home to an array of stunning marine species, untouched coral reefs and exceptional underwater scenery. The snorkelling sites around the islands and atolls offer wonderful experiences at different depths.

The different islands and atolls allow for great snorkelling opportunities and the chance to view and snorkel with turtles, manta rays and sailfish – simply sensational!









# Underwater Wonderland

## THE GREATEST DIVING ON THE PLANET

With a wide variety of dive sites waiting to be explored, the outer islands and atolls of the Seychelles are the ultimate destination for divers. Mammals, reptiles, sharks and shoals of technicoloured fish in large numbers, attract divers of all levels and famed underwater photographers from across the globe who wish to capture the diverse aquatic life.

Remarkably different dive sites with sheer drop-offs covered in soft corals and expansive hard coral plateaus are home to exceptionally healthy and varied fish populations. The wide range of marine territories all contribute to the fantastically diverse ecosystem and create a mesmerising spectacle for any underwater enthusiast.

Whether you are a seasoned SCUBA diver or wanting to dive for the first time, Blue Safari Seychelles has everything you need. A dynamic and highly experienced team with years of diving experience and a vast knowledge of the sites in the Seychelles, will expertly guide and seek out the best dive sites for you and will ensure your marine experience is personal, safe and unforgettable.







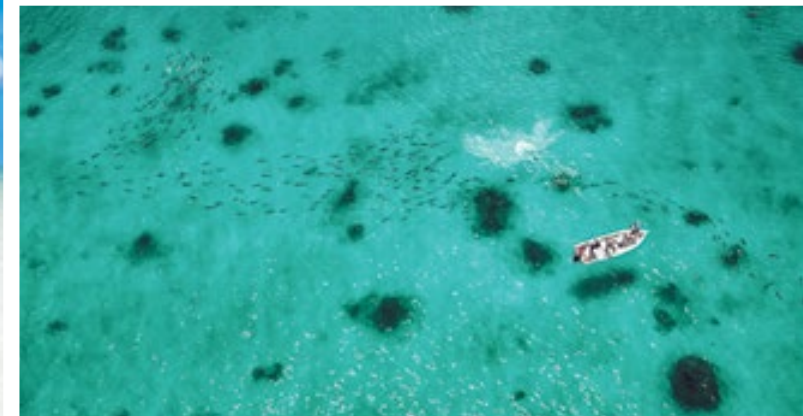
## Fly Fishing

### SIMPLY THE BEST IN THE WORLD

Considered a fly anglers paradise, the expansive flats surrounding these islands and atolls provide an experience of a lifetime. Tens of thousands of acres of pure and pristine sand flats provide easy wading and world class site fishing.

The islands and atolls are home to astoundingly large populations of bonefish, three types of triggerfish, indo-pacific permit, giant trevally, bluefin trevally, golden trevally, brassy trevally, yellow-dot trevally, barracuda, snapper, grouper, parrotfish and the incomparable milkfish.

To guarantee guests the ultimate fishing experience, an international team of guides, boat captains and qualified managers are on hand to share their passion for this unique fishery and its environment. Blue Safari Seychelles practices a strict catch and release policy for all fish caught on the flats and has various monitoring and research programs in place to ensure these islands and atolls are fished responsibly and remain pristine and wild.







## Blue Water Fishing

The unspoilt waters of the outer islands and atolls of the Seychelles are home to the most incredible variety of blue water fish species, translating into a great destination for offshore fishing. The structure and sheer drop-offs are ideal for attracting a variety of pelagic species such as sailfish, wahoo, dogtooth tuna, yellowfin tuna and dorado that can be challenged on any given day.

Due to our conservation policy no conventional angling is permitted inside the lagoon, next to, or on the reef that surrounds our majestic paradise. This helps preserve the marine life.







## Alphonse Island

Alphonse Island is the starting point for exploring the islands and atolls that form the amazing experiential concept that is Blue Safari Seychelles. Located 400 kilometres south-west of the mainland of Mahé, Alphonse Island is reached by a one-hour flight from Mahé. It is part of the Alphonse Group of Islands, which also includes the wildlife haven of St François (home to red-footed boobies, frigates and wild mangroves) and the petite, yet stunning island of Bijoutier.

First recorded in 1562, the history of these islands tells the change from the production of fruits and vegetables to the present day, exotic paradise. Once in the ownership of merchants, Mauritian families and the British Government, Alphonse Island is now known for its commitment to the environment and devotion to conservation. Alphonse is the very first island in the Seychelles to become reliant on solar power and go completely 'off the grid' thus reducing the island's emissions by 718 tonnes per annum.

Due to its remote location, the Alphonse Group of Islands are host to a variety of native vegetation, stunning animal life and outstanding marine life that call the surrounding azure waters their home. Green and hawksbill turtles lay their eggs along the white shores, and with over 130 bird species recorded, guests can expect glimpses of red-footed boobies, greater and lesser frigates, wedge-tailed shearwaters, black-naked terns, crab plovers and brown and lesser noddies to name just a few. The island is also home to free roaming Aldabra giant tortoises.



ALPHONSE IS SURROUNDED BY THE AZURE WATERS OF THE INDIAN OCEAN AND IS FRINGED BY DAZZLING WHITE, SANDY BEACHES, WITH STYLISH ACCOMMODATION. A WEALTH OF EXPERIENCES CAN BE ENCOUNTERED ON LAND AND IN THE OCEAN. ALPHONSE IS YOUR COMPLETE ISLAND PARADISE!









## Barefoot Luxury

Alphonse Island is nothing short of exceptional. Offering a tropical haven, perfect for unwinding and relaxing whilst also delivering extraordinary land and aquatic based adventures. A complete island experience, guests can do as much, or as little as they desire.

The central dining and bar area allows guests to socialize either by the sparkling pool or shore-line and offers the very best of traditional Creole cooking, inspired by the island atmosphere. Fresh produce straight from the island's farm and freshly caught fish are always on the menu. Diversity is key, and daily dishes include Asian inspired cuisine and sensational sashimi, complemented by a comprehensive wine list.

The activity centre and 5-star accredited PADI dive centre on Alphonse is the hub for marine-based excursions, diving and snorkelling. The fully equipped fishing centre and fly shop is well stocked with flies, rods and reels, as well as specially designed clothing, exclusive to Alphonse Island. The Azure Spa is the perfect place to relax and revive weary bodies and the boutique has plenty crafts and jewellery, inspired by the beauty of the Seychelles.

Freedom of movement around the island on foot or bicycle permits self-discovery of the wonders of this special place.





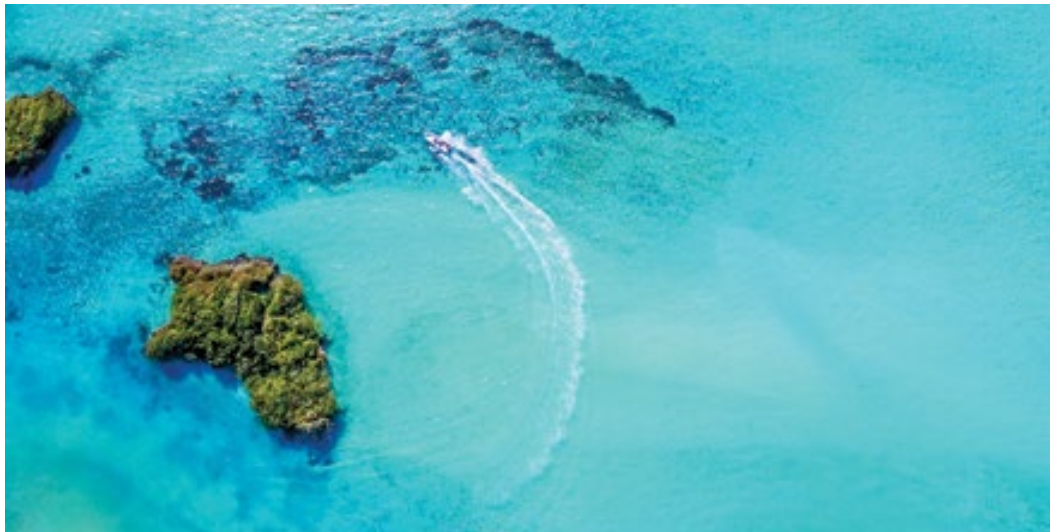


## *Spoilt for Choice*

Accommodation at Alphonse Island has been thoughtfully designed to blend in with the natural environment. Built beside the water's edge, with scenic ocean views and nestled amongst lush tropical plantations on the eastern shoreline, the Suites, Bungalows and Villas are decorated in hues that complement the island. The raised Beach Bungalows each have an outdoor shower, a separate bathroom and a bedroom with veranda. The Beach Suites are spacious, with a living area, private infinity pool and mezzanine bedroom. An expansive sun terrace is perfect for enjoying a morning coffee or relaxing with a cocktail in the evening. The Beach Villas each have four spacious double bedrooms, all with private en-suite bathrooms and the expansive living and dining areas are perfect for families or for sharing with friends and loved ones. A central private pool with wrap-around sun deck is the idyllic spot for relaxing whilst the waves of the Indian Ocean provide the dreamiest natural soundtrack.







## Cosmoledo Atoll

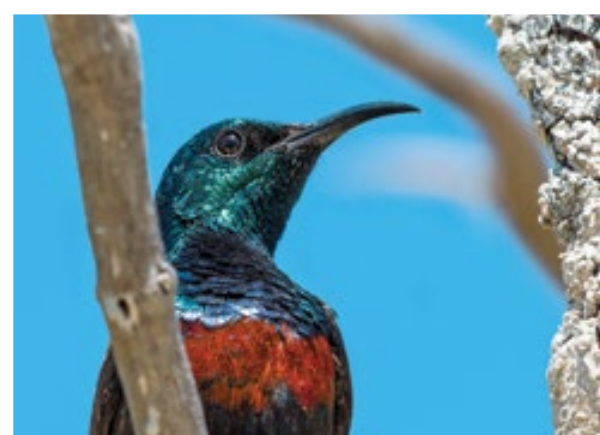
Located 1 030 km (560 nautical miles) south-west of Mahé, Cosmoledo Atoll is situated a stone's throw away from the world heritage site of Aldabra. Measuring 17 km from north to south, it is one of the largest atolls. Menai and Wizard Islands occupy the eastern and western points of the atoll and South Island stands near the main entrance to the inner lagoon. The perimeter of the atoll is covered with vast sand flats dotted with over 20 islands, islets and cays of various shapes and sizes. Cosmoledo Atoll is truly a nature lover's paradise of incomprehensible proportions. Its outstanding seabird colonies, and migratory waders led to its designation as an important bird area by Birdlife International.

The atoll was named after a Portuguese navigator who was part of João da Nova's crew, and the islands of Menai and Wizard were named after ships that explored the atoll during the Moreby Expedition in 1822.



COSMOLEDO HAS AN UNTOUCHED ECOSYSTEM THAT BOASTS VAST SAND FLATS, OVER 20 BEAUTIFUL ISLANDS, ISLETS AND CAYS OF DIFFERENT SHAPES AND SIZES AND A WONDERFUL LAGOON. A TRULY REMOTE AND PRIVATE RETREAT.









## Cosmoledo Eco Camp

The remote location makes Cosmoledo a place of wild, natural splendour. The environment includes sand dunes, expansive flats, mangroves, grassland and a dramatically fluctuating lagoon. This unique combination creates a hotspot of biodiversity. The Atoll, with its scattered islands, is home to the greatest seabird colony in the Seychelles and boasts significant numbers of masked and red-footed booby. This magnificent ecosystem holds the nation's largest colony of sooty terns (at over 1.2 million pairs) and is the Seychelles' last regular breeding ground of the brown booby. The lagoon and its sandy beaches are favoured by large populations of hawksbill and green turtles for nesting. Cosmoledo is known to have the biggest population of giant trevally in the Seychelles.

With its commitment to the conservation, preservation and protection of the natural resources, this is where nature meets creative hospitality and understated luxury. The distinctive camp has a sense of serenity and adventure from its surroundings, whilst conveying a unity with its location.

The eight recreated air-conditioned Eco Pods blend in with the natural wilderness of the rugged landscape. Equipped with modern amenities, the Eco Pods are decorated in soft, neutral colours which accentuate the natural tones of the island.







## Astove Atoll

Situated 1055 km (665 nautical miles) south-west of Mahé, Astove Atoll spans just six kilometres from north to south. A dramatic landscape with limestone rock and sand dunes which rise against the horizon, Astove is nothing short of spectacular.

Astove Atoll has a rich but desolate history and has been the cause of countless shipwrecks dating back to 1500AC. Legend has it that ships used to pass by in the hope of rescuing and enslaving abandoned souls. Astove gained notoriety when the famed marine biologist Jacques Cousteau filmed the acclaimed underwater documentary, 'The Silent World' along the edge of 'The Wall' on the atoll in 1956. 'The Wall' on Astove is breathtakingly beautiful and is often described as looking down into the Grand Canyon. 'The Wall' is known as one of the best dive sights on the planet.

In 1968 Astove was occupied by the Veevers-Carter family who established a coconut plantation. They constructed a number of buildings including a large main house, chapel, store and accommodation for the workers. The small settlement they created, forms the basis of the accommodation used today.



ASTOVE'S LARGE LAGOON AND WHITE SANDY BEACHES ARE HOME TO A VAST ARRAY OF BIRD AND FISH SPECIES. THE IMPOSING 'WALL' BOASTS IMPRESSIVE SHEER DROP-OFFS WHICH MAKES YOU FEEL LIKE YOU'RE STARING DOWN THE GRAND CANYON. A NATURE LOVERS PARADISE!





The precipitous drop-off runs along the west coast for seven kilometres. The shallow lagoon has one small entrance and due to its elevation, a phenomenon occurs whereby the tide falls like a river for ten hours of the 12-hour tidal cycle and then turns to flood the entire lagoon in only two hours. The undisturbed landscapes have seen the return of various bird species like crab plover and caspian tern along with other migratory waders. Astove is home to a healthy population of giant Aldabra tortoises and is also famous for the extensive number of butterflies that flutter around the atoll.

The surrounding waters and the colourful coral reefs play host to a variety of impressive marine life. This, combined with the sheer drop-offs of 'The Wall' and drastic fluctuations of the inner lagoon, create nutrient-rich currents which bring an astonishing variety of fish species. The inside of the lagoon is a refuge for juvenile species like bonefish and milkfish, which attract the ever ferocious giant trevally that are abundant in the waters surrounding Astove.







## Astove Coral House

Surrounding a central courtyard, the Coral House has six charming and comfortable rooms. With en-suite bathrooms, the recently refurbished rooms offer relaxed accommodation in one of the most remote locations in the world. The key to the experience is how very little has been changed in the Coral House allowing guests a sense of how the Veevers-Carter family would have enjoyed the house.

Guests will enjoy the attentive service as well as superb dining. The menu frequently comprises of a full English breakfast, a buffet lunch or packed picnic lunch to enjoy on location, and a buffet dinner served in the indoor or outdoor dining area. The food is inspired by the traditional Seychellois Creole cuisine with freshly caught fish being the key ingredient.

Evening sundowners are enjoyed most evenings at a beautiful spot on the beach, allowing everyone to gather and discuss the events of the day.

With picture-perfect beaches, edged by palm trees and with not another soul in sight, Astove Atoll is wonderfully unique.

Astove forms part of the Aldabra Group of Atolls and is one of the most remote inhabited islands in Seychelles.







## Amirante Islands

The Amirantes Archipelago lies south-west of the extensive, shallow-water Seychelles Bank in the western Indian Ocean and consists of a group of coral atolls and islands extending over a distance of approximately 152 km. The majority of the islands are sea-level coral reef platforms, all with varying degrees of subaerial sand cay and coral development.

The Amirante Bank is an elongated configuration and its depth makes the snorkelling and diving around the pirouetting coral heads and walls of the Amirantes nothing short of remarkable. Poivre, St. Josephs, Desroches, Boudeuse, Sand Cay, African Banks and Rémire Atolls are blessed with a wide array of thriving marine life.

Kayaking along the edge of the islands on a high tide gives guests the opportunity to see a magnificent bounty of turtles, rays, and various other sea creatures, which call the Amirantes their home.



POIVRE ATOLL CONSISTS OF TWO ISLANDS, AND ITS PROXIMITY TO THE AMIRANTES TRENCH ATTRACTS VARIOUS SPECIES OF PELAGIC ANIMALS. THIS IS ONE OF THE CROWN JEWELS OF THE SEYCHELLES!



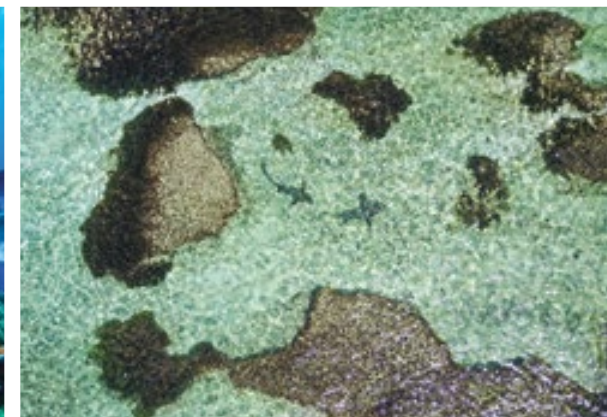


## Poivre Atoll

Poivre Atoll is situated on the eastern edge of the Amirante Bank, a short 300 km (166 nautical miles) from the main island of Mahé. Made up of two islands, namely Poivre and Île du Sud, the atoll forms part of the outer islands of the Seychelles.

Poivre Atoll remained undiscovered until the 1770's. In recent years, Poivre's Terra has become a popular feeding ground for bird species such as white-tailed tropic bird, brown and lesser noddy, fairy and greater terns, crab plover, whimbrels, frigate birds and turnstones. Poivre's red mangroves are home to hundreds of juvenile fish species, Seychelles mud-skipper, elusive moray eels, mangrove crab, young sharks and rays. The sandy shores are also nesting grounds for hawksbill and green turtles. Gentle manta rays and acrobatic spinner dolphins will become your unforgettable dive buddies.

The Amirantes Islands offer spectacular snorkelling, diving and fishing. The Amirante Trench, which steadily steps down to 1200 meters only a few kilometres from the shoreline, is synonymous for its excellent diving and fishing.







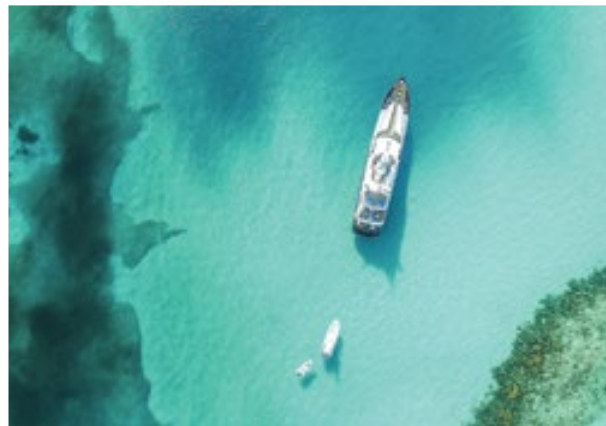
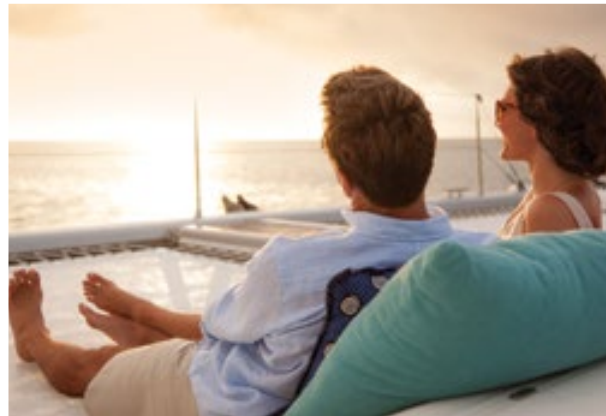
## Personalised Paradise

BESPOKE LUXURY HOLIDAYS  
DESIGNED JUST FOR YOU...

Our passion for the outer atolls and islands is what drives us. Blue Safari Seychelles will offer discerning travellers a unique island and atoll experience, by providing handcrafted luxury travel in one of the most remote regions of the world.

Our accomplished team of 125 professionals, with unmatched expertise, will weave together everything you have dreamed of, for your ultimate island getaway... Exclusive islands with access to superyachts, private planes, helicopters and VIP transfers, along with personal scuba diving instructors, guides and chefs, a specialist travel concierge and rigorous attention to detail – Blue Safari Seychelles, makes the impossible possible.









“OUR PHILOSOPHY IS TO CONSERVE THE NATURAL BEAUTY & BIODIVERSITY OF THE AREA THROUGH PROVIDING THE ULTIMATE OCEANIC AND LAND-BASED EXPERIENCES.”

## Conserve & Protect

“ONLY THROUGH EXPLORING AND UNDERSTANDING THE OUTER ISLANDS ARE WE ABLE TO CONSERVE AND PROTECT THEM.”

The Island Conservation Society (ICS) promotes the conservation and restoration of the ecosystems of the islands and atolls. ICS monitors the ecosystems of the outer islands, including sea turtles, seabirds, coral reefs and fish populations; as well as helping to protect the island flora and fauna through beach clean-ups and reporting on sustainable conservation issues.

Conserving the breathtaking natural beauty of the remote outer islands and atolls lies at the heart of Blue Safari's ethos. As stewards of this area, we work together with various partners and stakeholders to continuously pioneer conservation in this region.





# Making a Difference

Blue Safari Seychelles provides support to ICS through its membership of the Alphonse Foundation as well as the Cosmoledo Astove Foundation. Guests contribute essential funding to the activities of the society through the payment of a conservation donation and are invited to participate in projects such as planting indigenous trees, adopting a tortoise, beach clean-ups as well as the monitoring and data recording of turtles, tortoises, manta rays and birds around the islands and atolls.

Various on-going, long-term projects, aimed at providing lasting solutions include the use of solar power as a renewable energy source, native vegetation restoration, Aldabra giant tortoise monitoring, satellite tracking, monitoring and researching the endangered hawksbill and green turtles, manta rays, marine mammals, sea birds and waders, fish and coral reefs. We have taken part in the Global FinPrint Project and baited 100 remote underwater videos to capture the presence and movement of marine life in the area.

