

FAMILY

safari



CHELI & PEACOCK SAFARIS
Spot the difference!

10-DAY FLYING SAFARI

FOR TRAVEL IN 2021

DIGITAL ITINERARY

DESTINATIONS

El Karama Ranch, Laikipia

El Karama Lodge

Enonkishu Conservancy, Masai Mara

House in the Wild

Diani Beach, Kenyan Coast

Alfajiri Villas

AIMED AT

Families and Couples

Photographers

Adventurers

Birders and Naturalists

Outdoor Enthusiasts

ADDITIONAL EXPERIENCES

Cultural Community Visits

Hot Air Balloon Safari

Rhino Sanctuary Visit

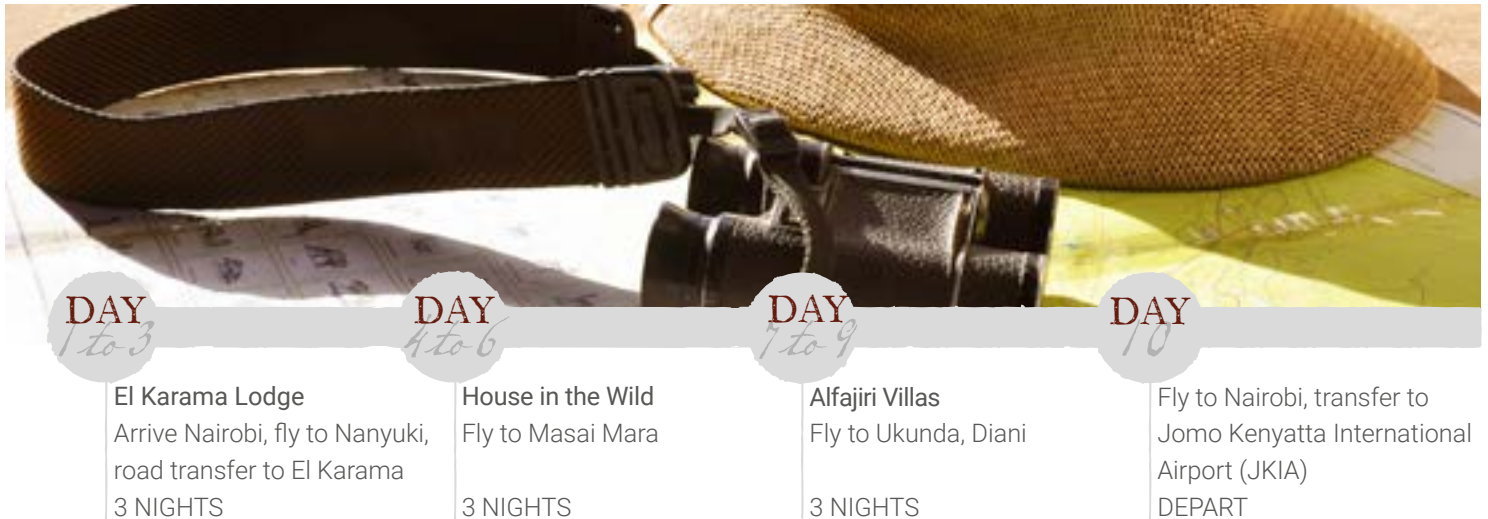
Mara Elephant Project Visit

Dhow Cruise and Kite Surfing

Deep Sea Diving and/or Fishing

safari SUMMARY

- Experience three owner run properties, while covering three very different ecosystems and encountering their tribal inhabitants, whose authentic, traditional and colourful tribal ways remain relatively untouched.
- On El Karama Ranch, explore 14,000 acres of private wilderness, frequented by abundant wildlife.
- The El Karama's Kids Bush School provides tailor made, educational safari activities for all children throughout their stay.
- Enjoy the exclusivity of Enonkishu Conservancy, whose commitment to sustainable rangeland management is encouraging more modern and more viable livestock enterprises that support local communities.
- Considered the best beach in Kenya, Diani offers all of the activities of a beach visit in the seclusion of a lavish, opulent private villa.



2021 Rates

MID-SEASON

07 Jan to 30 April,
01 to 31 Oct,
01 to 15 Dec

GREEN SEASON

01 May to 30 June,
01 to 30 Nov

HIGH SEASON

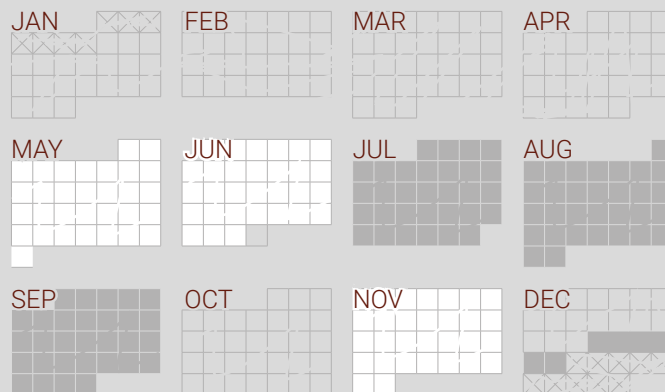
01 Jul to 30 Sep,
16 to 21 Dec

Per person sharing	\$7,841	\$7,231	\$8,196
Single room supplement	\$923	\$923	\$1,394
Child under 12 sharing	\$3,734	\$3,534	\$3,914

INCLUDED IN THE SAFARI

- Full board accommodation at El Karama, House In The Wild Cottages and Alfajiri Garden Villa
- Exclusive use of Alfajiri Garden Villa
- Soft drinks, beer, house wines and selected spirits
- Park and conservancy fees
- Safari activities including shared day game drives, bush breakfasts, sundowners and guided bush walks
- Adventure fly camping, boma/ranch visits and children's bush school at El Karama Lodge
- Bicycle rides in Naretoi at House In The Wild
- Coral reef and snorkelling excursions, one daily massage per adult/teenager, use of gym at nearby property at Alfajiri Garden Villa
- Meet and assist at JKIA, airport/airstrip transfers
- AMREF Flying Doctors Membership
- Laundry and all statutory taxes

□ Mid-season ■ Green Season ■ High Season



EXCLUDED FROM THE SAFARI

- Champagne, luxury spirits and select wines
- Additional activities not mentioned in inclusions
- All statutory increases beyond our control
- International flights and visa fees
- Gratuities

EL KARAMA LODGE



This award winning eco-lodge on 14,000 acres of private wilderness was designed, built and is operated by owners Murray and Sophie Grant.

The lodge's safari cottages and river side tents are dotted on the banks of the Ewaso Nyiro River; frequented by an abundance of wildlife, including four of the Big 5. With a passion for connecting all guests' to the marvel of the natural world, the El Karama team value the importance of contributing to the long term sustainability of Laikipia. Interactive conservation projects for guests to involve themselves in are numerous, from monitoring lions to the reforestation of indigenous forests. Designed as a 'home-away-from-home' the passion for family, sustainability and home grown produce is prominent throughout El Karama; from farm to fork meals enjoyed by the eco swimming pool to tailor made Kids Bush School activities and adventure fly camping, El Karama is an ideal family safari destination.



MAKING A *difference*

- Eco Warrior Award Winner
- Best Ecological Responsible Property in Kenya Winner
- Silver Eco-Rating
- 100% solar system
- 100% water harvesting
- Eco-swimming pool
- On-site vegetable garden
- Grevy zebra census
- Lion census
- Leopard monitoring
- Plant exclusion zone



HOUSE IN THE WILD



House in the Wild is a private family-owned and operated boutique lodge perched on the banks of the Mara River on the Enonkishu Conservancy.

On what was once an intensive commercial farm on the northern edge of the Mara ecosystem, the rewilding project was the first of its kind where the land use on the edge of the Mara has reverted back to nature. Over the last ten years, the project has seen the range lands return to their natural state, with common sightings now of wild dog, leopard and of course the resident pride of lion on the base of the Kileleoni Hill.

House in the Wild is hosted by the Wood family and their dedicated team of staff who are all from the local community. The mess area and four cottages offer the warmth and rustic charm of a family lodge, with all the home comforts you could ask for.



MAKING A *difference*

- Solar electricity system
- Eco wetlands
- Water recycling
- On-site vegetable garden
- Sustainably sourced firewood
- Fellow member of The Long Run
- Indigenous tree nursery
- School support
- Lodge built with sustainable materials
- Bio-monitoring programme

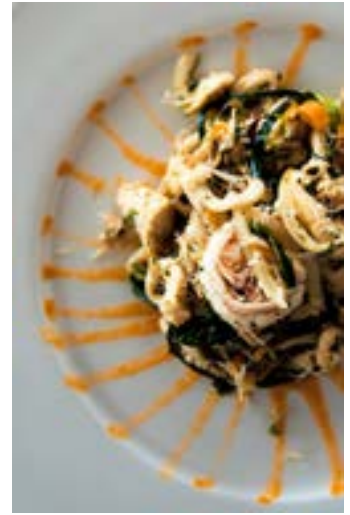


ALFAJIRI VILLAS



Alfajiri Villas provide privacy, exclusivity and luxury on Kenya's famous Diani beach. Owner run and hosted, each opulent private villa has its own private swimming pool and access to the beach and warm water of the Indian Ocean. With delicious cuisine, the menus have a Mediterranean influence, with fresh produce sourced from local farms and of course the sea. Internationally recognised service is 24/7 and provided by a designated butler.

Enjoy the magnificent views and swim in the pool of your private villa, walk on the ten kilometre-long white sandy beach, relax and enjoy a massage, go snorkelling on the edge of the coral reef, play golf at the 18-hole course nearby, visit the Shimba Hills National Reserve or explore the local craft markets. Guests can do as little or as much as they like, hosts Marica and Fabrizio plan individual daily itineraries for their guests.



MAKING A *difference*

- Winner of 'Best Safari Cuisine' and 'Best Marine Safari Experience' in the Safari Awards
- Winner of Africa's Leading Luxury Hotel Villa in the World Travel Awards



THE END

The end of the *Cheli & Peacock Family Safari*.

Other plans can be made to go to another East African destination, or depart for home.



NOTES

- There is a baggage restriction of 15 kgs on all internal flights.
- Rates for singles and larger families available upon request.
- Minimum seven nights stay at Alfajiri Villas over the Festive Season (22 Dec to 05 Jan), with a minimum of four adults per villa.
- This itinerary includes Alfajiri Garden Villa and El Karama Main Lodge; rates for El Karama River Cottages and alternative Alfajiri Villas are available upon request.
- Rates for the Festive Season (22 Dec to 07 Jan 2022) available upon request.
- To tailor the safari, contact Cheli & Peacock Safaris.



For 35 years, Cheli & Peacock Safaris, has operated East African safaris tailored to **every traveller's needs**. In some cases, our adventurer's want some guidance, so each year we create a small group of signature itineraries to inspire wanderlust. These itineraries are more of a suggestion than a template and can be developed further by our Safari Planners, who are passionate safari experts and can advise explorers on the perfect itinerary according to their interests, group, budget and travel dates.

At the forefront of everything we do is an understanding of sustainable travel, and therefore, we partner with organisations that share our approach to preserve Africa's unique and exceptional biodiversity. We know that our travellers are now far more inclined to stay at small boutique lodges and camps that are giving back to the local community and have a minimal effect on the surrounding environment. We appreciate that while vistas and wildlife are at the forefront of every safari experience, so is the modern visitor's desire to engage, at a deeper level, with the destination and its peoples. We do as much as we can to ensure that each of our guests has nothing but a positive effect on the places they visit, supporting local education programmes, conservation initiatives and development projects that have a lasting effect on those micro-economies, communities and ecosystems.





CHELI & PEACOCK SAFARIS
Spot the difference!

HEAD OFFICE

Telephone +254 727 835402

Email info@chelipeacock.com

Peponi Plaza, Nairobi, Kenya