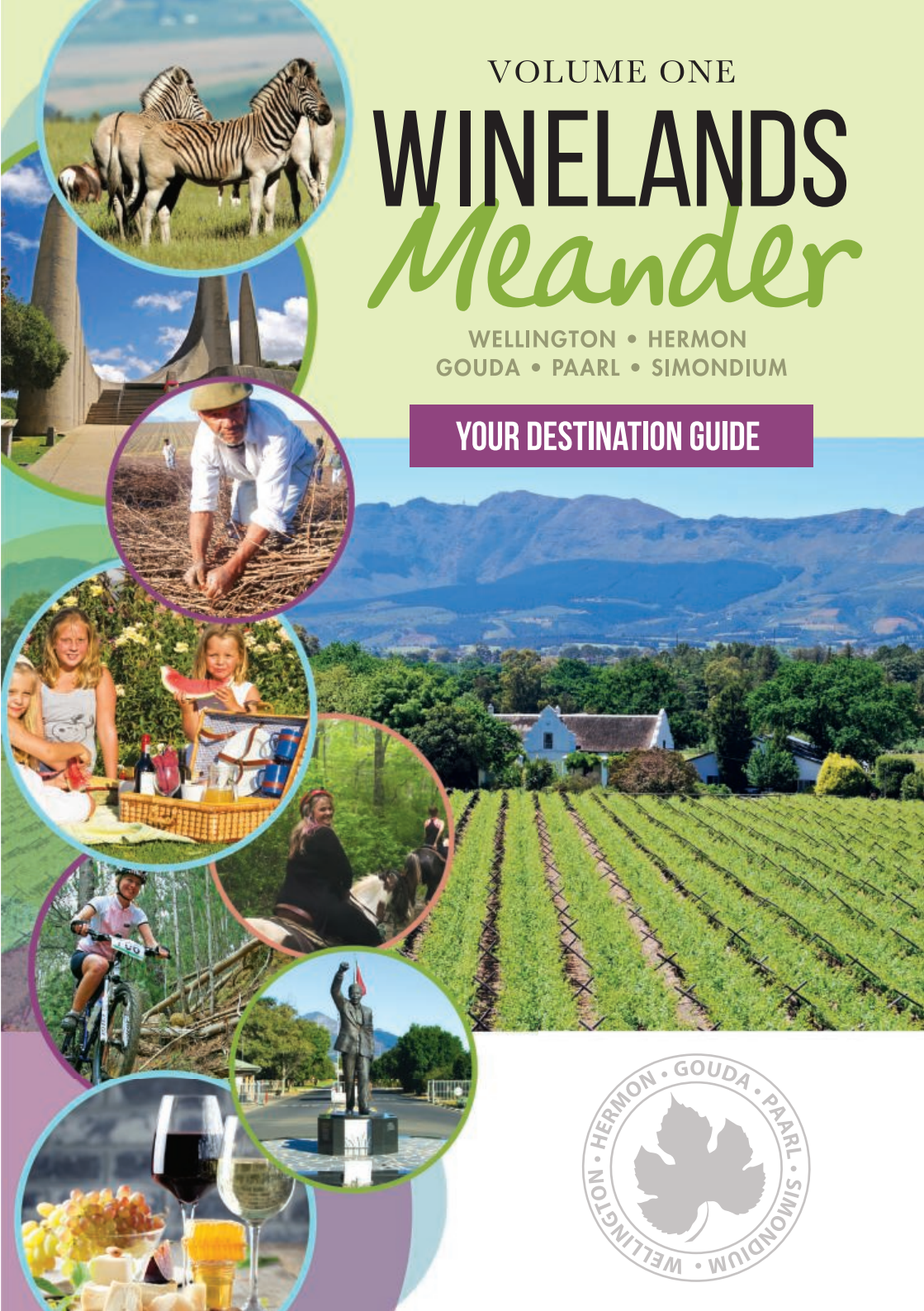


VOLUME ONE

# WINELANDS *Meander*

WELLINGTON • HERMON  
GOUDA • PAARL • SIMONDIUM

YOUR DESTINATION GUIDE



# H°F

HOUSE OF FIRE  
BY KWV

WE INVITE YOU TO JOIN US ON A JOURNEY  
*that will ignite your senses...*



KWV  
**WINE  
EMPORIUM**

KWV BRANDY & CHOCOLATE PAIRING | BRANDY TOUR | BRANDY BLENDING WITH BRANDY MASTER

Kohler Street, Southern Paarl (Behind Paarl Mall)  
p: +27 21 807 3007/8 | e: [houseoffire@kwv.co.za](mailto:houseoffire@kwv.co.za)

[www.kwvwineemporium.co.za](http://www.kwvwineemporium.co.za)



# WE INVITE YOU TO TAKE A TOUR OF THE CAPE WINELANDS



## IN THE HEART OF THE CAPE WINELANDS, YOU WILL DISCOVER THE BEAUTIFUL TOWNS MEANDERING ALONG THE BERG RIVER.

The Drakenstein municipal region stretches from **Simondium to Gouda** and includes the historical towns of **Paarl and Wellington**.

The towns lie along the corridor of **The Berg River**, one of the Cape's main rivers, from **Paarl, Wellington, Hermon, Gouda and Saron**. The Berg River plays a significant role in the agricultural practices of the region with **wine and grape production** the biggest thereof. The Berg River is also a recreational attraction with **The Berg Canoe Marathon** being the most prominent event.

The **picturesque beauty** of both Paarl and Wellington compels visitors to explore the many scenic routes in the valley and surrounding mountains.

Visit the 'pearl' of the Cape Winelands, **Paarl and its Wine Route** – a town that takes its name from the huge granite outcrop that stands proudly on the crest of Paarl Mountain. Paarl was founded in 1687 and is the **third-oldest town** in South Africa. The town is a mere 45-minutes' drive from Cape Town. The **birth of Afrikaans** as the World's youngest language is celebrated by the **Afrikaans Language Monument** that stands aside the southern slopes of Paarl Mountain. Just outside Paarl is the Drakenstein Prison, where **Nelson Mandela** spent his last years in captivity and where he completed his long walk

to freedom. The town has many fine examples of **Georgian, Victorian, Edwardian and Cape Dutch buildings** that compete for space with the wide variety of fine restaurants and coffee shops spread out along the **twelve-kilometre-long Main Street**.

**Wellington was founded in 1840** and was named after the Duke of Wellington. The Wellington region is renowned for its beautiful **Cape Dutch homesteads** and gardens. The historic **Bain's Kloof Pass**, with its unsurpassed vistas, indigenous flora and fauna and crystal-clear rock pools is the perfect spot for hikers, while closer to town **wine-walks and horse-trails** through farmland and fynbos can be enjoyed. The **dried fruit industry** is synonymous with Wellington and the town is surrounded by fruit orchards, wine estates and olive groves.

Situated to the **north of Wellington**, the villages of Saron (originally a mission station), Gouda and Hermon are spread out in the midst of **rich farmlands** in the shadow of the Elands-kloof and Winterhoek Mountains.

Enjoy **true country hospitality, award winning wines and tranquil stay-overs** to suit a variety of amenities and budgets. These towns provide **excellent conferencing venues** and some of the most **idyllic wedding venues** on the Cape Winelands. You can revel in beautiful **fynbos-rich walks and hiking trails**, superb mountain biking trails or take a relaxing drive through the countryside to enjoy the **spectacular scenery** and a leisurely lunch washed down with some of the **region's award winning wines**.

# HOW TO USE THIS GUIDE

The Winelands Meander is divided into two main sections – Paarl & Wellington. Each of these sections are divided further into different routes and sections and colour coded. Member numbers show their place on each route map. You can find each member by making use of their map reference number & listings.



## SCAN THE CODE & FOLLOW

BY SCANNING THE CODE YOU  
WILL VISIT THE DLTA WEBSITE:  
[WWW.WINELANDSMEANDER.ORG.ZA](http://WWW.WINELANDSMEANDER.ORG.ZA)



FREE WIFI



HELIPAD



WIFI



HALAAL



WHEELCHAIR FRIENDLY  
WITH TOILET



NEW MEMBER



CARDS ACCEPTED



OPEN SUNDAYS



COVERED PARKING



SHUTTLE SERVICES

MAP REFERENCE NUMBER **00**

## ADVERT ICONS



WINE CELLAR/SALES



SPA



RESTAURANT



ACCOMMODATION



OUTDOOR  
ADVENTURE



CONFERENCE  
FACILITIES



WHEELCHAIR  
ACCESS



CHILDREN  
FRIENDLY

## \*MAP REFERENCE COLOURS

*\*Also indicated  
on each map*



WINERY



BUSINESS



RESTAURANT



ACCOMMODATION



ATTRACTION



VENUE



## VISIT ONE OF THE DLTA TOURISM OFFICES:

### PAARL TOURISM

ADDRESS: 216 MAIN ROAD, PAARL | TEL: +27 21 872 4842

EMAIL: [PAARLINFO@DLTA.CO.ZA](mailto:PAARLINFO@DLTA.CO.ZA) | WEB: [WWW.PAARLONLINE.COM](http://WWW.PAARLONLINE.COM)



### WELLINGTON TOURISM

ADDRESS: 104 MAIN ROAD, WELLINGTON | TEL: +27 21 864 1378

EMAIL: [WELLINGTONINFO@DLTA.CO.ZA](mailto:WELLINGTONINFO@DLTA.CO.ZA) | WEB: [WWW.WELLINGTON.CO.ZA](http://WWW.WELLINGTON.CO.ZA)







# FIND YOUR WAY.

<b>Arts &amp; Crafts Meander</b>	<b>Page 4</b>
<b>Outdoor &amp; Adventure Meander</b>	<b>Page 8</b>
<b>Sunday &amp; Child Friendly Meander</b>	<b>Page 14</b>
<b>Weddings &amp; Conferences</b>	<b>Page 22</b>
<b>Tour Guides &amp; Operators</b>	<b>Page 28</b>
<b>DISCOVER PAARL: Intro</b>	<b>Page 30</b>
<b>Route 1</b>	<b>Page 34</b>
<b>Route 2</b>	<b>Page 48</b>
<b>Route 3</b>	<b>Page 52</b>
<b>Route 4</b>	<b>Page 58</b>
<b>Route 5</b>	<b>Page 62</b>
<b>Route 6</b>	<b>Page 66</b>
<b>Map &amp; Reference Guide</b>	<b>Page 71</b>
<b>Heritage Route</b>	<b>Page 72</b>
<b>Wine &amp; Dine Route</b>	<b>Page 76</b>
<b>DISCOVER WELLINGTON : Intro</b>	<b>Page 82</b>
<b>Route 1</b>	<b>Page 86</b>
<b>Route 2</b>	<b>Page 92</b>
<b>Route 3</b>	<b>Page 96</b>
<b>Route 4</b>	<b>Page 100</b>
<b>Route 5</b>	<b>Page 104</b>
<b>Map &amp; Reference Guide</b>	<b>Page 107</b>
<b>Heritage Route</b>	<b>Page 108</b>
<b>Wine &amp; Dine Route</b>	<b>Page 112</b>
<b>HERMON</b>	<b>Page 118</b>
<b>SARON</b>	<b>Page 120</b>
<b>GOUDA</b>	<b>Page 122</b>
<b>Affiliated Members</b>	<b>Page 124</b>

# ARTS & CRAFTS MEANDER



## VIEW THE CREATIVITY AND VISION OF ARTISTS OF THE CAPE WINELANDS

The Arts & Crafts Meander is the proverbial heaven for those of us who love to stroll through art galleries, visit shops with 'snuisterye' and hand crafted art pieces.

Situated in the heart of the Winelands, visitors can look forward to a collection of arranged routes that offer visitors **unique arts, crafts and experiential tourism attractions**. An easy 45-minute drive from Cape Town, visitors will experience the **creativity and entrepreneurship** of small towns within the Winelands.

Once you have finished meandering through the galleries, shops and artist studios, you can look forward to some wine experiences, great restaurants and beautiful historical sites.



The meander also does not disappoint those who wish to take home a story of a **unique experience**. The Arts & Craft project started off as a tourism route development project and soon we found that we had so many offerings that a formal route was launched in 2016. This route is far from complete and grows by the day.







GET UP CLOSE AND  
PERSONAL WITH ANY  
OF THESE ARTISTS

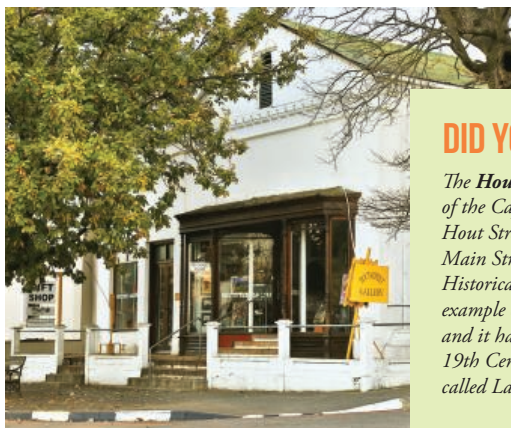
SCAN THESE CODES

To make it easy to find and get to know some of the best artists in South Africa, visit the Paarl website [www.paarlonline.com](http://www.paarlonline.com) or the Wellington website [www.wellington.co.za](http://www.wellington.co.za). Here you will find interesting facts, history and contact details of each of our artists. Please make use of these QR codes to quickly be directed to these websites.

PAARL

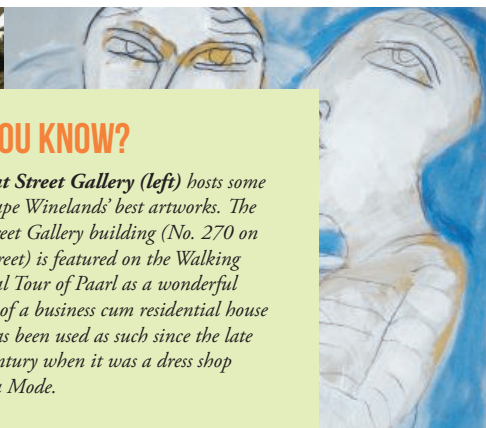


WELLINGTON

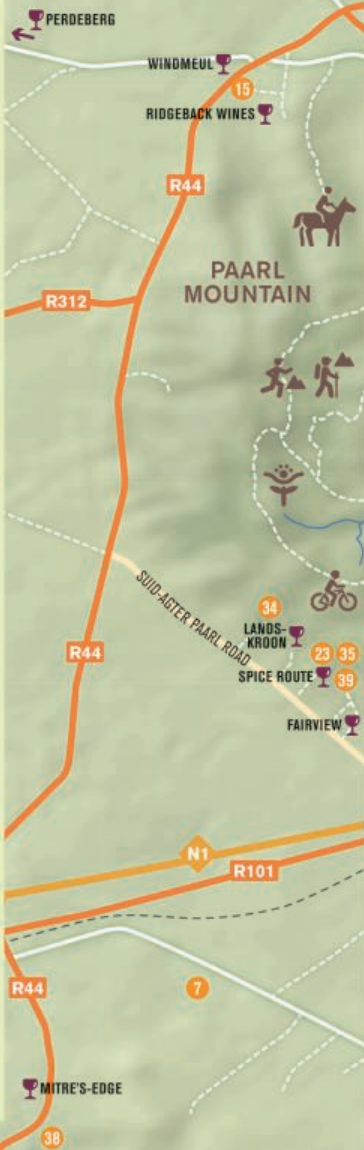
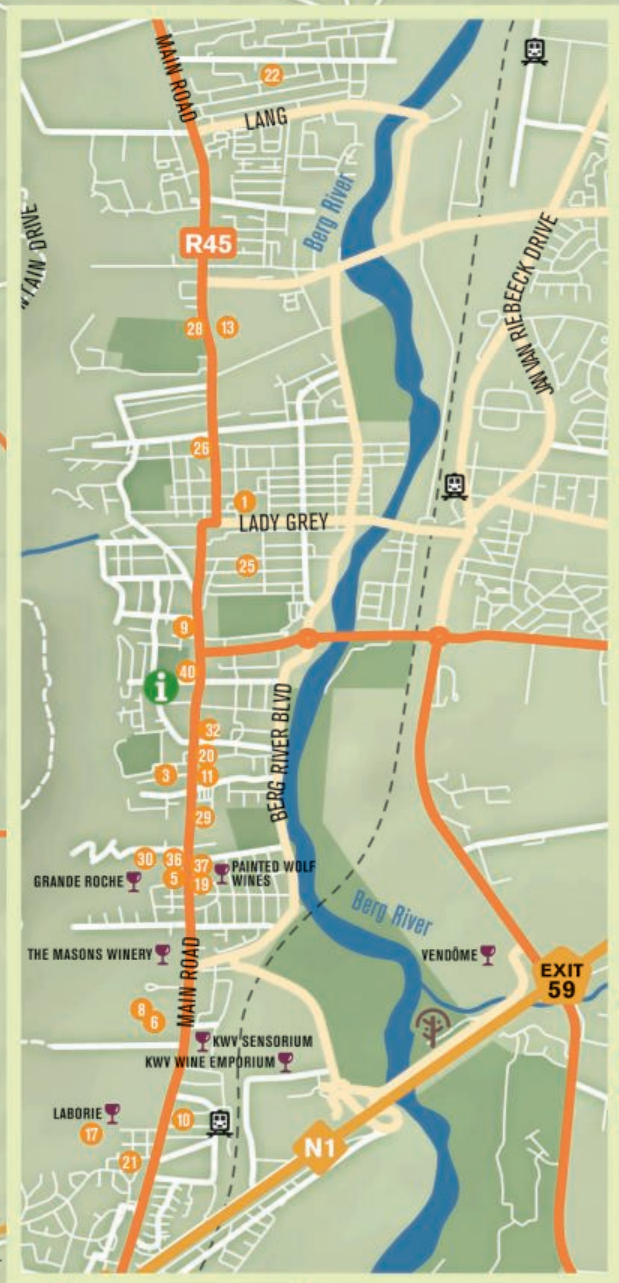


## DID YOU KNOW?

*The Hout Street Gallery (left) hosts some of the Cape Winelands' best artworks. The Hout Street Gallery building (No. 270 on Main Street) is featured on the Walking Historical Tour of Paarl as a wonderful example of a business cum residential house and it has been used as such since the late 19th Century when it was a dress shop called La Mode.*



# PERDEBERG









# OUTDOOR & ADVENTURE MEANDER

TOWERING MOUNTAINS, VINEYARDS, ORCHARDS, RIVERS AND STREAMS  
MAKE THIS PART OF THE WINELANDS AND SURROUNDS THE IDEAL  
DESTINATION FOR THE OUTDOOR ENTHUSIAST.

**Klipkershout Walking Trail** on Paarl Mountain Nature Reserve offers various scenic walking trails ranging between 2.4 and 10 kilometres in length. Set off on a vigorous hike, climb **Bretagne Rock**, follow one of the many hiking trails in the surrounding mountains, or visit **Millwater Wild Flower Garden**. **Paarl Mountain Nature Reserve** is a picturesque landscape of fynbos vegetation, dominated by massive rounded granite rock domes, said to be the 2nd largest in the world, set among wild olives, rock candlewoods and wagon trees and is great for hiking, rock climbing, mountain-biking and picnics.

Challenge yourself to rock climbing or abseiling from **Paarl Rock**. Paarl Mountain Nature Reserve is great for hiking, rock climbing, mountain-biking and picnics. Hiking trails include the eight kilometre **Miaspoort Trail** in the Du Toitskloof Mountains and the three kilometre Donkerkloof trail to the small waterfall starting at the hairpin bend on the old Du Toitskloof Pass. Mountain biking trails are dotted around Paarl including in Paarl Mountain Nature Reserve, **Jan Philips mountain road**, Agter-Paarl road and Rhebokskloof Wine Estate. For a full programme of the many mountain-biking trails, events and races, log on to **www.paarlonline.com**

What better way to enjoy the great outdoors than on horseback! Horse-riding can be

enjoyed on trails or on some wine farms. For the 'sport of kings' enthusiasts, there are regular polo matches at **Val de Vie**.

For the keen golfer, there is **Paarl Golf Club**, the first 27-hole championship golf course in the Western Cape, which is situated on the beautiful **Boschenmeer Golf Estate**. The 18-hole Pearl Valley golf course is located nearby.

The Berg River in Paarl is the starting point for the internationally renowned **Berg River Canoe Marathon**. There are few events that can compare with this strenuous 4-day canoe river marathon that draws competitors and onlookers alike in their thousands, in the water and along the river banks from Paarl to Velddrif on the Atlantic coast. **Berg River Resort** is centrally situated between Paarl, Franschhoek and Stellenbosch and offers a variety of accommodation. Facilities include a 3.5-metre deep Olympic-size swimming pool, a children's pool, waterslide and the river, which is ideal for swimming and canoeing.

Fish for bass at **Nantes dam**, on **Paarl Mountain** - (permits obtainable from Drakenstein Municipality) or in the Berg River – or try your hand at fly fishing at **Elandspad, on Du Toitskloof**. For the fit and energetic, there is a game of squash, hockey and action cricket, that caters for everyone from the rank amateur, to the professional.

**Le Bonheur Crocodile Farm** at Simondium offers the rare opportunity to view these prehistoric creatures up close and has a restaurant and



gift shop, as well as picnic facilities. Le Bonheur Crocodile Farm is home to more than 200 farm-bred Nile crocodiles. Visitors can sample homemade croc pies or browse the curio shop where an extensive selection of crocodile products are available for purchase.

**Paarl Arboretum** nestles on the banks of the Berg River in the centre of Paarl. The Arboretum is 2.8-kilometres long and is divided into six 'continents' of unique trees and shrubs from Europe, Africa, South America, Asia, North America and Australia.

**Limietberg Nature Reserve** is nestled in the Du Toitskloof Mountains and offers superb outdoor activities within a natural, pristine environment. Enjoy a one-day hike, or a multi-day trail or simply take a leisurely drive over the historic Du Toits Kloof Pass linking Paarl and Worcester. The indigenous Cape fynbos attracts many endemic bird species, including the Cape Sugarbird and Orange-breasted Sunbird. The scenic beauty of Wellington and surrounds, lends itself perfectly to a plethora of outdoor activities.

Walking and hiking trails with various levels of difficulty include the 36 kilometre **Doolhof River walk**, **Bain's Kloof**, **TweedeTol**, **Limietberg Trail**, the eight kilometre **Rockhopper Trail**, the nine kilometre **Happy Valley Trail** in the **Limietberg Nature Reserve**, the seven kilometre **Horse Shoe** and the ever popular **Wellington Wine Walks** through vineyards, olive orchards, fields of buchu and vine-cutting plantations, with overnight stays in guest houses on historic Huguenot farms.



Explore the vineyards and indigenous fynbos area on horseback. Fynbos Horse trails, operating from Diemersfontein, offers rides through the wine farms. Short trails as well as one to three day trails are all included in these packages.

Try your hand at fly-fishing in the Witte River on Bain's Kloof and for those who prefer a bat, racquet or club, Wellington boasts a nine-hole golf course, jukskei, cricket, bowls, tennis and squash.

Welvanpas is a popular mountain biking trail. Wildlife experiences are Bontebok Ridge for a game drive, bird watching and sundowners, and Bartholomeus Klip Renosterveld Reserve outside Hermon. This private game reserve protects antelope, other small mammals, and the highly endangered geometric tortoise, in the largest surviving area of natural Renosterveld.

Take a ride on the wild side with Viking Tours. Their powerful Unimog will take you places beyond your imagination while discovering the Hawequa Mountains. Sundowners on top of Groenberg, overlooking the valley with views towards Table Mountain in the distance, together with picnics and swimming in the mountain streams, complete the adventure.

## DID YOU KNOW?

*The **Paarl Rock** is the bulbous granite outcrop that is part of the larger Paarl Mountain, standing out from miles away for its smooth, flawless appearance, from where it gets its name.*



# PAARL OUTDOOR & ADVENTURE VENUES – DIRECTORY

## AFRIKAANS TAALMONUMENT

01

+27 (0)21 863 4809 / 0543  
bemarking@taalmuseum.co.za  
www.taalmuseum.co.za



## ASG EVENTS

02

+27 (0)76 022 5141  
darren@asgevents.co.za  
www.asgevents.co.za

## BABYLONSTOREN GARDEN

03

+27 (0)21 863 3852  
enquiries@babylonstoren.com  
www.babylonstoren.com

## BERG RIVER RESORT

04

+27 (0)21 001 8805  
info@bergriverresort.co.za  
www.bergriverresort.co.za

## BOSCHENMEER GOLF ESTATE

05

+27 (0)21 863 1140  
manager@paarlgc.co.za  
www.boschenmeergolf.co.za

## CASCADE COUNTRY MANOR HIKING & BIKING TRAILS

06

+27 (0)21 868 0227  
welcome@cascademanor.co.za  
www.cascademanor.co.za

## CERES ZIPLINE ADVENTURES

07

+27 (0)78 063 5134/ +27 (0)79 245 0354  
info@ceresadventures.co.za  
www.ceresadventures.co.za

## CHEETAH EXPERIENCE - ASHIA

08

+27 (0)72 956 3282  
enquiries@ashia.co.za  
www.ashia.co.za

## ELEMENT ADVENTURES

09

+27 (0)79 601 8677  
elementadventures@hotmail.com  
www.elementadventures.net

## FRANSCHHOEK WINE TRAM

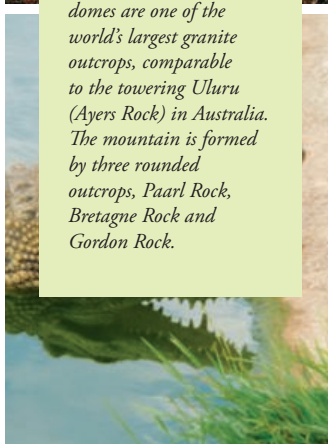
10

+27 (0)21 300 0338  
info@winetram.co.za  
www.winetram.co.za



## DID YOU KNOW?

*Paarl Mountain's 500-million-year-old domes are one of the world's largest granite outcrops, comparable to the towering Uluru (Ayers Rock) in Australia. The mountain is formed by three rounded outcrops, Paarl Rock, Bretagne Rock and Gordon Rock.*



## HIKING TRAILS LIMIETBERGE (DU TOITSKLOOF & BAIN'S KLOOF)

12

+27 (0)21 482 0190  
reservations.alert@capenature.co.za  
www.capenature.co.za

## LE BONHEUR CROCODILE FARM

13

+27 (0)21 863 1142  
info@lebonheurcrocfarm.co.za  
www.lebonheurcrocfarm.co.za

## ONSITE EVENTS

14

+27 (0)82 787 2472  
lans@onsite-events.co.za  
www.entries.onsite-events.co.za

## PAARL MOUNTAIN NATURE RESERVE

15

+27 (0)82 744 5900  
Louiser@drakenstein.gov.za  
www.drakenstein.gov.za

## PEARL VALLEY GOLF ESTATE

16

+27 (0)21 867 8000  
golf@pearlvalley.co.za  
www.pearlvalley.co.za

## RHEBOKSKLOOF WINE FARM HIKING & BIKING TRAILS

17

+27 (0)21 869 8386  
info@rhebokskloof.co.za  
www.rhebokskloof.co.za

## THE ALPACA LOOM

18

+27 (0)84 793 3666  
info@alpacos.co.za  
www.alpacos.co.za

## VLIEDAG FREEDOM CO.

19

+27 (0)62 046 8532  
egan@vliedag.com  
www.vliedag.com





# WELLINGTON OUTDOOR & ADVENTURE VENUES – DIRECTORY

## BARTHOLOMEUS KLIP FARMHOUSE NATURE DRIVE

21

+27 (0)22 448 1087/ +27 (0)82 829 4131  
info@bartholomeusklip.com  
www.bartholomeusklip.com



## BARTHOLOMEUS KLIP FARMHOUSE MTB TRAIL, HIKING TRAIL AND FISHING

21

+27 (0)22 448 1087/ +27 (0)82 829 4131  
info@bartholomeusklip.com  
www.bartholomeusklip.com

## BONTEBOK RIDGE RESERVE SAFARI DRIVE

22

+27 (0)82 690 9075  
katja@turnerco.co.za  
www.bontebokridge.com

## DIEMERSFONTEIN WINE ESTATE HORSE RIDING

23

+27 (0)82 335 8132  
steytlers@mweb.co.za  
www.fynbostrail.com

## DUNSTONE WINES MOUNTAIN BIKE TRAIL

24

+27 (0)21 864 1504  
stay@dunstone.co.za  
www.dunstone.co.za



## LIMIETBERG NATURE RESERVE HIKING TRAILS & RECREATIONAL FISHING

25

+27 (0)21 482 0190  
reservations.alert@capenature.co.za  
www.capenature.co.za



## DID YOU KNOW?

*Limietberg Nature Reserve has nine different hiking trails through indigenous fynbos terrain and there are also a number of scenic drives in and around Wellington.*

*Many historical sights, as well as ancient Sand Rock Art, the final resting place of the Bain's Pass builders and disused manganese mines can be experienced on these routes.*



## PONY JOY RIDES

26

+27 (0)79 6509648  
ponyjoyrides@gmail.com



## UPLAND ORGANIC FARM HIKING TRAIL

28

+27 (0)21 864 1184/ +27 (0)82 737 9990  
elsieoettle@gmail.com  
www.organicwine.co.za

## WELLINGTON GOLF CLUB

29

+27 (0)21 873 4762  
info@wellgolf.co.za  
www.wellgolf.co.za

## WELLINGTON WINE WALK

30

+27 (0)82 335 8132/ +27 (0)83 235 5570  
info@winewalk.co.za  
www.winewalk.co.za

## QUENTI ALPACA & MILL

27

+27 (0)21 873 6242  
linda@quenti.co.za  
www.quentialpacas.co.za

## WELVANPAS

MTB TRAILS AND HIKING TRAIL

31

+27 (0)21 864 1239  
welvanpas@gmail.com  
www.welvanpas.co.za

PERDEBERG

PERDEBERG

WINDMEUL

RIDGEBACK WINES

R44

R312

PAARL MOUNTAIN

R44

SUD-AGTER PAARL ROAD

18

LANDS-KROON

SPICE ROUTE

FAIRVIEW

EXIT 47

N1

R101

EXIT 39

R304

R44

MITRE'S-EDGE

3







# SUNDAY & CHILD FRIENDLY MEANDER

## OUTDOOR EXCURSIONS & ACTIVITIES

Paarl is home to two of the best known golf courses in the Cape Winelands, Boschenmeer and Pearl Valley.

Wellington is home to the first 9-hole golf course in South Africa and today players can enjoy an 18-hole game. For the adrenalin seekers there are a number of hiking trails, MTB trails, abseiling, horse riding or quad bike rides to name but a few.

What better way to spend a laid-back Sunday with family and friends than in the winelands with beautiful mountain views, vineyards and clean air? Build up an appetite while exploring the historical beauty, enjoy a round of golf or just stroll along hiking trails. After lunch you can take a scenic drive to feed your soul.



## LEGENDARY HISTORICAL TRAILS

The best way to **explore a town is by foot** so that you can take in the sight, sounds and architectural beauty of the Cape Wineland towns.

The **Wellington Historical Trail** starts off at the Dutch Reformed Church that was established in 1840 simultaneously with the proclamation of Wellington as a town on 26 March 1840. The route passes approximately 38 historical sites, some along Church Street and other just off Church Street.

The **Paarl Historical Trail** runs along the 12,5 km main road in Paarl. This Historical Route is one of the best preserved historic streets in the country with many original buildings, representing the most popular architectural styles of the last 250 years, still intact and beautifully preserved. A detailed map of the Historical Trail is available at the Paarl Info Office which is open on Sundays from 10:00-13:00.

## DID YOU KNOW?

*Paarl is one of only a few places in South Africa where a river runs through the town, in this case, the mighty Berg River. The annual **Berg River Canoe Marathon** draws competitors from around the world.*



## WINE FARMS TO VISIT IN THE AREA

Paarl has the second oldest wine route in South Africa and is proud to be home to the first **commercial cellar of South Africa – KWV**. The winemakers of this region pride themselves on innovative wines. Visitors can enjoy wine tasting, cellar tours and food & wine pairings at selected wineries.

Wellington has a number of small farms along the **Berg and Spruit Rivers** at the foot of the Groenberg and Limietberg mountains. Enjoy the day with family in this authentic little town.



### DID YOU KNOW?

*KWV is one of the largest wine cellars in the world under one roof. Established in 1918, the year Nelson Mandela was born, South African wine farmers founded KWV with the aim of stabilizing, supporting and structuring a struggling young industry.*



## SCENIC DRIVES

**Paarl** – Take a drive through the Paarl Mountain Nature Reserve or stop at the allocated parking areas and explore the Cape Fynbos and Renosterveld on foot. Bring your own picnic and enjoy a relaxing day at any of the dedicated camps in the reserve.

Enjoy a leisurely Sunday drive along the historic Bain's Kloof Pass that is also known as the 'Gateway to the North'. Bain's Kloof Pass, with its unsurpassed vistas, indigenous flora and fauna, crystal-clear rock pools and campsites.



## RESTAURANTS TO VISIT

Where there is **good wine** one can expect to enjoy it with **good food**. The culinary fest ranges from traditional South African cuisine, Indian cuisine that is Halaal certified, to French and Italian. The **restaurant offerings** are as **diverse** as the wineries you will come across.



# PAARL SUNDAY & CHILD FRIENDLY LOCATIONS – DIRECTORY

## DID YOU KNOW?

Paarl is the **third oldest town** and European settlement in South Africa. The Paarl valley was colonized in 1687 when land was allocated to 23 families from neighbouring Stellenbosch.



## WINE ESTATES

### FAIRVIEW

01

+27 (0)21 863 2450  
neil@fairview.co.za  
www.fairview.co.za

### KWV WINE EMPORIUM

02

+27 (0)21 807 3007 / 3008  
wineemporium@kwv.co.za  
www.kwv.co.za

### MELLASAT VINEYARDS

03

+27 (0)21 862 4525  
tastingroom@mellasat.com  
www.mellasat.com

### NEDERBURG WINES

04

+27 (0)21 862 3104  
nedwines@distell.co.za  
www.nederburg.com

### PEARL MOUNTAIN WINES

05

+27 (0)21 872 9507  
sales@pearlmountain.co.za  
www.pearlmountain.co.za

### RHEBOKSKLOOF WINE ESTATE

06

+27 (0)21 869 8386  
info@rhebokskloof.co.za  
www.rhebokskloof.co.za

### RIDGEBACK WINE FARM

07

+27 (0)21 863 8068  
tasting@ridgeback.co.za  
www.ridgebackwines.co.za

### UNDER OAKS WINE

08

+27 (0)21 869 8535  
wine@underoaks.co.za  
www.underoaks.co.za

## ATTRACTIONS

### AFRIKAANS TAALMONUMENT AFRIKAANS LANGUAGE MONUMENT

09

+27 (0)21 863 4809 / 0543  
bemarking@taalmuseum.co.za  
www.taalmuseum.co.za

### ANGLO BOER WAR MEMORIAL HERITAGE WALKS

10

Contact Laborie Wine Farm  
+27 (0)21 863 3366

### BABYLONSTOREN GARDEN

11

+27 (0)21 863 3852  
enquiries@babylonstoren.com  
www.babylonstoren.com

### BOSCHENMEER GOLF ESTATE

12

+27 (0)21 863 1140  
manager@paarl.gc.co.za  
www.boschenmeergolf.co.za

### DE VILLIERS CHOCOLATE CHOCOLATE TASTING

13

+27 (0)21 874 1060  
cornell@dvchocolate.com  
www.dvchocolate.com

### ELEMENT ADVENTURES PAINTBALLING & QUAD BIKING

14

+27(0)79 601 8677  
elementadventures@hotmail.com  
www.elementadventures.net

### FRATER SQUARE UNIQUE SHOPPING EXPERIENCE

15

+27 (0)82 899 5318  
frater@iafrica.com  
www.fratersquare.com

### GARDEN SPA AT BABYLONSTOREN

16

+27 (0)21 863 3852  
reservations@babylonstoren.com  
www.babylonstoren.com

### HERO ADVENTURE TRAILS HIKING & BIKING TRAILS

17

+27 (0)83 384 2976  
herotrails@gmail.com  
www.hero-adventure.co.za

### LE BONHEUR CROCODILE FARM CROC CAGE DIVING

18

+27 (0)21 863 1142  
info@lebonheurcrocfarm.co.za  
www.lebonheurcrocfarm.co.za

### PAARL MALL SHOPPING

19

+27 (0)21 863 5360  
info@paarlmall.co.za  
www.paarlmall.co.za

### PAARL MOUNTAIN NATURE RESERVE NATURE WALKS & DRIVES

20

+27 (0)82 744 5900  
Louiser@drakenstein.gov.za  
www.drakenstein.gov.za

### PEARL VALLEY GOLF ESTATE

21

+27 (0)21 867 8000  
golf@pearlvalley.co.za  
www.pearlvalley.co.za

### RHEBOKSKLOOF WINE ESTATE MTB & HIKING

22

+27 (0)21 869 8386  
info@rhebokskloof.co.za  
www.rhebokskloof.co.za



# PAARL SUNDAY & CHILD FRIENDLY LOCATIONS – DIRECTORY

## SPICE ROUTE DESTINATION 23

+27 (0)21 863 5200  
info@spiceroute.co.za  
www.spiceroute.co.za

## EAT @ SIMONSVLEI 32

+27 (0)21 863 3845  
eatat@mweb.co.za  
www.eatatsimonsvlei.co.za

## THE ALPACA LOOM COFFEE SHOP 42

+27 (0)84 793 3666  
info@alpacas.co.za  
www.alpacas.co.za

## THE ALPACA LOOM WEAVING STUDIO 24

+27 (0)84 793 3666  
info@alpacas.co.za  
www.alpacas.co.za

## KIKKA LABORIE SENTRUM 33

+27 (0)21 863 1184  
karike@kikka.co.za  
www.kikka.co.za

## THE DECK RESTAURANT AT RIDGEBACK 43

+27 (0)21 869 8068  
tasting@ridgeback.co.za  
www.ridgebackwines.co.za

## RESTAURANTS

## LA GRAPPERIA PIZZA & BISTRO AT SPICE ROUTE 34

+27 (0)21 863 4367  
tenielle@wilderer.co.za  
www.wilderer.co.za

## THE GOATSHED AT FAIRVIEW 44

+27 (0)21 863 3609  
goatshed@fairview.co.za  
www.goatshed.co.za

## BARLEY & BILTONG AT SPICE ROUTE 25

+27 (0)21 863 5200  
info@barleyandbiltong.co.za  
www.spiceroute.co.za

## MELISSA'S AT FRATER SQUARE 35

+27 (0)21 863 0740  
fratersquare@melissas.co.za  
www.fratersquare.com

## THE HUSSAR GRILL PAARL 45

+27 (0)21 863 0466  
paarl@hussargrill.com  
www.hussargrill.co.za

## BABEL RESTAURANT AT BABYLONSTOREN 26

+27 (0)21 863 3852  
reservations@babylonstoren.com  
www.babylonstoren.com

## MOKSH AUTHENTIC INDIAN CUISINE 36

+27 (0)21 872 4548  
sunil@mokshrestaurant.co.za  
www.mokshrestaurant.co.za

## THE RED TABLE AT NEDERBURG 46

+27 (0)21 877 5155  
theredtable@nederburg.co.za  
www.nederburg.com

## BAKERY AT BABYLONSTOREN 27

+27 (0)21 863 3852  
reservations@babylonstoren.com  
www.babylonstoren.com

## PAARL DE VILLE RESTAURANT 37

+27 (0)21 976 4409  
ilana@paarldeville.co.za  
www.paarldeville.co.za

## THE RESTAURANT ON LE BONHEUR 47

+27 (0)21 863 1142  
info@lebonheurcrocfarm.co.za  
www.lebonheurcrocfarm.co.za

## BERTUS BASSON AT SPICE ROUTE 28

+27 (0)21 863 5222  
reservations@bertusbasson.com  
www.bertusbasson.com

## POLO CLUB AT VAL DE VIE 38

+27 (0)21 863 6174  
poloclub@dishfood.co.za  
www.valdevie.co.za

## THE RHEBOKSKLOOF RESTAURANT 48

+27 (0)21 869 8386  
restaurant@rhebokskloof.co.za  
www.rhebokskloof.co.za

## BLACKSMITH'S KITCHEN 29

+27 (0)21 870 1550  
thebistro@pearlmountain.co.za  
www.pearlmountain.co.za

## PRIMI PIATTI 39

+27 (0)21 863 3500  
paarl@primi-piatti.com  
www.primi-world.co.za

## THE RESTAURANT AT PEARL VALLEY 49

+27 (0)21 867 8000  
pearlvalley@dishfood.co.za  
www.pearlvalley.co.za

## BOSMAN'S AT GRANDE ROCHE HOTEL 30

+27 (0)21 863 5100  
restaurantbookings@granderoche.co.za  
www.granderoche.com

## ROGGELAND COUNTRY HOUSE RESTAURANT 40

+27 (0)74 134 3305  
roggelandmoerat@gmail.com  
www.moeratevents.co.za

## VOLKSMOND COFFEE & CURIO SHOP 50

+27 (0)21 863 2800  
volksmond@taalmunument.co.za  
www.taalmuseum.co.za

## CATTLE BARON GRILL AND BISTRO 31

+27 (0)21 872 5577  
paarlbistro@cattlebaron.co.za  
www.cattlebaron.co.za

## SLUG & LETTUCE 41

+27 (0)21 863 3980  
paarl@slugandlettuce.co.za  
www.slugandlettuce.co.za/paarl

## WIESENHOF COFFEES AT BOSCHENMEER GOLF ESTATE 51

+27 (0)21 863 1209  
wiesenhoffunctions@outlook.com  
www.wiesenhofcoffees.co.za

## WELLINGTON SUNDAY &amp; CHILD FRIENDLY LOCATIONS – DIRECTORY

## WINE ESTATES

## DIEMERSFONTEIN WINES

52

+27 (0)21 864 5050  
online@diemersfontein.co.za  
www.diemersfontein.co.za

## DOOLHOF WINE ESTATE

53

+27 (0)21 873 6911  
wine@doolhof.com  
www.doolhof.com

## DUNSTONE WINES

54

+27 (0)21 873 6770  
stay@dunstone.co.za  
www.dunstone.co.za

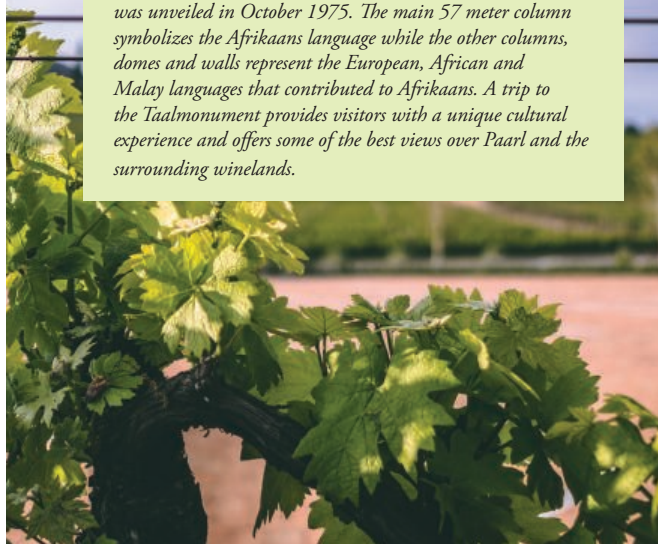
## WELVANPAS FAMILY VINEYARDS

55

+27 (0)21 864 1239  
welvanpas@gmail.com  
www.welvanpas.co.za

## DID YOU KNOW?

*The only monument to a living language in the world is situated on the slopes of the Paarl Mountain. **The Afrikaans Taalmonument, or Afrikaans Language Monument**, was unveiled in October 1975. The main 57 meter column symbolizes the Afrikaans language while the other columns, domes and walls represent the European, African and Malay languages that contributed to Afrikaans. A trip to the Taalmonument provides visitors with a unique cultural experience and offers some of the best views over Paarl and the surrounding winelands.*



## RESTAURANTS

AU D'HEX ESTATE  
RESTAURANT

56

+27 (0)21 873 0394  
bookings@audehex.co.za  
www.audehex.co.za

## THE STONE KITCHEN

59

+27 (0)21 873 6770  
food@dunstone.co.za  
www.dunstone.co.za

OUDE WELLINGTON  
RESTAURANT

57

+27 (0)21 873 2009 / +27 (0)82 836 8924  
reservations@bbbs.co.za  
www.wellington.co.za

## PIZA-E-VINO

60

+27 (0)21 873 1256  
pev@vdcwines.com  
www.vdcwines.com

## THE GRILL ROOM

58

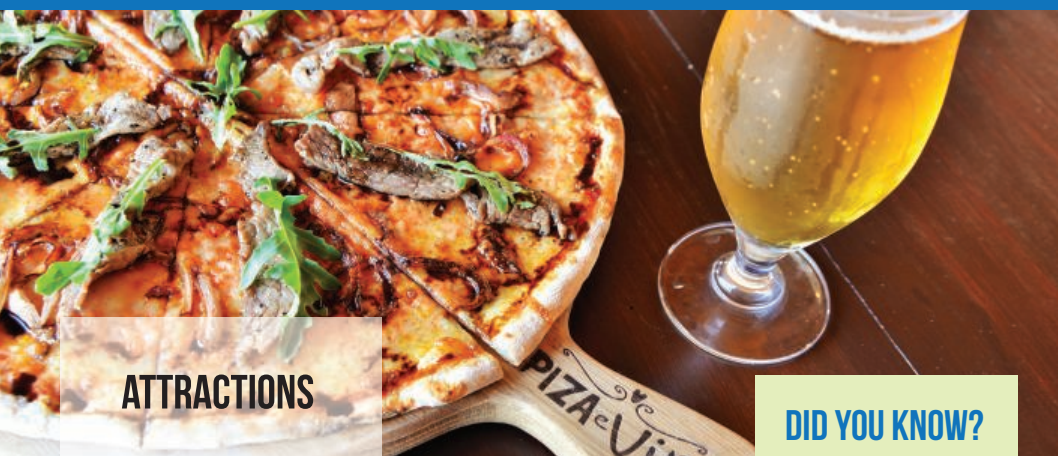
+27 (0)21 873 1256  
lg@vdcwines.com  
www.vdcwines.com

THE TASTING ROOM  
AT DOOLHOF

61

+27 (0)21 873 6911  
wine@doolhof.com  
www.doolhof.com





## ATTRACTIONS

### BARTHOLOMEUS KLIP FARMHOUSE MTB TRAIL & HIKING TRAIL 62

+27 (0)22 448 1087 / +27 (0)82 829 4131  
info@bartholomeusklip.com  
www.bartholomeusklip.com

### BARTHOLOMEUS KLIP FARMHOUSE NATURE DRIVE 63

+27 (0)22 448 1087 / +27 (0)82 829 4131  
info@bartholomeusklip.com  
www.bartholomeusklip.com

### DOOLHOF WINE ESTATE HIKING TRAILS 64

+27 (0)21 873 6911  
wine@doolhof.com  
www.doolhof.com

### DUNSTONE WINES MOUNTAIN BIKE TRAIL 65

+27 (0)21 864 1504  
stay@dunstone.co.za  
www.dunstone.co.za

### LIMIETBERG NATURE RESERVE HIKING TRAIL & RECREATIONAL FISHING 66

+27 (0)21 482 0190  
reservations.alert@capenature.co.za  
www.capenature.co.za



## DID YOU KNOW?

**Welvanpas Family Vineyards** with its picturesque setting, dates back to 1705 and has been the home of the Retief family for ten generations. Currently the farm is owned by Dan and Retha Retief.

### OU KAYA PADSTAL & KWEKERY 67

+27 (0)73 665 6703  
Oukayapadstal1@gmail.com  
www.wellington.co.za

### WELLINGTON GOLF CLUB 68

+27 (0)21 873 4762  
info@wellgolf.co.za  
www.wellgolf.co.za

### WELVANPAS FAMILY VINEYARDS HIKING AND MTB TRAILS 69

+27 (0)21 864 1239  
welvanpas@gmail.com  
www.welvanpas.co.za





PERDEBERG

PERDEBERG

WINDMEUL

RIDGEBACK WINES

R44

R312

PAARL MOUNTAIN

SUID-AGTER PAARL ROAD

R44

LANDS-KROON

SPICE ROUTE

FAIRVIEW

EXIT 47

EXIT 39

R304

R44

MITRE'S-EDGE

N1

R101

32

11  
26 = 16  
27





# WEDDINGS & CONFERENCES MEANDER



## CELEBRATE YOUR DAY IN THE CAPE WINELANDS!

Is there a more peaceful, relaxed and at the same time, exhilarating venue for a conference or wedding in an historic or modern venue, than in the scenically splendid heart of the Paarl Winelands?

Whether you require the services of a wedding planner, that perfect venue, professional caterer, florist, musicians, a photographer to capture these never-to-be-repeated moments in your life, **Paarl has it all.**

## CONFERENCES IN PAARL

Conferences, corporate functions and meetings, product launches, end of year functions, gala dinners, incentives, brainstorming sessions and team-building can be accommodated in one of the many venues throughout the Drakenstein Valley. Some venues offer marquees or Bedouin tents set up on sprawling emerald-green lawns with magnificent vineyard and mountain views – and wine to complement the experience.

Most venues can be tailored to your personal needs, from equipment to catering services and professional teams to assist with your arrangements. The scenic splendour of the town and surrounds makes it a prime conference destination that hosts both national and international events. Contact the Tourism Office on telephone 021 872 4842 for more information on available venues and services.



## WEDDINGS IN PAARL PEARL OF THE CAPE WINELANDS

Paarl's unique location in the heart of the Cape Winelands makes it the **destination of choice** for many a bride-to-be.

**Your wedding is the most important** and special day in your life, where wonderful memories are made and friendships and family bonds are cemented. Your wedding day should be special enough to entice you to return to our valley from time to time over the years.







### DID YOU KNOW?

*The historical and intimate chapel at Grande Roche Hotel can only seat 12 people and was an original slave church.*



## WEDDINGS IN WELLINGTON HEART OF THE CAPE WINELANDS

Wellington's scenic beauty, tranquil surroundings and proximity to Cape Town have made it an increasingly **preferred destination** for conferences, seminars, workshops, team-building, conventions and product launches, as well as concerts, weddings and private functions.

A cross-section of **well-equipped venues** are located in and around the town and surrounding Winelands and have the facilities, services and staffing to accommodate large-scale or small, intimate gatherings and to ensure an expertly-organised, professional and memorable occasion.

Most venues can be tailored to your specifications and requirements and hosts can assist with advice on musicians, photographers, wedding planners and special occasion caterers.

Add to the mix, the finest of wines from the region and you have the ingredients to make your occasion a very special and memorable one.



The **romance of this small authentic wine valley** is a huge attraction for those wanting to tie the knot in a picturesque country setting.

# PAARL WEDDINGS & CONFERENCES MEANDER – DIRECTORY

## CALAIS

01

+27 (0)21 868 3888  
info@calais.co.za  
www.calais.co.za

## DIAMANT ESTATE

02

+27 (0)79 958 9660  
info@diamantestate.com  
www.diamantestate.com

## D'OLYFBOOM

03

+27 (0)21 870 1080  
info@dolyfboom.co.za  
www.dolyfboom.co.za

## DOMAINE BRAHMS

04

+27 (0)21 869 8570  
brahms1@iafrica.com  
www.domainebrahms.co.za

## FREEDOM HILL

05

+27 (0)21 867 0085  
events@freedomhill.co.za  
www.freedomhill.co.za

## GRACELAND VENUES

06

+27 (0)72 264 4009  
conny@gracelandvenues.co.za  
www.graceland-venues.co.za

## GRANDE ROCHE

07

+27 (0)21 863 5100  
events1@granderoche.co.za  
www.granderoche.com

## HISTORIUM

08

+27 (0)21 872 2022  
info@historium.co.za  
www.historium.co.za

## L'HUGUENOT VENUE & VINOQUE

09

+27 (0)72 244 8495  
barbara@lhuguenot.com

## LA PARIS

10

+27 (0)21 867 0171  
events@laparis.co.za  
www.laparis.co.za

## LE BONHEUR

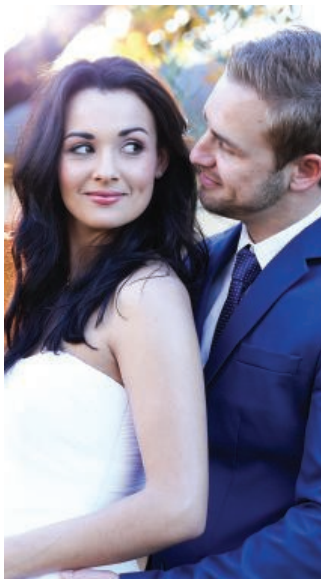
11

+27 (0)21 863 1142  
info@lebonheurocrofarm.co.za  
www.lebonheurocrofarm.co.za

## LEMOENKLOOF

12

+27 (0)21 872 3782  
info@lemoenkloof.co.za  
www.lemoenkloof.co.za



## MOUNTAIN SHADOWS

13

+27 (0)21 862 3192  
queries@mountainshadows.co.za  
www.mountainshadows.co.za

## NANTES ESTATE

14

+27 (0)21 869 8785  
venue@nantesestate.co.za  
www.nantesestate.co.za

## NELSON WINE ESTATE

15

+27 (0)21 869 8453  
erina@nelsonscreek.co.za  
www.nelsonscreek.co.za

## PEARL VALLEY

16

+27 (0)21 867 8000  
events@pearlvalley.co.za  
www.pearlvalley.co.za

## RHEBOKSKLOOF

17

+27 (0)21 869 8386  
functions@rhebokskloof.co.za  
www.rhebokskloof.co.za

## ROGGELAND COUNTRY HOUSE VENUE

18

+27 (0)74 134 3305  
roggelandmoerat@gmail.com  
www.moeratevents.co.za

## THE VENUE AT PEARL MOUNTAIN

19

+27 (0)72 391 8936  
thevenue@pearlmountain.co.za  
www.pearlmountain.co.za

## UNDER OAKS

20

+27 (0)21 869 8535  
info@underoaks.co.za  
www.underoaks.co.za

## VONDELING

21

+27 (0)21 869 8339  
info@vondelingwines.co.za  
www.vondelingwines.co.za

## WIESENHOF COFFEES AT BOSCHENMEER (VENUE)

22

+27 (0)21 863 1209  
wiesenhoffunctions@outlook.com  
www.boschenmeergolf.co.za



## BARTHOLOMEUS KLIP FARMHOUSE

23

+27 (0)82 829 4131 / +27 (0)22 448 1087  
info@bartholomeusklip.com  
www.bartholomeusklip.com

## HUGENOTE HIGH SCHOOL

27

+27 (0)21 873 1078/ +27 (0)21 873 2111  
admin@hugnoteskool.co.za  
www.hugnoteskool.co.za

## MONTE VIDÈO GUEST HOUSE

31

+27 (0)21 873 4765  
info@montevideo.co.za  
www.montevideo.co.za

## BREYTENBACH SENTRUM

24

+27 (0)21 873 2786  
info@breytenbachsentrum.co.za  
www.breytenbachsentrum.co.za

## HUGENOTE PRIMARY SCHOOL

28

+27 (0)21 873 1362  
admin@hugprim.co.za  
www.hugprim.co.za

## NEO VENUE

32

+27 (0)72 997 5344  
neo@kleinevalleij.co.za  
www.kleinevalleij.co.za

## DIEMERSFONTEIN WINE & COUNTRY ESTATE

25

+27 (0)21 864 5050  
conference@diemersfontein.co.za  
www.diemersfontein.co.za

## LADY LOCH COUNTRY HOUSE

29

+27 (0)21 873 1430  
info@ladyloch.com  
www.ladyloch.com

## THE LITTE FARM ON A STREAM

33

+27 (0)82 573 1046  
littlefarm@onastream.co.za  
www.onastream.co.za

## GRAND DEDALE COUNTRY HOUSE

26

+27 (0)21 873 4089  
info@granddedale.com  
www.granddedale.com

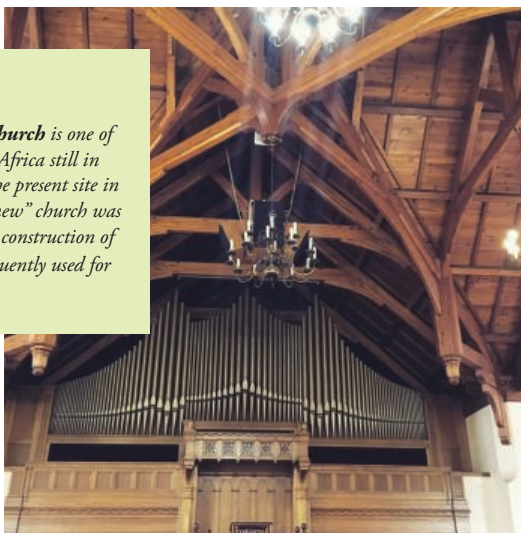
## LEEUEWRIVIER VENUE

30

+27 (0)82 802 1369/ +27 (0)21 873 3628  
demarlene.kruger@leeuwrivier.co.za  
www.leeuwrivier.co.za

### DID YOU KNOW?

*The Strooidak (Thatched Roof) Church is one of the oldest church buildings in South Africa still in use today. The church was built on the present site in 1717 and remained in use until a "new" church was built in 1805, due to the weakening construction of the old building. Today it is also frequently used for wedding ceremonies.*











# TOUR GUIDES & OPERATORS



## HISTORICAL TOUR

Join tour guide, Hybré van Niekerk, for a **half or full day historical tour**. The tour starts at **Het Gesticht Museum**, the fourth oldest church building in South Africa. Here visitors will receive a guided tour of this old slave church built in 1813. A Guided 1 km walk of our **beautiful Main Street**, focusing on the **history, architecture** and hidden stories lying beneath these majestic manor houses and buildings. The tour takes about 2 to 2.5 hours; visitors should wear comfortable shoes and preferably a hat during summer. From November to March the tours will be conducted at 9am and 5pm. From April to October it will take place at 11am and 3pm. Tours will take place as per booking.

Groups of 4 can also opt for a **private guided tour** that will include a cultural lunch and of course a wine tasting to end the day. Other excursions offered to a minimum of 2 people are the **Slave Route** and the **Pannevis Route**.

## LET US HELP YOU FIND YOUR WAY

The beauty of Paarl and Wellington's blissfully bucolic countryside, rugged mountains, inviting rivers and sweeping vineyards, encourage exploration on foot, by mountain-bike, on horseback, on a motorcycle, or by car. The best way however to take in the scenic beauty and get to know the hidden gems of the winelands is to use the professional services of a guide.



## WELLINGTON WINE WALK

Wellington Wine Walk is a very popular **three or four-day hiking trail** in the foothills of the Hawequa Mountains, which frame Groenberg and Wellington. The walk stretches through vineyards, olive orchards, fields of buchu and vine cutting plantations, with overnight stays in guest houses on some of the historic Huguenot farms.

Delicious picnic lunches, tastings of the wholesome olives and wines are all included in the trail.





## AT YOUR DOOR SHUTTLE SERVICES

+27 (0)83 395 6854  
atyourdoorshuttle@gmail.com

## MISSION VISION TOURS

+27 (0)82 552 4082  
deonkit@mweb.co.za  
www.missionvisiontours.com

## SHUTTLE CREW

+27 (0)81 441 4418  
info@shuttlecrew.co.za / thysg@live.co.za  
www.shuttlecrew.co.za

## BELAFRIQUE YOUR TRAVEL PLANNER

+27 (0)82 905 2311  
isabelle@belafrique.com  
www.belafrique.com

## I & F ELEGANT COUNTRY TOURS

+27 (0)82 924 6182  
ifkay@mweb.co.za  
www.ifafricatours.co.za

## THE BEER ROUTE

+27 (0)82 885 0118  
graeme.gerber72@gmail.com  
www.thebeeroute.co.za

## CHRIS DU PLESSIS TRANSPORT

+27 (0)82 490 5316  
duplessischris99@gmail.com

## KONTREI TRAVELLER

+27 (0)71 972 8540  
info@kontrei.co.za  
www.kontrei.co.za

## VliegDag Freedom Co.

+27 (0)62 046 8532  
egan@vliegDag.com  
www.vliegDag.com

## CONNECT U 2 NATIONS

+27 (0)72 851 1460  
connectu2nations@gmail.com

## PAARL DE VILLE (PARTY BUS)

+27 (0)84 523 3814  
ilana@paarldeville.co.za  
www.paarldeville.co.za

## WINELANDS SIGHT SEEING

+27 (0)78 706 9560  
winelandsightseeing@gmail.com

## DJ TOURS & SAFARIS

+27 (0)82 395 8101  
dirk@djtourssandafaris.co.za  
www.djtourssandafaris.co.za

## PAARL HISTORICAL WALK & TOURS

+27 (0) 65 905 8197  
info@paarlhistoricaltours.co.za  
www.paarlhistoricaltours.co.za

## XL BOLAND TRAVEL

+27 (0)83 225 3383  
marianne@bolandtravel.net  
www.bolandtravel.net

## CAPE WINELANDS TOURS

The best way to explore the winelands is to make Paarl your basis from where you can explore Cape Town (65 km from Paarl) and other towns within the winelands. Bespoke tours can be booked with a tour guide that will include wine tasting, lunch and so much more.

### DID YOU KNOW?

*Michel de Nostredame, usually Latinised as Nostradamus, paid a visit to Paarl. He was a French physician and reputed seer who published collections of prophecies that have since become widely famous.*