



TWO BEDROOM PRESIDENTIAL SUITE

Indulged with every conceivable luxury, the 383m²/4,122ft² Presidential Suite features two bedrooms complete with king beds and awe-inspiring views of Table Mountain. Warm, neutral fabric imparts a residential feeling and sumptuous pillows provide splashes of colour throughout. The master bedroom includes his-and-hers bathrooms, each with a rain shower private water closet and marble vanities. Located in the crescent shaped Marina Rise, open-air terraces perfectly overlook Table Mountain and the Victoria & Alfred Waterfront, while original works of art and photography from South Africa's most prominent artists adorn the foyer, entertainment area and dining room. Seating up to 10 guests, this can be used for a private dinner or business meeting. A fully-equipped kitchen, with a separate entrance, allows the dedicated Guest Host access for your convenience. Completing this luxurious suite is a fully equipped personal gym. **A private chef can be pre-arranged at an additional charge.*

ALL ROOM RATES ARE INCLUSIVE OF THE FOLLOWING

- Full Concierge service
- Personalised welcome drink upon arrival
- Breakfast spread & a la carte hot meals in ROOI Restaurant daily
- Complimentary wireless internet throughout the resort
- Use of the exclusive Spa Thermal Suites
- Use of the state-of-the-art Fitness Centre
- Secure underground parking
- Transfers to and from the V&A Waterfront (subject to availability)
- Housekeeping service twice daily at your convenience
- One&Only bottled mineral water daily (sparkling/still – dependent on preference)

SUITE FACILITIES

- Master bedroom with king bed and ensuite bathrooms, including steam shower
- Second bedroom with king bed and ensuite bathroom
- Extensive walk-in closets
- Full-sized bathroom amenities with bathrobes, slippers and fresh flowers
- Open plan lounge and dining areas with extensive balcony
- Gas remote controlled fireplace
- Second media lounge with work desk
- 65-inch flat screen TV in bedrooms and lounge
- 10-seater dining room or boardroom table with separate guest WC
- Full kitchen with butler access, ensuring all services remain discreet
- Fully stocked bar fridge, Coffee bar with local Cape coffee selection
- Private gym with TechnoGym equipment including a variety of weights, a spinning bike and treadmill.
- Personal in-room safe

FOR THE FAMILY

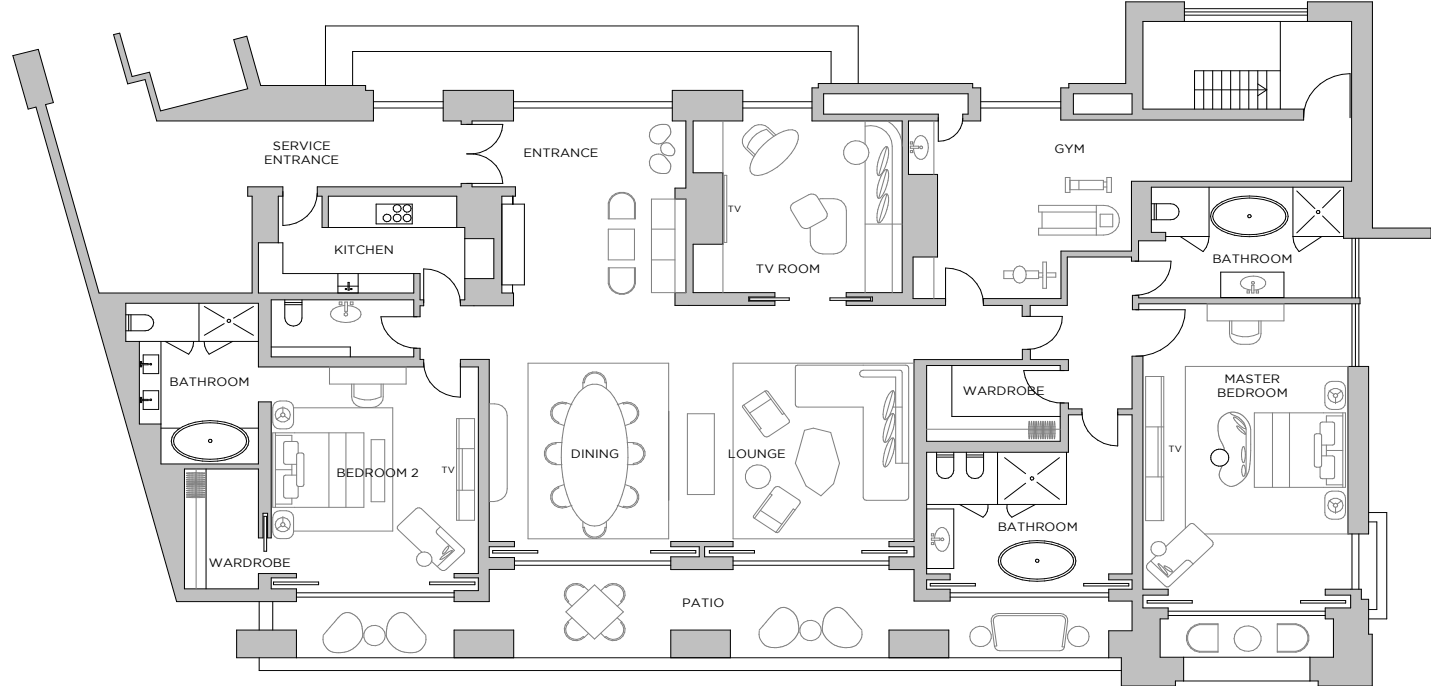
- Age-appropriate welcome gifting
- Complimentary use of KidsOnly Club facilities, including daily programme of supervised activities for 4 - 11-year-olds
- Babysitting facilities (on request at an additional charge)
- Baby convenience items and toiletries available upon request
- Complimentary use of: Baby cot, highchair, bottle warmer, sterilizer and microwave
- Kids' turndown

ADDITIONAL SUITE AMENITIES

- Complimentary transfers to and from Cape Town International Airport
- Dedicated Guest Host throughout a Table Mountain Suite stay
- Complimentary personalised boutique wine rack containing six bottles of South African Wines - chosen after an introduction to One&Only Cape Town's Head Sommelier, Luvo Ntezo
- Complimentary Personal Pantry containing local spirits and non-alcoholic beverages, inclusive of in suite cocktail bar set up with bespoke Fynbos-infused Liqueur Gin
- Signature and local snack jars
- 30-minute in-suite Gym orientation
- Garment pressing service daily - two outfits per guest
- Preferential seating times at all resort restaurants
- Isola Poolside Cabana will be reserved on request for the duration of the stay
- Exclusivity of ROOI Tasting Table for private dinner (to be booked at least 24 hours in advance) – subject to availability



TWO BEDROOM PRESIDENTIAL SUITE FLOOR PLAN



oneandonlycapetown.com

+27 21 431 5800 | reservations@oneandonlycapetown.com
 Dock Road, Victoria & Alfred Waterfront, Cape Town, South Africa