



LEEUESTATES

FRANSCHHOEK · SOUTH AFRICA

LEEUCOLLECTION

## FACT SHEET



## HOTEL OVERVIEW

Leeu Estates, an exclusive five-star premium boutique hotel property with 24 luxuriously appointed rooms and suites, takes a central position on 78 hectares (193 acres) of vineyards, landscaped gardens and fynbos (indigenous vegetation) in the Franschhoek valley. Located between the mountainside and river, just minutes away from the village of Franschhoek, it is the ideal setting for an elegant and sophisticated private hideaway, offering superb comfort, fine dining and platinum service. At the centre of this working wine farm is the meticulously refurbished 19th-century Manor House with its six rooms and suites. There are two rooms adjacent to The Manor House, and the remaining rooms and suites are located in spacious cottages among the gardens, oak trees and vineyards.

An expression of love, the bokkie Garden is very close to founder Analjit Singh's heart. The Afrikaans word "bokkie" means small buck but is also a term of endearment used by South Africans, comparable to "beloved" or "sweetheart". Pivotal to the garden, a meditative and serene space where guests can reconnect with nature and one another, is 'Reflective Resonance' by acclaimed sculptor Angus Taylor. It is a powerful piece of bronze and Belfast granite that has become a Franschhoek landmark.

## LOCATION

**Physical address** Dassenberg Road, Franschoek 7690  
**Postal address** PO Box 188, Franschoek 7690  
**Telephone** +27 21 492 5988 / +27 21 492 2222  
**Facsimile** +27 86 577 1929  
**Website** [www.leeucollection.com](http://www.leeucollection.com)  
**Location** Franschoek, Western Cape, South Africa  
**GPS coordinates** 33°54'22.4" S 19°05'59.8" E

## DISTANCE FROM HOTEL

From	Distance	Driving Time
Cape Town CBD	73 km	60 minutes
Cape Town International Airport	68 km	55 minutes
Franschoek Village	3 km	3 minutes

Please note that time and distances are approximate and may differ according to route and traffic conditions.

## CLIMATE

Franschoek enjoys a mild Mediterranean climate characterised by warm summers (average temperatures range from 15°C to 30°C/60°F to 85°F) and cool winters with some rainfall (average temperatures range from 8°C to 19°C/48°F to 66°F). It is the perfect destination for 'swallows', as summer falls during the northern hemisphere's winter. **WHAT TO PACK** Layering is the way to go as weather can turn from warm during the day to cold at night in both summer and winter. Summer: A swimsuit is essential, along with a sun hat, sunscreen, sunglasses and cool, light clothing. Light jackets or sweaters are recommended for the evenings. Winter: Daytime clothing can be lighter, but evenings require woollens.

## FRANSCHHOEK

The breathtakingly beautiful Franschoek Valley is renowned as one of the world's great food and wine destinations. Settled by the French Huguenots in 1688, it has retained its Gallic charm and character. At the heart of the valley is the romantic village of Franschoek. Within easy driving distance from Franschoek, one can enjoy the pristine beaches of the Cape, play a round of golf or experience some of the best land-based whale watching in Hermanus.



## ACCOMMODATION

There are 24 contemporary classic, individually styled rooms and suites filled with customised architectural detailing and tactile textures in a calm colour scheme. Each one features carefully curated artworks and sculptures from various countries, luxurious extras and superbly equipped marble bathrooms. Many have their own terraces and fireplaces, and all enjoy idyllic vineyard and mountain views.

The rooms are all within walking distance to The Dining Room, La Petite Colombe, Mullineux & Leeu Family Wines Wine Studio, Leeu Spa and Everard Road – Leeu Estates. And guests have access to several walking trails on the estates, to meander through the vines.

### ROOM FACILITIES

Rooms are equipped with premium technology and include:

- Media hub, high-speed Wi-Fi access, including international sockets/adapters
- Writing desk
- In-room tea and coffee facilities
- Air conditioning
- Underfloor heating in the rooms
- High-definition flat-screen smart television
- Electronic safe
- 100% Egyptian Cotton linen
- Bathrobes and slippers
- Double vanities
- Heated towel rails
- Hairdryer
- Voltage 220V – with built-in international adapter plugs and USB points

### COMPLIMENTARY SERVICES

- Breakfast (07h00 – 10h30)
- Minibar
- Unlimited Internet access
- All national phone calls
- Full-service concierge
- Valet parking/secure limited parking area
- Scheduled shuttle service between the properties
- Signature Tasting of Mullineux & Leeu Family Wines at The Wine Studio, per guest per stay

Excluded

- Other meals • In-room dining • International phone calls • Dry-cleaning/laundry
- Transport (helicopter or shuttle) • Gratuities



## ROOMS, SUITES AND COTTAGES GRID

CATEGORIES	Size (m <sup>2</sup> / ft <sup>2</sup> )	LOCATION (NUMBER OF ROOMS)	DETAIL
Classic	42/452	Manor House (2), Max House (2), Protea House (1) = <b>(5)</b>	
Deluxe	55/592	Manor House (1), Cellar Cottage (1), Protea House (1) = <b>(3)</b>	
Studio (Includes Pomegranate Cottage)	63/678	Manor House (1), above Spa (2), Pomegranate Cottage opposite the herb garden (1), = <b>(4)</b>	
Executive Suite	94/1 011	Manor House (1), Max House (1) - <b>(2)</b>	
Executive Suite with Terrace	115/1 238	Cellar Cottage (1), Protea House (1) = <b>(2)</b>	
Manor House Suite	115/1 238	Manor House (1)	With Hot Tub, Fire Pit, Telescope, and a private sculpture
Terroir Cottage	103/1 109	Cellar Quarter, next to Wine Studio	Max 3 adults, enclosed terrace
Vineyard Cottage	168/1 808	Next to Spa <b>(2)</b> – rooms cannot be booked independently	Max 4 adults, plunge pool
The Oaks	98/1 020	Fynbosch Quarter <b>(2)</b> - rooms cannot be booked independently	Max 4 adults, hot tub
Fynbosch Cottage	130/1 400	Fynbosch Quarter <b>(1)</b>	Max 2 adults, pool, hot tub
<b>TOTAL</b>		<b>24</b>	
		<b>COTTAGES</b>	
Terroir Cottage	103/1 109	Cellar Quarter, next to Wine Studio	Max 3 adults, enclosed terrace
Cellar Cottage	186/2 001	Cellar Quarter, next to Wine Studio <b>(2)</b>	Max 4 adults
Max House	213/2 297	Cellar Quarter, next to Wine Studio <b>(3)</b>	Max 6 adults
Vineyard Cottage	168/1 808	Next to Spa <b>(2)</b> – rooms cannot be booked independently	Max 4 adults, plunge pool
Fynbosch Cottage	130/1 400	Fynbosch Quarter <b>(1)</b>	Max 2 adults, pool, hot tub
The Oaks	98/1 020	Fynbosch Quarter <b>(2)</b> - rooms cannot be booked independently	Max 4 adults, hot tub
Protea House	206/2 220	Fynbosch Quarter <b>(3)</b>	Max 6 adults, shared pool, pool house, barbeque area

*Children are welcome and a cot can be made available in any room except the Manor House bedrooms.*

*The Manor House bedrooms can accommodate children aged 13 and older.*



## THE LIVING ROOM

---

This beautifully appointed room with bespoke shagreen and bone cabinet opens onto the terrace, where guests can sit back and relax or mingle and chat while enjoying views of the garden and mountains.



## THE BAR

---

Situated in the Manor House, with views over the manicured lawns towards the Franschoek valley, the bar including an expansive deck is a refined space in which to relax and soak up the sophisticated surroundings.



## INDABA

---

Indaba – The Meeting Place at Leeu Estates is a state-of-the-art multipurpose event and meeting venue for in-house Leeu Collection guests. Inspiring artworks enhance this multipurpose venue and private terrace, designed for a variety of functions: Press briefings, seminars, business meetings, exhibitions and launches. Catering for on-site dining is done by The Dining Room culinary team.



## THE WINE STUDIO

---

In this boutique tasting venue, guests can sample handcrafted premium wines from Mullineux & Leeu Family Wines (one complimentary Signature Tasting per Leeu Estates guest per stay). To date, this award-winning collection has received 31 five-star ratings from Platter's South African Wine Guide and is made by winemakers Chris and Andrea Mullineux.

Open seven days a week from 10h00 to 17h00 (closed on certain public holidays).



## DINING

The Dining Room on Leeu Estates offers residents the option of never having to leave the property if they so desire. With comprehensive menu offerings and options to personally tailor your dining experiences (even the little ones are catered for exclusively), leisurely meals and fine vintages within the Mullineux and Leeu Family Wines and Great Heart Wines range from the cellar can be enjoyed in the conservatory, the deck and bar.



La Colombe, the award-winning and world-renowned restaurant based in Constantia, one of the oldest winemaking regions of South Africa, has established a sister restaurant at Leeu Estates, run by the talented La Petite Colombe team. Visitors to the epicurean valley of Franschhoek can now look forward to experiencing the same level of service excellence and exquisite cuisine that put La Colombe on the map. The Franschhoek kitchen is headed up by talented chef Peter Duncan. Tasting menus focus on the finest local and seasonal produce, recommended with a rare and fine wine selection.



Sister property Le Quartier Français is home to Protégé, a casual fine dining eatery that recognises talented young chefs and provides them with an opportunity to put themselves on the map. Guided by Scot Kirton, the restaurant offers an experience that the residents can call “home”, the menu is seasonal and highlights fresh and local produce, as well as Épice, which serves an array of delectably curated dishes, in a fine-dining restaurant featuring a flavour-packed menu inspired by the team’s global culinary expeditions.

## LEEU SPA

---

A serene, contemporary wellness space designed to restore both body and mind.

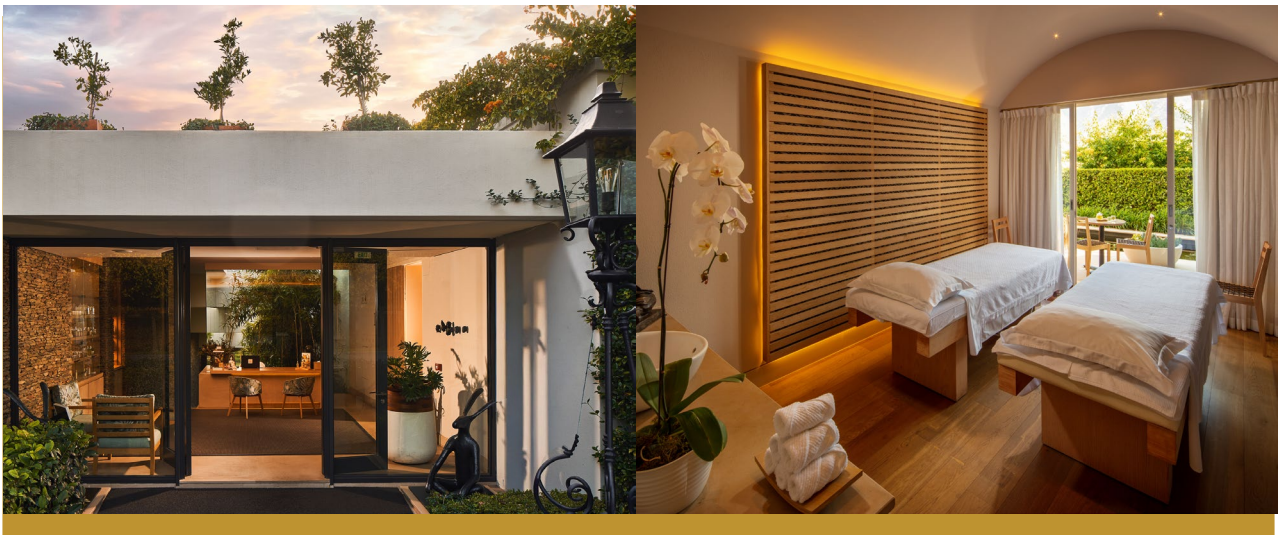
Tailored treatments, inspired by Africa's rich heritage, are delivered by skilled therapists in a peaceful atmosphere. Leeu Spa offers four treatment rooms, along with separate changing areas and steam rooms for male and female guests. The tranquil plunge pool overlooks a lily pond, creating a quiet pause between treatments and guests are invited to enjoy the relaxation lounge pre and post treatments.

Leeu Spa by Healing Earth is open Monday to Sunday from 10h00 to 19h00.

All spa guests are welcome to use the steam room and plunge pool.

### Facilities include:

- Four treatment rooms, comprising of three couples treatment rooms and one single treatment room
- His and hers changing and steam rooms
- Plunge pool overlooking a tranquil lily pond



## LEEU GYM

---

The spacious gym with its premium TechnoGym fitness equipment offers framed views of the majestic mountains. The gym, which caters exclusively to resident Leeu Collection guests, is open seven days a week, from 07h00 to 19h00.

### Equipment includes:

- Professional treadmill for effective cardiovascular training
- Professional exercise bike combining comfort and performance
- Crossover – the latest addition to the Excite+ line combines lateral movement and total body training for maximum results
- Vario – cardiovascular equipment that follows the user's pace and adapts to the desired movement
- Plurima – intuitive and safe to use, this modular, compact and versatile system allows complete body training for both muscular toning and strength improvement

## EVERARD READ – LEEU ESTATES

---

Everard Read's newest gallery at Leeu Estates in Franschhoek augments the existing gallery in the high street of Franschhoek. The focus will be on showing monumental sculpture in the breathtaking fynbos and vineyards of Leeu Estates, as well as exhibiting important works by our artists in the purpose-built gallery on site. The Fynbosch quarter, where the new gallery is located on the farm, was designed by DHK architects, who also designed the Norval Foundation. The gallery benefits from the experience garnered there, with understated but immaculate finishes that show the art to its best advantage, while offering glimpses of the spectacular natural environment that surrounds Leeu Estates. The gallery complex includes a studio and cottage for an artist residency programme which will provide a tranquil retreat for artists to focus on developing new ideas and generate interesting content for the gallery.



## LEISURE FACILITIES

---

- Landscaped property with Bokkie Garden and sculptures by leading South African artists throughout the gardens
- Three 15-metre (49-foot) swimming pools
- Leeu Spa
- Picnics (as selected spots around the Estate)
- Braai (BBQ) when booked with certain cottages and event spaces
- Little Green Fingers (gardening activities for the little ones)
- Leeu Locally Grown Garden Walks (subject to availability)
- Mullineux & Leeu Family Wines Wine Studio on Leeu Estates
- The Great Heart Wine Boutique at Le Quartier Français
- Nature trails (river, mountain and vineyard)
- Everard Read Leeu Estates on Leeu Estates and Everard Read Franschhoek at Le Quartier Français



---

## RESERVATIONS

---

Children are welcome and can be accommodated in cots and on sofa beds in selected rooms.

We accept American Express, Diners Club, MasterCard and Visa.

Check-in 14h00 | Check out 11h00

Reservations +27 (0) 21 492 2222

Hotel +27 (0) 21 492 5988

Email [reservations@leeucollection.com](mailto:reservations@leeucollection.com)

You may sign up to our [newsletter here](#) and follow our social media platforms, [Facebook](#), [Instagram](#) and [X](#) to stay up to date with our on-property experiences.