



# *Alphouse Island*

## FACT SHEET

A TRULY REMOTE DESTINATION OF INCREDIBLE NATURAL BEAUTY

[www.bluesafari.com](http://www.bluesafari.com)

APRIL 2020

# LOCATION

## *Pristine and Pure*

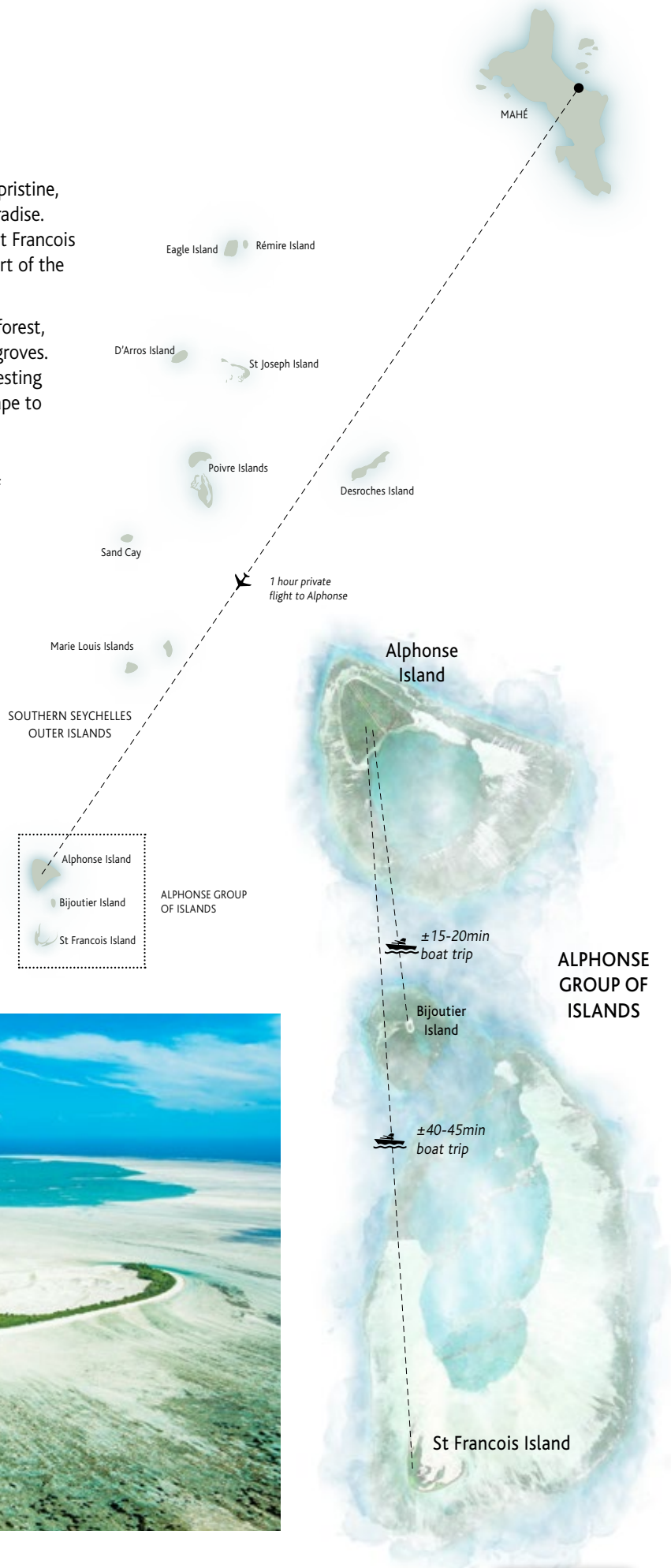
The Alphonse Group of Atolls is considered one of the most pristine, untouched Edens of the world, making it a nature lover's paradise. The magnificent island threesome comprising of Alphonse, St Francois and Bijoutier lies in the very heart of the Indian Ocean as part of the Seychelles Outer Islands.

Beautiful white beaches line the edges of the dense natural forest, interspersed with the remnants of old commercial coconut groves. Here ancient ambling tortoises, scurrying crabs and an interesting array of bird species can be found. Alphonse Island is an escape to the exquisite simplicity of a tropical island paradise, leaving behind the impositions of everyday life.

The raw beauty of an untouched natural sanctuary in one of the prime marine environments in the far reaches of the Indian Ocean can be experienced here...

### AT A GLANCE

- Open all year round.
- Located 400 km [250 miles] southwest of Mahé in the Seychelles.
- Situated only 7° south of the equator.
- Alphonse Island is a one hour flight from Mahé.
- Bi-weekly flights between Mahé and Alphonse on Saturdays and selected Wednesdays.
- Miles of unblemished shorelines, lagoons and sea flats.
- Pristine & Private – only 22 Beach Bungalows and five Beach Suites.
- One of the most remote inhabited islands in the Seychelles.





# WEATHER

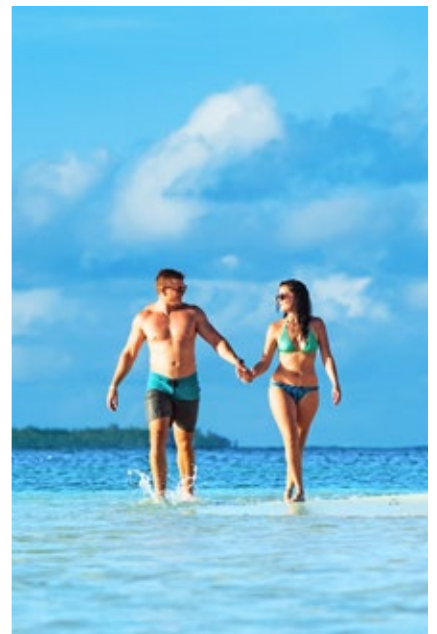
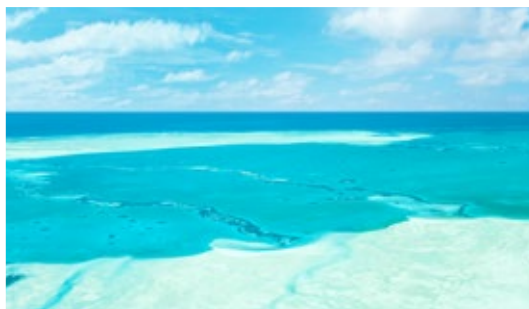
*Where it is Always Summer*



Situated only 7° south of the equator and outside of the cyclone belt, Alphonse Island is blessed with one of the world's healthiest climates and gorgeous, consistent weather. Alphonse offers guests year-round summer days with temperatures seldom dropping below 22°C [72°F].

The northwest trade winds prevail from the end of September to the beginning of May, which are the hottest and wettest months with humidity averaging 65%. Tropical rain showers are usually short and sharp.

Seychelles is typically hot and somewhat humid, with mid-day temperatures hovering at  $\pm 35$  degrees Celsius [ $\pm 90^\circ\text{F}$ ]. Although it's always a good time to visit the Seychelles, different times of the year may be better suited to particular interests. The southeast trade winds increase from May to September, resulting in slightly lower temperatures and less humidity.



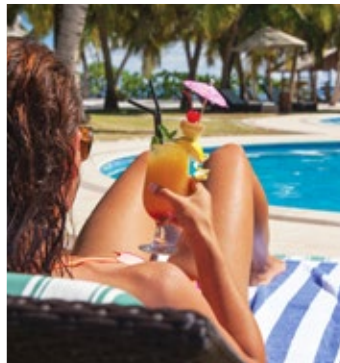


# THE RESORT

## *Exotic Simplicity*

Alphonse Island features a single resort comprising of Beach Bungalows and Beach Suites built alongside the water's edge, each with scenic ocean views. Freedom of movement around the island on foot or bicycle permits self-discovery of the wonders of this special place.

The main hotel complex consists of a reception area, beach bar, restaurant, swimming pool, tennis court and main office. Guests stay in one of 22 privately spaced air-conditioned Beach Bungalows, five one-bedroom Beach Suites or two Beach Villas offering every kind of comfort. The bar area, pool and lounge area provide the ideal venue to relax in the evening breeze after a day out in the sun and houses the restaurant which serves freshly caught fish of the highest quality.



### AT A GLANCE

- Le Lys Bar & Dining Area
- Bijoutier Restaurant
- Smoothie Café in the Veggie Garden
- Entertainment area with Snooker Table & Table Tennis
- Lounge Area / Beach Bar with Wi-Fi
- Beach Bar on North Point
- Swimming Pool
- Fully equipped TechnoGym
- Azure Spa offering calming, tranquil treatments such as pedicures, manicures and massages
- Tennis Court
- Giant Chess Board
- Boutique
- Extensive Fishing Centre
- Activity Centre & Padi 5-Star Dive Centre with PADI bubble maker, discover scuba, open water, advanced and specialty scuba courses
- Fly Shop & Barnacles Bar
- Movie Theatre
- Island Conservation Society Research Centre
- Tortoise Sanctuary
- Tree Nursery





# DINING

## *A Fusion of International and Creole Flavours*



The central dining and bar area allows guests to socialize alongside the sparkling pool and shoreline, with diverse cuisine inspired by the island atmosphere and complemented by a comprehensive wine list.

With the use of indigenous flora and fish, along with garden produce, our menus are built around freshness. Combining the influences of local Seychellois Creole and French cuisine, our dishes are inspired from all corners of the Indian Ocean.

In addition to the restaurant, private dining can be arranged to allow guests to enjoy meals on the terrace of their Beach Bungalow or Beach Suite, on a special spot on the beach, or alongside the pool.

### *Exclusive Food & Beverage Experiences*

We have designed an amazing range of exclusive Food & Beverage Experiences to which are ideal to add onto your stay at Alphonse.

[DOWNLOAD EXPERIENCES](#)



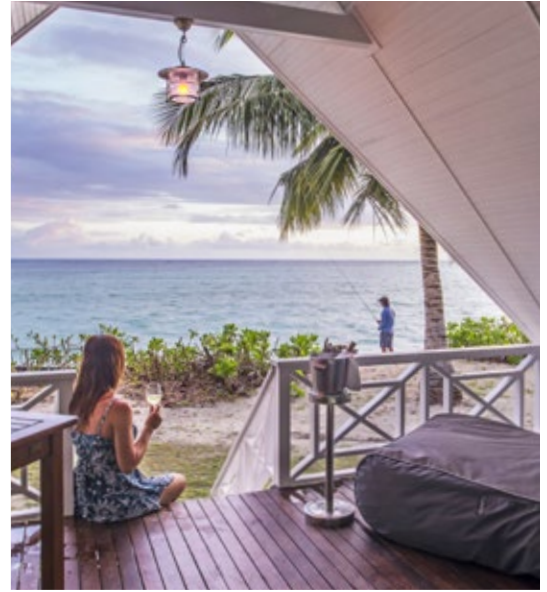
### RESTAURANT HOURS

- Breakfast is served from 06h00 – 10h00.
- Lunch is served between 12h30 and 14h30.
- Dinner is from 19h30 – 21h00 [earlier on request].
- Explore the Island by bicycle with a packed picnic lunch prepared on request at breakfast time.
- Complimentary room service [arranged on request].





# ACCOMMODATION



## Beach Bungalows

The 22 Beach Bungalows are set amongst lush tropical plantations just metres from the beach. Located on the eastern shoreline of the island, the Beach Bungalows are decorated in a unique style that emphasises the raw and natural beauty of the island. With a layout that keeps guests' relaxation foremost in mind, the Beach Bungalows are ideally situated to make the most of the beautiful surroundings.

Each Beach Bungalow has its own verandah, overlooking the turquoise waters of the Indian Ocean. Perfect for watching the sunrise with a cup of coffee or watching the sunset with a cocktail in hand.

### ROOM HIGHLIGHTS

- Just steps from the ocean.
- Own garden, ensuring optimal privacy.
- Bath & Outdoor shower.
- Verandah, perfect for watching the sunrise or sunset.

### AT A GLANCE

- Approx. Size..... 54 m<sup>2</sup>
- Occupancy ..... Two Adults, One Child
- Beds ..... One King / Twin [on request]
- Extra Bed ..... One extra bed or cot
- Bath/Shower ..... Bath & Outdoor Shower
- View..... Deck with Garden & Ocean Views



### ESSENTIALS & AMENITIES

Air-conditioned | Electronic Safe | Mini-bar | Landline Telephone | Beach Towels | Ceiling Fan  
Laundry Service | Beverage Station with Nespresso Machine | Shaver Outlet | Hair Dryer  
Outdoor Shower | Bath Tub | Mosquito Net [on request] | Private Bicycles | Day Bed



# ACCOMMODATION



## Beach Suites

The five Beach Suites are nestled amongst tropical plants, mere steps away from the white sandy beach. The one-bedroomed Beach Suites are spaced for optimum privacy. Complete with a private plunge pool, sun deck, open plan living and bedroom, the Beach Suites are ideal for families, honeymooners and couples alike.

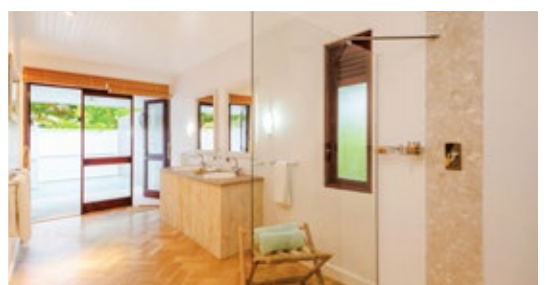
The Beach Suites are decorated in a tranquil natural style. A large patio, overlooking the ocean, provides the ideal spot to relax between island adventures.

### ROOM HIGHLIGHTS

- Extremely spacious.
- Easy beach access, with the ocean only meters away.
- Large lounge area.
- Indoor & outdoor shower.
- Additional guest WC.
- Private plunge pool and deck with sun loungers and relaxation area.

### AT A GLANCE

- Approx. Size ..... 126 m<sup>2</sup>
- Occupancy ..... Two Adults, Two Children
- Beds ..... One King / Two Twin
- Extra Bed ..... Two extra beds or cot
- Bath/Shower ..... Indoor & Outdoor shower
- View ..... Verandah with Garden & Ocean Views



### ESSENTIALS & AMENITIES

Air-conditioned | Electronic Safe | Mini-bar | Landline Telephone | Beach Towels | Ceiling Fan  
Laundry Service | Beverage Station with Nespresso Machine | Shaver Outlet | Hair Dryer  
Outdoor Shower | Bath Tub | Mosquito Net [on request] | Private Bicycles | Sun Loungers



# ACCOMMODATION



## Beach Villas

Two brand-new four-bedroomed villas enhance the accommodation offering at Alphonse Island and compliment the 22 Beach Bungalows and five Beach Suites. The spectacular villas are ideal for multi-generational families, families and friends and each one can sleep up to eight adults and four children.

Offering spectacular panoramic ocean and garden views, each Beach Villas is 600 square metres in size with four generously appointed double bedrooms, all with luxurious island-style en-suite bathrooms. Large, light-filled open-plan living and dining areas include a fully equipped kitchen and lead to a sun deck and private plunge pool. A private chef can be arranged upon request to create bespoke menus for in-villa dining. Both villas include their own golf buggy.

### VILLA HIGHLIGHTS

- Extremely spacious with four en-suite bedrooms.
- Easy beach access, with the ocean only metres away.
- Large open-plan lounge and dining area.
- Outdoor showers.
- Private plunge pool and deck with sun loungers and relaxation area.

### AT A GLANCE

- Approx. Size 600 m<sup>2</sup>
- Occupancy Eight Adults, Four Children
- Beds Four Double Beds
- Extra Bed Four Extra Singles
- Bath/Shower Indoor Bathtub in Master Bedroom and Outside Showers in all four Bedrooms
- View Panoramic Ocean Garden Views

### ESSENTIALS & AMENITIES

- Air-conditioned | Electronic Safe | Mini-bar  
 Landline Telephone | Beach Towels | Ceiling Fan  
 Beverage Station with Nespresso Machine | Wi-Fi  
 Shaver Outlet | Laundry Service | Hair Dryer  
 Outdoor Showers | Indoor Bath Tub in Master Bedrooms  
 Fully Equipped Kitchen | Private Bicycles | Golf Buggy  
 Mosquito Nets in Master Bedrooms | Sun Loungers





# ALPHONSE EXPERIENCES

*Romance, Adventure, Relaxation and Indulgence*



Alphonse Island needs to be experienced to be believed... quiet picnics on secluded beaches, sunset cruises with loved ones, mesmerising encounters with captivating marine life and blissful pampering treatments; all in picture-perfect surroundings that enhance every sensation.

The geographical isolation of Alphonse Island creates an atmosphere of undisturbed solitude where guests forget about the outside world and immerse themselves in all the natural wonders and unique experiences that the island has to offer. An action-packed holiday, romantic sojourn, or an idyllic beach break, Alphonse Island offers both exhilarating and relaxing experiences.

\*\* COMPLIMENTARY ACTIVITIES ON ALPHONSE ISLAND. ALL ACTIVITIES ARE WEATHER AND TIDE PERMITTING.

## ALPHONSE CYCLE TOUR\*\*

A guided tour across Alphonse stopping at major landscapes and seascapes for guests to familiarize themselves with the forest trails and most secret spots on the island. During the tour guests will be informed about the early settlers of Alphonse and the changes from indigenous forest to coconut plantation. Learn about birdlife, fish and plants as you see every corner of the island with our knowledgeable guides.

## BIJOUTIER ISLAND VISIT

Stroll the deserted beaches and swim in crystal clear calm water on Bijoutier Island. This is a hotspot for turtle nesting. Guides will explain the life cycle of the beautiful turtles from hatching to laying their own eggs. Guests may get lucky and peer into the depths of the forest to see the nests of the Wedge-tailed Shearwater, perhaps a mother or chick too!

## FLATS FLY FISHING

The Alphonse Group is one of the most famed saltwater flyfishing destinations in the Indian Ocean and one of the most prolific bonefish fisheries in the world. St Francois is approximately seven miles long and four miles wide, consisting of white sand bottoms interlaced with channels and cuts. Try your hand on a full or half day of fly fishing with our experienced Alphonse Fishing Co. Guides wading over 10 000 acres of hard white sand flats in search of the various species the Alphonse Group has on offer.

## BLUEWATER FISHING

Experience offshore fishing like never before... The unspoilt waters of Alphonse, Bijoutier and St Francois Atolls are home to a vast variety of blue water species. The structure and sheer drop-offs are idyllic for species such as sailfish, wahoo, dogtooth tuna, yellowfin tuna and dorado. On each given day there is an opportunity to fight the reel and target these species for either a full or half day.





### GUIDED FLY FISHING ON ALPHONSE

Based directly on Alphonse Island, the Alphonse Guides are equipped to explore the outer shores right outside your doorstep. Guests get to experience unlimited site fishing like no other from the comfort of the Island. Experience either a full or half day with one of the experienced Guides. On Alphonse guests get to boast about their bonefish species amongst friends at dinner!

### ICS WALK\*\*

Established in 2007, the Island Conservation Society [ICS] Centre has ensured the key aspects of the ecosystem is well maintained and cared for. The ICS team offer activities upon the island such as Turtle Patrol, Giant Tortoise viewing and feeding and bird-watching. This is something everyone on Alphonse holds very close to their hearts. Without their sound knowledge, the ecosystem on the atoll would not be how it is today.

### INDEPENDENT ACTIVITIES\*\*

The cycling / running paths around the island pass through coconut groves and lead to the various private and secluded beaches on Alphonse. Guests

are provided with a map for the directions and distances of these routes. The entertainment area situated near reception has a snooker table and there is table tennis, a giant chess set and a tennis court available near the swimming pool.

Kayaks, paddle boards and stand-up paddle boards are available for guests wanting to explore the island independently. Snorkelling is a great way to see what marine life resides beneath!

### ISLAND SPECIALITIES

Each week guests are offered a few luxuries Alphonse Island is renowned for:

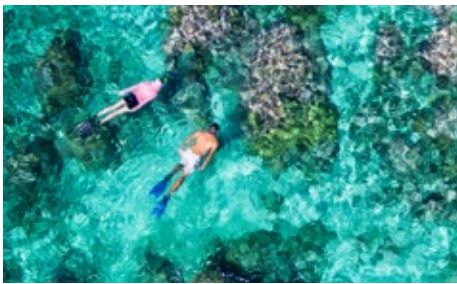
#### SUNDOWNERS ON THE BEACH\*\*

A cocktail or an ice cold beer can be enjoyed while watching the picturesque sunset above the waters.

#### FLATS LUNCH\*\*

A special treat offered by Alphonse Island is the amazing Flats Lunch. A dining atmosphere like no other. Guests get to revel in the sheer beauty of the flats whilst feasting on a delicious buffet accompanied by an ice cold beverage.





## DE-TACKLING DRINKS\*\*

Every Friday guests join the Alphonse guides and team at the Barnacle Bar for a social de-tackling gathering. While the guides de-tackle, guests enjoy drinks with fellow fishing / diver partners celebrating the week's achievements. Remember, every fish counts.

## KAYAK\*\*

Kayaks are a perfect and non-intrusive way to get up close to turtles and rays around the flats and allow guests to enjoy Alphonse from a new perspective. A guided tour by nature experts who will point out seabirds and spot fishermen's delights such as bonefish, permit and triggerfish.

For something more private and personal kayaks are readily available for guests use. This way guests get to appreciate the untouched exquisiteness of Alphonse Island solely at their own pace. A picnic basket can be organised for guests to carry along, enabling them to choose a spot for a secluded meal.

## REEF FLATS EXPEDITION\*\*

Travel the inside reef flats of Alphonse with a knowledgeable and insightful marine biologist. On this expedition guests get to appreciate the untouched view of the white sand and crystal clear waters whilst spotting juvenile turtles, eagle rays, eels and see all types of nature come together. Partake in an optional volunteer biodiversity survey and gather baseline data about all the species found deep in the sea grass meadows, under rocks and squeezed into crevices in the reef platform.

## SCUBA DIVING

Come face to face with daily encounters of stingrays, turtles, moray eels, barracuda, sharks, tuna, grouper, snapper, trevally and many more on the 30 dive sites suitable for any class of diver, from beginner to advanced.

- 5-Star PADI Dive Centre offering a variety of courses, including Specialty Scuba Courses.
- Obtain or upgrade your diving tickets, a full PADI [Open Water & Advanced] & Rescue Diver.
- PADI Discover Scuba Diving [DSD] [one-hour theory, a pool session and a shallow dive to 12 m].
- PADI Bubble Maker [suitable for children as young as eight years].
- PADI Divemaster.

## SNORKELLING\*\*

Non-divers may also experience the beautiful, enchanting marine life by partaking in guided snorkelling trips to three different locations: Alphonse Lagoon, Alphonse Outer Reefs or St Francois Island. Snorkelling equipment is complimentary and available for all guests' use. The abundant and colourful sea life sights are not to be missed.

## FREEDIVING

Our latest addition to the 2019 - 2020 season is freediving, the fastest growing sport on the water. Train with our PADI instructors and obtain your own freediving licence. From there you can get even more enjoyment out of your snorkels as you can see what's hidden beneath closer and more colourful than ever before.

## YOGA\*\*

Blue Safari invites you to join in scheduled yoga sessions where you can ease out the stresses of modern life and relax your body and mind. Take a moment to focus inwardly and reflect on the beauty of the tiny paradise that is your temporary home. Our yoga sessions are created to clear the mind and set your spirit free to enjoy your holiday to its fullest. Sessions in addition to the weekly schedule can be arranged subject to availability and surcharge.

## SPA THERAPIES

Relax in the quiet comfort of Azure Spa after a day of exhilarating experiences. Our qualified masseuses work magic on tired bodies in need of special attention or simply those just wanting to indulge. From head and shoulders to full body massages we are able to tailor treatments to the individual. Special packages such as the fishermen's massage concentrate on key sensitive points to ensure that you leave feeling pampered and rejuvenated. See following page for our Spa Menu.

## SUNSET LAGOON CRUISE

Set sail into the Alphonse Lagoon on one of our luxury boats to salute the setting sun with a cocktail or beer from the bar. Share stories from your week and bask in the stillness of the departing day.

## ST FRANCOIS NATURE HIKE

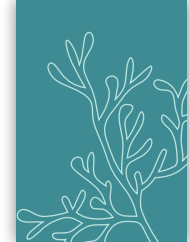
A nature walk on the uninhabited island of St Francois will guide guests through the mangroves where birds roost high in the tree tops and others wade across the vast white sand flats. The wildlife on this untouched island such as mangrove crabs and nursing baby sicklefin lemon sharks are amazing. Manta rays, pelagic fish and cetaceans are often viewed on the 40 minute crossing from Alphonse.



**BLUE SAFARI**  
*Signature Experiences*

We have compiled an exciting range of Signature Snorkelling Experiences that can be enjoyed on Alphonse Island. For further details on these please download them from below:

Blue Safari Snorkelling | Sailfish Snorkelling  
Manta Ray Snorkelling | Fish ID Snorkelling | Coral ID Snorkelling



# AZURE SPA

*A Luxurious Refuge where You can Relax, Rejuvenate and be Restored in Spectacular Surroundings...*

The spa is open daily from 09h00 to 19h00 where qualified spa therapists can perform a range of beauty treatments and massages.

***Treat yourself to some relaxation in the quiet comfort of the Azure Spa***



## TREATMENT MENU

### ALPHONSE ORGANIC / ALL NATURAL SIGNATURE TREATMENTS

*Return to nature with treatments using only raw vegetables and tropical fruits, the purest and most natural elements found on Alphonse Island.*

PLEASE NOTE: These treatments need to be pre-booked a day in advance to allow sufficient time for preparation.

#### ISLAND COCONUT SCRUB-WRAP

Carefully selected coconuts are hand picked from the island. They are sliced, finely grated and infused with a touch of vanilla essence / cinnamon, coconut water and oil. After the scrub, the body is tightly wrapped and left to naturally soak and absorb all these powerful ingredients. This treatment includes a scalp massage with essential oils. Perfect for any skin type, leaving the body hydrated with an amazing softness and glow.

#### SEA SAND SCRUB & ALOE VERA WRAP

Starting with a gentle scrub of the body using soft Alphonse sea sand and coconut oil. A chilled hydrating Aloe Vera gel is coated gently onto the body and then wrapped to moisturize and soothe dry or sunburnt skin. This treatment includes an Aloe Vera face mask, as well as a scalp massage to relieve any tension or stress.

#### ALOE VERA AFTER SUN CARE

Our Aloe Vera leaves are freshly cut from the Alphonse garden, peeled and prepared especially for those extra sunburnt areas. The cooling juice and pulp is applied and left to absorb its excellent healing properties into the skin.

#### ORGANIC FACIAL

An all-natural approach at taking care of the skin. Chemical and paraben free, this facial includes only the purest and most natural tropical fruits or vegetables which are applied to the skin leaving a soft, natural glow.

#### SEA SAND POULTICE MASSAGE

A treatment using only the softest, purest white sand found on the Alphonse beach, which is then wrapped in a soft cloth. It is heated, dipped in coconut oil and used to massage the entire body.

### PAMPERING MASSAGE

#### RELAXATION & DESTRESS MASSAGE

The goal of this massage is to relax the entire body. This is accomplished by rubbing the muscles with long gliding strokes in the direction of blood returning to the heart. This massage is ideal for a sense of well-being and serenity as it will help calm and balance the nervous system as well as lower anxiety and stress.

#### DEEP TISSUE – MUSCLE RELIEF MASSAGE

A stimulating massage aimed at the deeper tissue structures of the muscles to relieve muscle tension. The powerful anti-inflammatory properties of the essential oils will help boost the nervous system and alleviate inflammatory pain.

#### HOT STONE MASSAGE

A great, warming and penetrating massage using soothing oils, warm Basalt stones and sometimes cold stones at your preference to help soothe and relax muscles.

#### FOUR HANDED MASSAGE

A beautiful gift to give your body and soul. Two therapists working together in unison using consistent pressure whilst applying long strokes and gentle stretching over your entire body.

#### HEAD MASSAGE

Using different techniques to help relieve tension or headaches by stimulating the nerves and blood circulation to the scalp.

#### FOOT MASSAGE

Using the combination of gliding and reflex point movements, this is the perfect massage to relieve stiffness, puffiness or tired feet. It will help stimulate blood circulation whilst improving energy flow throughout the body, perfect after long journeys.



## BODY SCRUBS

*Exfoliating Treatments to regenerate and oxygenate the skin. The full body scrub is followed by a shower and finished with a moisturising oil application leaving skin smooth and hydrated.*

### REVITALIZING COFFEE SCRUB

The combination of fresh coffee, coconut oil and a dash of vanilla essence is the perfect scrub to boost the circulatory and lymphatic system. It will leave skin feeling fresh and nourished.

### GOLDEN SUGAR SCRUB – Please advise if there are nut allergies

An invigorating exfoliation using golden brown sugar, coconut oil and nutmeg powder. A nourishing delight which will prepare the skin for sun exposure, leaving it soft and smooth.

## FACIALS

**RELAXER TREATMENT** – for dry or sensitive skin

**PURIFYING DETOX FACIAL** – for uneven or unbalanced skin

**GENTELMAN'S FACIAL** – for all skin types

**MINI FACIAL** – a simple deep cleanse, no massage included

## HANDS & FEET

### ISLANDER MANICURE / PEDICURE

A pampering treatment which includes cutting, shaping, and painting of nails, removal of cuticles, and softening of skin. The 60 minute manicure/pedicure includes an exfoliation and massage.

French Supplement

Soak Off

## HAIR CARE

*Pamper yourself by improving any conditions such as dull, dry or damaged hair. With the use of natural ingredients, these hair masks will not only help reduce the effects of dirt, sun and pollution, but also leave your hair feeling soft and lustrous. The antioxidant effects of coconut oil from its saturated fats is an excellent boost for hair growth. Choose from any combination for an effective and nourishing treatment for your hair.*

- Egg Yolk, Coconut Oil & Aloe Vera (for hydrating and stimulate growth of hair)
- Banana, Raw Honey & Coconut Oil (prevents breakage and split ends)
- Yogurt, Egg Yolk, Raw Honey & Coconut Oil (for dry and frizzy hair)
- Aloe Vera, Coconut Oil & Raw Honey (promotes shine)

## WAX AWAY

Lip / Chin	Bikini Line	Full Leg & Bikini	Underarm
Eyebrow Shape	Brazilian	Full Leg	Chest
Eyebrow Clean	Hollywood	Half Leg	Back

## TINTING

Eyebrow Tint	Eyelash Tint
--------------	--------------

## ISLAND YOGA

*Start or end your day feeling invigorated and thoroughly relaxed with our variety of yoga sessions. All sessions are comprised of breathing, meditative and stretching postures aimed at improving your mobility and bringing a sense of clarity to mind, body and soul.*

WE OFFER 5 TYPES OF YOGA:

Vinyasa | Ashtanga | Yin Yoga | Restorative Yoga | Sun Salutation



# CONSERVATION

*Research, Rehabilitation and Protection*



Conservation is something held very close to the hearts of everyone on Alphonse Island. Alphonse is committed to protecting the unique fauna and flora of the area with ongoing research, rehabilitation and monitoring programs, focusing especially on nesting sea turtles, giant tortoises, sensitive marine habitats and forest rehabilitation. This dedication to conservation has at all times been at the centre of the mission to create an exclusive island that is intimately connected to the natural environment.

Established in 2007, the Island Conservation Society Centre has ensured the key aspects of the eco-system are well maintained and cared for. The Island Conservation Society [ICS] team offers activities upon the island such as Turtle Patrol, Giant Tortoise viewing and feeding and bird-watching which guests are encouraged to join. Without their sound knowledge, the ecosystem on the atoll would not be how it is today.

Alphonse Island provides support through its membership on the board of the Alphonse Conservation Foundation and hotel guests contribute essential funding to the activities of ICS through the payment of a conservation donation. ICS provides a weekly presentation which provides progress updates and discussion of environmental topics. Books, souvenirs and T-shirts can be purchased from the ICS office or the Alphonse Boutique, with the proceeds providing further financial support to the conservation efforts.

Committed to the protection of the environment, Alphonse Island is the very first island in the Seychelles to become reliant on solar power and go completely 'off the grid'. By using solar power as a renewable energy source, Alphonse Island will be eliminating the use of 268 000 litres of diesel usage per annum and will be reducing the island's emissions by 718.24 tonnes per annum.





# GETTING THERE

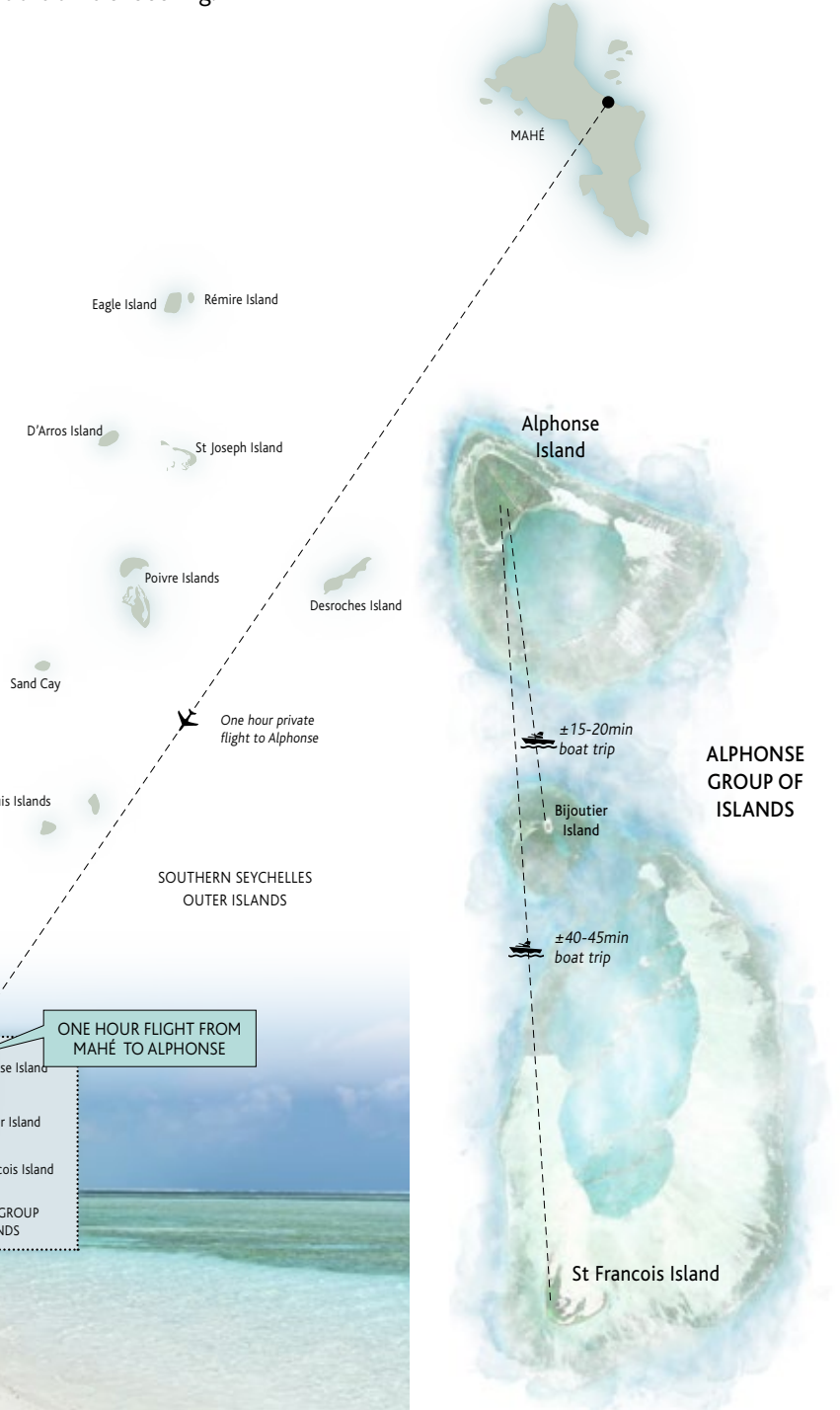
## *Just a Flight Away*

One of the attractions to Europeans, Africans and especially Middle Easterners is that the Seychelles is located in a similar time zone to these areas. It is only four and a half hours by plane from Dubai, Abu Dhabi, and Doha which all serve as a connecting hub for regular international flights from Europe, the United States, Africa and Asia. Additionally, direct flights to the Seychelles are available from Paris, Bombay, Nairobi, Antananarivo, Mauritius, Johannesburg, Addis Ababa, Reunion, Colombo, Dar-Es-Salaam and Frankfurt.

Alphonse Island is an hour flight from Mahé, the main island of the Seychelles. There are bi-weekly flights that fly between Mahé and Alphonse each Saturday and selected Wednesdays. Guests are required to fly into Mahé at least four hours before the flight is scheduled to depart.

Alphonse Island is also accessible through private charter flights. The Alphonse Island reservations team will assist with all return flight reservations and flight timings between Mahé and Alphonse at the time of booking.

### INTERNATIONAL FLIGHTS DIRECT FLIGHTS TO/FROM SEYCHELLES



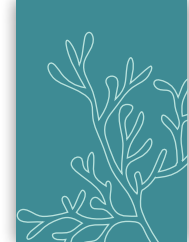
ONE HOUR FLIGHT FROM MAHÉ TO ALPHONSE

Alphonse Island

Bijoutier Island

St Francois Island

ALPHONSE GROUP OF ISLANDS



# THE FINER DETAILS

## INCLUSIONS & EXCLUSIONS

### RATES INCLUDE

- Three meals daily
- Charter flights to and from Alphonse
- Room amenities, non-motorised and land based activities
- Soft drinks during activities
- Complimentary scheduled communal excursions
- Snorkelling equipment [Loss of gear will be charged per item]
- Watersports equipment [Stand up paddle boards, kayaks]
- Water, tea and coffee
- Fly fishing rod and reel rental
- Public Wi-Fi
- VAT

### RATES EXCLUDE

- Conservation donations
- Beverages
- Motorised activities
- Additional excursions
- Laundry and items of a personal nature
- International flights, Mahé accommodation and ground transfers
- Gratuities
- Telephone charges
- Spa treatments
- Boutique and shop purchases
- Babysitting / Child-minding

## GENERAL INFORMATION

### ACCIDENT MEDEVAC INSURANCE

All guests are required to obtain "From Scene of Accident Medevac Insurance". Details must be submitted prior to arrival on the Island.

### DAYLIGHT HOURS

Due to its proximity to the equator, there is no real twilight in the Seychelles. The sun rises quickly at around 06h15 and sets with equal swiftness at about 18h30.

This varies by only minutes throughout the year, giving nearly a full 12 hours of daylight for 365 days a year.

### DUTY FREE ALLOWANCE

- 200 cigarettes or 50 cigars.
- One litre of spirits and two litres of wine.

### CELLULAR / MOBILE PHONES / INTERNET

- No mobile signal / connectivity on the island.
- Each Bungalow or Chalet has a landline phone service, operated via satellite.
- There is free Wi-Fi in the bar and lounge area.

### CHILDREN

- Children of all ages are welcome.
- Children one to 23 months stay complimentary.
- Fun and educational activities for children in a stimulating environment.
- Special menus with nourishing and appropriate options for developing palates.
- Child minders are available [additional charge].

### ELECTRICITY

To conserve the environment Alphonse Island is 'off the grid', and completely reliant on solar power. Through solar power the Island has 24-hour electrical current [240 volt, 50 cycles AC] with British plug points. A European electrical current adapter [3-point, square-pin] is necessary.

### ALPHONSE LEISURE SEASON

Alphonse Island is open year round with the fishing season running from early September to mid May.

### FLIGHTS – LUGGAGE

On inter-island charter flights check-in luggage is strictly limited to 15 kg [33 pounds] per person, and 5 kg [11 pounds] carry-on luggage.

It is not possible to load extra luggage beyond your limit; it would have to be repacked and left on Mahé until your return. On request, the Alphonse Team in Mahé will assist you with the storage of excess luggage while you are on Alphonse Island. We also suggest you use lighter soft-shell bags.

### GRATUITIES

Tipping is never mandatory. Should you wish to show appreciation to the staff – the below amounts are a guideline [based on average tips given].

**General Hotel Team:** ± USD250 per person per week or USD35 per day. To be left at reception upon departure for equal distribution.

**Diving Team:** ±USD20 per dive per person for the diving team, which is given to the respective manager at the end of the week and will be divided up by the dive team and skippers.

**Activity Centre Team:** ±USD20 per day for the activity team if you have joined any activities, which can be left at reception upon departure for equal distribution.

**Fishing Guides:** ±USD110 per day or USD650 per week.

### INDEMNITIES

All guests are required to sign an indemnity form once on location. Divers booked on courses must complete the Medical Statement prior to diving, this is provided prior to arrival in case a medical clearance is needed from your physician for diving.

### PAYABLE SERVICES AT MAHÉ INTERNATIONAL AIRPORT

- Air Seychelles VIP Services – Fast-tracking through airport and special convenience services.
- Salon de Vallée de Mai Departure Lounge – for the comfort convenience of clients awaiting air connections upon departure. This service is complimentary to business class travellers.
- Meals in Mahé will be for your own expense.
- Accommodation, Transfers and Tours in Mahé are an additional cost which can be arranged independently or by Alphonse Island.

### CONSERVATION DONATIONS

There is a conservation donation of USD175 per week [USD25 per day]. This will be included on your confirmation invoice and is settled prior to arrival. All packages exclude this conservation donation which is given to the Island Conservation Society for the preservation of nature in the Seychelles.

### MALARIA

The Seychelles and Alphonse Island are Malaria Free area's.

### MEDICAL CARE

A qualified medical person [nurse] is on call to deal with any emergencies.

### PASSPORTS & VISAS

No visa is required for a holiday.

### SAFETY

There are no cyclones, busy roads or dangerous animals and the ocean around the island is tranquil and calm.

### TIME ZONE

GMT +4 hours. [+3 Hours during Northern Hemisphere Summer].





### SUN PROTECTION

Due to the close proximity to the equator, the sun in the Seychelles is exceptionally strong, with the white sand increasing its effect. It is not advisable to lie in direct sunlight during the first few days of your vacation.

A strong sunbathing lotion or sun block is recommended, as is wearing a hat, protecting your head from direct sunlight. For water sports, [such as snorkelling], a T-shirt [rash vest] is recommended.

### TRAVEL INSURANCE

It is vital that all guests booking a stay on Alphonse Island have a comprehensive travel insurance policy. Alphonse Island is not liable for any miss connecting flights, for any reason, including weather related delays.

Guests planning to dive will be asked to provide their travel insurance details as proof of cover for diving activities.

This is often included in general travel insurance policies but should you wish to dive deep, please check any depth restrictions.

### VACCINATIONS & INOCULATIONS

None required for entry. However, you may want to check with your local immunization and inoculation clinic for their recommendations on health precautions for travel to the Seychelles.

### WATER

There is a desalination plant on Alphonse Island and water from the faucet is safe to drink. Mineral water is only stocked when specifically requested prior to arrival.



## BLUE SAFARI *Offers & Packages*

We have compiled an exciting range of Alphonse Packages. For further details on these please download them from below:

ALPHONSE STAY PAY OFFER

FAMILY PACKAGE

TRIBE PACKAGE

WEDDING PACKAGE

HONEYMOON PACKAGE

COUPLES MILESTONE PACKAGE



## PAYMENT & BOOKING INFORMATION

### CREDIT CARD EXCHANGE

The following credit cards are accepted:

- MasterCard • Visa

American Express is not accepted.

### CURRENCIES ACCEPTED

- Seychelles Rupee • US\$ • Euro • GBP

### CANCELLATIONS

- A 10% fee shall be levied if the reservation is moved to an alternative date within the same season.
- A fee of 10% shall be levied if cancellation is more than 180 days prior to arrival.
- A fee of 50% shall be levied if cancellation is between 180 and 90 days prior to arrival.
- A fee of 100% shall be levied if cancellation is 90 days or less prior to arrival.
- All cancellations and provisional bookings must be confirmed in writing.

### PAYMENTS

- Reservations will be held for two weeks.
- A deposit of 50% of the total package charge is required to confirm your booking and the balance is payable in full three months prior to arrival.
- All extras will be settled at the hotel on departure.

### TARIFFS ARE QUOTED

- Inclusive of VAT in US Dollars
- Subject to availability

### TARIFF CHANGES

All tariffs are subject to change, without prior notice, however rates quoted for confirmed bookings will be honoured.

### VAT [a Government tax]

A Government Tax [VAT] of 15% is applicable on all items payable.



Alphonse Island is part of the Blue Safari Seychelles Collection

## CONTACT DETAILS

### ISLAND

Telephone +248 422 97 00

+248 422 90 30

E-mail info@bluesafari.com

### RESERVATIONS

E-mail reservations@bluesafari.com

### MARKETING

E-mail marketing@bluesafari.com

Postal Blue Safari Seychelles

Address P O Box 378, Victoria, Mahé  
Republic of Seychelles

Website www.bluesafari.com

