



# MAKANYI

PRIVATE GAME LODGE

TIMBAVATI GAME RESERVE | GREATER KRUGER NATIONAL PARK | SOUTH AFRICA

2025



[WWW.MAKANYILODGE.COM](http://WWW.MAKANYILODGE.COM)

# LOCATION

## GREATER KRUGER NATIONAL PARK - TIMBAVATI PRIVATE NATURE RESERVE

S24° 21' 00.5" | E31° 09' 26.2"

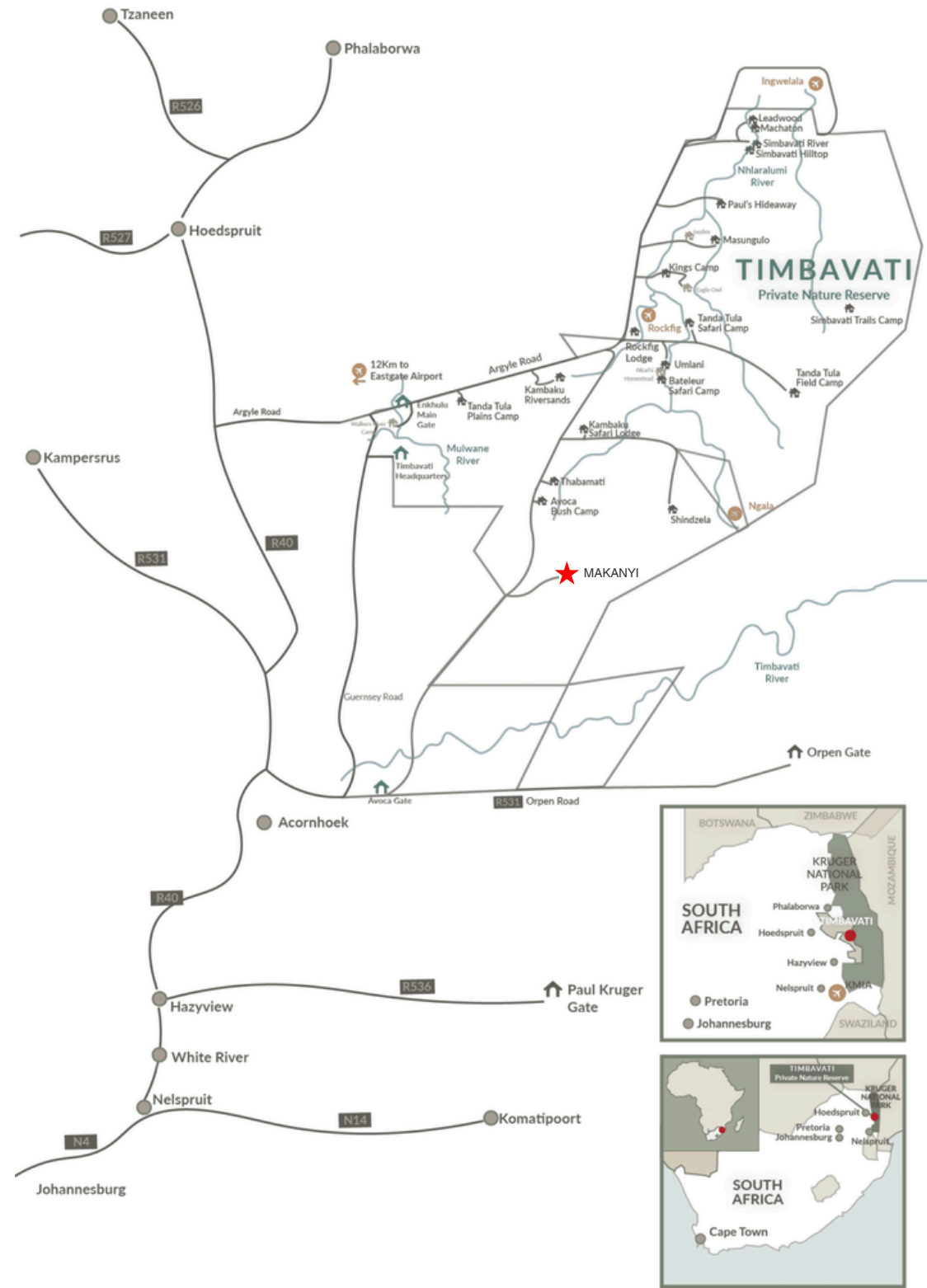


Makanyi Lodge is 63km from Hoedspruit Eastgate, our closest commercial airport. The journey to the lodge is roughly 1.5 hours by car and the majority is through the big 5 Timbavati Private Nature Reserve where the guests safari experience will commence.

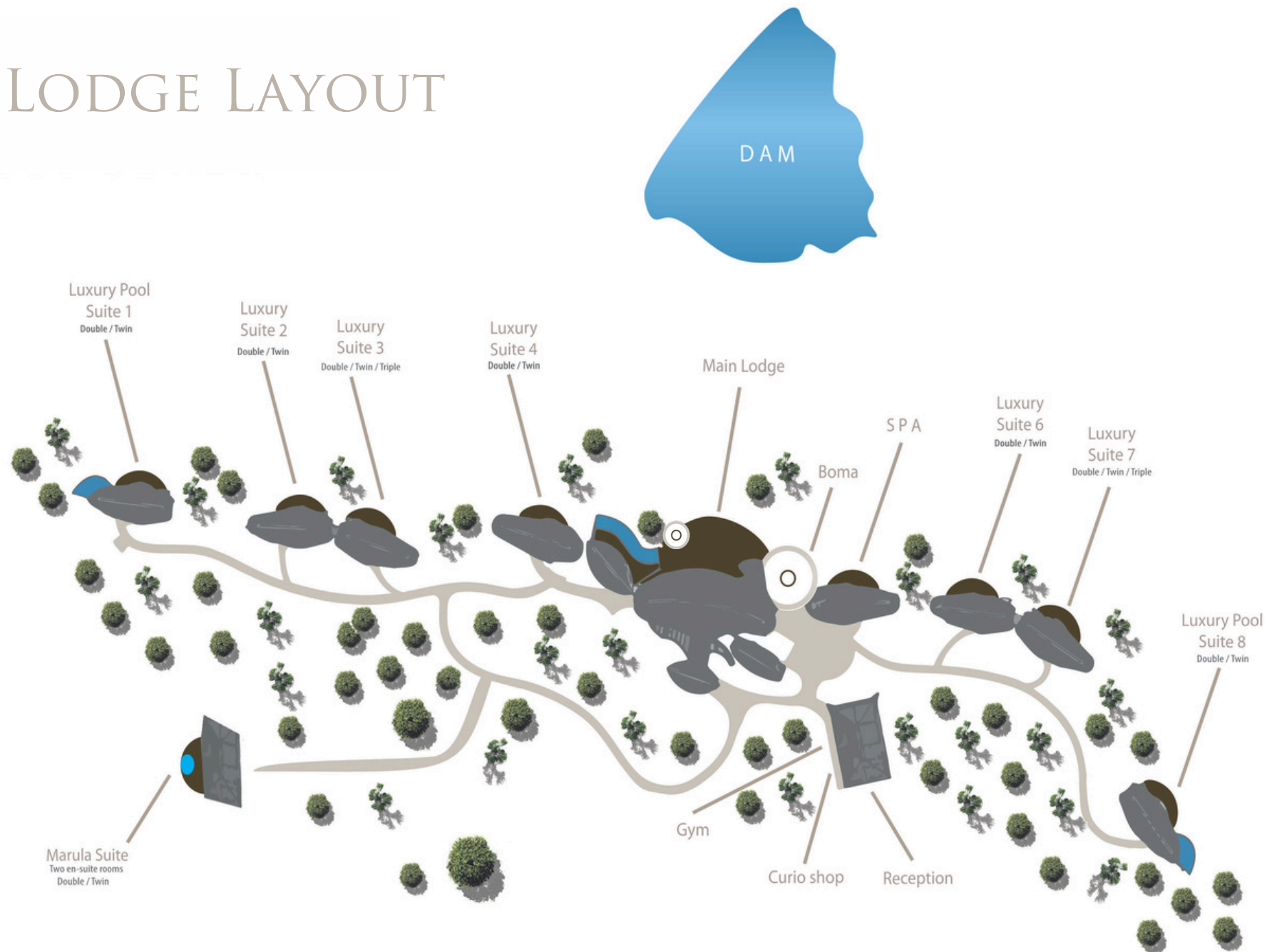
AirLink and Cemair operate scheduled flight's to and from Hoedspruit from Johannesburg and Cape Town daily & FedAir operate scheduled and private flights directly to Makanyi.

Driving from Johannesburg will take approximately 7 hours.

*\*Kindly note that if you use a GPS the correct coordinates (above) are for the Timbavati Private Nature Reserve control gate (Enkhulu Gate). Once inside the reserve please follow signs to Makanyi Lodge. We do not advise using Google Maps, Waze and any other Navigation apps as this directs you on roads not accessible into the Reserve or to the lodge. Please contact the lodge for directions.*



# LODGE LAYOUT







# WHY MAKANYI?

## **TIP 1**

Our location in the south of the Timbavati Private Nature Reserve means that we benefit from a low density of vehicles, ensuring an exclusive and authentic safari experience with no time limit in animal sightings

## **TIP 2**

We keep things discreet! Makanyi has a limit of just three game drive vehicles, which with an area of 8000 hectares to cover means you'll feel like you're truly in the wilderness!

## **TIP 3**

The lodge prides itself on its homely atmosphere with welcoming staff, superb cuisine and the utmost attention to detail. (Perhaps why we've been voted the #1 resort in South Africa and #2 best resort in the world by the prestigious Nast Traveler Readers' Choice Awards 2024, both in the USA and in the U.K.)





# QUICK FACTS

## LOCATION / RESERVE / RATES:

- 1.5 hours from Hoedspruit Eastgate Airport
- +7 hours from Johannesburg by vehicle
- Timbavati conservation levy applicable to all guests
- Timbavati gate levy (only applicable to self-drive guests)

## ACTIVITIES:

- Morning and afternoon safari - Max 6 guests per vehicle
- Walking safari - *winter only*
- Star gazing

## FOOD / BEVERAGES:

- All meals are a' la carte
- Boma night is buffet
- We offer breakfast, lunch, high tea and dinner
- All drinks are included (excluding special order wines, champagnes, and liqueurs)

## AREA ACTIVITIES:

- Moholoholo
- Zip Line
- Hazyview Blyde
- River Canyon
- Helicopter Tours
- Hot Air Ballooning
- Shick Shack Tours

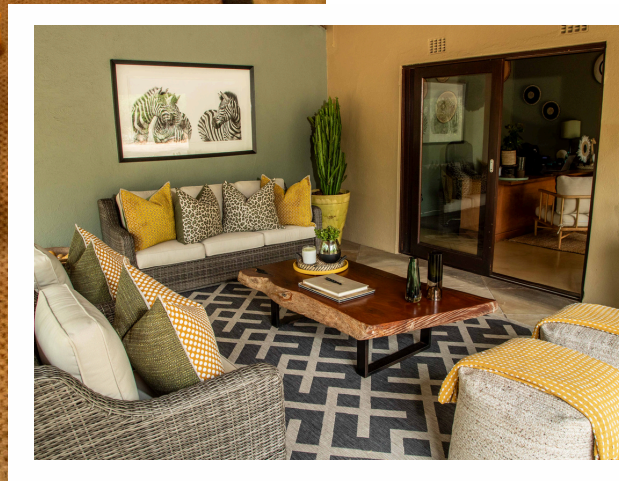
## LODGE INFO:

- 5 luxury suites
- 2 luxury pool suites
- 1 2-bedroom Marula suite
- Lounge area
- Bar area
- Indoor dining room area
- Outdoor dining area
- Outdoor thatched dining area (lapa)
- Outside deck overlooking an active water hole
- Fire pit
- Boma
- Swimming pool
- Spa room
- Gym
- Curio Shop
- Minimum age is 12 (unless the lodge is booked exclusively)



# LODGE FACILITIES

- Lounge area
- Bar area
- Indoor dining room area
- Outdoor dining area
- Outdoor thatched dining area
- Outside deck overlooking an active water hole
- Swimming pool
- Spa room
- Well equipped gym
- Wi-Fi throughout the lodge
- Traditional boma area
- Fire pit
- Curio shop









# ACCOMMODATION

## 2 LUXURY POOL SUITES & 5 LUXURY SUITES

- 2 luxury pool suites (dbl / twin)
- 5 luxury suites (dbl / twin)
- En-suite bathrooms
- Double basins
- Indoor and outdoor shower
- Private deck with views of the dam
- Fully stocked mini bar
- Complimentary Wi-Fi
- Hair dryer
- Nespresso coffee machine Telephone
- Fireplace
- Air-conditioning & heating
- Spacious lounge
- Mosquito nets
- Premium amenities
- Each suite is 140sqm (1,500sqft)







# ACCOMMODATION

## 2-BEDROOM MARULA SUITE

- 2 king size suites (dbl / twin)
- 2 en-suite bathrooms
- Double basins
- Indoor showers
- Spacious baths
- Main sitting area with satellite TV
- Fully stocked mini bar
- Complimentary Wi-Fi
- Hair dryers
- Nespresso coffee machine
- Telephone
- Air conditioning in each room
- Fire place (gas)
- Private outside deck
- Private pool
- Outside loungers
- Outside sitting area
- The Marula suite is 366sqm (3,940sqft)





# SPA AND GYM

## SPA

- Body treatments
- Facials
- Scalp & Leg Rituals
- Skin adoration wraps

## GYM

- Fully air-conditioned
- Weights
- Dumbbell set
- Bench press
- Stationary bicycle
- Gym ball
- Medicine ball
- Weight machines
- Yoga mats
- Fresh towels
- Bottled water
- Bluetooth speaker





# GAME DRIVES

- Two thrilling game drives per day
- Custom built 6 seater Land Rovers
- Guide and tracker team
- Morning coffee and afternoon sunset stops with snacks +-3 hour duration per drive
- Center console with binoculars, suntan lotion & insect repellent spray

# WALKING SAFARIS

- Educational walk
- Conducted in winter months only
- Subject to guide approval and discretion
- Max 6 guests per walk
- Conducted by qualified guides with walking trails
- Minimum age 16, Maximum age 65 - guests must be medically fit





# PRIVATE VEHICLE & PROFESSIONAL WILDLIFE PHOTOGRAPHER / TUTOR

The private vehicle needs to be booked for the duration of the guests' stay

The daily rate for the tutor is on request, which will be added to the private vehicle rate

## PHOTOGRAPHIC SAFARI

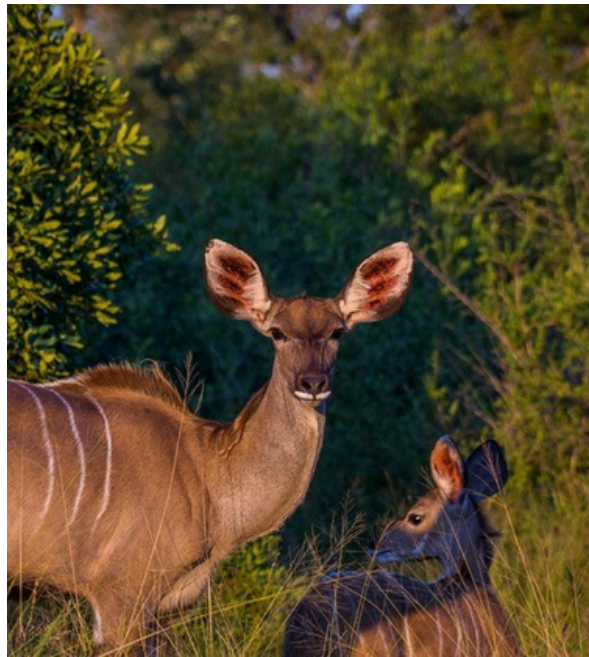
It includes a private vehicle, professional wildlife photographer / tutor, guide, and tracker.

And consists of one-to-one training or group (max 4 people) and two daily game drives for a minimum of 3 hours each per morning and afternoon. Private photographic safaris are booked through Makanyi and designed for guests' who are looking for the full attention of the professional wildlife photographer / tutor to maximize their learning and photographic skills in the number of days that have been allocated.

This is open to and suitable for all levels of photographers, be it first time users or more advanced. Camera equipment is not included; this can be rented through Africa Photographic Services in Nelspruit.

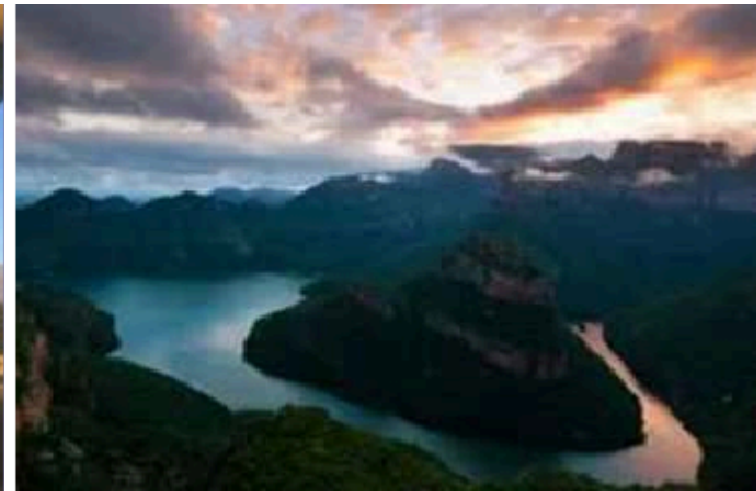








# AREA ACTIVITIES



By prior arrangement and subject to availability. Additional charges apply. Transfer costs are not included and will be charged for separately.

## Moholoholo

This wildlife rehabilitation centre is closely involved in the conservation of endangered species and the rehabilitation of injured and poisoned animals.

## Zip Line Hazyview

An aerial cable trail over the Sabie River valley, this is an exciting adventure over beautiful scenery.

## Blyde River Canyon

Famous throughout South Africa, this incredible, natural geological feature is 25 km long and about 750m deep, making it the third largest canyon in the world. The view is absolutely breathtaking.

## Helicopter Tours

The best way to see this spectacular region is from the air, so board a chopper and prepare to be stunned by the splendour and beauty of the scenery below you.

## Hot air ballooning

A ride in a hot air balloon gives you the opportunity to absorb the area in a beautifully unique way, with that extra element of adventure.

## Nourish

Shik Shack Tours offers you a unique experience. The tours include the opportunity to visit a local crèche, taste some traditional food and beer and even have your future read by a local Sangoma (traditional healer).

# WEDDINGS & VOW RENEWALS

Set amid the unspoiled African bushveld, is the perfect place for a memorable and romantic South African wedding or vow renewal. Be it an intimate ceremony for the bride and groom alone or a celebration with friends and family, we are more than happy to assist with the arrangements to make unforgettable memories for the happy couple.



## HONEYMOON SAFARI

In this intimate setting, newly weds are invited to relax, unwind and connect in the African bush, this will be one of the most memorable experiences you will share as you start your new life together.

FOR MORE INFORMATION AND PRICING PLEASE EMAIL [RESERVATIONS@MAKANYILODGE.COM](mailto:RESERVATIONS@MAKANYILODGE.COM)

# TERMS & CONDITIONS

## RATES ARE QUOTED

- Rates are quoted in South African Rand and are per person, per night based on two sharing a suite.
- Rates are subject to change.
- Rates are quoted in Rand (ZAR) and are inclusive of 15% VAT

## RATES INCLUDE

- All meals and beverages offered at Makanyi
- Two daily game drives
- Other daily activities taking place in the lodge area: bush walks, star gazing (seasonal)
- Use of the gym
- Laundry service

## RATES EXCLUDE

- Special order wines, champagnes, and liqueurs
- Any area activity that is not offered directly by Makanyi
- Transfers to and from commercial airports
- Specialist photographic safaris
- Private game drive vehicle
- Spa treatments
- Telephone calls, purchases from the curio shop & any gratuities
- Road Transfers to and from Thabamati airstrip
- Timbavati Conservation Levy - per person per night payable in advance on invoice.
- Timbavati Gate Levy per vehicle - per entry is applicable for any self-drive guests & road transfer companies

\*Please note levies are subject to change in accordance with the Timbavati regulations

## EXCLUSIVE USE & SPECIALS

On request

## SINGLE SUPPLEMENT RATE

- A 50% supplement will apply per single use on the per person sharing rate
- The Marula Suite will attract a 100% surcharge when sold for single occupancy

## THIRD PERSON SHARING RATE

- A Third person between the age of 12 - 18 years sharing in a Luxury Suite will pay 50% of the per person per night sharing rate (proof of age required when booking).
- Not available in a Luxury Pool Suite.
- A third and fourth adult in the Marula Suite will pay the nightly per person rate.

## CHECK IN / OUT TIMES

Check in time is from 2 pm and check out is at 11 am. However, subject to availability, we are happy to accommodate for an earlier check in or a later check out time.

## CHILD POLICY

We regret we do not allow children under the age of 12, unless you have exclusive use of the Lodge.

## PAYMENT OPTIONS

Payments can be made via EFT or our online payment link which a 5% surcharge will apply.



# TERMS & CONDITIONS

## BOOKINGS & CANCELLATIONS

**YEAR ROUND** excluding 20 December – 04 January

### Payment Terms

- All initial requests can be held provisionally for 2 weeks, after which time they will be released back into the inventory for re-sale if not confirmed
- Bookings will not be confirmed without arrival/departure details
- Final Balance for all charges is due 60 days prior to guest's arrival

**FESTIVE SEASON** 20 December – 04 January

### Payment Terms

- All initial requests can be held provisionally for 2 weeks, after which time they will be released back into the inventory for re-sale if not confirmed
- We require a non-refundable 20% deposit at the time of booking. Bookings will not be confirmed without a deposit
- Final invoice balance for all charges is due 60 days prior to arrival

### EXCLUSIVE USE & GROUPS

Any booking with 3 or more suites is treated as a Group by Makanyi and will have different payment and cancellation terms as listed below. The same applies for an Exclusive Use (EU) takeover of the property and will adhere to these conditions. If an Exclusive Use downsizes and no longer wishes to pay the EU rate, then the group terms will be applicable to any cancelled rooms. The EU/Group T&Cs will also apply for bookings that fall within our Festive Season date range. All groups are on a request basis.

### Payment Terms

- All initial requests can be held provisionally for 2 weeks, after which time they will be released back into the inventory for re-sale if not confirmed
- We require a non-refundable 20% deposit at the time of booking. Bookings will not be confirmed without a deposit
- 5 months prior to arrival a further 30% is due
- 3 months prior to arrival the remaining 50% is due

**YEAR ROUND** excluding 20 December – 04 January

### Cancellation Policy

- Over 60 days from arrival - No penalty
- Within 60 days of arrival - 50% cancellation fee
- Within 30 days of arrival - 75% cancellation fee
- Within 14 days of arrival - 100% cancellation fee
- Excluding the Timbavati Private Nature Reserve conservation levy, which is fully refundable

**YEAR ROUND** 20 December – 04 January

### Cancellation Policy

- Over 60 days of arrival - Loss of deposit
- Within 60 days of arrival - 50% penalty
- Within 30 days of arrival - 75% penalty
- Within 14 days of arrival - 100% penalty
- Excluding the Timbavati Private Nature Reserve conservation levy, which is fully refundable

### EXCLUSIVE USE & GROUPS

#### Cancellation Policy

- Before 5 months - loss of deposit 20%
- Within 5 months - 40% penalty
- Within 3 months - 75% penalty
- Within 2 months - 100% penalty
- Excluding the Timbavati Private Nature Reserve conservation levy, which is fully refundable

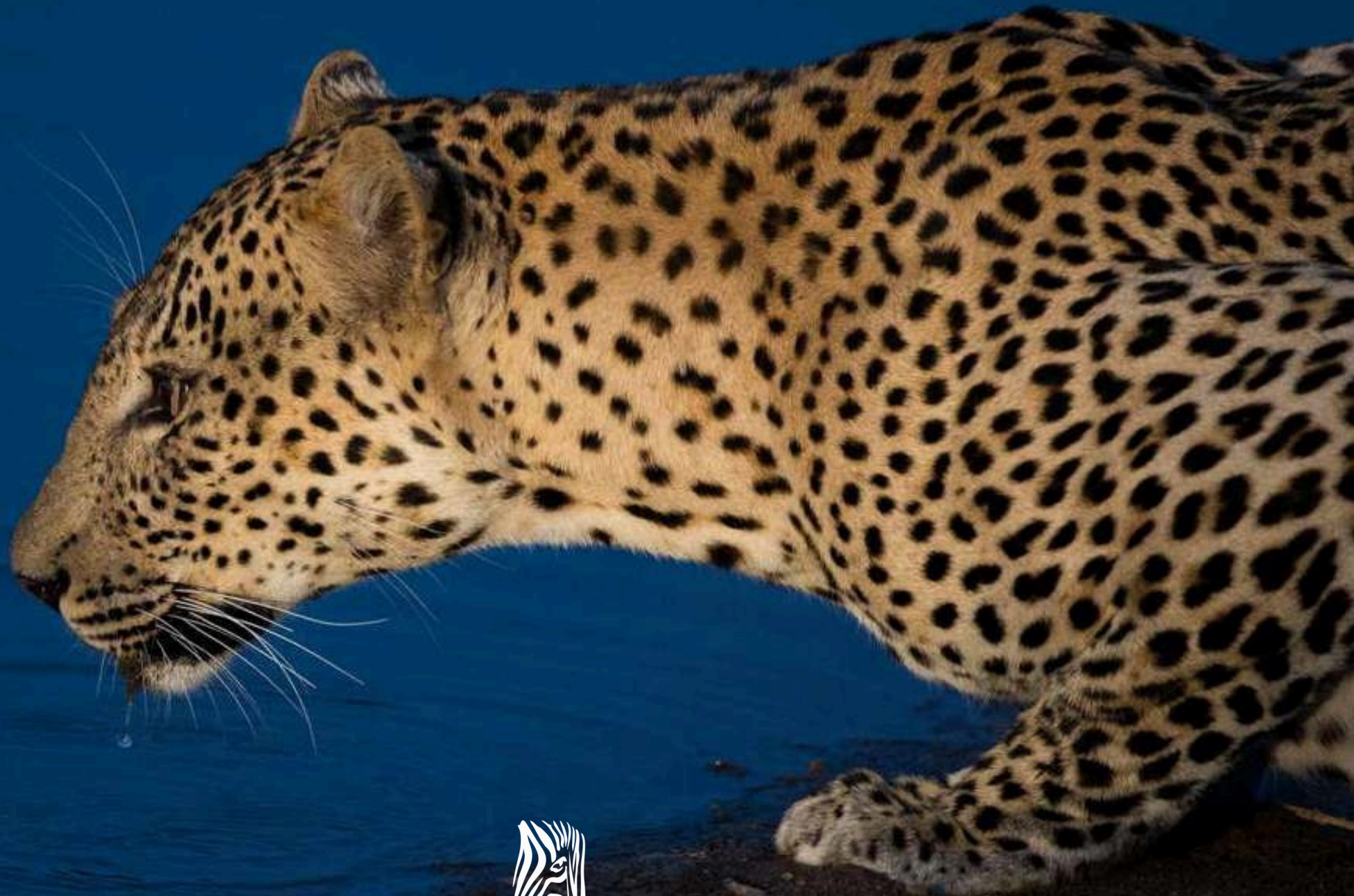
### NO SHOW & EARLY DEPARTURE

- **Clients who do not show will be charged for the entire length of stay**
- **Clients who depart prior to confirmed departure date are not entitled to any refund**

**ALL CANCELLATIONS MUST BE RECEIVED IN WRITING**



"THE PLACE WHERE SOMETHING SACRED CAME DOWN TO EARTH"



MAKANYI  
PRIVATE GAME LODGE