

TITILAKA

LAGO TITICACA / PERU

THE LODGE

Titilaka, a remote Experience Lodge on the shores of Lake Titicaca, will immerse you in the intriguing allure of Lake Titicaca where sky, earth, and water connect.

Surrounded by stunning scenery and pristine geography, Titilaka's contemporary design and comfort integrates with the natural environment. Its architectural concept is closely linked to a special place positioned starkly between water, mountains and sky. The Lodge is not only a welcoming lodge full of contemporary comforts and caring services, but a place designed to integrate with the environment and pay homage to the cultures of Lake Titicaca.

Surrender to your senses in a secluded experience lodge on a private peninsula. Go beyond the ethereal landscapes, traditional communities and ancient ways. An enigmatic sense of peaceful solitude at nearly 4000 meters above sea level

The three-storey lodge offers 18 lake-view facing Taquile and Amantani islands to the north; the Bolivian Cordillera Real to the East and Lake Titicaca stretching from East to West. At the northern tip of the peninsula lies the dock, departure point for both local and our excursion boats.

Titilaka keeps a low carbon footprint. The Lodge uses hydroelectric power and natural gas, sources local produce and employs mostly local workers. Interpreters are focused on promoting conservation practices, accentuating local traditions, customs and culture. The Lodge actively participates with the local community in various developmental, educational, conservation and social projects. Guests can visit these projects during one of their excursions.

TITILAKA

LAGO TITICACA / PERÚ

LOCATION

Although visitors often compare the setting with the Scottish Highlands or Patagonia, Titilaka is strategically located in a rural community south of Puno (the main city on the Peruvian side of the lake) and surrounded by small hamlets of Quechua and Aymara cultures.

Lake Titicaca is the world's highest navigable lake at 12,500 feet (3,810 m) above sea level and covers some 3,200 square miles (8,300 km²). It has a depth of 107 meters and is 50 miles (80 km) wide.

Titilaka can be reached by car (30 minutes) from the Puno Train Station or 90 minutes by road from the nearest airport (Juliaca - JUL).



TITILAKA

LAGO TITICACA / PERÚ



Departmental Capital

District Capital

Provincial Capital

Protected Area

Paved Road

Unpaved Road

Railroad Line

AIRPORT

PORT

TRAIN

ATTRACTIONS

ARCHAEOLOGICAL SITE

ASTRONOMY

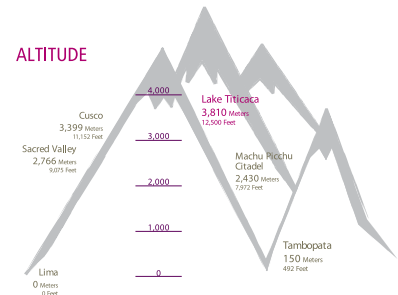
BICYCLE

BIRDS

BOAT

LOCAL COMMUNITY

PHOTOS



WEATHER

JAN	FEB	MAR	APR	MAY	JUN
17°/4°C 62°/40°F	17°/4°C 62°/40°F	17°/4°C 62°/40°F	17°/2°C 63°/35°F	18°/-3°C 64°/27°F	16°/-6°C 62°/22°F
JUL	AUG	SEP	OCT	NOV	DEC
16°/-6°C 62°/21°F	17°/-4°C 62°/25°F	18°/-1°C 64°/31°F	18°/2°C 65°/36°F	19°/3°C 66°/38°F	18°/4°C 65°/39°F

ACCESS AND TRAVEL TIMES

Travel Times to Puno:

- From Cusco: 30-minute flight (two flights per day), 6 hours by car/bus or 10 hours by train (the Andean Explorer)
- From Lima: 90-minute flight (four flights per day)
- From Arequipa: 30-minute flight (two flights per day) or 6 hours by car/bus
- From the Bolivian Border: 2 hours by car/bus

Distances to Titilaka:

- From Juliaca Airport: 47 miles (76 km) in 90 minutes
- From Puno Train or Bus Station: 22 miles (36 km) in 40 minutes
- From the Bolivian Border: 78 miles (126 km) in 60 minutes

TITILAKA

LAGO TITICACA / PERÚ

FACILITIES

The Lodge is designed as an experience hub to facilitate exploration and maximize exposure to the lake, nature and local life style. All services and facilities were designed accordingly.

- Private peninsula with 4 acres of lands and two private beaches
- 18 fully-equipped lake-view rooms
- Outdoor wrap-around terrace, an overwater deck and boardwalks
- Reception, sitting areas, 3 lounges, main dining room and fully stocked bar with large regional wine cellar
- Fully equipped media and reading room with satellite TV, books, games and DVD's
- Small jetty or landing dock
- Massage therapy room
- Boutique, located near the lobby, offers an eclectic collection of merchandise

FIRST FLOOR



INCLUDED SERVICES

- Excursions led by our bilingual local expert guides
Guests can choose between 14 excursions in Peru and 2 into Bolivia (additional cost) to explore both the lake and its surroundings. Our unique experiences give guests the opportunity to learn about the region's distinctive gastronomy, nature, history and culture. All of these activities can be enjoyed in private or on a shared basis.
- Fully-equipped excursion centre with kayaks, sailing boats, paddle boards and bicycles
- Private vehicles for transfers and organized excursions
- Interactive nature, social and conservation programs
- Rowing boats to access nearby reefs
- Breakfast, lunch and dinner
Titilaka's cuisine emphasises on simple nutritious food to provide energy for the excursions, but is yet light enough considering the high altitude. Guests are offered daily specials and a selection of à-la-carte options and choose to dine in their room, in the main dining room, on the terraces or picnic style on outings. A full breakfast is served from dawn until noon, including local breads, cheeses, fruits and egg options. Lunch and appetizers are served from noon until 3pm and an Afternoon Tea and Sundowner are offered after the excursions. Cocktails and dinner are served from 7pm. A selection of creative snacks is offered throughout the day.
- Experienced concierge service to help organize travel arrangements
- 24-hour room and laundry service
- Housekeeping three times per day
- Nurse; first aid and oxygen available at all times, 40-minutes transfer to a local hospital
- Massage room offering various spa treatments.
- As a child-friendly lodge, activities and excursions are adequate for children. The staff is trained and accustomed to working with children of various ages and nationalities. Cribs and Nanny services are available upon request.
- Full connectivity including international phone service and complimentary wireless internet access

TITILAKA

LAGO TITICACA / PERÚ

ROOMS

The hotel features eighteen lake-facing rooms with exceptional view which are spread on three levels connected by a central hallway. Each room has an open format, a fully equipped bathroom and contemporary furniture complemented by local textiles and fresh flowers.

Each room is equipped with:

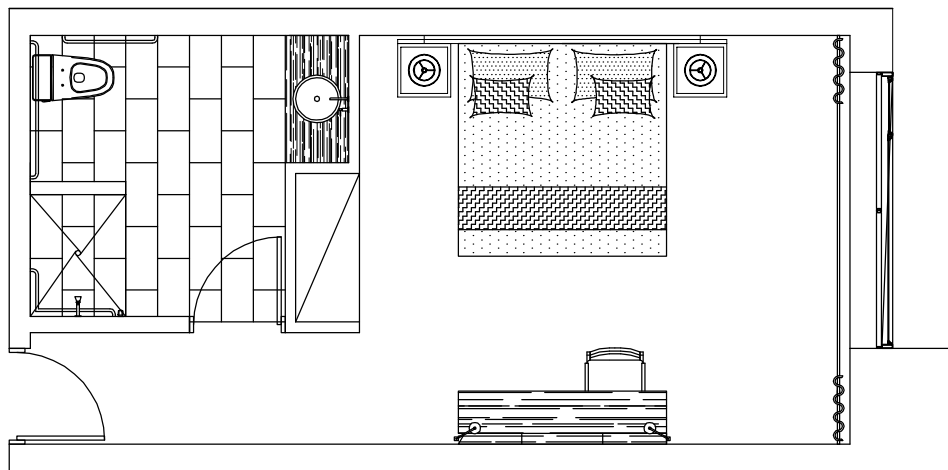
- Blackout curtains, centralized lighting, individual reading lamps
- Individually-controlled heated floors
- Sumptuous high-quality bedding, individual down duvets and extra pillows
- Fully stocked complimentary minibar
- Personal safe
- Organic bathroom amenities
- Two telephones
- Coffee table, desk, closet space



TITILAKA

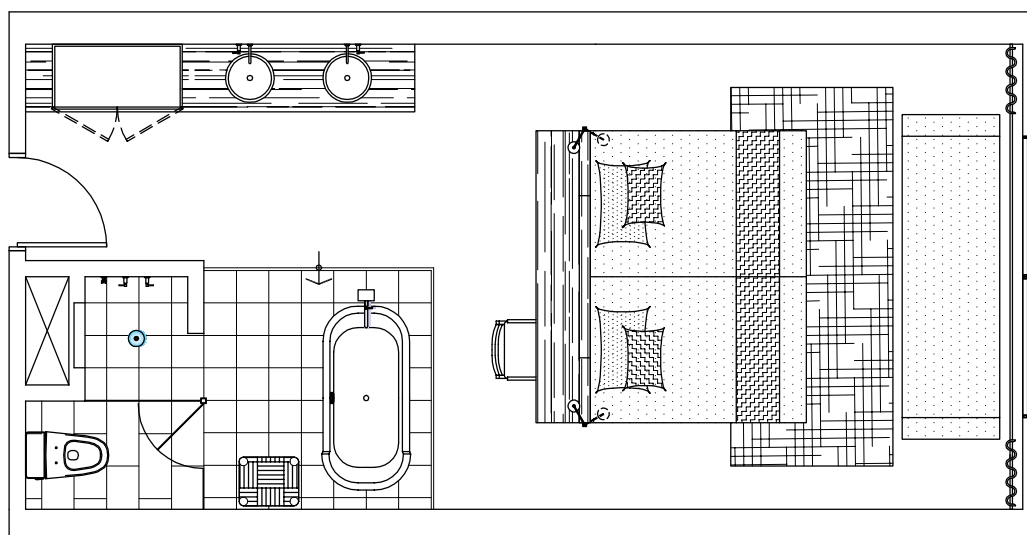
LAGO TITICACA / PERÚ

Explorer



Our 4 Explorer rooms (28 m² / 301 sq. ft.) are located on the first and second floor featuring a king-sized bed and a sofa bed. The bathroom is equipped with a shower, toilet and washbasin.

Dawn / Amanecer

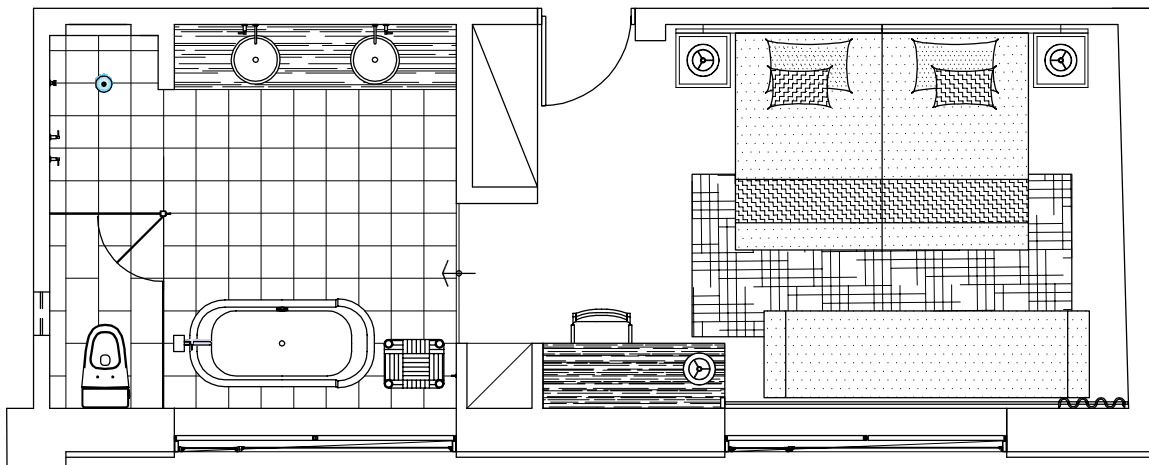


Located on the second and third floor, the 8 Dawn Rooms (30-40 m² / 322-430 sq. ft.) face east towards sunrise. These lake-view rooms have an open format, integrated bathroom, private toilet and oversized bathtub.

TITILAKA

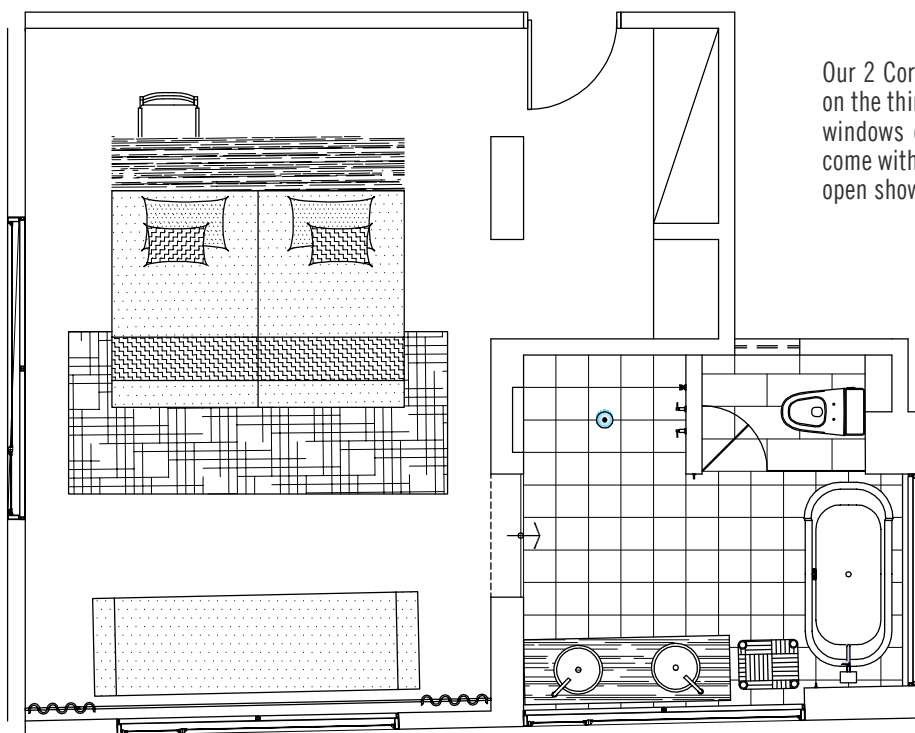
LAGO TITICACA / PERÚ

Dusk / Atardecer



With a spectacular view of the sunset, the 4 Dusk Rooms, (29 – 47 m² / 308-505 sq. ft.) are located on the second and third floor facing west. These rooms include a separate bathroom with private toilet, open shower and oversized bathtub.

Corner



Our 2 Corner Rooms (38-43 m² / 409-463 sq. ft.) on the third floor have awe-inspiring views via the windows on two sides of the room. These rooms come with a separate bathroom with private toilet, open shower and oversized bathtub.

TITILAKA

LAGO TITICACA / PERÚ

ROOM CHART

Room Number	Room Category	Area (m ²)	Area (Sq. Ft.)	Bed	Bathroom	Other
102	Explorer	28.12	303	1 King	Open Twin Basin, Separate WC & Shower	
104	Explorer	29.72	320	1 King	Open Twin Basin, Separate WC & Shower	Handicap Access
201	Dawn	34.33	370	1 King & Sofabed	Open Bathroom with Shower, Bathtub & Separate WC	
202	Explorer	28.12	303	1 King & Sofabed	Open Twin Basin, Separate WC & Shower	
203	Dusk	29.72	320	2 Twins & Sofabed	Open Bathroom with Shower, Bathtub & Separate WC	Connected Room
204	Explorer	25.97	280	1 King & Sofabed	Open Twin Basin, Separate WC & Shower	Connected Room
205	Dawn	36.21	390	1 King & Sofabed	Open Bathroom with Shower, Bathtub & Separate WC	
206	Dusk	40.94	441	2 Twins & Sofabed	Open Bathroom with Shower, Bathtub & Separate WC	
207	Dawn	39.41	424	2 Twins & Sofabed	Open Bathroom with Shower, Bathtub & Separate WC	
208	Dawn	38.59	415	2 Twins & Sofabed	Open Bathroom with Shower, Bathtub & Separate WC	
209	Dusk	47.43	511	2 Twins & Sofabed	Separate Bathroom with Shower, Bathtub & WC	Connected Room
210	Dawn	35.06	377	2 Twins & Sofabed	Open Bathroom with Shower, Bathtub & Separate WC	Connected Room
305	Dawn	36.21	390	1 King & Sofabed	Open Bathroom with Shower, Bathtub & Separate WC	
306	Dusk	40.94	441	2 Twins & Sofabed	Open Bathroom with Shower, Bathtub & Separate WC	
307	Dawn	39.41	424	2 Twins & Sofabed	Open Bathroom with Shower, Bathtub & Separate WC	
308	Dawn	38.59	415	2 Twins & Sofabed	Open Bathroom with Shower, Bathtub & Separate WC	
309	Corner	47.43	511	2 Twins & Sofabed	Separate Bathroom with Shower, Bathtub & WC	
310	Corner	35.06	377	2 Twins & Sofabed	Open Bathroom with Shower, Bathtub & Separate WC	

TITILAKA

LAGO TITICACA / PERÚ

by Andean

Lake Titicaca, Puno - Peru
USA T. +1 347 713 7030
Peru T. +51 1 700 5106
titilaka@aeco.pe
www.titilaka.pe

