



5 BEYOND

DISCOVER

Suyian Conservancy



& BEYOND

A story of conservation



Located in the northern region of Laikipia in central Kenya, forming part of over 80 937 hectares (200 000 acres) of privately managed land, Suyian Conservancy shelters a diverse array of ecosystems and rich wildlife, offering an immersive safari experience.

Why visit Suyian Conservancy?

A wildlife-rich and diverse ecosystem nestled between the southeast and northwest Laikipia Conservancies, with the Ewaso Narok River in the east and the ever-present silhouette of Mt Kenya as its backdrop.



1

EXCLUSIVE LOCATION

Suyian shelters approximately 44 000 acres (178 km²) of prime wilderness and conservation land with private traversing rights across five distinct habitats. The conservancy forms part of a vital wildlife movement corridor between Laikipia and the northern conservancies. A limited number of vehicles and sensitive off-roading practices afford close-up sightings of iconic wildlife.



2

A WILDLIFE HAVEN

The Laikipia region is home to many of the country's endangered species, with rarities including the elusive black (melanistic) leopard. It's also seen successful growth of African wild dog populations and is now recognised as the second-most important site for them in Africa. You're also likely to encounter large numbers of unique Grévy's zebra, gerenuk, and reticulated giraffe.



3

CONSERVATION AT HEART

This was once a family-owned cattle ranch dating back to 1920. Over time, the conservancy has been transformed from a livestock area to one managed for land preservation and community partnership. Today, wildlife moves freely between neighbouring conservancies and Suyian, which together host a larger concentration of wildlife than any other landscape in Kenya, outside of the Masai Mara National Reserve.



4

TRANSFORMATIVE EXPERIENCES

Suyian offers a variety of unique adventures, including twice-daily safari game drives, guided nature walks, horseback riding safaris, camel experiences, local community visits and scenic helicopter flights to some of the region's most diverse landscapes, such as Suguta Valley, Ololokwe and Mt Kenya.

DISCOVER SUYIAN CONSERVANCY

Why travel with &Beyond?

1 TRAVEL WITH HEART

Our core ethos of "Care of Land, Wildlife & People" drives all that we do. When you travel with us, you make a meaningful contribution to the preservation of our world's cultures and wildlife, and leave having had an opportunity to gain first-hand experience of some of our conservation and community initiatives.

2 IN OUR HANDS

We are on call 24/7 to assist you throughout your journey. With over 2 000 &Beyonders, including guides and ground logistics teams on three continents, you will be in our hands from the moment you arrive to the moment you leave. Additionally, we offer a personal concierge service that is only a phone call away should you require any assistance at any point during your trip.

3 FINEST GUIDES

We operate three ranger training schools and are renowned for having the most highly trained, professional and knowledgeable guides, rangers, naturalists and trackers, who offer intriguing cultural insights as well as interpretive wildlife experiences.

4 TRAVEL EXPERTS

Big or small, we are all about tailoring trips around your specific interests and expectations. Our expert travel specialists are able to personalise a range of experiences for individual travellers, groups, families, wedding parties and special interest groups.

5 PERFECT MOMENTS

With journeys lovingly crafted from perfect moments, you will return from an &Beyond adventure feeling that nothing will take your breath away quite like this ever again. Our collection of signature experiences is often exclusive to &Beyond, ensuring a unique adventure.



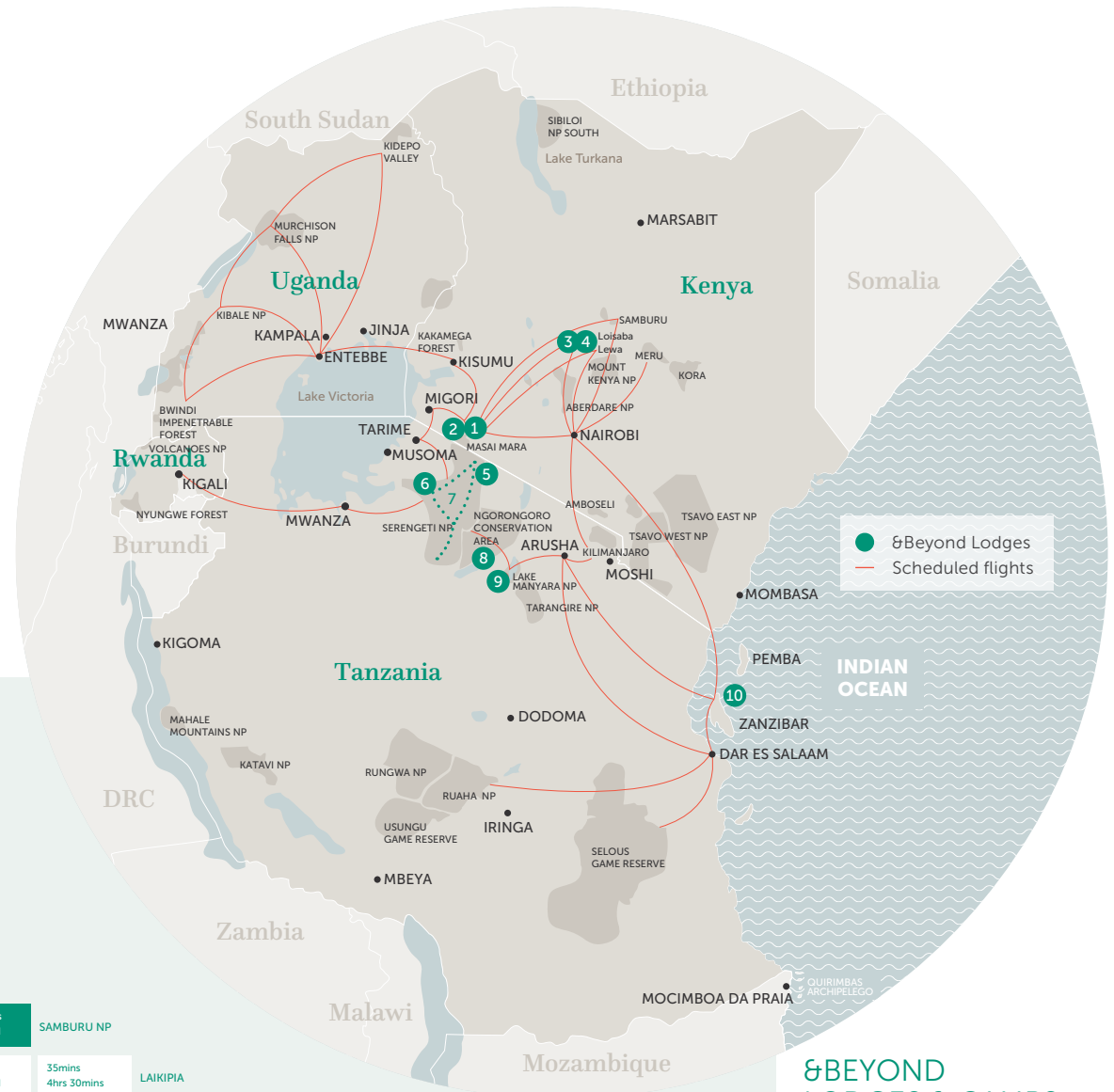
Suyian Conservancy brings the full breadth of Laikipia to life through layered storytelling, meaningful interaction, and a lodge that feels as though it has grown organically from the ground it rests on. ”

JOSS KENT, &BEYOND EXECUTIVE CHAIRMAN & CEO

DISCOVER SUYIAN CONSERVANCY

Travel Kenya and beyond

Visiting East Africa and travelling across this vast landscape requires much thought and attention. Contact your preferred Travel Specialist to assist with your travel plans.



GETTING THERE

Jomo Kenyatta International Airport in Nairobi is Kenya's main gateway for international flights, including routes from South Africa, the United Kingdom, France, the Netherlands and Dubai. From Nairobi, scheduled daily flights operate from Wilson Airport to Laikipia, Mombasa, Lamu, Amboseli, the Masai Mara, Meru, Nanyuki and Samburu. Private charter flights are also available, including direct flights to the coastal airports of Mombasa or Malindi.

To Suyian Conservancy

The conservancy is easily accessible by air and road.

By air:

Scheduled light aircraft flight: Safarilink and AirKenya offer scheduled flights from Nairobi's Wilson Airport to Loisaba Airstrip in Laikipia, followed by a one-hour game drive to Suyian Conservancy.

Private charter flight: Private charters can land directly at Suyian's private airstrip, followed by a 20-minute drive to the lodge.

By road:

Laikipia is accessible by road from Nairobi in approximately five hours, or from Nanyuki in approximately 90 minutes, in a 4x4 vehicle. Road transfer times depend on traffic and road conditions.

TRAVEL TIMES

NAIROBI						
✈️ 35mins	✈️ 3hrs 45mins	AMBOSELI				
✈️ 1hr 30mins	✈️ 2hrs 35mins	SAMBURU NP				
✈️ 55mins	✈️ 3hrs 30mins	LAIKIPIA				
✈️ 55mins	✈️ 5hrs	MERU				
✈️ 1hr 15mins	✈️ 3hrs 35mins	MASAI MARA				
✈️ 30mins	✈️ 3hrs	RIFT VALLEY				
✈️ 1hr 10mins	✈️ 5hrs 30mins	KENYAN COAST				

Disclaimer: All flights may include multiple stops, and scheduling is a guideline. Times will vary. Above times are based on best-practice logistics.

&BEYOND LODGES & CAMPS

KENYA

- 1 Bateleur Camp
- 2 Kichwa Tembo Tented Camp
- 3 Suyian Lodge
- 4 Suyian Homestead

TANZANIA

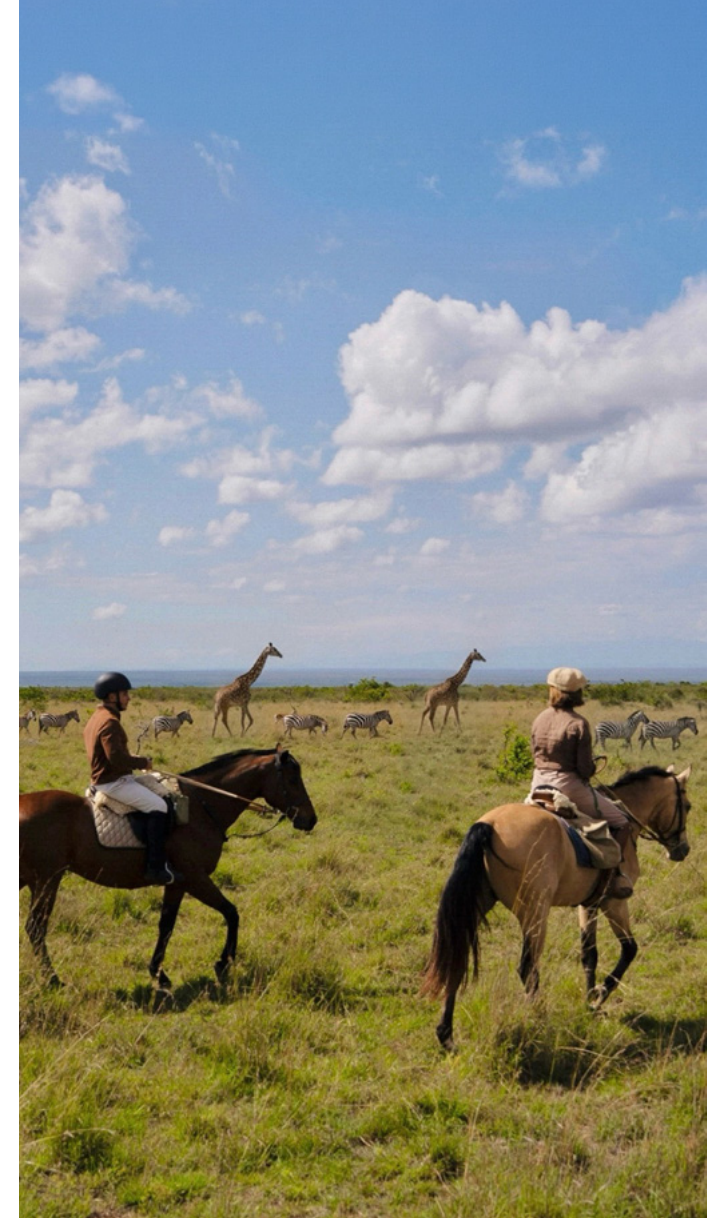
- 5 Klein's Camp
- 6 Grumeti Serengeti River Lodge
- 7 Serengeti Under Canvas
- 8 Ngorongoro Crater Lodge
- 9 Lake Manyara Tree Lodge
- 10 Mnemba Island

DISCOVER SUYIAN CONSERVANCY

Regional information

SUYIAN CONSERVANCY

Altitude	1 855 m (6 086 ft)
Malaria area	Laikipia is a low-risk malaria area due to the high altitude.
Airport / Airstrip	Loisaba airstrip
GPS coordinates	Suyian Lodge: 0°28'57"N 36°44'44"E Suyian Homestead: 0°29'17.47"N 36°44'48.21"E Suyian Airstrip: 0°30'39.76"N 36°41'23.70"E Loisaba Airstrip: 0°36'43.6"N 36°48'03.2"E
Best time to travel	Laikipia is a fantastic year-round destination. The long, cool dry season occurs from July to October, and the short, hot dry season occurs in January and February. During these times, water is limited, so wildlife is easily found gathered near or around the last remaining sources. The conservancies in Laikipia have many wetlands that attract yet disperse an abundance of animals during the short rains in November and December, as well as the long rains from April to June.
Weather	The climate at Laikipia Plateau is cool and temperate. Temperatures are uniform throughout the year due to being so close to the equator.
Rainfall	Laikipia is a semi-arid area. The long, cool dry season occurs from July to October, and the short, hot dry season occurs in January and February. The long rains typically occur from April to June and the short rains in November and December.
Temperature averages	June to September: Temperatures don't vary too much and are around 24°C (75°F). It can be cold at night and in the early morning, with a temperature of around 12°C (54°F). October to May: Temperatures range from 12°C (54°F) - 24°C (75°F), depending on rainfall.





&BEYOND

DISCOVER SUYIAN CONSERVANCY

&Beyond Suyian Lodge

Inspired by the ancient rock formations that characterise the region, Suyian Lodge seamlessly blends into its natural surroundings, embracing a unique sense of place.

DISCOVER SUYIAN CONSERVANCY
& Beyond Suyian Lodge

Why stay?

1 UNPARALLELED LOCATION

An important anchor to Suyian is the Rock Sanctuary, a mesmerising formation of ancient stone boulders. Facing these mighty structures on the edge of the escarpment is Suyian Lodge. The lodge, and its extraordinary view of the granite kopjes and vast plains below, which includes glimpses of the Ewaso Narok River to the east and Mt Kenya in the distance, is a vital and sheltered space, offering breathtaking sunrises to early risers every morning.

3 IMMERSIVE EXPERIENCES

An array of unique adventures allows guests to craft their ideal day amid the iconic landscapes of this conservation haven. Choose from twice-daily safari game drives, guided nature walks, horseback riding safaris, camel experiences, and active ranching tours. Immerse yourself in the local culture on a community village visit or indulge in outdoor yoga, scenic helicopter flights and wellness treatments.

2 UNIQUE LODGE DESIGN

The intent behind the lodge's design draws from the surrounding granite kopjes and the area's resilient plant life. With greenery growing from above, the lodge's location and curved appearance mirrors the opposite undulating ridge, blending naturally into the environment. Set to capture the spirit of the area's nature and culture, the lodge interior reflects the Afro Wabi-Sabi sentiment of taking pleasure in the transient nature of earthly things. Subtle cultural touches, inspired by local semi-nomadic tribes, are infused with modest luxury. Mottled undertones pay homage to the region's most cherished wildlife.

4 FAMILY FRIENDLY

The lodge features a two-bedroom Family Suite ideal for families with young children, equipped with a spacious, shared lounge area and private plunge pool. There is also one Triple Suite available. The main guest area has a large communal dining table with booth seating in the dining area while safari experiences can be tailored to suit guests of all ages, allowing for precious time to be enjoyed together.



Lodge amenities



1

DINING LOCATIONS

Enjoy your meals, celebrating the best of Laikipia's homegrown produce, in a variety of indoor and outdoor locations, including at the chef's table for a casual supper in the house kitchen, in the private dining room, or outside under the evening sky on your expansive private deck.



2

AL FRESCO GUEST AREAS

The campfire-style sunken firepit shares breathtaking views of the vast open plains beyond, perfect for pre- and post-dinner drinks and gazing at the sunrise. While the sheltered outdoor courtyard features a central open-fire cooking area with Samburu-inspired sculptured hanging grills offering guests an experiential dining experience.



3

SAMBURU BAR

The vibrant, circular Samburu bar is the heart of the lodge. Offering both indoor and outdoor seating, it is the perfect setting to enjoy one of our signature cocktails and indulge in convivial conversation with other guests.



4

POOL WITH A VIEW

Become immersed in the lodge's sparkling rim-flow swimming pool, where water cascades gently over the edge. Shaded sun loungers beckon for relaxation, while sunken daybeds offer a cool escape boasting unparalleled views.



5

LOUNGE, LIBRARY AND MAP ROOM

Curl up with a good book in the library, which also doubles as an interpretive centre for guides and specialists to host various conservation talks and discussions. Or learn more about the region's wildlife and surrounds in the interactive map room. The sitting room also offers the ideal space to engage with guides and other guests around the built-in fireplaces.

Lodge amenities



6

CULINARY EXCELLENCE

Indulge in unpretentious, wholesome farm-style food celebrating the best of the Laikipia region. Meals feature homegrown produce from the local shamba (kitchen herb garden) or locally sourced ingredients with a key focus on sustainable and seasonal produce. Enjoy a selection of in-house pickles, preserves and dried goods.



7

KITCHEN HERB GARDEN

A working herb garden helps to further ensure that all lodge meals are cooked using only the freshest and most seasonal produce possible. Guests are welcome to join the lodge chefs as they collect the day's special harvest.



8

WELLNESS CENTRE

Tucked away from the guest suites and nestled between the rocky outcrops, sits the lodge's wellness centre. There are two treatment rooms boasting striking views of the conservancy, each with a private shower, changing area and veranda, plus an additional steam room with a cold plunge pool.



9

SAFARI SHOP

Showcasing Kenya's top designers, the lodge's Safari Shop features ethical fashion and décor from VAST Madebyafrica, bold jewellery by Ami Doshi Shah, handcrafted ceramics by Tope Creations Pottery, and globally inspired pieces from Urban Ranch—celebrating sustainability, innovation, empowerment, and the rich artistry and cultural heritage of Kenyan craftsmanship.



10

GYM AND YOGA

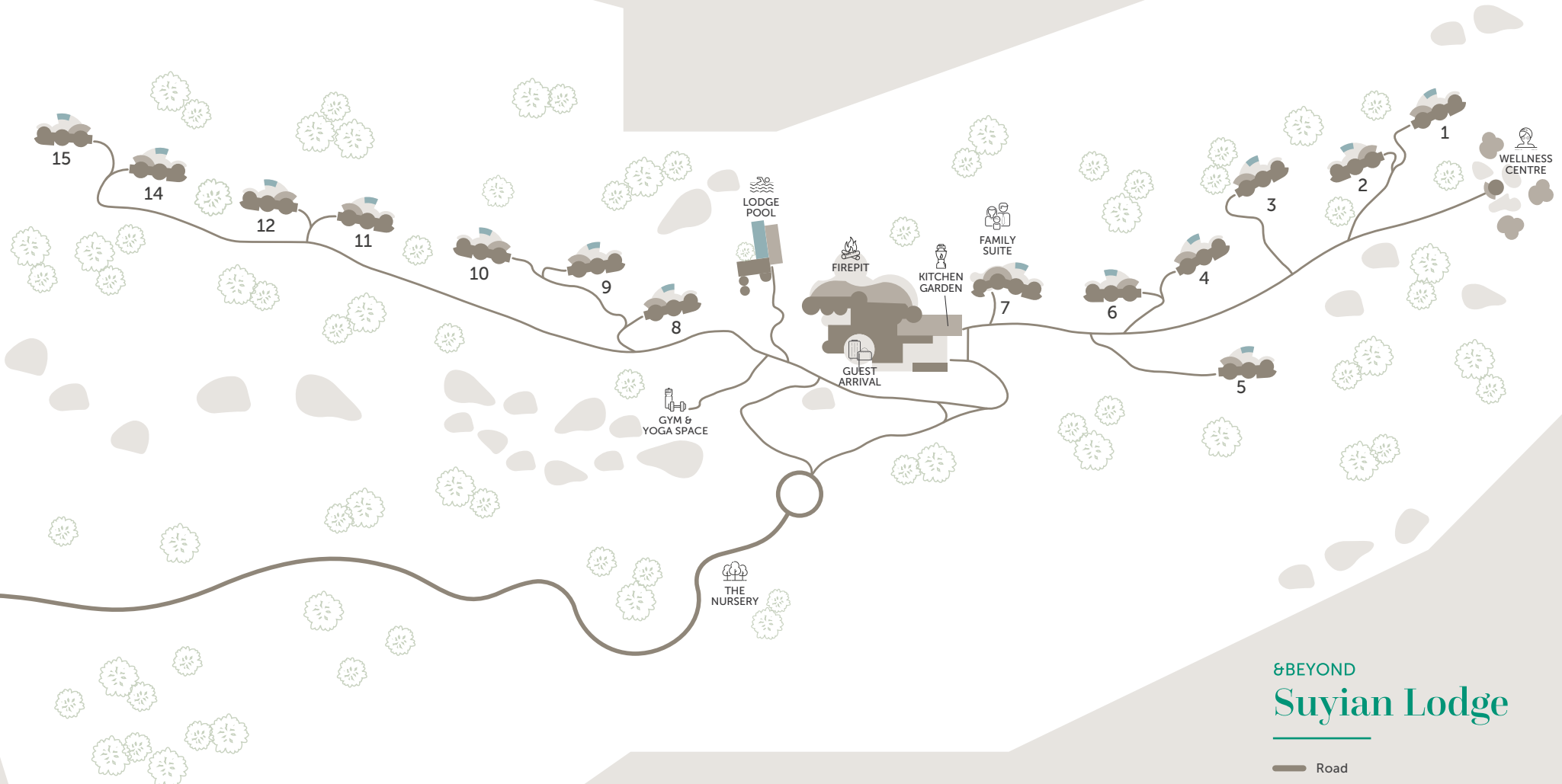
The compact state-of-the-art gym is situated close to the main guest area and features both cardio and strength training fitness equipment. Connected to the gym is an outdoor shaded yoga space, offering daily yoga sessions for groups or individuals*.

**Private sessions are at an additional cost*

DISCOVER SUYIAN CONSERVANCY

BEYOND SUYIAN LODGE

ROCKY RIDGE (THE SANCTUARY)



WELLNESS CENTRE

BEYOND
Suyian Lodge

- Road
- Path
- Private plunge pool

Lodge overview

LODGE

BEYOND SUYIAN LODGE

Maximum number of guests	31
Number of rooms	14 Suites, including a two-bedroom Family Suite and 1 Triple Suite
Room types	Suite
Family accommodation	1 Family Suite and 1 Triple Suite
Pilot / Guide accommodation	1 Pilot / Guide room
Distance between rooms	15 - 20 m (49 - 65 ft)
WILDchild programme	Yes
Check-in and check-out times	14h00 / 10h00
Lodge closure	None

DINING

Food / Dietary options	Kosher not available. Halaal and other special dietary requests are available and must be booked in advance
Private butler service	Yes
Plated service	Yes
Private dining	Yes

PAYMENT TYPES

Credit cards accepted	Mastercard and Visa
Currency	USD is widely used, however, notes dated prior to 2006 are not accepted

FACILITIES

Power	24-hour power (100% solar with generator backup)
Internet access	Yes, Wi-Fi throughout
Private dining and wine room	Yes
Traditional boma	No
Outdoor dining and courtyard	Yes
Bar	Yes
Interactive kitchen	Yes
Swimming pool	Yes, lodge swimming pool and private plunge pools
Wellness offering	Spa treatments in wellness centre as well as a steam room with cold plunge pool
Fitness centre	Yes, well-equipped gym and yoga space, plus yoga mats in each suite
Conference facilities	No
Wedding and blessings	Yes
Wheelchair accessibility	No
Complimentary laundry service	Yes
Beyond Safari Shop	Yes

DISCOVER SUYIAN CONSERVANCY
 Beyond Suyian Lodge

Inclusions

RATE INCLUDES

Accommodation	✓
Three meals daily	✓
Soft drinks, house wines, local brand spirits and beers, and tea and coffee	✓
Twice-daily safari game drives	✓
Refreshments on safari game drives	✓
Scheduled group yoga sessions, active ranching tours, cultural experiences, guided nature walks, horseback riding safaris, camel experiences and local community visits*	✓
The exclusive use of one pair of SWAROVSKI OPTIK binoculars per room to share for the duration of your stay	✓
Guides' Journal with illustrated wildlife and vegetation checklist, and an area map with illustrated Star Birds checklist	✓
WILDchild programme	✓
Laundry	✓
Transfers to and from the airstrip	✓
Emergency medical evacuation cover	✓

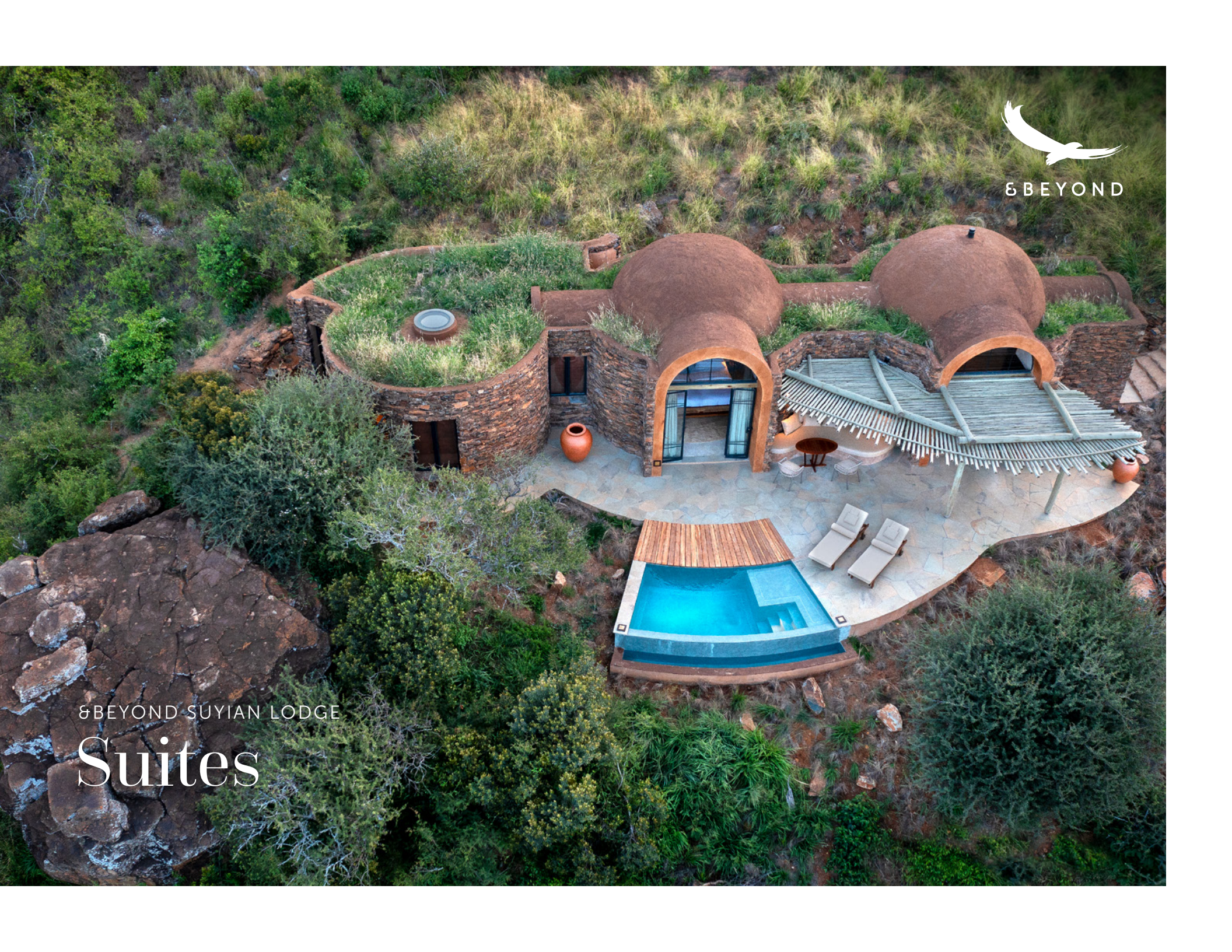
*These activities may incur an additional charge for groups

RATE EXCLUDES

All items of a personal nature	✗
Champagne, cognac, fine wines, premium brand spirits and cigars	✗
Private yoga sessions, helicopter flights and wellness treatments	✗
Conservation fees	✗
Safari Shop purchases	✗
Telephone calls	✗
Gratuities	✗
Weddings and blessings	✗

NOTE: Unmanned Aerial Vehicles: Please be advised that the use of unmanned aerial vehicles (drones) is prohibited in the conservation areas where we operate, until such a time as their impact on wildlife and anti-poaching initiatives can be assessed. This rule will apply throughout Africa, as our partners in various countries and regions have adopted a similar stance.





BEYOND SUYIAN LODGE

Suites

An ode to the region

The lodge's natural stone cladding harmonises with its surroundings, while subtle cultural touches and the mottled undertones of the African wild dog emerge from within.



GUEST SUITE INTERIOR



PRIVATE LOUNGE WITH DAYBED



GUEST BATHROOM RICH IN TEXTURE

DISCOVER SUYIAN CONSERVANCY
Beyond Suyian Lodge Accommodation

SUITE

13 Suites / Max. 2 guests per Suite

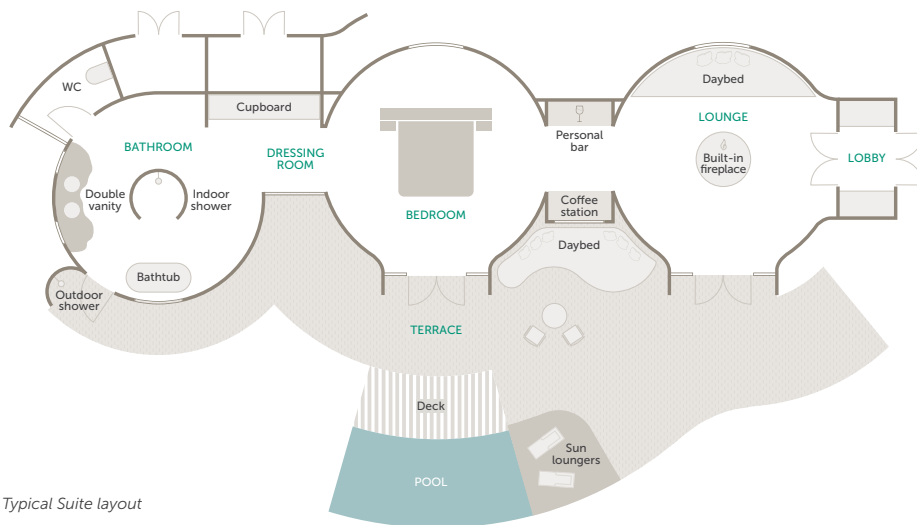


SAFARI ECHOES

Mimicking the rock formations found in front of the lodge, each Suite is a true reflection of the region's remarkable biodiversity, naturally blending into its surroundings. Nestled along the escarpment, expect a luxurious bedroom, ensuite bathroom and separate lounge area, opening onto a deck with a private rim-flow plunge pool.

ROOM FACILITIES

Suite size	180 m ² (1 938 ft ²)
Suite configuration	Bedroom in the centre, with bathroom to one side, and a lounge with a daybed on the other
Private veranda	Yes
Private plunge pool	Yes
Personal bar	Yes
Personal coffee station	Yes
Air conditioning / heating	No, as not required in this environment
Overhead fans	Yes
Mosquito nets	Yes
Bath	Yes
Indoor shower	Yes
Outdoor shower	Yes
Separate WC	Yes
Telephone	Yes
Hairdryer	Yes
Internet access	Yes
In-room safe	Yes
Plug type	UK, with USB and USB-C adaptors
Triple bed option	1 Triple Suite (16 years and under only)
Twin bed option	Yes, beds are within the same bed frame
Double bed option	Yes
Wheelchair accessibility	No



Typical Suite layout

DISCOVER SUYIAN CONSERVANCY
& Beyond Suyian Lodge Accommodation

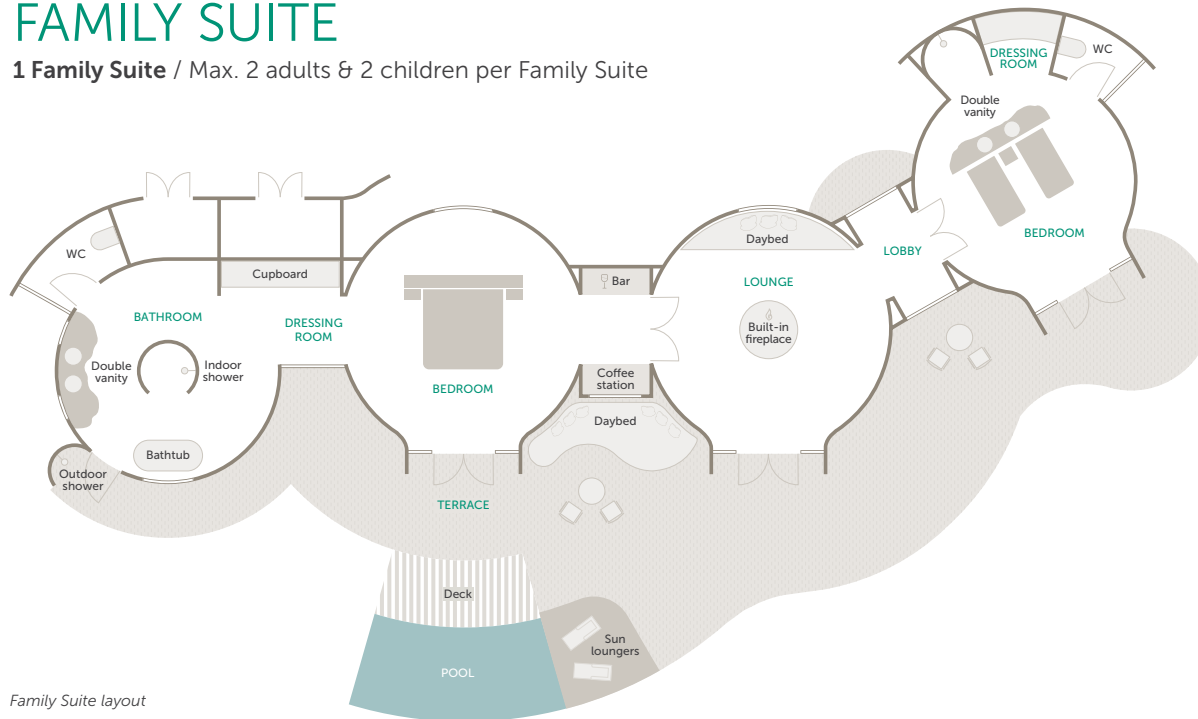
Family safari charm

Designed to bring families close to the African bush in unparalleled luxury, the Family Suite features all the comforts of a regular Suite but with an additional, slightly smaller children's bedroom and separate bathroom. A private deck and rim-flow plunge pool make family time on safari all the more enjoyable.



FAMILY SUITE

1 Family Suite / Max. 2 adults & 2 children per Family Suite



Family Suite layout



DISCOVER SUYIAN CONSERVANCY
Beyond Suyian Lodge Accommodation

ROOM FACILITIES

Number of suites	1
Suite size	205 m ² (2 206 ft ²)
Suite configuration	Main bedroom in the centre, with a lounge and bathroom on each side. Second bedroom with shower and separate WC
Private veranda	Yes
Private plunge pool	Yes
Personal bar	Yes
Personal coffee station	Yes
Air conditioning / heating	No, as not required in this environment
Overhead fans	Yes
Mosquito nets	Yes
Bath	Yes, in main bedroom only
Indoor shower	Yes, in both bedrooms
Outdoor shower	Yes, in main bedroom only
Separate WC	Yes, in both rooms
Telephone	Yes
Hairdryer	Yes
Internet access	Yes
In-room safe	Yes
Plug type	UK, with USB and USB-C adaptors
Triple bed option	Yes, on request (16 years and under only)
Twin bed option	Yes, in the main bedroom within the same bed frame
Double bed option	Yes, in main bedroom only Children's bedroom is a twin setup
Wheelchair accessibility	No



A FAMILY RETREAT

Generously designed for shared adventures, yet cosy enough for quiet moments together.



Accommodation comparison

	SUITE	FAMILY SUITE
Number of rooms	13	1
Room size	180 m ² (1 938 ft ²)	205 m ² (2 206 ft ²)
Room configuration	Bedroom in the centre, with bathroom to one side, and a lounge with a daybed on the other	Main bedroom in the centre, with a lounge and bathroom on each side Second bedroom with shower and separate WC
Private veranda	Yes	Yes
Private plunge pool	Yes	Yes
Personal bar	Yes	Yes
Personal coffee station	Yes	Yes
Air conditioning / heating	No, as not required in this environment	No, as not required in this environment
Overhead fans	Yes	Yes
Mosquito nets	Yes	Yes
Bath	Yes	Yes, in main bedroom only
Indoor shower	Yes	Yes, in both bedrooms
Outdoor shower	Yes	Yes, in main bedroom only
Separate WC	Yes	Yes, in both bedrooms
Telephone	Yes	Yes
Hairdryer	Yes	Yes
Internet access	Yes	Yes
In-room safe	Yes	Yes
Plug type	UK, with USB and USB-C adaptors	UK, with USB and USB-C adaptors
Triple bed option	Yes, 1 Triple Suite (16 years and under only)	Yes, on request (16 years and under only)
Twin bed option	Yes, beds are within the same bed frame	Yes, in the main bedroom within the same bed frame
Double bed option	Yes	Yes, in main bedroom only
Wheelchair accessibility	No	No



&BEYOND

DISCOVER SUYIAN CONSERVANCY

&Beyond Suyian Homestead

A sole-use safari home for up to 10 guests, designed for slower safaris, shared moments, and effortless living. Here, space, time, and the wild unfold entirely on your terms.

DISCOVER SUYIAN CONSERVANCY
Beyond Suyian Homestead

Why stay?

1 A HOME, NOT A STAY
Settle into a sole-use safari home where everything adapts to you. No set schedules, no shared spaces, and no interruptions. Just comfort, privacy, and the feeling of being entirely at home.

2 YOUR RHYTHM, UNINTERRUPTED
Days unfold entirely on your terms. Come together, drift apart, head out, or stay in, with a private guide and vehicle shaping each experience around your curiosity.

3 IMMERSIVE EXPERIENCES
From game drives and guided nature walks to horseback safaris, camel experiences, yoga, wellness treatments, and cultural visits, each day brings new ways to experience Suyian Conservancy.

4 DESIGNED BY THE LAND
Inspired by rock formations and ridgelines, Suyian Homestead feels shaped by its surroundings. Local materials, craftsmanship, and colour create a space that feels grounded, layered, and deeply connected.

5 SERVICE THAT CARES
A dedicated team takes care of everything with quiet precision. Present when needed and unobtrusive when not, they make each day feel effortless, natural, and completely your own.



Lodge amenities



1

INFINITY POOL

Unwind in the 15-m (49-ft) infinity pool overlooking the Sanctuary, made for slow swims, long pauses, and watching the landscape shift around you.



2

HOUSE KITCHEN

The open, family-style kitchen is where meals feel personal and relaxed, with a private chef shaping each dining moment around your rhythm.



3

TASTE OF SUYIAN

Tailored to your palate, menus draw from kitchen gardens, local produce and northern Kenyan ingredients, with meals that feel fresh and naturally abundant. Seasonal produce, local sourcing and flexible dining throughout the day bring an authentic, flavour-led approach to every meal.



4

PRIVATE COURTYARDS

Restful outdoor spaces are woven throughout Suyian Homestead, offering room to read, reflect, or simply spend time on your own.

Lodge amenities



5

OUTDOOR DINING

Enjoy the relaxed outdoor pergola with a pizza oven and grill, designed for shared meals, easy conversation, and casual dining in the open air.



6

GYM AND YOGA

The well-equipped gym offers a dedicated space to move, stretch or reset, whenever it suits you. Outdoors, a shaded yoga deck invites daily sessions shaped around the natural rhythm of the day.



7

WELLNESS TREATMENTS

Restorative wellness treatments fit naturally into your day, bringing a deeper sense of calm, ease, and restoration, all enjoyed in the privacy of your suite.

DISCOVER SUYIAN CONSERVANCY
&Beyond Suyian Homestead



Lodge overview

LODGE

Maximum number of guests	10 (11 guests with 1 Triple Suite)
Number of rooms	5 Suites, including 1 Master Suite and 4 Suites (1 Suite can be converted to a Triple Suite on request)
Family accommodation	Exclusive-use homestead 1 Triple Suite available on request Child policy includes guests up to 16 years old Cots are available on request, using standard camping cot setup
WILDchild programme	Yes
Pilot / Guide accommodation	No, available at Suyian Lodge only
Distance between rooms	Exclusive-use homestead
Check-in and check-out times	14h00 / 11h00

DINING

Food / Dietary options	Special dietary requests are available and must be booked in advance
Private butler service	Yes
Plated service	Yes
Private dining	Yes

PAYMENT TYPES

Credit cards accepted	Visa, Diners, Amex and Mastercard
Currency	All major currencies accepted

BEYOND SUYIAN HOMESTEAD

FACILITIES

Power	24-hour power (100% solar with generator backup)
Internet access	Yes, Wi-Fi throughout
Wine store or cellar	No
Boma	No
Bar	Yes
Interactive kitchen	Yes
Swimming pool	Yes
Wellness offering	Healing Earth spa treatments offered in-room
Fitness centre	Yes, well-equipped gym and yoga space
Conference facilities	No
Wedding and blessings	Yes
Wheelchair accessibility	No
Complimentary laundry service	Yes
Beyond Safari Shop	Yes, at Suyian Lodge

OTHER

Vehicle type	6-seater private vehicle
Private 4x4 safari vehicle	Yes, two private vehicles
Private photographic vehicle	Yes, special camera armrest mounts and sandbags in each vehicle

DISCOVER SUYIAN CONSERVANCY
 Beyond Suyian Homestead

Inclusions

RATE INCLUDES

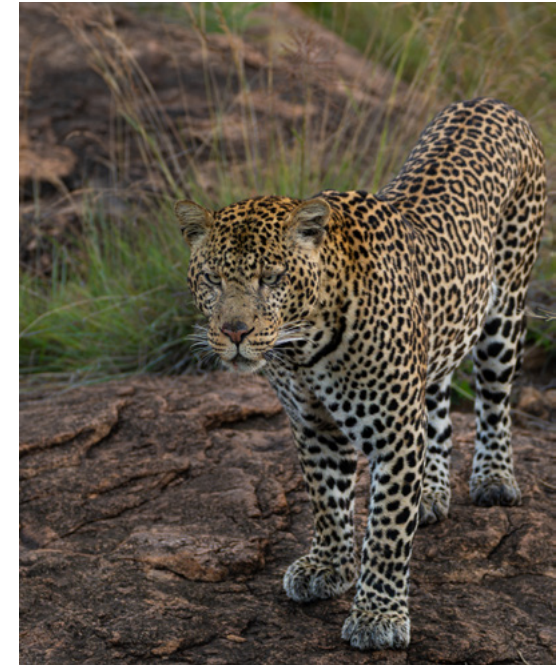
Accommodation	✓
Three meals daily	✓
Soft drinks, house wines, local brand spirits and beers, tea and coffee, and refreshments on safari game drives	✓
Laundry	✓
Two private vehicles and guides	✓
Twice-daily safari game drives, nature walk with an experienced guide, active ranching tour, cultural experience, horseback riding safari, camel experience, yoga, and local community visit*	✓
The exclusive use of one pair of SWAROVSKI OPTIK binoculars per room to share for the duration of your stay	✓
Guides' Journal with illustrated wildlife and vegetation checklist, and an area map with illustrated Star Birds checklist	✓
WILDchild programme	✓
Emergency medical evacuation insurance	✓
VAT	
Transfers to and from the lodge airstrip	✓

RATE EXCLUDES

Administration fee	✗
Telephone calls	✗
Safari Shop purchases	✗
Gratuities	✗
All items of a personal nature	✗
Champagne, cognac, fine wines, premium brand spirits and cigars	✗
Government bed levy	✗
Conservancy or park fees	✗
Landing fees	✗
Additional private vehicles	✗
Helicopter flights and wellness treatments	✗
Weddings and blessings	✗

*These activities may incur an additional charge for groups

NOTE: Unmanned Aerial Vehicles: Please be advised that the use of unmanned aerial vehicles (drones) is prohibited in the conservation areas where we operate, until such a time as their impact on wildlife and anti-poaching initiatives can be assessed. This rule will apply throughout Africa, as our partners in various countries and regions have adopted a similar stance.





&BEYOND

&BEYOND SUYIAN HOMESTEAD

Suites



Where living comes naturally

Each space within Suyian Homestead is shaped by the land around it. Open, layered, and quietly comfortable, this private safari home invites you to settle in and stay awhile.



MASTER SUITE BATHROOM



MASTER SUITE WITH PRIVATE LOUNGE



SUYIAN HOMESTEAD EXTERIOR

DISCOVER SUYIAN CONSERVANCY
 Beyond Suyian Homestead Accommodation

MASTER SUITE

1 Suite / Max. 2 guests



A SPACE OF ITS OWN

Set apart from the rest of Suyian Homestead, the Master Suite offers a deeper sense of privacy, with its own sitting area, dressing space, and outdoor courtyard.

ROOM FACILITIES

Suite size	84 m ² (904 ft ²)
Private veranda	Yes
Personal bar	Yes
Personal coffee station	Yes
Air conditioning / heating	Yes
Overhead fans	Yes
Mosquito nets	Yes
Bath	Yes
Shower	Yes
Separate WC	Yes
Telephone	Yes
Hairdryer	Yes
Internet access	Yes
In-room safe	Yes
Plug type	UK, with USB and USB-C adaptors All rooms have international adaptors
Triple bed option	Yes, 1 Triple Suite using a single bed configuration
Twin bed option	No
Double bed option	Yes
Wheelchair accessibility	No



Master Suite layout

DISCOVER SUYIAN CONSERVANCY
 Beyond Suyian Homestead Accommodation

SUITE

4 Suites / Max. 2 guests per Suite



YOUR OWN CORNER OF THE WILD

Each Suite is positioned to capture a different view, a different light, a different mood – connected to the home, yet entirely your own.

ROOM FACILITIES

Suite size	49 m ² (527 ft ²)
Private veranda	No
Personal bar	Yes
Personal coffee station	Yes
Air conditioning / heating	No
Overhead fans	Yes
Mosquito nets	Yes
Bath	Yes
Shower	Yes
Separate WC	Yes
Telephone	Yes
Hairdryer	Yes
Internet access	Yes
In-room safe	Yes
Plug type	UK, with USB and USB-C adaptors All rooms have international adaptors
Triple bed option	Yes, 1 Triple Suite using a single bed configuration
Twin bed option	Yes, separate bases
Double bed option	Yes
Wheelchair accessibility	No



Typical Suite layout

Accommodation comparison

	MASTER SUITE	SUITE
Number of rooms	1	4
Room size	84 m ² (904 ft ²)	49 m ² (527 ft ²)
Room configuration	Main bedroom with a private lounge on the other side of the fireplace Bathroom behind the bedroom, with a separate WC	Each suite has a slightly different layout, all with a bedroom, separate bathroom, and private WC
Private veranda	Yes	Yes
Private plunge pool	No	No
Personal bar	Yes	Yes
Personal coffee station	Yes	Yes
Air conditioning / heating	Yes	No
Overhead fans	Yes	Yes
Mosquito nets	Yes	Yes
Bath	Yes	Yes
Indoor shower	Yes	Yes
Outdoor shower	No	No
Separate WC	Yes	Yes
Telephone	Yes	Yes
Hairdryer	Yes	Yes
Internet access	Yes	Yes
In-room safe	Yes	Yes
Plug type	UK, with USB and USB-C adaptors All rooms have international adaptors	UK, with USB and USB-C adaptors All rooms have international adaptors
Triple bed option	Yes (1 room only)	Yes (1 room only)
Twin bed option	No	Yes
Double bed option	Yes	Yes
Wheelchair accessibility	No	No



BEYOND

DISCOVER SUYIAN CONSERVANCY

Lodge comparison

A quick-reference comparison between the two lodges at Suyian Conservancy, each with its own distinct character.



Lodge comparison

	SUYIAN LODGE	SUYIAN HOMESTEAD
OVERVIEW		
Lodge experience	Contemporary safari lodge with individual suites	Exclusive-use safari homestead
Maximum number of guests	31	10 (11 guests with 1 Triple Suite)
Number of rooms	14 Suites, including 1 Family Suite and 1 Triple Suite	5 Suites, including 1 Master Suite and 4 Suites (1 Suite can be converted to a Triple Suite on request)
Family accommodation	1 Family Suite and 1 Triple Suite Child policy includes guests up to 16 years old Cots available on request using standard camping cot setup	Exclusive-use homestead 1 Triple Suite available on request Child policy includes guests up to 16 years old Cots available on request using standard camping cot setup
WILDchild programme	Yes	Yes
Room types	Suites and Family Suite	Master Suite and Suites
Distance between rooms	15 – 20 m (49 – 65 ft)	Exclusive-use homestead
FACILITIES		
Power	24-hour power (100% solar with generator backup)	24-hour power (100% solar with generator backup)
Internet access	Yes, Wi-Fi throughout	Yes, Wi-Fi throughout
Wine store or cellar	Private dining and wine room	No
Boma	No	No
Interactive kitchen	Yes	Yes
Swimming pool	Yes, lodge swimming pool and private plunge pools	Yes, lodge swimming pool
Wellness offering	Spa treatments in wellness centre as well as a steam room with cold plunge pool	Healing Earth spa treatments offered in-room Full access to wellness centre at Suyian Lodge
Fitness centre	Yes, well-equipped gym and yoga space, plus yoga mats in each suite	Yes, well-equipped gym and yoga space
Conference facilities	No	No
Weddings and blessings	Yes	Yes
Wheelchair accessibility	No	No
Complimentary laundry service	Yes	Yes
Beyond Safari Shop	Yes	Yes, at Suyian Lodge

Accommodation comparison

SUYIAN LODGE

SUYIAN HOMESTEAD

	SUYIAN LODGE	SUYIAN HOMESTEAD
Room size	180 – 205 m ² (1 938 – 2 206 ft ²)	49 – 84 m ² (527 – 904 ft ²)
Room configuration	Suite: Bedroom in the centre, bathroom to one side and a lounge with a daybed on the other Family Suite: Main bedroom in the centre with a lounge and bathroom on each side. Second bedroom with shower and separate WC	Master Suite: Bedroom with separate lounge, dressing space and outdoor courtyard Suite: Standard suite layout
Private veranda / sala	Yes	Master Suite: Yes Suite: No
Private pool	Yes, private plunge pools	Yes, lodge swimming pool exclusive to the homestead
Personal bar	Yes	Yes
Personal coffee station	Yes	Yes
Air conditioning / heating	No, as not required in this environment	Master Suite: Yes Suite: No
Overhead fans	Yes	Yes
Mosquito nets	Yes	Yes
Bath	Yes, in the Family Suite's main bedroom only	Yes
Shower	Suite: Indoor and outdoor shower Family Suite: Indoor showers in both bedrooms; outdoor shower in main bedroom only	Yes, indoor only
Seperate WC	Yes	Yes
Telephone	Yes	Yes
Hairdryer	Yes	Yes
Internet access	Yes	Yes
In-room safe	Yes	Yes
Plug type	UK, with USB and USB-C adaptors	UK, with USB and USB-C adaptors All rooms have international adaptors
Triple bed option	1 Triple Suite (16 years and under only) Family Suite available on request (16 years and under only)	Yes, 1 Triple Suite using a single bed configuration
Twin bed option	Yes, beds are within the same bed frame Family Suite: Main bedroom only	Yes
Double bed option	Yes Family Suite: Main bedroom only; children's bedroom is a twin setup	Yes
Interleading door	Family Suite only	No
Wheelchair accessibility	No	No



DISCOVER SUYIAN CONSERVANCY

Adventures of a lifetime

Suyian offers a unique safari journey where conservation in action is woven into an immersive African bush experience.

DISCOVER SUYIAN CONSERVANCY
Adventures of a Lifetime

Experiences and highlights

Create your very own tailor-made wildlife adventure, ensuring a truly incomparable, interpretive wilderness experience.



1

TWICE-DAILY GAME DRIVES

Suyian is not only home to some of Africa's most iconic species, but also presents the opportunity to encounter rarely seen and unique Laikipia wildlife 'specials', such as the Beisa oryx, striped hyena, Laikipia hartebeest, desert warthog and black (melanistic) leopard. Enjoy exclusive twice-daily game drives during which our renowned &Beyond guides will interpret the surroundings, providing guests with an intimate insight into the region.



2

GUIDED NATURE WALKS

Step out of your safari vehicle and experience nature up close on a guided walk through the Suyian Conservancy. Immerse yourself in the remarkable sights and sounds of the region as you discover the conservancy's hidden treasures: elusive creatures, intricate animal tracks, and unique plant life. Or simply relax and take in the breathtaking views from a rocky outcrop, keeping an eye out for the majestic Verreaux's eagle or the playful fan-tailed raven.



3

HORSEBACK RIDING SAFARIS

Accompanied by an expert guide, set out on horseback to uncover the region's hidden gems. Ride across the plateau gaining a unique perspective that allows for intimate encounters with some of Suyian's most iconic species.

Experience required for horseback riding

To be pre-booked at the lodge



4

YOGA SESSIONS

Unwind with daily yoga classes tailored to individual or group preferences. For a more immersive experience, join a sunrise, sunset or full moon session on a natural rock platform nestled among the nearby kopjes.

Scheduled and private sessions available*



5

WELLNESS TREATMENTS

A thoughtful selection of spa therapies and holistic practices draws on natural ingredients and age-old techniques. From deep tissue massage to mindful moments overlooking the plains, each treatment is designed to restore and reconnect.

All experiences are subject to availability

**These experiences are available at an additional cost*

Experiences and highlights



6

CATCH-AND-RELEASE FISHING

Indulge in the thrill of catch-and-release fishing along the Ewaso Narok River or cast your line at the numerous waterholes scattered around the conservancy. For the truly intrepid, a full-day expedition to the legendary Lake Turkana* awaits, promising an unforgettable angling adventure.

Lake Turkana fishing adventure to be booked in advance



7

HELICOPTER FLIGHTS*

A scenic helicopter flight not only provides aerial views of the region's most diverse landscapes, such as Suguta Valley, Ololokwe, and Mt Kenya, but also offers unrivalled access to hidden gems that are both ecologically and culturally significant.



8

ACTIVE RANCHING

What was once an area of huge livestock ranches, today Suyian combines rapidly evolving conservation practices with community development, creating a safe space for people and wildlife to coexist. Spend the morning with Suyian's herders and your guide, walking the cattle on rotational grazing rounds. There are approximately 2 500 to 3 000 cattle that form part of this unique biodiverse ecosystem.



9

LOCAL COMMUNITY VISITS

Visit Suyian Conservancy Headquarters to learn about ongoing research, wildlife protection and land restoration efforts, followed by time in a neighbouring community to see how Suyian supports local livelihoods. Or take part in a cultural visit to a nearby pastoral tribe, where ancient traditions still thrive alongside the wild.



10

CAMEL EXPERIENCE

Meet local herdsman at the camel camp or walk alongside the camels, observing their slow, steady rhythm as they press their padded feet softly into the ground. You may even assist with milking the camels. In this intimate moment, you'll witness the profound connection between humans and animals, forged over generations of nomadic tradition.

DISCOVER SUYIAN CONSERVANCY
Adventures of a Lifetime

Seasonal highlights

Suyian is an exceptional year-round destination, offering unforgettable attractions and experiences every season.

YEAR-ROUND ACTIVITIES

- | | |
|-----------------------------|------------------------------|
| ✓ Twice-daily game drives | ✓ Catch-and-release fishing |
| ✓ Night game drives | ✓ Scenic helicopter flights* |
| ✓ Active ranching* | ✓ Wellness treatments |
| ✓ Camel experience* | ✓ Yoga (group and private) |
| ✓ Horseback riding safaris* | ✓ WILDchild experiences |
| ✓ Local community visits | ✓ Guided nature walks* |

All experiences are subject to availability

**These activities are weather dependent*

CHILD POLICY

Camel experience	16 years and older
Horseback riding safaris	16 years and older
Guided nature walks	16 years and older
Active ranching	16 years and older



DISCOVER SUYIAN CONSERVANCY
Adventures of a Lifetime

A day in the life

OF A GUEST

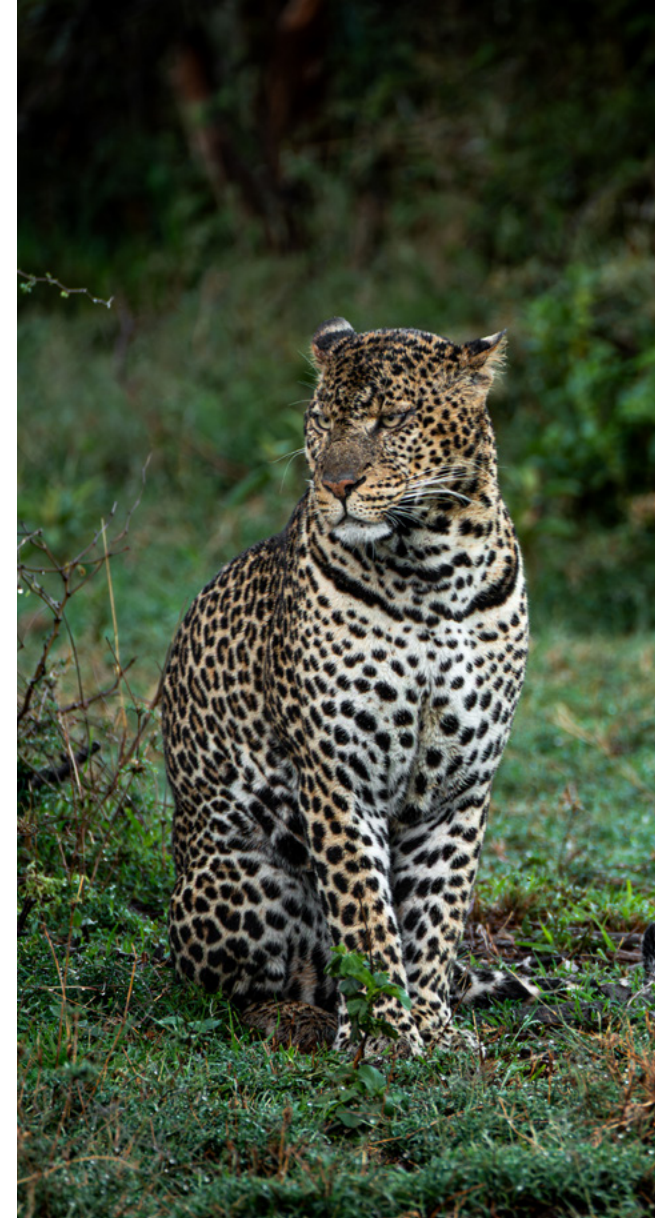
From the moment you wake up, your &Beyond experience is tailored to your interests and needs. Your butler and guide will discuss the day with you, including timings and experiences, ensuring your day is as extraordinary as the location you are visiting. Here is what to expect in a day on safari in Kenya.

TIMING

EXPERIENCE

Early morning	Wake-up call from your butler, with a pre-ordered fresh juice or early-morning tea or coffee
Early morning	Get ready for the day by enjoying a range of early morning activities, from safari game drives and horseback riding safaris to camel experiences and active ranching tours
Morning to mid-morning	Return to the lodge for a delicious breakfast served in the guest area or in the privacy of your suite
Mid-morning to midday	Spend your morning at leisure, or choose between a guided nature walk and a scenic helicopter flight
Midday to mid-afternoon	Savour lunch at your convenience either on the lodge deck or by the pool
Mid-afternoon	Head out on a local community visit, or enjoy a gentle yoga class, wellness treatment or gym session
Mid-afternoon to late afternoon	Indulge in afternoon tea, sipping on chai brewed over the Aga stove in the lodge's house kitchen, accompanied by a curated selection of sweet and savoury delights
Late afternoon	Explore the conservancy on an afternoon to evening safari game drive* <i>*Afternoon game drives can easily be extended into an exciting night game drive – please keep in mind all guests must be back at the lodge no later than 21h00</i>
Evening	Reminisce about the day over dinner, served in the guest area, by the lodge pool or in the house kitchen

*Timings and guest experiences are guidelines only
Some experiences are at an additional cost and weather dependent*





5 BEYOND



#seewhatliesbeyond

andBeyond.com