



&BEYOND

DISCOVER THE OKAVANGO DELTA

# &Beyond Sandibe Under Canvas

An intimate, under-canvas camp set in one of  
Botswana's most predator-rich concessions.



DISCOVER THE OKAVANGO DELTA  
Beyond Sandibe Under Canvas

# Why stay?

## 1 PRIVACY, PERFECTED

With just three tents on the Sandibe private concession, this is one of the most intimate camps in the Beyond portfolio. Hosting a maximum of six guests, every moment in camp feels personal, rare, and completely your own.

## 2 UNRIVALLED PREDATOR ACTION

Set within 22 500 hectares (55 600 acres) of Big Five wilderness, this private concession is known for year-round predator and big game sightings. With exclusive traversing rights and expert Beyond guides, every safari game drive reveals something unforgettable – often within minutes of camp.

## 3 COMFORT COMES NATURALLY

This is low-footprint luxury in practice: hot running water, fans, Wi-Fi and limited laundry, all considered carefully and provided without excess.

## 4 DEEP IN THE WILD

This is predator country – raw, real and deeply immersive. There's no buffer between you and the Delta's heartbeat. At night, lions may call close by. By day, you'll feel the thrill of tracking game through some of Botswana's most sought-after terrain.

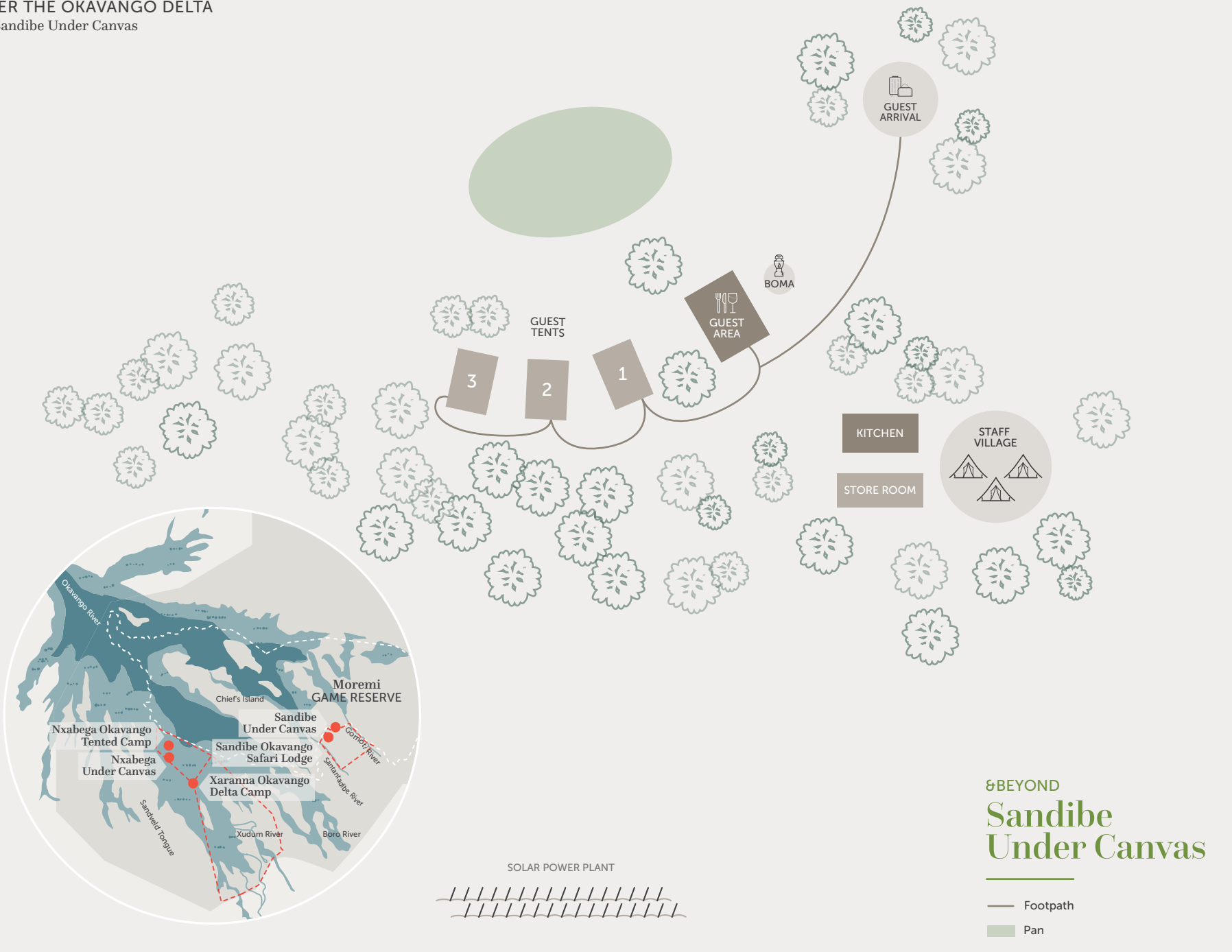
## 5 DINNER UNDER A SKY FULL OF STARS

Here, dining is a ritual of connection. Meals are freshly prepared over an open fire and shared around it – under stars, beside stories, and always with the wild close by.



# DISCOVER THE OKAVANGO DELTA

&Beyond Sandibe Under Canvas



DISCOVER THE OKAVANGO DELTA  
&Beyond Sandibe Under Canvas

# Camp amenities



1

## THE &BEYOND WAY

Spacious open-sided tents serve as relaxed communal areas for dining, drinks, or simply soaking in the wild between game drives. A personalised butler service and well-stocked bar add quiet indulgence without breaking the bush rhythm.



2

## SAFARI ESSENTIALS

Every tent receives a complimentary pair of SWAROVSKI OPTIK CL Companion 8x30 to use during their stay, along with a take-home Guides' Journal – complete with wildlife and birding checklists, Okavango Delta maps, and space to track your own sightings.



3

## SLOWS YOU DOWN

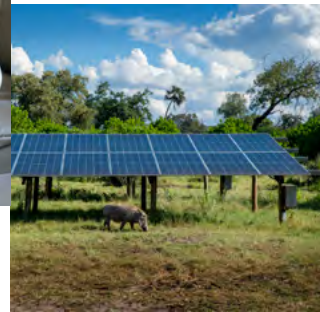
Meals are cooked over an open fire and served al fresco – unrushed, under stars, and in harmony with the day's pace.



4

## STAY CHARGED

All 4x4 safari vehicles are custom-designed with 12V charging units and USB ports, ensuring your devices are powered and ready – whether for photos, navigation, or stargazing apps.



5

## TREAD LIGHTLY

Built for impermanence and designed to leave no trace, the semi-permanent camp operates entirely off-grid, powered by its own solar plant. With no permanent structures and a deliberately light footprint, every detail is crafted to minimise impact while maximising immersion in the wild.



6

## SOUNDS OF THE WILD

With no fences and no barriers, the bush is always present. Drift to sleep with lions calling in the distance, hyenas whooping nearby, or the soft rustle of elephants passing through. Here, nature doesn't visit – it surrounds.

DISCOVER THE OKAVANGO DELTA  
Beyond Sandibe Under Canvas

# Camp overview

## CAMP

Maximum number of guests	6
Number of rooms	3
Room types	Tents
Family accommodation	Children 12 years and older only No triple Tents All double Tents can be converted to twin
WILDchild programme	No
Child policy	Children 12 years and older only
Pilot / Guide accommodation	No
Distance between rooms	10 m (32 ft) Tents are located to optimise space available per campsite
Check-in / Check-out times	14h00 / 11h00, with early check-in and late check-out on request

## DINING

Food / Dietary options	Halal and kosher food not available
Butler service	Yes
Family-style dining	Yes, shared meals around the fire or dining table
Private dining	Yes, on request

## PAYMENT TYPES ACCEPTED

Currency	All major currencies accepted
----------	-------------------------------

## FACILITIES

Power	12V charging units and USB ports on 4x4 safari vehicles Solar powered lamps and plug points in tents
Internet access	Yes, Wi-Fi
Running water	Yes
Outdoor dining	Yes
Bar	Yes, well-stocked bar
Wheelchair accessibility	No
Laundry service	Yes, limited Guests are also provided soap suds to do their own laundry
Beyond Safari Shop	No

## OTHER

Vehicle type	Semi-open 4x4 safari vehicle with fridge and 12V charging units and USB ports Max. 6 guests per vehicle
Private 4x4 safari vehicle	No

DISCOVER THE OKAVANGO DELTA  
 Beyond Sandibe Under Canvas

# Inclusions

## RATE INCLUDES

Accommodation	✓
Three meals daily	✓
Soft drinks, house wines, local brand spirits and beers, tea and coffee, and refreshments on safari game drives	✓
Safari experiences: Safari game drives, walking safaris, stargazing and birding	✓
One complimentary pair of SWAROVSKI OPTIK CL Companion 8x30 per tent to share during your stay	✓
Guides' Journal with illustrations of fauna and flora to record your sightings	✓
Area map with illustrated Star Birds checklist	✓
Emergency medical evacuation insurance	✓
VAT	✓
Limited laundry	✓

## RATE EXCLUDES

Administration fees	✗
Telephone calls	✗
All items of personal nature	✗
Gratuities	✗
Champagne, cognacs, fine wines, premium brand spirits and cigars	✗
Landing fees	✗
Travel Insurance	✗
Scenic helicopter flights	✗



**NOTE: Unmanned Aerial Vehicles:** Please be advised that the use of unmanned aerial vehicles (drones) is prohibited in the conservation areas where we operate, until such a time as their impact on wildlife and anti-poaching initiatives can be assessed. This rule will apply throughout Africa, as our partners in various countries and regions have adopted a similar stance.



8 BEYOND

8 BEYOND SANDIBE UNDER CANVAS

# Tents

DISCOVER THE OKAVANGO DELTA  
& Beyond Sandibe Under Canvas Accommodation

# Front-row seat to the untamed

With only three spacious canvas tents, Sandibe Under Canvas offers an experience that is both exclusive and immersive. Each tent includes an ensuite bathroom with a flushing toilet and a steaming hot shower, providing comfort without detracting from the wilderness experience.



DISCOVER THE OKAVANGO DELTA  
 Beyond Sandibe Under Canvas Accommodation

# TENT

3 Tents / Max. 2 guests per Tent

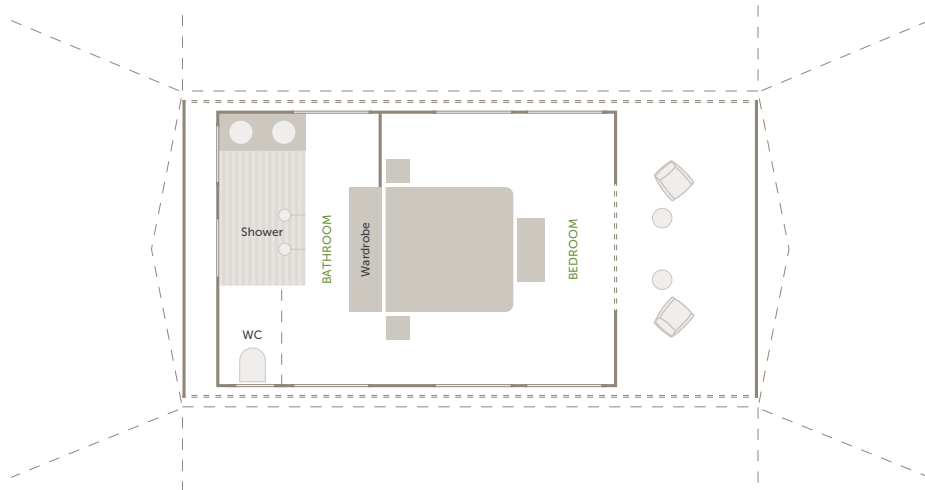


## CANVAS THAT DISAPPEARS INTO THE WILD

Each tent is thoughtfully designed to bring you closer to nature, with minimal impact on the land and every comfort considered. Enjoy a private veranda, a steaming indoor shower, and an ensuite bathroom with a separate flushing toilet.

## ROOM FACILITIES

Tent size	Approx. 29.16 m <sup>2</sup> (314 ft <sup>2</sup> )
Private veranda	Yes, 9 m <sup>2</sup> (97 ft <sup>2</sup> )
Personal bar	No, but the camp has a well-stocked bar
Standing fans	Yes
Mosquito nets	No, however, tents are fully netted
Bath	No
Indoor shower	Yes
Outdoor shower	No
Separate WC	Yes, separate flushing WC
Telephone	No
Hairdryer	No
Internet access	Yes, Wi-Fi
In-room safe	Yes
Power	Yes, solar powered lamps and plug points in tents
Triple bed option	No
Twin bed option	Yes, however, beds are within the same bedframe All double tents can be converted to twin
Double bed option	Yes
Wheelchair accessibility	No



Typical Tent layout



BEYOND

DISCOVER THE OKAVANGO DELTA

# Adventures of a lifetime

Celebrated for its winding waterways, glassy lagoons and remote islands teeming with wildlife, it's no surprise that nature lovers flock to the Delta.

DISCOVER THE OKAVANGO DELTA  
Adventures of a Lifetime

# Land and sky experiences

A safari in Botswana is a breathtaking experience, and in the Okavango Delta, it is defined by land and water – a place where flood and drought reshape the land and concentrate life in remarkable ways.



## 1

### SAFARI GAME DRIVE

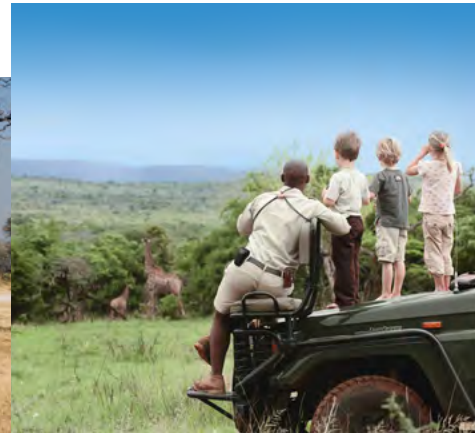
Enjoy twice-daily game drives that set off early in the morning or late in the afternoon (continuing after nightfall), in the company of local guides who will do their best to ensure that all your wishes are met. You will be encouraged not only to go in search of the Big Five, but also to appreciate the wonderful array of flora and fauna dotted across the Okavango Delta.



## 2

### WALKING SAFARI

If you're looking for a thrilling view from the ground, this is your chance to discover a multitude of natural wonders in the company of your experienced safari guide. Tread in the tracks of the Delta wildlife, breathe in the scent of crushed wild grasses, and feel your senses stir.



## 3

### FAMILY SAFARI

8Beyond offers a host of entertaining activities for children, bringing alive the magic of Botswana. While on a family safari, you can rest assured that your children will always be safe and well cared for (both during activities and at the lodge). Every minute is supervised by our guides and lodge staff, who provide hours of amusement and invaluable information to the children in their care.

*Not available at 8Beyond Sandibe or Nxabega Under Canvas*



## 4

### PRIVATE SAFARI

Tailored especially for you, this exclusive safari allows you to explore the Delta with your very own dedicated guides and vehicle. Game drives can be as long or as short as you wish, covering your personal interests, from the insect kingdom to great herds of buffalo or prides of lion. Meals can be savoured at the camp, or alternatively, enjoyed away from the lodge.

*Not available at 8Beyond Sandibe or Nxabega Under Canvas*

DISCOVER THE OKAVANGO DELTA  
Adventures of a Lifetime

---

# Land and sky experiences



# 5

## PHOTOGRAPHY

Our expert guides will use their extensive experience in wildlife behaviour to try to get you into the best position for the shot of a lifetime. At 8Beyond Sandibe Okavango Safari Lodge, our customisable vehicles come with charging points for camera equipment and camera bean bags on clamps, providing excellent support for any camera and lens combination.

---



# 6

## SCENIC HELICOPTER FLIGHT

Take to the skies for a bird's-eye view over the Okavango Delta's signature of blue waters against the green and brown tapestry of papyrus-fringed islands and open floodplains. From these heights, even those far-flung and inaccessible corners of the Delta can be seen, fully showcasing the incredible diversity of landscapes and wildlife.

---

*At an additional cost*



# 7

## STARGAZING

Gaze at the Southern Hemisphere's night skies in complete awe. With little to no light pollution in the area, you will be amazed by what is above. Take a closer look at the planets and constellations with your guide while out on a drive, or sit out on your private deck at night and see if you are able to spot a lucky shooting star.

---



# 8

## BIRDING

Botswana is a top African birding destination, with the waters in the Okavango offering great year-round diversity. Guests flock to the area in search of several specials such as Pel's fishing owl, African pygmy goose, lesser jacana and slaty egret, to mention just a few. Our knowledgeable guides enjoy the challenge of finding your particular favourites.

---

DISCOVER THE OKAVANGO DELTA  
Adventures of a Lifetime

# Impact experiences

Everything we do at ♻️Beyond is centred around our core ethos of 'Care of the Land, Wildlife and People!'



# 1

## COMMUNITY VISIT

Enquire about this community excursion to the Sexaxa Village, outside of Maun. On the day of your departure, visit Sexaxa School for a closer look at the community-led initiatives supported by Wild Impact\*, in partnership with ♻️Beyond. It is with our guests' support that this inspiring project has flourished, and now young children no longer need to walk a total of 10 km (6 mi) to get to and from school each day. Please note that this excursion depends on your departure time.



# 2

## BEHIND-THE-SCENES SUSTAINABILITY TOUR

Across the Delta, sustainability initiatives have been integrated into our daily operations. These include the installation of the first solar power plant at ♻️Beyond Sandibe in 2014, as well as a solar photovoltaic (PV) hybrid system at ♻️Beyond Xaranna – the first of its kind in Botswana – incorporating Tesla Powerpack Battery Energy Storage System technology. Complemented by energy audits, efficient heating systems, water bottling plants and wastewater management, these measures contribute to a reduced carbon footprint.



# 3

## LOCAL CRAFTS

Browse through our Safari Shops at ♻️Beyond Sandibe Okavango Safari Lodge, Nxabega Okavango Tented Camp and Xaranna Okavango Delta Camp and expect to find a range of quality, handpicked handicrafts and fashion that showcases the very best of Botswana. Peruse their range of excellent eco-souvenirs; a portion of your purchase will support local community or conservation initiatives.

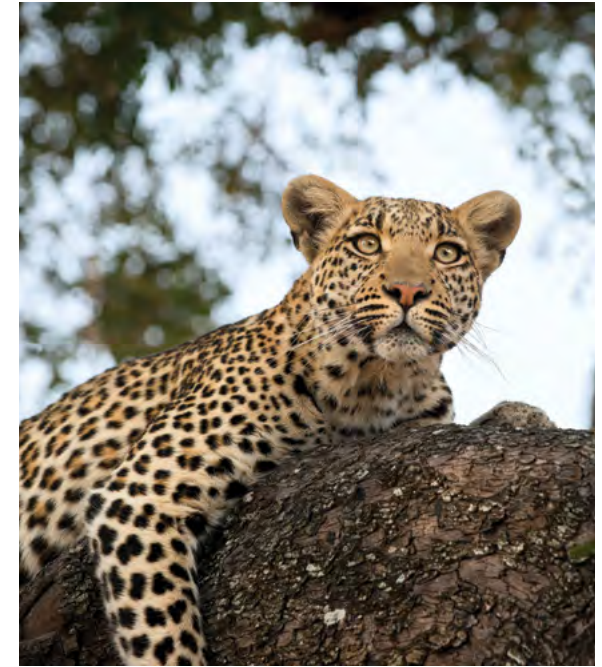
DISCOVER THE OKAVANGO DELTA  
Adventures of a Lifetime

# Seasonal highlights

## YEAR-ROUND ACTIVITIES

- |                     |                             |                                     |
|---------------------|-----------------------------|-------------------------------------|
| ✓ Safari game drive | ✓ Photography               | ✓ Wellness treatments*              |
| ✓ Walking safari    | ✓ Scenic helicopter flight* | ✓ Wild Impact community visit       |
| ✓ Family safari     | ✓ Stargazing                | ✓ Back-of-house sustainability tour |
| ✓ Private safari*   | ✓ Birding                   |                                     |

\*This activity is at an additional cost



## TIMING IS EVERYTHING

	JAN	FEB	MAR	APR	MAY	JUN	JUL	AUG	SEP	OCT	NOV	DEC
Mokoro adventure	X	X	X	X	Nxa, NUC & Xar	Nxa, NUC & Xar	Nxa, NUC & Xar	Nxa, NUC & Xar	Nxa, NUC & Xar	X	X	X
Motorised boat cruise	X	X	X	X	Nxa & Xar	Nxa & Xar	Nxa & Xar	Nxa & Xar	Nxa & Xar	X	X	X
Catch-and-release fishing	X	X	X	Nxa & NUC	Nxa & NUC	Nxa, NUC & Xar	Nxa, NUC & Xar	Nxa, NUC & Xar	Nxa, NUC & Xar	Nxa & NUC	Nxa & NUC	Nxa & NUC

### KEY

Nxa: &Beyond Nxabega Okavango Tented Camp

NUC: &Beyond Nxabega Under Canvas

Xar: &Beyond Xaranna Okavango Delta Camp

X: Not available

*This information is given based on data and can only be used as a reference because water levels change annually. Weather patterns are unpredictable.*

**It is fair to say that we have been mind-blown by the overall experience. We loved it all and really felt like family.**



&BEYOND GUEST

## DISCOVER THE OKAVANGO DELTA

Adventures of a Lifetime

# A day in the life

OF A GUEST

From the moment you wake up, your &Beyond experience is tailored to your interests and needs. Your butler and guide will discuss the day with you, including times and experiences, to ensure your day is as extraordinary as the location you are visiting. Here's what to expect on a typical day in the Okavango Delta.

### TIMING

### EXPERIENCE

Early morning	Early wake-up call from your butler with your favourite morning beverage of choice Once you're ready for day, your guide will collect you from your suite or tent for breakfast in the main guest area
Morning to midday	Head out for a morning game drive with a tea and coffee stop
Midday to mid-afternoon	Back at the lodge or camp, tuck into a hearty lunch after an exciting morning Afterwards, relax and soak in the atmosphere of your surroundings at your own pace
Mid-afternoon	Savour High Tea before your next game drive
Late afternoon to early evening	Head out on an afternoon to early evening game drive with sundowners and snacks
Evening	Sip on your preferred pre-dinner drink of choice before dinner in the main guest area

*Timings and guest experiences are guidelines only.*

*All experiences are subject to availability and weather dependent. Some experiences are at an additional cost.*



# Sustainability initiatives

Our work is carried out in partnership with Wild Impact\*, our long-standing community and conservation development partner.



## CARE OF Land

- 155 856 plastic water bottles eliminated per year in Botswana as a result of on-site lodge bottling plants
- 2 670 tons of concrete removed from the Okavango Delta
- Hybrid solar power plant systems in operation at our Botswana lodges have the capacity to supply up to 80% of the lodges' energy requirements
- Our Sandibe solar power plant (installed in 2014) was the first of its kind in Botswana, and the second on the African continent
- Nxabega and Xaranna lodges utilise the cutting edge Tesla Powerpack system
- All our Botswana lodges have sophisticated, environment-friendly above-ground wastewater treatment systems
- Progressive reduction of our direct carbon footprint through a system of Group goals, measured by annual lodge audits



## CARE OF Wildlife

- Long-term support of the WildCRU Trans-Kalahari Predator Programme, based out of the University of Oxford, which aims to identify and protect wildlife corridors in Botswana
- Support of the Botswana Predator Conservation Trust with their African Wild Dog Dispersal Study – a project that is fundamental to the management and conservation of this endangered species
- Rhinos Without Borders – a collaboration between ♻️Beyond and Great Plains Conservation – has translocated 93 rhino from South Africa to Botswana, with the new source population now numbering well over the target of 100. The significant number of calves born is testimony to the success of this conservation initiative



## CARE OF People

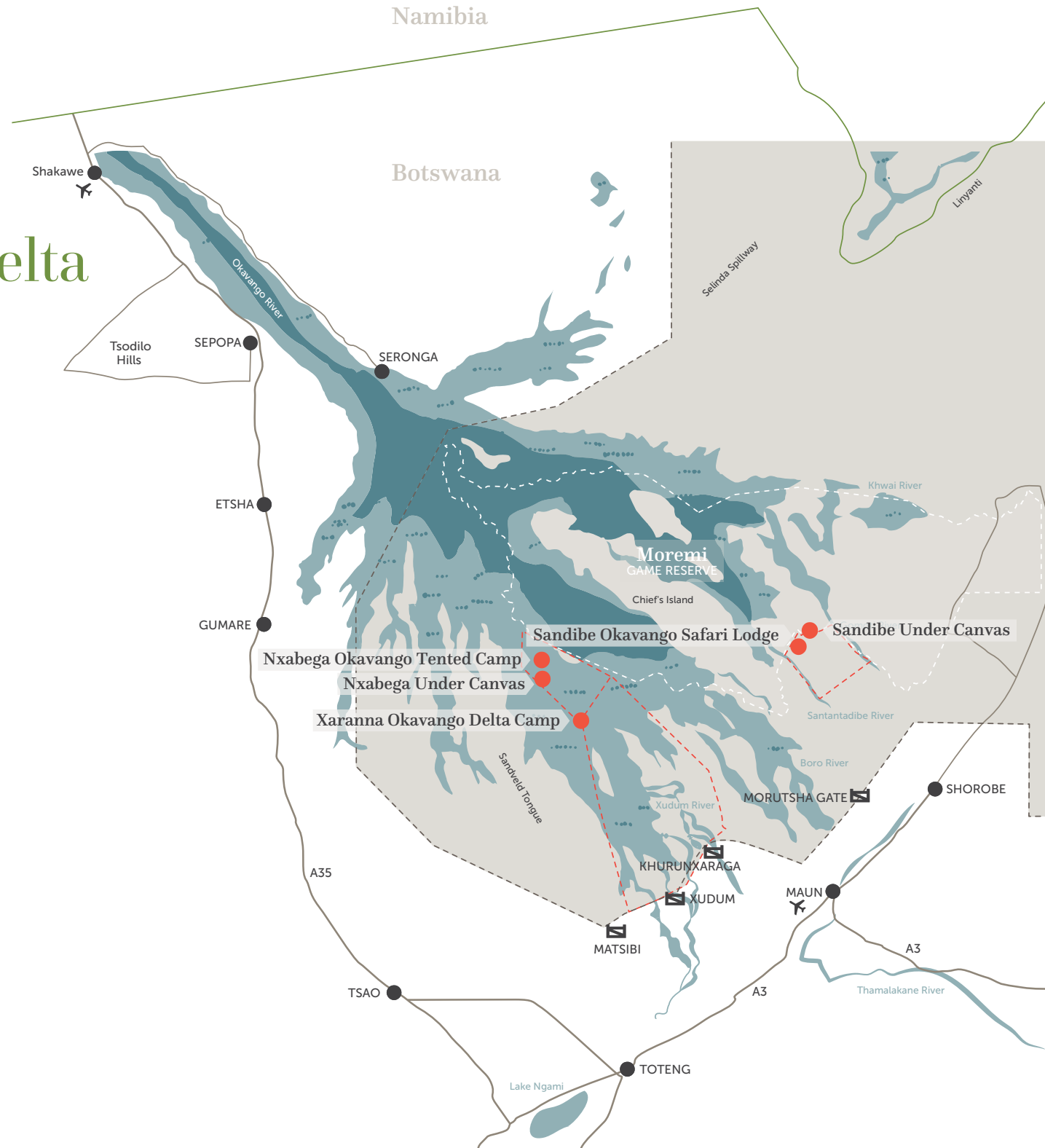
- 94% of our staff complement are local Botswana citizens; an average of over 100 training interventions annually
- 89% of our Botswana lodge operational expenses currently support local businesses
- The phased development of the Sexaxa Primary School, 2012 – 2020, a long-term commitment by Wild Impact and ♻️Beyond to a community-identified project
- Wild Impact's CLEF (Community Leaders Education Fund) tertiary bursary programme was introduced in 2019, with 6 bursaries granted to 5 rural students to date
- Two new boreholes installed, providing a stable source of clean water to the isolated communities of Gogomoga and Tsutsubega
- Our COVID-19 impact and response: total of BWP 393,073 raised to support water access, food relief and masks for school children

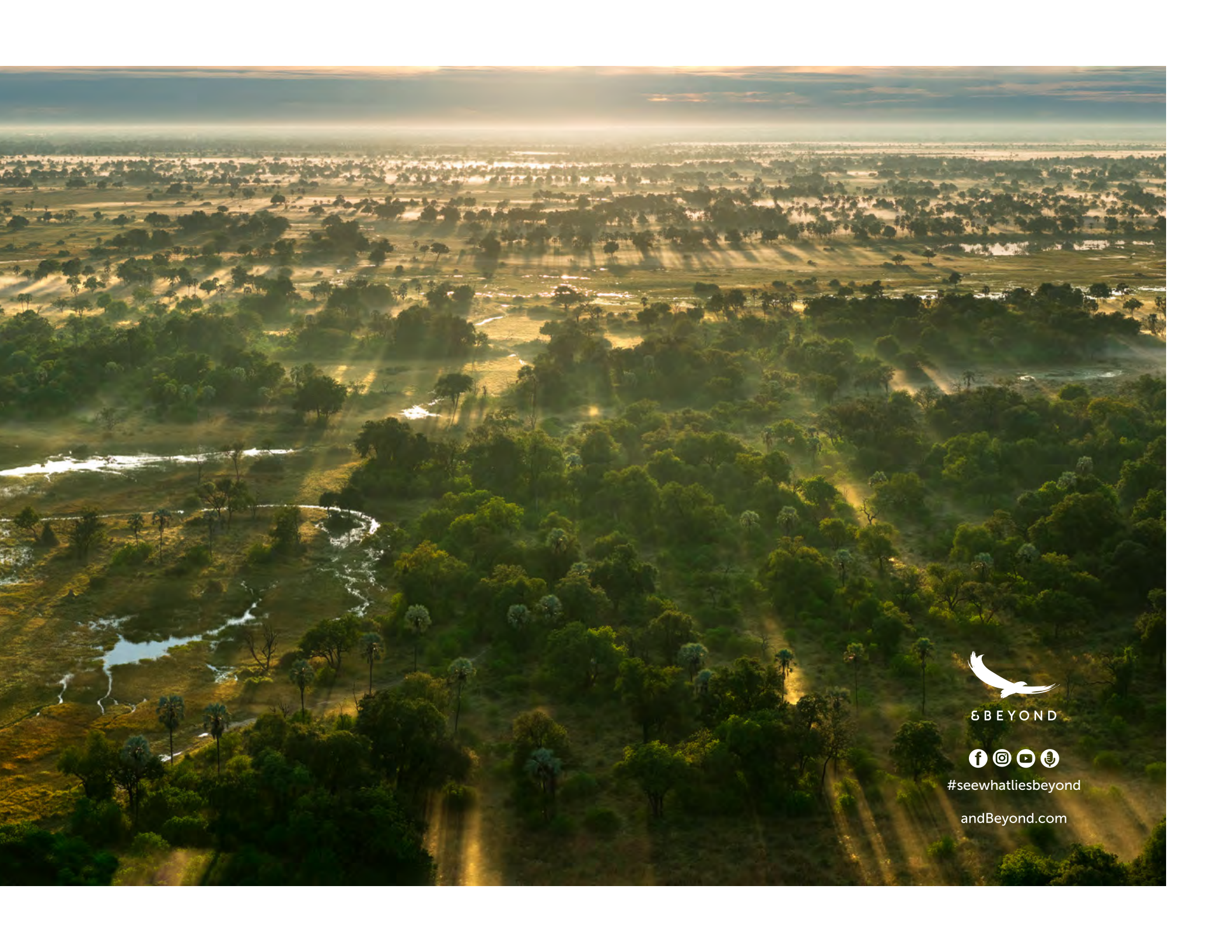
\*Formerly Africa Foundation

# Explore the Okavango Delta

This is a place where land and water blur, creating one of Africa's most extraordinary ecosystems.

- Permanent water
- Seasonal water
- Private concession
- River
- BEYOND Lodge
- Town / Village
- Main road
- Secondary road
- BEYOND concession
- Country border
- Buffalo fence
- Gate
- Airport





BEYOND



#seewhatliesbeyond

andBeyond.com