

LOCATION & ACCESS

Throughout the year, TAASA Migration Camp relocates to different areas of the Serengeti to offer the best wildlife viewing experience for each season:

Dry Season: Kogatende

Experience the awe-inspiring Great Migration! TAASA moves to Kogatende, perfectly positioned for prime viewing of the massive herds of wildebeest and zebra concentrated around water sources during this classic safari season. This is also the best time of year to witness the Mara River crossing!

Dates: 4 July - 31 October 2025 / 9 July - 31 October 2026

Access: Kogatende Airstrip Site: 1°40'24"S 35°00'48"E

Green Season: Ndutu

Witness the miracle of life! TAASA moves to Ndutu in the lush green Southern Serengeti, where you can spot newborn wildebeest during the calving season.

Dates: 1 December 2025 - 31 March 2026 / 23 November 2026 - 31 March 2027

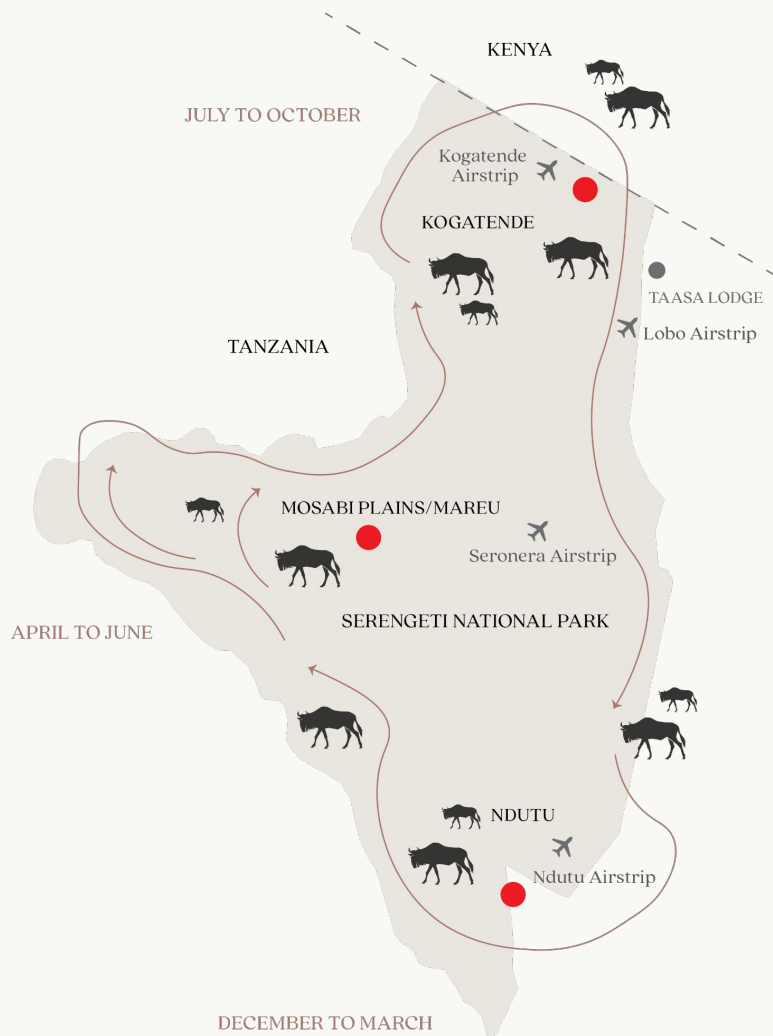
Access: Ndutu Airstrip Site: 2°58'31"S 34°57'00"E

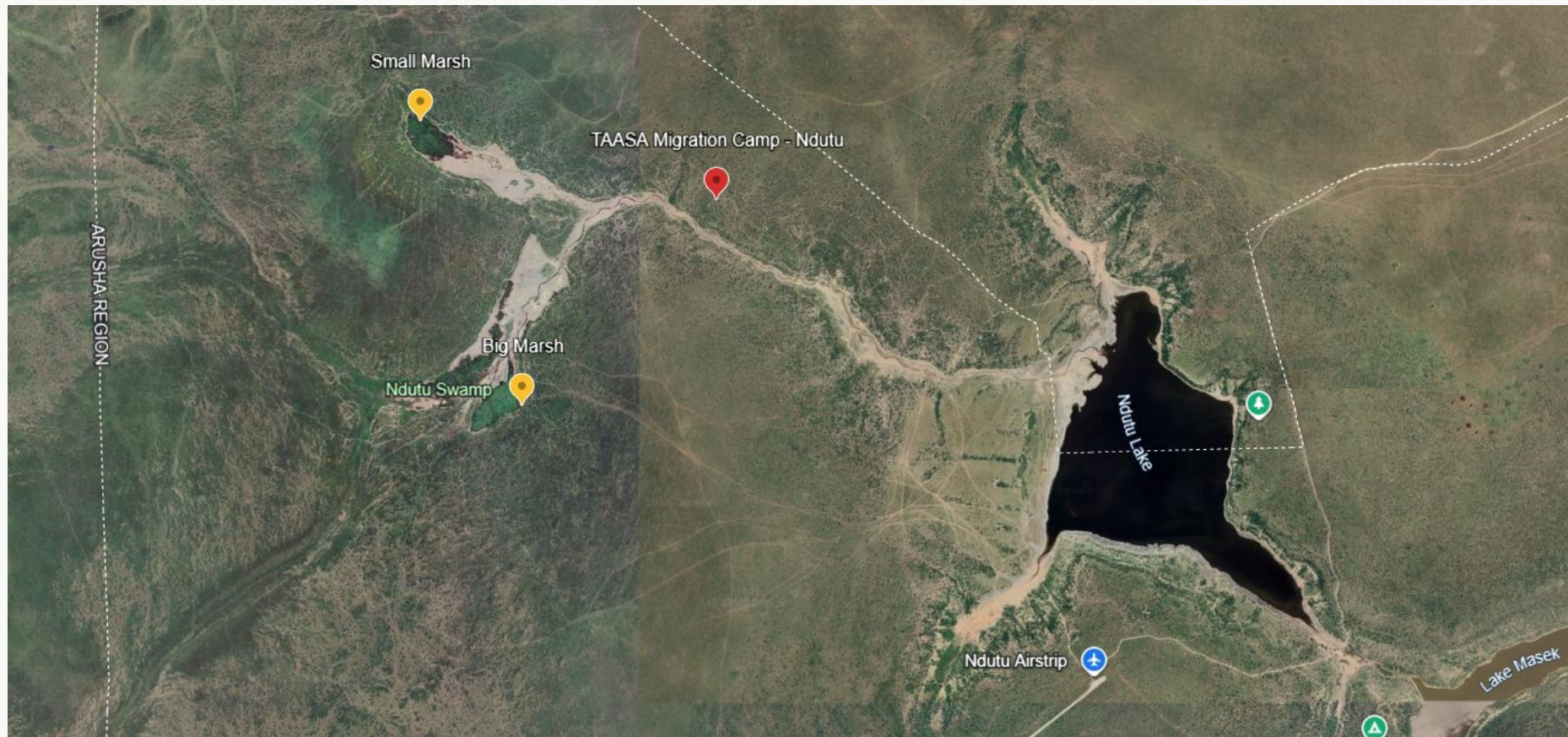
Shoulder Season: Central (Mosabi Plains/Mareu)

The Serengeti bursts with vibrant life during the wet season. TAASA sets up camp in Mosabi Plains/Mareu area, where you can witness the beauty of the rejuvenated landscape and possibly see some of the young animals born earlier in the year.

Dates: 1 May - 22 June 2026

Access: Seronera Airstrip





Site Location: TAASA Migration Camp - Ndutu

Dates: 1 December 2025 - 31 March 2026 / 23 November 2026 - 31 March 2027

Flight Access: Ndutu Airstrip - approximately 45 min drive to camp
Site Coordinates: 2°58'31"S 34°57'00"E



Site Location: TAASA Migration Camp - Kogatende

Dates: 4 July - 31 October 2025 / 9 July - 31 October 2026

Flight Access: Kogatende Airstrip - approximately 1 hr drive to camp

Site Coordinates: 1°40'24"S 35°00'48"E