



# KITIRUA PLAINS LODGE

AN A&K SANCTUARY

*Amboseli National Park, Kenya*



*The plains near Mount Kilimanjaro are elephant country*

## A new sanctuary in the shadow of Mount Kilimanjaro

Amboseli National Park enjoys near-mythic status among wildlife lovers, thanks to its position in the foothills north of Mount Kilimanjaro, the particular grandeur of its landscape and the vast herds of elephants that inhabit it. Experience this unique location at Kitirua Plains Lodge, a brand-new property carefully constructed in a 128-acre private concession adjoining the park. Its design is at once strikingly innovative and deeply rooted in the elements of its environment, inspired by Maasai principles of living in harmony with nature. The lodge is currently accepting reservations for June 1, 2026 and beyond.

# Six Reasons to Choose Kitirua Plains Lodge



01



*Follow the herd in Amboseli National Park*

This is elephant country – vast herds roam freely, alongside lions, buffalos and other plains game.

02



*Witness the wildlife in a private concession*

Set within a private concession, you have access to thriving wildlife, with fewer vehicles.

03



*The view from a suite at Kitirua Plains Lodge*

An innovative, eco-conscious lodge where contemporary flair meets traditional craftsmanship.

04



*Spend time with the Maasai community*

Time spent with the local Maasai offers a rare window into a proud, living cultural heritage.

05



*The spa has double treatment rooms*

After game drives, unwind in the infinity pool and enjoy a relaxing spa treatment.

06



*Mighty Mount Kilimanjaro is ever-present*

The snow-dusted summit of Mount Kilimanjaro rises on the horizon, a majestic presence at dawn and dusk.

# The Lodge



As nomadic stewards of the land, the Maasai have long understood how to exist alongside nature without disrupting it, a philosophy deeply embedded in the design of Kitirua Plains Lodge. Newly built in 2025-26, it is not only the latest addition to the A&K Sanctuary portfolio but also one of the most architecturally arresting — conceived not to mimic its environment but to meld unobtrusively with it. Curved walls and fluid rooflines echo the undulating terrain and the exterior plaster is blended with soil from the site to create harmony in texture and color. Even the pool, flanked by an earth-toned terrace of day beds, sits neatly within a patch of existing wetland.

Though you can marvel at the imperious Mount Kilimanjaro from your bed (or from your bath, for that matter), you will get even closer on daily game drives where it serves as the impossibly photogenic backdrop for herds of strolling elephants and other local wildlife. Make some time for a spectacular hot-air balloon ride and get closer still — your lodge all but disappearing into the plains below as you ascend.

*Kitirua Plains Lodge's spa is a serene sanctuary*



*"Innovation meets eco-conscious architecture at this striking new hideaway."*



*The new lodge features a sublime design.*

# The Lodge



## EXPLORER'S LOUNGE

A cerebral retreat for those drawn to discovery and reflection. Featuring a dedicated Map Room, this thoughtfully curated space includes archival maps, field guides and regional artifacts, offering guests the opportunity to explore the area's natural history and culture.

## BAR

The bar is a relaxed yet refined gathering place, where you can enjoy signature cocktails and locally inspired drinks. Unwind after a day on safari and share stories over a drink before dinner, with views that stretch into the wild.

## SWIMMING POOL

The swimming pool blends seamlessly into the natural landscape and offers an escape with uninterrupted views of the surrounding wilderness. Enjoy a refreshing break between game drives and take in the sights and sounds of the bush.

## BUSH BOUTIQUE

The Bush Boutique offers a curated selection of locally crafted items, from artisanal jewelry to unique keepsakes. The boutique allows guests to take home a tangible connection to the land and its people.

## SPA AND WELLNESS

The wellness area is a serene sanctuary for relaxation, designed with single and double treatment rooms, pedicure stations, and relaxation beds that overlook the plains. A gym and open-air yoga deck, located just beyond, invite you to practise in harmony with nature.

## TRADITIONAL BOMA

The open-air boma provides a captivating setting for guests to gather under the stars. Designed for shared dinners, fireside drinks and storytelling beneath the African night sky, the boma fosters a sense of community and connection.

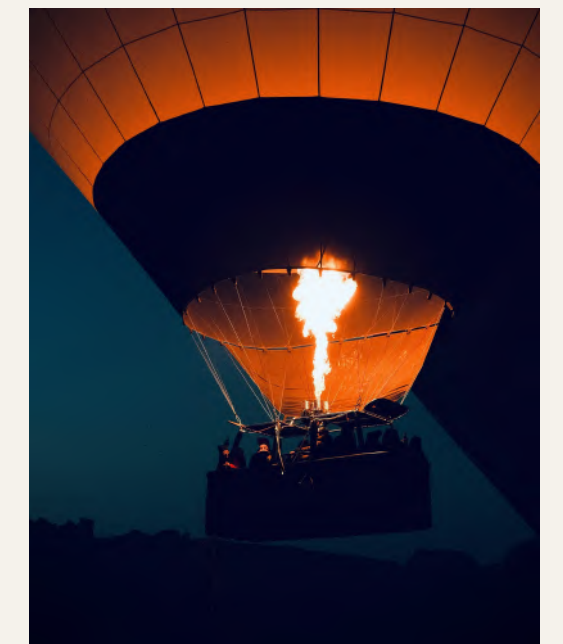


CLOCKWISE FROM LEFT

*An elephant roams the savannah*

*The pool overlooks grazing wildlife*

*Take a ride in a hot-air balloon*



# The Lodge



*A sublime natural setting*

*The brilliantly curated Map Room*

GPS Coordinates	GPS 2° 41' 28.3848" S, 37° 9' 43.3332" E
Open Year Round	Yes
Number of Rooms	11 Suites, 2 Two-Bedroom Suites
Maximum Number of Guests	26
Child Policy	Children of all ages welcome. Children under 15 must share with an adult
Guide/Pilot Accommodation	Yes; 1
Wheelchair Accessible	Limited Access
Power Supply	Solar power with backup generator and inverter systems
WiFi Available	Yes, in all areas
Binoculars Provided	Yes; Leica binoculars provided for every guest
Lodge Fenced	No
Credit Cards Accepted	Visa, MasterCard
Currencies Accepted	USD, Pound, Euro and Kenyan Shillings
Swimming Pool	Yes
Spa/Treatment Room	Yes

# The Suites



From each of the 11 cleverly crafted contemporary suites, Mount Kilimanjaro is perfectly framed — you can enjoy unobstructed views from the comfort of your bed each morning. As the day unfolds and the mountain retreats behind the clouds, attention shifts to the open plains, where wildlife drifts quietly across the landscape. If you are not out among it, you can observe it from the serenity of your own shaded veranda.

*Natural light floods into the bathroom*

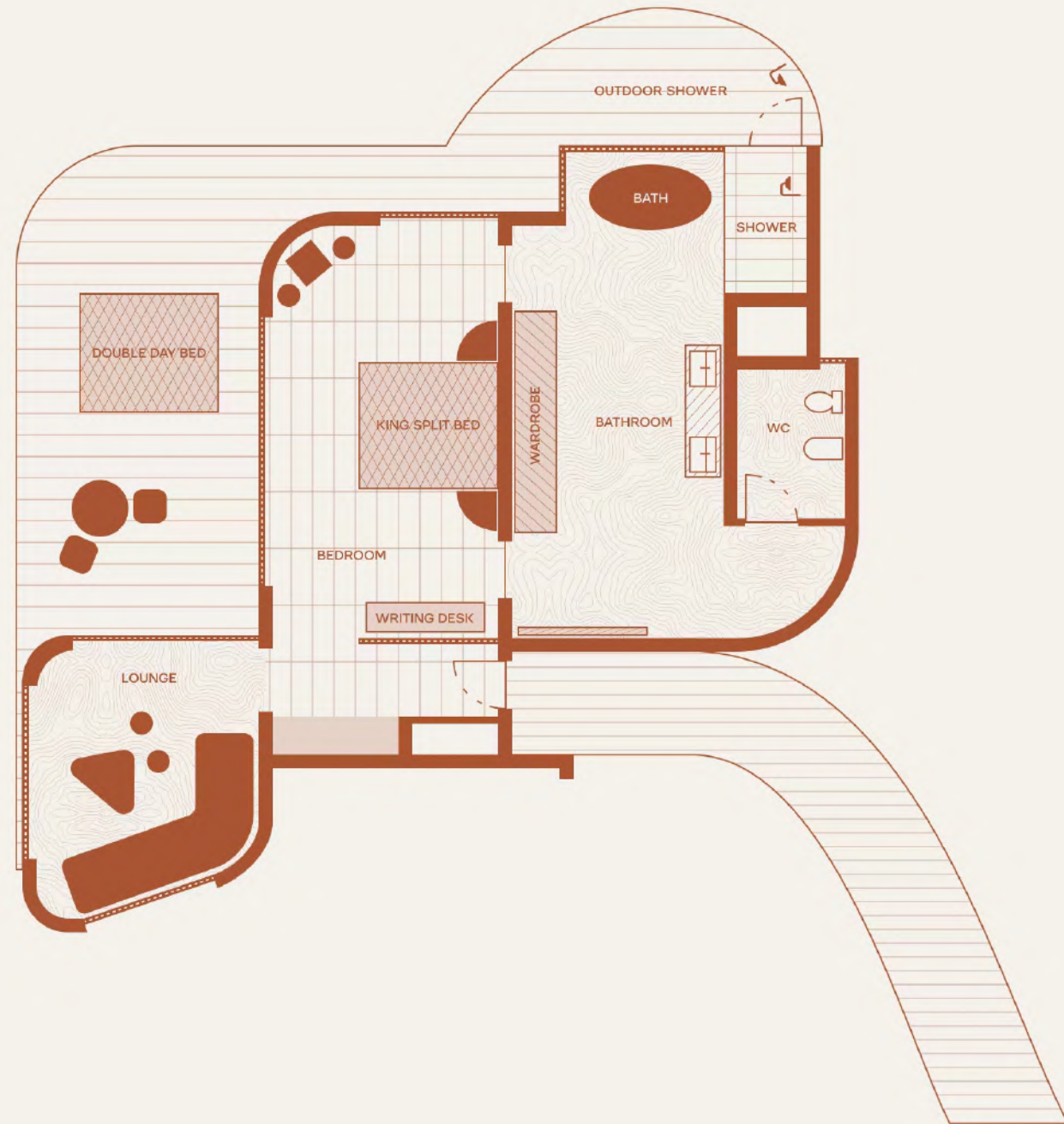


*"The design ethos of being in harmony with nature extends to the soft, natural palette."*



*A stylishly crafted suite interior*

# The Suites



## SUITE | SLEEPS 2 | 116 SQM

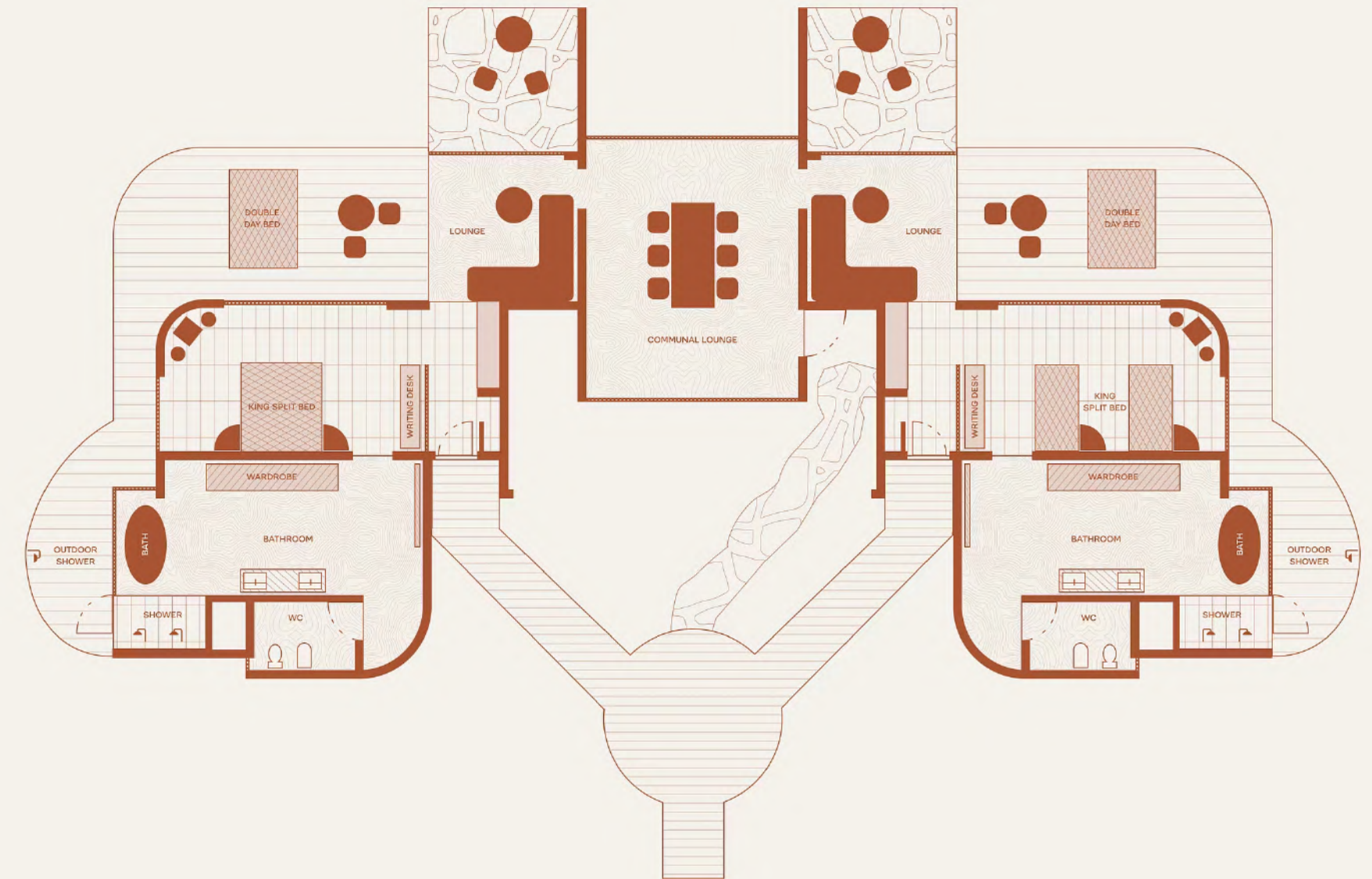
Each one-bedroom suite is a serene refuge; tall glass walls frame Kilimanjaro and plains views, with soft textures, natural light, refined furnishings and a spacious shaded veranda to sit back and watch wildlife drift past.

Room Size	116m2
Bed Configuration (King or Twin)	All rooms can be converted to a king or twins
Triple Rooms Available	Yes; subject to availability
Mini Bar	Yes
Tea and Coffee Station	Yes
Air Conditioning	Yes
Overhead Fan	Yes
Mosquito Net	Yes
Plug Type	Type G Plug, USB and USB Type C
Bath	Yes
Indoor Shower	Yes
Outdoor Shower	Yes
Hairdryer	Yes
Bidet	Yes

# The Two-Bedroom Suites



Room Size	242m2
Bed Configuration (King or Twin)	All rooms can be converted to a king or twins
Triple Rooms Available	No
Mini Bar	Yes
Tea and Coffee Station	Yes
Air Conditioning	Yes
Overhead Fan	Yes
Mosquito Net	Yes
Plug Type	Type G Plug, USB and USB Type C
Bath	Yes
Indoor Shower	Yes
Outdoor Shower	Yes
Hairdryer	Yes
Bidet	Yes



## TWO-BEDROOM SUITE | SLEEPS 4 | 242 SQM

This family villa links two luxurious bedrooms by an open-air dining courtyard, perfect for shared moments, private al fresco meals and sweeping views across Amboseli's plains.



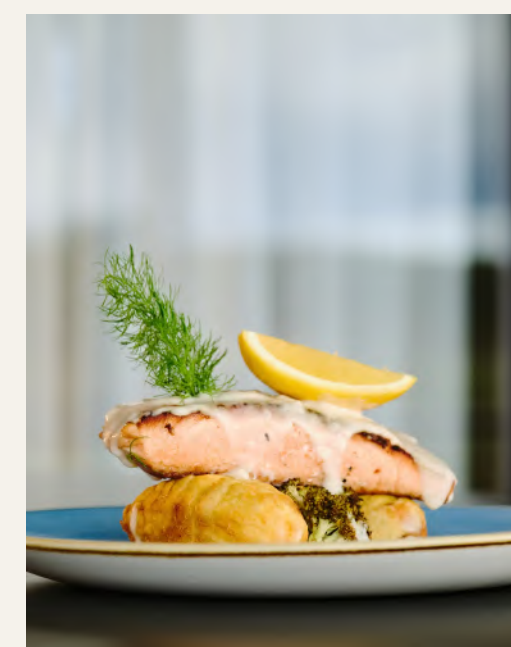
# Food & Drink



An open-fronted bar and dining area, rich in pale wood and neutral tones, commands sweeping views of the plains. On the dining side, a selection of fresh and flavorful international dishes is served with a touch of local flair at tables facing the panoramic terrace. On the other side, a handsome wooden bar occupies the central space. Pull up a stool and swap stories of wildlife sightings, or take a sundowner out to a comfortable sofa and toast the natural beauty beyond. As with all A&K Sanctuary lodges and camps, food and drink is included.

- A continental or English breakfast is served at the lodge before your morning activity.
- Lunch is enjoyed back at the lodge or picnic-style in the bush if you are out game-spotting.
- Pre-dinner drinks — a sundowner at the Lookout or a convivial cocktail around the campfire is always a good idea — are followed by a three-course à la carte dinner, expertly assembled from fresh, locally sourced, seasonal ingredients.
- There is also a weekly Boma Braai barbecue.
- Private dinners can be arranged by request on your own deck.

*Local flair enhances the freshest food*



*The neutral tones of the dining area shift focus to the views*

# Lodge Location



Kitirua Plains Lodge unfolds across a 128-acre private concession adjoining Amboseli National Park, where Mount Kilimanjaro and sweeping savannahs create a breathtaking backdrop. The name Amboseli is a corruption of empusel, which means “salty dusty place” in Maa, the language of the Maasai. The landscape here, a UNESCO World Heritage site at the Kenya–Tanzania border, is one of intoxicating beauty and real enchantment — a balance of wildlife-rich habitats, from deep-green marshes in the heart of the park to clusters of acacia forest in the east and great expanses of undulating savannah stretching all the way to the distant horizon.

Amboseli National Park’s vitality is sustained by aquifers and swamps such as Enkongo Narok and Longonya, which are replenished by the mountain’s

runoff. These wetlands provide crucial refuges for the wildlife during the dry season, nurturing various habitats. This diverse ecological expanse supports an extraordinary assemblage of fauna, including the iconic Amboseli elephant herds, prides of lions and seasonal visitors like flamingoes, drawn in by the temporary flooding of Lake Amboseli.

Beyond its ecological significance, Amboseli National Park is deeply embedded in the cultural and spiritual aspects of the Maasai people, for whom water embodies both sacred and life-sustaining qualities. This cultural connection seamlessly integrates the convergence of natural forces and cultural heritage at the location of Kitirua Plains Lodge, embodying a relationship between land, water, wildlife and the Maasai.

*There’s a strong relationship with Maasai communities*



*Kitirua Plains Lodge melds seamlessly into the surroundings*

# Getting There



Nairobi Airport to Amboseli Airstrip

30-minute flight



Amboseli Airstrip to the Lodge

40-minute drive

Please note, luggage restriction for light aircraft is 20kg/33lbs per person in a soft-sided bag, including hand-luggage.

# Experiences



Amboseli is an exceptionally diverse habitat; don't miss the opportunity to explore it after dark on a night game drive in search of nocturnal species. Trips further afield by other means are also possible (if you thought the view of Mount Kilimanjaro from your villa was impressive, wait until you have seen it from a hot-air balloon). Otherwise, you will delight in twice-daily game drives, with the resident elephants likely to be the focus of your attention. For a closer look, each guest is provided with state-of-the-art Leica binoculars — ideal for spotting distant wildlife in crisp, vivid detail.



*Heavy traffic: an elephant encounter*

## GAME DRIVES

Expert-led game drives in the early morning and late afternoon take you directly into this extraordinarily biodiverse habitat. Elephants are the stars of the show (and generally the easiest to spot), but Amboseli is also home to a tremendous variety of species, large and small.



*Experience local Maasai culture*

## MAASAI COMMUNITY VISITS

Kitirua Plains Lodge has a strong and mutually beneficial relationship with local Maasai communities. Join us in visiting some of these communities to see the work we're doing to support healthcare services, education and community enterprise initiatives firsthand.



*Zebras crossing: soar above them in a hot-air balloon*

## HOT-AIR BALLOONING

Some things really are worth getting out of bed for before dawn, even when you are on vacation. A hot-air balloon flight over Amboseli, watching Kilimanjaro take shape in the first rays of new morning sunshine, is surely one of them. Note that this incurs an additional fee.

# Wildlife & Nature

---

Amboseli National Park is world-renowned not only for its majestic elephants, once home to Echo, the world's most researched matriarch until her death in 2009, but also for its rich and diverse wildlife beyond these gentle giants. The park supports the full spectrum of the Big Five, including lions, leopards, and buffalo, creating thrilling opportunities for close encounters with Africa's most iconic animals. Giraffes browse the acacia woodlands, while zebras, impalas, wildebeests, and hyenas add vibrant movement to the landscape.

Amboseli's exceptional birdlife further distinguishes the park as one of Kenya's 60 Important Bird Areas (IBAs), recognized globally for its vital role in bird conservation. More than 400 species have been recorded here, including around 40 birds of prey. You may spot pelicans, kingfishers and great blushing masses of flamingoes among Amboseli's hundreds of species.

For wildlife enthusiasts, Amboseli offers unparalleled opportunities to witness herds of up to 100 elephants roaming freely, a truly intimate safari experience that underscores the park's reputation as a sanctuary for these magnificent creatures.

*Incredible natural sights await in Amboseli*



*Africa's most iconic animals are here*

# Your Kitirua Plains Lodge Safari



*Mount Kilimanjaro is a prominent sight*

Each day at Kitirua Plains Lodge is choreographed to balance adventure and serenity, bringing you closer to the soul of Amboseli. Guided by expert trackers and the rhythms of the wild, your time here unfolds effortlessly — from misty mornings beneath Kilimanjaro to fireside evenings under the stars.

## **A TYPICAL DAY MIGHT INCLUDE:**

- Wake-up Call — Gently roused by soft light and birdsong, enjoy a tea or coffee on your own deck
- Breakfast — A fresh, hearty breakfast served on the deck, with sweeping views of the plains
- Morning Game Drive — Set out as the savannah awakens; spot elephants, predators and rare birds in golden morning light
- Lunch — Return to the lodge for a relaxed, al fresco lunch featuring seasonal, locally sourced ingredients
- Afternoon Game Drive — A second opportunity to explore with your guide, perhaps tracking lion or admiring Amboseli's dramatic fauna
- Sundowners — Toast the day's discoveries with a classic safari sundowner in a scenic, wild setting
- Dinner — Conclude the day with a candlelit three-course dinner, shared stories and the sounds of the African night

# The Details



## HONEYMOONS, ANNIVERSARIES & SPECIAL OCCASIONS

Romance and luxury are woven into each of our stays, but our Kitirua Plains Lodge team adds an extra sprinkling of magic when it comes to special occasions. From private bubble baths drawn under the stars to fine dining experiences, the team creates cinematic moments and once-in-a-lifetime shared experiences that revel in the wild beauty of Amboseli National Park.

## FAMILIES WITH CHILDREN

We welcome children of all ages at Kitirua Plains Lodge. Amboseli National Park sets the stage for magnificent family experiences: here, the scenery is vast, screen time is naturally limited, and safaris bring Lion King characters to life. Our seamless logistics and robust safety protocols ensure peace of mind, while our portfolio of elite guides and behind-the-scenes activities is guaranteed to impress every young explorer.

## INCLUSIONS

- Accommodation, all meals, non-alcoholic and alcoholic beverages (including premium brands)
- Transfers to/from the nearest local airstrip
- Game drives
- Emergency medical evacuation
- Laundry services
- Bed night levy

## EXCLUSIONS

- Conservation levy and park fees at Amboseli National Park
- International and domestic flights, and road transfers to and from other camps and lodges
- Travel insurance, boutique purchases, spa treatments, gratuities and all other items of a personal nature



*The exteriors reflect the savannah setting*



*State-of-the-art Leica binoculars are provided to guests*

# Travel Tips



## WHAT TO PACK

**Clothing:** Think cool and comfortable. Colors should blend in with nature as much as possible: greens, browns and khaki colored clothing are advisable for safaris. We suggest long sleeves and long trousers for morning and evenings due to mosquitoes, and a fleece, sweater or warm jacket for morning and evening game drives. Sturdy and comfortable shoes are essential. A complimentary overnight laundry service is offered in the lodge.

**Accessories:** Sunscreen, sunglasses and hats are essential. Leica binoculars are provided for your stay, but good cameras are an absolute must. The lodge provides a torch as well as complimentary mosquito repellent and toiletries.

## HEALTH

Please discuss health precautions for your travel itinerary with a qualified health professional at least six weeks before departure. We also advise all travelers to take precautions against malaria.

## MONEY & CREDIT CARDS

All extras can be paid for with Visa, MasterCard, American Express and traveler's cheques. US dollars, British pounds, Euros and Kenyan shillings are also accepted; however, change will be given in the local currency.

## GRATUITY GUIDELINES

Tipping and gratuities remain entirely at your discretion.

*Light colored clothing is advisable*



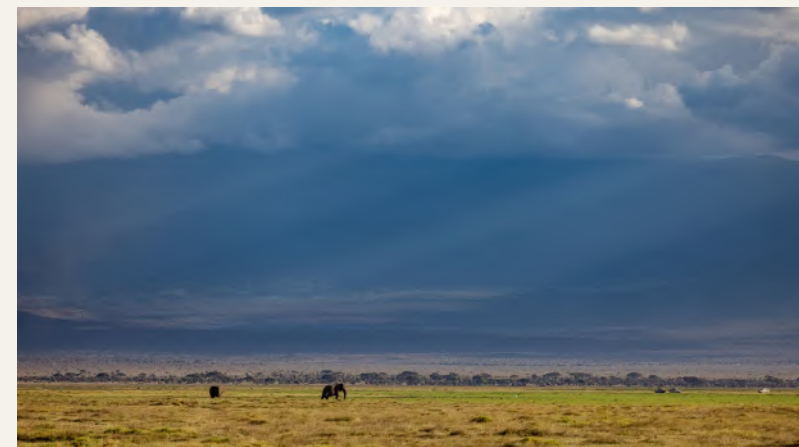
# Climate



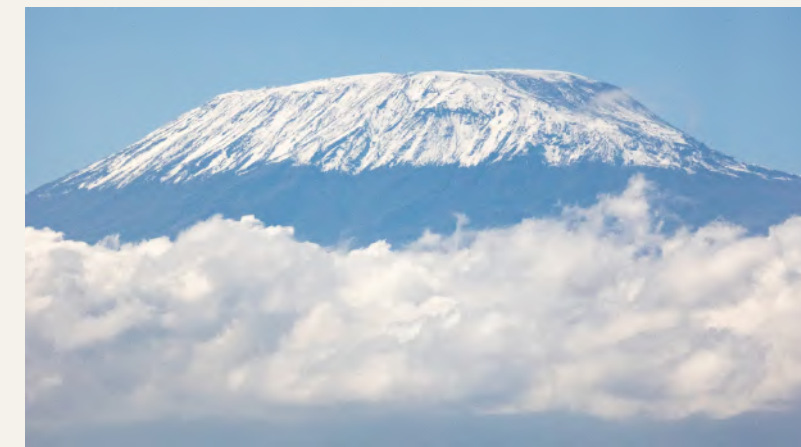
While it's impossible to predict the weather, guests might find it helpful to learn how a visit to Kitirua Plains Lodge might differ from one month to the next: from the secret perks of the rainy season to the best time to see the predator-prey drama play out.



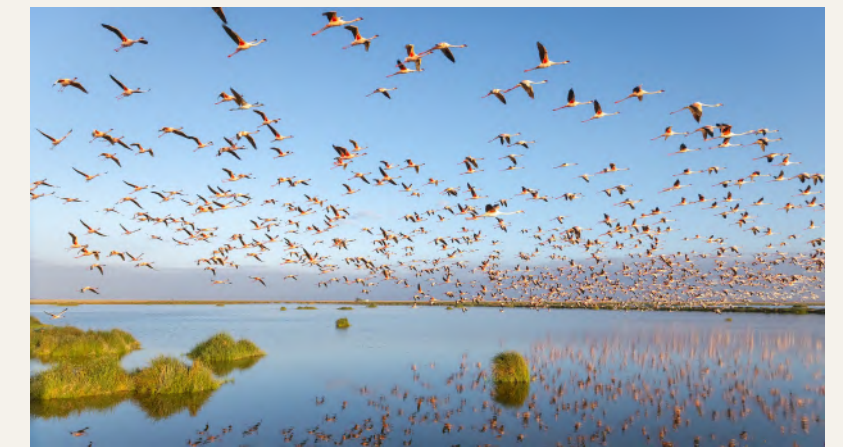
*Amboseli is known for its majestic elephants*



*Rain clouds make for dramatic skies*



*The view of Kilimanjaro is always arresting*



*Flamingos gather in a blush of pink*

## **JANUARY–FEBRUARY**

The climate is hot and dry, with highs around 30-33°C and cooler mornings around 20°C. Look out early in the day to see Mount Kilimanjaro, as the perfect backdrop for wildlife viewings of elephants, big cats and plenty of general game.

## **MARCH–MAY**

The long rains begin in April and May, where the afternoon showers transform the landscape into lush green, attracting birdlife and newborn plains game. Visibility may reduce slightly compared to other months, but the photography is exceptional.

## **JUNE–OCTOBER**

Transitioning into dry, cool mornings, these months often have clear skies providing excellent visibility of Mount Kilimanjaro. The game congregates around the swamps and permanent water sources, excellent for predator-prey action.

## **NOVEMBER–DECEMBER**

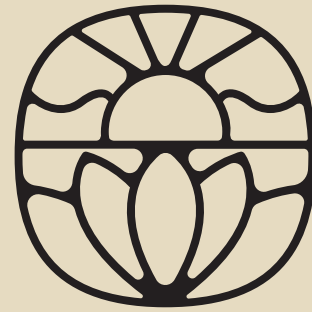
This is the beginning of the short rain season, marked by light afternoon and evening showers, bringing a fresh burst of green across the plains. The landscape becomes vibrant, migratory birds return in large numbers, and predator sightings remain strong. There are fewer tourists during this time, making for quieter, more exclusive drives with beautiful post-rain lighting and crisp skies.



## JOURNEYS WITH PURPOSE

Through A&K Philanthropy, your stay at Kitirua Plains Lodge directly supports vital local initiatives, including our Safe Water for School project in the Amboseli region. To date, 98 LifeStraw filters have been delivered to 21 schools and 14 health clinics, providing over 9,000 students and countless patients with access to clean, safe drinking water. Travel meaningfully, knowing your safari experience helps uplift the community that calls this landscape home.

*"A&K Philanthropy strives to protect the natural habitat."*



A&K SANCTUARY