



Sambora
Kinigi

FACT SHEET

2025/26

Updated 1 August 2025




stay@samborakinigi.com

A romantic couple is shown from the waist up, embracing each other in a savanna landscape. The woman, on the left, has dark hair tied back and is wearing a brown textured sweater. The man, on the right, has short brown hair and a beard, wearing a white long-sleeved shirt. They are both smiling and looking at each other. The background features rolling green hills and distant mountains under a blue sky with soft, wispy clouds. The lighting suggests late afternoon or early morning, with a warm glow.

Sambora Kinigi

Sambora Kinigi is a serene, intimate lodge, with 7 thatched suites, set in the stunning surroundings of Volcanoes National Park, Rwanda. Sitting just on the edge of the park, 300 meters from the Dian Fossey Campus and a short 5 minute drive from VNP HQ, Sambora is the perfect base for you to explore the incredible surroundings, and of course, for your once in a lifetime Rwandan trekking adventure!

With a focus on a high quality customer experience, Sambora delivers outstanding value through its approach to food, comfort and conservation.



The lodge is made up of 7 thatched suites of varying size, all set in lush tropical gardens. The main lodge area is made up of a large open plan structure, where there is a shared dining space, lounging areas, a well stocked bar and a cosy fire place. There is also a veranda with comfortable lounge seating looking onto the magnificent Mount Sabyinyo. The lodge feels like it's surrounded by volcanoes on all sides.

Sambora is recognised for its fantastic, personable service, high quality, modern cuisine and its authentic lodge feel. Constructed using local materials by local artisans, tradesmen and tradeswomen, the lodge feels a part of the landscape.

A shared dining experience is generally encouraged at Sambora, giving our guests the chance to meet each other and the opportunity to share their exciting trekking stories! For those guests wishing to enjoy a more private dining experience or to celebrate a special occasion, we have private dining options available by prior arrangement; around the fire pit (**weather permitting*), within the wellness centre or verandah/in-room dining.



Accommodation

Luxury Cottages

*Sabyinyo, Kwitonda
& Karisimbi*

Twin/King

1 x bedroom, en-suite
bathroom with rain shower,
living area, fireplace & private
verandah

Mini-bar, Starlink Wi-Fi,
Laundry Daily.

Luxury Suites

Murare & Turumwe

Twin/King

1 x bedroom, en-suite
bathroom with rain shower,
living area with fireplace &
shared verandah

Mini-bar, Starlink Wi-Fi,
Laundry Daily.

**Outdoor Shower in Murare
only*

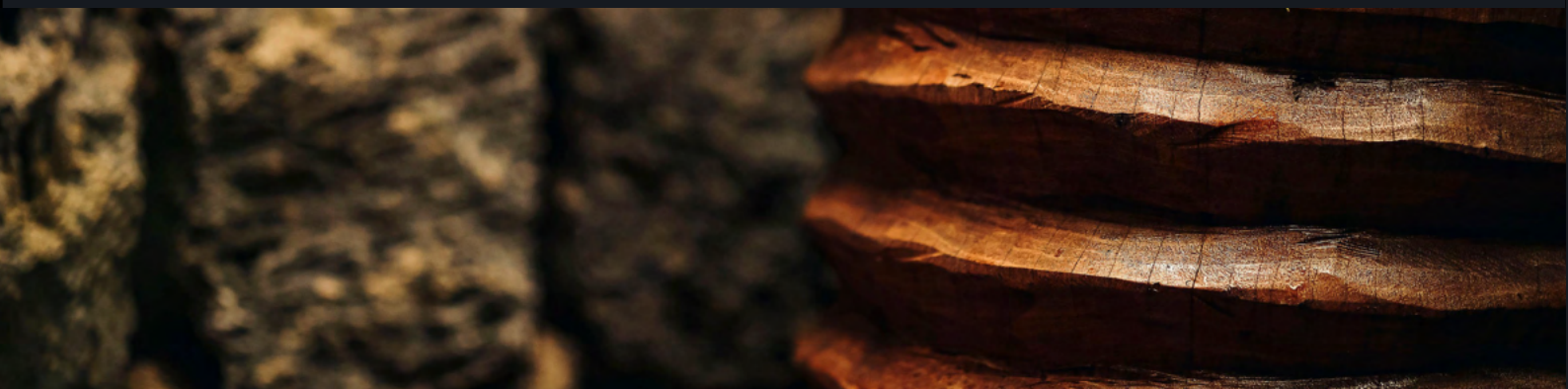
Signature Rooms

Kanamahento 1 & 2

Twin/King

1 x bedroom, en-suite
bathroom with rain shower
&
shared verandah

Mini-bar, Starlink Wi-Fi,
Laundry Daily.





Luxury Cottages 1, 2 & 3

Kwitonda & Sabyinyo

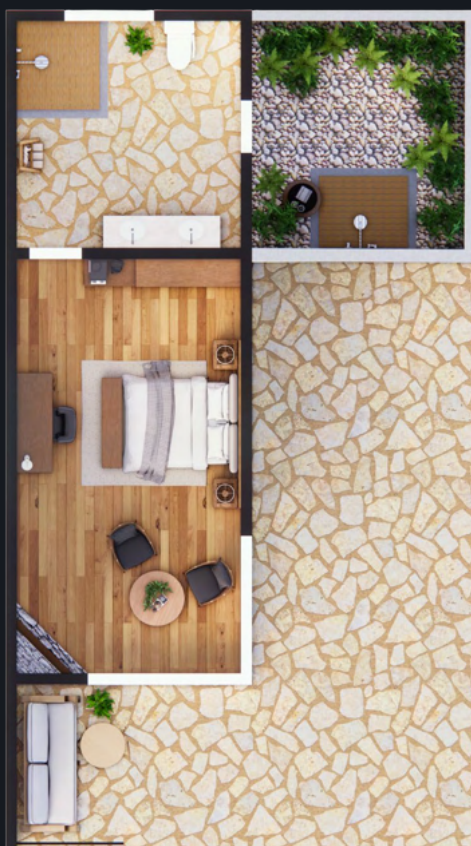
- 1 x bedroom
- En-suite bathroom with walk in rain shower
- Living area with fire place
- Private verandah
- 70 sqm

For guests looking for complete privacy, we recommend booking one of our luxury private cottages. The cottages are larger units and fully detached, surrounded by forest and have great views of Mount Sabyinyo.

Luxury Suite 1

Turumwe

- 1 x bedroom
- En-suite bathroom with walk in rain shower
- Living area with fire place
- Shared verandah
- 46 sqm



Luxury Suite 2

Murare

- 1 x bedroom
- En-suite bathroom with walk in rain shower
- Outdoor rain shower
- Living area with fire place
- Shared verandah
- 50 sqm



Signature Rooms 1 & 2

Kanyamiheto 1 & 2

- 1 x bedroom
- En-suite bathroom with walk in rain shower
- Shared verandah
- 36 sqm

For guests wishing to have more space and more privacy, we encourage the hiring of the entire family cottage which contains both signature rooms and gives them access to the central lounge with fire place. For families, it's a great option where the addition of another bed in the central lounge is possible if required.

Family Cottage (2 x signature rooms with central lounge)



Kanyamiheto 1 & 2 + central lounge

- 2 x bedrooms
- En-suite bathrooms with walk in rain shower
- Shared verandah
- Central lounge with fireplace
- 110 sqm

Room features:

- Californian king-size beds or twin configuration
- Fireplace (except signature rooms)
- En-suite bathroom with walk-in shower
- Locally sourced amenities
- Robes, slippers, and hot water bottles for cool nights
- Complimentary snacks and well stocked mini-bar
- Safe
- Hair dryers
- Heated towel racks
- Butler service available
- Binoculars
- In-room telephone





USP's

- Close proximity to Volcanoes National Park HQ
- Intimate lodge with 7 thatched suites - ideal for exclusive and small groups
- Exceptional dining experiences
- Immersive guest experience with strong local connection
- Forested surroundings offering privacy and serenity
- Personalised and considered service delivered by an excellent lodge team
- Cultural & conservation experiences on-site and nearby
- Owner run lodge with head office in country

EXPERIENCE

*Within Volcanoes National Park (pre-booking required *fees applicable)*

- Gorilla Trekking (3-6 hours)
- Golden Monkey (3 hours)
- Volcano Ascent:
 - Sabyinyo (3 country, difficulty: medium/hard - 6 hours)
 - Bisoke (Crater Lake, difficulty: medium - 4-6 hours)
 - Karisimbi (Two day trek with camping, difficulty: hard - 48 hours)
 - Dian Fossey Tomb Trek, difficulty: easy - 3-4 hours)

Local Area (Pre-booking required)

- Canoeing, *local river* (3-4 hours, 08:30 & 14:00)
- White Water Rafting (3-4 hours)
- Twin Lakes Boat
 - Bird Watching
 - Sundowners
 - Boat Ride
 - Canoeing
- Dian Fossey Campus Visit (1.5 hours)
- Hand Spun Hope - textile production (2 hours)
- Cultural Community Visits - banana beer making, basket weaving (2 hours)

Within the Lodge

- Gorilla Doctors Presentation (**additional fees applicable*)
- Genocide Presentation (**additional fees applicable*)
- Wellness Centre (**additional fees applicable*)
- Painting
- Traditional Dancing & Drumming
- Bird Watching
- Fire pit & BBQ dinner (**weather permitting*)



HELPFUL INFORMATION

Getting to Sambora Lodge

Sambora Lodge is nestled at the foot of the majestic Sabyinyo Volcano, just moments from the Volcanoes National Park HQ where gorilla treks begin.

- By Road: Approx. 2.5–3 hours from Kigali via Musanze (modern, high quality road).
- By Air: 30-minute helicopter flight from Kigali International Airport.

- Directions: Located on the left-hand side about 1 mile past One&Only Gorilla's Nest. If you pass the Dian Fossey Campus, you've gone too far!

Private transfers and helicopter charters can be arranged through our sister company, Sambora Private Journeys.

Lodge co-ordinates: what3words: ///dining.cushion.confided

VOLCANOES NATIONAL PARK

Sambora

SAMBORA

Kinigi

Ruhengeri
(25 minutes from Sambora)





Meals & Cuisine

Our team craft seasonal, nourishing menus that celebrate local ingredients and global flavours.

- All dietary requirements are catered for with advance notice (inc Kosher)
- Breakfast, lunch, and dinner included for lodge guests
- Daily 6pm Gin & Tonic sundowners
- In-room dining and packed meals available upon request
- Private dining options for special occasions
- Packed lunch provided for gorilla trekking

Lodge Amenities

- Fireside lounge and bar
- Dining terrace with volcano views
- Complimentary Wi-Fi
- Curated library with books and regional interest
- Wellness centre
- Laundry service (additional fee)

Climate & Weather

Situated at 2,300m above sea level, Sambora Lodge enjoys cool mountain air year-round.

- Dry Season: June to October
- Wet Season: March, April & November
- Shoulder Season: December, January & February
- Evenings: Often cool — warm clothing is recommended.

Umbrellas and rain jackets are available for guest use. Lodge rooms are equipped with cosy blankets and hot water bottles.

Equipment Hire

While we provide rain jackets and gators for our guests, they may require more equipment. Hiking boots, gloves, trousers and more can be hired from local providers if needed.

Forms of Payment

All major forms of credit card are taken. AMEX can be taken via online payment link. Card payments are subject to a transaction fee of 3.9%

Language

English spoken fluently. French & Kinrwandan

Check-in & Check-out

- Check-in from 14h00
- Check-out promptly by 11h00
- Late Check-out can be arranged by prior agreement only - chargeable at \$200 per person net and non commissionable.

Insurance

Guests must ensure they have adequate travel insurance prior to confirmation and acceptance of terms, conditions, and cancellation policy.



Emergency Medical Evacuation Cover

All guests travelling with our sister company, Sambora Private Journeys will automatically be covered for EMEC. However, if you are travelling with another travel agency, please ensure you have this cover in place.

Electricity

Electrical sockets (outlets) in Rwanda are one of the two European standard electrical socket types: The “Type C” 2 prong Euro-plug and the “Type E” and “Type F” 2 prong Schuko.

Electrical sockets (outlets) in the Republic of Rwanda (République du Rwanda) usually supply electricity at between 220- and 240-volts AC. If you’re plugging in an appliance that was built for 220–240-volt electrical input, or an appliance that is compatible with multiple voltages, then an adapter is all you need.

Vaccinations

Yellow Fever vaccination is only required when travelling to Rwanda from an endemic yellow fever country, a list of which can be found online. It's important you discuss requirements with your health professional prior to travel.

Vehicles

We recommend guests are accompanied by a

professional driver guide during their stay, we do not recommend using local taxi's or moto transportation.

Gratuities

We recommend that tipping should be undertaken subject to the service received. Should you feel that an individual has gone above and beyond to make your visit even more memorable feel free to tip according to your budget.

As such, we have enclosed a brief guideline to assist you.

Professional Guides/Local Tour Leaders – We recommend USD 25 – USD 50 per day.

Transfer only Drivers – We recommend about USD 10 to USD 20 per group, per transfer.

General Camp/Lodge – We recommend USD 20 – USD 30 per room per night. This should be placed in the communal tipping box to be distributed equally amongst all the staff or may be left in an envelope with Camp/Lodge Management. You are welcome to tip any individual staff providing excellent service directly.

Children Policy

Children of all ages are welcome at Sambora, though please note trekking is only allowed for ages 15+.



Guest Profile

- Gorilla Trekking
- Honeymooners
- Multi-generational families (exclusive use)
- Small group journeys
- Photographers, conservationists & cultural travellers
- Birders
- Adventure enthusiasts

Trade Support

- Trade image library available
- Sample Itineraries & suggested experiences
- Dedicated trade contact & sales support
- FAM trips encouraged
- Sales material & social media assets available

Responsible Tourism

Sambora was established to make a difference to the community and to support conservation efforts in the area.

- Sambora is a plastic free environment.
- 90% of the team are employed from surrounding communities.
- Locally sourced materials wherever possible.
- Waste minimisation and composting system in place.
- Profits reinvested in community projects and skill training programmes.
- We proudly support conservation efforts in the area.
- Farm to fork approach in partnership with local community





VOLCANOES NATIONAL PARK & GORILLA TREKKING

Transport

Guests will require transport while up in Volcanoes National Park. We recommend the use of a driver guide who will take you to VNP HQ for sign in and then over to the launch off points (between 15-45 minute drive away).

Permits

Permits are required in order to trek in Volcanoes National Park. Each activity begins at 7am at the Park HQ and must be booked in advance. Permits sell out quickly in high season, so its important to plan in advance.

Gratuities

Gorilla Trekking Guide/s – We recommend USD 25 per person, per trek (usually there are two guides, and it is standard practice to tip after each trek).

Porters on Gorilla Trekking – We recommend USD 5 to USD 10 per porter, per day (this is optional – wage paid for porter to their association).

Attire

VNP weather can be unpredictable at times and so it's important guests are well prepared. Waterproof trousers and jackets should be taken when trekking, gloves and waterproof hiking boots are recommended.

The lodge will provide guests with hiking gators. Walking sticks can be bought or hired at the launch off points

Porters

Porters can be hired on the day, usually at the launch off points into the park and are highly recommended. A fee of \$20 will be payable, cash.

Altitude

You'll start at an altitude of around 2300m, rising to 3500m. Some guests can experience altitude sickness and difficulty breathing at these altitudes, especially with strenuous physical exertion. Its recommended guests have a day at altitude to acclimatise prior to their treks.

Difficulty

Trekking within Volcanoes National Park can be challenging due to the altitude and in changeable weather. Guests have the option to choose an easy, medium or hard trek and the RDB teams will do all they can to accommodate guests needs.

Private Trekking

Private trekking is available in Volcanoes National Park - charged as a group of 8 people minimum. Please enquire if of interest.

Helpful Contacts



Faith Nahyuha - Reservations

stay@samborakinigi.com

+250 794 416 409



Khai Imanishimwe - Lodge Manager

stay@samborakinigi.com

+250 794 416 409



Greg Campher - Co-Founder

greg@samboraprivatejourneys.com

+44 7960 040 859



Sam Boarer - Co-Founder

sam@samboraprivatejourneys.com

+250 792 400 049



Hayley Plaskitt - Southern Africa Rep.

hayley@africahiddengems.com

A rustic outdoor shower area. A curved wall made of rough-hewn stones serves as the backdrop. A showerhead is mounted on the wall. The floor is made of wooden slats. To the left, a stack of white towels sits on a wooden surface. The area is surrounded by lush green plants, including ferns and large-leafed tropical plants. The ground is covered with light-colored gravel and large flat stones.

WE
LOOK
FORWARD
TO WELCOMING
YOU & OUR
GUESTS
TO SAMBORA.

www.samborakinigi.com