

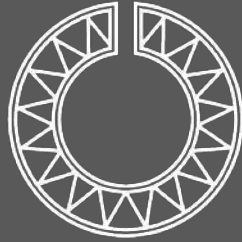


TAASA

LUXURY LODGES & CAMPS



EXPLORE - EMPOWER - PROTECT



Let's Go!

Inspired by the vibrant Maasai culture of East Africa, TAASA is more than just a brand; it's a call to adventure.

The Maasai word "TAASA" means "Let's Go" or "Do It," embodying the spirit of exploration, seizing the day, and living life to the fullest.

One of the Maasai's most iconic symbols, the round Maasai necklace, embodies wholeness and the unity of the Maasai community.

At TAASA, we honor this heritage by drawing inspiration from the Maasai as reflected in our logo and felt through our spirit.



TAASA

LUXURY LODGES & CAMPS

Mission Statement



Empower

Employ and empower members of our local community.



Protect

Preserve and protect the indigenous wildlife and natural species of the region.



Explore

Educate travelers on the rich natural and cultural resources Africa offers.



TAASA

LUXURY LODGES & CAMPS

Philanthropy



We are dedicated to empowering our nearby communities and proudly support our NGO partners in Tanzania.

Explore With Purpose | WEHAF | Sanaa | Maasai Honey | Wine To Water



TAASA

— TANZANIA SAFARI LODGE —



————— A luxury safari lodge located in Northern Tanzania —————

THE TAASA EXPERIENCE

Escape the crowds with exclusive game viewing within our protected wildlife area, with access to the Serengeti National Park and Mara river.

- Thrilling night game drives
- Sensitive off-road driving enables us to get closer to the game in open game-viewers
- Memorable bush dining and boma experiences
- All-inclusive experience
- Unlimited safari experiences
- Authentic Maasai experiences (village visits and storytelling)
- Complimentary return transfers from Lobo airstrip
- Family-friendly - all ages are welcome
- Ideal for smaller groups, families and couples



LOCATION & ACCESS

TAASA Lodge is centrally located between 3 of the largest safari ecosystems in the world—Ngorongoro Conservation Area, Maasai Mara National Reserve, and Serengeti National Park.

In a remote corner bordering the game-rich Serengeti National Park, TAASA Lodge sits within a protected wildlife area, offering guests an exclusive Tanzania safari.

GETTING TO TAASA LODGE

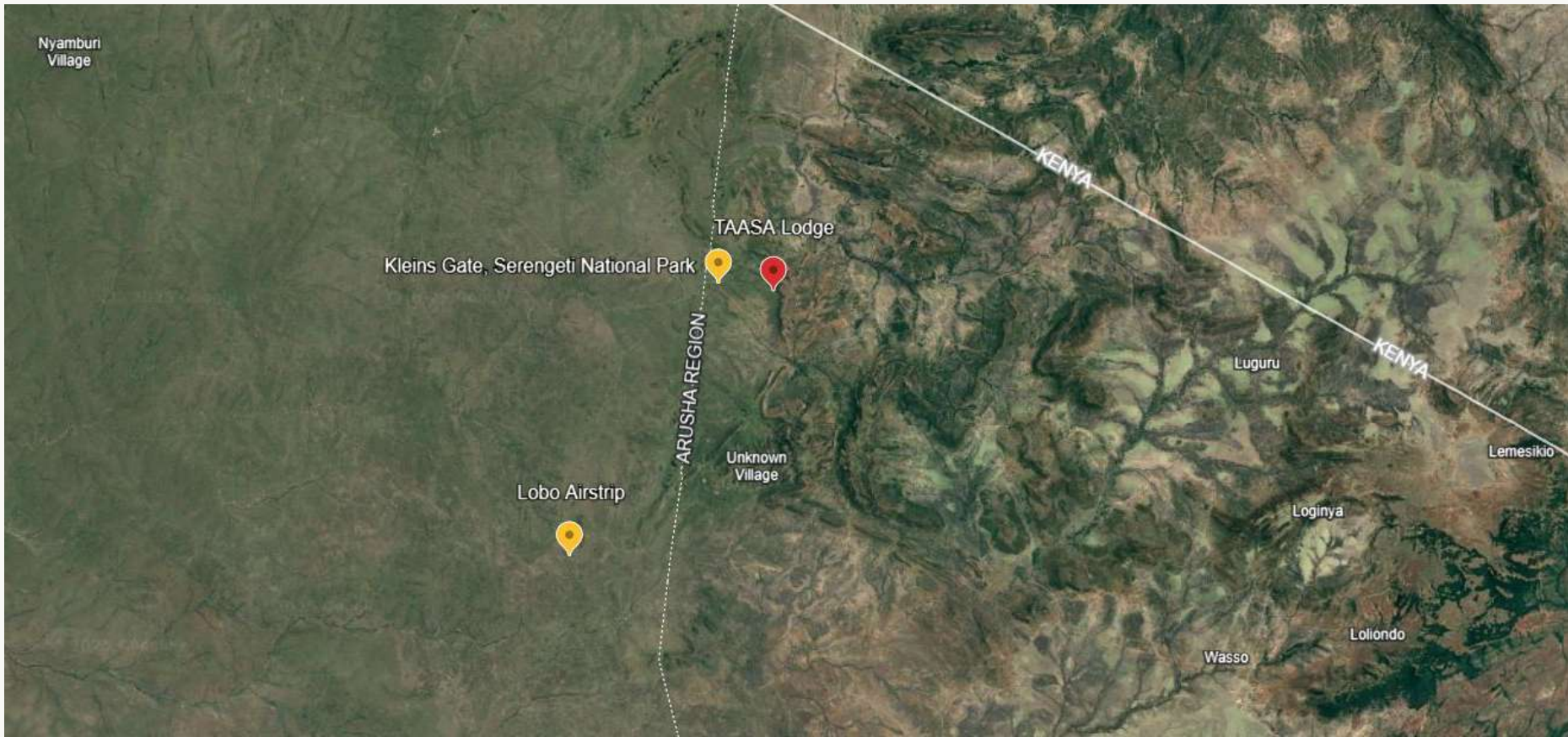
BY AIR

- The closest Airstrip to TAASA Lodge is called Lobo Airstrip. Approx (45 min drive from the airstrip to the lodge)
- Lobo Airstrip is accessed by light aircraft via daily scheduled flights from Arusha and Dar Es Salaam.
- Arrival welcome and complimentary return transfers from Lobo Airstrip to TAASA Lodge

BY ROAD

- TAASA is accessible by road: 10hr drive from Arusha and roughly 3h30m drive from Central Serengeti (Serenera).





Site Location: TAASA Lodge, Northern Tanzania
Dates: 1 January - 31 December

Flight Access: Lobo Airstrip - approximately 1.30 hr drive to lodge
Site Coordinates: 1.8603° S, 35.2763° E

THE LODGE

Set in a landscape that is gentle, yet rugged, the Lodge reflects the heart of this untamed land with a sophistic safari style.

- Dining area with indoor fireplace
- Furnished bar and sitting area
- Indoor & outdoor lounge
- Large viewing deck
- Firepit
- Infinity swimming pool
- Safari gift store (locally made curios)
- Outdoor boma area
- In room spa treatments available (on request)
- Laundry services





ACCOMMODATION

Perched on the edge of Lobo Valley, the Lodge provides breathtaking views from all 12 luxury tents overlooking the Serengeti.

- 12 luxury tented suites
- Including 2 interleading tents connected by an enclosed walkway
- Private verandas
- En-suite bathroom with 24/7 hot water, double vanity, hairdryer, plush robes and slippers
- Comfortable lounge area
- In-room workout basket (yoga mats, light weights, bands)
- 24hr backup power





FUN FOR ALL AGES

- Interleaving tents with enclosed walkway available
- Ideal for multi-generational groups, couples and small groups

Children's Activities include:

- Babysitters (butlers) available on request
- Safari game drives
- Bush babies spa treatments
- Volleyball
- Arts & crafts - beading, activity book, baking with our chef
- Bow & arrow shooting and spear throwing
- Survival skills



WILDLIFE & SAFARI

- Wildlife is abundant all year round at TAASA Lodge
- Experienced guides and trackers
- Sensitive off-road safari
- Open safari vehicles
- Private game vehicles available
- Night safaris
- Nature walks
- Big 5 sightings
- Stargazing



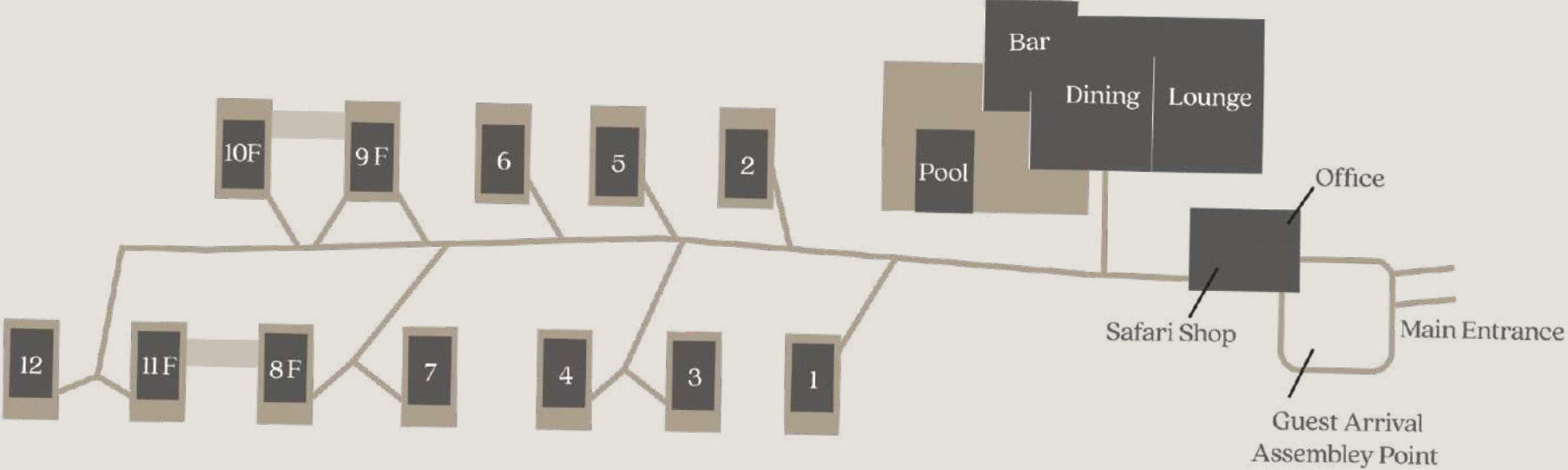


TAASA MOMENTS

- Nature walks
- Bush dining experiences
- Up close animal sightings
- Evening bush sundowners
- Boma dining experience
- Maasai cultural experience (village visits and storytelling)
- Ololosokwan Primary school visit
- Stargazing



TAASA LODGE - SITE LAYOUT





TAASA

— SERENGETI MIGRATION CAMP —



————— A mobile camp in the Serengeti National Park —————

LOCATION & ACCESS

Throughout the year, TAASA Migration Camp relocates to different areas of the Serengeti to offer the best wildlife viewing experience for each season:

Dry Season: Kogatende

Experience the awe-inspiring Great Migration! TAASA moves to Kogatende, perfectly positioned for prime viewing of the massive herds of wildebeest and zebra concentrated around water sources during this classic safari season. This is also the best time of year to witness the Mara River crossing!

Dates: July 9 - October 31, 2026 / May 16 - October 31, 2027

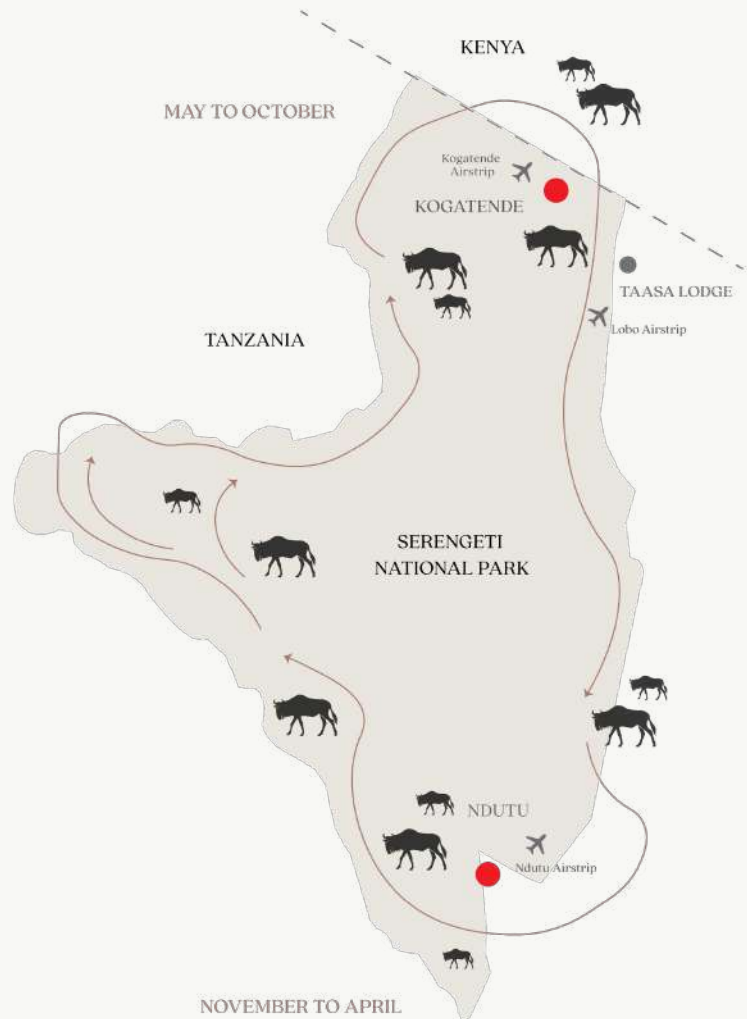
Access: Kogatende Airstrip Site: 1°40'24"S 35°00'48"E

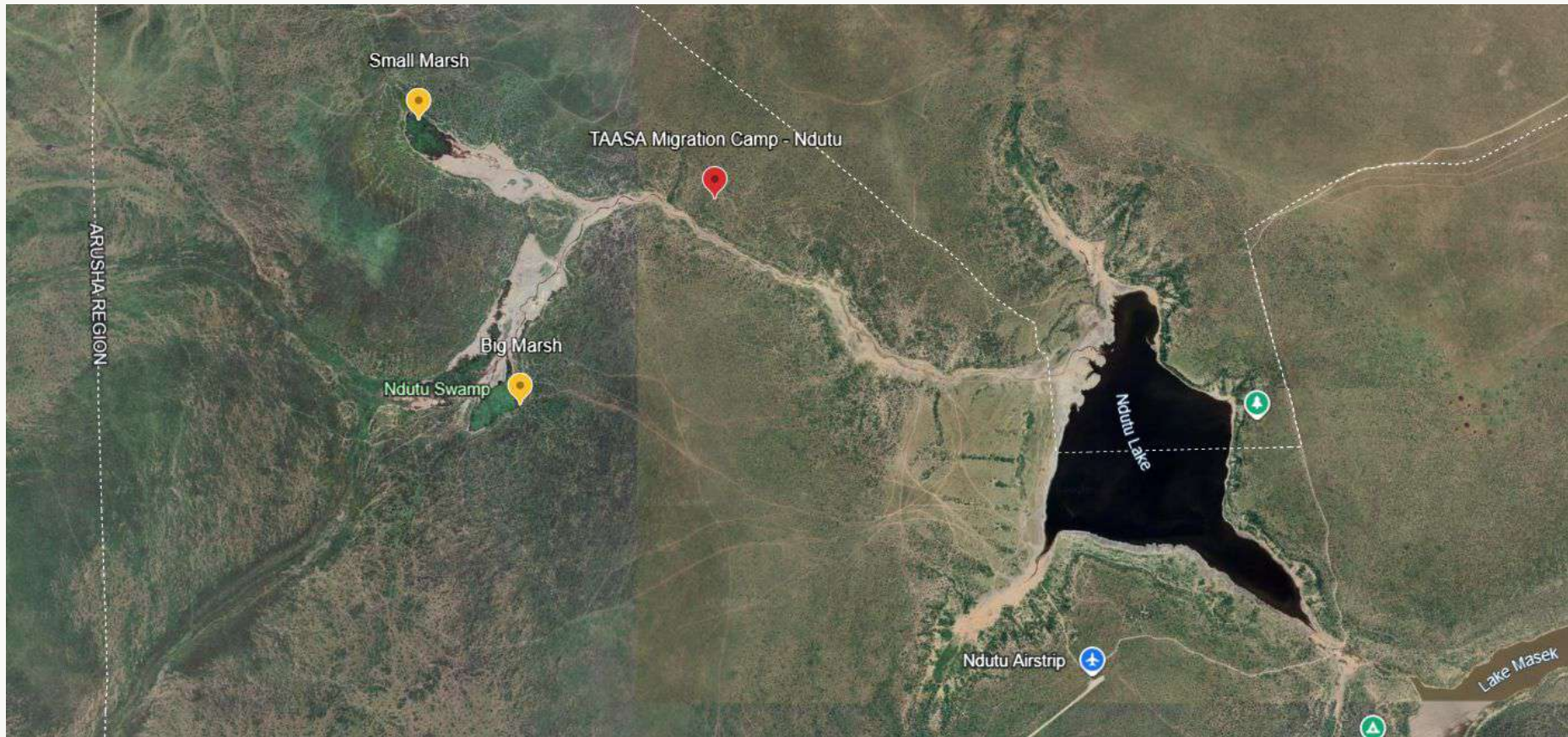
Green Season: Ndutu

Witness the miracle of life! TAASA moves to Ndutu in the lush green Southern Serengeti, where you can spot newborn wildebeest during the calving season.

Dates: November 23, 2026 - April 15, 2027 / November 21 - December 31, 2027

Access: Ndutu Airstrip Site: 2°58'31"S 34°57'00"E



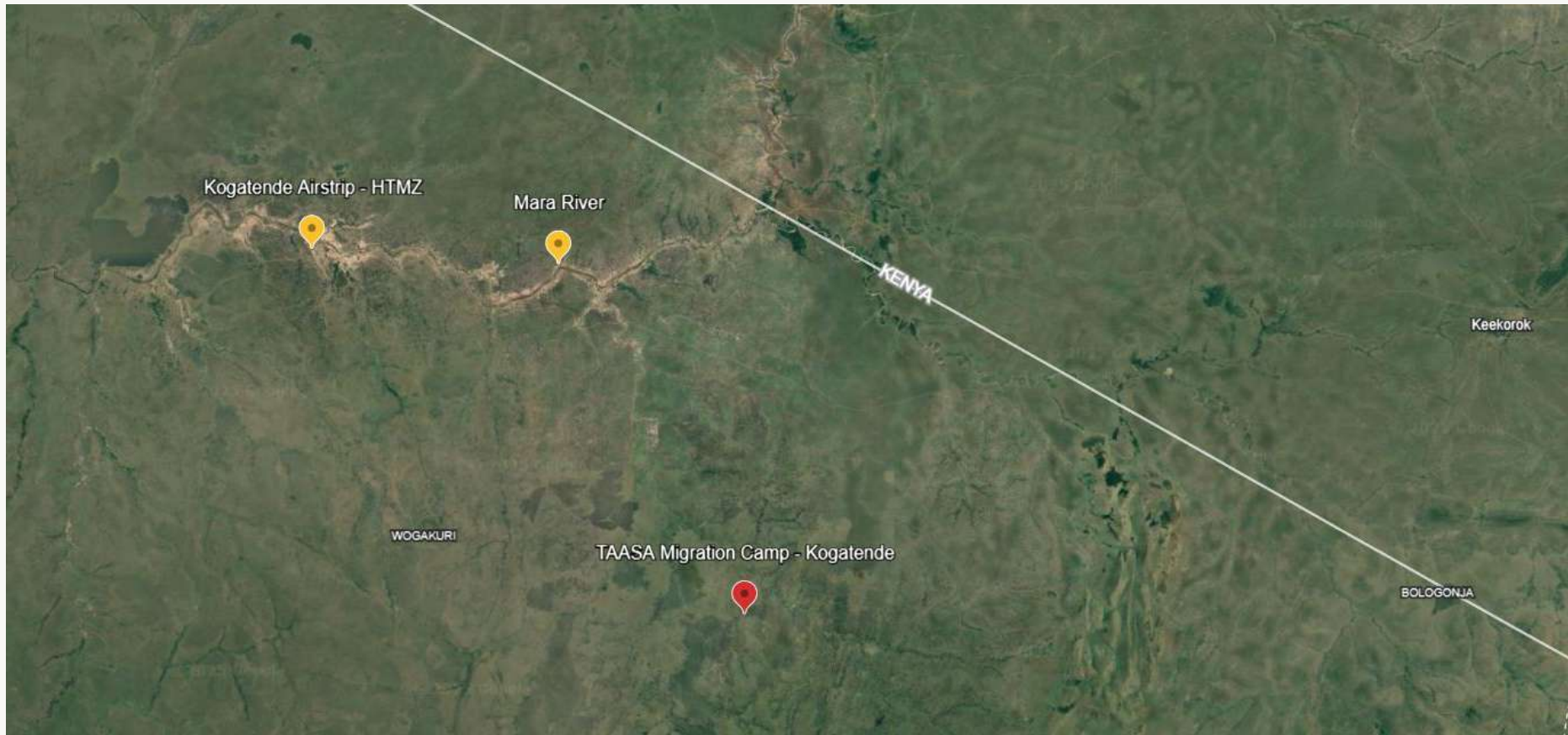


Site Location: TAASA Migration Camp - Ndutu

Dates: November 23, 2026 - April 15, 2027 / November 21 - December 31, 2027

Flight Access: Ndutu Airstrip - approximately 45 min drive to camp

Site Coordinates: 2°58'31"S 34°57'00"E



Site Location: TAASA Migration Camp - Kogatende

Dates: July 9 - October 31, 2026 / May 16 - October 31, 2027

Flight Access: Kogatende Airstrip - approximately 1 hr drive to camp

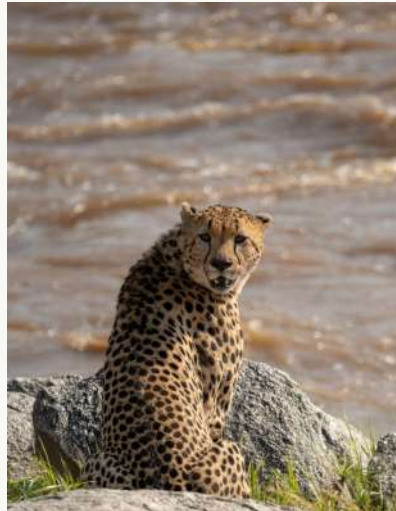
Site Coordinates: 1°40'24"S 35°00'48"E



THE EXPERIENCE

Nestled amidst the dramatic landscapes of the Serengeti, TAASA Migration Camp moves with nature throughout the year, following the migratory herds and ensuring a front-row seat to this incredible spectacle.

- Family-friendly and all-inclusive experience
- Bush dining experiences and a 'fire-touched' cuisine concept
- Big 5 Serengeti safari
- Stargazing
- Family-friendly - Ideal for multi-generational groups
- *Airstrip transfers from nearest Airstrip (dependant on season)
- Limited laundry services included
- In room spa treatments available (on request)





ACCOMMODATION

Wake to the sounds of the the bush in an open-sided canvas tent with stunning views of the Serengeti and beyond.

- 12 luxury tented suites
- Including 2 interleading tents connected by an enclosed walkway
- Private outdoor seating with views of the Serengeti
- En-suite bathroom with 24/7 hot water, double vanity, hairdryer, plush robes and slippers
- Indoor seating area
- In-room workout basket (yoga mats, light weights, bands)
- *In-tent spa treatments
- 24hr backup power



THE CAMP

- Lounge & bar tent
- Dining tent
- Outdoor fire pit
- Viewpoints
- Lawn games
- Children's activities

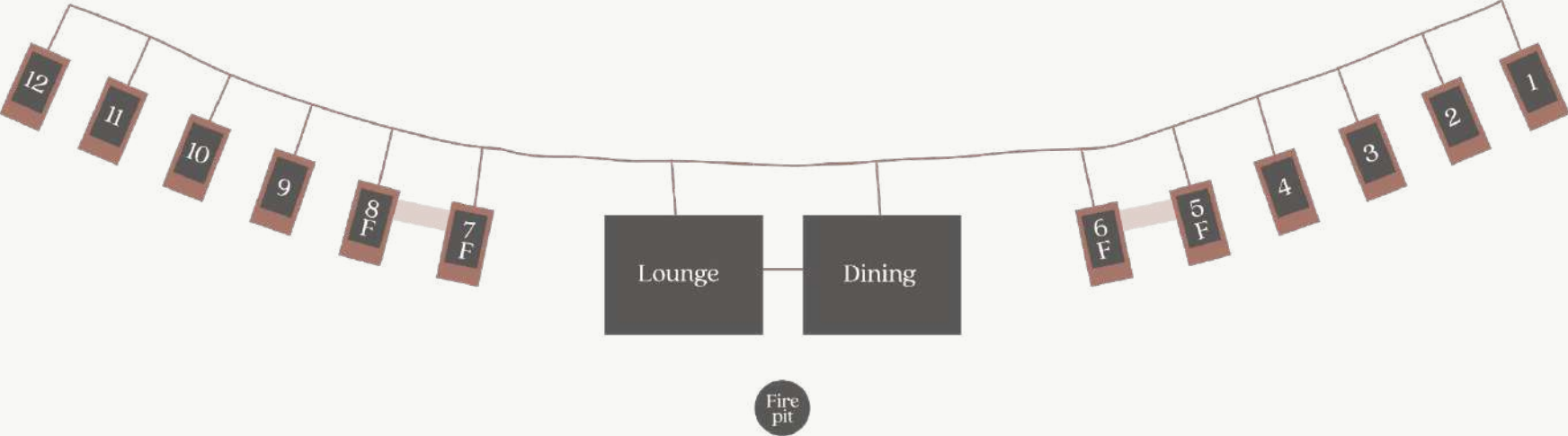


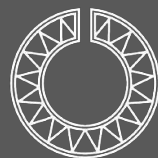
TAASA MOMENTS

- Bush dining experiences
- Afternoon bush sundowners
- Boma dining experience
- Flexible safari (morning, afternoon and full-day)
- Day trips to the Mara River for river crossings (Kogatende)
- Experienced guides and open safari vehicles
- Private game vehicles available
- Big 5 sightings
- Stargazing



TAASA MIGRATION CAMP - SITE LAYOUT





TAASA

— LUXURY LODGES & CAMPS —

CONTACT US

GENERAL INQUIRIES & RESERVATIONS

Tel: +255 684 229 936

General: info@taasalodge.com

Reservations: reservations@taasalodge.com

SALES & MARKETING

Sales & Marketing Manager: marketing@taasalodge.com

Commercial Manager: michelle@taasalodge.com

CONNECT WITH US ONLINE



EXPLORE - EMPOWER - PROTECT