



DISCOVER THE HOME OF ENDLESS VIEWS

Adventures of a Lifetime



MAKUMU
ENDLESS VIEWS

THROUGH OUR MAKUMU FAMILY AND OUR LODGE, WE CREATE EXPERIENCES FOR GUESTS TO ENRICH THEIR LIVES - WHETHER THEY ARE LOOKING FOR ADVENTURE, FAMILY TIME, ROMANCE, RELAXATION, OR THE CHANCE TO GIVE BACK.

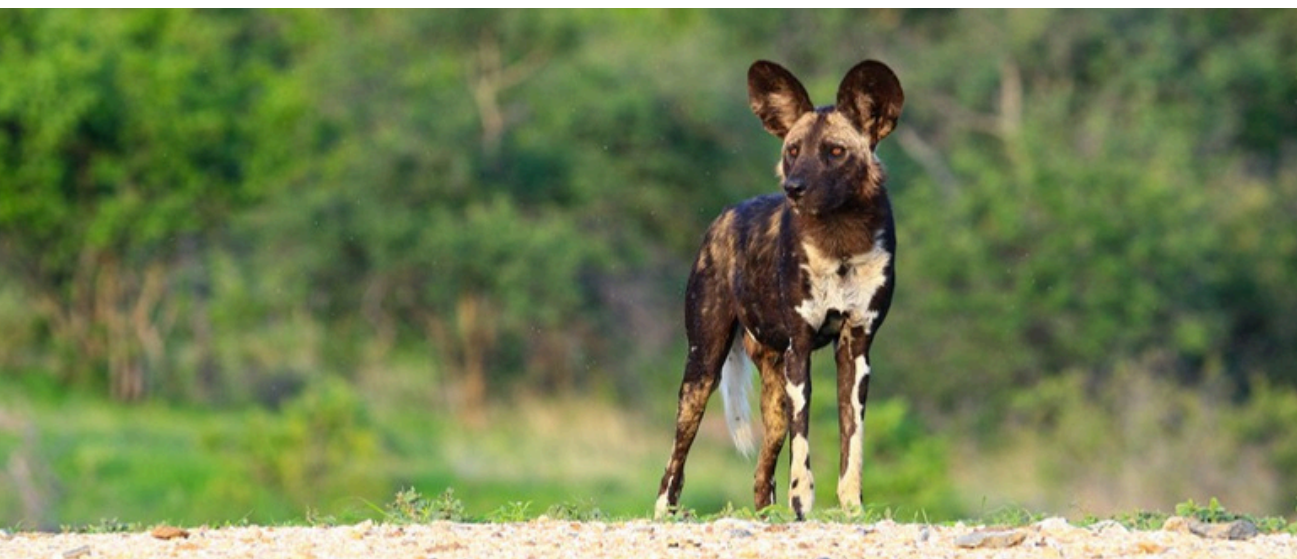
Timing is Everything

The table is subject to change due to weather conditions.

Temperatures shown are average values and may vary.

*Included in the rates

MONTHS	JAN	FEB	MARCH	APRIL	MAY	JUNE	JULY	AUGUST	SEPT	OCT	NOV	DEC
SEASONS & WEATHER	SUMMER - WET SEASON				WINTER - DRY SEASON					SUMMER - WET SEASON		
	HOT & HUMID				WARM & MILD BUT COLD AT NIGHT					HOT & HUMID		
HIGH TEMPERATURE	35° - 45° C	35° - 40° C	32° - 35° C	32° - 35° C	25° - 30° C	20° - 25° C	20° - 25° C	20° - 25° C	25° - 30° C	32° - 35° C	32° - 35° C	35° - 45° C
LOW TEMPERATURE	18° - 20° C	18° - 20° C	16° - 20° C	16° - 20° C	10° - 15° C	5° - 15° C	5° - 15° C	10° - 15° C	10° - 15° C	16° - 20° C	16° - 20° C	18° - 20° C
ACTIVITIES												
GAME DRIVES *	X	X	X	X	X	X	X	X	X	X	X	X
PHOTOGRAPHIC BUNKER	X	X	X	X	X	X	X	X	X	X	X	X
MAKUMU BUSH CINEMA					X	X	X	X	X			
BIRD WATCHING *	X	X	X	X	X	X	X	X	X	X	X	X
WALKING SAFARIS *					X	X	X	X	X			
ECO CHILDREN VISIT	X	X	X	X	X	X	X	X	X	X	X	X
MASSAGES	X	X	X	X	X	X	X	X	X	X	X	X
MICROLIGHT FLIGHT EXPERIENCE	X	X	X	X	X	X	X	X	X	X	X	X
HELICOPTER EXPERIENCE	X	X	X	X	X	X	X	X	X	X	X	X
ULTRA-PREMIER WINE TASTING	X	X	X	X	X	X	X	X	X	X	X	X
BUSH DINNERS/BREAKFAST *	X	X	X	X						X	X	X



“

'I'm not born in Africa,
but Africa was born in
me.'

Stefan Breuer - Owner





G

Game Drives

Conducted twice daily or as you prefer, in open safari vehicles with an armed ranger and a tracker, normally conducted early morning and late afternoon to search for the more elusive and nocturnal animals by spotlight.

W

Walking Safaris

Join our highly skilled guides (FGASA accredited) on foot in the surrounds and experience the ultimate feeling of being one with the African bushveld. Can be done in the morning in place of a game drive or coupled with a game drive if tracking big game.

REQUIREMENTS

- Only persons over the age of 16 years will be allowed to participate in this activity.
- Guests need to be fit and in good health. Guests over the age of 60, needs to present a medical clearance certificate as proof of fitness to participate.
- Guests must be able to understand and speak English for instruction from their guide.
- Guests will be allowed to participate in this activity at the discretion of their guide.

B

Bird Watching

The Klaserie Private Nature Reserve is rich in birdlife. The perfect activity to view and study birds in their natural environment.

Included in Rates





B

Bush Breakfast

A special treat for guests when visiting us during the wet season, is our Bush breakfast after a morning game drive. What better way to start your morning in the African bush?

Only available for guests staying 4 nights or longer. Weather and season dependent.

Included in Rates

B

Bush Dinners

Another special treat for our guests when visiting us during the wet season, is our Bush dinners in an open clearing.

This is where we come together to tell stories and share once in a lifetime moments with new friends.

Only available for guests staying 4 nights or longer. Weather and season dependent.

S

Star Gazing

Enjoy observing or imaging celestial objects in the sky at Makumu. Stargazing naturally occurs during game drives when we are out in the bush underneath the stars or during dinner at the boma.

With little to no unnatural lighting at Makumu, guests are sure to experience the magnificent night sky...and if lucky, you might see a shooting star!





G

Get Active and Have Fun

Makumu offers guests basic exercise equipment for those who may miss their daily trip to the gym. Makumu also has an entertainment area in the main lodge where guests can enjoy a game of pool.

T

The Rock Pool

Whether for a cool refreshing swim after a warm night's sleep, or a dip to escape the hot African sun, the pool at Makumu offers it all.

Built as a feature to blend in with the surrounding bushveld, don't be surprised by the visiting elephant herds that are known to quench their thirst here during the hot midday temperatures!

M

Makumu Shop

Not your regular curio shop. You will find a selection of clothing items, bushman sandals, books and other special treasures that have been gathered from all corners of the African continent.

***Items vary in prices and guests can make purchases at the lodge.**

Included in Rates





P

Private Vehicle

R 10 165.00 per day

The Private Vehicle at Makumu is a safari sanctuary on wheels, offering comfort, unobstructed views, and refreshments. Expert guides make each game drive a memorable adventure, providing insights into the local wildlife and landscape, ensuring an unforgettable safari experience in the heart of Africa.

Additional Charges

A

Airport Transfers

Transfers per way to/from Makumu Private Game Lodge to Hoedspruit / East Gate Airport:

Rates are charged per person

2	3	4	5	6	7	8
R 1085 pp	R 740 pp	R 610 pp	R 500 pp	R 450 pp	R 385 pp	R 355 pp

TRANSFER OPTIONS

- Flights: CPT HDS or CPT JHB HDS with Airlink or SA Express
- Road transfer from Hoedspruit Eastgate Airport to Makumu Private Game Lodge (about 90 minutes)
- Self-drive from Johannesburg (about 6 hours)

All Transfers need to be pre-booked



Photographic Bunker - iThumbela

Looking for a different photographic perspective? Makumu's ground-level photographic bunker offers the opportunity to be at eye level with the water to take spectacular shots of wildlife visiting the watering hole. Nicknamed iThumbela, loosely translated meaning "place to hide" in the Shangaan language, this is the perfect vantage point for the perfect shot!

LOCATION:

The photographic bunker is a 20-minute drive from the lodge, overlooking a wildlife-rich waterhole.

DIMENSIONS AND SIZE:

6m in length, 2.4m in width and 2m in height
Approx. 800mm of the front of the bunker is above ground, allowing the photographer to be at eye level with the water.

Please note: there is a staircase with rails descending into the bunker.

FACILITIES:

- Coffee & tea facilities
- Comfortable couch
- 6 bar stools for photography
- Camera bean bags
- Resource books & magazines
- Cooler box filled with guests' choices of drinks & water

HOW LONG WILL GUESTS SPEND THERE?

A full day activity - or depending on how long the guests want to stay for the day.

HOW MANY PEOPLE CAN IT TAKE?

Maximum of 6 people at one time (6 bar stools for photographers and a comfortable couch is available)

CAMERA EQUIPMENT

Guests would need to bring their own camera equipment.

R 15 970 per day

INCLUDED:

Exclusive Use of the Bunker for 1 - 6 guests
Private Game Vehicle
Private Ranger
Refreshments, Tea & Coffee



Additional Charges

Bush Cinema Experience

R 15 400 Exclusive Use

INCLUDED:

Welcome Drinks

Personalised Pizza Dinner and drinks

Movie of the day

Oversized Bean Bags

Minimum 3 Night Stay

Exclusive Use Bookings only

Book the lodge exclusively and enhance your experience with the Bush Cinema. Expert guides will escort you to a picturesque riverbed beneath Makumu, where lanterns create a magical atmosphere for an extraordinary evening. Enjoy a welcoming drink, Makumu Pizza by the fire, and settle into oversized beanbags for a unique cinematic experience surrounded by the African bush. The Bush Cinema at Makumu Private Game Lodge is the perfect blend of luxury, adventure, and wildlife immersion—an exceptional addition to your exclusive getaway in nature.



Additional Charges



W

Wine Tasting

For **Exclusive Use** bookings, guests have the option of adding a private wine tasting experience to their itinerary.

1-8 Guests	R 17 420
9-12 Guests	R 23 230

Additional Charges

M

Massages

Enjoy a massage with stunning views and natural sounds of the bush....

Massage	Time	Price
Foot Massage	30 min	R 1 078
Full Body Massage	60 min	R 1 826
Full Body Massage	90 min	R 2 420

Please let us know should you wish to book a treatment and relax.

All Massages need to be pre-booked.



Helicopter Experience

Makumu Panorama Route Sightseeing and Adventure Flight options

BLYDE CANYON SIGHTSEEING FLIGHT

The duration of this epic flight is approximately 1 hour. The helicopter will collect you from Makumu Lodge. On route to the Blyde River Canyon you will overfly stunning wilderness areas which provide you with the opportunity to spot various game species, including the Big Five. During this flight you will gain a unique perspective of the Blyderivierpoort Dam, Kadishi Waterfall, Three Rondawels, Blyde River, Treur and Belvidere Rivers. Exiting the Highveld over the Escarpment towards the Lowveld, through Devil's Window is a breath-taking experience!

PANORAMA ROUTE ADVENTURE FLIGHT

The duration of this exhilarating flight is approximately one hour and 40 minutes. In addition to the first option, you will have the opportunity to overfly Bourke's Luck Potholes and explore all the spectacular well know waterfalls which is located further South along the Panorama Route, as well as God's Window and the Pinnacle Rock. This would include Lisbon Falls, Berlin Falls, Mac Mac Falls, and Panorama Falls.

FLIGHT	APPROXIMATE EXCURSION TIME	PRICE INCLUDING VAT
Blyde Canyon sightseeing flight	1 HOUR	R 25 870
Panorama Adventure Flight	1 HOUR 40 MINUTES	R 37 933.50

- The above prices include 15% vat and is for the helicopter not per passenger.
- A maximum of 3 passengers allowed per flight.
- All flights must be pre-booked and are weather dependent.
- Prices only includes flights and no meals/drinks.

Additional Charges





F

Scenic Flight

BLYDE RIVER CANYON SCENIC FLIGHT

1 Pilot + 1 Passenger (2 aircraft)

60 min
R 4 920 pp

M

Microlight Flight Experience

MICROLIGHT WITH LEADING EDGE FLIGHT SCHOOL

Rates are charged per person

10 min	20 min	30 min	60 min
R 1 080 pp	R 1 990 pp	R 2 915 pp	R 4 920 pp

Transfers per way to/from Makumu Private Game Lodge and Leading Edge Flight School:

Rates are charged per person

2	3	4	5	6	7	8
R 1 303 pp	R 960 pp	R 825 pp	R 720 pp	R 665 pp	R 605 pp	R 570 pp

The longer flights to the canyon and Graskop should preferably be early morning as the weather is better to go over the Drakensberg.

Additional Charges





E

Eco Children visit

Makumu Private Game Lodge supports Eco Children, a non-profit organisation that was initiated by the Klaserie Private Nature Reserve which focuses on hands-on environmental education and whole school development.

- The opportunity to visit the local NPO community initiative that Makumu actively supports
- Includes a visit to an adopted school and seeing some projects in action, as well as a guided tour of the Eco Village, Library and more
- Valid for stays of 4 nights or longer
- Bottled water and packed lunches are provided
- Length of tour: +/- 6 hours including transfer times

CONTRIBUTION FEE PER PERSON	R 1 310
RETURN TRANSFER TO AND FROM THE LODGE 1-12 GUESTS	R 3 630

- Total return transfer cost subject to change
- Contribution fee subject to change based on group size, payable directly to Eco Children in advance at reservations stage. Additional contributions are welcome at guests' own discretion



Additional Charges
Giving Back



Weddings at Makumu

Makumu Private Game Lodge is ideal for celebrating a honeymoon, an intimate wedding or a special occasion for up to 12 guests – offering you a private and relaxing location to celebrate your special day. Makumu is also a favorite for special engagements. Tailored to meet your needs, stunning views and luxurious accommodation are just a few of the amazing things we offer. Rates: Wedding Package Rate (excludes cost of accommodation) Nett and non-commissionable

INCLUSIONS FOR THE COUPLE:

- Transfers to and from Eastgate Airport
- Welcome basket including fruit, bubbly, chocolates and relaxing bath products
- Makumu caps
- Special turndown of chocolate and flowers, bottle of Cap Classique, bubble bath, candles
- On the wedding day, flowers for the bride's bouquet and groom's buttonhole (flower types are seasonal and subject to availability)
- On the wedding day, a private game drive vehicle with "Just Married" on the back
- Officiator for the ceremony; includes his/ her transfers from/to Hoedspruit (please note: legal proceedings need to be completed in your home country)
- Private romantic dinner the night before/ after the ceremony

INCLUSIONS FOR THE CELEBRATION:

- Wedding ceremony in the bush (weather dependent)
- Basic classic white décor
- Wedding cake – two tier sponge cake or cupcakes decorated in theme and colour
- 12 chairs for ceremony (any extra chairs can be hired at an additional cost)
- Staff choir
- Bush breakfast (weather dependent)

EXCLUSIONS:

- Photographer – for the day and evening of the wedding
- Therapist/beautician – mini manicure, hair, make up
- Any additional décor/flower items
- Laundry service
- Accommodation - charged separately (min 2 night stay required)

R 55 900 Package

Up to 12 guests*

Please note: this is the basic wedding package and can be tailor-made according to your wishes and additional budget available.



Honeymoon Package

INCLUDED FOR ALL HONEYMOONERS STAYING 3 NIGHTS:

- Private dinner on one of the nights
- Romantic turndown



Additional Charges

