



CHOBE BAKWENA LODGE

2026



Bakwena Lodge is an intimate, privately citizen owned boutique lodge on the banks of the Chobe River offering a fully inclusive safari experience in an area which hosts a huge variety of bird species and some of the finest game viewing to be had worldwide.

13 Standard Chalets, 1 Family Room and 1 Honeymoon Suite are all designed and decorated in a manner befitting our environment and offering a cool and comfortable escape.

Bakwena Lodge's eco-credentials include a natural swimming pool filtered entirely by plants, employment policies, food choices, building methods and a host of otherwise unseen ways in which any negatives to the lodge surroundings or environment are addressed.

Activities, all based in-house and facilitated by their hand-picked professional guides, are naturally focused on land and water safaris in the comfort of their game drive vehicles and boats. Other activities on offer include a guided Village Walk/Bicycle Tour and a boat cruise to the meeting place of four countries (the only one in the world!). Bakwena Lodge warmly welcomes you to immerse yourself in the beauty that is Chobe.



QUICK FACTS:

- 5 minutes from the Kazungula Border (Botswana / Zimbabwe border)
- 5 minutes from the Kazungula Bridge Border (Botswana / Zambia border)
- 15 minutes from Kasane International Airport (BBK)
- 20 minutes from the Chobe National Park Entrance

Accommodation



STANDARD CHALET

STANDARD CHALET means the unit is either a Treetop or a Riverine Chalet. Guests will find out on arrival which room type they have been allocated.

All eight of Bakwena Lodge's Riverine Chalets are nestled in the indigenous riverine forest. The chalets are tailored to blend with the natural environment while ensuring a cool and comfortable stay. All chalets were built with locally sourced materials using eco-beam and sandbag technology.

All chalets include the following:

- | | |
|----------------------------------------------|-------------------------|
| Private verandah | Indoor & Outdoor Shower |
| King bed or 2 x 3/4 Twin beds | Ceiling fan |
| En suite bathroom | Air conditioner |
| Tea/coffee station | Hairdryer |
| Complimentary Wi-Fi | Mosquito Net |
| International Adaptor (hired from reception) | |



STANDARD CHALET

STANDARD CHALET means the unit is either a Treetop or a Riverine Chalet. Guests will find out on arrival which room type they have been allocated.

All five of Bakwena Lodge's Treetop Chalets are elevated on 3.5 meter stilts and perched within the tree canopy. The chalets are tailored to blend with the natural environment while ensuring a cool and comfortable stay.

All chalets include the following:

- | | |
|----------------------------------------------|-------------------------|
| Private verandah | Indoor & Outdoor Shower |
| King bed or 2 x 3/4 Twin beds | Ceiling fan |
| En suite bathroom | Air conditioner |
| Tea/coffee station | Hairdryer |
| Complimentary Wi-Fi | Mosquito Net |
| International Adaptor (hired from reception) | |



Accommodation



FAMILY ROOM

Bring the family! The Family Room is tailored to blend with the natural environment and designed to comfortably host two adults and two children with an option to add a camping bed for a third child.

The Family Room includes the following:

- Private verandah
- En suite bathroom
- King bed in one bedroom
- 2 x 3/4 Twin beds in the second bedroom
- Option to add a camping bed for a third child in the second bedroom
- Tea/coffee station
- Hairdryer
- Mosquito Nets
- Complimentary Wi-Fi
- International Adaptor (hired from reception)
- Ceiling fan
- Indoor & Outdoor Shower
- Air conditioner



HONEYMOON SUITE

The Honeymoon Suite is tailored to blend with the natural environment and is designed to create a romantic and relaxing atmosphere for couples to create memories that will last a lifetime.

The Honeymoon Suite includes the following:

- Beautiful River view
- Large private outdoor seating area
- King Bed
- Ceiling fan
- Air conditioner
- En suite bathroom
- Hairdryer
- Mosquito Net
- Tea/coffee station
- Complimentary Wi-Fi
- International Adaptor (hired from reception)
- Separate lounge
- Stand alone bath
- Indoor & Outdoor Shower





Activities



GAME DRIVES in the Chobe National Park.



BOAT CRUISES in the Chobe National Park.

GAME DRIVES & BOAT CRUISES in the Chobe National Park.

We believe guests come to Africa to see wildlife and Chobe has the highest concentrations of game, unparalleled anywhere in the world.

We employ 7 specialist guides, handpicked by the owners over a period of more than 20 years in this industry.

We own 7 game drive vehicles + 4 boats.

Because our activities are IN-HOUSE we are not bound by set times and activities are not limited to 3 hours. Our vehicles are consistently the only vehicles at both lion and leopard sightings.

Long-stay guests (4-nights +) are also offered a full day in the Chobe National Park with picnic lunch or a lunchtime boat cruise on the Chobe River.

Activities

EXPERIENCE THE BOTSWANA CULTURE!

Other activities included in our rates.



VILLAGE TOUR

Guided exploration of the nearby village either on foot or by bicycle.

This can also include a village **SCHOOL VISIT.**



FOUR-CORNERS BOAT CRUISE

This activity offers a unique experience to cruise along the Chobe River to the confluence of the Chobe and Zambezi Rivers where four countries meet: Botswana, Namibia, Zambia and Zimbabwe - a distinctive geographical point.

Activities



VICTORIA FALLS DAY TRIP

An optional paid for extra or for 3-night stays + you can exchange 2 x lodge activities.

A full day activity with return transfers to experience the magic of the Falls in neighbouring Zimbabwe. You will be transported from the lodge to the entrance of the Victoria Falls National Park for a tour of the Falls at your own leisure. Please note that although we will happily make suggestions this is an **unguided activity** and excludes Victoria Falls Park fees, Zimbabwe Visa fees (US\$ cash only for Visa fees) and lunch and the transfer may be shared with other guests.

Facilities



Reception & Curio Shop



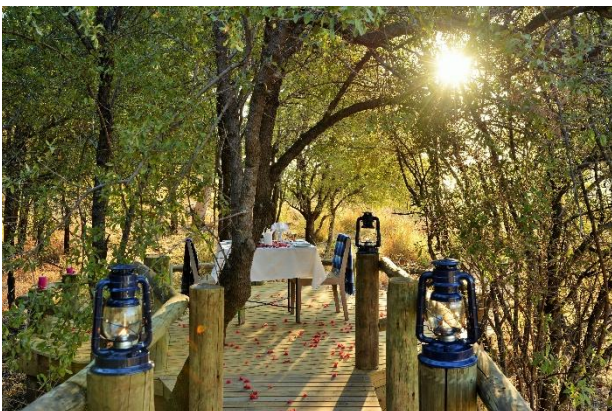
Main Area with separate
Lounge/Bar and Dining



Dining Area 1



Dining Area 2



Private Dining
(Honeymooners) 1



Private Dining
(Honeymooners) 2

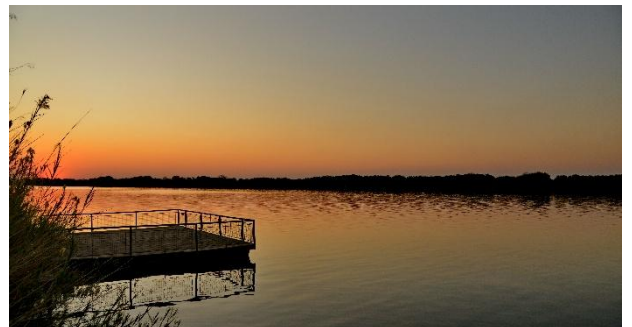
Facilities



Outdoor natural Swimming Pool
(Eco pool)
Naturally filtered by plants – no
chlorine, salt or harmful
chemicals



Upstairs Chill-Out Lounge above
the pool area



Unique floating Yoga Deck on
the Chobe River



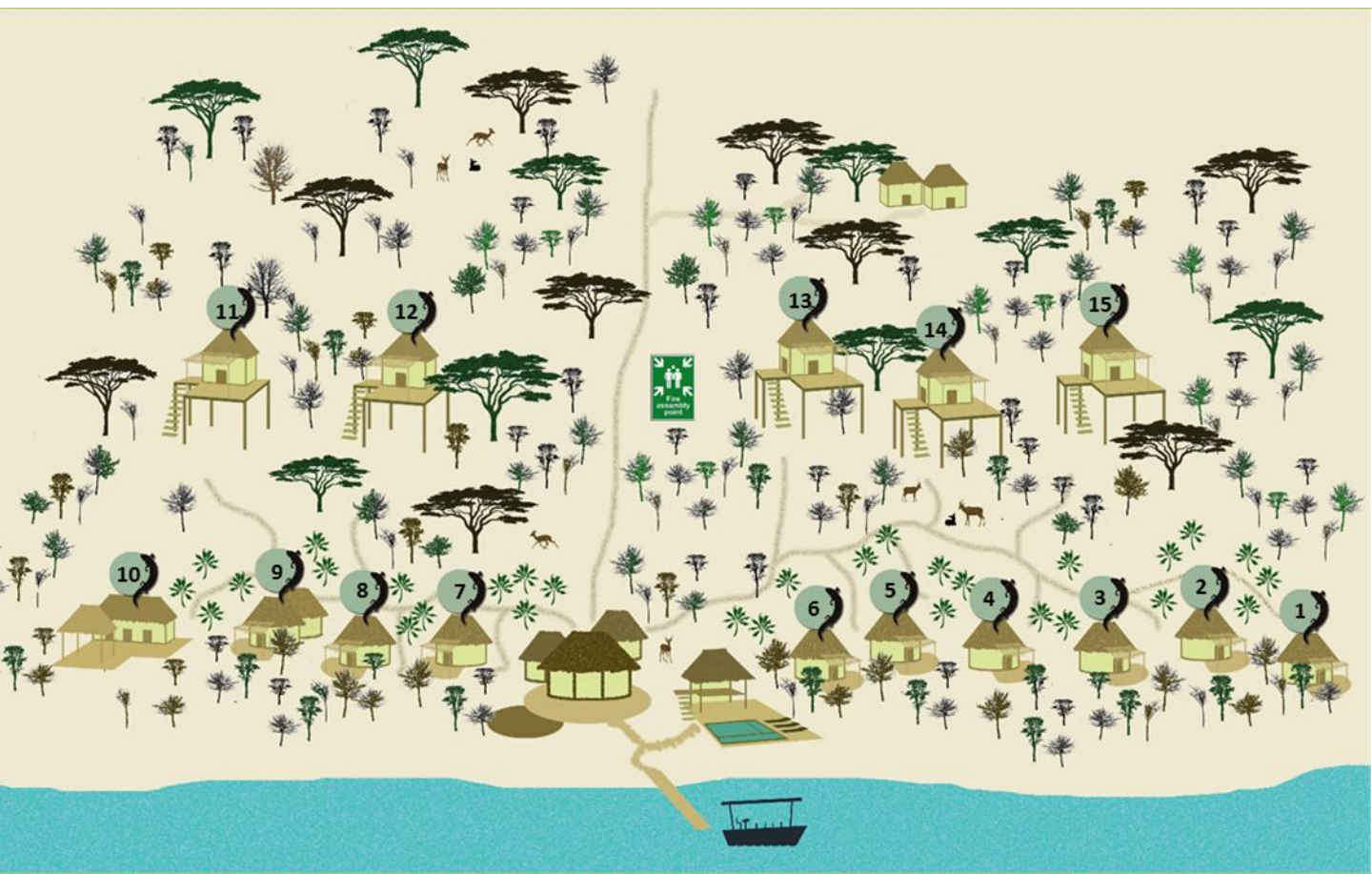
Boma



Fusion food inspired by local
cuisine using freshly-grown
produce from the garden

CHOBE BAKWENA LODGE

Lodge Layout



- | | |
|------------------------|------------------------------|
| UNITS 1 to 8: | Standard Chalets (Twin/King) |
| UNIT 9: | Family Room |
| UNIT 10: | Honeymoon Suite |
| UNITS 11 to 15: | Standard Chalets (Twin/King) |



CHOBE BAKWENA LODGE 2026 RATES

RATES IN US\$	Jan 2026 to April 2026				May 2026 to Oct 2026				Nov 2026 to Dec 2026			
	2 night stay		3 night + stay		2 night stay		3 night + stay		2 night stay		3 night + stay	
	PPS	SINGLE	PPS	SINGLE	PPS	SINGLE	PPS	SINGLE	PPS	SINGLE	PPS	SINGLE
Per Person Per Night	653	653	644	644	766	1040	749	1026	653	653	644	644
Tour Leader / Guide Rate (Inc. meals and activities & excl. drinks & Park Fees)										US\$ 250 per person		
Honeymoon Suite Surcharge										US\$ 100 per night		
PRIVATE ACTIVITIES (private vehicle & private boat)										US\$ 385 per night		

* All rates subject to change to government levies increases *

RATES INCLUDE:

- Accommodation, all meals, laundry
- Wine, beer, cider, softs & water (NOT INCLUDED is premium spirits, premium wines & craft/imported beers)
- Tourism levies & government taxes
- Two activities per full day i.e. game drive & boat cruise in the Chobe National Park
- Chobe National Park Fees
- Transfers to and from Kasane airport and to & from Zambia/Zimbabwe border on the Botswana side (NOT INCLUDED is the Kazungula Bridge Toll Fees to Zambia or the collection of Self-Drivers in rental cars from the airport or Kasane Town)

RATES EXCLUDE:

- Alcoholic beverages such as premium spirits, premium wines and craft/imported beers
- Collection of self-drivers in rental cars from the airport or Kasane Town
- Kazungula Bridge Toll Fees to Zambia

CHILD POLICY:

- Children 0-2 years stay free
- Children 3-11 years pay the child rate (50% of the adult sharing rate)
- Children 12 years and older pay the full adult rate

PLEASE NOTE: PRIVATE ACTIVITIES (including both a private vehicle & a private boat) ARE COMPULSORY FOR CHILDREN 11 YEARS AND YOUNGER

CHALETS/ROOM ALLOCATION POLICY:

STANDARD CHALET means the chalet is either a Treetop or a Riverine Chalet. Guests will find out on arrival which room type they have been allocated.



CHOBE BAKWENA LODGE 2026

ROAD TRANSFERS

Kasane Airport (BBK) :- Flying guests ONLY	FOC
Kasane Airport (BBK) :- SELF-DRIVERS	US\$ 17 per person
CROSS-BORDER ex Victoria Falls (Zimbabwe) / VFA to Bakwena Lodge	US\$ 75 per person
CROSS-BORDER ex Livingstone / Victoria Falls (Zambia) / LVI to Bakwena Lodge	US\$ 90 per person

PLEASE NOTE:

- Transfer rates are per ONE-WAY trip.
- Transfer rates are for SHARED transfers only.
- Minimum TWO PAX per SHARED transfer.
- PRIVATE transfer rates are available on request.

A TYPICAL DAY AT BAKWENA LODGE

05h00/05h30: Personal wake up call.

05h30 - 06h00: Grab a bite of continental breakfast.

06h00 - 10h30/11h00: Cameras at the ready for morning activity (your choice of either a game drive or boat cruise) – time of return to lodge dependent on game sightings. Enjoy brunch if you wish.

12h00 - 14h30: Eat lunch at leisure, RELAX, read, snooze, swim, wander, bird watch, lounge ...

14h30/15h00: TIME FOR TEA... afternoon tea & light bites.

15h00/15h15 - 18h00/18h30: More GAME VIEWING as the SUN SETS during your afternoon activity.

19h00/19h30: WINE & DINE amid the sounds of the bush.



Additional Info

Room Types & Policies

- All rooms are charged at the same rate except for the honeymoon suite (see rate on previous page)
- No triples available. All rooms are sold as either double or single occupancy except for the family room that sleeps four (parents + two children)
- Guests will be allocated a Standard Chalet unless the Family Room or Honeymoon Suite plus surcharge has been requested
- If one adult is sharing with a child under 11yrs, the adult will pay the per person sharing rate
- For longer than a 3-night stay please use the 3-night per night stay rate. We regret: No discounts for SADAC / 2 night minimum stay / fully inclusive rates only
- NB: Treetop Chalets staircases are not suitable for elderly guests over 70 years and those with mobility issues
- Changing of rooms on different nights is not permitted

Bringing the kids?

- Children of all ages are welcome
- **Rates:** Free for 0-2yrs, 3-11yrs pay 50% of adult per person sharing rate, 12+yrs full price
- Private activities are **compulsory** for families travelling with children 11 years & under
- Please enquire regarding available facilities

Other

- Check in time is 1pm and check out time is 11am
- To guarantee an activity on day of arrival guests must reach the lodge by **2pm**
- To guarantee an activity on day of departure guests must not depart before **11am**
- No need to pre-book activities, your itinerary will be discussed with your guide upon arrival
- No discounts for group bookings or tour leaders
- Educational visits are only awarded during low season
- Bakwena is located only 5 mins drive from Zambia & Zimbabwe border, so kindly arrange transfers directly to/from the lodge rather than requesting pick ups to/from Kasane Airport

Booking & Payment T's & C's

- * All rates subject to change to government levies increases *
- Rates are inclusive of value added tax (VAT) which is 14%
- Provisional bookings are held for a maximum period of 2 weeks.
- 50% deposit required to secure the booking and full payment to be made 30 days prior to guest arrival

Cancellation Policy:

For all bookings cancelled:

- 60 to 30 days prior to arrival – **50% of total amount due**
- 29 to 15 days prior to arrival – **75% of total amount due**
- 14 to 0 days prior to arrival – **100% of total amount due**

When paying please use the Invoice number as your payment reference. Payment options:

EFT (US\$)

PLEASE NOTE - all bank charges are for the payer's account

Account Holder: Bakwena Lodge & Camping Pty LTD

Bank Name: FNB (First National Bank)

Branch Code: 285167

Cheque Account Number: 63016147802

Swift Code: FIRNBWGX

CREDIT CARD

Please click on the link below to our secure online credit card payment platform:

<https://shop.directpay.online/paymybills/BakwenaLodge>

Frequently Asked Questions

- Wi-Fi complimentary and available in all rooms and in main area
- Good cell phone reception
- Air conditioners in all rooms
- Credit card facility available
- Adaptors available upon request
- It is customary to tip one's guide in person, otherwise there are Tip boxes available at Reception for guides and all staff.
- Limited facilities for the disabled – bookings will need to be approved on a case by case basis
- US\$ 20 Surcharge for storing luggage at Bakwena
- Sleep Apnea guests need not worry, we have power 24/7
- No pets allowed