



RACK RATES 2026 SEASON

01 NOVEMBER 2025 – 31 OCTOBER 2026

UPDATED FEBRUARY 2026



NAMIBIA

DISCOVER TRUE NAMIBIA. EXPERIENCE ITS MAGNIFICENT LANDSCAPES AND HEART-WARMING CULTURE WITH THOSE WHO KNOW IT BEST, PEOPLE WHO ARE PASSIONATE ABOUT CONSERVING THE LAND AND BRINGING ITS CAPTIVATING STORIES TO LIFE. WITH COMFORTABLE PROPERTIES LOCATED AT ALL OF NAMIBIA'S INTRIGUING PLACES OF INTEREST, THE GONDWANA COLLECTION NAMIBIA OFFERS UNIQUE ACCOMMODATION EXPERIENCES. DIFFERENT IN THEME, BUT EQUAL IN SINCERE WARMTH OF SERVICE, EACH PROMISES AN EXCITING AND AUTHENTIC NAMIBIAN EXPERIENCE THAT WILL TURN EVERY MOMENT INTO A GOLDEN MEMORY.



INDEX

WINDHOEK

OKAPUKA SAFARI LODGE	4
THE WEINBERG HOTEL	5
THE WEINBERG URBAN PODS	6

KALAHARI DESERT

KALAHARI ANIB LODGE, CAMPING2GO & CAMPING	7
REVERIE KALAHARI POD	8
KALAHARI FARMHOUSE & CAMPING	9

FISH RIVER CANYON

CANYON LODGE	10
CANYON VILLAGE	11
CANYON ROADHOUSE & CAMPING	12

NAMIB / SOSSUSVLEI AREA

NAMIB DESERT LODGE, CAMPING2GO & CAMPING	13
NAMIB DUNE STAR CAMP	14
THE DESERT GRACE	15
THE DESERT WHISPER	16
THE LUNA COLLECTION	17

SWAKOPMUND

THE DELIGHT HOTEL	18
THE PEARLS BEACH PODS	19

DAMARALAND

DAMARA MOPANE LODGE	20
PALMWAG LODGE, CAMPING2GO & CAMPING	21

KAOKOLAND

OMARUNGA EPUPA-FALLS CAMP & CAMPING	22
---	----

ETOSHA NATIONAL PARK

ETOSHA SAFARI LODGE	23
THE EKIPA ETOSHA POD	24
ETOSHA SAFARI CAMP, CAMPING2GO & CAMPING	25
ETOSHA KING NEHALE	26

OKAVANGO

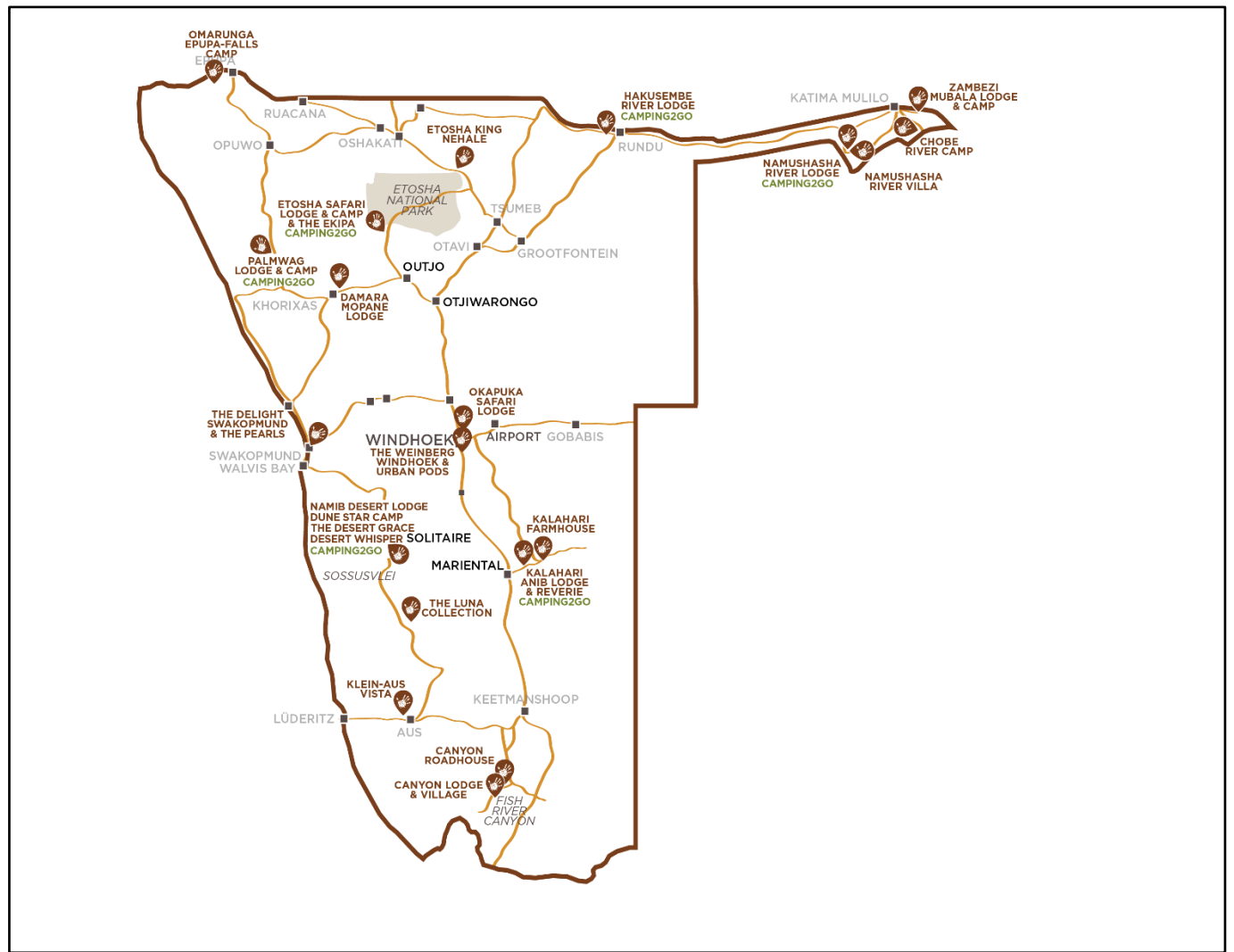
HAKUSEMBE RIVER LODGE, CAMPING2GO & CAMPING	27
---	----

ZAMBEZI / CAPRIVI

NAMUSHASHA RIVER LODGE, CAMPING2GO & CAMPING	28
NAMUSHASHA RIVER VILLA	29
ZAMBEZI MUBALA LODGE	30
ZAMBEZI MUBALA CAMP & CAMPING	31
CHOBE RIVER CAMP & CAMPING	32



MAP OVERVIEW





OKAPUKA SAFARI LODGE

32 KM NORTH OF WINDHOEK ON THE B 1 (KHOMAS)

OKAPUKA SAFARI LODGE All rates N\$ and include VAT & levies Rate validity 01.11.2025 - 31.10.2026	RATE N\$ PP
Standard Safari double room - sharing: bed & breakfast pp/night.	1931.00
Standard Safari room - single: bed & breakfast pp/night.	2413.75
Classic Safari double/twin - sharing: bed & breakfast pp/night.	2358.00
Classic Safari room - single: bed & breakfast pp/night.	2947.50
Luxury Safari Suite - sharing: bed & breakfast pp/night	2892.00
Luxury Safari Suite - single: bed & breakfast pp/night.	3615.00
Breakfast pp - buffet	284.00
Dinner pp - pre-booked, alternatively à la carte at the lodge	572.00
Light Lunch pp - pre-booked, alternatively à la carte at the lodge	228.00
Full 3-course lunch pp - pre-booked, alternatively à la carte at the lodge	341.00
Lunch pack pp	228.00

21 SAFARI ROOMS: 4 STANDARD ROOMS, 16 CLASSIC TWIN/KING SAFARI ROOMS & 1 CLASSIC SAFARI SUITE.
FAMILY ROOM CONFIGURATION: 1X INTER-LEADING FAMILY ROOM (2 ADULTS & 2 KIDS OR 4 ADULTS) ROOMS 5 & 6 HAVE A SLEEPER COUCH (2 ADULTS & 2 KIDS UNDER 13YEARS ONLY)

ACTIVITIES AT OKAPUKA SAFARI LODGE IN OKAPUKA PRIVATE GAME RESERVE

ACTIVITIES ARE SUBJECT TO AVAILABILITY. PRICES MAY VARY. ALL RATES ARE N\$ PER PERSON.

DESCRIPTION	DEPARTURE	DURATION	RATE N\$ PP
Sunrise Drive (guided): Enjoy this tour in an open 4 x 4 vehicle accompanied by an experienced guide. Gain insight and knowledge about Fauna and Flora. Touch Africa's soul. Refreshments and a light snack will be provided	± 30 min before sunrise	± 2 ½ hrs	935.00
Game Drive (guided): Join us on a guided drive in an open vehicle through the riverine area of Okapuka. Refreshments and light snacks will be provided. Departure 10 am (and 2 pm by special request). Duration 2 hours.	10:00 AM	± 2 hrs	935.00
Sunset Drive (guided): Experience a real Namibian sunset with a delicious drink in your hand. This outing allows you to forget the rest of the world and be carried away by nature's beauty.	± 2 ½ hrs before sunset	± 2 ½ hrs	935.00





THE WEINBERG HOTEL

13 JAN JONKER STREET (WINDHOEK)

THE WEINBERG HOTEL All rates N\$ and include VAT & levies Rate validity 01.11.2025 - 31.10.2026	RATE N\$
Courtyard double/twin room - sharing: bed & breakfast pp/night.	2827.00
Courtyard room - single: bed & breakfast pp/night.	3957.80
Superior upper-level double/twin room - sharing: bed & breakfast pp/night.	3103.00
Superior upper-level room - single: bed & breakfast pp/night.	4344.20
Loft double/twin/family - sharing: bed & breakfast pp/night.	3952.00
Loft - single: bed & breakfast pp/night.	5532.80
Terrace Suite per room/night: bed & breakfast including minibar – max 2 pax/room	16500.00
Terrace Suite Supplement for additional room/night: bed & breakfast including minibar – max 2 pax/room	5500.00
Breakfast pp – set menu	as per menu

*No single supplement for the Terrace Suite and can accommodate a max of 4 pax

43 ROOMS: 28 DELUXE TWIN/DOUBLE ROOMS, 3 SUPERIOR TWIN/DOUBLE ROOMS, 10 LOFT ROOMS & 2 TERRACE SUITES

FAMILY ROOM CONFIGURATION: 1X INTER-LEADING COURTYARD FOUNTAIN LEVEL ROOM (2 ADULTS & 2 KIDS OR 4 ADULTS), 1X SUPERIOR (ONLY 2 ADULTS & 1 CHILD UNDER 13 YEARS ON A SLEEPER COUCH) 7X FAMILY LOFTS (2 ADULTS & 2 KIDS UNDER 13 YEARS ONLY ON A SLEEPER COUCH) & 1X TERRACE SUITE (2 ADULTS & 2 KIDS) & 1X TERRACE SUITE (2 ADULTS & 2 KIDS OR 4 ADULTS)

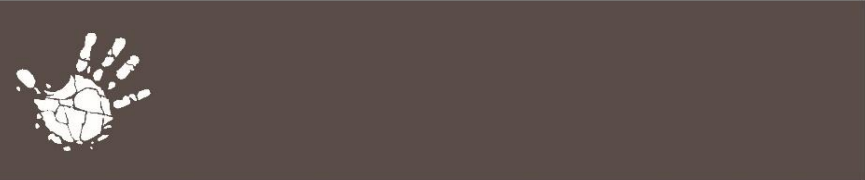
TRANSFERS FOR THE WEINBERG HOTEL All rates N\$ and include VAT & levies Rate validity 01.11.2025 - 31.10.2026	RATE N\$ pp Low Season 01 November 2025 – 30 June 2026	RATE N\$ pp High Season 01 July 2026 – 31 October 2026
Hosea Kutako International Airport to Windhoek (one way)		
1 person	566.00	612.00
2 - 3 persons pp	370.00	393.00
Eros Airport to The Weinberg (one way)		
1 person	214.00	231.00
2 - 3 persons pp	180.00	203.00
City Transfer (one-way)		
1 person	214.00	231.00
2 - 3 persons pp	180.00	203.00

TRANSFERS ARE SUBJECT TO AVAILABILITY AND NEED TO BE PRE-BOOKED. PRICES MAY VARY.

THE WEINBERG PROVIDES A DEVOTED HOST WHO SUPPORTS GUESTS WITH BOOKING ACTIVITIES, RESERVING DINNERS, AND CUSTOMIZING SERVICES.

CONFERENCING FACILITIES ARE SUBJECT TO AVAILABILITY AND NEED TO BE PRE-BOOKED WITH corporate@gcnam.com





THE WEINBERG URBAN PODS

13 JAN JONKER STREET (WINDHOEK)

- The Weinberg Urban Pods, part of the exclusive Gondwana Secret Collection, are located in Windhoek and offer a refined and private accommodation experience.
- The offering comprises two luxurious three-storey suites, each featuring an open-plan kitchen, dining and lounge area, en-suite bedrooms, a private outdoor space with barbecue facilities, and a plunge pool.
- Each pod accommodates up to six guests across three bedrooms, making it ideal for families.
- The stay is fully inclusive, with all food and beverages pre-stocked in the suite. Guests also have the option to enjoy breakfast at The Weinberg Hotel, which is included.
- A dedicated host is available to assist with activity bookings, dinner reservations, and personalised service arrangements.
- The kitchen is fully equipped, and the bar is well-stocked. Meals are pre-prepared based on guest preferences.
- To ensure complete privacy and exclusivity, no service staff or chef is stationed at the pods during the stay. However, guests have continuous access to their host.
- A private chef can be arranged upon request to prepare and serve meals at no additional cost.
- Complimentary Wi-Fi and USB charging ports are available, and the pods are fully air-conditioned for guest comfort.

THE WEINBERG URBAN POD All rates N\$ and include VAT & levies Rate validity 01.11.2025 - 31.10.2026	RATE N\$
Per room/night, inclusive of food and beverage, max 2 pax/room	30250.00
Supplement for additional room/night (2 rooms booked), inclusive of food and beverage, max 2 pax/room	18150.00
Supplement for additional room/night (3 rooms booked), inclusive of food and beverage, max 2 pax/room	12100.00

*No single supplement for The Weinberg, Urban Pod, and can accommodate max 2 pax/room

CONFERENCING FACILITIES ARE SUBJECT TO AVAILABILITY AND NEED TO BE PRE-BOOKED WITH corporate@gcnam.com

TRANSFERS FOR THE URBAN PODS All rates N\$ and include VAT & levies Rate validity 01.11.2025 - 31.10.2026	RATE N\$ pp Low Season 01 November 2025 – 30 June 2026	RATE N\$ pp High Season 01 July 2026 – 31 October 2026
Hosea Kutako International Airport to Windhoek (one way)		
1 person	Included	Included
2 - 3 persons pp	Included	Included
Eros Airport to The Weinberg (one way)		
1 person	Included	Included
2 - 3 persons pp	Included	Included
City Transfer (one-way)		
1 person	Included	Included
2 - 3 persons pp	Included	Included





KALAHARI ANIB LODGE, CAMPING2GO & CAMPING

30 KM NORTHEAST OF MARIENTAL ON THE C 20 (KALAHARI)

KALAHARI ANIB LODGE	RATE N\$ PP
All rates N\$ and include VAT & levies Rate validity 01.11.2025 - 31.10.2026	
Standard room double/twin/triple/family - sharing: bed & breakfast pp/night.	2572.00
Standard room - single: bed & breakfast pp/night.	3215.00
Comfort room double/twin/triple/family - sharing: bed & breakfast pp/night.	3207.00
Comfort room - single: bed & breakfast pp/night.	4008.75
Breakfast pp – buffet at Kalahari Anib Lodge	284.00
Dinner pp - buffet	572.00
Boma/Dune Dinner pp - min 10 pax, max 60 pax only	1386.00
Boma/Dune Dinner (BBQ) in combination with Sundowner Drive, including refreshments and transfer to lodge, pp - min 10 pax, max 60 pax only	1964.00
Light Lunch pp - alternatively à la carte at the lodge	228.00
Full 3 Course Lunch pp - alternatively à la carte at the lodge	341.00
Lunch pack pp	226.00
Camping2Go - Self-catering tents with en-suite bathrooms - sharing: bed only, pp/night.	1084.00
Camping2Go - Self-catering tents with en-suite bathrooms - single: bed only, pp/night.	2166.00
Kalahari Anib Campsite pp/night.	341.00

51 ROOMS: 32 STANDARD ROOMS & 19 COMFORT ROOMS, 8 CAMPING2GO TENTS & 3 CAMPSITES
FAMILY ROOM CONFIGURATION: 1x 3-BEDROOM STANDARD FAMILY ROOM (2 ADULTS & 1 CHILD OR 3 ADULTS), 1x 4-BEDDED STANDARD FAMILY ROOM (2 ADULTS & 2 KIDS UNDER 13 YEARS IN BUNK BEDS), 1 PAIR OF INTER-LEADING STANDARD FAMILY ROOMS (2 ADULTS & 2 KIDS OR 4 ADULTS), 4x COMFORT FAMILY ROOMS (2 ADULTS & 2 KIDS UNDER 13 YEARS IN BUNK BEDS), 8x CAMPING2GO SAFARI TENTS (2 ADULTS & 2 KIDS OR 4 ADULTS)

ACTIVITIES AT KALAHARI ANIB LODGE IN GONDWANA KALAHARI PARK

ACTIVITIES ARE SUBJECT TO AVAILABILITY. PRICES MAY VARY. ALL RATES ARE N\$ PER PERSON.

DESCRIPTION	DEPARTURE	DURATION	RATE N\$ PP
Bushmen Wisdom Experience (guided) (starting 01.12.2025) Discover the ancient world of the San, Namibia's first inhabitants, on a guided walk through the Kalahari with local experts. Learn to track animals, identify plants with healing properties, and hear stories that bring hunter-gatherer culture to life. Refreshments and a light snack will be provided. Book in advance or at the lodge.	Morning only	± 2hrs	935.00
Sunrise/Sundowner Drive (guided): Enjoy the panoramic views across the Kalahari dunes on this guided drive in an open vehicle. Refreshments and a light snack will be provided. Book in advance or at the lodge.	AM (± 30 min before sunrise) PM (± 3hrs before sunset)	± 3hrs	935.00
Hiking Trails (unguided; only to be booked directly at the lodge): Explore the Kalahari on foot at your initiative. A trail map is available at the reception.	Explore in your own time	Return before nightfall	Free of charge
Dune Walk (guided): Explore the Kalahari on foot with a guide. Refreshments and a light snack will be provided.	Morning only	± 2hrs	935.00
Desert Night Walk (short, guided walk, only bookable directly at the Lodge). Prepare to be amazed by the sight of scorpions or other nocturnal creatures glowing in the dark under UV light.	after dinner	±45 min	290.00
Morning Drive for Families (guided): subject to availability: After a leisurely drive, guests will arrive at one of the red dunes. The red sand of the dunes invites all children to play. The family will spend some relaxing time on the dunes with coffee and hot chocolate.	Morning only	± 2hrs	755.00





THE REVERIE KALAHARI POD

30 KM NORTHEAST OF MARIENTAL ON THE C 20 (KALAHARI)

- Reverie Kalahari Pod is part of the Gondwana Secret Collection, based in the Kalahari Desert.
- There is only one Kalahari Pod. It comprises three spacious single-story, dome-like structures offering an open plan kitchen, dining and entertainment lounge area; a free flow en suite bedroom with terrace and an outdoor area fully equipped with barbecue facilities, as well as a private plunge pool, overnight dream area, and firepit.
- Check-in is at 14:00, and Check-out time is 10:00 local time.
- Kalahari Pod is a two-guest exclusive lodge. Children under 14 years old are not permitted, but children 14 years and older are welcome if the total number of guests is two.
- It is fully inclusive of all meals and drinks, with exclusive activities on offer within the Gondwana Kalahari Park.
- There is an equipped kitchen and a fully stocked bar, as well as barbecue facilities in a terraced outdoor space. Meals are pre-prepared according to guests' preferences.
- To guarantee complete exclusivity and intimacy, there is no service staff or chef based at the Kalahari Pod during guests' stay; however, guests always have radio contact with their host.
- A private chef can be arranged upon request to prepare and serve dinner at no extra cost.
- Free Wi-Fi is available, and USB ports for charging equipment are provided.
- Reverie Kalahari Pod is equipped with air conditioning.

REVERIE KALAHARI POD All rates N\$ and include VAT & levies Rate validity 01.11.2025 - 31.10.2026	RATE N\$
Per room/night, fully inclusive, max 2 pax/room	30250.00

ACTIVITIES AT REVERIE IN GONDWANA KALAHARI PARK:

ACTIVITIES ARE SUBJECT TO AVAILABILITY. PRICES MAY VARY. ALL RATES ARE N\$ PER PERSON.

DESCRIPTION	DEPARTURE	DURATION	RATE N\$ PP
Bushmen Wisdom Experience (guided) (starting 01.12.2025) Discover the ancient world of the San, Namibia's first inhabitants, on a guided walk through the Kalahari with local experts. Learn to track animals, identify plants with healing properties, and hear stories that bring hunter-gatherer culture to life. Refreshments and a light snack will be provided. Book in advance or at the lodge.	Morning only	± 2hrs	Included
Sunrise/Sundowner Drive (guided): Enjoy the panoramic views across the Kalahari dunes on this guided drive in an open vehicle with a dedicated guide. Refreshments and a light snack will be provided.	AM (± 30 min before sunrise) PM (± 3hrs before sunset)	± 3hrs	Included
Hiking Trails (unguided; only to be booked directly at the lodge): Explore the Kalahari on foot on your initiative. A trail map is available at the reception.	Explore in your own time	Return before nightfall	Included
Dune Walk (guided): Explore the Kalahari on foot with your private guide. Refreshments and a light snack will be provided.	Morning only	± 2hrs	Included





KALAHARI FARMHOUSE & CAMPING

IN STAMPRIET
53 KM NORTHEAST OF MARIENTAL (KALAHARI)

KALAHARI FARMHOUSE & CAMPING All rates N\$ and include VAT & levies Rate validity 01.11.2025 - 31.10.2026	RATE N\$ PP
Double/twin/triple/family room - sharing: bed & breakfast pp/night.	2125.00
Single room - bed & breakfast pp/night.	2656.25
Breakfast pp - buffet	284.00
Dinner pp – set menu	415.00
Light Lunch pp - alternatively à la carte at the lodge	228.00
Full 3 Course Lunch pp - alternatively à la carte at the lodge	341.00
Lunch pack pp	226.00
Kalahari Farmhouse Campsite pp/night.	341.00

11 BUNGALOWS: 9 TWIN ROOMS, 1 FAMILY ROOM, 1 INTER-LEADING FAMILY ROOM & 8 CAMPSITES

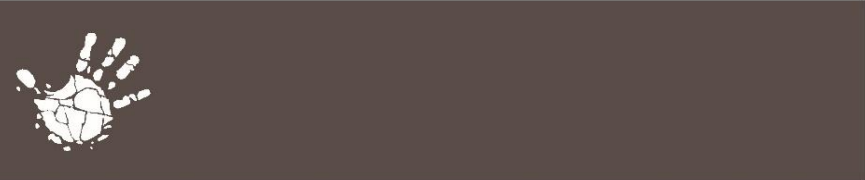
FAMILY ROOM CONFIGURATION: 1x 4-BEDDED FAMILY ROOM (2 ADULTS & 2 KIDS OR 4 ADULTS), 1x INTER-LEADING FAMILY ROOM (2 ADULTS & 2 KIDS OR 4 ADULTS)

ACTIVITIES AT KALAHARI FARMHOUSE (IN GONDWANA KALAHARI PARK):

Kindly note that guests are welcome to take part in the activities offered at **Kalahari Anib Lodge**, ± 30 km away. As there are **no activities at Kalahari Farmhouse**, Guests are required to arrange their own transport to Kalahari Anib Lodge.

Guests are welcome to visit the butchery and smokery at the Self Sufficiency Centre, where much of the meat for all the Gondwana Lodges is processed and packed.





CANYON LODGE

20 KM EAST OF THE FISH RIVER CANYON ON THE C37 (FISH RIVER CANYON)

CANYON LODGE All rates N\$ and include VAT & levies Rate validity 01.11.2025 - 31.10.2026	RATE N\$ PP
Double/twin/triple/family room - sharing: bed & breakfast pp/night.	2976.00
Single room: bed & breakfast pp/night.	3720.00
Breakfast pp - buffet	270.00
Dinner pp	572.00
Light Lunch pp - alternatively à la carte at the lodge	228.00
Full 3 Course Lunch pp - alternatively à la carte at the lodge	341.00
Lunch pack pp	226.00

30 NATURAL STONE CHALETs: 28 TWINS & 2 FAMILY ROOMS
FAMILY ROOM CONFIGURATION: 2X 4-BEDDED FAMILY ROOMS (2 ADULTS & 2 KIDS OR 4 ADULTS)

ACTIVITIES AND TRANSFERS FOR CANYON LODGE

ACTIVITIES ARE SUBJECT TO AVAILABILITY. PRICES MAY VARY. ALL RATES ARE N\$ PER PERSON.
 ANY CHANGES IN NATIONAL PARK FEES WILL BE REFLECTED IN OUR RATES ACCORDINGLY.

DESCRIPTION	DEPARTURE	DURATION	RATE N\$ PP
Morning Walk (guided): about 6 km, takes you right into Gondwana Canyon Park. You will be accompanied by a guide who will gladly share his knowledge about the fascinating desert landscape. This tour is not going to the Fish River Canyon.	± 07:30 AM	±2-3hr	285.00
Sunrise Hike (guided): We drive you to a spot with a grand view and watch the sunrise while enjoying coffee and tea. Then we walked back a short distance to the lodge. This tour is not going to the Fish River Canyon.	30 min before sunrise	±3hrs	535.00
The trail from the Village to the Lodge or vice versa (unguided): A hiking trail takes you from Canyon Village up to a mountain plateau with a breathtaking view of the vast plains adjacent to the canyon. At 'Archway Rock,' you start to make your way back into the plain and to the lodge.	In your own time	±2-3hrs	Free of charge
Morning/Afternoon Canyon Drive (guided): Especially for all who want a break from the wheel or those on a fly-in safari. You are taken to the two major lookout points along the Fish River Canyon. Our guide will tell you all about the canyon's fascinating geology. Refreshments, a light snack, and park entrance fees are included.	Consult the reception for departure times	±3hrs	1600.00
Sundowner Drive in Gondwana Canyon Park (guided): This drive is the perfect opportunity for you to acquaint yourself with Gondwana Canyon Park. This tour does not include the Fish River Canyon. Refreshments and a light snack are included.	2-3hrs before sunset	±2-3hrs	870.00
Sundowner Walk (escorted): Everyone is invited to wrap up the day with a short excursion to our very own 'local' mountain, where we have a drink and watch the sun go down. Refreshments will be charged to the room.	30 min before sunset	Return after sunset	Free of charge
Night Walk (short, guided walk, only bookable directly at the Lodge). Prepare to be amazed by the sight of scorpions or other nocturnal creatures glowing in the dark under UV light.	after dinner	±45 min	290.00
4 x 4 //Garas Drive (unguided): This self-drive activity takes you on marked roads through Canyon Gondwana Park. A trail map is provided	In your own time	± 2-3hrs	park fee
Transfer Karios Airstrip (return)	On request	6km one way	190.00
Transfer Canyon Lodge to Hiker's Point (Hobas) (max 6 pax per vehicle, incl. luggage)	On request	25km one way	1440.00 per vehicle
Transfer Canyon Lodge to Ai-Ais (max 6 pax per vehicle, incl. luggage)	On request	60km one way	2880.00 per vehicle





CANYON VILLAGE

20 KM EAST OF THE FISH RIVER CANYON ON THE C37 (FISH RIVER CANYON)

CANYON VILLAGE All rates N\$ and include VAT & levies Rate validity 01.11.2025 - 31.10.2026	RATE N\$ PP
Double/twin/triple/family room - sharing: bed & breakfast pp/night.	1995.00
Single room: bed & breakfast pp/night.	2493.75
Breakfast pp - buffet	270.00
Dinner pp	415.00
Light Lunch pp - alternatively à la carte at the lodge	228.00
Full 3 Course Lunch pp - alternatively à la carte at the lodge	341.00
Lunch pack pp	226.00

42 ROOMS: 35 TWINS, 3 INTER-LEADING FAMILY ROOMS & 4 TRIPLE ROOMS

3 ROOMS ARE SUITABLE FOR GUESTS WITH RESTRICTED MOBILITY

FAMILY ROOM CONFIGURATION: 3X INTERLEADING FAMILY ROOMS (2 ADULTS & 2 KIDS OR 4 ADULTS) 4X TRIPLE ROOMS (2 ADULTS & 1 CHILD OR 3 ADULTS)

ACTIVITIES AND TRANSFERS FOR CANYON VILLAGE

ACTIVITIES ARE SUBJECT TO AVAILABILITY. PRICES MAY VARY ALL RATES ARE N\$ PER PERSON.

ANY CHANGES IN NATIONAL PARK FEES WILL BE REFLECTED IN OUR RATES ACCORDINGLY.

DESCRIPTION	DEPARTURE	DURATION	RATE N\$ PP
Morning Walk (guided): This hike (about 6 km) takes you right into Gondwana Canyon Park. You are accompanied by a guide who will gladly share his knowledge about the fascinating desert landscape. This tour is not going to the Fish River Canyon.	± 07:30 AM	±2-3hr	285.00
Sunrise Hike (guided): We drive you to a spot with a grand view and watch the sunrise while enjoying coffee and tea. Then we walk back the short distance to the lodge. This tour is not going to the Fish River Canyon.	30 min before sunrise	±3hrs	535.00
The trail from the Village to the Lodge or vice versa (unguided): A hiking trail takes you from Canyon Village up to a mountain plateau with a breathtaking view of the vast plains adjacent to the canyon. At 'Archway Rock', you start to make your way back into the plain and to the lodge.	In your own time	±2-3hrs	Free of charge
Morning/Afternoon Canyon Drive (guided): Especially for all who want a break from the wheel or those on a fly-in safari. You are taken to the two major lookout points along the Fish River Canyon. Our guide will tell you all about the canyon's fascinating geology. Refreshments, a light snack, and park entrance fees are included.	Consult the reception for departure times	±3hrs	1600.00
Sundowner Drive in Gondwana Canyon Park (guided): This drive is the perfect opportunity for you to acquaint yourself with Gondwana Canyon Park. You will learn fascinating facts about geology and the adaptability of flora and fauna. This tour does not include the Fish River Canyon. Refreshments and a light snack are included.	2-3hrs before sunset	±2-3hrs	870.00
Sundowner Walk (escorted): Everyone is invited to wrap up the day with a short excursion to our very own 'local' mountain, where we have a drink and watch the sun go down. Refreshments will be charged to the room.	30 min before sunset	Return after sunset	free of charge
Night Walk (short, guided walk, only bookable directly at the Lodge). Prepare to be amazed by the sight of scorpions or other nocturnal creatures glowing in the dark under UV light.	after dinner	±45 min	290.00
4 x 4 //Garas Drive (unguided): This self-drive activity takes you on marked roads through Canyon Gondwana Park. A trail map is provided	In your own time	± 2-3hrs	park fee
Transfer Karios Airstrip (return)	On request	6km one way	190.00
Transfer Canyon Village to Hiker's Point (Hobas) (max 6 pax per vehicle, incl. luggage)	On request	25km one way	1440.00 per vehicle
Transfer Canyon Village to Ai-Ais (max 6 pax per vehicle, incl. luggage)	On request	60km one way	2880.00 per vehicle





CANYON ROADHOUSE & CAMPING

20 KM EAST OF THE FISH RIVER CANYON ON THE C37 (FISH RIVER CANYON)

CANYON ROADHOUSE All rates N\$ and include VAT & levies Rate validity 01.11.2025 - 31.10.2026	RATE N\$ PP
Double/twin/triple/family room - sharing: bed & breakfast pp/night.	2512.00
Single room - bed & breakfast pp/night.	3140.00
Breakfast pp - buffet	270.00
Dinner pp - alternatively à la carte at the lodge	572.00
Light Lunch pp - alternatively à la carte at the lodge	228.00
Full 3 Course Lunch pp - alternatively à la carte at the lodge	341.00
Lunch pack pp	226.00
Canyon Road Campsite pp/night.	341.00

24 ROOMS: 13 TWIN, 6 INTER-LEADING, 3 TRIPLE, 1 4-BEDDED FAMILY ROOM, 1 DOUBLE & **12 CAMPSITES**
FAMILY ROOM CONFIGURATION: 3X INTER-LEADING (2 ADULTS & 2 KIDS OR 4 ADULTS) 3X TRIPLE ROOMS
 (2 ADULTS & 1 CHILD OR 3 ADULTS)

ACTIVITIES AT CANYON ROADHOUSE

ACTIVITIES ARE SUBJECT TO AVAILABILITY. PRICES MAY VARY. ALL RATES ARE N\$ PER PERSON.
 ANY CHANGES IN NATIONAL PARK FEES WILL BE REFLECTED IN OUR RATES ACCORDINGLY.

GUESTS ARE WELCOME TO TAKE PART IN THE ACTIVITIES OFFERED AT CANYON LODGE OR CANYON VILLAGE.
 GUESTS MUST ARRANGE THEIR OWN TRANSPORT TO CANYON LODGE OR CANYON VILLAGE.

DESCRIPTION	DEPARTURE	DURATION	RATE N\$ PP
Morning Walk (guided): This hike (about 6 km) takes you right into Gondwana Canyon Park. You are accompanied by a guide who will gladly share his knowledge about the fascinating desert landscape. This tour is not going to the Fish River Canyon.	± 07:30 AM. Starting point: Canyon Lodge	±2-3hr	285.00
Sunrise Hike (guided): We drive you to a spot with a grand view and watch the sunrise while enjoying coffee and tea. Then we walk back the short distance to the lodge. This tour is not going to the Fish River Canyon.	30 minutes before sunrise. Starting point: Canyon Lodge	±3hrs	535.00
Morning/Afternoon Canyon Drive (guided): Especially for guests who want a break from the wheel or those on a fly-in safari. You are taken to the two major lookout points along the Fish River Canyon . Our guide will tell you all about the canyon's fascinating geology. Refreshments, a light snack, and park entrance fees are included.	Consult the reception for departure times. Starting point: Canyon Lodge.	±3hrs	1600.00
Sundowner Drive in Gondwana Canyon Park (guided): The three-hour drive is the perfect opportunity for you to acquaint yourself with Gondwana Canyon Park, its geology, flora, and fauna. This tour does not include the Fish River Canyon. Refreshments and a light snack are included.	2- 3 hours before sunset, Starting point: Canyon Lodge / Village	±2-3hrs	870.00
4 x 4 //Garas Drive (unguided): This self-drive activity takes you on marked roads through Canyon Gondwana Park. A trail map is provided	In your own time	± 2-3hrs	Park fees
Hiking Trail (unguided): Stretch your legs and enjoy the beautiful surroundings by making use of our marked walking trail (no map provided).	Own time	2-3hrs	Free of charge





NAMIB DESERT LODGE, CAMPING2GO & CAMPING

60 KM NORTH OF SESRIEM ON THE C 19 (SOSSUSVLEI AREA)

NAMIB DESERT LODGE	RATE N\$ PP
All rates N\$ and include VAT & levies Rate validity 01.11.2025 - 31.10.2026	
Double/twin/triple/family room - sharing: bed & breakfast pp/night.	2398.00
Single room - bed & breakfast pp/night.	2997.50
Breakfast pp - buffet at Namib Desert Lodge	284.00
Dinner pp - buffet	415.00
Boma/Dune Dinner pp - min 10 Pax	1452.00
Boma/Dune Dinner (BBQ) in combination with Sundowner Drive, including refreshments and transfer to lodge, pp - min 10 pax	1964.00
Light Lunch pp - alternatively à la carte at the lodge	228.00
Full 3 Course Lunch pp - alternatively à la carte at the lodge	341.00
Lunch pack pp	226.00
Camping2Go - Self-catering tents with en-suite bathrooms - sharing: bed only, pp/night.	1084.00
Camping2Go - Self-catering tents with en-suite bathrooms - single: bed only, pp/night.	2166.00
Namib Desert Campsite pp/night	341.00

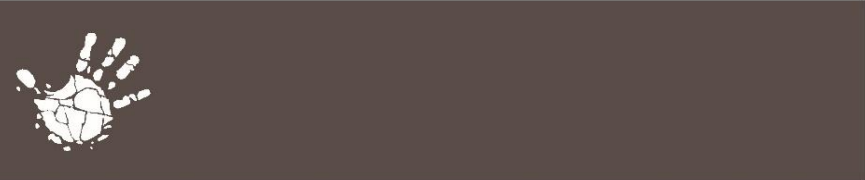
66 ROOMS: 53 TWIN ROOMS, 5 DOUBLE ROOMS, 4 TRIPLE ROOMS, 4 FAMILY ROOMS (**1 OF THE ROOMS IS SUITABLE FOR GUESTS WITH RESTRICTED MOBILITY**) 8 CAMPING2GO SAFARI TENTS & 3 CAMPSITES
FAMILY ROOM CONFIGURATION: 4x FAMILY ROOMS (2 ADULTS & 2 KIDS OR 4 ADULTS) 4x TRIPLE ROOMS (2 ADULTS & 1 CHILD OR 3 ADULTS) 8x CAMPING2GO SAFARI TENTS (2 ADULTS & 2 KIDS OR 4 ADULTS)

ACTIVITIES AND TRANSFERS FOR NAMIB DESERT LODGE

ACTIVITIES ARE SUBJECT TO AVAILABILITY. PRICES MAY VARY. ALL RATES ARE N\$ PER PERSON.

DESCRIPTION	DEPARTURE	DURATION	RATE N\$ PP
Sundowner Dune Drive (guided, min. 4 persons): Discover the fossilized dunes, the red dunes above the plateau, and the many other wonders of the Namib Desert on this drive around Gondwana Namib Park. Refreshments and a light snack are included.	±2hrs before sunset	±2-3hrs	935.00
Morning Dune Drive (guided, min. 4 persons): Discover the fossilized dunes, the red dunes above the plateau, and the many other wonders of the Namib Desert on this drive around Gondwana Namib Park. Refreshments (tea/coffee) and a light snack (rusks) are included.	±30 min before sunrise	±2-3hrs	755.00
Sossusvlei Excursion (guided): Guided half-day excursion to Sossusvlei, incl. entrance fees to the National Park, brunch, and refreshments. Pre-booking essential.	1hr before sunrise	±5-6hrs	3020.00
Hiking Trails (un-guided): Explore the Namib Desert on foot on your own initiative. A trail map is available at the reception.	In your own time, return before nightfall	own time	Free of charge
Desert Night Walk (short, guided walk, only bookable directly at the Lodge). Prepare to be amazed by the sight of scorpions or other nocturnal creatures glowing in the dark under UV light.	after dinner	±45 min	290.00
Transfer to Namib Naukluft Lodge Airstrip (return) max 6 pax per vehicle	On request	±21 min	1275.00 per vehicle
Transfer to Solitaire Lodge Airstrip (return) max 6 pax per vehicle	On request	±35 min	1600.00 per vehicle
Transfer to Sossusvlei Lodge Airstrip (return) max 6 pax per vehicle	On request	±51 min	2555.00 per vehicle





NAMIB DUNE STAR CAMP

60 KM NORTH OF SESRIEM ON THE C 19 (SOSSUSVLEI AREA)

NAMIB DUNE STAR CAMP All rates N\$ and include VAT & levies Rate validity 01.11.2025 - 31.10.2026	RATE N\$ PP
Double/triple room - sharing: bed & breakfast pp/night.	3405.00
Single room - bed & breakfast pp/night.	4256.25
Dinner pp	572.00

9 ROOMS: 2 TRIPLE, 7 DOUBLE (ONLY DOUBLE BEDS CAN BE WHEELED OUT ONTO THE BALCONY)
FAMILY ROOM CONFIGURATION: 2x TRIPLE ROOMS FOR 2 ADULTS & 1 CHILD ABOVE 13 YEARS OR 3 ADULTS

NAMIB DUNE STAR CAMP – ITINERARY ONE-NIGHT STAY ONLY, IDEALLY PAIRED WITH NAMIB DESERT LODGE OR THE DESERT GRACE LODGE

DAY 1

CHECK-IN AT NAMIB DESERT LODGE:
(KINDLY NOTE THAT GUESTS ARRIVING LATE FOR THE SHUTTLE DEPARTING TO DUNE STAR CAMP WILL BE CHARGED A SURCHARGE OF N\$130.00 PER PERSON.)

PLEASE NOTE, AN OVERNIGHT BAG IS REQUIRED FOR THE ONE-NIGHT STAY EXPERIENCE.

JUNE - AUGUST	ARRIVAL LATEST AT 15:45 TO DEPART FOR NAMIB DUNE STAR CAMP AT 16:00
SEPTEMBER - NOVEMBER	ARRIVAL LATEST AT 16:45 TO DEPART FOR NAMIB DUNE STAR CAMP AT 17:00
DECEMBER - FEBRUARY	ARRIVAL LATEST AT 17:15 TO DEPART FOR NAMIB DUNE STAR CAMP AT 17:30
MARCH-MAY	ARRIVAL LATEST AT 16:45 TO DEPART FOR NAMIB DUNE STAR CAMP AT 17:00

YOU WILL BE TRANSFERRED TO NAMIB DUNE STAR CAMP WITH YOUR OVERNIGHT LUGGAGE IN A 4X4 VEHICLE. ANY REMAINING LUGGAGE CAN BE STORED AT THE NAMIB DESERT LODGE. YOU ARE WELCOME TO TAKE PART IN A DUNE WALK OF APPROXIMATELY 1 HOUR AT NAMIB DUNE STAR CAMP.

DAY 2

EARLY START WITH COFFEE OR TEA AT THE BUNGALOW, FOLLOWED BY A GUIDED SUNRISE WALK (APPROXIMATELY 1 HOUR) IN THE SURROUNDING DUNES OF THE NAMIB DUNE STAR CAMP. AFTER THE WALK, YOU WILL HAVE TIME TO FRESHEN UP AND ENJOY A HEARTY BREAKFAST AT NAMIB DUNE STAR CAMP.

KINDLY NOTE THAT THE SHUTTLE TO NAMIB DESERT LODGE ONLY DEPARTS FROM NAMIB DUNE STAR CAMP BETWEEN 8:30 AND 9:00 A.M. (UNFORTUNATELY, NO EARLIER SHUTTLE IS AVAILABLE). PLEASE PLAN YOUR FURTHER JOURNEY ON THIS DAY OR EXCURSIONS TO SOSSUSVLEI ACCORDINGLY.

KEEP IN MIND:

TO MAKE THE EXCURSION WORTHWHILE AND ENJOYABLE, WE RECOMMEND A ONE-NIGHT STAY AT NAMIB DESERT LODGE, FOLLOWED BY A NIGHT AT NAMIB DUNE STAR CAMP.

WHEN STAYING AT NAMIB DESERT LODGE, PLEASE NOTE THAT CHECK-OUT TIME IS 10:00 A.M. NO DAYROOMS ARE AVAILABLE AT NAMIB DESERT LODGE.

AT NAMIB DUNE STAR CAMP, HOT WATER AND ELECTRICITY ARE LIMITED, AND NO FAN, AIR CONDITIONING, OR PLUG POINTS (POWER SOCKETS) ARE AVAILABLE. FOR THE NATURE WALK, REMEMBER TO WEAR COMFORTABLE SHOES AND A HAT. GUIDES ARE ENGLISH-SPEAKING. YOUR RATE N\$ PP FOR THE NAMIB DUNE STAR CAMP IS BED AND BREAKFAST BASED, THEREFORE, DINNERS, DRINKS, AND ANY EXTRAS INCURRED DURING YOUR STAY MUST BE PAID AT THE RECEPTION OF NAMIB DESERT LODGE ON DEPARTURE. GONDWANA IS KNOWN FOR HAVING CHILD-FRIENDLY LODGES. WE REGRET THAT THE NAMIB DUNE STAR CAMP IS NOT SUITABLE FOR CHILDREN AGED 13 YEARS OR YOUNGER.





THE DESERT GRACE

60 KM NORTH OF SESRIEM ON THE C 19 (SOSSUSVLEI AREA)

THE DESERT GRACE	RATE N\$ PP
All rates N\$ and include VAT & levies Rate validity 01.11.2025 - 31.10.2026	
Double/twin/triple/family room - sharing: bed & breakfast pp/night.	5391.00
Single room - bed & breakfast pp/night.	6738.75
Breakfast pp - buffet	284.00
Dinner pp	572.00
Boma/Dune Dinner pp - min 10 Pax	1386.00
Boma/Dune Dinner (BBQ) in combination with Sundowner Drive, including refreshments and transfer to lodge, pp - min 10 pax	1964.00
Light Lunch pp - alternatively à la carte at the lodge	228.00
Full 3 Course Lunch pp - alternatively à la carte at the lodge	341.00
Lunch pack pp	226.00

24 BUNGALOWS (EACH WITH A PRIVATE PLUNGE POOL): 10 TWIN BUNGALOWS, 10 DOUBLE BUNGALOWS, 4 FAMILY BUNGALOWS

FAMILY ROOM CONFIGURATION: 4x 4-BEDDED FAMILY ROOMS (2 ADULTS & 2 CHILDREN OR 4 ADULTS, SHARED BATHROOM)

ACTIVITIES AND TRANSFERS FOR THE DESERT GRACE

ACTIVITIES ARE SUBJECT TO AVAILABILITY. PRICES MAY VARY. ALL RATES ARE N\$ PER PERSON. ANY CHANGES IN NATIONAL PARK FEES WILL BE REFLECTED IN OUR RATES ACCORDINGLY.

DESCRIPTION	DEPARTURE	DURATION	RATE N\$ PP
Morning Dune Drive or Sundowner Dune Drive (guided): Discover the dunes and the many other wonders of the Namib Desert on this drive around Gondwana Namib Park. Refreshments and a light snack are included.	Sunrise / 2 hrs before sunset	±2-3hrs	935.00
Sossusvlei Excursion (guided): Guided half-day excursion to Sossusvlei, incl. entrance fees to the National Park, brunch, and refreshments. Pre-booking essential.	1hr before sunrise	±5-6hrs	3020.00
Walking Trails (unguided): Get a closer look at the Namib in your own time by making use of our 3km, 5km, or 7km walking trails. Please enquire at reception.	In your own time, return before sunset	Own time	Free of charge
Desert Night Walk (short, guided walk, only bookable directly at the Lodge). Prepare to be amazed by the sight of scorpions or other nocturnal creatures glowing in the dark under UV light.	after dinner	±45 min	290.00
Transfer to Namib Naukluft Lodge Airstrip (return) max 6 pax per vehicle	On request	±21 min	1275.00 per vehicle
Transfer to Solitaire Lodge Airstrip (return) max 6 pax per vehicle	On request	±35 min	1600.00 per vehicle
Transfer to Sossusvlei Lodge Airstrip (return) max 6 pax per vehicle	On request	±51 min	2555.00 per vehicle





THE DESERT WHISPER

60 KM NORTH OF SESRIEM ON THE C 19 (SOSSUSVLEI AREA)

- The Desert Whisper is part of the Gondwana Secret Collection, based in the Namib Desert.
- There is only one Desert Whisper. A spacious single-story suite, atop a solitary mountain, including an open-plan kitchen, dining, and lounge area; an en suite room with balcony, and an outdoor area fully equipped with barbecue facilities, as well as a private plunge pool.
- Check-in is at 14:00, and Check-out time is 10:00 local time.
- Desert Whisper is a two-guest exclusive lodge. Children under 14 years old are not permitted, but children aged 14 years and older are welcome if the total number of guests is two.
- It is fully inclusive of all meals and drinks, with exclusive activities on offer within the Gondwana Namib Park (Dune Drives, and hiking activities). Pre-booking for a Sossusvlei excursion is essential and is enjoyed on a shared basis.
- There is an equipped kitchen and a fully stocked bar, as well as barbecue facilities in a terraced outdoor space. Meals are pre-prepared according to guests' preferences.
- To guarantee complete exclusivity and intimacy, there is no service staff or chef based at the Desert Whisper during guests stay, however, guests always have radio contact with their host.
- A private chef can be arranged upon request to prepare and serve dinner.
- Free Wi-Fi is available, and USB ports for charging equipment are provided.
- The Desert Whisper is equipped with air conditioning.

THE DESERT WHISPER	RATE N\$
All rates N\$ and include VAT & levies Rate validity 01.11.2025 - 31.10.2026	
Per room/night, fully inclusive, max 2 pax	30250.00

ACTIVITIES AND TRANSFERS FOR THE DESERT WHISPER

DESCRIPTION	DEPARTURE	DURATION	RATE N\$ PP
Morning Dune Drive or Sundowner Dune Drive (guided): Discover the dunes and the many other wonders of the Namib Desert on this drive around Gondwana Namib Park. Refreshments and a light snack are included.	Sunrise / 2 hrs before sunset	±2-3hrs	Included
Sossusvlei Excursion (guided): Guided half-day excursion to Sossusvlei, incl. entrance fees to the National Park, brunch, and refreshments. Pre-booking essential.	1hr before sunrise	±5-6hrs	Included
Walking Trails (unguided): Get a closer look at the Namib in your own time by making use of our 3km, 5km, or 7km walking trails. Please enquire at reception.	In your own time, return before sunset	Own time	Included
Desert Night Walk (short, guided walk, only bookable directly at the Lodge): Prepare to be amazed by the sight of scorpions or other nocturnal creatures glowing in the dark under UV light.	after dinner	±45 min	Included
Transfer to Namib Naukluft Lodge Airstrip (return) min 2 pax per vehicle	On request	±21 min	Included
Transfer to Solitaire Lodge Airstrip (return) min 2 pax per vehicle	On request	±35 min	Included
Transfer to Sossusvlei Lodge Airstrip (return) min 2 pax per vehicle	On request	±51 min	Included

TRANSFERS ARE SUBJECT TO AVAILABILITY AND NEED TO BE PRE-BOOKED. PRICES MAY VARY.





LUNA NAMIB COLLECTION

LOCATION: NAMIB RAND AREA, OFF THE C27 (70 KM SOUTH OF SESRIEM | NAMIB SAND SEA)

- The Luna Namib Collection stands as a distinct, elevated offering within Gondwana’s portfolio, separate from the Secret Collection yet equally inspired by the vast beauty of the Namib Desert.
- Ten exclusive Pods offer privacy and uninterrupted desert immersion.
- The distance from the landing area (pickup/entrance) to the Pods is approximately 54 km. Guests enjoy a scenic drive with their dedicated host/guide in a private Pod vehicle.
- Guests are welcomed at a designated reception area, where they meet their dedicated Pod team.
- Each Pod is supported by a four-person team comprising a chef, guide, housekeeper and host.
- Amenities, bedding, food, and beverage experiences are curated in alignment with the lunar cycles, with additional off-menu items available to accommodate individual preferences.
- Every detail is thoughtfully anticipated and seamlessly delivered, ensuring a refined, all-inclusive experience where guests need not lift a finger.
- A selection of dining options is available, tailored to guest preferences and experiences planned during the stay.
- Cocktails, beverages, and meals are served from the Pod’s private bar and kitchen area.
- Each unit has a private waterhole for wildlife viewing.
- A minimum stay of two nights is recommended to allow time to savour the full scope of experiences on offer.
- Selected locations within the reserve provide opportunities for secluded outdoor seating and curated relaxation moments.
- Opening with 2 doubles in July and 1 family unit in September.

Luna Namib Collection All rates N\$ and include VAT & levies Rate validity 01.11.2025 – 31.10.2026	RACK RATE PER UNIT
King Unit: Fully Inclusive – max 2 pax per night	75000.00
Family Unit: Fully Inclusive – max 4 pax per night (2 adults & 2 kids only)	65000.00
Twin Unit: Fully Inclusive – max 2 pax per night	50000.00

ACTIVITIES & TRANSFERS FOR THE LUNA NAMIB COLLECTION

DESCRIPTION	DEPARTURE	DURATION
Private Dune Expeditions (sunrise or sundowner): Guided exploration of the Namib Sea	on request	TBA
Sundowner Dune Drive (guided):	on request	TBA
Sossusvlei Excursion (guided): Guided half-day excursion to Sossusvlei, incl. entrance fees to the National Park, brunch and refreshments. Pre-booking is essential. *Advance booking essential	1 hr before sunrise	±5-6hrs
Private Desert Charter Flights	on request	TBA
Hot Air Ballooning	on request	TBA
Professional stargazing sessions	on request	TBA
Curated photographic journeys: Expert-guided, highly personalised photography experiences designed to help guests capture the landscape, light, wildlife, and atmosphere	on request	TBA
Unguided desert immersion walks: Access to private walking trails across the reserve	on request	TBA
Private transfer to Namib Naukluft Airstrip (return) max 6 persons per vehicle	on request	TBA
Private transfer to Solitaire Lodge Airstrip (return) max 6 persons per vehicle	on request	TBA
Private transfer to Sossusvlei Lodge Airstrip (return) max 6 persons per vehicle	on request	TBA

Activities are included as follows:

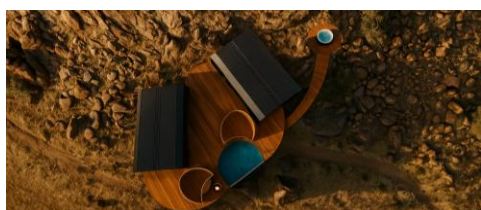
1 night – all on site activities

2 nights – all on site activities, spa treatments, Sossusvlei excursion

3 nights, all on site activities, spa treatments, Sossusvlei excursion, Scenic Balloon Flight

4 +night – all on site activities, spa treatments, Sossusvlei excursion, Scenic Balloon Flight, Helicopter Activity

Please note that the balloon and helicopter activities are not booked on exclusive basis unless premium is charged. Ballooning is weather dependent. (helicopter seats 4 people)





THE DELIGHT HOTEL

CORNER OF THEO-BEN GURIRAB AVENUE / NATHANIEL MAXUILILI STREET (SWAKOPMUND)

THE DELIGHT SWAKOPMUND All rates N\$ and include VAT & levies Rate validity 01.11.2025 - 31.10.2026	RATE N\$ PP
Double/twin/family room - sharing: bed & breakfast pp/night.	1987.00
Single room - bed & breakfast pp/night.	2483.75
Breakfast pp – buffet	323.00
Lunch pack pp	226.00

54 ROOMS: 44 TWIN ROOMS (INCL. 1 WHEELCHAIR FRIENDLY ROOM) & 10 FAMILY ROOMS

FAMILY ROOM CONFIGURATION: 10x 4-BEDDED FAMILY ROOMS (2 ADULTS & 2 KIDS OR 4 ADULTS, SHARED BATHROOM)

THE DELIGHT HOTEL OFFERS A DEDICATED HOST TO ASSIST GUESTS WITH ACTIVITY BOOKINGS AND DINNER RESERVATIONS, ENSURING A SEAMLESS AND PERSONALIZED EXPERIENCE.

CONFERENCING FACILITIES ARE SUBJECT TO AVAILABILITY AND NEED TO BE PRE-BOOKED WITH corporate@gcnam.com





THE PEARLS BEACH PODS

16 MOLENWEG (SWAKOPMUND)

- The Pearls Beach Pods are part of the Gondwana Secret Collection, based in Swakopmund.
- There are two pods, The Jetty and The Mole.
- The Jetty accommodates up to six guests (3 bedrooms), and The Mole for up to for guests (2 bedrooms).
- Check-in is at 14:00, and check-out time is 10:00 local time.
- Children up to 5 years old are free of charge; children 6+ years old are considered an adult occupant.
- The stay fully includes all food and beverages that the pod is pre-stocked with.
- Meals are pre-prepared according to the guests' preferences. With a fully equipped kitchen and well-provisioned bar, guests are at leisure to cater to themselves.
- To guarantee complete exclusivity and intimacy, there is no service staff or chef based at the Pearls Beach Pods during the guests' stay, however, guests always have access to contact their host.
- A dedicated host is available to assist with booking activities, dinner reservations, and personalized service arrangements.
- A private chef can be arranged upon request to prepare and serve meals at no additional cost.
- Free Wi-Fi is available, and USB ports for charging equipment are provided.
- The Pearls are equipped with air conditioning.

THE PEARLS BEACH PODS – THE JETTY All rates N\$ and include VAT & levies Rate validity 01.11.2025 - 31.10.2026	RATE N\$
Per room/night, inclusive of food and beverage, max 2 pax/room	30250.00
Supplement for additional room/night (2 rooms booked), inclusive of food and beverage, max 2 pax/room	18150.00
Supplement for additional room/night (3 rooms booked), inclusive of food and beverage, max 2 pax/room	12100.00

*No single supplement for The Pearls Beach Pods and can accommodate max 2 pax/room

THE PEARLS BEACH PODS – THE MOLE All rates N\$ and include VAT & levies Rate validity 01.11.2025 - 31.10.2026	RATE N\$
Per room/night, inclusive of food and beverage, max 2 pax/room	30250.00
Supplement for additional room/night (2 rooms booked), inclusive of food and beverage, max 2 pax/room	18150.00

*No single supplement for The Pearls Beach Pods and can accommodate max 2 pax/room





DAMARA MOPANE LODGE

20 KM EAST OF KHORIXAS ON THE C 39 (DAMARALAND)

DAMARA MOPANE LODGE All rates N\$ and include VAT & levies Rate validity 01.11.2025 - 31.10.2026	RATE N\$ PP
Double/twin room - sharing: bed & breakfast pp/night.	2284.00
Single room: bed & breakfast pp/night	2855.00
Breakfast pp - buffet	284.00
Dinner pp - buffet	415.00
Light Lunch pp - pre-booked, alternatively à la carte at the lodge	228.00
Full 3 Course Lunch pp - alternatively à la carte at the lodge	341.00
Lunch pack pp	226.00

60 TWIN BUNGALOWS: 60 TWIN ROOMS (INCLU. 2X WHEELCHAIR FRIENDLY INTER-LEADING TWIN ROOMS)

FAMILY ROOM CONFIGURATION: 5X INTER-LEADING TWIN FAMILY ROOMS (2 ADULTS & 2 KIDS OR 4 ADULTS, EACH ROOM HAS IT'S OWN BATHROOM)

ACTIVITIES AT DAMARA MOPANE LODGE

ACTIVITIES ARE SUBJECT TO AVAILABILITY. PRICES MAY VARY. ALL RATES ARE N\$ PER PERSON.

DESCRIPTION	DEPARTURE	DURATION	RATE N\$ PP
Damara Elephant Explorer (guided): Embark on a full-day guided Damaraland journey, tracking desert-adapted elephants and enjoy the region's scenic beauty. This excursion includes a visit to a traditional Damara cultural village. Coffee/tea, snacks, refreshments, a light lunch, and entrance fees are included.	± 07h00 (enquire at reception)	±9hrs	3300.00
Birding Morning or Afternoon Walk (guided): Join our guides for an exciting tour through the gardens to spot the resident or migratory birdlife that often visits. Children of all ages are welcome.	30 min after sunrise and 1.5 hours before sunset	approx. 1 - 1.5 hrs	250.00
Sundowner Walk (escorted): A highlight at the end of the day is to ascend the hill to a viewing platform for a sweeping vista of the mopane woodland illuminated by the setting sun. Beverages and basic snacks are provided, and only drinks are charged to the room.	45min before sunset	own time	free of charge (only drinks will be charged)
Hiking Trails (unguided): Explore the surrounding hills on foot and your initiative (Mountain Trail). Or choose the Valley Trail as an easier option. The trails are marked.	in your own time	own time	free of charge





PALMWAG LODGE, CAMPING2GO & CAMPING

A FEW KILOMETRES NORTH OF THE C43/C39 JUNCTION (DAMARALAND)

PALMWAG LODGE All rates N\$ and include VAT & levies Rate validity 01.11.2025 - 31.10.2026	RACK RATE N\$ PP
Standard room double/twin - sharing: bed & breakfast pp/night.	2807.00
Standard room - single: bed & breakfast pp/night.	3508.75
Comfort room double/twin/triple/family - sharing: bed & breakfast pp/night.	3449.00
Comfort room - single: bed & breakfast pp/night	4311.25
Breakfast pp - buffet	284.00
Dinner pp	415.00
Light Lunch pp	228.00
Full 3 Course Lunch pp	341.00
Lunch pack pp	226.00
Camping2Go - Self-catering tents with en-suite bathrooms - sharing: bed only, pp/night.	1084.00
Camping2Go - Self-catering tents with en-suite bathrooms - single: bed only, pp/night.	2166.00
Palmwag Campsite pp/night	341.00

22 ROOMS: 10 STANDARD TWIN ROOMS, 10 COMFORT TWIN ROOMS & 2 COMFORT FAMILY UNTIS, 8 CAMPING2GO TENTS & 18 CAMPSITES

FAMILY ROOM CONFIGURATION: 2X COMFORT FAMILY ROOMS (2 ADULTS & 2 KIDS OR 4 ADULTS)

ACTIVITIES AND TRANSFERS FOR PALMWAG LODGE

ACTIVITIES ARE SUBJECT TO AVAILABILITY. PRICES MAY VARY. ALL RATES ARE N\$ PER PERSON.

DESCRIPTION	DEPARTURE	DURATION	RATE N\$ PP
Morning/Afternoon Half-Day Scenic Drive (guided): Explore the amazing Palmwag concession. Refreshments and light snacks are included.	± 07:00 AM / ±3hrs before sunset	±3 hrs	1355.00
Full-Day Damaraland Excursion (min 4 pax): This Full-Day scenic drive in the Palmwag Concession is the best way to experience beautiful Damaraland	± 07:00 AM	Full Day	3555.00
Under Canvas Sleep-out: Discover this piece of protected land with an experienced guide by your side. On the drive through the vast landscapes of Damaraland you might encounter some of the free-roaming wildlife populations.	Sleep-out	Sleep-out	4995.00
Morning Hike 2km (guided): Discover the smaller wildlife that roams the area. Your guide will show you the different tracks and talk about the animals that live in the concession.	± 07:00 AM	±1.5 hrs	400.00
Morning Hike 5km (guided): Discover the smaller wildlife that roams the area. Your guide will show you the different tracks and talk about the animals that live in the concession.	± 07:00 AM	±3 hrs	485.00
Half-Day Rhino Tracking (guided, min 2 pax): Guests are taken into the concession with our open-game drive vehicles. Once closer to the rhinos, tracking continues foot. This activity is not suitable for children under 12 years.	± 06:00 AM / 06:30 AM	Half-day	3975.00
Welwitschia Walk (unguided): Discover the local flora in your own time	In your own time	±1.5 hrs	free of charge
Transfer to Palmwag Airstrip (return) max 6 pax per vehicle	On request	±5 mins	free of charge





OMARUNGA EPUPA-FALLS CAMP & CAMPING

EPUPA FALLS (KAOKOLAND)

OMARUNGA EPUPA-FALLS CAMP All rates N\$ and include VAT & levies Rate validity 01.11.2025 - 31.10.2026	RACK RATE N\$ PP
Double/twin/triple/family room - sharing: bed & breakfast pp/night.	2525.00
Single room: bed & breakfast pp/night	3156.25
Breakfast pp - buffet	284.00
Dinner pp	415.00
Light Lunch pp834656	228.00
Full 3 Course Lunch pp	341.00
Lunch pack pp	226.00
Camping pp/night	341.00

14 ROOMS: 12 TWINS ROOMS, 1 DOUBLE ROOM, 1 FAMILY ROOM & 10 CAMPSITES

FAMILY ROOM CONFIGURATION: 1X FAMILY ROOM (2 ADULTS & 2 KIDS ONLY - BUNK BEDS)

ACTIVITIES AND TRANSFERS AT OMARUNGA EPUPA-FALLS CAMP

ACTIVITIES ARE SUBJECT TO AVAILABILITY. PRICES MAY VARY. ALL RATES ARE N\$ PER PERSON.

DESCRIPTION	DEPARTURE	DURATION	RATE N\$ PP
Visit a Himba village (guided): Experience the traditional way of life of the Himba in the Epupa area. Included refreshments and a light snack.	+8:00 am Please enquire at reception	±3-4hrs	1195.00
Sundowner Walk (guided): Enjoy a Scenic sundowner hill above the Epupa Falls, where snacks and drinks will be provided.	+5:00 pm Please enquire at reception	±2hrs	475.00
Fly-In Day Visit (visit to a Himba village and excursion to the Epupa Falls): Guests are collected from the airstrip and taken to a nearby Himba village for an authentic cultural experience. Light snacks and refreshments are included.	On request	On request	1860.00
Kunene River Walk (guided): Walk along the banks of the Kunene River. This is also a great walk for bird enthusiasts.	On request	±2 hrs	445.00
River Rafting on the Kunene River (guided): Fun and Excitement! Explore the Kunene River by rafting boat.	Please enquire for more details	±2.5hrs	on request
Transfer to Epupa Airstrip (return) max. 6 pax per car, including luggage	On request	±3km one way	1210.00 per vehicle





ETOSHA SAFARI LODGE

10 KM SOUTH OF ANDERSSON GATE ON THE C 38 (ETOSHA NATIONAL PARK)

ETOSHA SAFARI LODGE All rates N\$ and include VAT & levies Rate validity 01.11.2025 - 31.10.2026	RACK RATE N\$ PP
Double/twin/triple/family room - sharing: bed & breakfast pp/night.	3383.00
Single room: bed & breakfast pp/night	4228.75
Breakfast pp - buffet	284.00
Dinner pp - buffet	572.00
Light Lunch pp - alternatively à la carte at the lodge	228.00
Full 3 Course Lunch pp - alternatively à la carte at the lodge	341.00
Lunch pack pp	226.00

65 BUNGALOWS: 5 FAMILY ROOMS & 60 TWIN ROOMS

FAMILY ROOM CONFIGURATION: 5x 4-BEDDED FAMILY ROOMS (2 ADULTS & 2 KIDS OR 4 ADULTS, SHARED BATHROOM)

ACTIVITIES AND TRANSFERS FOR ETOSHA SAFARI LODGE

ACTIVITIES ARE SUBJECT TO AVAILABILITY. PRICES MAY VARY. ALL RATES ARE N\$ PER PERSON.
ANY CHANGES IN NATIONAL PARK FEES WILL BE REFLECTED IN OUR RATES ACCORDINGLY.

DESCRIPTION	DEPARTURE	DURATION	RATE N\$ PP
Morning/Afternoon Half-Day Excursion to the Etosha National Park (guided): Explore the National Park and its amazing wildlife in a 9-seater game vehicle. Refreshments and passenger liability insurance are included. Park fees are excluded and can be settled directly at the lodge.	30 min before sunrise ±14h00 (Enquire at reception)	±5-6hrs	990.00
Full-Day Excursion to the Etosha National Park (guided): Explore the National Park and its amazing wildlife in a 9-seater game vehicle. Park fees are excluded and can be settled directly at the lodge.	30 min before sunrise	±9hrs	1300.00
Guided Walks (2 - 3.5 km): Enjoy the discovery walk through the mopane woods and learn about the indigenous plants, birds, and other wildlife. Refreshments included.	(morning or afternoon)	±1hr ±2hrs	445.00
Transfer to Okutala airstrip in an open vehicle (return)	On request	30km one way	560.00





THE EKIPA ETOSHA POD

10 KM SOUTH OF ANDERSSON GATE ON THE C 38 (ETOSHA NATIONAL PARK)

- The Etosha Pod is part of the Gondwana Secret Collection and is situated 10km south of Etosha National Park's Anderson Gate.
- There is only one Ekipa Pod. A spacious double-story suite - including an open plan kitchen, dining, and lounge area; an en suite room with balcony and an outdoor area fully equipped with barbecue facilities, as well as a private plunge pool and outdoor shower. Upstairs, a romantic and cozy en suite bedroom awaits, which can be extended by rolling out your bed onto the balcony for a 180-degree view of the sky and its beckoning constellations.
- Check-in is at 14:00 and Check-out time is 10:00 local time.
- The Ekipa Etosha Pod is a two-guest exclusive lodge. Children under 14 years old are not permitted, but children 14 years and older are welcome if the total number of guests is two.
- It is fully inclusive of all meals and drinks, with exclusive activities on offer within the property grounds and Etosha National Park
- There is an equipped kitchen and a fully stocked bar, as well as barbecue facilities in a terraced outdoor space. Meals are pre-prepared according to the preferences of the guests.
- To guarantee complete exclusivity and intimacy, there is no service staff or chef based at the Etosha Pod, during guests' stay, however, guests always have radio contact with their host.
- A private chef can be arranged upon request to prepare and serve dinner.
- Free Wi-Fi is available and USB ports for charging equipment are provided.
- The Ekipa Etosha Pod is equipped with air conditioning.

THE EKIPA ETOSHA POD All rates N\$ and include VAT & levies Rate validity 01.11.2025 - 31.10.2026	RATE N\$
Per room/night, inclusive of food and beverage, max 2 pax/room	30250.00

ACTIVITIES AND TRANSFERS FOR THE EKIPA

ACTIVITIES ARE SUBJECT TO AVAILABILITY. PRICES MAY VARY. ALL RATES ARE N\$ PER PERSON. ANY CHANGES IN NATIONAL PARK FEES WILL BE REFLECTED IN OUR RATES ACCORDINGLY.

DESCRIPTION	DEPARTURE	DURATION	RATE N\$ PP
Morning/Afternoon Half-Day Excursion to the Etosha National Park (guided): Explore the National Park and its amazing wildlife in a 4x4 game viewer with your designated guide. Park fees included.	30 min before sunrise ±14h00 (enquire at reception)	±5-6hrs	Included
Full-Day Excursion to the Etosha National Park (guided): Explore the National Park and its amazing wildlife in a 4x4 game viewer with your dedicated guide. Park fees included.	30 min before sunrise	±9hrs	Included
Guided Walks (2 - 3.5 km) Enjoy the discovery walk through the mopane woods and learn about the indigenous plants, birds, and other wildlife. Refreshments included.	(morning or afternoon)	±1hr ±2hrs	Included
Transfer to Okutala airstrip in an open vehicle (return)	On request	30km one way	Included





ETOSHA SAFARI CAMP, CAMPING2GO & CAMPING

10 KM SOUTH OF ANDERSSON GATE ON THE C 38 (ETOSHA NATIONAL PARK)

ETOSHA SAFARI CAMP All rates N\$ and include VAT & levies Rate validity 01.11.2025 - 31.10.2026	RACK RATE N\$ PP
Double/twin/triple/family room - sharing: bed & breakfast pp/night.	1980.00
Single room: bed & breakfast pp/night	2475.00
Breakfast pp - buffet at Etosha Safari Camp	284.00
Dinner pp	415.00
Light Lunch pp - alternatively à la carte at the lodge	228.00
Full 3 Course Lunch pp - alternatively à la carte at the lodge	341.00
Lunch pack pp	226.00
Camping2Go - Self-catering tents with en-suite bathrooms - sharing: bed only, pp/night.	1084.00
Camping2Go - Self-catering tents with en-suite bathrooms - single: bed only, pp/night.	2166.00
Etosha Safari Campsite pp/night	341.00

50 CHARLETS: 37 TWIN ROOMS, 3 TRIPLE ROOMS, 10 FAMILY ROOMS, 8 CAMPING2GO TENTS & 20 CAMPSITES

FAMILY ROOM CONFIGURATION: 10x FAMILY ROOMS (TWIN BUNK BEDS FOR KIDS UNDER 13 YEARS ONLY, SHARED BATHROOM), 3x TRIPLE ROOMS (2 ADULTS & 1 CHILD OR 3 ADULTS, SHARED BATHROOM)

ACTIVITIES AND TRANSFERS FOR ETOSHA SAFARI CAMP

ACTIVITIES ARE SUBJECT TO AVAILABILITY. PRICES MAY VARY. ALL RATES ARE N\$ PER PERSON.
ANY CHANGES IN NATIONAL PARK FEES WILL BE REFLECTED IN OUR RATES ACCORDINGLY.

DESCRIPTION	DEPARTURE	DURATION	RATE N\$ PP
Morning/Afternoon Half-Day Excursion to the Etosha National Park (guided): Explore the National Park and its amazing wildlife in a 24-seater game vehicle. Refreshments and passenger liability insurance are included. Park fees are excluded and can be settled directly at the lodge.	30 min before sunrise ±14h00 (enquire at reception)	±5-6hrs	990.00
Full-Day Excursion to the Etosha National Park (guided): Explore the National Park and its amazing wildlife in a 24-seater game vehicle. Refreshments, snacks, and passenger liability insurance are included. Park fees are excluded and can be settled directly at the lodge.	30 min before sunrise	±9hrs	1300.00
Guided Walks (2 - 3.5 km) Enjoy the discovery walk through the mopane woods and learn about the indigenous plants, birds, and other wildlife. Refreshments included	(morning or afternoon)	±1hr ±2hrs	445.00
Transfer to Okutala airstrip in an open vehicle (return)	On request	30km one way	560.00





ETOSHA KING NEHALE

1 KM NORTH OF KING NEHALE GATE (NORTH-WESTERN SIDE OF ETOSHA NATIONAL PARK)

ETOSHA KING NEHALE All rates N\$ and include VAT & levies Rate validity 01.11.2025 - 31.10.2026	RACK RATE N\$ PP
Double/twin/triple/family room - sharing: bed & breakfast pp/night.	3625.00
Single room: bed & breakfast pp/night	4531.25
Breakfast pp - buffet	284.00
Dinner pp	572.00
Light Lunch pp- alternatively à la carte at the lodge	228.00
Full 3 Course Lunch pp - alternatively à la carte at the lodge	341.00
Lunch pack pp	226.00

40 BUNGALOWS: 26 TWIN ROOMS & 14 FAMILY ROOMS

FAMILY ROOM CONFIGURATION: 14X FAMILY ROOMS (2 ADULTS & 2 KIDS UNDER 13 YEARS ONLY - SLEEPER COUCH & SHARED BATHROOM)

ACTIVITIES AND TRANSFERS FOR ETOSHA KING NEHALE LODGE

ACTIVITIES ARE SUBJECT TO AVAILABILITY. PRICES MAY VARY. ALL RATES ARE N\$ PER PERSON.
ANY CHANGES IN NATIONAL PARK FEES WILL BE REFLECTED IN OUR RATES ACCORDINGLY.

DESCRIPTION	DEPARTURE	DURATION	RATE N\$ PP
Morning/Afternoon Half-Day Excursion to the Etosha National Park (guided): Explore the National Park and its amazing wildlife in a 9-seater game vehicle. Refreshments and passenger liability insurance are included. Park fees are excluded and can be settled directly at the lodge.	30 min before sunrise ±14h00 (enquire at reception)	±5-6hrs	990.00
Full-Day Excursion to the Etosha National Park (guided): Explore the National Park and its amazing wildlife in a 9-seater game vehicle. Refreshments, snacks, and passenger liability insurance are included. Park fees are excluded and can be settled directly at the lodge.	30 min before sunrise	±9hrs	1300.00
Excursion to Private Waterhole in Etosha National Park (guided): Come face to face with Etosha's wildlife in the safety and comfort of our hide. Only King Nehale guests have access to this water hole. Snacks and refreshments included. Max 18 pax per departure. Park fees are excluded and can be settled directly at the lodge.	AM (± 30 min before sunrise) PM (± 3hrs before sunset)	±3hrs	1500.00
Cultural Experience: We are currently busy investigating different possibilities to be able to offer the best possible experience for our guests. Please enquire for more information with our Reservations or Sales Department	mornings	±9hrs	1185.00
Transfer to/from Ondangwa in a closed 9-seater vehicle (one way)	On request	102km one way	1980.00 per vehicle
Transfer to/from Mokuti in a closed 9-seater vehicle (one way)	On request	58km one way	1035.00 per vehicle
Transfer to/from Mushara in a closed 9-seater vehicle (one way)	On request	65km one way	1145.00 per vehicle
Transfer to/from Okaukuejo in a closed 9-seater vehicle (one way)	On request	177km one way	3140.00 per vehicle





HAKUSEMBE RIVER LODGE, CAMPING2GO & CAMPING

16 KM WEST OF RUNDU ON THE B 10 (OKAVANGO)

HAKUSEMBE RIVER LODGE All rates N\$ and include VAT & levies Rate validity 01.11.2025 - 31.10.2026	RATE N\$ PP
Double/twin/triple/family room - sharing: bed & breakfast pp/night.	3309.00
Single room: bed & breakfast pp/night	4136.25
Breakfast pp - buffet at Hakusembe River Lodge	284.00
Dinner pp	572.00
Light Lunch - alternatively à la carte at the lodge	228.00
Full 3 Course Lunch pp - alternatively à la carte at the lodge	341.00
Lunch pack pp	226.00
Camping2Go - Self-catering tents with en-suite bathrooms - sharing: bed only, pp/night.	1084.00
Camping2Go - Self-catering tents with en-suite bathrooms - single: bed only, pp/night.	2166.00
Hakusembe River Campsite pp/night	341.00

20 CHALETS: 6 TWINS, 12 TRIPLE ROOMS, 1 FAMILY VILLA & 1 FAMILY HOUSE, 4 CAMPING2GO SAFARI TENTS & 4 CAMPSITES

FAMILY ROOM CONFIGURATION: 1X FAMILY VILLA WITH 1 TWIN, 4 SINGLE ROOMS & 1 BATHROOM, 1X FAMILY HOUSE WITH 2 TWIN ROOMS AND 3 SINGLE ROOMS & 2 BATHROOMS

ACTIVITIES AND TRANSFERS FOR HAKUSEMBE RIVER LODGE

ACTIVITIES ARE SUBJECT TO AVAILABILITY. PRICES MAY VARY. ALL RATES ARE N\$ PER PERSON.

DESCRIPTION	DEPARTURE	DURATION	RATE N\$ PP
Sunset Boat Cruise (guided): Experience the water world of the Okavango on a romantic boat trip as the sun goes down. Refreshments and a light snack are included.	1 ½hrs before sunset	±1 ½hrs	460.00
Morning Boat Cruise (guided) for Bird Lovers: Refreshments and a light snack are included.	Mornings	±1 ½hrs	460.00
Fishing Trips (guided, min/max 2 persons per boat): Basic tackle and bait included. Lost or broken fishing equipment is to be replaced at the guest's expense. The fishing license is not included in the RATE N\$ pp and is subject to the Town Council's requirement (contact lodge manager for arrangement). This activity is seasonal and depends on the water level. All fishing is on a catch-and-release basis.	On request	On request	290.00 per hour
Fishing Excursion for enthusiastic anglers: We will gladly submit a detailed offer for a tailor-made fishing excursion. All fishing is on a catch-and-release basis. This activity is seasonal and depends on the water level.	On request	On request	on request
Transfer from Hakusembe to Rundu Airport – return, min 2 pax	On request	10km one way	350.00





NAMUSHASHA RIVER LODGE, CAMPING2GO & CAMPING

24 KM SOUTH OF KONGOLA ON THE C 49 (ZAMBEZI / CAPRIVI)

NAMUSHASHA RIVER LODGE All rates N\$ and include VAT & levies Rate validity 01.11.2025 - 31.10.2026	RATE N\$ PP
Double/twin/triple/family room - sharing: bed & breakfast pp/night.	3309.00
Single room: bed & breakfast pp/night	4136.25
Breakfast pp - buffet at the lodge	284.00
Dinner pp	572.00
Light Lunch pp - alternatively à la carte at the lodge	228.00
Full 3 Course Lunch pp - alternatively à la carte at the lodge	341.00
Lunch pack pp	226.00
Camping2Go - Self-catering tents with en-suite bathrooms - sharing: bed only, pp/night.	1084.00
Camping2Go - Self-catering tents with en-suite bathrooms - single: bed only, pp/night.	2166.00
Namushasha River Campsite pp/night	341.00

25 BUNGALOWS: 20 TWIN ROOMS, 2 FAMILY ROOMS, 2 INTER-LEADING ROOMS & 1 TRIPLE ROOM, 4 CAMPING2GO SAFARI TENTS & 6 CAMPSITES

FAMILY ROOM CONFIGURATION: 2X FAMILY ROOMS (4 ADULTS OR 2 ADULTS & 2 KIDS), 1X TRIPLE ROOM (2 ADULTS & 1 CHILD OR 3 ADULTS) 1X INTER-LEADING FAMILY ROOM (2 ADULTS & 2 KIDS OR 4 ADULTS)

ACTIVITIES AND TRANSFERS FOR NAMUSHASHA RIVER LODGE

ACTIVITIES ARE SUBJECT TO AVAILABILITY. PRICES MAY VARY. ALL RATES ARE N\$ PER PERSON.

DESCRIPTION	DEPARTURE	DURATION	RATE N\$ PP
Bwabwata National Park Excursions – Morning / Afternoon Drive (guided): Enjoy a game drive into the Bwabwata National Park. Park entrance fees, short boat transfers, snacks, and refreshments are included.	±8h00 ±15h00	±3hrs	1130.00
Afternoon Boat Cruise (guided): Experience an unforgettable boat trip on the Kwando River. Refreshments and light snacks are included.	±15h00	±3hrs	985.00
Sundowner Boat Cruise (guided): Watch the magical sunset while experiencing an unforgettable boat trip on the Kwando River. Refreshments and light snacks are included.	±1 ½ hrs before sunset	±1 ½hrs	610.00
Morning Boat Cruise (guided): for the early birds Refreshments and light snacks are included.	±8h00	±1 ½hrs	610.00
Fishing Trips (guided, min/max 2 people per boat): Join a guided fishing trip and catch species such as catfish, tilapia, nambwe, and tigerfish. Boat and basic tackle & bait are included. A fishing license can be obtained at the lodge but is not included in the RATE N\$ pp. Lost or broken fishing equipment is to be replaced at the guest's expense. Catch and release	On request	On request	385.00 p/h
Fishing Excursion for enthusiastic anglers: We will gladly submit a detailed offer for a tailor-made fishing excursion. All fishing is on a catch-and-release basis. This activity is seasonal and depends on the water level.	On request	On request	on request
Transfer Namushasha to Katima Airport Mpacha – return, min 2 pax	On request	120km one way	1005.00
Transfer Namushasha to Lianshulu – return, min 2 pax	On request	25km one-way	330.00
Package Transfer Airport & 3 Zambezi Gondwana properties– return, min 2 pax - Namushasha River Lodge, Zambezi Mubala Lodge, Chobe River Camp	On request		1170.00

ANY CHANGES IN NATIONAL PARK FEES WILL BE REFLECTED IN OUR RATES ACCORDINGLY.





NAMUSHASHA RIVER VILLA

24 KM SOUTH OF KONGOLA ON THE C 49 (ZAMBEZI / CAPRIVI)

- The Namushasha River Villa is part of the Gondwana Secret Collection, based on the Kwando River.
- The Namushasha River Villa is fondly named Masheli – which is the word for water lily in the local Bantu language.
- There is only one River Villa, which consists of a spacious two-story suite - including an open plan kitchen, dining, and lounge area; an en suite room with a balcony and an outdoor area fully equipped with barbecue facilities
- Guests arrive at Namushasha River Lodge, and from there, the River Villa experience begins.
- Check-in is at 14:00 and Check-out time is 10:00 local time.
- Namushasha River Villa is a two-guest exclusive lodge. Children under 14 years old are not permitted, but children 14 years and older are welcome if the total number of guests is two.
- It is fully inclusive of all meals and drinks, with an exclusive game drive experience, in either the morning or afternoon in the Bwabwata National Park.
- There is an equipped kitchen and a fully stocked bar, as well as barbecue facilities on the deck. Meals are pre-prepared according to guests' preferences. The River Villa is equipped with air conditioning.
- There is no service staff or chef based at the River Villa, during the guests' stay to guarantee complete exclusivity and intimacy, however, guests always have radio contact with their host.
- A private chef can be arranged upon request to prepare and serve dinner. However, as we are not permitted to operate on the river during after dark, mealtimes are scheduled to allow sufficient time for the chef to reach the villa and return to the lodge during daylight hours.
- After the experience, guests are ferried back to the lodge.
- Free Wi-Fi is available, and USB ports for charging equipment are provided.

NAMUSHASHA RIVER VILLA		RATE N\$
All rates N\$ and include VAT & levies Rate validity 01.11.2025 - 31.10.2026		
Per room/night, fully inclusive, max 2 pax		30250.00

ACTIVITIES AND TRANSFERS FOR NAMUSHASHA RIVER VILLA

ALL RATES ARE N\$ PER PERSON. ANY CHANGES IN NATIONAL PARK FEES WILL BE REFLECTED IN OUR RATES ACCORDINGLY.

DESCRIPTION	DEPARTURE	DURATION	RATE N\$ PP
Bwabwata National Park Excursions – Morning / Afternoon Drive (guided): Enjoy a game drive into the Bwabwata National Park. Park entrance fees, short boat transfers, snacks, and refreshments are included.	±8h00 ±15h00	±3hrs	Included
Afternoon Boat Cruise (guided): Experience an unforgettable boat trip on the Kwando River. Refreshments and light snacks are included.	±15h00	±3hrs	Included
Morning/Sundowner Boat Cruise (guided): Refreshments and light snacks are included.	±8h00 AM ±1 ½ hrs before sunset	±1 ½hrs	Included
Fishing Trips (guided, min/max 2 people per boat): A guided fishing trip and catch species such as catfish, tilapia, nambwe, and tigerfish. Boat and basic tackle & bait are included. A fishing license can be obtained at the lodge but is not included in the rate. Lost or broken fishing equipment is to be replaced at the guest's expense. Catch and release	On request	On request	Included
Fishing Excursion for enthusiastic anglers: We will gladly submit a detailed offer for a tailor-made fishing excursion. All fishing is on a catch-and-release basis. Activity is seasonal and depends on the water level.	On request	On request	Included
Transfer Namushasha to Katima Airport Mpacha – return, min 2 pax	On request	120km one way	Included
Transfer Namushasha to Lianshulu – return, min 2 pax	On request	25km one-way	Included
Package Transfer Airport & 3 Zambezi Gondwana properties – return, min 2 pax (Namushasha River Lodge, Zambezi Mubala Lodge, Chobe River Camp)	On request		Included

TRANSFERS ARE SUBJECT TO AVAILABILITY AND NEED TO BE PRE-BOOKED. PRICES MAY VARY.





ZAMBEZI MUBALA LODGE

40 KM EAST OF KATIMA MULILO OFF THE B8 (ZAMBEZI / CAPRIVI)

ZAMBEZI MUBALA LODGE	RATE N\$ PP
All rates N\$ and include VAT & levies Rate validity 01.11.2025 - 31.10.2026	
Double/twin/triple/family room - sharing: bed & breakfast pp/night.	3309.00
Single room: bed & breakfast pp/night	4136.25
Breakfast pp - buffet	284.00
Dinner pp	572.00
Light Lunch pp - alternatively à la carte at the lodge	228.00
Full 3 Course Lunch pp - alternatively à la carte at the lodge	341.00
Lunch pack pp	226.00

21 BUNGALOWS: 4 TWIN ROOMS, 13 DOUBLE ROOMS & 4 FAMILY ROOMS

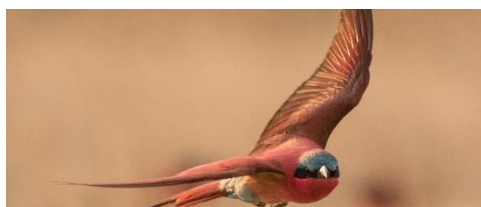
FAMILY ROOM CONFIGURATION: 4X FAMILY ROOMS (2 ADULTS & 2 KIDS OR 4 ADULTS - 2 ROOMS & A BATHROOM IN EACH)

Guests of the Zambezi Mubala Lodge will arrive at the Zambezi Mubala Camp and will be transferred by boat to the location of the Lodge.

ACTIVITIES AND TRANSFERS FOR ZAMBEZI MUBALA LODGE

ACTIVITIES ARE SUBJECT TO AVAILABILITY. PRICES MAY VARY. ALL RATES ARE N\$ PER PERSON.

DESCRIPTION	DEPARTURE	DURATION	RATE N\$ PP
Sundowner Boat Cruise (guided): Experience the water world of the Zambezi River on a romantic boat trip as the sun goes down. Refreshments and light snacks are included.	±1 ½ hrs before sunset	±1 ½hrs	460.00
Morning / Afternoon Boat Cruise (guided): Capture the colours of the Zambezi River birdlife on a relaxing boat cruise. Ideal for birding/photography enthusiasts. Refreshments and light snacks are included.	±8h00 ±15h00	±3hrs	790.00
Nature Walk to the bird colonies (guided): Only to be booked directly at the Lodge; seasonal	On request	±3hrs	305.00
Fishing Trips (guided, min/max 2 persons per boat): Join a guided fishing trip and catch species such as catfish, tilapia, nambwe, and tigerfish. Boat and basic tackle & bait are included. A fishing license can be obtained at the lodge but is not included in the RATE N\$ pp. Lost or broken fishing equipment is to be replaced at the guest's expense. Catch and release	On request	1hr	385.00 per hour
Fishing Excursion for enthusiastic anglers: We will gladly submit a detailed offer for a tailor-made fishing excursion. All fishing is on a catch-and-release basis. This activity is seasonal and depends on the water level.	On request	On request	On request
Transfer Zambezi Mubala Lodge to Katima Airport Mpacha – return, min 2 pax	On request	50km one way	505.00
Package Transfer Airport & 3 Zambezi Gondwana properties – return, min 2 pax Namushasha River Lodge, Zambezi Mubala Lodge, Chobe River Camp	On request		1170.00
Excursions to Vic Falls: Contact us for more information.	On request	On request	On request
Excursions to Chobe National Park: Contact us for more information.	On request	On request	On request





ZAMBEZI MUBALA CAMP & CAMPING

40 KM EAST OF KATIMA MULILO OFF THE B8 (ZAMBEZI / CAPRIVI)

ZAMBEZI MUBALA CAMP All rates N\$ and include VAT & levies Rate validity 01.11.2025 - 31.10.2026	RATE N\$ PP
Self-catering tents with en-suite bathrooms - sharing: bed only, pp/night.	1084.00
Self-catering tents with en-suite bathrooms - single: bed only, pp/night.	2166.00
Zambezi Mubala Campsite pp/night	341.00
Breakfast pp - pre-booked, alternatively à la carte at the camp	284.00
Lunch pack pp	226.00
Dinner pp - pre-booked, alternatively à la carte at the camp	415.00

An à la carte restaurant is available at Zambezi Mubala Camp.

8 SELF-CATERING TENTS & 11 CAMPSITES

FAMILY ROOM CONFIGURATION: 8x 4-BEDDED TENTS (2 ADULTS & 2 KIDS OR 4 ADULTS, SHARED BATHROOM)

ACTIVITIES AND TRANSFERS FOR ZAMBEZI MUBALA CAMP

ACTIVITIES ARE SUBJECT TO AVAILABILITY. PRICES MAY VARY. ALL RATES ARE N\$ PER PERSON.

DESCRIPTION	DEPARTURE	DURATION	RATE N\$ PP
Sundowner Boat Cruise (guided): Experience the water world of the Zambezi River on a romantic boat trip as the sun goes down. Refreshments and light snacks are included.	±1 ½ hrs before sunset	±1 ½hrs	460.00
Morning / Afternoon Boat Cruise (guided): Capture the colours of the Zambezi River birdlife on a relaxing boat cruise. Ideal for birding/photography enthusiasts. Refreshments and light snacks are included.	±8h00 ±15h00	±3hrs	790.00
Nature Walk to the bird colonies (guided): Only to be booked directly at the Lodge; seasonal	On request	±3hrs	305.00
Fishing Trips (guided, min/max 2 persons per boat): Join a guided fishing trip and catch species such as catfish, tilapia, nambwe, and tigerfish. Boat and basic tackle & bait are included. A fishing license can be obtained at the lodge but is not included in the RATE N\$ pp. Lost or broken fishing equipment is to be replaced at the guest's expense. Catch and release	On request	1hr	385.00 per hour
Fishing Excursion for enthusiastic anglers: We will gladly submit a detailed offer for a tailor-made fishing excursion. All fishing is on a catch-and-release basis. This activity is seasonal and depends on the water level.	On request	On request	On request
Transfer Zambezi Mubala Lodge to Katima Airport Mpacha (return), min 2 pax	On request	50km one way	505.00
Package Transfer Airport & 3 Zambezi Gondwana properties – return, min 2 pax Namushasha River Lodge, Zambezi Mubala Camp, Chobe River Camp	On request	On request	1170.00
Excursions to Vic Falls: Contact us for more information.	On request	On request	On request
Excursions to Chobe National Park: Contact us for more information.	On request	On request	On request





CHOBE RIVER CAMP & CAMPING

4KM FROM THE NGOMA BORDER POST BETWEEN BOTSWANA AND NAMIBIA (ZAMBEZI / CAPRIVI)

CHOBE RIVER CAMP	RACK RATE N\$ PP
All rates N\$ and include VAT & levies Rate validity 01.11.2025 - 31.10.2026	
Double/twin/family room - sharing: bed & breakfast pp/night.	2364.00
Single room: bed & breakfast pp/night.	2955.00
Breakfast pp - buffet at the Lodge	341.00
Dinner pp - buffet.	415.00
Light Lunch pp - alternatively à la carte at the lodge.	228.00
Full 3 Course Lunch pp - alternatively à la carte at the lodge.	341.00
Lunch pack pp.	226.00
Chobe River Campsite pp/night.	341.00

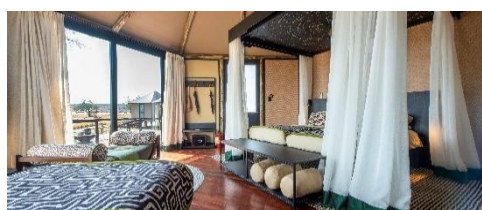
20 TENTED CHALETs: 15 TWIN ROOMS & 5 FAMILY ROOMS & 4 CAMPSITES

FAMILY ROOM CONFIGURATION: 5x FAMILY ROOMS (2 ADULTS & 2 CHILDREN UNDER 13 – 1X TWIN BED, 1X SINGLE BED AND 1X SMALL BED FOR CHILDREN UNDER 6 YEARS)

ACTIVITIES AND TRANSFERS FOR CHOBE RIVER CAMP

ACTIVITIES ARE SUBJECT TO AVAILABILITY. PRICES MAY VARY. ALL RATES ARE N\$ PER PERSON.

DESCRIPTION	DEPARTURE	DURATION	RACK RATE PER PERSON
Morning / Afternoon Boat Cruise (guided, seasonal, on request only): Hop aboard the riverboat for early morning or late afternoon cruises on the Chobe River when the light slants to explore the channels and discover the diverse birdlife. Refreshments and light snacks are included.	±8h00 ±15h00	±3hrs	985.00
Full-Day Boat Cruise (guided, seasonal, min 4 people/max 10 people): Join a full-day boat cruise on the Chobe River and explore the channels and the diverse birdlife. Refreshments and a light lunch are included.	±11h00	±6hrs	1290.00
Sundowner Boat Cruise (guided, seasonal): Watch the sunset while enjoying a relaxing boat cruise on the Chobe River. Refreshments and light snacks are included.	±1 ½ hrs before sunset	±2hrs	530.00
In the dry season between mid-July and December, the Chobe River tends to hold so little water that boat trips are limited, with little or no access to river channels. We make every effort to maintain the activities or offer suitable alternatives. The safety of our guests comes first.			
Walking Trail (guided, seasonal, bookable only directly at the Lodge, subject to availability):	On request	±1-2 hrs	455.00
Canoe Trip (guided, subject to availability, only to be booked directly at the Lodge): Join this guided canoe trip and see the African world from a new perspective. Refreshments and a light snack are included.	On request	±1 ½ hrs	555.00
Birding Drive (guided, subject to availability, only to be booked directly at the Lodge): Discover the diverse bird species on this guided drive, depending on the water level of the Chobe River. Refreshments and a light snack are included.	±07h00 / 8h00 ±3hrs before sunset	±3hrs	510.00
Visit Traditional Mali Village: (unguided) Experience an open-air museum to learn about the traditional way of life of the local tribe Masubia, the largest of the Sub-ethnic groups found in Eastern Caprivi.	Enquire at reception	Enquire at reception	Enquire at reception
Transfer to Katima Airport Mpacha – return, min 2 pax	On request	90km one way	840.00
Package Transfer Airport & 3 Zambezi Gondwana properties– return, min 2 pax Namushasha River Lodge, Zambezi Mubala Lodge, Chobe River Camp	On request	On request	1170.00
Excursions to Vic Falls: Contact us for more information.	On request	On request	at the lodge
Excursions to Chobe National Park: Contact us for more information.	On request	On request	at the lodge





TERMS AND CONDITIONS - DIRECT CLIENTS

BOOKING OPTIONS:

- Please check ALL booking details on the booking confirmation received.
- Please advise the Gondwana booking agent of incorrect booking details or changes immediately.
- Please note that the purchaser must check the final booking summary.
- Payment strictly 72 hours (3 days) after receipt of the booking summary, failing which the booking will be deleted from the system automatically.
- The status of the booking summary is PROVISIONAL and will only be converted to CONFIRMED, once the full payment is reflected in our bank.
- Bookings are subject to availability at the time of booking made.
- Bookings made directly on arrival must be paid in full at the facility (discounts for Card Holder applicable)

CANCELLATION POLICY:

+ 29 days prior to arrival:	10%
22- 28 days prior to arrival:	20%
15- 21 days prior to arrival:	30%
08- 14 days prior to arrival:	50%
04- 07 days prior to arrival:	75%
01- 03 days prior to arrival:	90%



PAYMENT PROCEDURE:

Always use the booking reference number on the proof of payment

Send the proof of payment to: payments@gcnam.com

It is inevitable to have your proof of payment and booking confirmation from Gondwana with you at the time of check-in.

PAYMENT OPTIONS:

Gondwana Collection Namibia (not for The Weinberg, Okapuka Safari Lodge, The Pearls, or Klein Aus Vista)

Credit Card Payment Facility: Use our direct secure site: <https://shop.directpay.online/paymybills/GondwanaOperators>

- (enter your Booking Number as Reference)

EFT Payment

Bank: **Bank Windhoek Limited**
Account Name: Gondwana Collection Namibia (Pty) Ltd.
Account Number: 8014638686
Branch Code 481-972

International Bank Transfer

SWIFT BWLINANX (International Transfers only) Swift Fees apply and will be for the payee's account.

EFT Payment

Bank: **FNB Business**
Account Name: Gondwana Collection Namibia (Pty) Ltd.
Account Number: 622 624 541 78
Branch Code 281 872 (from RSA please use universal branch Code 282 672)

International Bank Transfer

SWIFTFIRNNANX (International Transfers only) Swift Fees apply and will be for the payee's account.

Okapuka Safari Lodge

EFT Payment

Bank: Bank Windhoek Limited
Account Name: Okapuka Hospitality Management (Pty) Ltd
Account Number: 8028160405 (CHK)
Branch Code 481-972

International Bank Transfer

SWIFT BWLINANX (International Transfers only) Swift Fees apply and will be for the payee's account.

Credit Card Payment Facility: Use our direct secure site: <https://shop.directpay.online/paymybills/OkapukaHospitalityManagement>

- (enter your Booking Number as Reference)

The Weinberg, The Weinberg Urban Pod, The Pearls Beach Pods

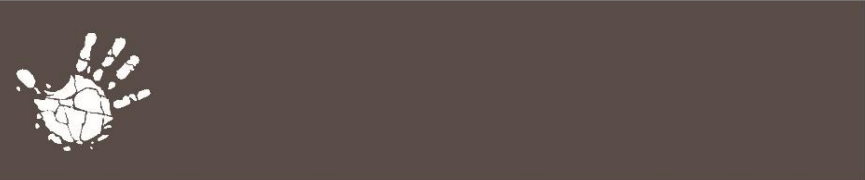
EFT Payment

Bank: Bank Windhoek Limited
Account Name: Gondwana Hospitality Management (Pty) Ltd
Account Number: 8023839673 (CHK)
Branch Code 481-972

International Bank Transfer

SWIFT BWLINANX (International Transfers only) Swift Fees apply and will be for the payee's account.

Credit Card Payment Facility: Use our direct secure site: <https://shop.directpay.online/paymybills/TheWeinberg> - (enter your Booking Number



CHILD POLICY:

Most of our offerings are child-friendly, except for Namib Dune Star Camp, The Desert Whisper, Reverie Kalahari Pod, The Ekipa Etosha Pod, and Namushasha River Villa. Children up to 5 years old are complimentary; children from 6 to 13 years old are counted as occupants and receive a 50% discount on the rack rate for accommodation, pre-booked meals, and activities.

For The Weinberg Urban Pods (Windhoek) and The Pearls Beach Pods (Swakopmund):

Children qualify for a 50% discount on adult rate for the second and third bedrooms.

- Second Bedroom Rate: N\$9,075.00 per room per night
- Third Bedroom Rate: N\$6,050.00 per room per night

For the Terrace Suites:

Children qualify for a 50% discount on the adult rate for the second bedroom.

- Second Bedroom Rate: N\$2,750.00 per room per night

Luna Namib Collection: Children are welcome in designated family units. Please note that **no child-specific discounts apply**, and standard rates will be charged.

Child & Adult Sharing Policy

- 1 adult charged the per person sharing rate with 1 child charged at the per person sharing rate off the rack rate.
- 1 adult charged the per person sharing rate with 2 children also charged at the per person sharing rate off the rack rate.
- Children aged 6–13 years: Charged 50% of the adult sharing rack rate.
- Children aged 0–5 years: Stay free of charge, regardless of whether they share with one or two adults.





FACT SHEETS FOR ALL PROPERTIES

- DETAILED FACT SHEET – OKAPUKA SAFARI LODGE [HERE](#)
- DETAILED FACT SHEET – THE WEINBERG HOTEL [HERE](#)
- DETAILED FACT SHEET – THE URBAN PODS [HERE](#)
- DETAILED FACT SHEET – KALAHARI ANIB LODGE & CAMPING [HERE](#)
- DETAILED FACT SHEET – KALAHARI CAMPING2GO [HERE](#)
- DETAILED FACT SHEET – THE REVERIE KALAHARI POD [HERE](#)
- DETAILED FACT SHEET – KALAHARI FARMHOUSE & CAMPING [HERE](#)
- DETAILED FACT SHEET – CANYON LODGE [HERE](#)
- DETAILED FACT SHEET – CANYON VILLAGE [HERE](#)
- DETAILED FACT SHEET – CANYON ROADHOUSE & CAMPING [HERE](#)
- DETAILED FACT SHEET – NAMIB DESERT LODGE & CAMPING [HERE](#)
- DETAILED FACT SHEET – NAMIB DESERT CAMPING2GO [HERE](#)
- DETAILED FACT SHEET – NAMIB DUNE STAR CAMP [HERE](#)
- DETAILED FACT SHEET – THE DESERT GRACE LODGE [HERE](#)
- DETAILED FACT SHEET – THE DESERT WHISPER [HERE](#)
- DETAILED FACT SHEET – LUNA NAMIB COLLECTION [HERE](#)
- DETAILED FACT SHEET – THE DELIGHT HOTEL [HERE](#)
- DETAILED FACT SHEET – THE PEARLS BEACH PODS [HERE](#)
- DETAILED FACT SHEET – DAMARA MOPANE LODGE [HERE](#)
- DETAILED FACT SHEET – PALMWAG LODGE & CAMPING [HERE](#)
- DETAILED FACT SHEET – PALMWAG CAMPING2GO [HERE](#)
- DETAILED FACT SHEET – PALMWAG LODGE UNDER CANVAS SLEEP-OUT [HERE](#)
- DETAILED FACT SHEET – OMARUNGA CAMP [HERE](#)
- DETAILED FACT SHEET – ETOSHA SAFARI LODGE [HERE](#)
- DETAILED FACT SHEET – EPIKA ETOSHA POD [HERE](#)
- DETAILED FACT SHEET – ETOSHA SAFARI CAMP & CAMPING [HERE](#)
- DETAILED FACT SHEET – ETOSHA SAFARI CAMPING2GO [HERE](#)
- DETAILED FACT SHEET – ETOSHA KING NEHALE [HERE](#)
- DETAILED FACT SHEET – HAKUSEMBER RIVER LODGE & CAMPING [HERE](#)
- DETAILED FACT SHEET – HAKUSEMBE CAMPING2GO [HERE](#)
- DETAILED FACT SHEET – NAMUSHASHA RIVER LODGE & CAMPING [HERE](#)
- DETAILED FACT SHEET – NAMUSHASHA CAMPING2GO [HERE](#)
- DETAILED FACT SHEET – NAMUSHASHA RIVER VILLA [HERE](#)
- DETAILED FACT SHEET – ZAMBEZI MUBALA LODGE [HERE](#)
- DETAILED FACT SHEET – ZAMBEZI MUBALA CAMP & CAMPING [HERE](#)
- DETAILED FACT SHEET – CHOBE RIVER CAMP & CAMPING [HERE](#)

For any enquires on rates please contact:

sales@gondwana-collection.com



GONDWANA
COLLECTION
NAMIBIA

www.gondwana-collection.com