

GALTON HOUSE

WINDHOEK - URBAN RETREAT



ultimate earth
enriching lives



LOCATION

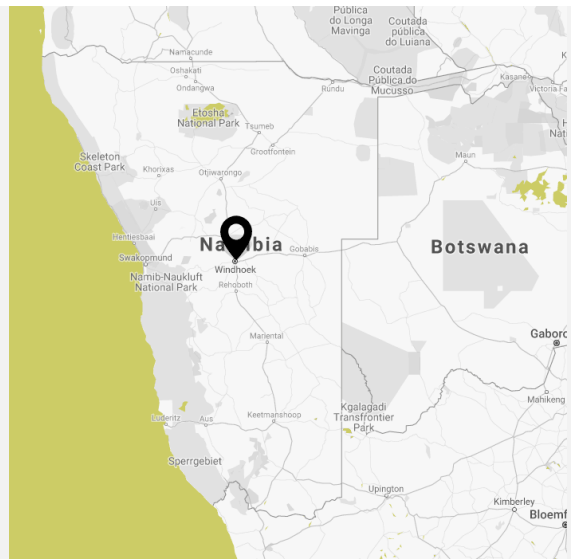
GPS CO-ORDINATES

22°.53 25.99 S 17°.09 14.23 E

AIRSTRIP

Eros Airport

Windhoek International Airport



OVERVIEW

Located in Windhoek and named after the famous explorer Sir Francis Galton, Galton House has a relaxed but efficient style which creates a very welcoming atmosphere. Impressive wildlife photography adorns the walls whilst the rest of the interior is a combination of modern minimalistic and understated chic. A mere ten-

Reservations Emergency Number: +264 81 165 9975 • Tel: +264 61 248137 • reservations@ultimate-earth

minute drive from the centre of town and perched on the edge of Windhoek's northernmost affluent suburb of Eros, guests here are assured of a suitably relaxing stay with friendly and caring service. The communal areas consist of a large lounge, indoor and outdoor dining areas, a swimming pool, an early arrival/late departure day / day facility room (including toilet, shower, changing and re-packing facility) as well as understated garden areas. There is also a delightful 'al fresco' dining area by the pool where freshly prepared and very tasty meals can be served (including lunch and dinner). A number of shops, restaurants and supermarkets are within easy striking distance.

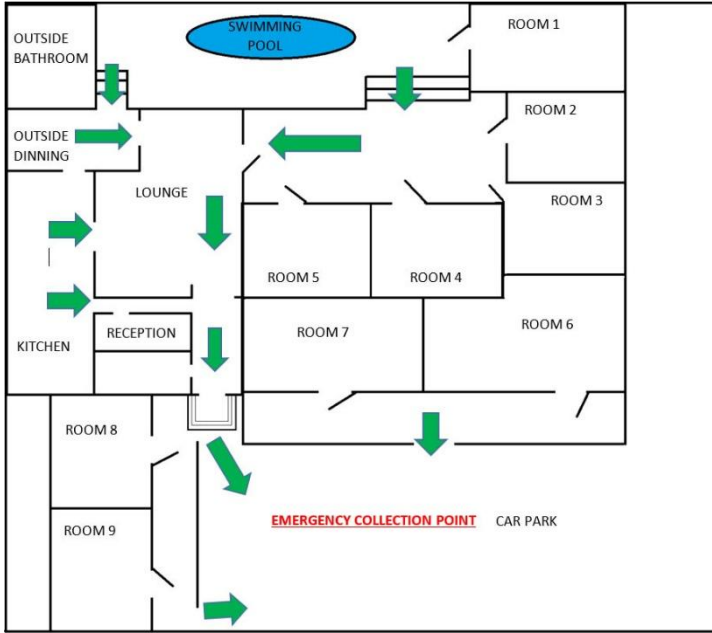
AT A GLANCE

- 9 en suite rooms (Standard rooms consist of 5 double, 2 twin & 1 triple room, plus one Poolside Suite which can be converted into a family room for 2 adults + 2 kids / one double + two twin beds)
- Satellite television
- Coffee/tea stations and electronic safes in rooms
- Air conditioning
- Swimming pool
- Bed and breakfast basis (lunch, dinner and bar service charged additionally)
- Artisan coffee
- Spacious communal inside and outside lounges and dining rooms
- Interactive open-plan kitchen
- Early arrival/late departure day room
- Open year-round
- No minimum night stay
- On demand shuttle service (charged additionally)
- Children very welcome
- 100% solar powered
- WIFI
- Telephone

AREA

Windhoek, Namibia's capital city, is nestled amongst rolling hills, bounded by the Eros Mountains in the east, the Auas Mountains to the south and the Khomas Hochland in the west. It is a meeting place between Africa and Europe, the modern and the old. In the capital's main street, well-preserved German colonial buildings are in sharp contrast with modern architectural styles, while Herero women in their traditional Victorian dresses mingle with executives dressed in the latest fashions. Centrally located within Namibia, Windhoek is an excellent starting point for an adventurous holiday for many visitors to the country and an ideal base from which to explore the rest of the country.

HOUSE LAYOUT



EXPERIENCES



Windhoek 'Redefined' Tour



Windhoek Mountain Biking



Local dining

IMPACT



Pack for Conservation



Sustainable management practices

Reservations Emergency Number: **+264 81 165 9975** • Tel: **+264 61 248137** • reservations@ultimate.earth

GALLERY



Reservations Emergency Number: **+264 81 165 9975** • Tel: **+264 61 248137** • reservations@ultimate.earth