



MACHABA SAFARIS



CONSERVATION & COMMUNITY COMMITMENTS
NOVEMBER 2025

CONSERVATION & COMMUNITY

At Machaba Safaris, we are deeply committed to conserving the natural beauty and rich wild life of Botswana and Zimbabwe. Our dedication to conservation extends beyond the safari experience; it is woven into the very fabric of our operations. From minimizing our environmental footprint to actively up lifting and empowering local communities, conservation is at the heart of everything we do. We proudly partner with local conservation NGOs, anti-poaching teams and engage in wildlife research to protect endangered species and their habitats. Collaborating with local stakeholders and conservation organizations ensures our efforts are both impactful and collaborative.

Our commitment also reaches the communities surrounding our reserves, where we sponsor student training and internships nurture local talent. We invest in local development projects, education programs, and youth development initiatives to build as hared responsibility for conservation. Through our immersive safari experiences, we hope to deepen all of our understanding and appreciation of these unique ecosystems. By blending conservation and community, we strive to create lasting, positive impacts.

Join us in our mission to conserve and appreciate these incredible landscapes for future generations while enjoying a truly unforgettable safari adventure

VISIT WWW.MACHABASAFARIS.COM
FOR FURTHER INFO EMAIL ENQUIRIES@MACHABASAFARIS.COM



MACHABA SAFARIS

3 PILLARS



EDUCATION

At Machaba Safaris, we truly believe that every child deserves a chance at a good education. It's not just about learning; it's about giving kids the tools they need to become the future guardians of our planet. We're focused on making learning spaces better and ensuring education is within reach for everyone – young or old.

On top of that, we offer exciting trainee programs, school attachment opportunities, and job shadowing experiences. These programs are all about hands-on learning and connecting with nature in meaningful ways.

Our hope is to spark a passion for conservation in young hearts and minds. Together, we can build a brighter future where everyone has a voice in protecting our beautiful world.

CONSERVATION

Our conservation efforts are all about building a harmonious relationship between people and wildlife.

We're dedicated to protecting and conserving the incredible animals and wild spaces in our communities and concessions. We believe through teaching co-existence we can help people appreciate the beauty of nature while ensuring that wildlife can thrive. It's all about finding balance—supporting local communities and protecting the natural world that surrounds us.

We also actively support anti-poaching teams in NG32, working hand-in-hand to protect vulnerable species and their habitats. We're involved in research projects within our concessions, helping to deepen our understanding of wildlife and ensure sustainable practices.

Together, we can create a future where both people and wildlife not only coexist but thrive side by side. Let's celebrate our wild spaces and the amazing creatures that call them home!

COMMUNITY EMPOWERMENT

At Machaba Safaris, we're committed to finding practical and sustainable solutions to the skills development and unemployment challenges faced by the communities we serve. We believe that empowering local people is key to creating lasting change.

We work closely with organizations like the Okavango KopanoMokoro Community Trust (OKMCT) and the Chobe Enclave Conservation Trust (CECT). Together, we're focused on developing initiatives that provide real opportunities and support for community members.

By treasuring these partnerships, we aim to create pathways for skill-building and employment that benefit both people and the environment. We believe that when communities thrive, so do the incredible ecosystems around them.



EDUCATION

NURTURING FUTURE GENERATIONS

- GONNYE SETHLARE PRE-SCHOOL
- MAIN CAMP PRIMARY SCHOOL & MABALE PRIMARY SCHOOL
- ROBINS PRIMARY SCHOOL
- SUPPORTING SCHOOL EVENTS & FUNCTIONS
- EMPOWERING FUTURE LEADERS THROUGH TRAINING PROGRAMS
- INTERN ATTACHMENT PROGRAM



GONNYE SETHLARE PRE-SCHOOL

Machaba Safaris is proud to introduce “Gonnye Sethlare,” which translates to “little tree” and embodies our commitment to nurturing growth within the communities we serve. Spearheaded by Wendy Rankin and Letty Hatshe, both integral members of the Machaba Safaris family, Gonnye Sethlare is dedicated to developing preschools in the rural areas where we operate.

In our conversations with village councils, one pressing need stood out: early childhood education. Many children, aged two to five, were missing out on the foundation they need to thrive in primary school. That’s why we built our first preschool in the remote village of Ditshipi, nestled in the Okavango Delta. This little school can welcome 36 learners and stands as the only educational centre in the village.

Since its inception in 2019, the school has successfully graduated many classes, paving the way for a brighter future for these young learners. Machaba Safaris proudly funds the school, ensuring that kids receive nutritious meals and all the materials they need to learn and play.

We’re just getting started. Over the next 15 years, our dream is to create as many preschools as possible, spreading the gift of education to even more children. Gonnye Sethlare isn’t just a project for us; it’s a promise to help shape a brighter future for these kids and their communities.





GONNYE SETLHARE GRADUATION & CHRISTMAS PARTY

In December 2024, Machaba Safaris had the privilege of hosting the first-ever joint Christmas party and graduation at the Gonnye Setlhare Preschool in the village of Ditshipi. This event was a momentous occasion, bringing joy and celebration to the entire community. The Christmas party was a heartwarming event, filled with laughter, music, and dancing.

The children, their families, teachers, and members of the local community came together to celebrate not only the accomplishments of the graduating class but also the spirit of the season. The event brought much-needed joy and happiness to the village, as families enjoyed a day of fun, delicious food, and a sense of togetherness.

The preschool continues to provide essential early education, ensuring that children have a strong foundation for their future schooling. Machaba Safaris remains committed to nurturing growth and creating a brighter future for the children and communities we serve.

MOREMI SPED CHRISTMAS PARTY

Machaba Safaris hosted a Christmas party for the children of Moremi Primary School's Special Needs Department in November 2024. The school, the only one in the Ngamiland area with a Special Needs Department, supports 138 children with various disabilities, including autism, Down syndrome, cerebral palsy, and physical disabilities. The theme of the event, "Celebrating Our Differences #Re A Kgona," was a true reflection of the day, as we celebrated the unique abilities of each child. Approximately 400 people, including children, parents, teachers, and VIPs, attended the event. Each child received a Christmas gift, some of whom had never received a Christmas gift before. The children's performances that ranged from dances to raps brought joy to everyone.

The teachers' encouragement and support were especially touching, and the day was filled with happiness as the children enjoyed jumping castles, water slides, dancing, singing, and snacking. The food for the event was prepared by trainee chefs from BOSWA, who generously volunteered their time to create a delicious meal. This event was made possible thanks to the support of many of our local suppliers. At Machaba Safaris, we are deeply committed to supporting the Moremi Primary School's Special Needs Department. These children are learning invaluable skills such as gardening, carpentry, and sewing that will help them succeed in life. Next year, we hope to assist the school with building more accessible paths and improving the wheelchair ramps to enhance mobility and inclusivity. We also aim to support the school's wish list for a play area, photocopy machines, sewing machines, and more, so they can continue providing essential opportunities for these children to thrive.





MOREMI PRIMARY SCHOOL GRADUATION 2025

We sponsored the Moremi Primary School graduation, celebrating the success of 103 students and their academic achievements. The event welcomed over 1,200 attendees, with 26 students earning 'A' grades and 24 receiving 'B' grades which is a reflection of the school's dedication to the community.

This celebration was a meaningful opportunity to strengthen our relationship with the school and support the bright futures of local learners. We remain committed to uplifting education and empowering the communities in the areas we operate.





MAIN CAMP PRIMARY SCHOOL & MABALE PRIMARY SCHOOL

Machaba Zimbabwe is dedicated to assisting disadvantaged communities adjacent to Hwange National Park, having begun operations in May 2018. Our efforts focus primarily on the Mabale Village and Hwange Main Camp School, both of which are situated in vulnerable wildlife areas prone to human wildlife conflict.

We engage in community development initiatives that aim to empower these communities through skills development and support for local schools. By building relationships with the residents and educators in these areas, we help meet their immediate needs while promoting sustainable practices that benefit both people and wildlife.

MAIN CAMP PRIMARY SCHOOL

One of our focal areas is education, where we actively support, along with the Matter Foundation, the development of Main Camp Primary School, which borders Hwange National Park. In collaboration with school representatives, we have gathered a list of priorities and challenges facing the institution. Our commitment includes addressing these needs to enhance the educational experience for students.

The specific needs include:

- Teacher Support: Providing reasonable allowances for teachers who are not on the government payroll.
- Early Childhood Development (ECD) Facilities: Constructing a standard classroom and a dedicated toilet for ECD students.
- Office Furniture: Supplying necessary furniture for administrative purposes.
- ECD Centre Security: Installing a fence and gate around the ECD center.
- Classroom Essentials: Furnishing classrooms for ECD and Grade 1 students.
- Curriculum Materials: Supplying new curriculum textbooks.
- School Premises Security: Building a brick wall around the school to enhance safety.
- ICT Resources: Providing additional laptops for ICT lessons and establishing a computer lab.
- Food Security: Creating a food storage room and supplying a stove to prepare lunches for students

ROBINS CAMP PRIMARY SCHOOL

Machaba Safaris, in partnership with other companies, helped build Robins Primary School in Hwange National Park. Since its founding, we have been dedicated to supporting the school in various ways. Our ongoing contributions include providing essential supplies such as stationery, paying teacher salaries, and furnishing the classrooms to ensure a comfortable learning environment.

Additionally, we assist with the school's upkeep to ensure a clean and safe environment for the children. We also supply a range of educational materials, including posters, books, and library resources, to support the students' learning. Our goal is to ensure that each child has the tools they need to thrive academically. Through these efforts, we aim to make a positive and lasting difference in the lives of the students and the surrounding community, helping to create a brighter future for the children of Robins Primary School.





CULTURAL EXCHANGE AND COMMUNITY ENGAGEMENT

Our commitment extends beyond infrastructure. By engaging with the communities and schools near our camps, we create opportunities for cultural exchange, allowing our guests to participate in village visits and community projects from Verneys Camp in Zimbabwe to visit Main Camp Primary School & Mabale Primary School, from Gomoti Plains Camp in Botswana to visit Gonnye Sethlare Pre-school and from Ngoma Safari Lodge to visit Mabele Village. This not only enriches the guest experience but also provides a deeper understanding of the local culture and the challenges these communities face.

Through guided village visits, guests interact with local residents and learn about their culture, traditions, and daily challenges. This engagement helps generate income for the community as guests often purchase handmade crafts or local produce, providing a vital source of income for the artists and farmers. Additionally, a portion of the fees from these visits can be reinvested into community projects, such as education and healthcare initiatives, further supporting local development.

See the following slide to see what guests can expect on one of these community visits.



COMMUNITY VISITS AT VERNEYS CAMP

WHAT TO EXPECT...

Visiting the local community is always a rewarding experience. Each area in Zimbabwe has its own unique cultural footprint, and the local people are always eager to share the rich history and traditions of their area. A safari is not only about wildlife; it's also an opportunity to discover new tribes, places, languages and customs, making the community visit an enriching part of the journey.

VERNEYS CAMP:

Situated in the remote Southeastern part of the Hwange National Park, approximately 40km from the school (Hwange Main Camp school) and 60km from the village (Mabale)

A TYPICAL DAY SPENT IN THE LOCAL COMMUNITY

COMBINED GAME DRIVE & COMMUNITY VISIT

Joining the community visit won't cut into your game drive time. We've got everything planned so you can enjoy both without missing out. After an early morning breakfast (continental and/or full English), guests set off on a morning game drive, spotting the incredible wildlife along the way and taking in the scenic views of Hwange National Park.

There is an option to do both the school visit and village tour, or to just do one of the two, depending on the guest's interest.

SCHOOL VISIT

The school is located in the National Park Headquarters. The students are always delighted to have guests visit them, and eagerly put on a great show with music and dance.

Guests get to enjoy teas and coffees served with tasty homemade cookies from camp.

VILLAGE TOURS

After the school tour, guests can choose to visit the local village, which includes a trip to a homestead—either the Chief's or another family's. Welcoming visitors is an important part of the Zimbabwean culture.

PICNIC LUNCH

During a community visit, our guests get to enjoy a delicious picnic lunch. The guide always brings a cooler box stocked with drinks and water. On the vehicle, there are also snacks to enjoy while exploring the Hwange bush.

BACK TO CAMP

After a day well-spent in the community, guests get to enjoy a game drive back to camp, typically via a different route than in the morning's, allowing them to experience a new area of the concession. Guests can choose to relax with sunset drinks and snacks either from the comfort of camp or from a nearby waterhole.





NGOMA LODGE COMMUNITY VILLAGE TOUR

Experience a village tour while staying at Ngoma Lodge, located in the Chobe Forest area near Chobe National Park. The lodge is a short drive from the renowned Mabele village, about 7km away (approximately 10 to 15 minutes by car). The village tour typically takes place after the morning game drive during guests' downtime, ensuring they won't miss any game-viewing activities. However, guests can opt to take the tour in the afternoon instead of the game drive.

A TYPICAL DAY SPENT IN THE LOCAL COMMUNITY

FARM VISITS

Ngoma Lodge supports a local farm run by Dan Jery through knowledge sharing on herbs and vegetables. The farm provides fresh produce, such as basil, mint, coriander, and eggs, which are served at the lodge. Guests are invited to visit this farm en route to Mabele village to see firsthand how the lodge's value chain promotes employment, community engagement, and sustainability.

LWAVO CULTURAL CENTRE

At the Lwavo Cultural Centre, guests have the opportunity to observe traditional basket weaving by local women, as well as explore locally made products. Guests also enjoy performances featuring traditional dancing, drumming, and can immerse themselves in the authentic culture and way of life in the area.

SCHOOL VISITS

Guests can visit Mabele Primary School to learn about Botswana's educational system. Interaction with students and teachers is encouraged, fostering cultural exchange. Visits are pre-arranged with the school principal to avoid disrupting classes. Guests who wish to donate books or other supplies are welcome to do so, with all contributions given directly to the school.

CLINIC VISITS

There is also a village clinic where guests can learn more about the healthcare system in Botswana. Visitors are welcome to interact with the village nurse to gain insight into local medical practices.





EMPOWERING FUTURE LEADERS THROUGH TRAINING PROGRAMS

At Machaba Safaris, we believe in the power of education and skill development as a means to uplift communities and promote sustainable tourism. We proudly sponsor students to attend a 12-month training program in South Africa. Our first participant was Dineo Shareshando. This initiative reflects our commitment to providing valuable opportunities for local residents to gain essential skills in the tourism industry. Recognizing the importance of continuous learning, we are expanding our educational programs to include comprehensive training for all staff members. Our focus is creating a culture of growth and development within our organisation.

INTERN ATTACHMENT PROGRAM

In our efforts to support the next generation of tourism professionals, Machaba Safaris has an Intern Attachment Program. This initiative supports students from institutions such as BOSWA for chefs and the University of Botswana, allowing students with no previous work experience to gain hands-on training in a real-world tourism environment.

We welcome two interns per property for a six-month rotation, providing them with invaluable insights into the operations of a safari company. One of the greatest challenges facing graduates today is securing work experience after their studies, especially in the tourism sector, which makes finding work for these students difficult. Our aim is to encourage and empower graduates to pursue careers in tourism by offering practical experience and mentorship. By investing in their development, we not only enhance our own team but also contribute to the growth of a skilled workforce within the industry.

At Machaba Safaris, we understand that the future of tourism depends on the passionate individuals who drive it. Through our training programs and partnerships, we are committed to nurturing talent and a vibrant community that thrives alongside our beautiful natural landscapes.





COMMUNITY EMPOWERMENT

EMPOWERING LIVES, STRENGTHENING FUTURES

MUCHENJE COMMUNITY DEVELOPMENT PROJECT
BASKETS SALES SUPPORTING OUR MACHABA SAFARIS

STAFF & THEIR FAMILIES

HUMANITARIAN CONTRIBUTION

HOUSING

WATER SUPPLY

COMPANY CULTURE



HIPPO ROLLERS DONATED TO KAVIMBA VILLAGE

Machaba Safaris donated 15 Hippo Rollers to the community of Kavimba Village in the Chobe region, helping make daily water collection easier. Each roller can carry up to 90 litres of water, allowing residents to transport significantly more water with far less physical effort.

In rural communities, collecting water often means walking long distances and carrying heavy containers by hand or on the head. The Hippo Roller changes that, as water is rolled along the ground, reducing physical strain and saving valuable time for families. What once took hours can now be done in a shorter amount of time, creating opportunities for school, work, family, and rest.

This initiative reflects our belief that true sustainability also includes uplifting the communities who live alongside the wilderness we help to protect. Supporting access to something as essential as water is one of the most meaningful ways we can stand with our neighbours.





MUCHENJE COMMUNITY DEVELOPMENT PROJECT: MR. DAN JEREMIAH'S FARM

We believe in the importance of empowering local communities through sustainable initiatives. One of our key projects is the Muchenje Community Development Project, which directly supports Mr. Dan Jeremiah and his farm in Mabele Village. This collaboration has blossomed from ongoing discussions between Ngoma Safari Lodge and Mr. Jeremiah.

The farm has evolved into a sustainable source of fresh produce, growing a variety of crops such as paw paws, eggs, herbs, spinach, and cabbage. This not only meets the demand for quality ingredients for our international guests but also supports local agriculture and food security. We receive fresh supplies from Mr. Jeremiah's farm weekly, ensuring that our culinary offerings highlight the richness of local produce.

In addition to supporting sustainable farming practices, the project provides employment opportunities for the local community. Currently, the farm employs seven staff members from Muchenje Village, contributing to the economic growth and stability of the area.

By investing in local agriculture and fostering meaningful partnerships, Machaba Safaris aims to create a lasting impact that benefits both the community and our guests. Together, we are nurturing a brighter, more sustainable future for Mabele Village and its residents.





LOCAL EMPLOYMENT

We proudly employ over 80% of our staff from surrounding local communities. This commitment not only creates stable jobs but also empowers families. With reliable income, they can invest in education, healthcare, and other essential services, creating a brighter future for the entire community.

Our staff's deep-rooted knowledge of the land and wildlife is invaluable as it enhances the guest experience, allowing visitors to connect with the rich cultural heritage of the region.

Involving community members in tourism creates a sense of ownership and pride, encouraging them to become stewards of their environment.

This connection inspires them to have a greater appreciation for wildlife conservation and sustainable practices, ensuring that both the natural ecosystem and local cultures are preserved for future generations.





BASKETS SALES SUPPORTING OUR MACHABA SAFARIS STAFF & THEIR FAMILIES

- Integral to Botswana's agricultural culture, baskets have been traditionally made and used for thousands of years and are still very much in everyday use.
- The sales of baskets create additional employment opportunities within the families of our staff and empowers local women.



MAGGIE
House Keeping



OD
House Keeping



MATSHELO
House Keeping



ORINY
Chef





HUMANITARIAN CONTRIBUTION

One of our most heart warming contributions at Machaba Safaris is our support for Moradi Phelo. Born with no bones in her lower legs, Moradi has faced significant challenges, including a lack of proper medical care and mobility aids. In response, we provided her with two wheelchairs, one for her home and another for her school, ensuring she has the means to move independently. Additionally, we continue to contribute P500 per month supporting Moradi throughout her schooling career. She has now gone on to University, where we continue to provide our support. Our commitment to Moradi doesn't end here; we aspire to support her journey towards receiving prosthetic legs, giving her hope for a more mobile future.

HOUSING INITIATIVES

In our ongoing efforts to uplift the community, Machaba Safaris has constructed two houses for destitute families identified by local councils in the areas where we operate. One project we did includes a two-bedroom house built in Maun, equipped with essential amenities such as:

- A kitchen
- A bathroom with toilet and shower
- A lounge
- Two bedrooms
- A geyser
- Power and water connections

We are committed to expanding our housing initiatives, with plans to develop more homes for families in need, helping to create a safe and nurturing environment for all.

WATER SUPPLY

Access to clean drinking water is a fundamental human right. We supply fresh drinking water to the villagers of Shashe ward, located just outside of Maun, who face a constant shortage. To support the community, we have established a dedicated tap that provides a reliable supply of water, especially during times when the ward runs out. We recognize that the villagers rely heavily on water, and we are committed to continuing our efforts to ensure they have access to fresh drinking water.

Through these humanitarian contributions and initiatives, Machaba Safaris strives to make a meaningful difference in the lives of individuals and families.





ADDRESSING FOOD INSECURITY

Research indicates that a significant percentage of the population in Zimbabwe, particularly in rural areas, lives below the food poverty line, meaning their monthly household expenditures cannot meet even the minimum food requirements. In response, Machaba Safaris is dedicated to improving food security in the communities surrounding Hwange National Park.

Our initiatives include:

- Supporting School Feeding Programs: We provide donations to ensure that children receive nutritious meals during school hours.
- Assisting Food Nutrition Projects: Our efforts focus on enhancing community awareness and practices related to nutrition.
- Providing Seeds for Nutritional Gardens: We supply seeds to the Mabalevillage to promote sustainable food sources through local gardening initiatives.
- Machaba Safaris also distributes over 240 food parcels in North-West Botswana every 3 months to eleven villages within the conservation areas we operate in. The parcels are specifically for the unemployed and destitute identified by the village development councils.





HEALTH AWARENESS

We recognize the importance of addressing health issues that impact our communities. We strive to raise awareness about critical health concerns, such as HIV/AIDS, tuberculosis, and cholera. By ensuring that communities are informed about these issues, we aim to improve overall health and well-being.

To further support health initiatives, we assist in providing accessible healthcare and are committed to contributing to the infrastructure development of the health sector.

Our future plans include:

- Donating First Aid Kits: We aim to supply essential medical supplies to local clinics and community health workers.
- Providing Sanitary Pads: Our goal is to ensure that women and girls have access to sanitary products, promoting health and dignity.





COMPANY CULTURE

At Machaba Safaris, our company culture is rooted in a deep respect for nature, a commitment to community, and a passion for providing exceptional experiences. We believe that our success is built on the foundation of a collaborative and an inclusive work environment where every team member feels valued and empowered.

Our team is diverse, bringing together individuals from various backgrounds and cultures, each contributing unique perspectives and skills. We encourage open communication and the sharing of ideas, cultivating a sense of belonging and teamwork. Regular training and development opportunities ensure that our staff can grow personally and professionally, enhancing their skills while advancing our mission.

We take pride in our responsibility to the environment and the communities we serve. This commitment is reflected in our sustainable practices, conservation projects, and community engagement initiatives, which not only benefit the local ecosystem but also enrich the lives of those around us.

Together, we strive to create memorable experiences for our guests, grounded in authentic connections to the land and its people. At Machaba Safaris, we are not just a team; we are a family united by our love for nature and our dedication to making a positive impact.





CONSERVATION

PROTECTING WILDLIFE FOR A SUSTAINABLE WORLD

NG32 ANTI-POACHING

SUPPORTING RESEARCH AND CONSERVATION STAFF

COLLABORATIVE EFFORTS FOR WILDLIFE AND WATER

THE RESURRECTION OF ROBINS CAMP

BALANCING GUEST COMFORT WITH ENVIRONMENTAL RESPONSIBILITY

RECYCLING AND WASTE PROJECTS



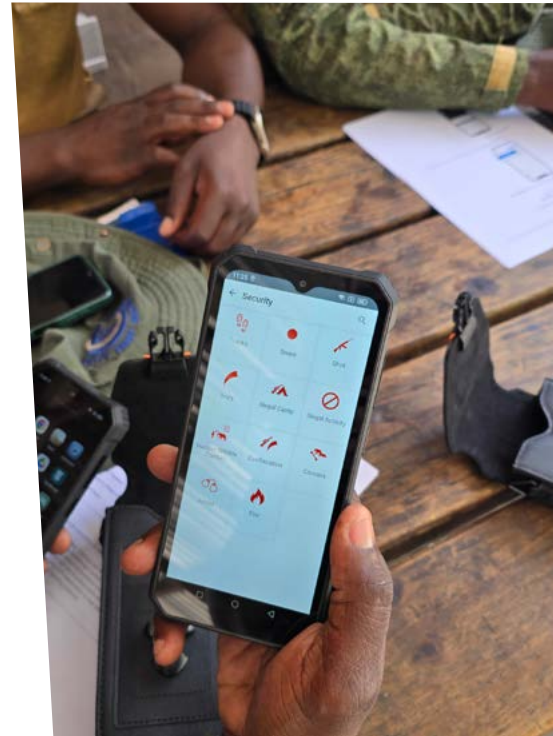
NG32 PATROL TEAMS

As part of our conservation initiatives, we employ gate guards and a dedicated patrol team to support the NG32 anti-poaching efforts. These teams play a vital role in monitoring and protecting the area from illegal activities, protecting wildlife and the broader ecosystem.

We take full responsibility for the wages, rations, fuel, and ongoing maintenance required to keep these teams active in the field.

In 2025, we expanded this system further by integrating EarthRanger into our daily patrol operations. This technology has replaced traditional pen-and-paper reporting with real-time digital updates, which has dramatically improved communication between patrol teams and our central operations. EarthRanger enables us to identify poaching hotspots, map emerging threats, and guide teams toward priority areas with far greater accuracy. Its data visualisation tools allow us to analyse on-the-ground patterns and respond more effectively to illegal activity across the zone.

From January to November 2025, EarthRanger recorded 125 incidents of illegal activity within NG32. These insights continue to shape how and where we deploy our resources. Through this combination of committed personnel, essential equipment, and modern technology, Machaba Safaris remains deeply invested in protecting this critical wildlife landscape.





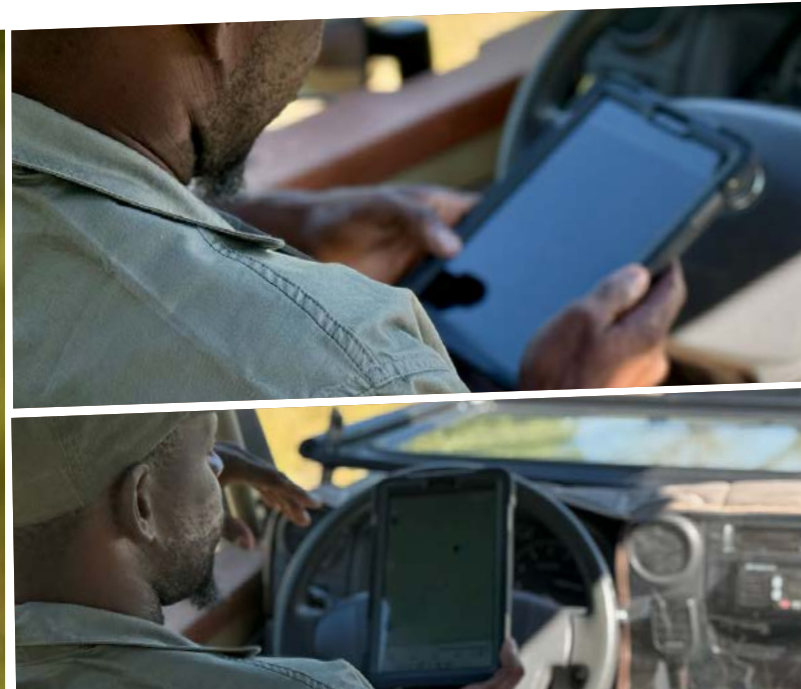
NG32 LION MONITORING PROGRAM

Machaba Safaris has begun Phase 1 of a long-term lion monitoring and coexistence project in NG32 in collaboration with CONNECT Trust. Using EarthRanger, guides now record every lion sighting digitally. This marks the first step in a collaborative initiative with Connect that aims to better understand lion movements, protect key prides, and reduce human-lion conflict in one of the Delta's most sensitive zones.

The data collected, combined with photos shared by our guests at Kiri and Gomoti using the QR code in the poster, will contribute toward us building individual ID kits for lions and prides. As these profiles develop, we will be able to identify which lions move toward nearby villages and how often they approach community areas. Understanding these patterns is essential for identifying the individuals most likely to come into contact with livestock and people. Phase 1 focuses on gathering the baseline information needed to move into the next stage of the project. The next phase will involve safely collaring key lions that frequent community areas, using GPS-enabled collars to create an early-warning system that alerts communities when lions are approaching. This system will help prevent conflict before it occurs.

NG32 is a known hotspot for human and lion conflict because it sits at the edge of the Okavango Delta close to Maun and several villages. Lions are vital for tourism and ecosystem balance, but they can cause significant livestock losses, which often lead to retaliatory killings. At the same time, poaching linked to the illegal trade in lion parts continues to threaten populations. By strengthening data collection and building a clearer picture of lion movements, Phase 1 lays the foundation for long-term coexistence strategies.

This project represents a united effort to protect lions while supporting local livelihoods. As the data set grows, it will guide the development of response teams, community training, wildlife-friendly farming practices, and sustainable management models such as Herding 4 Health. Phase 1 is only the beginning, but it is a vital step toward a future where people and lions can share the landscape more safely and sustainably.





INGWE CAMERA TRAP SURVEY

The Ingwe Camera Trap Project at Ingwe Pan Camp in Mana Pools National Park is an initiative aimed at enhancing our understanding of local wildlife, enriching guest experiences, and supporting conservation.

Camera traps have been placed at key locations, including waterholes and active aardvark burrows. A key focus is the monitoring of aardvarks, one of Africa's most elusive and ecologically important nocturnal species. By studying their burrow use and behaviour, we hope to gather rare data that contributes to understanding habitat health and broader ecosystem dynamics.

The project will also:

- Monitor aardvark burrows, offering rare insights into the lives of these elusive nocturnal animals.
- Track general wildlife movement patterns to identify habitat use and seasonal shifts in behaviour.
- Document rare and threatened species to support species-specific conservation strategies.

All data will be regularly retrieved and analysed, with the insights shared with local ecologists and conservation partners, which can contribute to regional research and conservation efforts. Through this project, we strengthen our role in conservation science while deepening the connection between our guests and the wild.

SUPPORTING LONG-TERM WILDLIFE MONITORING

Machaba Safaris actively participates in the Annual Game Count led by Wildlife and Environment Zimbabwe (WEZ), one of the longest-running wildlife censuses in Southern Africa.

Held in iconic parks like Hwange and Mana Pools, this 24-hour census involves volunteers stationed at waterholes, carefully recording every animal that comes to drink. The data collected provides crucial insights into wildlife populations, movements, and long-term trends, informing conservation strategies and park management decisions.

By contributing our time and resources to this initiative, we proudly support evidence-based conservation and help protect Zimbabwe's remarkable biodiversity for future generations.



MACHABA CONSERVATION CLUB

This project is run in partnership with Lessons in Conservation (LiC) and focuses on delivering fun, interactive, and meaningful environmental education to primary school students in the Ngamiland region. The program currently operates at Moremi Primary School, with the goal of expanding to three additional schools within the next year.

Machaba Safaris has hired a full-time teacher dedicated to running this program, which offers daily after-school lessons for Standards 6. Much of the material reinforces concepts already included in the national syllabus, but the LiC program takes these ideas further, giving students a deeper understanding of conservation and why it matters in their own lives and communities.

The six-lesson curriculum includes:

1. Introduction to Conservation – food chains, food webs, and the value of teamwork
2. The Smaller Things – biodiversity, an introduction to plants and insects
3. Birds, Snakes and Spiders – basic bird identification and the importance of reptiles and arachnids
4. The Big Five – their ecological and tourism significance
5. Area Specific – rivers, pollution, and why keeping waterways clean is vital
6. Employment in Conservation – exposure to careers in the conservation and tourism sectors

Each cycle of lessons ends with an excursion to Kiri Camp for a game drive, giving students the chance to experience wildlife firsthand and see how what they've learned applies in the real world. These outings also introduce them to professionals working in tourism and conservation, helping them envision future career paths.

The program is about building conservation awareness, encouraging behaviour change, and engaging young people in a meaningful way.





IN JUST 6 MONTHS, THIS IS THE IMPACT WE HAVE MADE:

MACHABA CONSERVATION CLUB

OUR FUTURE CONSERVATION CHAMPIONS

By August, **100 %** of learners agreed:
The Earth needs our Help

WE HAVE TAUGHT 131 CHILDREN

between 2 June and 22 November

of which, **82 children have been on game drive only 71% of all**
students have seen wild animals before

- Every child now has conservation knowledge
- Career interest
- Better empathy for wildlife



CAREER INTEREST GROWTH

Want to work in conservation & ecotourism

Before **20%** → After **49%**



MORE AND MORE STUDENTS ARE READY TO JUMP ON BOARD A CAREER IN CONSERVATION!

OVERALL KNOWLEDGE ATTITUDE GROWTH

Prior Conservation Knowledge



Before **65%**



After **99%**

Correct definition of "conservation"



Before **7%**



After **87%**

Correct definition of "ecosystem"



Before **75%**



After **92%**

ANIMAL ATTITUDE SHIFTS

THINK IT'S BAD TO KILL SNAKES

Before **43%** → After **84%**



Don't hurt me!

THINK IT'S BAD TO KILL INSECTS

Before **86%** → After **96%**



Even little creatures matter!



REHERD CHOBE PROJECT

Machaba Safaris provides support to the REHerd Chobe Project, in partnership with WildCAT.

The REHerd Chobe project is run by WildCAT (Wildlife and Communities Action Trust: a partner of WildCRU) and implemented in partnership with Herding 4 Hope. The project is a community-led initiative in northern Botswana's Chobe Enclave that uses traditional livestock practices by training and employing local herders to address the human-wildlife conflict, using communal grazing and mobile predator-safe bomas. The project will also address rangeland degradation improve animal health services and establish sustainable market access. The project aims to restore 100,000 hectares of rangeland, improve livelihoods for 5,000 residents across five villages, reduce conflict with wildlife, and create long-term opportunities through carbon credits and eco-friendly livestock markets.





GOMOTI HABITAT REHABILITATION

Gomoti was once shaded by iconic knobthorn trees, creating a cool, natural oasis around camp and along the channel. Over time, repeated drought cycles have drawn elephants deeper into the area in search of moisture and nutrients. In their struggle to survive, they stripped bark from many of the knobthorns, and most of these iconic trees eventually died from ringbarking, leaving only a handful still standing.

To protect what is left and begin restoring the habitat, we've launched the Gomoti Habitat Rehabilitation Project. We have wrapped existing mature knobthorn trees in protective wire netting to shield them from elephant damage. This method is scientifically proven to significantly increase survival in elephant-impacted landscapes.

The area around camp is now protected with low-impact electric fencing, giving young plants a chance to grow without elephant pressure. Our team is planting a mix of indigenous species, including knobthorns, to rebuild biodiversity and slowly return the shade and structure that once defined this part of camp.

Full regrowth will take time, often decades, but every planting season moves us closer. Our goal for 2026 is to plant around 300 trees, laying the foundation for long-term ecological recovery and a healthier, more resilient habitat for the future.





SNARE REMOVAL AND ANIMAL RESCUE

One of the most heart-wrenching challenges we face in the Okavango Delta is the issue of snaring. These cruel traps, often set by poachers, not only target specific animals for bush meat but also ensnare countless non-target species, leading to unnecessary suffering and injury. In collaboration with Connect Trust, the Department of Wildlife and National Parks (DWNP), and local veterinary services, we actively work to address this issue in the Khwai area surrounding Machaba Camp. This joint effort focuses on locating and safely removing snares to protect both iconic wildlife and the unintended victims of these traps. The problem of snaring extends beyond the Okavango Delta; it is a widespread concern throughout Africa, driven by factors such as poverty and the demand for bush meat. By supporting initiatives like those of Connect Trust and partnering with DWNP, we aim to raise awareness and promote sustainable wildlife management practices.





BAT HOUSES AT ROBINS CAMP

At Robins Camp, Machaba Safaris has taken simple but meaningful action to support biodiversity by installing bat houses. The collapse of a key roosting site left the local bat population without shelter.

Bats play a vital role in the ecosystem, from pollinating plants to keeping insect populations in check. When their roost was lost, many began seeking refuge in guest rooms, creating conflict that put both bats and people at risk.

By providing safe roosting sites specially designed with bats in mind, we're helping these important creatures thrive in the wild where they belong and we can help to ensure the continued presence of bats in the area which will support local biodiversity of Robins Camp and Hwange National Park as a whole.

We've also added educational signage near the bat houses and created opportunities for guests to chat with our guides, who are always happy to share more about why bats matter and how we can all help protect them.

This project is a small but powerful example of how thoughtful, science-backed solutions can make a real difference—for wildlife, for conservation, and for the experience of being in nature..





THE RESURRECTION OF ROBINS CAMP

The revival of Robins Camp in Hwange National Park stands as a testament to the power of dedicated conservation efforts and sustainable tourism. Once a thriving lodge, Robins had fallen into disrepair, but a collaborative initiative brought it back to life, creating significant benefits for wildlife conservation and the local ecosystem.

By improving facilities and increasing visitor access, the camp has become a hub for ecotourism, drawing nature enthusiasts who contribute to the local economy and raise awareness about the importance of protecting Hwange's unique biodiversity. The camp's location near vital water sources has made it an ideal base for researchers and conservationists working to understand and protect the park's diverse species.

Bringing life and people back into the camp has also led to increased traffic in the area, which has a notable impact on reducing poaching. The heightened presence of visitors and staff has discouraged illegal activities, allowing for more animal movement and encouraging wildlife to return to the area. This resurgence in wildlife not only enriches the ecosystem but also enhances the experience for visitors, creating a positive feedback loop for conservation.

Local residents are engaged in various roles, from guiding to hospitality, providing them with an incentive to protect their environment while benefiting economically from tourism.

Through the successful resurrection of Robins, Machaba Safaris and its partners have demonstrated that well-planned conservation initiatives can create a positive ripple effect, supporting not just wildlife, but also the communities that share their habitat. As we continue to support such efforts, we remain committed to ensuring that Hwange National Park thrives for generations to come.





COLLABORATIVE EFFORTS FOR WILDLIFE AND WATER

Machaba Zimbabwe aims to contribute to the broader agenda of conservation and sustainable tourism development. By collaborating with various stakeholders in and around Hwange National Park, we seek to create lasting change that benefits both the environment and local communities.

Hwange, known for its vast wild life and stunning landscapes, is facing one of its toughest droughts in years. It's a stark reminder of a fundamental truth : water is life.

The current crisis has intensified the debate surrounding artificial waterholes in the park. We're dedicated to finding a balance between supporting wildlife and helping to support the Park. Our approach involves carefully planning where to place waterholes and managing our concession to benefit both the environment and the park, and to ensure that every drop of water counts for both nature and the future of the park.

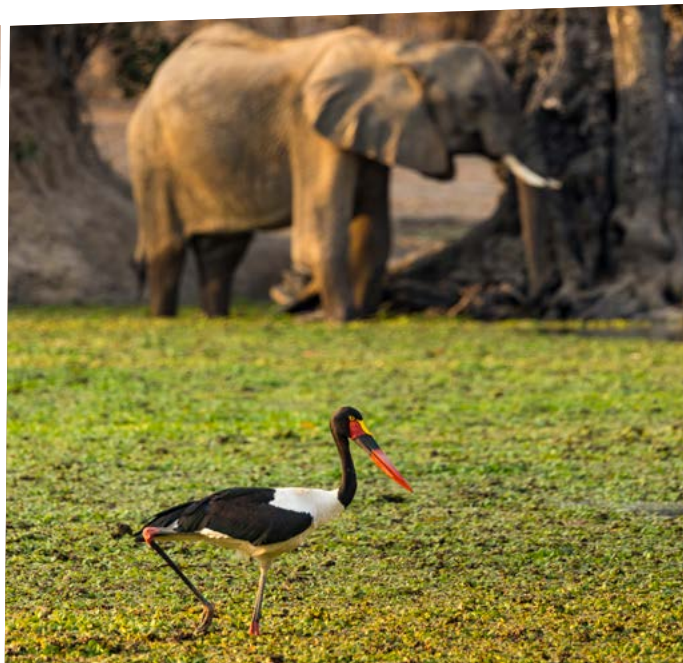
As a testament to the efforts by Zim Parks, they've done a wonderful job in ensuring that Hwange has sufficient water to keep our animals alive and well. The Verneys area paints a drier picture. Five years ago, Verneys was a dry and desolate area, missing the wildlife that characterizes the rest of the park. The scarcity of water meant that animals avoided the region.

But a determined effort from Machaba Safaris and Zim Parks to rejuvenate the area began with the establishment of the Verneys camp, with the repurposing of old boreholes and the construction of new one stobring water once again into the area. This marked the beginning of a remarkable turn around. Slowly but surely, the addition of Verneys Pan began to breathe life back into the area.

It has now become a vital stop on the seasonal migration routes of elephants. These iconic animals' journey from Botswana during the wet season and return to Hwange in the dry season, gracing Verneys with their presence.

Today, Verneys Camp is a thriving oasis. The pan now attracts diverse wildlife, including roan antelope, zebra, oryx, hyena, lion, impala, kudu, warthogs, and even wild dogs. The transformation of Verneys from a barren area of land to a flourishing wildlife haven just shows the power of targeted conservation efforts and the resilience of nature.

Looking ahead, we have ambitious plans to assist on our concession. We're exploring ways to improve the waterhole network and our conservation infrastructure at Machaba. This includes introducing technologies for monitoring water levels and expanding our research to better understand the needs of the park's diverse wildlife. Our commitment to the park is long-term, and these future projects are key to sustaining its health and vibrancy.





SUPPORTING NATIONAL PARK INFRASTRUCTURE

Machaba Safaris contributes to the maintenance of vital infrastructure within Zimbabwe's National Parks. At Robins Camp, we work alongside other operators to grade the Rural District Council Road, ensuring safer and more accessible routes for park staff, conservation teams, and visitors alike.

Well-maintained roads are essential for effective park management and wildlife protection, particularly in remote areas.

WATER FOR WILDLIFE

Machaba Safaris is proud to support the incredible work of the Bhejane Trust, which supplies over 1 million litres of water per day to wildlife in Hwange National Park through a network of 48 game water points.

As part of our contribution, we donated a battery backup system to the Deteema Dam borehole, ensuring a reliable water supply even during power disruptions. Access to water is a lifeline for Hwange's wildlife, especially during the dry season, and this support plays a vital role in sustaining healthy ecosystems.

Water is conservation in action, and we're proud to play our part.



Source: Bhejane Trust



AERIAL SUPPORT FOR CONSERVATION

We support Flying for Wildlife, a vital initiative that provides aerial surveillance and logistics to conservation teams across Zimbabwe. We assist by accommodating pilots when needed and providing flights free of charge to aid critical conservation efforts.

Southern Africa's elephant populations have been severely affected by poaching, and Zimbabwe now holds the second-largest elephant population in the world, equal to the combined numbers of Kenya, Tanzania, and South Africa, according to the Great Elephant Census funded by the late Paul Allen. Yet, with limited government resources due to a long-standing socio-economic crisis, much of the responsibility for protecting this global heritage falls to civil society.

Our flights provide time-critical conservation intelligence, enabling teams to cover vast and remote wilderness areas that would take weeks to monitor on foot. From anti-poaching patrols and wildlife monitoring to supporting research, the aerial perspective greatly improves the speed, efficiency, and effectiveness of conservation work on the ground.

Through this support, we are helping protect Zimbabwe's wildlife, ensuring that even its most remote corners remain protected.





RECYCLING WITH ELE COLLECTION

In partnership with EleCollection, we are proud to contribute to a powerful recycling initiative aimed at reducing plastic pollution in our natural environments around Hwange National Park.

Through this collaboration, we separate and drop off plastic waste from our camps, which is then transformed into Plasrok, a sustainable building material that turns harmful waste into practical solutions. This initiative diverts plastic from landfills and landscapes and helps build stronger communities.

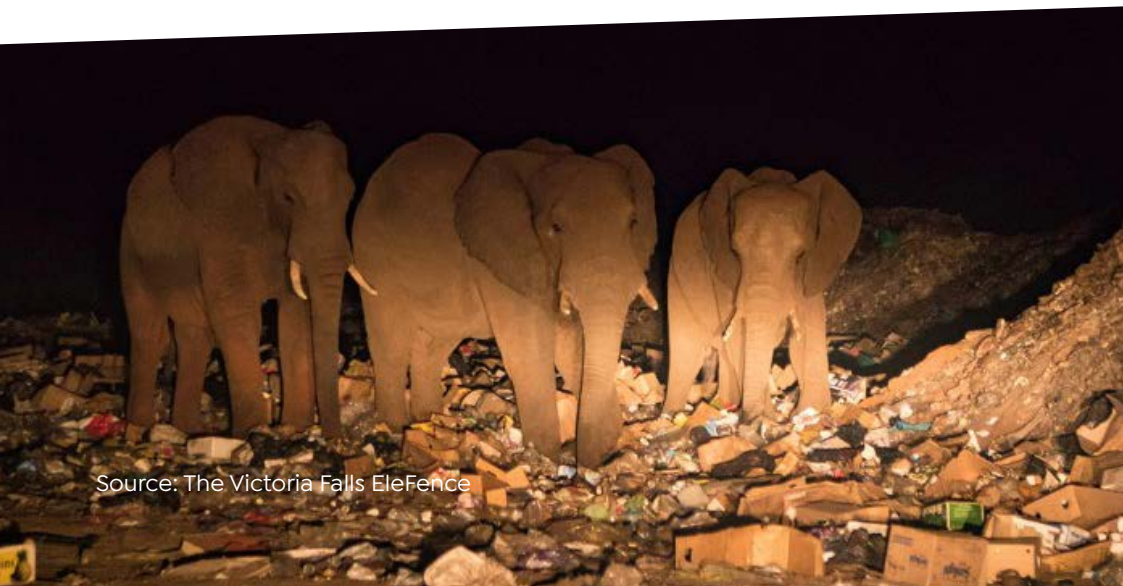
The threat of plastic pollution in wilderness areas is very real. In regions like ours, where elephants and other wildlife roam freely, discarded plastic is more than an eyesore; it's a deadly hazard. Heartbreaking evidence has emerged of elephants with stomachs full of plastic, leading to severe health problems and, in some cases, death. By participating in this initiative, we are taking an active stand against this environmental threat and doing our part to preserve the wild spaces we call home.

KEEPING VICTORIA FALLS CLEAN

Machaba Safaris supports the Keep Victoria Falls Pristine Society by donating bin bags and gloves to assist with their ongoing clean-up efforts. This passionate community initiative is dedicated to keeping Victoria Falls and its surrounding areas litter-free, including the roads to the airport and the Zambian and Botswana borders.

Their work goes beyond clean-ups. The Society tackles the root causes of waste by educating the public on the value of a clean environment, and encouraging a cultural shift toward responsible waste management. They also collaborate with stakeholders to improve waste disposal infrastructure and actively promote recycling and eco-friendly practices alongside partners such as Greenline Africa.

By contributing to this effort, we help protect one of Africa's most iconic natural wonders and support a cleaner, healthier environment for all.



Source: The Victoria Falls EleFence



Source: EleCollection



LITTER CLEAN-UPS WITH MCC

As part of the Machaba Conservation Club (MCC), we work with 130 Standard 6 students from Moremi Primary School, teaching lessons that include the importance of caring for our rivers and the impact of litter on wildlife and communities. To bring this learning to life, we organised a large litter clean-up along the river in Maun, giving the learners a chance to turn their classroom knowledge into real-world action while taking pride in protecting their environment.

We plan to make these clean-ups a regular activity on weekends when we are not out on educational game drives. This creates a positive cycle of engagement, ensuring the children stay inspired and connected to conservation in both theory and practice throughout the year.





BALANCING GUEST COMFORT WITH ENVIRONMENTAL RESPONSIBILITY

At Machaba Safaris, we are committed to achieving a balance between maximum guest comfort and minimal impact on the environment. Our camps feature iconic canvas tents, cooling plunge pools, and inviting communal bars and dining areas, along with cozy reading nooks. While we prioritize guest experience, we consciously forgo certain conveniences, such as hair dryers and air conditioning, to reduce our ecological footprint.

Our commitment to sustainability is reflected in our energy practices. Camp electricity is generated through a hybrid system combining solar energy with a backup generator, significantly reducing our carbon emissions. We utilize low-energy-consuming appliances and light bulbs to ensure our energy use remains efficient and eco-friendly.

Importantly, our camps are designed without permanent fixtures, allowing for rehabilitation of the sites within just 1.5 years after dismantling. This approach minimizes long-term impact on the land and facilitates the return of the natural environment. We also manage waste responsibly through separate bio plants that process solids from our kitchen, laundry, and staff village, supporting our sustainability goals.

FIGHT AGAINST CLIMATE CHANGE

We are committed to beginning an emission reduction initiative by transitioning to more energy-efficient practices in our operations by increasing solar energy plants. Within the next year, we will develop a Climate Mainstreaming Strategy for Machaba Safaris. We aim to increase our reliance on renewable energy sources by installing additional solar panels at our facilities. Our recycling program will be enhanced with increased awareness among staff and guests, aiming to recycle at least 50% of our waste by the end of the year. We are determined to phase out single-use plastic items in our operations, replacing them with sustainable alternatives.



RECYCLING AND WASTE PROJECTS

Machaba Safaris actively works to reduce the amount of waste we send to landfills. By recycling more of our by products and materials, we lessen the need for new materials, thereby decreasing toxic gas emissions. For example, we use stainless steel and glass bottles in conjunction with a reverse osmosis machine to purify our drinking water, significantly reducing reliance on plastic water bottles.

We also support and participate in waste management campaigns whenever possible. An example of this is our involvement with the North-West District Council, which conducted a clean-up campaign in Khwai Village on March 10, 2023. This initiative aimed to encourage community participation in maintaining a clean and safe environment. Machaba Camp contributed by providing a vehicle and volunteers, including both young and old community members, to support the cleanup efforts. We also accommodated some members of the Council, further strengthening our ties with the local community. Machaba Zimbabwe also supports Pristine Society, a community-based movement to keep Victoria Falls clean, one of the World's Seven Natural Wonders in a World Heritage site where communities rely on tourism for their livelihoods.

Through these initiatives, Machaba Safaris demonstrates our dedication to sustainable practices that protect the environment while enhancing the guest experience. Our goal is to ensure that our operations contribute positively to both nature and the communities we engage with, preserving the beauty of our surroundings for future generations.





Zambezi
**ELEPHANT
FUND**

SUPPORTING THE ZAMBEZI ELEPHANT FUND

Machaba Safaris proudly supports the Zambezi Elephant Fund by donating bednights at Mana River Camp for their annual fundraising raffle. These raffles help raise vital funds for conservation efforts in the Zambezi Valley, protecting elephants and their habitats. We're honoured to contribute to this important work.





SUPPORTING REGIONAL CONSERVATION COLLABORATION

Machaba Safaris proudly sponsored a regional workshop held in July 2025, which brought together over 60 delegates from seven countries to develop a standardised ecosystem map for the Cubango-Okavango River Basin.

Organised by the PLuS Alliance, OKACOM, and the Okavango Research Institute, the workshop focused on using the IUCN Global Ecosystem Typology to guide long-term conservation and sustainable management across Angola, Namibia, and Botswana.

The event highlighted the basin's vital ecosystem services, such as clean water, food, materials, and cultural value, and emphasised the need for stronger data sharing, institutional capacity building, and inclusive cross-border governance.

We are honoured to support initiatives like this that strengthen regional cooperation and protect the biodiversity of one of Africa's most important ecosystems.

