



# TAMBARARE CAMP

AN A&K SANCTUARY



*Ol Pejeta Conservancy, Kenya*





*Native fever trees give shade to the tented camp*

# A sanctuary for encountering endangered species on Kenya's Laikipia Plateau

Pitched among fever trees in the shadow of Mount Kenya, deep in the 90,000-acre Ol Pejeta Conservancy, Tambarare Camp is the area's most luxurious and exclusive camp. In relatively recent times Kenya's central Laikipia Plateau has become well known for its high-profile conservation initiatives. Set in gently rolling yet ruggedly dramatic landscape, the conservancy is presently home to the last two northern white rhinos on earth, as well as the other four of the Big Five. With just 10 opulent tents and a private villa, Tambarare Camp is a bastion of low-key luxury and can't be beaten as a base from which to explore this awe-inspiring wilderness.



# Six Reasons to Choose Tambarare Camp



- 01
- 02
- 03
- 04
- 05
- 06



*Spotting rhino is an unforgettable experience*

Spectacular secluded setting in the 90,000-acre Ol Pejeta Conservancy, home to the last two northern white rhinos on earth.



*There are twice-daily game drives*

Abundant wildlife with ample opportunity to see the Big Five and perfectly placed in front of a popular waterhole.



*Guests can join anti-poaching units*

Activities beyond the usual safari fare, including meeting the northern white rhinos, lion tracking, and joining the anti-poaching dog unit.



*Downtime at the Boma Bar*

First-class family-friendly service and an utterly spoiling atmosphere.



*The low-key luxury interiors*

Intimate camp, with just 10 rooms and one Private Villa with two bedrooms.



*A chef tends to the vertical garden*

Low-impact, high-quality design and innovative sustainability efforts including a vertical garden providing homegrown greens for the chefs.



# The Camp



With a thoughtful low-impact design that doesn't skimp on wow factor, Tambarare Camp reflects a profound respect for nature. It's strategically located in the award-winning Ol Pejeta Conservancy to face a favorite gathering place for an extraordinary variety of game, so guests can enjoy drinks or dinner while revelling in widescreen views of buffaloes, zebras, rhinos, elands, and other species grazing on the plains. The 10 opulent guest tents plus a Private Villa mean an intimate experience is guaranteed. The main tent is lined with comfortable sofas and chairs to encourage relaxation and reflection, and its adjoining Boma Bar is just the setting for a well-earned sundowner and the sharing of stories.

Nature and the unique Kenyan setting also inspire the luxury interiors, from sun-bleached wood and wicker lampshades to exuberant fabrics and striking colour-pop portraits of Samburu women. With their polished teak floors and locally sourced objects, the individually decorated canvas tents are rooted in their surroundings for a contemporary boutique-meets-bush style.

*After dark at the firepit*



*"Polished teak floors, patterned fabrics and locally sourced objects give a boutique-meets-bush feel."*



*The camp is decorated with rich textiles*



# The Camp



## BOMA BAR

For that all-important sundowner, the refined wooden-decked Boma Bar tent is open on all sides to survey the surrounding grasslands.

## INSPIRATIONAL ACTIVITIES

On top of enjoying exhilarating game drives, guests can visit the last two surviving northern white rhino, track lions and join an anti-poaching dog unit.

## FAMILY SAFARI CAMP

With well-spaced rooms for greater privacy, Tambarare is perfectly pitched for families. Children will be enthralled by encounters with iconic African animals in their natural habitat and cultural experiences such as learning how locals make use of the landscape's shrubs and plants.

## BUSH BOUTIQUE

The curated selection of African-crafted items in the on-site Bush Boutique means guests can take home more than just memories from this incredible place.

## ECO CREDENTIALS

The camp is built to a low-impact design, the chefs harvest leafy greens from a vertical garden on-site and electricity is generated from solar power.

## WATERHOLE

An abundance of wildlife – from buffaloes to zebras – can be seen from the main area and some of the rooms as well as the Private Villa.



CLOCKWISE FROM LEFT

*Wildlife is on show from dawn to dusk*

*Enjoy early-morning coffee on the deck*

*The Boma Bar is a sundowner spot*



# The Camp



Dinner for guests at the Private Villa

The interiors feature exuberant fabrics

GPS Coordinates	GPS 01' 57.3" N, 36° 48' 32.5" E
Open Year Round	Yes
Number of Rooms	10 tents and one Private Villa (with two bedrooms)
Maximum Number of Guests	24
Child Policy	Children of all ages are welcome. Children under 15 must share with an adult
Guide/Pilot Accommodation	Yes; 3
Wheelchair Accessible	No
Power Supply	Solar power with back-up generator and inverter
WiFi Available	Yes, in all areas
Binoculars Provided	Yes; Leica binoculars provided for every guest
Camp Fenced	No
Credit Cards Accepted	Visa, MasterCard
Currencies Accepted	USD, Pound, Euro, and Kenyan Shillings
Vegetable Garden	Yes



# The Tents & Private Villa



The design of Tambarare Camp is beautifully low impact. There are just 10 tents and a two-bedroom Private Villa (great for families), all with rippling canvas, billowing white curtains, teak floorboards, and private verandas. As a result they feel luxurious yet unfussy, and utterly immersed in the spectacular surroundings, with cinematic views and unfiltered sunlight on tap.

*Double basin in the ensuite bathroom*



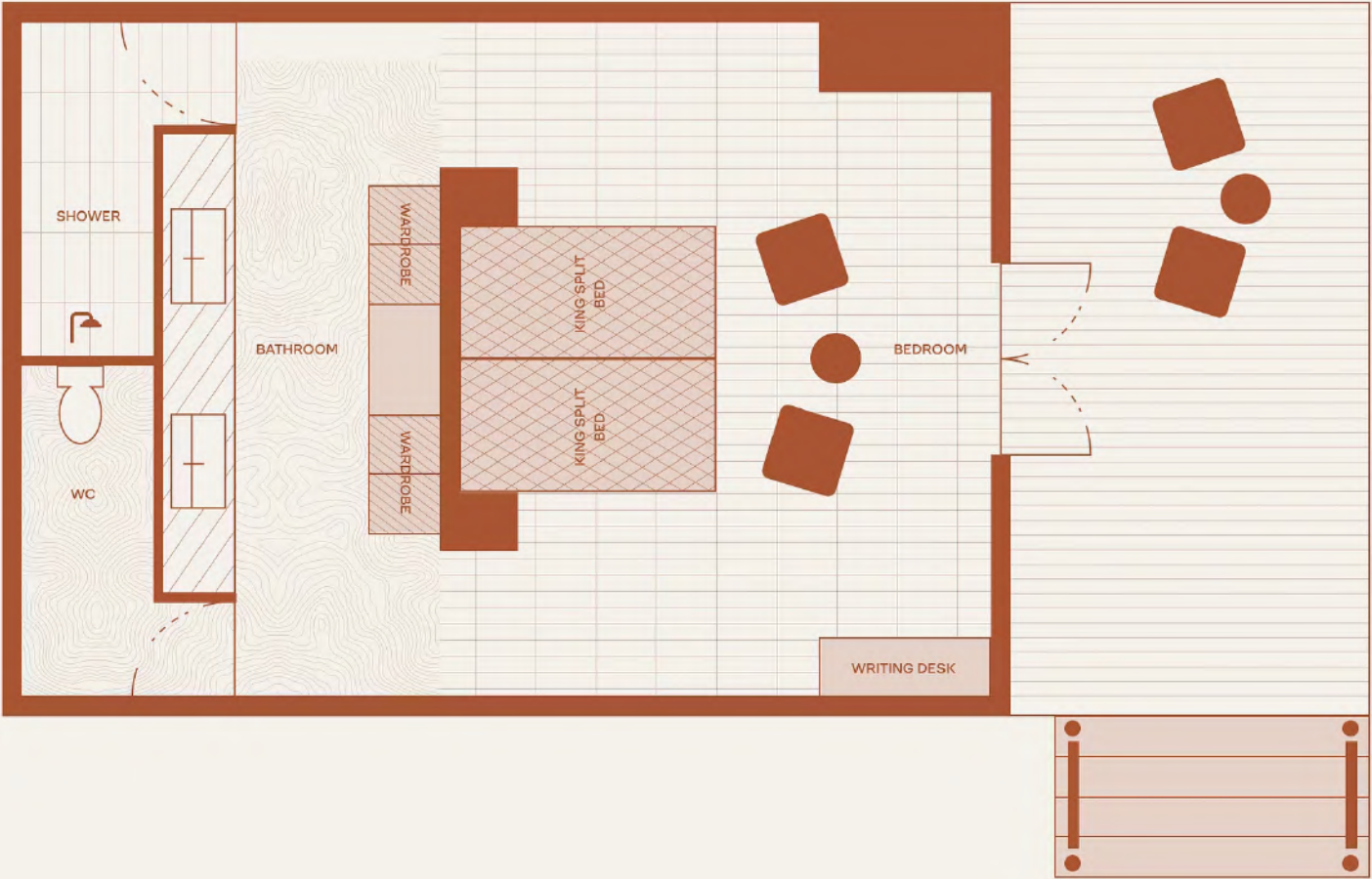
*"With billowing white curtains,  
the luxury tents are romantic  
hideaways."*



*View from the super king-size bed*



# The Tents



**LUXURY GUEST TENT | SLEEPS 2 | 68 SQM**

Each luxury guest tent is large and airy with billowing white curtains and a private veranda overlooking the plains. It has super king-size beds and an ensuite bathroom with a walk-in shower and double basin.

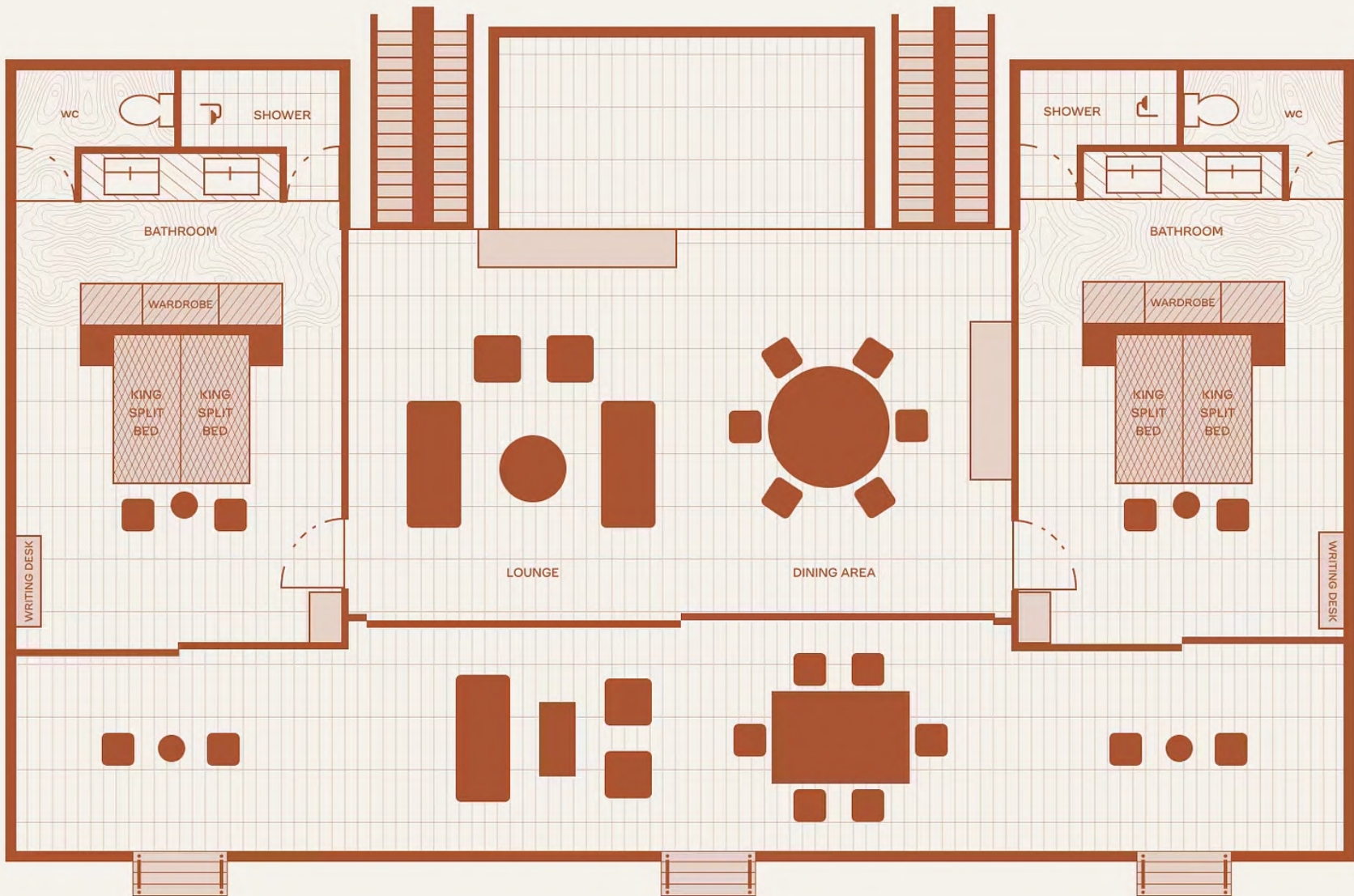
Room Size	68m2
Bed Configuration (King or Twin)	All rooms can be converted to a king or twins
Triple Rooms Available	Yes; subject to availability
Mini Bar	Yes
Tea and Coffee Station	Yes
Air Conditioning	No
Overhead Fan	Yes
Mosquito Net	Yes
Plug Type	Type G Plug, USB and USB Type C
Bath	No
Indoor Shower	Yes
Outdoor Shower	No
Hairdryer	Yes



# The Private Villa



Maximum Number of Guests	4
Room Size	210m2, two bedrooms
Bed Configuration (King or Twin)	All rooms can be converted to a king or twins
Triple Rooms Available	Yes; subject to availability
Mini Bar	Yes, communal lounge
Tea and Coffee Station	Yes, communal lounge
Air Conditioning	No
Overhead Fan	Yes
Mosquito Net	Yes
Plug Type	Type G Plug, USB and USB Type C
Bath	No
Indoor Shower	Yes
Outdoor Shower	No
Hairdryer	Yes
Private Vehicle	Yes
Private Chef	Yes
Private Housekeeper	Yes



**PRIVATE VILLA | SLEEPS 4 | 210 SQM**

This ensuite two-bedroom villa is ideal for families. It has super king-size beds, floor-to-ceiling views of the landscape, a spacious private lounge, and a dining area where meals can be served.





*The open-sided dining area is cooled by the breeze*

# Food & Drink



The brilliant bush-kitchen team at Tambarare Camp serve delicious safari-style cuisine with a local twist – from homegrown seasonal salads and freshly baked breads to grilled meats and fish, rich stews and pasta dishes. The dining experience is taken up a notch by the wonderful setting: sitting under rippling canvas, at linen-clothed tables, accompanied by the sound of rhinos grazing and the occasional lion's roar. As well as providing three meals a day, the friendly team is always rustling up delicious treats, be it freshly brewed coffee and home-baked scones out in the bush, or a favorite campfire cocktail, and will carefully attend to guests' wishes and dietary requirements. As with all A&K Sanctuary lodges and camps, food and drink is included.

- A continental or English breakfast is served at the lodge before your morning activity.
- Lunch is enjoyed back at the lodge or picnic-style in the bush if you're out game-spotting.
- Pre-dinner drinks – a sundowner at the Boma Bar or a convivial cocktail around the campfire is always a good idea – are followed by a three-course à la carte dinner, expertly assembled from fresh, locally sourced, seasonal ingredients.

*Ingredients are fresh and seasonal*





# Camp Location



Kenya's dramatic Laikipia Plateau – reached in about five hours from Nairobi – is one of the country's most crucial areas in terms of biodiversity, containing wildlife densities which compete with the Masai Mara. Set against the striking backdrop of Mount Kenya, it spreads over 3,600 square miles of plains and acacia-covered hills.

Within it is the 90,000-acre Ol Pejeta Conservancy, where the Big Five roam, including the last two northern white rhinos on earth. The protected rhino sanctuary that houses these magnificent creatures is also home to the largest black rhino population in East Africa. Guests witnessing the animals in their natural habitat get to contribute to the ongoing efforts to

protect them. Added to that, the conservancy offers a range of day and night safaris, lion tracking, and guided bush walks. One of only three wildlife conservancies in Africa to achieve IUCN Green List status, Ol Pejeta works diligently to protect animals – and to support the people who live around its borders, prioritising community development alongside wildlife conservation.

Tambarare Camp is cleverly pitched among fever trees in a secluded spot in the conservancy. Its location right beside a much-used watering hole means guests needn't leave their low-key luxury sanctuary to enjoy front-row views of buffaloes, zebras, rhinos, elands, and other species grazing on the plains.

*Shaded walk in the Kenyan bush*



*Tambarare's secluded river setting*



# Getting There



Nairobi Wilson Airport (NBO) to Nanyuki Airstrip / Nairobi Wilson  
Airport (NBO) to Kamok Airstrip

30- to 40-minute flight



Nanyuki Airstrip to the Camp / Kamok Airstrip to the Camp / Nairobi  
to the Camp

1-hour 45-minute drive / 15-minute drive / 4- to 5-hour drive

Please note, luggage restriction for light aircraft is 20kg/44lbs per person in a soft-sided bag,  
including hand-luggage.



# Experiences



African game drives are always a thrill, but at Tambarare Camp they are even more exhilarating. The unique combination of location, landscape and habitat makes possible a number of activities not frequently associated with the safari experience, including lion tracking and cycling. Guests can also join the canine anti-poaching unit, visit local communities to see how the conservancy aims to make a positive impact through education, agriculture and livestock enterprise, and head off for pulse-quickenings runs across the Ol Pejeta plains. And of course, there is the opportunity to see the last two remaining white northern rhinos on earth.



*Guides know the best viewing spots*

## GAME DRIVES

Expert-led game drives in the early morning and late afternoon take guests directly into this extraordinarily biodiverse habitat. Rhinos are among the easiest to spot, but Ol Pejeta is also home to a tremendous variety of species, large and small.



*The incredible sight of a mighty rhino*

## MEET THE NORTHERN WHITE RHINOS

Ol Pejeta has a worldwide reputation for its rhinoceros-conservation and translocation initiatives. Don't miss the opportunity to get up close and personal with the last two northern white rhinos on earth, Najin and Fatu, and learn about their incredible story.



*Learn about local flora on a bush walk*

## GUIDED BUSH WALK

A stroll in the African wilderness is an unforgettable experience. And because Tambarare Camp is located within a private conservancy, guided walks are not merely possible but strongly recommended.



*Venturing out after dark*

## NIGHT DRIVES

Guests can venture out after dark on night game drives in search of nocturnal species, such as the aardvark, white-tailed mongoose, zorilla (striped polecat) and bat-eared fox.



# Experiences



African game drives are always a thrill, but at Tambarare Camp they are even more exhilarating. The unique combination of location, landscape and habitat makes possible a number of activities not frequently associated with the safari experience, including lion tracking and cycling. Guests can also join the canine anti-poaching unit, visit local communities to see how the conservancy aims to make a positive impact through education, agriculture and livestock enterprise, and head off for pulse-quickenings runs across the Ol Pejeta plains. And of course, there is the opportunity to see the last two remaining white northern rhinos on earth.



*Meet the vital anti-poaching unit*

## **K9 ANTI-POACHING UNIT**

This ace canine anti-poaching team is an essential part of Ol Pejeta's conservation efforts. Join the dogs and their handlers for a unique sniff of adventure.



*A pride of lions in their natural habitat*

## **LION TRACKING**

The careful monitoring of Ol Pejeta's lion population is an ongoing project; guests at Tambarare can accompany rangers and actively help protect these big cats.



*Enjoying Ol Pejeta's running track*

## **RUN THE WILD**

For fitness and adventure fans, there is no better way to train than on a three to four-mile running route across the Ol Pejeta plains – a rare activity in the bush.



*A&K Philanthropy supports the LifeStraw safe-water program*

## **MEET THE NEIGHBORS**

Visit the local communities and see the work Ol Pejeta Conservancy undertakes in health care services, sustainable energy and community enterprise initiatives, first hand.



# Wildlife & Nature

---

Rhinos are the stars of the abundant wildlife in Ol Pejeta Conservancy — as well as being home to the last two northern white rhino on earth, it has the largest black rhino sanctuary in East Africa. Other rare species are found in this central region of Kenya too, as Laikipia is the only remaining refuge for the country’s population of wild dogs. Other rare species are found in this central region of Kenya too, as Laikipia is the only remaining refuge for the country’s population of wild dogs and the endangered Grévy’s zebra also roam its plains. Predators, on the other hand, thrive in the conservancy, with some of the highest densities in Kenya — from lions and leopards to black-backed jackals and caracals.

Game drives provide ample opportunity to spot the Big Five, cheetahs, oryx and bat-eared fox, along with giraffes, hippos, zebras, and, between January and March, more than 500 bird species, including eight types of weaver birds, known for their rainbow of colours and intricate nests.

*A lion cub on the prowl*



*Ol Pejeta plays a key role in rhino conservation*



# Your Tambarare Camp Safari



*Early morning coffee on a game drive*

Days at Tambarare Camp deliver one-in-a-lifetime adventure as well as serene moments to simply soak up the incredible nature all around. The lodge's expert team of guides and support staff cleverly choreograph every detail – from action-packed rhino-spotting morning game drives to evening cocktails around the campfire.

## **A TYPICAL DAY MIGHT INCLUDE:**

- **Wake-up Call** — Enjoy a tea or coffee on your own deck as the soft morning light illuminates the plains.
- **Breakfast** - A fresh, hearty breakfast served in the camp: look out for morning animal action at the watering hole.
- **Morning Activity** - Set out with binoculars primed to spot rare rhinos and the rest of the Big Five.
- **Lunch** - Return to the lodge for a delicious lunch of safari-style dishes.
- **Afternoon Activity** - Another opportunity to explore with the expert guides.
- **Drinks and Dinner** - The moment to sit back and swap stories of the day's adventures over sundowners and a three-course dinner.



# The Details



## HONEYMOONS, ANNIVERSARIES & SPECIAL OCCASIONS

Romance and luxury are woven into each of our stays, but the Tambarare Camp team adds an extra sprinkling of magic when it comes to special occasions. From a private dinner on the deck to a traditional Maasai blessing ceremony, the team creates unforgettable experiences that celebrate a visit to the unique and cinematic setting of Kenya's Ol Pejeta Conservancy.

## FAMILIES WITH CHILDREN

The natural spectacle and cultural impact of a Kenyan safari is something that families will remember as a shared experience forever: close encounters with rare African animals roaming free; learning to shoot a bow and arrow or how to identify and use the area's unique plants; the warmth and spirit of the team, the stories of the local people. Tambarare is our family safari camp, thoughtfully designed, with well-spaced rooms for greater privacy.

## INCLUSIONS

- All meals, non-alcoholic and alcoholic beverages (including premium brands)
- Transfers to/from Nanyuki Airstrip or Kamok Airstrip
- Game viewing activities including: game drives, and meet the northern white rhinos
- Bed night levy
- Emergency medical evacuation
- Laundry services

## EXCLUSIONS

- Conservancy fees
- International and domestic flights
- Road transfers to and from other camps and lodges
- Travel insurance, boutique purchases, gratuities, and all other items of a personal nature
- Additional activities not listed



*Tambarare's team can arrange candlelit dinners*





*The knowledgeable guides are always on hand*

# Travel Tips



## WHAT TO PACK

Clothing should be cool and comfortable; and colours should blend in with nature as much as possible. Greens, browns and khaki coloured clothing are advisable for safaris. Guests are advised to pack their swimwear. We suggest long sleeves and long trousers for morning and evenings due to mosquitoes; and a fleece, sweater or warm jacket for morning and evening game drives. Sturdy and comfortable shoes are essential. A complimentary overnight laundry service is offered in the camp.

Accessories: Sunscreen, sunglasses and hats are essential. Binoculars and good cameras are an absolute must. The camp provides a torch as well as complimentary mosquito repellent and toiletries.

## HEALTH

Please discuss health precautions for your travel itinerary with a qualified health professional at least six weeks before departure. We also advise all travellers to take precautions against malaria.

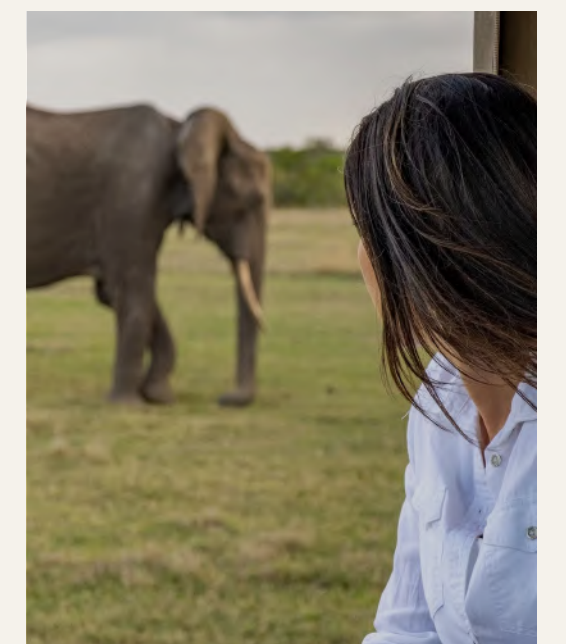
## MONEY & CREDIT CARDS

All extras can be paid for with Visa, MasterCard, American Express and traveller's cheques. US dollars, British pounds, Euros and Kenyan shillings are also accepted; however, change will be given in the local currency.

## GRATUITY GUIDELINES

Tipping and gratuities remain entirely at your discretion.

*An elephant in the Maasai Mara*







While it's impossible to predict the weather on the wild plains of the Laikipia Plateau, guests might find it helpful to learn how a visit to Tambarare Camp might differ from one month to the next: from when to book the best-value stays to the ideal time for maximum Big Five viewing.



*Iconic animals are never far away*

**JANUARY–MARCH**

Wildlife congregates around water sources, offering excellent game viewing opportunities. Migratory birds make their seasonal appearance in the Ol Pejeta Conservancy. Visitor numbers are low as it's early in the season. Rain might become more frequent from mid-March.



*Big cats are busy during this season*

**APRIL–JUNE**

The air is crystal-clear, leading to dramatic skies with a chance of rainbows. There is increased predator activity as big cats work harder for their prey. Visitor numbers are still low, resulting in more exclusive wildlife and photography opportunities.



*Spotting rhinos is a highlight at Tambarare*

**JULY–OCTOBER**

This is prime time for Big Five enthusiasts. The landscape turns from green to brown as water sources shrink. Wildlife is attracted to the remaining water resources, and high drama unfolds around the waterholes.



*A giraffe among the treetops*

**NOVEMBER–DECEMBER**

The short rains in November result in lush landscapes, creating ideal conditions for photographers. Spectacular scenery and active animals gathering at watering holes (plus the festive holidays) make December a good time for family safaris.



# A&K Philanthropy Initiatives in Kenya



A&K Philanthropy strives to protect the natural habitat

## JOURNEYS WITH PURPOSE

The A&K Philanthropy nonprofit network now spans 24 countries on all seven continents, positively impacting hundreds of thousands of lives and helping preserve some of the world’s most precious ecosystems. Our initiatives focus on education, enterprise, health and environment, aiming to support and empower local communities to facilitate the protection of their surroundings, and to ensure that the people in the places where we travel are also benefitting directly from tourism.

## SAFE WATER FOR SCHOOLS

Since 2017, A&K Philanthropy has partnered with LifeStraw, makers of an accessible water filtering and purification device, to provide safe water to thousands of children in India, Kenya, Tanzania, Uganda, Vietnam and Zambia. When the program first started, we were proud to deliver sustainable, safe water to children in Kenya’s Maasai Mara. Since then, AKP has funded and distributed 829 filtration systems in schools, with each filter serving up to 100 children for a period of five years. Guests in the areas where LifeStraw has been installed can see firsthand how this simple device makes a great impact on the community's overall health and wellbeing.

## SCHOOL LUNCH PROGRAM

AKP has partnered with local communities throughout Kenya, Namibia, Uganda and Zambia to provide daily nutritious lunches to local students. Since the project began in 2017, it has provided daily lunches to more than 12,000 students in 16 schools spanning the communities from the Maasai Mara to Bwindi Impenetrable Forest National Park and from Mosi-oa-Tunya National Park to the Puros Conservancy.





A&K SANCTUARY