



## INFORMATION MANUAL

---

NOTE: To ensure you access the latest edition, please use the link that was shared.  
If you download and save the document, kindly ensure you regularly update with the latest version via the link.  
Updated October 2024

# Contents

<b>Important Contact Information</b>	4	<b>Amboseli Eco-System</b>	16
<b>Unique Selling Points</b>	5	Elewana Tortilis Camp	17
<b>The Land And Life Foundation</b>	6	<b>Meru National Park</b>	19
<b>The Shanga Foundation</b>	8	Elewana Elsa's Kopje	20
<b>Awards</b>	9	<b>Laikipia</b>	22
<b>Weddings &amp; Blessings</b>	12	Elewana Loisaba Tented Camp	23
<b>Family &amp; Multi-Generational Safaris</b>	13	Elewana Loisaba Star Beds	25
<b>Our Locations</b>	15	Elewana Loisaba Lodo Springs	27
		<b>Lewa Wildlife Conservancy</b>	29
		Elewana Kifaru House	30
		Elewana Lewa Safari Camp	32
		<b>The Masai Mara</b>	34
		Elewana Elephant Pepper Camp	35
		Elewana Sand River Masai Mara	37
		<b>Arusha</b>	39
		Elewana Arusha Coffee Lodge	40
		<b>Tarangire Eco-System</b>	42
		Elewana Tarangire Treetops	43
		<b>Ngorongoro Conservation Area</b>	45
		Elewana Manor At Ngorongoro	46
		<b>Serengeti Eco-System</b>	48
		Elewana Serengeti Pioneer Camp	49
		Elewana Serengeti Migration Camp	51
		<b>Zanzibar</b>	53
		Elewana Kilindi Zanzibar	54

# elewana

— COLLECTION —

## Camps & Lodges in Harmony with Africa

The Elewana Collection of 16 boutique lodges, camps and hotels is known for its unique accommodations in iconic locations across Kenya and Tanzania. Elewana crafts authentic and memorable safari experiences, providing the highest quality of luxury and comfort. Warm and genuine East African hospitality characterises a safari with Elewana, where guests are indulged with a luxurious and personalised stay.

The origin of the name Elewana is the Swahili word meaning “harmony”, a concept that underpins our company philosophy and influences the way we deliver unforgettable safari experiences. We continually strive to leave as little impact as possible on our surrounding environment, while creating a positive impact on local communities through our Land and Life Foundation.

The Land & Life Foundation is Elewana’s commitment to responsible tourism, ensuring future generations can enjoy the wonders of Africa and safari adventure. Land & Life believes that the sustainability of East Africa’s wildlife and habitats depends on four key actions: securing land for conservation, protecting species and their environment, providing tangible benefits to the people who live alongside wildlife, and educating the next generation of conservationists. Land & Life achieves this through four core programs - Wildlife Warrior Program, School Support, Medical Support and Nature Conservation Program.



# Important Contact Information

---

## THE ELEWANA COLLECTION

[www.elewanacollection.com](http://www.elewanacollection.com)

Nairobi Office: Mobile: +254 (0) 730 127 000  
Arusha Office: Mobile: +255 (0) 754 250 630 / +255 (0) 784 250 630  
[reservations@elewana.com](mailto:reservations@elewana.com)

### Office Hours:

Monday - Friday: 8:30 A.M. - 5:00 PM  
Saturday: 8:30 A.M. - 1:00 PM

### After-Hours Emergencies:

The Duty Manager is available 24 hours a day, 7 days a week, always on call to handle emergencies. The Duty Manager is a member of the Reservations Department, responsible for handling all reservations outside of office hours. During office hours, please deal with your reservation consultant.

### After-Hours Emergency Contacts:

[reservations.dutymanager@elewana.com](mailto:reservations.dutymanager@elewana.com)  
Kenya: + 254 (0) 713 474 171 or +254 (0)731 700 084  
Tanzania: + 255 (0) 788 650 511 or +255 (0) 699 633 966

### Sales and Marketing Contacts:

Hospitality Director	Jarryd King	<a href="mailto:jarryd.king@elewana.com">jarryd.king@elewana.com</a>
Director of Marketing & Communications	Alina Haq	<a href="mailto:alina.haq@elewana.com">alina.haq@elewana.com</a>
Trade Representation UK	Liz Harper	<a href="mailto:liz@lizharpertravel.com">liz@lizharpertravel.com</a>
Press Office Representative UK	Laura Shelbourne	<a href="mailto:laura@laurashelbourne.com">laura@laurashelbourne.com</a>
Trade Representation USA	a2b Marketing	<a href="mailto:rita@a2bmarketing.net">rita@a2bmarketing.net</a>
		<a href="mailto:amanda@a2bmarketing.net">amanda@a2bmarketing.net</a>
		<a href="mailto:alison@vivalifestylepr.com">alison@vivalifestylepr.com</a>
Press Office Representative USA	Alison Sager	

### Reservation Contacts for East Africa-based Tour Operators / DMC's:

Note: Overseas Tour Operator should contact their preferred East Africa Ground Handler for reservations and enquiries. If you don't have one please contact us and we will be happy to provide a list of contacts.

Head of Reservations	Louis Okech	<a href="mailto:Louis.okech@elewana.com">Louis.okech@elewana.com</a>
Business Development Manager	Diana Cheron. Lang'at	<a href="mailto:diana.langat@elewana.com">diana.langat@elewana.com</a>

### Online Reservations

You can check real time availability online at <http://www.elewana.resrequest.com>  
Elewana Collection property profiles are also on WETU.

# Unique Selling Points

---

## THE ELEWANA COLLECTION

Luxury is defined by that which is hardest to attain. In our busy world, this is often quite simply time with your family, an opportunity to relax and unwind and - most of all - the thrill of a real adventure. The Elewana Collection understands this; we provide more than fresh cotton sheets, elegant rooms, and gourmet meals.

### Responsible Tourism

Responsible tourism is a key focus for each and every Elewana Collection property, be it revenue-sharing projects that support local conservancies, sponsorship of schools, students and medical clinics, or responsible recycling of waste materials. Property managers are passionate about their local environments and communities, and constantly strive to find new and sustainable eco-friendly ways to protect and support them. All Kenya-based properties are members of Ecotourism Kenya, the majority achieving the highest eco-accolade of a Gold Eco-rating. Five of our Kenyan properties have attained a Silver Level International Eco-Rating with Sustainable Travel International. All Elewana properties in Tanzania have been certified with either SEED or SAPLING eco rating with Responsible Tourism Tanzania. We are full members of GSTC. The Global Sustainable Tourism Council (GSTC) establishes and manages global sustainable standards with the aim of increasing sustainable tourism knowledge and practices among public and private stakeholders.

### Prime Locations

Each of our properties lies in an outstanding location, either within prime game viewing areas with spectacular views (often in completely private wildlife conservancies), on quiet world class white sand beaches or, in the case of Arusha Coffee Lodge, the prettiest and most convenient spot in Arusha.

### Professional Guiding

Elewana Collection prides itself on its fun, experienced and knowledgeable guides. Most guides come from the local area and have an intimate knowledge of their surroundings - what makes each season different from the last and how the local wildlife families interact, grow and change from one year to the next. All guides are minimum Bronze KPSGA qualification, (or comparable in Tanzania), and many have achieved the prestigious Silver or Gold level.

### Diverse Activities

Elewana Collection offers the complete bush and beach experience - game drives, guided bush & forest walks, horseback riding, camel trekking, lion tracking, fishing, cultural visits, spa treatments and massages, sundowners at sunset, surprise bush meals, scuba, snorkelling, kite surfing in warm tropical waters, starlit dinners on white sandy beaches and the experience of sleeping out under the African sky.

### Small, Unique & Elegant Properties

Each of our camps, lodges, and beach hideaways has its own individual style and charm, offering experiences that make it completely unique from any other property. However, the properties of the Elewana Collection all share the same ethos - high quality management and professional service, attention to detail, delicious culinary creations, prime locations, small and intimate in size, and offering first class activities with a savvy blend of low-impact tourism.

### Child Friendly

We encourage families to experience an East African safari as a wonderfully inspiring, educational and memorable family holiday. The local East African culture treasures children, and our activities and wildlife fascinate parents and children alike. Our small boutique properties allow for personalized and flexible mealtimes, and many of our properties also offer accommodation specifically designed for families.

### Cultural Experiences

All of our properties employ most of their staff from the surrounding community, therefore guests have a chance to intimately encounter the fascinating cultures of that area. We encourage our guests to visit the local community and conservation projects where they can meet the people and experience, first-hand, how their stay at an Elewana Collection property makes a difference. Visits can be arranged to traditional villages, local homesteads and schools.

# The Land And Life Foundation

AND ELEWANA

The Land & Life Foundation is the sustainability arm of the Elewana Collection, Cheli & Peacock Safaris, Sky Safaris, Sopa Lodges and Explorer. Working with communities and conservation projects in the areas surrounding Elewana's properties, the Land & Life Foundation supports local people and preserves the wildlife and habitats of these important landscapes. With all operational costs covered by the above named partners, 100% of every single donation from guests and philanthropists goes straight into benefiting the communities, schools and wildlife in the areas where we work.

[www.landandlife.foundation](http://www.landandlife.foundation)

The Land & Life's vision is; A sustainable future where communities and wildlife thrive together across conservation areas, safeguarding our planet for the next generation.

## Land and Life's Sustainability Ethos

At the Land & Life Foundation, our purpose is to ensure that sustainability and conservation best practices are employed across our group of companies and to ensure that we are active agents of change in the protection of Africa's environment and its communities through our programs and projects. We have 3 main pillars:

### 1. Environmental Management and Conservation

*Overall Goal: To achieve net zero emissions and support efforts to ensure communities are actively participating in conservation efforts and directly reaping the benefits from this.*

With our properties in some of the most biodiverse areas on the continent, Elewana embraces the responsibility of helping to protect both the habitat in which the wildlife live as well as specific vulnerable and endangered wildlife species. In both Kenya and Tanzania we have been pioneers in supporting what we call "Parks Beyond Parks" - conservation areas that lie outside of nationally protected parks. In total in both countries we play a key role in protecting land extending to over 1.36 million acres.

We are supporting operations in conservation areas across Kenya and Tanzania, including initiatives from anti-poaching in Amboseli and human-elephant conflict mitigation in Tarangire, to turtle conservation.

- Tortilis Camp, Elephant Pepper Camp and Tarangire Treetops have all been pivotal in driving the development of community-owned wildlife conservancies. In each case, the land outside of national parks and reserves has been secured solely for the preservation for wildlife, with lease, conservancy and/or bed night fees going directly to the owning/managing community. Community-owned wildlife conservancy models have proven incredibly effective,

providing tangible benefits to communities in exchange for protection of wildlife areas.

- Tarangire Treetops is one of the largest contributors to the conservation projects of Randilen Wildlife Management Area, administered by Honeyguide Foundation. One of their most important projects is in human/wildlife conflict management, working to mitigate conflict between local farmers and elephants.

### 2. Impact Driven Community Development & School Support

*Overall Goal: To improve the quality of life of the communities we operate in, whilst ensuring that they ultimately become the owners and managers of these efforts.*

Elewana strongly believes that providing tangible benefits to communities living around protected areas is paramount to the sustainability of East Africa's wildlife and habitats. Most of these rural communities have access to poor education and health services, typically characterised by lack of supplies and facilities as well as stretched workforces with inadequate skills. We work with these rural communities to harness the power of nature to allow them to thrive, reduce human-wildlife conflict and ensure protection of the environment. Through working with our partners, we aim to provide a reliable source of water for the local communities including livestock and wildlife, as well as providing skills and infrastructure to tackle food insecurity through regenerative agriculture.

In addition, passion for wildlife conservation cannot exist without knowledge about wildlife. The Land & Life Foundation continues the commitment to educate the next generation of conservationists, to build a passion for wildlife in East Africa's key conservation areas and to inspire the communities we work with to conserve East Africa's wildlife for generations to come.

### 3. Social Enterprise Growth

*Overall Goal: Meaningfully impact the lives of people living with disabilities as well as those from economically underserved communities to enable them to become a positive force for change.*

Combining a dual mission of generating profits whilst also maximising benefits to society and the environment, social enterprises have the potential to bring about transformative societal benefits. Land & Life makes a concerted effort

to support these organisations which provide sustainable employment opportunities to individuals with disabilities and from economically underserved communities. This is done through providing opportunities in all our properties to sell their wares in our gift shops, as well engage in partnerships to improve current offerings as well as create new products and services.

Our key project, Shanga ([shanga.org](http://shanga.org)), based at one of our properties in Tanzania, operates in a circular value chain with the belief that everyone, regardless of their abilities or disabilities, should have the opportunity to contribute to society and lead fulfilling and dignified lives. Firstly, it provides an opportunity for individuals with disabilities to become self-sufficient and independent, as well as build their self-esteem and confidence. Additionally, it helps to break down social stigmas surrounding disabilities by promoting the abilities and strengths of the individuals.

# The Shanga Foundation

---

AND ELEWANA

*“Kindness is a language blind people see and deaf people hear.”*

This famous quote by Mark Twain is close to everyone's heart at Shanga. It is painted on our wall and is one of the first things you see as you enter the workshop.

Shanga is a self-sustaining social enterprise based in Arusha, the gateway to the Northern Tanzania safari circuit, which runs an interactive creative workshop employing people with disabilities to create beautiful products.

Shanga began with beads and marbles on a kitchen table, fourteen years later it has evolved into a workshop with seven creative departments and over 50 employees, over half of whom have some form of disability. Shanga provides a safe, secure and loving environment by providing training and skills development within a nurturing work environment. This enables those employed there to proudly have a successful career showcasing their creativity and support their families while doing so. This is reflected in the smiles and vibe within the workshop.

Shanga is also committed to preserving our sensitive environment, using recycled materials in numerous innovative and ingenious ways. In 2018, over 100 tonnes of waste was diverted from landfill and used in creating their products. The Glass Department consumes the most recyclable materials by using bottles and window glass as the raw product and running the Glass Furnace on recycled vegetable cooking oil.

All visitors to Shanga are invited to take a free interactive tour to meet the staff, see their work and participate in fun free activities. Throughout the tour, which goes through all of the different creative areas, you are enthusiastically greeted with big, warm smiles and greetings in sign language, Swahili and English. Very quickly previous stereotypes are forgotten as “Ability” is the catchphrase used.

On our tours, first comes the weaving, full of looms, making a melodic ‘click-clack’ while producing a variety of soft, brightly coloured scarves, wraps, maasai shukas and blankets all made from locally grown cotton.

Then tailoring, where the underlying theme is to re-purpose fabric. A favourite is their delightful “mummy and baby” elephant cushions made from used mens’ business shirts (recycling is everywhere). The team is happy to receive your old shirts and if time permits custom make your own cushion. Next, step into the painting gallery, which is full of colour

and animals dedicated to Tinga Tinga painting, a fun cartoon style developed by a Tanzanian artist in the late 1960's. Beading follows. Beads of all shapes sizes, including glass beads made from recycled wine and spirit bottles. All jewellery design concepts start with how to incorporate as many components that are made on site intertwined with traditional Maasai beading techniques while staying on trend for the worldwide market.

Shanga's highlight is that we have the first (and the only glass blowing facility) in Tanzania where a spectacular range of homeware and beads is created. This work space is silent apart from laughter, the roar of the furnaces and the sizzle of hot glass. The majority of the glass-blowers are deaf so their movements are perfectly choreographed, from a close working team. All the glass is made from recycled wine and spirit bottles; and broken window glass with the furnaces powered by recycled vegetable cooking oil.

The Tanzanian plastic ban had no impact on Shanga as we commenced making our own shopping bags from old newspapers and cardboard over twelve years ago in the aluminium area. Here you will also see the team using a variety of products, including recycled aluminium sheets and bottle caps to make mobiles and other very pretty things.

This amazing group of people have chosen to embrace life and focus on their abilities, who we are proud to have as part of our Elewana family. By including a visit to the workshop in your itinerary you will have the opportunity to support the staff and their families and join their conservation efforts by choosing a souvenir or gift with a story; “Art with a Heart”.

Clients worldwide can also support Shanga by purchasing their products. 2020 has seen Shanga develop and achieve a growth in international sales with some of this growth attributed to their relationship with DHL. Currently orders can be placed by emailing [orders@shanga.org](mailto:orders@shanga.org) with the plan by early 2021 to have streamlined the process for customers with new catalogues.

[www.shanga.com](http://www.shanga.com)

<https://www.facebook.com/ShangaTanzania>

[https://www.instagram.com/shanga\\_tanzania/](https://www.instagram.com/shanga_tanzania/)



# Awards

## THE ELEWANA COLLECTION

### Elewana

- Nominated in World Travel Awards - Africa's Leading Boutique Hotel Brand 2012/2013/2014/2015/2016
- Nominated for Design et al. Award, 2014

### Elephant Pepper Camp

- Gold Eco-rating Certification - Ecotourism Kenya - 2013-2024
- Condé Nast Traveller Readers' Choice Awards - #4 in Top 15 Resorts in Central & Eastern Africa, 2023
- Condé Nast Traveller Readers' Choice Awards - #29 in Top Resorts in Central & Eastern Africa, 2023
- World Travel Awards - Kenya's Leading Tented Safari Camp 2020
- Condé Nast Traveller The Best Resorts in the World: 2019 Readers' Choice Awards
- Condé Nast Traveller Top 30 Resorts in Africa: Readers' Choice Awards 2019
- Nominated in World Travel Awards - Africa's Leading Tented Safari Camp - 2016
- Silver International Eco-rating Certification - Sustainable Travel International, 2016
- Certificate of Excellence - Tripadvisor, 2015/2016
- Eco Warrior Award for Best Tented Camp - Ecotourism Kenya, 2013
- Mara North Conservancy won the Eco Warrior Award for Best Community Conservancy - Ecotourism Kenya, 2011
- 5 of the Best: Best Authentic Camping Experience - Travel Weekly Magazine, October 2005

### Elsa's Kopje

- Gold Eco-rating Certification - Ecotourism Kenya, 2013 - 2024
- Condé Nast Traveller Readers' Choice Awards - #12 in Top Resorts in Central & Eastern Africa, 2024
- Condé Nast Traveller Readers' Choice Awards - #1 in Top Resorts in Central & Eastern Africa, 2023
- Condé Nast Traveller Readers' Choice Awards - #7 in Top 50 Best Resorts globally, 2023
- Condé Nast Traveller Readers' Choice Awards - #10 in Top 15 Resorts in East Africa, 2022
- Condé Nast Traveller Readers' Choice Awards - #13 in Top 25 Resorts in Africa 2020
- Condé Nast Traveller The Best Resorts in the World: 2019 Readers' Choice Awards
- Condé Nast Traveller Top 30 Resorts in Africa: Readers' Choice Awards 2019
- Safari Awards Runner Up - Best Design, 2019

- Safari Awards Runner Up - Best Location, 2017
- Safari Awards Third Place - Most Romantic Property, 2017
- Andrew Harper's Reader's Choice Award - Best 20 Safari Lodges in Africa, 2013/2014/ 2015/2016
- Silver International Eco-rating Certification - Sustainable Travel International, 2016
- Certificate of Excellence - Tripadvisor, 2011 - 2016
- Nominated in World Travel Awards - Kenya's Leading Safari Lodge 2012/2013/2014/2015/2016
- Grand Award Winner - Andrew Harper, 2012
- Virgin HIP Hotel - 2010/2011/2012/2013
- Eco Warrior Award for Best Lodge - Ecotourism Kenya, 2011
- Best Accommodation / Best Small Lodge - Kenya Tourism Awards, 2011
- Silver Eco-rating Certification - Ecotourism Kenya, 2011/2012
- Recipient of Andrew Harper's coveted recommendation, 2011
- Finalist Best Safari Property in Africa and 3rd Place Best Safari Property in East Africa - The Good Safari Guide, 2011
- Best Safari Property in Africa and in East Africa - The Good Safari Guide, 2010
- Best Safari Camp in East Africa - The Good Safari Guide, 2009
- Best Development - CNBC International Property Awards, 2008
- 101 Best Hotels - Tatler Travel Guide, 2007
- 10 of the World's Coolest Pools - The Daily Telegraph, Spring 2005
- Recipient of Africa's first Eco-rating Certificate - Ecotourism Kenya, 2003

### Kifaru House

- Bronze Eco-rating Certification - Ecotourism Kenya, 2019-2024
- World Luxury Hotel Awards - Continent Win in Luxury Hotel Best Scenic Environment 2019
- Africa's Most Stunning View - Boutique Hotel Awards, 2018

### Lewa Safari Camp

- Gold Eco-rating Certification - Ecotourism Kenya, 2013 - 2024
- Condé Nast Traveller Readers' Choice Awards - #3 in Top 15 Resorts in East Africa, 2022
- Safari Awards Runner Up - Best Safari Cuisine, 2017

- Silver International Eco-rating Certification - Sustainable Travel International, 2016
- Certificate of Excellence - Tripadvisor, 2015/2016
- Best Community Safari Property in Africa - The Good Safari Guide, 2011
- Bronze Eco-rating Certification - Ecotourism Kenya, 2011/2012
- Condé Nast Traveller Readers' Travel Awards Top 20 - 2010 & 2011

## Sand River Masai Mara

- Gold Eco-rating Certification - Ecotourism Kenya, 2019 - 2024
- Condé Nast Traveller Readers' Choice Awards - #26 in 50 Best Resorts in the World and #7 in Top 25 Resorts in Africa, 2020
- Silver Eco-rating Certification - Ecotourism Kenya, 2018
- Bronze Eco-rating Certification - Ecotourism Kenya, 2016
- Certificate of Excellence - Tripadvisor, 2011 - 2016
- Nominated for Design Et Al. Award, 2014

## Loisaba Tented Camp

- Gold Eco-rating Certification - Ecotourism Kenya, 2018 - 2024
- Condé Nast Traveller Readers' Choice Awards - #15 in Top Resorts in Central & Eastern Africa, 2023
- Global Win: Luxury Tented Safari Camp - World Luxury Hotel Awards, 2018
- Nominated We Are Africa- Design Africa Award 2017
- Nominated We Are Africa- Rise Africa Award 2017
- Nominated for AHEAD 2017 awards in the Lodges and Tented Category
- Nominated PURE Award - Mindful Design, 2016
- Silver Eco-rating Certification - EcoTourism Kenya, 2016

## Loisaba Star Beds

- Silver Eco-rating Certification - EcoTourism Kenya, 2018 - 2024
- Safari Awards Runner Up - Best Community Focussed, Best Value Safari Property, Best Walking Safari, 2017

## Tortilis Camp

- Exceptional booking.com traveller review awards 2025
- Gold Eco-rating Certification - Ecotourism Kenya, 2015-2024
- Silver International Eco-rating Certification - Sustainable Travel International, 2016
- Eco Warrior Award for Best Eco-Rated Tented Camp - Ecotourism Kenya, 2015
- Silver Eco-Rating Certification - Ecotourism Kenya 2011/2012/2013/2014
- Tripadvisor's Hall of Fame 2015

- World's Best Awards Top 100 - Travel & Leisure Magazine, 2007-2014
- T&L 500 Best Hotels - Travel & Leisure Magazine, 2008-2014
- Virgin HIP Hotel - 2010 /2011 /2012 /2013
- Kenya Tourism Award - Best Small Lodge, 2012
- Finalist Best Eco Camp, Best Safari Cuisine & Best Guiding Team - The Good Safari Guide, 2011
- Nominated in World Travel Awards - Kenya's Leading Safari Lodge 2005 - 2013.
- Condé Nast Traveller Gold List 2008/2005
- Best for Service in Africa - Condé Nast Traveller Gold List, 2006
- British Airways 'Tourism for Tomorrow' Award, 1996
- Certificate Of Merit & Recognition' from Friends Of Conservation (Kenya)

## Arusha Coffee Lodge

- Travel + Leisure World Best Awards - 2024
- Condé Nast Traveller Readers' Choice Awards - #3 in Top 15 Resorts in Central & Eastern Africa, 2023
- Condé Nast Traveller Readers' Choice Awards - #1 in Top Resorts in Central & Eastern Africa, 2023
- Travel + Leisure's 500 Best Hotels (in the world) 2021
- Travel + Leisure - Voted in Top 5 Hotels in Africa 2020
- Sapling rating with Responsible Tourism Tanzania (RTTZ) for environment and community responsibility, 2018
- Certificate of Excellence - Tripadvisor, 2011 - 2016

## Serengeti Pioneer Camp

- Tripadvisor - Traveller's Choice 2021
- Condé Nast Traveller Readers' Choice Awards - #21 in Top 25 Resorts in Africa, 2020
- World Luxury Hotel Awards - Continent Win in Luxury Tented Safari Camp 2019
- Condé Nast Traveller Top 30 Resorts in Africa: Readers' Choice Awards 2019
- Seed level certified with Responsible Tourism Tanzania (RTTZ) for environment and community responsibility, 2019
- Safari Awards Winner - Best Safari House, 2017
- Safari Awards - Best Guiding Team, 2017
- Nominated in World Travel Awards - Tanzania's Leading Tented Safari Camp, 2016
- Certificate of Excellence - Tripadvisor, 2011 - 2016
- Safari Awards Highly Commended 2015/2016
- Nominated for Design et al. Award 2014

## Tarangire Treetops

- Condé Nast Traveller Readers' Choice Awards - #9 in Top 15 Resorts in East Africa, 2022
- Condé Nast Traveller Top 30 Resorts in Africa: Readers' Choice Awards 2019

- Seed level certified with Responsible Tourism Tanzania (RTTZ) for environment and community responsibility, 2019
- Certificate of Excellence - Tripadvisor, 2011 - 2016
- Safari Awards 3rd Place Finalist - Best Walking Safari 2015
- Top Guardian Safari Lodges 2013

### Serengeti Migration Camp

- Travel + Leisure World Best Awards - #19 spot amongst the Top 100 Hotels in the World, #3 amongst the Top 10 Best Africa Safari Lodges, 2023
- Condé Nast Traveller Readers' Choice Awards - #16 in Top 25 Resorts in Africa, 2020
- Seed level certified with Responsible Tourism Tanzania (RTTZ) for environment and community responsibility, 2019
- Certificate of Excellence - Tripadvisor, 2011 - 2016
- Conde Nast Traveller Readers Choice 2014
- Nominated in World Travel Awards- Tanzania's Leading Tented Safari Camp 2012
- Travel + Leisure Top 10 Hotels/Lodges in the World 2011

### The Manor At Ngorongoro

- Seed level certified with Responsible Tourism Tanzania (RTTZ) for environment and community responsibility, 2019
- Safari Awards Runner Up - Best Family Safari, 2017
- Safari Awards Highly Commended - Best Safari Spa/Retreat, 2017
- Safari Awards 3rd Place Finalist - Best Safari House, 2016
- Certificate of Excellence - Tripadvisor, 2011 - 2016
- Tripadvisor's Reviewers Choice 2014/2015

### Kilindi Zanzibar

- Condé Nast Traveller Readers' Choice Awards - #36 in the "Best 50" the Best Resorts in the World, 2022
- Condé Nast Traveller Readers' Choice Awards - #2 in Top 15 Resorts in East Africa, 2022
- Condé Nast Traveller Readers' Choice Awards - #19 in Top 25 Resorts in Africa, 2020
- Seed level certified with Responsible Tourism Tanzania (RTTZ) for environment and community responsibility, 2019
- Continent: Africa: Luxury Beach Villa - World Luxury Hotel Awards, 2018
- Safari Awards Runner Up- Best Marine Safari Experience, 2017
- Safari Awards Highly Commended - Best Design, Best Safari Spa/Retreat, Most Romantic Property, Best Safari Cuisine, 2017
- Safari Awards 3rd Place Finalist - Most Romantic Safari Property & Best Safari Spa/Retreat, 2016
- Safari Awards Winner - Most Romantic Safari Property in Tanzania 2015
- Certificate of Excellence - Tripadvisor, 2011 - 2016
- Safari Awards 3rd Place Finalist - Best Spa/Retreat in Tanzania 2015
- Safari Awards 3rd Place Finalist - Most Romantic Safari Property in Africa 2014
- Nominated for Design et al. Award 2014
- 7 Star Award for Kilindi 2013

# Weddings & Blessings

---

## WITH THE ELEWANA COLLECTION

Elewana properties have played host to many a special day for guests, from small intimate ceremonies, to several-day events for family and friends. Situated in some of the most stunning locations in East Africa, each Elewana property offers a spectacular back-drop to a special day.

### Elewana offers wedding packages which can include the following:

- On site organization of all requirements for the day.
- Special romantic lunch & sundowners, and dinner served in the bush, poolside or private verandah.
- Bouquets and floral decorations (indigenous). Professional florist rates are available on request.
- A wedding cake (sponge) made in camp. Professional wedding cake rates available on request.
- Special ceremony décor with indigenous plants, safari lamps, candles etc.
- Two bottles of sparkling wine.
- A gift from the lodge for the bride & groom
- Upgrade to Honeymoon Suite/Room subject to availability
- A traditional blessing by the Chief of the local tribe (Note - this is not a legal marriage, only a blessing)
- Local entertainment (Masai or Samburu dancers)
- Amateur photographer to take snap shots. Professional photographer rates available on request.

Please note that additional features and activities may be available depending on the host property.

All legal paperwork and booking of official ceremonial leader/registrar must be organized by the client's agents/ tour operator/ground handler should they wish the wedding to be a legal affair. Elewana properties will only host the wedding ceremony and party.

Prices for Elewana wedding packages are available on request. Please contact us on [info@elewana.com](mailto:info@elewana.com) for more information.

# Family & Multi-Generational Safaris

## WITH THE ELEWANA COLLECTION

What could be more exciting for a child than spotting their first leopard, learning how to throw a Masai spear, roasting marshmallows over a camp-fire to the calls of distant lions, or seeing brightly coloured fish through goggles?

A family safari in East Africa is a holiday to be remembered for life. All of our properties welcome and accommodate children by offering flexible dining times, children's menus and most importantly, children's activities to help them see the wonders of Africa. In this way we ensure that every member of a family group gets the most out of their safari. Our guides love nothing more than introducing children to the world that they love so much, showing them the animals but also imparting knowledge and a love of Africa which will stick with them for life. Our guides will ensure that children have fun, grow an appreciation of their surroundings and encourage them to become the next custodians of this fragile part of our planet.

*(Please note our property Kilindi Zanzibar is predominantly a couples-only hotel and has a minimum age policy of 16 years old. Family groups can be accommodated when the hotel is booked-out on exclusivity basis.)*

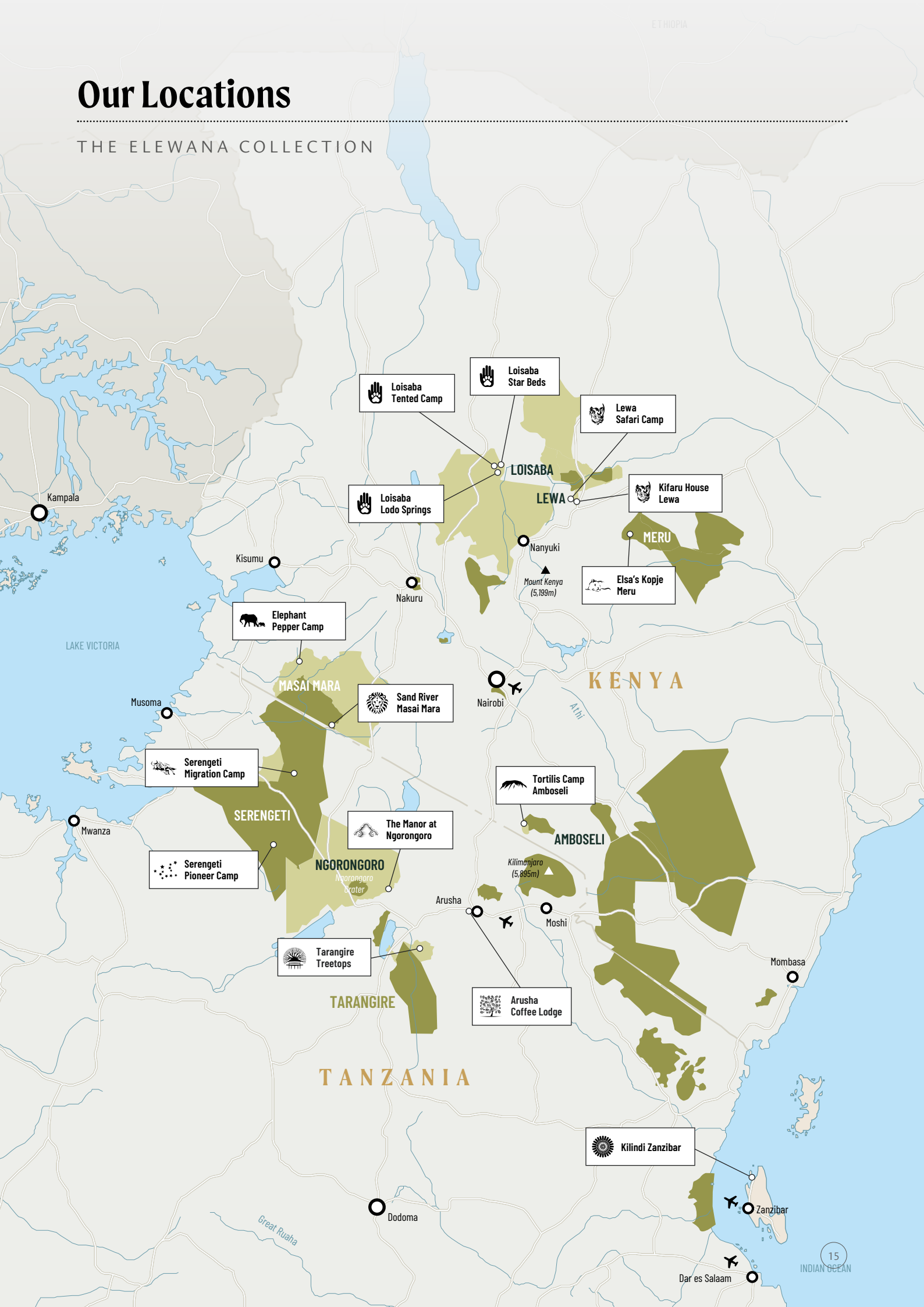
Property	Accommodations	Special Features
Tortilis Camp	1x Family Cottage (4pax) 1x Private House (5pax)	Shared private swimming pool and private dining.
Elsa's Kopje	1x Family Cottage (4pax) 1x Private House (4pax)	Private House has own swimming pool and private dining.
Kifaru House	1x Family Cottage (4 pax)	
Lewa Safari Camp	2x Family Tents (4pax)	
Loisaba Tented Camp	3x Family Combinations (4 pax)	One Family Combination and an ensuite tent have access to private pool.
Loisaba Star Beds	1x Family Room (4pax)	
Elephant Pepper Camp	2x Honeymoon tents which fit 2x extra beds. (4pax)	
Sand River Masai Mara	1x Family Tent (4pax)	
Arusha Coffee Lodge	3x Twin and 1x Double rooms have a couch that can sleep 2 children under 16yrs. (4pax)	
The Manor at Ngorongoro	1x Stable Cottage for families with 3 guest rooms (6 pax)	Games and TV room, and private dining.
Serengeti Pioneer Camp	1x Family safari tent (4 pax)	
Serengeti Migration Camp	4x Double/twin rooms have a sleeper couch and room for extra bed to sleep two children under 16yrs. (4 pax)	
Tarangire Treetops	2x Extra beds in a double or twin (4 pax)	

## Children's Activities By Camp

	Children's Menu	Swimming pool	Bush walks around camp	Masai/Samburu warrior & bush training	Visit to local school	Horse/pony riding	Fishing	Unique property activities
Tortilis Camp	✓	✓	✓	✓	✓			• Masai jewellery making
Elsa's Kopje	✓	✓	✓		✓		✓	• Walk up Mughwango Hill for children over 12 yrs.
Kifaru House	✓	✓	✓		✓	✓		• Visit to Lewa HQ to see the anti-poaching sniffer dogs in action. • Horse riding for older experienced riders • Camel riding for older children.
Lewa Safari Camp	✓	✓	✓		✓	✓		• Visit to Lewa HQ to see the anti-poaching sniffer dogs in action. • Camel riding for older children.
Loisaba Tented Camp	✓	✓	✓	✓	✓	✓	✓	• Mountain biking - for older children • Visit to HQ to see anti-poaching sniffer dogs in action.
Loisaba Star Beds	✓		✓	✓	✓	✓	✓	• Mountain biking - for older children • Visit to HQ to see anti-poaching sniffer dogs in action.
Loisaba Lodo Springs	✓	✓	✓	✓	✓	✓	✓	• Mountain biking - for older children • Visit to HQ to see anti-poaching sniffer dogs in action
Elephant Pepper Camp	✓		✓	✓	✓			• Roasting marshmallows around the campfire • Croquet • Board games available
Sand River Masai Mara	✓	✓	✓	✓	✓			• Games room with Scrabble, Monopoly, Chess, drawing, painting etc.
Arusha Coffee Lodge	✓	✓						• Playground, with jungle gym, slide and swings • Build your own pizza, and bake in the wood-fired oven • Kiddies coffee tour • Shanga tour with creative craft activities • Board games available upon request
The Manor at Ngorongoro	✓	✓	✓			✓		• Farm visits to see animals • Croquet • Lil Bee' massage treatments • Kiddies coffee tours • Kiddies movie nights • Strawberry and carrot picking from the veggie patch
Serengeti Pioneer Camp	✓	✓	✓	✓				• Safari Bingo - play bingo by spotting animals on a game drive and crossing them off on your bingo card.
Serengeti Migration Camp	✓	✓	✓					• Mask, card and jewellery making using feathers, seeds and beads. • Roasting marshmallows around the campfire.
Tarangire Treetops	✓	✓	✓	✓				• Roasting marshmallows around the campfire • Learn about the baobab tree, its African folklore, its importance in nature, and all the animals that live in it.

# Our Locations

THE ELEWANA COLLECTION

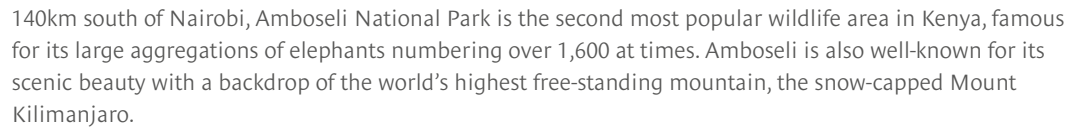


TANZANIA

KENYA



# AMBOSELI NATIONAL PARK



The figure consists of two maps. The main map on the left shows a large area of Kenya, with a white box highlighting the study area in the south. The inset map on the right provides a detailed view of this study area. It shows the Amboseli National Park, which is a large green area. To the north of the park is the Amboseli Airstrip, marked with a white cross. To the west of the airstrip is Tortilis Camp, marked with a black dot. The map also shows several other locations, including the Amboseli Airstrip, Tortilis Camp, and the Amboseli National Park. The map is labeled with various geographical features and locations, including the Amboseli National Park, Tortilis Camp, and the Amboseli Airstrip.

16



## Elewana Tortilis Camp

### Location

Kitirua Private Conservancy, bordering Amboseli National Park.

### Accommodation

- 16 spacious en suite tents ~ 9 doubles and 7 twin (32m<sup>2</sup>)
- 1 Private House ~ 2 en suite bedrooms (1 double and 1 triple) with a shared lounge and dining area (140m<sup>2</sup>)
- 1 Family Tent ~ 2 en suite bedrooms (1 double and 1 twin) with a shared verandah (82m<sup>2</sup>)
- Maximum Capacity ~ 49 guests

### Description

Tortilis Camp has a prime location for witnessing the majesty of Africa's highest mountain, Kilimanjaro.

Tortilis Camp is named after the flat-topped, umbrella thorn tree, the Acacia Tortilis, and embraces a hill in one of Amboseli's areas of Acacia Tortilis woodland. Located in a private conservancy bordering the national park, game drives, walks, sundowners and bush meals take place both inside the national park and in the conservancy, where guests enjoy exclusivity.

The tents are all spacious, with king or twin beds and elegant en suite bathrooms. There is a main lounge, bar and dining area, all exquisitely built with natural materials and thatched roofs, with magnificent views of Kilimanjaro. The Private House and Family Tent are located slightly separate to the main camp, upon the hill where they share a pool and enjoy magnificent views of Kilimanjaro.

Tortilis Camp was one of the first eco-lodges of its size, and is very proudly 100% solar. Guests can rest assured they are leaving a minimal footprint during their stay.

### Unique Selling Points

- **Unrivalled views of Mt. Kilimanjaro** ~ An elegant small lodge nestled on the side of Liimbarishi Hill with magnificent views across the plains to the highest free-standing mountain in the world.
- **Habituated elephant herds** ~ Amboseli is home to elephant families that have been closely followed and studied by world renowned researcher Cynthia Moss for over 40 years. Tortilis' guides know the elephant families and their histories intimately. These are some of the biggest elephants in Africa, as they have been protected for generations.

- **Private Amboseli** ~ Tortilis is set away from other lodges, on the unspoilt and quiet western boundary of the National Park, closest to the mountain. From the camp guests have full access to the famous Amboseli National Park, as well as exclusive access to 121 Km<sup>2</sup> of Kitirua private conservancy. In the Conservancy guests can enjoy game drives, walks and bush breakfasts and, with off-road driving permitted, the guides have the ability to create unparalleled photographic opportunities, as well as much more frequent and higher quality encounters with big game than in the National Park. Please note that the Kitirua Conservancy has strict restraints on the type of vehicles allowed into the Conservancy. Full Board guests are able to use their own vehicles within Amboseli National Park, however, to enter the conservancy, they will need to use a Elewana Tortilis Camp vehicle, which will be chargeable.
- **"Little Tortilis"** ~ Tortilis' luxurious "Private House" and "Family Tent" are located at the top of the hill, separate to the main tents, with views of the mountain and sharing a private infinity swimming pool.

### Activities

- Shared game drives in custom 4x4 vehicles (exclusive use available at a day rate)
- Evening game drives (pre-dinner)
- Guided bush walks (age restrictions apply to children under 16 yrs) All bush walks are subject to the discretion of the lead guide due to the nature of the activity
- Bush breakfasts and sundowners
- Cultural visits
- Swimming
- Massages, manicures and pedicures
- Visit to Cynthia Moss' Elephant Research base (additional cost)
- Visit to school supported by Land & Life Foundation
- Child-friendly activities

### Facilities Summary

- 24hr power
- In-room and bar charging facilities
- Credit card facilities
- Daily scheduled flights
- 4x4 custom game vehicles
- Wi-Fi internet throughout camp
- Spa
- Swimming pools (one private pool shared between Private House/Family Tent)

- Children's menu
- Laundry
- Gold Eco-rating with Eco-Tourism Kenya

### Open/Closed

Open all year round, minimum 2 night stay.

### How To Get There

Amboseli airstrip is 45 minute flight from Wilson Airport, and a 45 minute drive from the camp.

- Once daily scheduled Air Kenya flight departing Nairobi Wilson
- Once daily scheduled Safarilink flights departing Nairobi Wilson
- Once daily scheduled Mombasa Air flight departing Mombasa
- Once daily scheduled Mombasa Air flight departing the Masai Mara
- Private Charter from anywhere
- Tortilis Camp features on the Elewana SkySafari Kenya Classic itinerary

### Camp & Airstrip Co-Ordinates

Amboseli airstrip coordinates:

S02° 38'32" E37° 15'00"

Camp coordinates:

S 2°41'0.18" E 37°10'49.14"

### Electricity

- Tortilis Camp runs on 100% solar. There is one generator in place for emergency purposes
- All tents have power 24 hours a day for lighting and charging
- Batteries can be charged in the tents and at the bar
- All game viewing vehicles have inverters allowing battery charging whilst on game drives
- Tents run on a solar inverter system, which cannot support hair dryers. A hairdryer is available for use at the swimming pool changing area. Family Tent and Private House each have hair-dryers.
- Guests are recommended to bring converters and universal plug adaptors. The lodge uses UK square three pin plugs

### Water

Mineral water is provided free of charge from dispenser points. Mineral water provided during meals and in rooms. Guests are issued with a refillable bottle.

Bottled mineral water is also available free of charge.

### Meal Policy

- Individual dining. Meal times are flexible.
- Dining styles are as follows:
  - Breakfast: À la carte menu
  - Lunch: Buffet with live station
  - Dinner: Set menu

- Individual dietary requests can be satisfied with advance notice
- Picnic breakfasts and lunches available for game drives.
- Bush breakfasts with live station and sundowners.
- Select premium wine list.
- Please inform us about any dietary requirements or allergies prior to arrival.

### Amboseli Climate

Altitude: 4,000 ft.

Wet months: April, May & November.

Hot days, cool nights, low humidity

### Malaria

Dry areas higher than 4,000ft, including Tortilis

Camp, can be considered extremely low risk.

Tents are sealed against mosquitoes.

### Communication Services

Internet: Wi-Fi internet is available in all rooms and public areas.

Mobile phones: Phone signal is available, but limited to certain areas within camp.

### Children's Activities

- Swimming pool
- Guided camp "bush" walks - short walks looking at the trees, flowers, grasses, insects, birds and bird calls, mammals, tracks and droppings
- School visit - normal term times and extra cost
- Warrior training - learning how to make a fire, throw the Masai rungu and make and use a bow and arrow - additional cost.
- Jewellery making- learning how to make necklaces and bangles with local Masai villagers - additional cost
- Children's menu

### Special Features & Key Wildlife In The Area

- Tortilis has a unique location on the southern borders of Amboseli, and offers the most exceptional views of Kilimanjaro.
- Guests have the opportunity to meet and interact with the community to learn about the unique culture and traditions of the Masai people.
- The setting lies within the world's best elephant-viewing area, in the heart of Masai country. One can even make an exclusive visit to Cynthia Moss' Elephant Research base.
- Lion, cheetah, giraffe, hyena, wildebeest and many other species of plains game are plentiful.

# Meru National Park

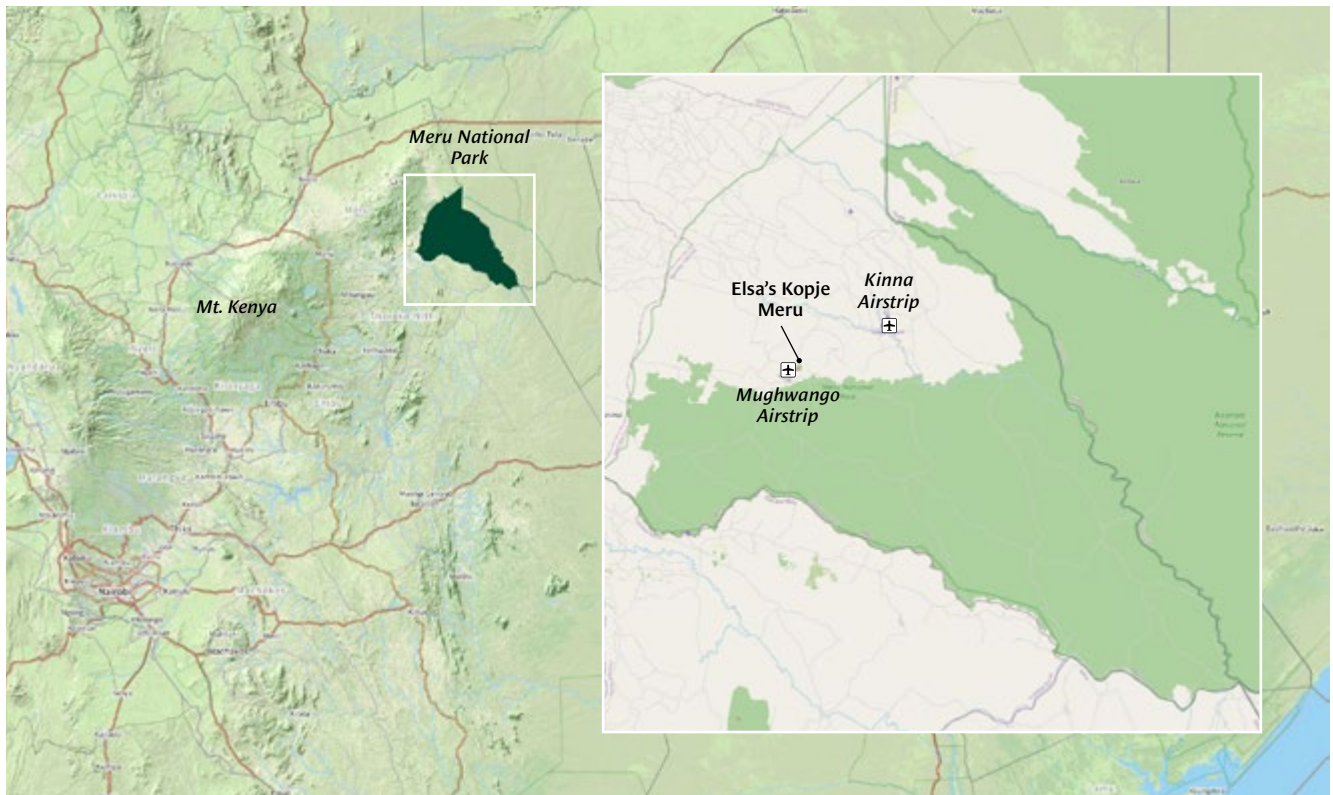
## MERU NATIONAL PARK



Meru National Park, wild and remote, traverses the Equator to the east of Mount Kenya and the Nyambeni Range. Meru forms part of a larger conservation area covering 1500 Km<sup>2</sup> including the adjoining Kora, Rahole and Bisanadi Reserves.

The park was brought to fame in the 1960s through Joy Adamson's best-selling book, *Born Free*, the true story about Elsa the lioness. A gem in the KWS portfolio, Meru National Park is a semi-arid park boasting 13 permanent rivers and springs, which meander through otherwise dry terrain, flanked by a rich vegetation of doum and raphia palms. The natural habitats of Meru are therefore incredibly diverse, varying from dense thickets and lush riverine forest, to wooded grasslands and open plains.

Meru's rich wildlife diversity includes rare species specific to Northern Kenya, such as Grevy's zebra, gerenuk, Somali ostrich, reticulated giraffe, as well as buffalo, elephant, hippo, lion, cheetah and leopard. Caracal, lesser kudu and greater kudu are all exceptional and rare species also found in Meru.



The park also incorporates an 84 Km<sup>2</sup> rhino sanctuary, making Meru one of the prime destinations to see rhinos in their natural habitat. The birdlife in Meru and Samburu is extraordinarily colourful and abundant with over 450 species of birds.

Elsa's Kopje's guests have virtually the entire park to themselves. Elsa's Kopje remains one of the most elegant lodges in Africa, with a truly exceptional setting on top of Mughwango Hill above George Adamson's original campsite, offering breath-taking 360° views of the surrounding volcanic plains.



# Elewana Elsa's Kopje

## Location

Mughwango Hill, Meru National Park

## Accommodation

- 6 spacious Cottages ~ 5 doubles and 1 twin, all en suite (average 70m<sup>2</sup>)
- 3 Honeymoon Cottages ~ 2 spacious en suite doubles with a private decks and outside baths; 1 large triple-level cottage with private sitting room, double en suite bedroom & a private deck (average 90m<sup>2</sup>)
- 1 Family Cottage ~ 2 en suite bedrooms, (1 double, 1 twin), sitting room, and a large private verandah (170m<sup>2</sup>)
- Private House ~ 1 double and 1 twin room (both en suite), shared sitting room, dining room, veranda and private pool (228m<sup>2</sup>)
- Maximum Capacity ~ 30 guests

## Description

Named after Elsa the lioness, made famous by George and Joy Adamson's biographical book and film Born Free, Elsa's Kopje remains one of the most elegant lodges in Africa, located in one of the most spectacular settings. Nestled into Mughwango Hill, the lodge enjoys panoramic views over the Meru plains from almost any point within the grounds. Every cottage offers the perfect 'room-with-a-view', uniquely designed and crafted to incorporate the natural features of the rocky hillside. An elegant and comfortable lounge and dining area, gorgeous infinity pool, and stunning sundowner viewpoint help make Elsa's Kopje the ultimate safari retreat.

Elsa's Private House is a spacious, stylish, exclusive hideaway set slightly apart from the main lodge. It has a large private living and dining area, leading seamlessly into a private garden and swimming pool.

## Unique Selling Points

- Rhino Sanctuary ~ Meru National Park incorporates an 84km<sup>2</sup> rhino sanctuary, home to over 70 white and 30 black rhinos, making Meru one of the best areas in Kenya to see rhinos in their natural habitat.
- The Adamson Story ~ The lodge is built overlooking the site of George Adamson's camp at the foot of the hill and the park was the playground of Elsa the lioness of Born Free fame. The lodge is full of memorabilia and images of George, Joy and their lions.
- Exclusive Meru Park Safari ~ With only a handful of camps and lodges in and around Meru, Elsa's guests have the

luxury of enjoying the Park almost entirely to themselves. The lodge has a special licence to walk, fish, and conduct night game drives (pre-dinner). The highest peak in Meru Park, Mughwango Hill enjoys 360° panoramas over the volcanic plains.

- Unique and Elegant Boutique Lodge~ The lodge is beautifully designed and furnished with elegant antiques and historical pictures. Elsa's Kopje boasts one of the most picturesque infinity pools, it's design incorporating the natural rocky features.
- Abundant Birdlife ~ For bird lovers, Meru offers spectacular bird watching opportunities, with over 450 species recorded in the park.

## Activities

- Shared game drives in custom 4x4 vehicles (exclusive use available at a day rate)
- Guided bush walks up Mughwango Hill (age restrictions apply to children under 16yrs) All bush walks are subject to the discretion of the lead guide due to the nature of the activity
- Bush meals and sundowners
- Fishing in the Tana or Rojewero rivers (catfish, tilapia and barbel)
- Visits to community projects and school supported by Land & Life Foundation
- Swimming
- Massage, manicures and pedicures
- Child-friendly activities

## Facilities Summary

- 24hr power
- In-room and lounge charging facilities
- Credit card facilities
- Daily scheduled flights
- Private airstrip
- 4x4 custom game vehicles
- Wi-Fi internet throughout the lodge
- Gift Shop
- Massage room
- Swimming Pools (one in private house)
- Children's Menu
- Laundry
- Gold Eco-rating with Eco-Tourism Kenya

## Open/Closed

Open all year round, minimum 2 night stay.

## How To Get There

Mughwango Airstrip (private airstrip) is a 5 min drive from the lodge; Kinna Airstrip is a 45 min drive from the lodge. Both are a 1hr flight from Wilson Airport.

- Once daily scheduled Air Kenya flight departing Nairobi Wilson to Kinna airstrip
- Private Charters from anywhere into Mughwango Airstrip
- A helicopter pad is a 1 minute drive from the lodge
- Road transfer in Elewana vehicle to/from any of Elewana's other Northern properties or Nanyuki (travel times between 3.5 and 8 hours)
- Elsa's Kopje features on the Elewana SkySafari Kenya Classic and Connoisseur itineraries.

## Lodge & Airstrip Coordinates

- Mughwango airstrip coordinates:  
N00°07.794' E038°08.022'
- Kinna airstrip coordinates:  
N00°09.905' E038°11.715'
- Lodge coordinates:  
N00°08.061' E038°08.232'

## Electricity

- Inverter battery system supported by solar panels and generator. Generator hours are 07h00 - 10h00 and 18h00 - 22h00
- 24 hr power in all rooms for lighting and charging electronics
- All game viewing vehicles fitted with inverters for battery charging on game drives
- Guests are recommended to bring converters and universal plug adaptors. The lodge uses UK square three pin plugs
- Hair-dryers not supported. During generator hours, guests can use a hairdryer located in the swimming pool changing room

## Water

Purified drinking water is provided free of charge. It is sourced, filtered and treated on site and available at dispenser points in main areas. Water is provided during meals and in rooms. Guests are issued with a refillable bottle.

Bottled mineral water is also available free of charge.

- Meal Policy
- Individual dining.
- Dining styles are as follows:
  - Breakfast: À la carte menu
  - Lunch: Buffet
  - Dinner: Set menu
- Individual dietary requests can be satisfied with advance notice

- Picnic breakfasts and lunches available for game drives.
  - Bush breakfasts with live station and sundowners.
  - Select premium wine list.
- Please inform us about any dietary requirements or allergies prior to arrival.

## Meru Climate

Altitude: 2,000 ft

Wet months: April, May & November

Hot days, warm nights, low humidity

## Malaria

Elsa's Kopje is located in a dry area of low population density, as such it has a very low malaria risk. Cottages are sealed with mesh screens and beds have mosquito nets.

## Communication Services

- Internet: Wi-Fi internet is available in all rooms and public areas.
- Mobile phones: Phone signal is available, although may be limited in some areas.

## Children's Activities

- Camp and Mughwango Hill bush walks with family friendly guides who are great with children (age restrictions for children under 16yrs for Mughwango Hill walks)
- Fishing
- Swimming pool (private house with own swimming pool)
- School visit - normal term times and at an extra cost
- Children's menu

## Special Features & Key Wildlife In The Area

- 84km<sup>2</sup> rhino sanctuary ~ despite there being over 100 rhinos in the sanctuary, the area is so large that you still need to game drive and search for your rhinos! The rhinos are successfully breeding and guests may be lucky to spot rhino calves.
- Meru's rich wildlife diversity includes rare species specific to northern Kenya, such as Grevy's zebra, gerenuk, lesser kudu, Somali ostrich, reticulated giraffe, Beisa Oryx; over 450 bird species, as well as buffalo, elephant, lion, leopard and cheetah. And, with 13 permanent rivers flowing through the Park, hippos and crocodiles are regularly seen too.
- Meru National Park is a place of spectacular and dramatic scenery, with its ancient granite kopjes and breathtaking views across to the Nyambeni Range and Mount Kenya beyond.



# Laikipia

## LOISABA CONSERVANCY



On the threshold of Kenya's beautiful northern rangelands, Laikipia covers 9,500km<sup>2</sup>, north of the Aberdares Mountain Range on a wide plateau stretching from the slopes of Mt Kenya in the south east to the edge of the Great Rift Valley in the west. The striking escarpments descend into the surrounding arid land with tributaries of the Ewaso Nyiro River cutting across the vast open plains. The habitats range from dry savannah and open woodland to spectacular canyons and low forested valleys.

Made up of vast community-owned ranches, private farms and wildlife conservancies, Laikipia supports the second highest density of wildlife in Kenya and is one of only few places in Africa where wildlife numbers are on the increase. It is one of Kenya's most exciting wilderness areas with spectacular scenery and an abundance of wildlife, including the Big 5 as well as many endangered species, such as Grevy's zebra, reticulated giraffe, Lelwel's hartebeest and the patas monkey. Laikipia is also one of the best places to see wild dog.



Loisaba Conservancy lies on the edge of a sheer escarpment with views out over the Laikipia plateau. This thriving 230 Km<sup>2</sup> conservancy boasts rivers, forests, springs, valleys and open plains. Recently purchased by the Loisaba Community Trust, with the assistance of The Nature Conservancy, and partnered with the Space For Giants elephant foundation, Loisaba is becoming a hub for cutting-edge conservation efforts throughout Laikipia and Kenya. Loisaba is fascinating on many levels - not just for its abundant game. Three accommodations are available on Loisaba - the sophisticated Loisaba Tented Camp, the unique Loisaba Star Beds, and the ultra-private Loisaba Lodo Springs.

## Elewana Loisaba Tented Camp

### Location

Loisaba Conservancy, Laikipia

### Accommodation

- 6 en suite tents, 3 doubles and 3 convertible twin/doubles (49m<sup>2</sup>)
- 3 Family Combinations, each with 1 double and 1 convertible twin/double en suite tents, and adjoined by a walkway (each tent 49m<sup>2</sup>)
- A Family Combination and 1 en suite tent have access to a private swimming pool.
- Maximum Capacity ~ 29 guests

### Description

Loisaba is a 230km<sup>2</sup> private wildlife conservancy, under the new ownership and management of the Loisaba Community Trust, and supported by The Nature Conservancy. A beautiful landscape with springs, plains, valleys and views, and the great Ewaso Nyiro River, it is an important elephant haven.

Perched on the edge of an escarpment, Loisaba Tented Camp is designed to capitalize on unhindered views across Laikipia's mottled landscape all the way to Mt Kenya. All accommodations and main areas enjoy a breathtaking vantage point over an expansive panorama.

African-themed sophistication and style is the flavour of Loisaba Tented Camp. Spacious and airy tents are custom-built with large floor-to-ceiling doors and windows, high ceilings and polished wood floors. The tent suites are adorned in chic Africana furniture with a modern European twist.

The inviting main areas of Loisaba Tented Camp include a large open dining area, separate open lounge and bar, a large wooden decking area for outside dining, relaxing and enjoying the view, and one of Africa's most picturesque infinity pools.

### Unique Selling Points

- Activities ~ Renowned for its beautiful landscape and rich wildlife, Loisaba also offers a multitude of activities to enjoy them by - horse riding, camel safaris, mountain biking, night game drives, fishing, visits to the conservation head quarters... the list goes on!
- Private and low density location ~ Loisaba is a 230Km<sup>2</sup> private game sanctuary, with limited accommodations on it. With 4.8km<sup>2</sup> of wilderness to each bed, Loisaba offers

some of the most exclusive safari experiences available in East Africa.

- Conservation ~ Loisaba's conservation model is a multilateral approach involving community, conservation organisations, tourism partners, agricultural and research institutions. Learn about the cutting-edge concepts being used to sustain the future of this stunning wilderness.

### Activities

- Shared day game drives in custom 4x4 vehicles (exclusive use available at a day rate)
- Night game drives
- Cultural visits to Samburu village
- Guided bush and bird walks. (age restrictions apply to children under 16 yrs) All bush walks are subject to the discretion of the lead guide due to the nature of the activity
- Bush breakfasts and sundowners
- Horse and camel safaris
- Gift shop
- Mountain biking
- Fishing (seasonal)
- Visits to conservancy head quarters and anti-poaching sniffer dogs

### Facilities Summary

- 24 hr power
- In-tent and reception charging facilities
- Credit card facilities
- Daily scheduled flights
- Private airstrip
- 4x4 custom game vehicles
- Wi-Fi internet throughout the camp
- Gift shop
- Swimming pools (main pool, and private pool for 3 tents)
- Children's menu
- Laundry
- Silver Eco-rating with Eco-Tourism Kenya

### Open/Closed

Open all year round, minimum 2 night stay.

## How To Get There

Loisaba airstrip is a 1hr flight from Wilson Airport and, a 15 minute drive from Loisaba Tented Camp

- Once daily scheduled Safarilink flight departing Nairobi Wilson
- Once daily schedule Air Kenya flight departing Nairobi Wilson
- Private charters from anywhere
- Road transfer in Elewana vehicle to/from any of Elewana's other Northern properties or Nanyuki (travel times between 3.5 and 8 hours)
- Loisaba Tented Camp features on the Elewana SkySafari Kenya Connoisseur itinerary

## Camp & Airstrip Coordinates

- Loisaba airstrip coordinates:  
N0°36'43.6" E36°48'03.2"
- Tented Camp coordinates:  
N0°36'25.4" E36°49'58.0"

## Electricity

- Electricity runs on 100% solar, with a generator in place for emergency.
- All tents have power 24 hours a day for lighting
- Guest batteries can be charged in the tents and at the bar
- All game viewing vehicles have inverters allowing battery charging whilst on game drives
- The system cannot support hair-dryers in tents. A hair dryer is available at the main area.
- Guests are recommended to bring converters & universal plug adaptors. The camp uses UK square three pin plugs.

## Meal Policy

- Individual dining. Meal times are flexible.
- Dining styles are as follows:  
Breakfast: À la carte menu  
Lunch: Buffet with live station  
Dinner: Set menu
- Individual dietary requests can be satisfied with advance notice
- Picnic breakfasts and lunches available for game drives.
- Bush breakfasts with live station and sundowners.
- Select premium wine list.
- Please inform us about any dietary requirements or allergies prior to arrival.

## Water

- Purified drinking water is provided free of charge. It is sourced, filtered and treated on site and available at dispenser points in main areas. Water is provided during meals and in rooms. Guests are issued with a refillable bottle.
- Bottled mineral water is also available free of charge.

## Laikipia Climate

Altitude: 5,500 - 6,000 ft

Wet months: April, May & November

Hot days, cool nights, low humidity

## Malaria

Areas higher than 4000 ft, including Loisaba, can be considered extremely low risk. Tents are sealed against mosquitoes at night.

## Communication Services

- Internet: Wi-Fi internet is available in all rooms and public areas.
- Mobile phones: Phone signal is available, but may be limited in some areas.

## Children's Activities

- Swimming pool
- Warrior training - Learning how to make a fire, throw a spear and make a bow & arrow
- Guided bush walks around camp
- Horse riding and camel riding for older experienced children
- Visit to sniffer dogs, with anti-poaching demonstration
- Mountain biking (over 12 years old)
- Visit to Samburu village
- Children's menu

## Special Features & Key Wildlife In The Area

- Laikipia has the second largest population of elephant in Kenya and Loisaba is an important breeding area and migration route for the Laikipia elephants.
- Greater kudu are abundant on the escarpment and valleys. Local wildlife includes also Grevy's Zebra and Beisa Oryx.
- The Nature Conservancy operates many conservation initiatives from Loisaba including research programs involving Space For Giants Elephant Foundation, the San Diego Zoo Global Reticulated Giraffe Research Program and Lion Landscapes. A visit to the Conservancy Head Quarters offers a wonderful opportunity to find out about the latest research and conservation concepts.



## Elewana Loisaba Star Beds

### Location

Loisaba Private Conservancy, Laikipia

### Accommodation

- 3 en suite double rooms (64m<sup>2</sup>)
- 1 family room with 2 double beds (100m<sup>2</sup>)
- All platforms have space for extra beds, but they do not roll out
- Maximum Capacity ~ 8 guests

### Description

Loisaba is a 230km<sup>2</sup> private wildlife conservancy, under the new ownership and management of the Loisaba Community Trust, and supported by The Nature Conservancy. A beautiful landscape with springs, plains, valleys and views, and the great Ewaso Nyiro River, it is an important elephant haven.

Poised on a rocky kopje, the Star Beds command sweeping views over an undulating valley and a permanent waterhole, frequented by resident wildlife.

Hand-crafted four-poster wooden beds sit on raised wooden platforms jutting out from a thatched-roof accommodation and are rolled out each night for guests to sleep under the endless African sky. Rustically designed to complement the surrounding environment, each star bed is individually built in harmony with the natural rocky features, incorporating a sitting area, and open plan bathroom with a view.

A team of traditional Samburu & Laikipiak Masai warriors welcome and host you with their customary warm African hospitality. A day of fun on Loisaba is rounded off with drinks by the log fire in the Star Beds lounge, sharing tall tales of the African bush, with the tale-telling continuing over a delicious shared dinner.

### Unique Selling Points

- Unique Accommodations ~ Star Beds offers the wonderful experience of sleeping under the endless African starry sky, undisturbed by light pollution.
- Activities ~ Renowned for its beautiful landscape and wildlife, Loisaba also offers a multitude of activities to enjoy it by - horse riding, camel safaris, mountain biking, night game drives, fishing, visits to the conservation head quarters... the list goes on!

- Private location ~ Loisaba is a 230Km<sup>2</sup> private game sanctuary, with limited accommodations on it. With 4.8km<sup>2</sup> of wilderness to each bed, Loisaba offers some of the most exclusive safari experiences available in East Africa.
- Conservation ~ Loisaba's conservation model is a multilateral approach involving community, conservation organisations, tourism partners, agricultural and research institutions. Learn about the cutting-edge concepts being used to sustain the future of this stunning wilderness.

### Activities

- Shared day game drives in custom 4x4 vehicles (exclusive use available at a day rate)
- Night game drives
- Cultural visits to Samburu village
- Guided bush walks (age restrictions apply to children under 16 yrs) All bush walks are subject to the discretion of the lead guide due to the nature of the activity
- Bush breakfasts and sundowners
- Horse and camel safaris
- Mountain biking
- Fishing (seasonal)
- Visits to conservancy head quarters and anti-poaching sniffer dogs

### Facilities Summary

- 24 hr power
- In-room and reception charging facilities
- Credit card facilities
- Daily scheduled flights
- Private airstrip
- 4x4 custom game vehicles
- Wi-Fi internet throughout the camp
- Children's menu
- Laundry
- Bronze Eco-rating with Eco-Tourism Kenya

### Open/Closed

Closed in April/May, minimum 2 night stay.

## How To Get There

Loisaba airstrip is a 1hr flight from Wilson Airport, and a 15 minute drive from Loisaba Star Beds.

- Once daily scheduled Safarilink flight departing Nairobi Wilson
- Once daily schedule Air Kenya flight departing Nairobi Wilson
- Private charters from anywhere
- Road transfer in Elewana vehicle to/from any of Elewana's other Northern properties or Nanyuki (travel times between 3.5 and 8 hours)

## Camp & Airstrip Coordinates

- Loisaba airstrip coordinates:  
0°36'43.6"N 36°48'03.2"E
- Loisaba Star Beds coordinates:  
0°37'54.8"N 36°50'45.5"E

## Electricity

- Electricity runs on 100% solar, with a generator in place for emergency.
- All tents have power 24 hours a day for lighting
- Guest batteries can be charged in the tents and in the main area
- All game viewing vehicles have inverters allowing battery charging whilst on game drives
- The system cannot support hair-dryers
- Guests are recommended to bring converters & universal plug adaptors. The camp uses UK square three pin plugs.

## Meal Policy

- Shared dining with other guests is encouraged. Private dinners can be arranged on request.
- The camp has a daily set menu, which can be tailored to individual requirements.
- Picnic breakfasts and lunches available for game drives.
- Bush breakfasts with live station and sundowners.
- Select premium wine list.
- Please inform us about any dietary requirements or allergies prior to arrival.

## Water

Purified drinking water is provided free of charge. It is sourced, filtered and treated on site and available at dispenser points in main areas. Water is provided during meals and in rooms. Guests are issued with a refillable bottle.

Bottled mineral water is also available free of charge.

## Laikipia Climate

Altitude: 5,500 - 6,000 ft

Wet months: April, May & November

Hot days, cool nights, low humidity

## Malaria

Areas higher than 4000 ft, including Loisaba, can be considered malaria free. Star Beds have mosquito nets.

## Communication Services

- Internet: Wi-Fi internet is available in all rooms and public areas.
- Mobile phones: Phone signal is available, but may be limited in some areas.

## Children's Activities

- Warrior training - Learning how to make a fire, throw a spear and make a bow & arrow
- Guided bush walks around camp
- Horse riding and camel riding for older experienced children
- Visit to sniffer dogs, with anti-poaching demonstration
- Mountain biking (over 12 years old)
- Visit to Samburu village
- Children's menu

## Special Features & Key Wildlife In The Area

- Loisaba Star Beds offers the amazing experience of sleeping under the open sky and stars, an exciting and real "back to nature" experience.
- Laikipia has the second largest population of elephant in Kenya and Loisaba is an important breeding area and migration route for the Laikipia elephants.
- Greater kudu are abundant on the escarpment and valleys. Local wildlife includes also Grevy's Zebra and Beisa Oryx.
- The Nature Conservancy operates many conservation initiatives from Loisaba including research programs involving Space For Giants Elephant Foundation, the San Diego Zoo Global Reticulated Giraffe Research Program and Lion Landscapes. A visit to the Conservancy Head Quarters offers a wonderful opportunity to find out about the latest research and conservation concepts.

## Elewana Loisaba Lodo Springs

### Location

Loisaba Private Conservancy, Laikipia

### Accommodation

- 8 en suite rooms ~ 1 Double / 7 convertible twin or double (84m<sup>2</sup>)
- Maximum Capacity ~ 20 guests

### Description

Located within the 230km<sup>2</sup> Loisaba Conservancy, Elewana Loisaba Lodo Springs offers an ultra-private experience with eight individual, spacious rooms with impressive views that reach across the magical landscape of northern Kenya stretching out to Mount Kenya. Service is paramount, with every room assigned an Elewana Guest Ambassador to serve and cater to every guests' need. Loisaba sits on a vital Elephant Corridor connecting the famous Laikipia Plateau and plays a key role in supporting one of Kenya's largest and most stable lion populations.

The Conservancy is also home to several critically endangered large Mammals, including Grevy's zebra, wild dog, leopard and cheetah.

### Unique Selling Points

- Activities ~ Renowned for its beautiful landscape and rich wildlife, Loisaba also offers a multitude of activities to enjoy them by - horse riding, camel safaris, mountain biking, night game drives, fishing, and visits to the conservation headquarters.
- Private and low density location ~ Loisaba is a 230Km<sup>2</sup> private game sanctuary, with limited accommodations on it. With 4.8km<sup>2</sup> of wilderness to each bed, Loisaba offers some of the most exclusive safari experiences available in East Africa.
- Conservation ~ Loisaba's conservation model is a multilateral approach involving community, conservation organisations, tourism partners, agricultural and research institutions. Learn about the cutting-edge concepts being used to sustain the future of this stunning wilderness.

### Activities

- Shared day game drives in custom 4x4 vehicles (exclusive use available at a day rate)
- Night game drives
- Cultural visits to Samburu village

- Guided bush and bird walks (age restrictions apply to children under 16 yrs) All bush walks are subject to the discretion of the lead guide due to the nature of the activity
- Bush breakfasts and sundowners
- Horse and camel safaris
- Mountain biking
- Fishing (seasonal)
- Visits to conservancy headquarters and anti-poaching sniffer dogs

### Facilities Summary

- 24 hr power
- In-room and reception charging facilities
- Credit card facilities
- Daily scheduled flights
- Private airstrip
- 4x4 custom built game vehicles
- Wi-Fi internet throughout the camp
- Gift shop
- Swimming pool
- Children's menu
- Laundry

### Open/Closed

- Open all year round, minimum 2 night stay.

### How To Get There

The Loisaba airstrip is a 1 hr flight from Wilson Airport and, a fifteen minute drive from Loisaba Lodo Springs

- Once daily scheduled Safarilink flight departing Nairobi Wilson
- Once daily schedule Air Kenya flight departing Nairobi Wilson
- Private charters from anywhere
- Road transfer in Elewana vehicle to/from any of Elewana's other Northern properties or Nanyuki (travel times between 2 and 6 hours)

### Camp & Airstrip Coordinates

- Loisaba airstrip coordinates:  
N0°36'43.6" E36°48'03.2"
- Loisaba Lodo Springs coordinates:  
N0°38'17" E36°49'09"

## Electricity

- Electricity runs on 100% solar, with a generator in place for emergency.
- All rooms have power 24 hours a day for lighting
- Guest batteries can be charged in the room and at the bar
- All game viewing vehicles have inverters allowing battery charging whilst on game drives
- The system cannot support hair-dryers in the room. A hair dryer is available at the main area.
- Guests are recommended to bring converters & universal plug adaptors. The camp uses UK square three pin plugs.

## Meal Policy

- Individual dining. Meal times are flexible.
- Dining styles are as follows:
  - Breakfast: À la carte menu
  - Lunch: Buffet with live station
  - Dinner: Set menu
- Individual dietary requests can be satisfied with advance notice
- Picnic breakfasts and lunches available for game drives.
- Bush breakfasts with live station and sundowners.
- Select premium wine list.

Please inform us about any dietary requirements or allergies prior to arrival.

## Water

Purified drinking water is provided free of charge. It is sourced, filtered and treated on site and available at dispenser points in main areas. Water is also provided during meals and in rooms. Guests are issued with a refillable bottle.

Bottled mineral water is also available free of charge.

## Laikipia Climate

Altitude: 5,500 - 6,000 ft

Wet months: April, May & November

Hot days, cool nights, low humidity

## Malaria

Areas higher than 4000 ft, including Loisaba, can be considered malaria free. Star Beds have mosquito nets.

## Communication Services

Internet: Wi-Fi internet is available in all rooms and public areas.

Mobile phones: Phone signal is available, but may be limited in some areas.

## Children's Activities

- Swimming pool
- Warrior training - Learning how to make a fire, throw a spear and make a bow & arrow
- Guided bush walks around camp

- Horse riding and camel riding for older experienced children
- Visit to sniffer dogs, with anti-poaching demonstration
- Mountain biking (over 12 years old)
- Visit to Samburu village
- Children's menu

## Special Features & Key Wildlife In The Area

- Laikipia has the second largest population of elephant in Kenya and Loisaba is an important breeding area and migration route for the Laikipia elephants.
- Greater kudu are abundant on the escarpment and valleys. Local wildlife includes also Grevy's Zebra and Beisa Oryx.
- The Nature Conservancy operates many conservation initiatives from Loisaba including research programs involving Space For Giants Elephant Foundation, the San Diego Zoo Global Reticulated Giraffe Research Program and Lion Landscapes. A visit to the Conservancy Head Quarters offers a wonderful opportunity to find out about the latest research and conservation concepts.

# Lewa Wildlife Conservancy

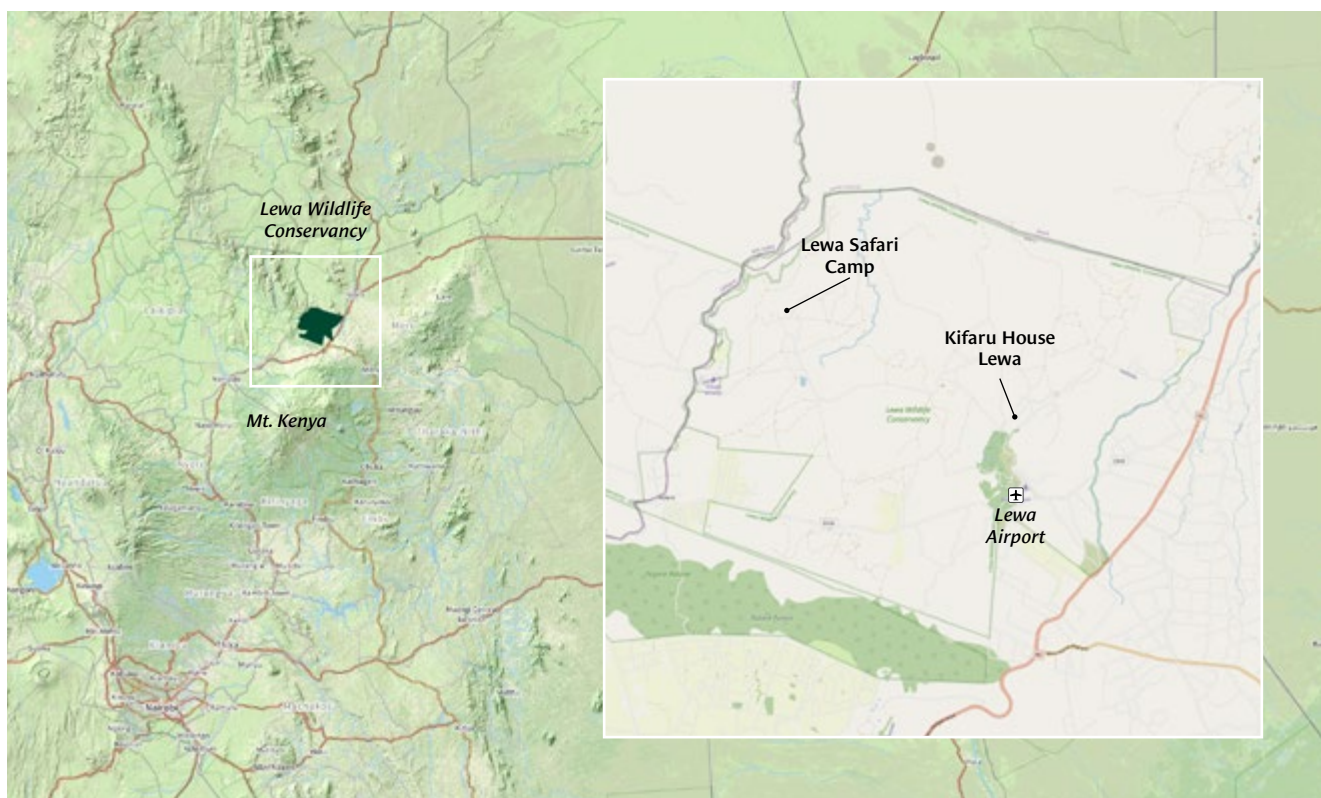
## LEWA WILDLIFE CONSERVANCY



Spanning 251 km<sup>2</sup>, the world famous Lewa Wildlife Conservancy supports over 440 bird species and more than 70 different mammals which roam the open grasslands at the foot of Mt Kenya.

Inscribed as a UNESCO World Heritage Site in 2013, Lewa Wildlife Conservancy has created a much emulated model of collaborative conservation involving multiple stakeholders, in particular the surrounding local communities. Originally a cattle ranch owned by the Craig family, Lewa welcomed its first rhino in 1984 and has since become renowned for its incredibly successful rhino conservation program. Its rhino population has grown steadily, not only restoring local numbers but enabling black rhino relocation and reintroduction in regions where they had long been absent. The conservancy currently holds over 10% of Kenya's black and 15% of Kenya's white rhino population as well as the largest single population of the critically-endangered Grevy's zebra in the world. With corridors open to the north, elephant, lion, leopard, cheetah and giraffe, to name but a few species, move freely in and out of this protected area and onwards to the greater Laikipia ecosystem. Huge herds of elephant migrate between the conservancy and the forests of Mt Kenya via a safe corridor created in 2010/2011.

Elewana Lewa Safari Camp and Elewana Kifaru House are both located in secluded areas within Kenya's most successful wildlife conservancy.





KIFARU HOUSE  
LEWA WILDLIFE CONSERVANCY

K E N Y A

## Elewana Kifaru House

### Location

Lewa Wildlife Conservancy

### Accommodation

- 5 Cottage suites ~ 4 double and 1 Family Cottage with 2 separate ensuite rooms.
- Maximum Capacity ~ 15 guests

### Description

This exquisitely created home hidden away within Kenya's most successful wildlife conservancy, Kifaru House is an enchanting, private haven in which to relax and spend time at leisure. With its stunning location looking out towards Mount Kenya in the south and the arid lowlands to the north, Kifaru House also offers outstanding game viewing.

With just five charming thatched cottages, all with well-appointed bedrooms, with sumptuous four-poster beds and generous en-suite bathrooms, the property luxuriates in total exclusivity. The cottages are surrounded by an oasis of vibrant lawns filled with birdsong and spectacular views of the plains below.

The main area and sunny breakfast spot overlook a waterhole full of activity and wildlife, and with an excellent library and log fires in the lounge and dining rooms, guests can truly sink into delicious cosy comfort during the cool evenings.

### Unique Selling Points

- Lewa Wildlife Conservancy ~ A world renowned wildlife conservancy, a UNESCO World Heritage Site and a leading rhino and community-based conservancy.
- Exceptional game viewing ~ Lewa is home to over 10% cent of Kenya's black rhino population and approximately 15% of the country's white rhinos as well as the single largest population in the world of the critically endangered Grevy's zebra. In addition, Lewa hosts an abundance of other species including the Big 5.
- Safari Activities ~ Rich variety of exciting safari activities alongside exceptional game drives. These include walking safaris, horse and camel riding, tribal village visits, day trips to Ngare Ndare forest, visits to the conservancy HQ interacting with the anti-poaching sniffer dogs and guided visits to an archaeological site which is rich in tools used by prehistoric man.

### Activities

- Shared game drives in 4x4 vehicles (exclusive use available at a day rate)
- Evening game drives (pre-dinner)
- Night game drives
- Guided bush walks (age restrictions apply to children under 16yrs). All bush walks are subject to the discretion of the lead guide due to the nature of the activity
- Bush meals and sundowners
- Heated Swimming pool
- Child-friendly activities

### Optional Extra Activities

- \*Activities subject to third party fees and availability.
- Horse-riding (experienced riders)
- Camel-riding
- Visits to Conservancy HQ to learn about the running of the conservancy
- See the Anti-Poaching Tracker Dogs in action
- Visits to community villages and schools
- Day trips to Ngare Ndare forest, where you can swim in the clear blue waters of the springs, walk the canopy bridge through the forest and enjoy a picnic lunch

### Facilities Summary

- 24hr power
- In-room charging facilities
- Daily scheduled flights
- 4x4 custom game vehicles
- Wi-Fi Internet in the main house and cottages
- Fully stocked Mini bar
- Heated Infinity Swimming Pool
- Children's Menu
- Laundry
- A music System
- A helipad

### Open/Closed

Open all year round, minimum 2 night stay.



## How To Get There

Lewa Main Airstrip is a 45 Minute flight from Wilson Airport, and a 15 minute drive from camp

- Once daily scheduled Air Kenya flight departing Nairobi Wilson
- Once daily scheduled Safarilink flight departing Nairobi Wilson
- Private Charters from anywhere
- Note - Lewa Conservancy has very strict vehicle rules and only authorized vehicles are allowed within the Conservancy. Visitors arriving by road have to be collected from the Conservancy headquarters
- Road transfer in Elewana vehicle to/from any of Elewana's other Northern properties or Nanyuki (travel times between 2 and 5 hours)

## Lodge & Airstrip Coordinates

- Lewa Wildlife Conservancy Airstrip coordinates:  
N0° 11' 51" E37° 27' 51"
- Lodge coordinates:  
0°13'21.9"N 37°27'53.4"E

## Electricity

- Solar inverter batteries and a generator.
- All Cottages have 24hr power for lighting and charging electronics
- Hair-dryers are provided
- Guests are recommended to bring converters and plug adaptors. The lodge uses UK square three pins plugs

## Water

Purified drinking water is provided free of charge. It is sourced, filtered and treated on site and available at dispenser points in main areas. Water is provided during meals and in rooms. Guests are issued with a refillable bottle.

Bottled mineral water is also available free of charge.

## Meal Policy

- Communal dining. Meal times are flexible.
- Dining styles are as follows:
  - Breakfast: À la carte menu
  - Lunch: Buffet with live station
  - Dinner: Set menu
- Individual dietary requests can be satisfied with advance notice
- Picnic breakfasts and lunches available for game drives.
- Select premium wine list.
- Please inform us about any dietary requirements or allergies prior to arrival.

## Lewa Climate

Altitude: 5'500ft

Wet months: April, May & November.

Warm days, chilly nights, no humidity

## Malaria

Low populated environments at altitudes higher than 4,000ft, including Elewana Kifaru House, can be considered malaria free. All beds have mosquito nets

## Communication Services

Internet: Wi-Fi internet is available in all rooms and public areas.

Mobile phones: Phone signal is available, although may be limited in some areas.

## Children's Activities

- Heated swimming pool
- Guided camp "bush" walk - short walk looking at the trees, flowers, grasses, insects, birds and bird calls, mammals, tracks and droppings
- Visit to Lewa HQ to see the sniffer dogs
- School visit - normal term times and extra cost
- Horse riding for older experienced riders
- Camel riding for older children
- Children's menu

## Special Features & Key Wildlife In The Area

- Lewa holds over 10% of Kenya's black rhino population and about 15% of Kenya's white rhino population. Over 40% of the full time employees on Lewa are rangers who undertake daily patrols around the reserve, monitoring the wildlife, specifically the rhinos.
- It holds the largest single population of critically-endangered Grevy's zebra.
- As well as being renowned for its rhinos and Grevy's zebra, Lewa hosts an abundance of other species, including elephant, lion, cheetah, leopard and buffalo.
- There is an archaeological site on Lewa, which is rich in tools used by prehistoric man. It is thought the site was an "artisan's shop", where the tools were made, as there are so many that a site for domestic use is unlikely. The Museums of Kenya (where the pre-history department was made famous by the Leakey family), have shared their findings of the site with the guides on Lewa.

# Elewana Lewa Safari Camp

## Location

Lewa Wildlife Conservancy

## Accommodation

- 11 en suite safari tents ~ 8 double/twins and 3 triples (average 27m<sup>2</sup>)
- 2 family safari tented suites ~ each suite consists of two en suite safari tents with a shared veranda (64m<sup>2</sup> & 66m<sup>2</sup>)
- Maximum Capacity ~ 37 guests

## Description

Lewa Safari Camp has a stunning location within the UNESCO World Heritage Site of Lewa Wildlife Conservancy, with outstanding game viewing from camp, and views of Mt. Kenya to the south and the arid lowlands to the north. Each tent has a thatched roof, veranda and full en suite bathroom, very much in the 'Lewa' style. The central areas have vibrant gardens filled with birds, a sunny veranda and swimming pool to enjoy during the day, and cosy log fires in the lounge and dining room during the chilly evenings.

The camp is based within the private 251km<sup>2</sup> wildlife conservancy, home to over 10% of Kenya's black rhino population, and the single largest population of Grevy's zebra in the world. Lewa reinvests all the profits generated from tourism into its core programs. When you visit Lewa Safari Camp, you contribute to helping thousands of people from different backgrounds and cultures to improve their lives and give their children a future, at the same time as ensuring Africa's wildlife has a stable home.

## Unique Selling Points

- Lewa Wildlife Conservancy ~ A world renowned wildlife conservancy, a UNESCO World Heritage Site and a cutting-edge rhino and community-based conservancy.
- Safari Activities ~ Variety of unique and exciting safari activities alongside excellent game drives. These include horse and camel riding, village visits, day trips to Ngare Ndare forest, visits to the conservancy HQ and interacting with the anti-poaching sniffer dogs.
- Wildlife, specifically black rhinos ~ Lewa is home to over 105 endangered black rhinos and over 99 white rhinos, and the world's largest population of the endangered Grevy's zebra.
- Homely & welcoming ~ Lewa Safari Camp was completely refurbished and upgraded in 2013. Lewa Safari Camp offers guests the perfect homely informal environment to relax and unwind, be it with a glass of your favourite tippie in front of the log fire at night or - when not out and about

during the day - in the vibrant gardens filled with birds, swimming in the pool or reading a book on the verandah.

## Camp Activities

- Shared game drives in 4x4 vehicles (exclusive use available at a day rate)
- Evening game drives (pre-dinner)
- Guided bush walks (age restrictions apply to children under 16yrs). All bush walks are subject to the discretion of the lead guide due to the nature of the activity
- Bush meals and sundowners
- Camp animal hide - to sit and watch animals coming close to camp
- Swimming pool
- Massages, manicures and pedicures
- Child-friendly activities

## Optional Extra Activities

\*Activities subject to third party fees and availability.

- Horse-riding (experienced riders)
- Camel-riding
- Visits to Conservancy HQ to learn about the running of the conservancy
- See the Anti-Poaching Tracker Dogs in action
- Visits to community villages and schools
- Day trips to Ngare Ndare forest, where you can swim in the clear blue waters of the springs, walk the canopy bridge through the forest and enjoy a picnic lunch

## Facilities Summary

- 24hr power
- In-tent charging facilities
- Credit card facilities
- Daily scheduled flights
- 4x4 custom game vehicles
- Wi-Fi internet throughout the camp
- Gift Shop
- Massage and Spa
- Swimming Pool
- Children's Menu
- Laundry
- Gold Eco-rating with Eco-Tourism Kenya



## Open/Closed

Open all year round, minimum 2 night stay.

## How To Get There

Lewa Main Airstrip is a 1hr flight from Wilson Airport, and a 40 minute drive from camp

- Once daily scheduled Air Kenya flight departing Nairobi Wilson
- Once daily scheduled Safarilink flight departing Nairobi Wilson
- Private Charters from anywhere
- Note - Lewa Conservancy has very strict vehicle rules and only authorised vehicles are allowed within the Conservancy. Visitors arriving by road have to be collected from the Conservancy headquarters
- Road transfer in Elewana vehicle to/from any of Elewana's other Northern properties or Nanyuki (travel times between 2 and 5 hours)

## Camp & Airstrip Coordinates

- Lewa Downs Airstrip coordinates:  
N0° 11' 51" E37° 27' 51"
- Camp coordinates:  
N0° 15' 06" E37° 23' 14"

## Electricity

- Solar inverter batteries and a generator. Generator hours are from 06h00-09h00, 14h00-15h00 and 18h30-22h00
- All tents have 24hr power for lighting and charging electronics
- Guest batteries can be charged in the tents (one socket) and in the office
- All game vehicles fitted with inverters for battery charging on game drives
- All tents run on a solar inverter system, which cannot support hair dryers. A hairdryer is available in the reception for use during generator hours.
- Guests are recommended to bring converters and plug adaptors. Camp use UK square three pins plugs

## Water

Purified drinking water is provided free of charge. It is sourced, filtered and treated on site and available at dispenser points in main areas. Water is provided during meals and in rooms. Guests are issued with a refillable bottle.

Bottled mineral water is also available free of charge.

## Meal Policy

- Individual dining. Meal times are flexible.
- Dining styles are as follows:  
Breakfast: À la carte menu  
Lunch: Buffet with live station  
Dinner: Set menu
- Individual dietary requests can be satisfied with advance notice

- Picnic breakfasts and lunches available for game drives.
- Bush breakfasts with live station and sundowners.
- Select premium wine list.
- Please inform us about any dietary requirements or allergies prior to arrival.

## Lewa Climate

Altitude: 5'500ft

Wet months: April, May & November.

Warm days, chilly nights, no humidity

## Malaria

Low populated environments at altitudes higher than 4,000 ft., including Lewa Safari Camp, can be considered malaria free. Tents are sealed against mosquitoes at night.

## Communication Services

Internet: Wi-Fi internet is available in all rooms and public areas.

Mobile phones: Phone signal is available, although may be limited in some areas.

## Children's Activities

- Swimming pool
- Guided camp "bush" walk - short walk looking at the trees, flowers, grasses, insects, birds and bird calls, mammals, tracks and droppings
- Visit to Lewa HQ to see the sniffer dogs
- School visit - normal term times and extra cost
- Horse riding for older experienced riders
- Camel riding for older children
- Children's menu

## Special Features & Key Wildlife In The Area

- Lewa holds over 10% of Kenya's black rhino population and about 15% of Kenya's white rhino population. Over 40% of the full time employees on Lewa are rangers who undertake daily patrols around the reserve, monitoring the wildlife, specifically the rhinos.
- It holds the largest single population of critically-endangered Grevy's zebra.
- As well as being renowned for its rhinos and Grevy's zebra, Lewa hosts an abundance of other species, including elephant, lion, cheetah, leopard and buffalo.
- There is an archaeological site on Lewa, which is rich in tools used by prehistoric man. It is thought the site was an "artisan's shop", where the tools were made, as there are so many that a site for domestic use is unlikely. The Museums of Kenya (where the pre-history department was made famous by the Leakey family), have shared their findings of the site with the guides on Lewa.

# The Masai Mara

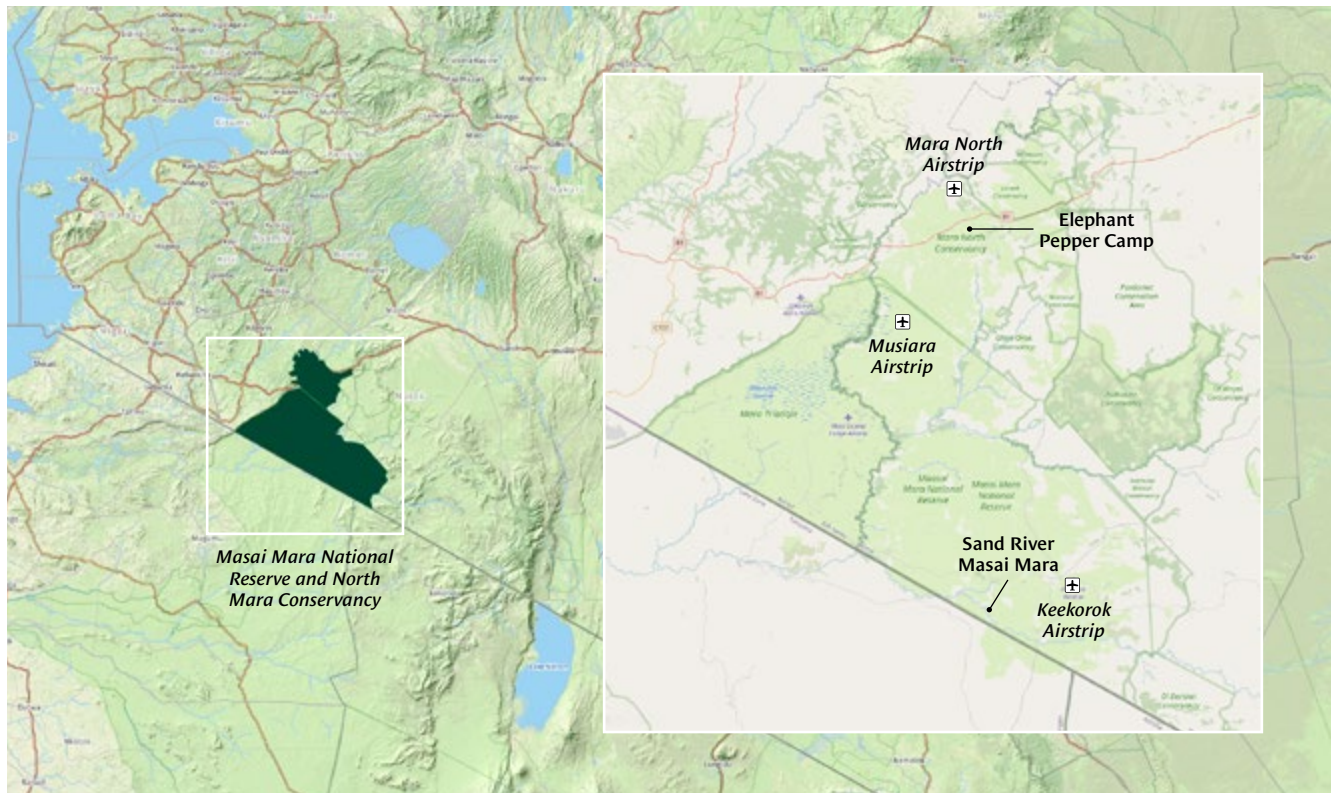
## MASAI MARA NATIONAL RESERVE



The Masai Mara, in the southwest of Kenya, is famous for its astounding variety of wildlife. With both resident and transient populations of lion, leopard, cheetah, hyena, giraffe and elephant, to name a few, as well as over 500 bird species, the vast fertile plains are dense with game.

The area has been classified among the “Seven Wonders of the World” due to the extraordinary annual migration from July to November when over 1.3 million wildebeest and zebra cross between the Serengeti to the Masai Mara in search of greener pastures.

The Masai Mara National Reserve itself, measuring 1510 Km<sup>2</sup>, is part of the Greater Mara-Serengeti Ecosystem, much of which falls under ownership of Masai pastoralist communities. Some of the ecosystem’s prime game viewing lies within the conservation areas surrounding the Reserve. These conservancies have been set up by the private sector in partnership with local Masai landowners to conserve the larger Masai Mara ecosystem by extending the protection area for wildlife and standardizing income distribution and eco-system management.



Elephant Pepper Camp was fundamental in founding the 283 Km<sup>2</sup> Mara North Conservancy (MNC), one of the largest community and private sector managed conservancies in the world. Regarded as one of Kenya’s most successful conservation models, Mara North Conservancy is an exclusive safari destination in a prime wildlife area. Elephant Pepper Camp is a small and exclusive camp, located away from other lodges, in the heart of the Mara North Conservancy.

Sand River Masai Mara has a quiet, secluded and private location in the southern area of the Masai Mara National Reserve, bordering the Serengeti National Park. Directly positioned on the annual wildebeest and zebra migration route, the camp is in the heart of the migration during the season. The Sand River, from which the camp gets its name, is a small rocky river flowing past the camp, offering serene views from every tent.

## Elewana Elephant Pepper Camp

### Location

Mara North Conservancy, within Masai Mara.

### Accommodation

- 8 en suite tents ~ 4 doubles and 4 twin tents (all tents can be made into doubles or twins and can each fit one extra bed - 40m<sup>2</sup>)
- 2 Honeymoon Tents ~ spacious en suite tents, which can comfortably fit two extra beds (100m<sup>2</sup>)
- Maximum Capacity ~ 24 guests

### Description

Elephant Pepper Camp is one of Kenya's original, very small and exclusive tented camps, located away from other lodges in the pristine Mara North Conservancy. For those wanting to step off the world for a while and lose themselves in unspoilt nature in the heart of the Kenyan bush, Elephant Pepper Camp is the perfect place to indulge this whim and to explore the marvels of the natural world.

Nestled in a lush thicket of Elephant Pepper trees overlooking open grasslands frequented by herds of game, Elephant Pepper Camp maintains a rustic luxury and authenticity of a traditional safari from yesteryear. Spacious canvas tents are elegantly furnished with Raj campaign furniture, and enjoy comfortable en suite bathrooms.

Nothing rivals sitting around the campfire listening to the sounds of the African night. Enjoying extended game drives with our highly knowledgeable and qualified guides, guests participate in the most unique wildlife experience in the world. Elephant Pepper Camp brings people to the heart of the wilderness - no traffic, no permanent structures, just the sights and sounds of the African bush.

### Unique Selling Points

- Taste of elegant safari from years gone by ~ Although extremely comfortable with spacious tents, en suite bathrooms, gourmet food and elegant furnishings, the camp is very low key and 100% solar. The camp managers join guests at the dinner table and campfire, sharing their stories and knowledge of the bush, reminiscent of a bygone safari era.
- Private Masai Mara ~ Mara North Conservancy (MNC) is a privately managed conservancy in the core of the Masai Mara. Game driving is restricted to those vehicles belonging to lodges within the Conservancy, so Elephant Pepper guests have this outstanding part of the Masai Mara, almost to themselves. Within Mara North

Conservancy is Leopard Gorge, famed for being the home of several feline characters from BBC's Big Cat Diaries.

- Children get back to nature ~ From fiercely contested croquet matches in the lazy afternoons, to walks identifying tracks, to learning to use a handmade bow and arrow - Elephant Pepper Camp offers good old-fashioned exploratory fun.
- Migration ~ Although tucked away in a private conservancy away from the crowds, guests to Elephant Pepper Camp still have access to the excitement of the Migration and its river crossings by spending a day in the reserve with a picnic lunch.

### Activities

- Shared game drives in custom 4x4 vehicles (exclusive use available at a day rate)
- Pre dinner drinks around the open camp fire
- Night game drives
- Sundowners
- Bush breakfasts
- Guided bush walks (age restrictions apply to children under 16yrs) All bush walks are subject to the discretion of the lead guide due to the nature of the activity
- Balloon Safaris (price not included and pre-booking required)
- Visit to school supported by Land & Life Foundation
- Children's activities

### Facilities Summary

- 24hr power
- Charging facilities in main areas and tents
- Credit card facilities
- Daily scheduled flights
- 4x4 custom game vehicles
- Wi-Fi internet in main areas
- Gift shop
- Children's menu
- Laundry
- Gold Eco-rating with Eco-Tourism Kenya

### Open/Closed

Closed in April/May, minimum 2 night stay.

## How To Get There

Mara North Airstrip is a 30 minute drive from camp. Musiara airstrip is a 1 hour drive from camp. Both are a 45 min flight from Wilson airport.

- Twice daily scheduled Safarilink flight departing Nairobi Wilson
- Once daily scheduled Safarilink flight from Shaba/Samburu via Lewa and Nanyuki
- Three times daily in high season and twice daily in low season Air Kenya flight departing Nairobi Wilson
- Once daily scheduled Air Kenya flight from Meru via Lewa and Nanyuki
- Once daily scheduled Mombasa Air flight from Mombasa, via Ukunda and Amboseli
- Once daily scheduled Blue Sky flight from Mombasa via Ukunda
- Private charters from anywhere
- Note - only authorised vehicles are allowed to conduct game drives within MNC

## Camp & Airstrip Coordinates

- Mara North Airstrip coordinates:  
S1° 08' 31" E35° 08' 23"
- Camp coordinates:  
S1° 12' 5.49" E35° 8' 12.66"

## Electricity

- Elephant Pepper Camp runs fully on solar power
- All tents have solar LED lighting 24 hours a day
- Charging facilities are available in the main area of the camp and all tents.
- All game viewing vehicles have inverters allowing battery charging whilst on game drives
- Low powered hair dryer available on request
- A back up generator on cloudy days to boost our solar

## Water

Mineral water is provided free of charge from dispenser points around camp. Mineral water provided during meals and in rooms. Guests are issued with a refillable bottle.

## Meal Policy

- Shared dining with other guests is encouraged. Private dinners arranged on request.
- The camp has a daily set menu, which can be tailored to individual requirements.
- Picnic breakfasts and lunches available for game drives.
- Bush breakfasts with live station and sundowners.
- Select premium wine list.
- Please inform us about any dietary requirements or allergies prior to arrival.

## Masai Mara Climate

Altitude: 5,500 ~ 6,400 feet

Rainfall: Approximately 760mm per year

Warm, dry days & cool nights, no humidity

## Malaria

Areas higher than approximately 4,000ft, including Elephant Pepper Camp, can be considered very low-risk for malaria. All tents are sealed against mosquitoes at night.

## Communication Services

Internet: Wi-Fi internet is available in main areas.

Mobile phones: Phone signal is available, but may be limited in some areas.

## Children's Activities

- Guided camp "bush" walk - short walks looking at the trees, flowers, grasses, insects, birds and bird calls, mammals, tracks and droppings
- Warrior training - Learning how to make a fire, throw the Masai rungu, and use a bow and arrow
- School visit
- Roasting marshmallows around the camp fire
- Croquet
- Children's menu

## Special Features & Key Wildlife In The Area

- Elephant Pepper Camp is in the heart of the Masai Mara prime game viewing area. It is only half an hour leisurely game drive from the Mara River migration crossing, although most game viewing is conducted in the Mara North Conservancy core, right around camp.
- The grass around the camp is very high in salts, especially near the honeymoon tent where there are natural springs in the wetter times, so this attracts a lot of elephant that are free to roam around the camp at night time.
- The camp overlooks the vast open plains, teeming with game, especially during the migration.
- Here you experience the bush as one should: it is a personal experience with a very homely atmosphere, where we all eat together and share the beauty of the surroundings while relaxing around the campfire.



**SAND RIVER**  
MASAI MARA

\*\*\*\*\*  
K E N Y A

## Elewana Sand River Masai Mara

### Location

Masai Mara National Reserve

### Accommodation

- 15 tented rooms ~ 4 twins, 11 doubles (49m<sup>2</sup>)
- 1 Family tent with 2 en suite bedrooms adjoined by a central lounge area (87m<sup>2</sup>)
- Sand River is separated into two separate camp areas of 10 and 6 tents to make Sand River and "Little" Sand River.
- Each "camp" has its own main and dining areas.
- 4 of the tents contain day beds that can be used as extra beds.
- Maximum Capacity ~ 40 guests

### Description

Situated on a secluded and picturesque site on the banks of the splendid Sand River, Sand River Masai Mara is built in the elegant style reminiscent of late 1920's safaris. These were the glory days of great safaris, patronised by the rich, the beautiful and the famous. Here at Sand River Masai Mara guests can sink back in time and savour the same glamorous ambience, unspoilt scenery and spectacular game viewing as the Hollywood stars, royalty and celebrities of that classic era of African adventure.

Sand River Camp sits on the migration route of the immense herds that trek between the Serengeti and Masai Mara every year following the rains to greener pastures. During this time, guests literally become part of the wildlife drama being played out, as sprawling lines of wildebeest cross the Sand River and weave their way right through the camp. Often from the privacy and comfort of your verandah you can steep yourself in this wildlife spectacle and feel a part of this natural phenomenon.

Comprising of 16 tented accommodations, Sand River Masai Mara replicates the heyday of exclusive permanent tented camps of the late 1920's.

Divided into two separate but adjoining camp-sites of 10 and 6 tents, each area possessing its own designated dining and public areas, Sand River Masai Mara provides an atmosphere of exclusivity and classic opulence.

### Unique Selling Points

- Private Location ~ The camp is located in a secluded area of the Masai Mara National Reserve, far from other properties so guests enjoy a truly "exclusive" safari.
- Sand River ~ The camp overlooks Sand River, a picturesque combination of sand banks, dramatic rocks and riverine forest - an idyllic setting for a late breakfast!
- On the Migration route ~ Sand River Masai Mara is quite literally on the Migration route and guests are often fortunate to be able to watch wildebeest and zebra crossing the Sand River from the comfort of their tent verandah.
- Luxurious classic camp ~ The camp has an opulent feel, and evokes a feeling of having stepped back in time to the heyday of great safaris.

### Activities

- Shared game drives in custom 4x4 vehicles (exclusive use available at day rate)
- Bush meals and sundowners
- Swimming pool
- Visit to a local school supported by Land & Life Foundation
- Balloon safaris (price not included and pre-booking required)

### Facilities Summary

- 24hr power
- In-tent charging facilities with universal adaptor
- Credit card facilities
- Daily scheduled flights
- 4x4 custom game vehicles
- Wi-Fi internet throughout the camp
- Gift shop
- Children's menu
- Swimming pool
- Laundry
- Silver Eco-rating 2018 with Eco-Tourism Kenya

### Open/Closed

Open all year round, minimum 2 night stay.



## How To Get There

Keekorok airstrip is a 45 minute flight from Wilson Airport, and a 45 minute drive from camp.

- Twice daily scheduled Safarilink flight departing Nairobi Wilson
- Once daily scheduled Safarilink flight from Shaba/ Samburu via Lewa and Nanyuki
- Three times daily in high season and twice daily in low season Air Kenya flight departing Nairobi Wilson
- Once daily scheduled Air Kenya flight from Meru via Lewa and Nanyuki
- Once daily scheduled Mombasa Air flight from Mombasa, via Ukunda and Amboseli
- Once daily scheduled Blue Sky flight from Mombasa via Ukunda (Diani)
- Private charters from anywhere
- Sand River Masai Mara is on the Elewana SkySafari Kenyan Classic and Connoisseur itineraries

## Camp & Airstrip Coordinates

- Keekorok airstrip coordinates:  
1° 35' 09"S, 35° 15' 34" E
- Camp coordinates:  
1° 37' 14" S, 35° 09' 45" E

## Electricity

- Generator providing 24hr power in all rooms for lighting and charging electronics
- All game vehicles are fitted with inverters for battery charging on game drives
- Universal adaptors provided
- Hair-dryers are supported and provided in all tented rooms

## Water

Mineral water is provided free of charge from dispenser points. Mineral water provided during meals and in rooms. Guests are issued with a refillable bottle.

## Meal Policy

- Individual dining. Meal times are flexible.
- Dining styles are as follows:  
Breakfast: À la carte menu  
Lunch: Set Menu  
Dinner: Set Menu
- Individual dietary requests can be satisfied with advance notice
- Picnic breakfasts and lunches available for game drives.
- Bush breakfasts with live station, bush lunches and sundowners.
- Select premium wine list.

Please inform us about any dietary requirements or allergies prior to arrival.

## Masai Mara Climate

Altitude: 5200ft

Wet months: April, May & November.

Hot/warm days, cool nights, no humidity.

## Malaria

Areas higher than approximately 4,000ft, including Sand River, can be considered very low risk for malaria. Tents are sealed and beds have mosquito nets.

## Communication Services

Internet: Wi-Fi internet is available in all rooms and public areas.

Mobile phones: Phone signal available, but limited.

## Children's Activities

- Swimming pool
- Guided Camp "bush" walks - short walks around camp looking at the trees, flowers, grasses, insects, birds and bird calls, mammals, tracks and droppings
- Various board games and playing cards available in camp
- Warrior training - Learning how to make a fire, throw the Masai rungu, and make and use a bow and arrow
- School visit - during normal term times
- Children's menu

## Special Features & Key Wildlife In The Area

- The Masai Mara National Reserve is renowned for the spectacular wildebeest migration, and Sand River Masai Mara camp puts guests in the heart of the action. Marvel at the sheer numbers of animals during the migration time, and enjoy the opportunity to witness a frantic river crossing.
- Outside of the migration months, the Masai Mara National Reserve is still teeming with game, and game spotting is generally excellent year-round. Guests will see elephants, lions, cheetah, leopard, eland, hyena, giraffe and zebra to name a few.
- The Masai Mara is also home to the black rhino, providing guests the opportunity to see this native species in its natural habitat.

# Arusha

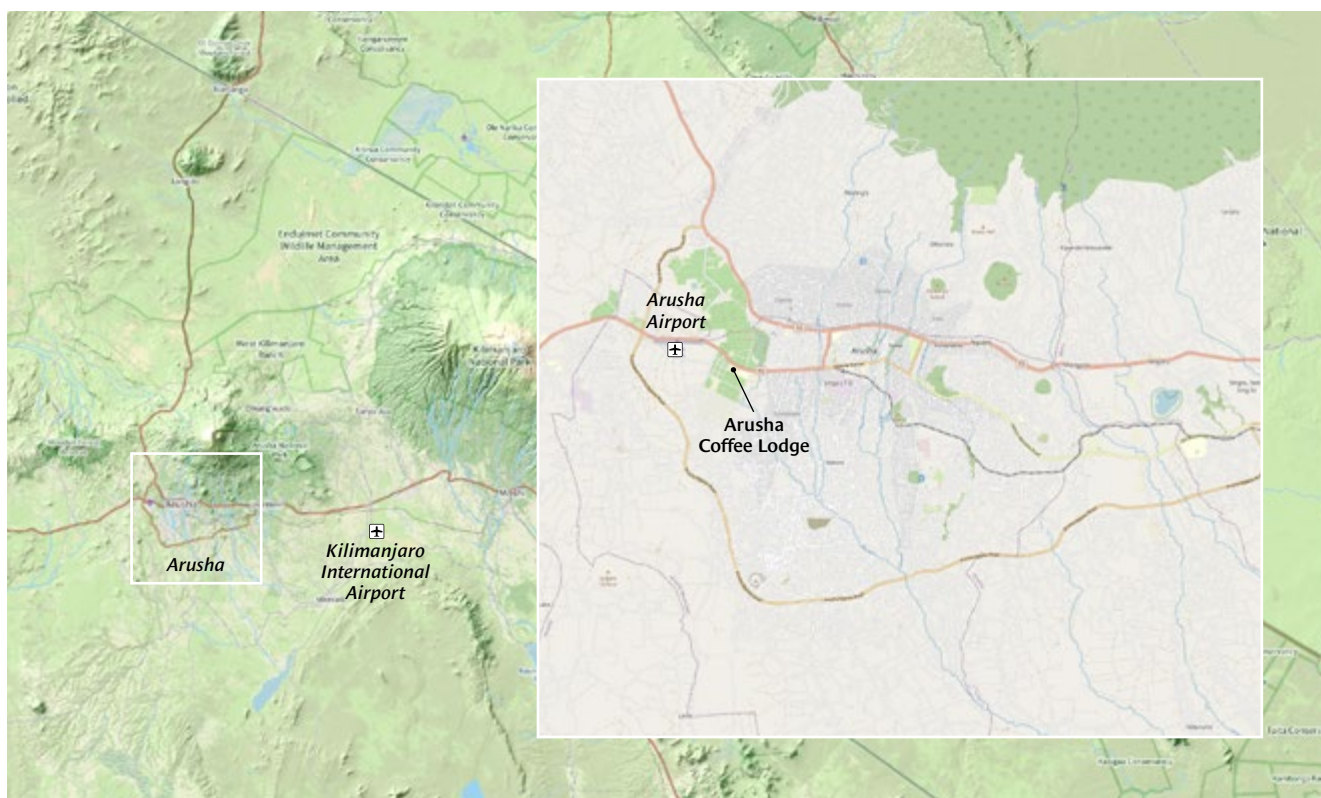
## ARUSHA



Arusha is a small but busy Tanzanian city on the southern side of Mt Meru, close to the border of Kenya.

Arusha is the centre for wildlife tourism in Northern Tanzania as it is the gateway to many of Tanzania's premium safari parks and destinations, including the Serengeti, Manyara, Ngorongoro and Mt Kilimanjaro. At 1400 meters, Arusha has a cool comfortable climate, with fertile forest soils that have historically supported expansive coffee plantations, many of which are still operational today. Arusha town is also the commercial centre for mining of Tanzanite, a precious stone only found in Tanzania, and said to be a thousand times rarer than diamonds.

Arusha Coffee Lodge is ideally located on the Western edge of Arusha town, on the tranquil grounds of Burka Coffee Estate, one of the largest in Tanzania. It is conveniently located close to Arusha Airport, and along the road leading out to Tanzania's Tarangire, Manyara, and Serengeti National Parks and Ngorongoro Conservation Area. With a convenient location and beautiful setting, Arusha Coffee Lodge provides the perfect location to begin and end a safari adventure holiday.





**Arusha  
Coffee Lodge**

TANZANIA

## Elewana Arusha Coffee Lodge

### Location

Burka Coffee Estate, Arusha

### Accommodation

30 Plantation Houses, comprising of 18 Plantation Rooms and 12 Plantation Suites.

- Plantation Rooms ~ En suite rooms with a shower and bath, verandah, and in-room log fire. 8 doubles, 4 twins and 6 triples (45m<sup>2</sup>).
- Plantation Suites ~ En suite rooms with a shower and bath, flat-screen television with satellite TV service, private sun terrace with log fire, verandah, mini-bar and personal room attendant. 4 doubles, 5 twin and 3 convertible (58m<sup>2</sup>).
- Maximum Capacity ~ 69 guests

### Description

Arusha Coffee Lodge is a delightful sanctuary of aromas, gourmet food and vibrant gardens located on the expansive grounds of a verdant coffee plantation. Arusha Coffee Lodge is made up of a main area incorporating a restaurant, a café bistro, various boutiques at the Traders Walk, a spa and a swimming pool. The rooms and suites spill off to the left of the main area, each looking out onto coffee trees and surrounding gardens.

The Grill Room restaurant and The Bistro boast menus to satisfy the most discerning of palates, successfully fusing international culinary prowess with locally-sourced ingredients. The Bistro also has a wood-fired pizza oven. Other culinary delights are the garden lunches - a 4-course alfresco buffet hosted daily in the garden, or the traditional Swahili food offerings at Jikoni in the Trader's Walk.

### Unique Selling Points

- Coffee Tour ~ Located within the grounds of an operational coffee plantation, guests can partake in a coffee tour, showing the process that brings a coffee bean from 'tree to cup' - from cultivation, to harvesting, drying and roasting. The tour culminates in an all-important tasting of the farm's coffee blends.
- Traders Walk Boutiques ~ A collection of 5 on site boutiques offering up food and shopping options:
- Shanga ~ A heart-warming social enterprise, Shanga is a workshop run by Tanzanians with disabilities who produce beautiful arts and crafts, often using recycled materials such as glass bottles, which are turned into colourful jewellery, beads and glassware.

- Tanzanite Centre ~ A remarkable precious stone of a deep blue/violet colour found only at Mererani near Arusha, Tanzanite is said to be a thousand times rarer than diamonds. This boutique sells beautiful Tanzanite jewellery and loose stones.
- Soko Giftshop ~ Stocked with all sorts of great momentos, keepsakes and wonderful gifts.
- Kahawa ~ Coffee shop with freshly brewed coffee and delicious home-baked cakes.
- Jikoni ~ An open-air dining experience that provides a window into Swahili culture and cuisine. Dining is often accompanied by live music. Hours of operation are seasonal and advance booking is a must.
- Location ~ Arusha Coffee Lodge's location is a combination of tranquillity and convenience. Situated on the fertile grounds of a coffee plantation, Arusha Coffee Lodge is a sanctuary of peaceful gardens right on the doorstep of Arusha city. The lodge is also close to Arusha airport and situated along the road leading to Tanzania's most famous national parks, making it the best place to begin and end a safari.
- Elegant accommodation ~ Reminiscent of traditional plantation houses outside, the rooms and suites are modern and spacious inside. All furnishings and amenities were designed with ultimate comfort in mind. Arusha Coffee Lodge combines the warmth of an African welcome with the familiarity of a boutique hotel.

### Activities At The Lodge

- Coffee tours
- Shopping and cafés
- Spa treatments at Peaberries Spa
- Swimming pool (residents only)
- Bird watching in the gardens
- Day trips to Arusha National Park with picnic lunch
- Day trips to Mt Meru with picnic lunch

### Activities Nearby The Lodge

- Masai markets
- Golf at Kiligolf (advanced booking required)
- Tanzanite Museum
- Museum of Natural History
- Arusha Cultural Heritage Centre



## Facilities Summary

- 24 hr power
- Charging facilities in rooms
- Credit card facilities
- Spa and massage
- Restaurants
- Swimming pool
- Conference facilities
- Wi-Fi internet throughout the lodge
- Wood-fired pizza oven
- Children's menu
- Laundry

## Open/Closed

Open all year round.

## How To Get There

Arusha airport is a 10 minute drive from the lodge.

Kilimanjaro International Airport is a 1.5 hr drive from the lodge.

- Regional airlines including Precision Air, Air Excel, Coastal Aviation, Regional Air and Tropical Air fly in and out of Arusha airport daily to/from various safari and coastal locations.
- Many international airlines fly into Kilimanjaro International Airport, including Qatar Airways, Turkish Airlines, KLM, Kenya Airways, and Ethiopian Airlines.
- Arusha Coffee Lodge is on the Elewana SkySafari Tanzania Classic itinerary.

## Lodge & Airstrip Coordinates

- Arusha Airport coordinates:  
S03°22'00" E36°37'19"
- Kilimanjaro International Airport coordinates:  
S03°25'46" E37°04'28"
- Lodge coordinates:  
S3° 22' 28" E36° 38' 37"

## Electricity

- The lodge's electricity is supplied by mains power, with a back-up generator.
- Entire lodge and all rooms have 24hr power.
- All rooms have charging facilities with international adaptors.
- Hair-dryers are supported and provided in all rooms.

## Water

Mineral water is supplied in all the rooms and with meals included in accommodation price. Water is available at all restaurants and eating places.

## Meal Policy

- Meals inclusion depends on accommodation package.
- The Grill Room and The Bistro both offer à la carte menus that can be tailored to any dietary requirements.
- The garden luncheon is an al fresco buffet.
- At the Trader's Walk, Jikoni is a small restaurant offering traditional Swahili style food. Kahawa is a small café with cakes and pastries.
- Room service available. Picnic lunches available for day excursions.

## Arusha Climate

Altitude: Approximately 4500 ft

Wet months: March, April, November & December

Warm, dry days and cool nights, low humidity

## Malaria

With a high elevation and cool night time temperatures, Arusha is a low-risk malaria area. All beds have mosquito nets.

## Communication Services

- Internet: Wi-Fi internet is available throughout the lodge
- Mobile Phones: Phone signal is available and good

## Children's Activities

- Playground: with jungle gym, slide and swings
- Build your own pizza: create and bake your own pizza at the outside pizza oven
- Swimming pool
- Babysitting available
- Kiddies Coffee Tour
- Shanga Tour with Creative Craft Activities
- Board games Available

## Special Features In The Area

- Arusha is the hub of northern Tanzania safaris, a jumping off centre for Tarangire, Ngorongoro, Manyara, Serengeti, as well as some of the smaller parks, like Arusha National Park.
- Traders Walk, a collection of five boutiques on the Arusha Coffee Lodge grounds, is a wonderful place to satisfy shopping and eating wishes.
- Arusha is a centre for Tanzanite mining, and Arusha Coffee Lodge's "Traders Walk" incorporates a Tanzanite jewellery shop. Excursions to the Tanzanite museum in Arusha city can be arranged.
- Arusha is close to the climbing routes for Mt. Kilimanjaro, and is a good base to start your climb.

# Tarangire Eco-System

## TARANGIRE NATIONAL PARK



Covering an area of 2850 km<sup>2</sup>, the Tarangire National Park is named after the perennial river that runs through the heart of the park. The park is only a part of a greater eco-system incorporating Manyara National Reserve and community conservancies, known as Wildlife Management Areas.

During the dry season the Tarangire River becomes a sole source of water for many wildlife, and the area becomes host to a migration of animals seeking out the lush green pastures. During these months, the game viewing is exceptional with wildebeest, zebra, buffalo, eland, lesser and greater kudu to name a few, as well as the usual predators of lion, leopard and hyena. The park also has a very healthy population of elephant, with up to 3,000 in the park during the dry months.

Tarangire National Park is often neglected on safari itineraries along the northern route, in favour of the better known Serengeti and Ngorongoro Crater. As such, people who do opt to visit this gem of a park are treated to an exclusive safari experience with fantastic game viewing, away from the hustle and bustle of the crowds.



Tarangire Treetops is located in a private 312 km<sup>2</sup> Wildlife Management Area adjoining the park, called Randilen. The landscape of Tarangire is instantly recognisable by its magnificent baobab trees, dotted throughout the area. Tarangire Treetops offers a one-of-a-kind experience, with rooms built onto elevated platforms to look over the branches of these beautiful baobabs - creating the feel of a luxury treehouse.

The camp has easy access to both the National Park as well as the conservancy. Within the conservancy guests are able to enjoy bush walks and night drives, giving the opportunity to experience nature in a unique and different way to the customary game drive.

## Elewana Tarangire Treetops

### Location

Randilen Wildlife Management Area, bordering Tarangire National Park

### Accommodation

- 20 luxury tented rooms on elevated platforms with thatched roofs. The rooms are double/twin convertible (All rooms are 62m<sup>2</sup> with balcony 74m<sup>2</sup>).
- Maximum Capacity ~ 49 guests

### Description

On the path of an annual elephant migration, Tarangire Treetops sits alone in a 312km<sup>2</sup> private wildlife area bordering Tarangire National Park, amid a landscape of rolling, baobab-studded hills. Elevated “treehouse” suites are perched high up with views over the adjacent baobab and marula trees, giving Tarangire Treetops an adventurous and exotic feel.

Twenty suites, with a wide private balconies, are lavishly furnished. Natural materials are blended with contemporary Africana décor, to provide guests with a unique and most memorable safari experience. All the suites are either sunset-facing, sunrise-facing or overlook the camp’s waterhole and animal trail.

Encasing an impressive baobab tree, the spacious and tranquil reception, lounge and dining room overlook the swimming pool and a waterhole that sees a steady flow of wild animal visitors.

With the natural beauty of the hills and dry river beds begging to be explored, guests can enjoy guided walking safaris, day or night time game drives and the enchantment of bush dining.

### Unique Selling Points

- Accommodations ~ The rooms of Tarangire Treetops are one-of-a-kind. Elevated platforms place guests among the baobab and marula trees, creating the feel of a luxury treehouse.
- Location ~ Situated in its own private conservancy, guests of Tarangire Treetops enjoy a secluded and private safari experience but with easy access to Tarangire National Park.
- Bush walks ~ Located outside the National Park in Randilen conservancy, the camp is able to conduct bush walks with guests. This activity allows guests to get “up close and personal” with nature, and experience the bush

to a more intimate degree - the flora, the fauna, the animal tracks, the insects - the things that can be missed from a game vehicle. Walks can be a relaxing ramble, or an energetic hike.

- Night game drives ~ A night drive in the African bush affords the opportunity to see an array of creatures who prefer the cover of night. From wide-eyed lesser galagos, to ambling porcupines and elusive leopards, the African bush hosts a different assortment of creatures after dark.

### Activities

- Shared game drives in 4x4 custom vehicles (exclusive use available at a day rate)
- Night game drives
- Guided bush walks (age restrictions apply to children under 16 yrs) All bush walks are subject to the discretion of the lead guide due to the nature of the activity
- Bushmeals and sundowners
- Swimming
- Gift shop
- Cultural visits

### Facilities Summary

- 24hr power
- In-room charging facilities
- Credit card facilities
- Daily scheduled flights
- 4x4 custom game vehicles
- Wi-Fi internet in main areas
- Swimming pool
- Motorised buggy for transport to/from rooms and ramp access to five rooms
- Children’s menu
- Laundry

### Open/Closed

Open all year round, minimum 2 night stay.

### How To Get There

Kuro Airstrip is a 20 minute flight from Arusha Airstrip, and a 1.5hr drive from the camp.

- Once daily Air Excel flight departing Arusha.
- One daily scheduled Coastal Aviation flight departing Arusha

- Private charters from anywhere can operate into Kuro Airstrip
- With permission a helicopter can land at a school football field, 20min drive to the lodge
- The camp is a 2-3hr drive from Arusha.
- Tarangire Treetops is on the Elewana SkySafari Tanzania Classic itinerary.

### Camp & Airstrip Coordinates

- Kuro Airstrip coordinates:  
S 04 00'47" E 036 04'72"
- Camp coordinates:  
S 03 46'31.7" E 36 09'13.0"

### Electricity

- Power provided by generator.
- 24hr power in all the rooms for lights and charging electronics.
- All game vehicles are fitted with inverters for battery charging on game drives.
- Guests are recommended to bring converters and universal plug adaptors. The camp uses UK square three pin plugs
- Hair-dryers are supported and provided in all rooms.

### Water

Mineral water is provided free of charge from dispenser points. Mineral water provided during meals and in rooms. Guests are issued with a refillable bottle.

### Meal Policy

- Individual dining. Meal times are flexible.
- Dining styles are as follows:  
Breakfast: À la carte menu  
Lunch: À la carte menu  
Dinner: À la carte menu
- Individual dietary requests can be satisfied with advance notice
- Picnic breakfasts and lunches available for game drives.
- Bush breakfasts with live station, bush lunches and sundowners.
- Select premium wine list.

Please inform us about any dietary requirements or allergies prior to arrival.

### Tarangire Climate

Altitude: 2900-4000ft

Wet months: November to May, March and April with heaviest rains.

Warm, dry days & cool nights, low humidity.

### Malaria

Tarangire Treetops is located in a dry area of low population density, as such it has a very low malaria risk. Treehouse suites are sealed with mesh screens.

### Communication Services

Internet: Wi-Fi internet available in the main public areas.  
Mobile phones: Phone signal available but limited.

### Children's Activities

- Swimming pool
- Guided Camp "bush" walks - short walks looking at the trees, flowers, grasses, insects, birds and bird calls, mammals, tracks and droppings
- Warrior training - Learn how to make a fire, throw the Masai rungu, and make and use a bow and arrow
- Roast marshmallows around the campfire
- Learn about the baobab tree, its African folklore and its importance in the ecosystem, including all the animals that make it their home.
- Children's menu

### Special Features & Key Wildlife In The Area

- Home to over 3,000 elephants in the dry season and a substantial number in the wet season, Tarangire National Park offers one of the best elephant viewing locations.
- During the dry season, Tarangire National Park and the Randilen WMA become home to a myriad of species searching for water. It is possible to see buffalo, giraffe, zebra, eland, lion, leopard, impala, warthogs, waterbucks, hartebeest, jackals, lesser kudu, greater kudu and Thompson's Gazelle. The area is also very good for spotting wild dog, and the very quaint pancake tortoise.
- The Tarangire eco-system is known for its impressive baobab trees dotting the landscape. These mystic trees have both ecological significance for all the creatures that make it their home and live off its food, and traditional significance to the local Masai people who have incorporated the tree into their folklore.

# Ngorongoro Conservation Area

---

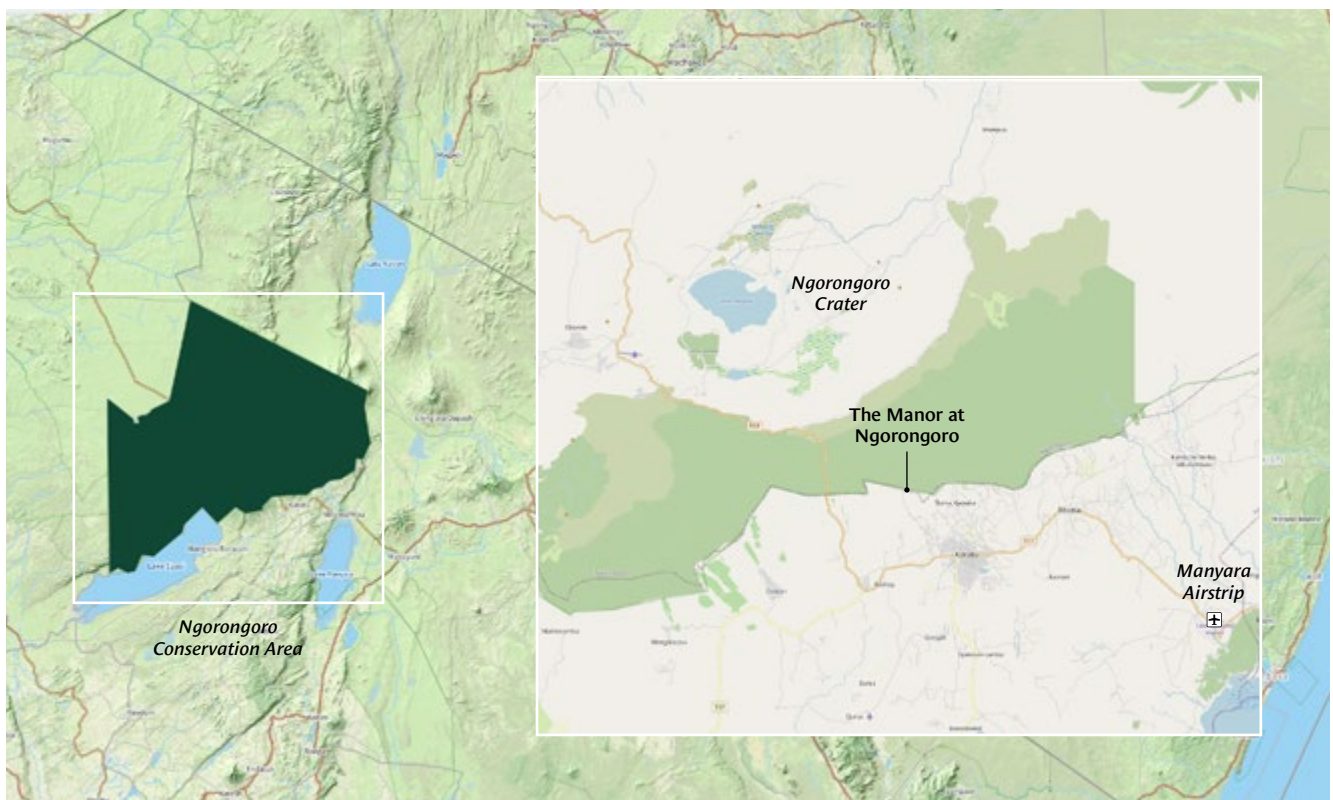
## THE NGORONGORO CRATER



Famous for the breathtakingly-impressive Ngorongoro crater, the area is part of the volcanic mountain highlands of northern Tanzania. Eighteen kilometres in diameter, the crater is a “caldera” formed at a time of volcanic eruption, and now home to abundant wildlife. The rim of the crater is a lush, cool and dewy mountain forest with coffee plantations leading up to the conservation area boundary. The crater floor of open grasslands allows uninhibited viewing of the plentiful wildlife.

Together with the Serengeti National Park, this area is a UNESCO World Heritage Site and the crater is unofficially an “Eighth wonder of the world”.

Visitors to the crater follow a specific procedure, carefully controlled by the park authorities, of climbing down the steep crater walls in the early morning to the grasslands - home to a myriad of wildlife species on the crater floor - and departing the crater by mid-afternoon. The unique nature of this area has made it a favourite safari destination.



The Manor at Ngorongoro is within a working coffee farm bordering the crater rim forest. Set amongst beautiful gardens and green coffee fields, guests have easy access to the wonders of the Ngorongoro Crater, and the lodge can provide a unique private picnic lunch experience on the crater floor.



## Elewana Manor At Ngorongoro

### Location

Shangri-La Coffee Estate, adjacent to the Ngorongoro Crater

### Accommodation

- 18 individual guest rooms in 9 Manor Cottages (58m<sup>2</sup>).
- 1 Stable Cottage for families with 3 guest rooms. Includes 2 bathrooms and 1 small children's bathroom, a family lounge area, a TV room and private dining (116m<sup>2</sup>).
- Maximum Capacity ~ 49 guests

### Description

The Manor at Ngorongoro, with its luxurious cottages and magnificent Manor House, brings "old-world" grandeur to a green and lush setting. Think cigars and brandy, elegant fine dining, and post-dinner snooker. The Manor is one of the most lavish properties on the safari circuit; the rooms are cottage suites within the manicured gardens, and each suite has a sitting room, fireplace and enormous bathroom. There is nothing like returning from a day out on safari to a hot bubbly soak in your Victorian bathtub.

Situated on one of the oldest coffee plantations in East Africa, and an area of Dutch settlement, the classical Cape-Dutch architecture of The Manor is a fitting tribute to the rich history of the area.

The Manor has easy access to both the Ngorongoro Crater and Lake Manyara National Park, famed for its flamingos. A luxurious safari base, with a spa, swimming pool and stable of horses to explore the surrounding coffee plantations and countryside. The Manor also arranges special picnics and sundowners within the estate, and coffee tours for those interested in learning more about Tanzania's famous coffee trade.

### Unique Selling Points

- Classic architecture and beautiful grounds ~ The Manor is designed in the old Cape-Dutch style of yesteryear, and is situated amongst lush and colourful gardens, offering a stunning and peaceful setting.
- Private campsite lunch in the Ngorongoro Crater ~ The Manor has special permission to host bush lunches in a private campsite area of the Crater, away from the crowds. The Crater lunch sites are subject to availability and early bookings are recommended. All Manor lunches in the Crater (regardless if in private campsite location) are gourmet hamper affairs, under a shady awning from the side of the car, with tables and chairs.

- Horse riding with picnic/sundowners ~ A horse ride through the coffee plantation and surrounding bush culminating in a picnic or sundowner offers a different African safari experience.
- Coffee Tours ~ Located on the grounds of a 1,500-acre Arabica coffee estate, guests can take a coffee tour and satisfy their curiosity about the coffee-making process.
- Adventure or Relax ~ Often the midway point in a safari circuit, The Manor offers the chance to adventure into to the Crater (a 25 minute drive) or Lake Manyara (a 40 minute drive), or to relax and collect oneself with a myriad of on site activities and pampering.

### Activities

- Shared game drives to Ngorongoro Crater (exclusive use available at a day rate)
- Day excursions to Lake Manyara National Park
- Day excursions to Olduvai Gorge
- Bush lunches
- Horse riding
- Coffee tours
- Guided nature walks around the property
- Massage and spa treatments
- Swimming
- Child-friendly activities

### Facilities Summary

- 24hr power
- Charging facilities in rooms and all public areas
- Credit card facilities
- Daily scheduled flights
- 4x4 custom game vehicles
- Wi-Fi internet in the main areas and rooms
- Swimming pool
- Spa
- Gift shop
- Billiards room
- Cinema
- Children's menu
- Laundry

### Open/Closed

Open all year round, minimum 2 night stay.



## How To Get There

Lake Manyara Airstrip is a 30 min flight from Arusha Airport, and a 60 minute drive from the lodge.

- Twice daily scheduled Air Excel flights departing Arusha
- Once daily scheduled Regional Air Flights departing Arusha
- Twice daily scheduled Coastal Aviation flights departing Arusha
- Private charter from anywhere into Lake Manyara airstrip
- Helicopter landing permitted at Lake Manyara Airstrip
- The Manor is on the Elewana SkySafari Tanzania Classic itinerary

## Lodge & Airstrip Coordinates

- Lake Manyara airstrip coordinates:  
S03°22'33" E35°49'06"
- Lodge coordinates:  
S3°18'8.55" E35°38'26.66"

## Electricity

- The Manor's electricity comes from the main lines, with a backup generator
- 24 hour power in rooms and public areas
- Charging facilities in rooms and throughout public areas
- All game vehicles are fitted with inverters allowing battery charging whilst on game drives.
- Hair-dryers are supported and provided in all rooms
- International plug adaptors provided in all rooms

## Water

Mineral water is provided free of charge from bar and restaurant. Mineral water provided during meals and in rooms. Guests are issued with a refillable bottle.

## Meal Policy

- Individual dining. Meal times are flexible.
- Dining styles are as follows:  
Breakfast: À la carte menu  
Lunch: À la carte menu  
Dinner: 5-course table d'hôte menu
- Individual dietary requests can be satisfied with advance notice
- Formal dining room, dining conservatory or room service.
- Picnic breakfasts and lunches for game drives, and bush lunches available at private picnic site in Crater.

Please inform us about any dietary requirements or allergies prior to arrival.

## Ngorongoro Climate

Altitude: Approximately 3310 - 11959ft

Wet months: November to May, March & April with heaviest rains.

Cool misty mornings, warm days, and chilly evenings.

## Malaria

Being in an area of high altitude with cold nights, the risk of malaria is extremely low. Cottage suites are sealed against mosquitoes at night.

## Communication Services

- Internet: Wi-Fi internet is available in all rooms and public areas
- Mobile phones: Phone signal is available

## Children's Activities

- Pony riding (around the property) and horse riding (around the coffee plantation for more experienced riders) for up to 1 or 2 hours.
- Satellite TV in a private Cinema room
- Coffee Tours around the plantation (these are usually accompanied by adults).
- 'L'il Bee' massage treatments
- Visit to the local farm to see the animals
- Guided scenic / nature walks around the property with an activity book to identify as many animals, birds and beetles as possible.
- Croquet
- Kiddies movie nights
- Strawberry and carrot picking from the veggie patch (then feed the kids strawberries and the horses carrots)
- Children's menu

## Special Features & Key Wildlife In The Area

- The Ngorongoro crater is a breathtaking sight, and firmly deserves the unofficial title of "eighth wonder of the world". The crater floor is a Garden of Eden for wildlife viewing, with one of the highest densities of wildlife in Africa. Lions, elephants, buffalo, impala, cheetah, black rhinos, serval cat, hyena, jackal and zebra to name just a few.
- Lake Manyara National Park has an astounding variety of landscape for the relatively small national park that it is. From dense forest and open grassland, to soda lake wetlands and acacia woodlands. In each variety of landscape unique animals are found, from bushbuck and blue monkeys in the forest, antelopes and cheetahs in the grasslands, hippos and flamingos in the wetlands, and tree-climbing lions and elephants in the acacia woodlands.

# Serengeti Eco-System

## SERENGETI NATIONAL PARK



Serengeti National Park is at the heart of the greater Serengeti ecosystem, which is defined by the area covered during the annual wildebeest migration. The area borders the Ngorongoro Conservation Area, all 5280 km<sup>2</sup> of which was declared a World Heritage Site in 1979.

On the plains of the Serengeti National Park, approx. two million wildebeest and zebra migrate annually across this vast area following the weather patterns in search of grazing and water. The herds tend to congregate and calve in the southern part of Serengeti from January to March, before beginning the northern trek into the northern Serengeti plains and the Masai Mara in Kenya before looping back again - this leg of the epic journey occurring between April and December.

A dramatic volcanic and verdant landscape, the Serengeti is a permanent home to a plethora of other wildlife which can be viewed year round. One of the few remaining places to view black rhino in its natural habitat, the Serengeti offers the chance to view all of the Big 5. Its abundance of animals has seen the Serengeti as the subject of and location for many wildlife documentaries over the years.



Serengeti Pioneer Camp has a wonderfully secluded location overlooking the Moru Kopjes in central Southern Serengeti. It has good access to the wildebeest migration for most of the year, particularly in the calving season. Areas of special interest are the Moru Kopjes with their prehistoric paintings and musical rocks, and Lake Magadi, home to flocks of flamingos.

Serengeti Migration Camp is in central Northern Serengeti. In a quiet, less visited part of the Serengeti, the area feels wonderfully private. Serengeti Migration Camp is in an ideal location to enjoy the Serengeti's wildlife, while also having easy access to the Mara River during the northern migration season.

## Elewana Serengeti Pioneer Camp

### Location

Southern Central Serengeti

### Accommodation

- 11 en suite safari tents ~ all eleven tents can be doubles or twins (38m<sup>2</sup>)
- 1 family safari tent ~ family tent consists of two en suite bedrooms with a shared veranda (75m<sup>2</sup>)
- Maximum Capacity ~ 32 guests

### Description

Serengeti Pioneer Camp is perched on a rocky outcrop in Southern central Serengeti and affords dramatic views of the Serengeti plains that drift endlessly into the horizon. Close to Moru Kopjes, it is a site originally chosen by world renowned researcher and film maker, Alan Root.

A camp designed for limited impact on its natural surroundings, Pioneer Camp has the feel of a 1930s mobile safari camp, but with all the modern day amenities of a luxury camp. The 12 tents are tastefully decorated in Campaign-style safari furniture, with en suite bathrooms offering steaming hot solar-heated showers. Each tent has a personal room attendant to look after guests' needs. Ensnared among the natural bush, the tented suites offer a truly back-to-nature feel.

The views from the bar and lounge are spectacular, providing the most memorable and convenient safari sundowner location.

### Unique Selling Points

- Location ~ Perched upon its own kopje in a secluded area of the park, Serengeti Pioneer Camp enjoys spectacular views across the Serengeti plains and of Moru Kopjes.
- Southern migration ~ During January to March the migration is making its way through the southern route of the journey. In the months of January to February calving occurs, and some 400,000 wildebeest calves are born in a period of just a few weeks. This event attracts various predators, particularly lions. Serengeti Pioneer Camp is located close enough to enjoy a full-day game drive to view this natural phenomenon, and then return to camp in its quiet private corner of the Serengeti.
- Private picnic site ~ Serengeti Pioneer Camp has special permission from the park authorities to use a private picnic site on top of a hill offering stunning views over the Serengeti plains, that can be enjoyed in total privacy. Pre-booking is necessary.

- Moru Kopjes ~ A rocky outcrop with historical significance, several of the boulders display ancient Masai paintings. An important and unique feature of the kopjes is Ngong rock. A geological phenomenon, musical sounds are produced when the rock is hit with smaller rocks. Ngong rock has been used as a communication tool for local Masai for centuries.
- Lake Magadi ~ A large soda lake accessible from camp, Lake Magadi is seasonally home to some few hundred flamingos, their pink masses a marvel to behold.
- Cheetah Conservation ~ The camp unofficially supports the Serengeti Cheetah Project, with the managers hosting talks for the guests on the latest cheetah research in the area. Guests are provided brochures for identifying the cheetah individuals in the area and encouraged to help by reporting sightings.

### Activities

- Shared game drives in custom 4x4 vehicles (exclusive use available at day rate)
- Bush picnics at private picnic site
- Sundowners
- Swimming pool
- Camp-fire dining
- Child-friendly activities
- Balloon Safaris (price not included and pre-booking required)

### Facilities Summary

- 24hr solar power
- Charging facilities in main area
- Credit card facilities
- Daily scheduled flights
- Wi-Fi internet in the main areas
- 4x4 custom game vehicles
- Gift shop
- Swimming pool
- Children's menu
- Laundry

### Open/Closed

Open all year round, minimum 2 night stay.

## How To Get There

Seronera airstrip is a 1hr flight from Arusha airport, and a 50 minute drive from camp.

- Twice daily scheduled Air Excel flight departing from Arusha.
- Once daily scheduled Regional Air flight departing from Arusha.
- Once daily scheduled Auric Air flight departing from Arusha via Manyara.
- Thrice daily scheduled Coastal flight departing from numerous destinations.
- Private charters from anywhere
- Serengeti Pioneer Camp is on the Elewana SkySafari Tanzania Classic itinerary

## Camp & Airstrip Coordinates

- Seronera Airstrip coordinates:  
S 02° 27'25" E 034° 49'17"
- Camp coordinates:  
S 2°39'32" E 34° 44'57"

## Electricity

- The camp is 100% solar powered with a backup generator.
- 24hr power in tents for lighting.
- Charging facilities are in main area available 24hrs. Universal adaptors are available for use.
- All game vehicles fitted with inverters for charging batteries on game drives.
- Hair dryers are not supported. A hairdryer is available in the main charging area

## Water

Mineral water is provided free of charge from dispenser points. Mineral water provided during meals and in rooms. Guests are issued with a refillable bottle.

## Meal Policy

- Individual dining. Meal times are flexible.
- Dining styles are as follows:  
Breakfast: À la carte menu  
Lunch: Set menu  
Dinner: Set menu
- Individual dietary requests can be satisfied with advance notice
- Picnic breakfasts and lunches available for game drives.
- Bush lunches on scenic viewpoint.
- Select premium wine list.

Please inform us about any dietary requirements or allergies prior to arrival.

## Serengeti Climate

Altitude: 4900ft

Wet months: November to May, March & April with heaviest rains.

Warm days, cool nights, no humidity

## Malaria

Areas over 4000ft, including Serengeti Pioneer Camp, can be considered extremely low risk malaria areas. Tents are sealed against mosquitoes at night.

## Communication Services

Internet: Wi-Fi internet is available in public areas.

Mobile phones: Phone signal is limited.

## Children's Activities

- Guided camp nature walks - short walks looking at the trees, flowers, grasses, insects, birds and bird calls, mammals, tracks and droppings.
- Bush Masai training - learn Masai traditions, the use of some plants and trees, and stories of the bush.
- Animal Safari Bingo - a game to take out on game drives, to identify the animals and tick off your cards.
- Children's menu

## Special Features & Key Wildlife In The Area

- The calving season of the wildebeest is an evolutionary phenomenon. In the space of a very short couple of weeks between January to March each year, 400,000 calves are born to the great migration herds while they reside in Southern Serengeti. The events attracts many predators, but through the sheer volume of births the population number and survival of the wildebeest is ensured.
- Seasonally, Lake Magadi becomes home to hundreds of flamingos, and is only a short drive from camp.
- As well as its historical significance with Masai paintings and Ngong rock, Moru Kopje also acts as a natural reservoir for water, attracting much game for most of the year. It is a particular favourite for big cats, and one can often view a majestic lion basking in the sun on the rocks.

## Elewana Serengeti Migration Camp

### Location

Northern Serengeti National Park

### Accommodation

- 20 spacious canvas tents on elevated hardwood floor platforms ~ all convertible twin/doubles (64m<sup>2</sup>).
- Four rooms hold a sleeper couch that can be used as an extra bed and another extra bed can be used to fit 2 adults and 2 children.
- Maximum Capacity ~ 49 guests

### Description

Lining the banks of the famous Grumeti river, home to pods of grunting and wallowing hippos, Serengeti Migration Camp perfectly encapsulates the luxury camp experience.

Overlooking a kopje and sweeping plains across the river, the camp's main areas are designed for enjoyment of the expansive view and being captivated by the colours of a spectacular Serengeti sunset. An open-plan lounge, dining room with large balcony, and a sunset viewing platform with camp fire ensure that all delicious meals and satisfying drinks are accompanied by a stunning view. A large swimming pool invites guests for a refreshing swim during the heat of the day.

Twenty luxurious and elevated en suite tents are incredibly spacious and tastefully decorated in rich dark wood and leather furnishings. Serengeti Migration Camp tents have the feel of a stately hotel room, but with canvas walls to let the sounds of the African bush remind you of your truly wild location. Large wrap-around verandahs afford 360-degree views of the surrounding African bush.

Situated on the path of the annual Great Migration, during the months of April through June and again in late October to December, guests to the camp are treated to the spectacular view of a landscape dotted with wildebeest from horizon to horizon. Sitting in a quiet and pristine corner of the world-famous Serengeti, guests will enjoy year-round viewing of incredible game, including the opportunity to experience the Big Five.

### Unique Selling Points

- Location ~ Serengeti Migration Camp is uniquely located in a secluded idyll of north central Serengeti on the route of the great migration. From April to July/August, and again from November through December, guests can

enjoy a "private migration", with hundreds of thousands of wildebeest dotting the landscape from horizon to horizon.

- Mara River crossing ~ Game package guests can do an easy hours game drive from the camp to the Mara River, one of the sites of the famed frenetic migration river crossings. This enables guests to enjoy the action, but return in the evening to their private haven.
- Wildlife ~ The game viewing opportunities from Serengeti Migration Camp are enviable, with the chance to see the 'Big 5' as well as abundant other wildlife. For birders, over 500 species of birds have been recorded in the area. This area of the Serengeti offers fantastic game viewing year round.

### Activities

- Shared game drives in custom 4x4 vehicles (exclusive use available at a day rate)
- Day trips to the Mara River in Masai Mara
- Bush meals and sundowners
- Guided bush walks (age restrictions apply to children under 16yrs) All bush walks are subject to the discretion of the lead guide due to the nature of the activity
- Swimming pool
- Child-friendly activities
- Balloon safaris (price not included and pre-booking required)

### Facilities Summary

- 24 hr power
- In-room charging facilities
- Credit card facilities
- Daily scheduled flights
- 4x4 custom game vehicles
- Wi-Fi internet in main areas
- Swimming pool
- Gift shop
- Children's menu
- Laundry

### Open/Closed

Open all year round, minimum 2 night stay.

## How To Get There

Lobo Airstrip is a 1hr flight from Arusha Airport, and a 40min drive from the lodge.

- Once daily scheduled Air Excel flights departing Arusha
- Once daily scheduled Regional Air flights departing Arusha
- Thrice daily scheduled Coastal Aviation flight departing Arusha
- One daily scheduled Auric Air flight departing Arusha
- Private charters from anywhere
- Serengeti Migration Camp is on the Elewana SkySafari Classic Tanzania itinerary

## Camp & Airstrip Coordinates

- Lobo airstrip coordinates:  
S2° 00' 30" E35° 09' 24"
- Camp coordinates:  
S1°55'45.31" E35°1'9.23"

## Electricity

- Generator, and solar for water heating.
- 24hr power in all rooms for lighting and charging electronics
- All game vehicles fitted with inverters for battery charging on game drives.
- Guests recommended to bring converters and universal adaptors. The camp uses UK square three pin plugs.
- Hair-dryers are supported and available in all rooms.

## Water

Mineral water is provided free of charge from dispenser points. Mineral water provided during meals and in rooms. Guests are issued with a refillable bottle.

## Meal Policy

- Individual dining. Meal times are flexible.
- Dining styles are as follows:  
Breakfast: À la carte menu  
Lunch: Set menu  
Dinner: Set menu
- Individual dietary requests can be satisfied with advance notice
- Picnic breakfasts and lunches available for game drives.
- Bush breakfasts with live station and sundowners.
- Select premium wine list.
- Please inform us about any dietary requirements or allergies prior to arrival.

## Serengeti Climate

Altitude: 3000 - 6000ft

Wet months: November to May, March & April with heaviest rains.

Warm, dry days and cool nights, no humidity.

## Malaria

Dry areas higher than 4,000ft, including Migration Camp, can be considered extremely low risk. Tents are sealed against mosquitoes at night.

## Communication Services

Internet: Wi-Fi internet available in main areas.

Mobile Phones: Phone signal very limited and not reliable in camp.

## Children's Activities

- Guided camp nature walks - short walks looking at the trees, flowers, grasses, insects, birds and bird calls, mammals, tracks and droppings.
- Swimming pool
- Mask, card and jewellery making - using feathers, seeds and beads
- Roasting marshmallows over the fire.

## Special Features & Key Wildlife In The Area

- The great migration is a key attraction for many visitors to East Africa, and Serengeti Migration Camp is located along its route ensuring that from April through June and again from late October through December guests can witness this spectacle first-hand.
- Serengeti Migration Camp has easy drive access to the Mara River for guests on Game Package, with the option of a day trip in hopes of catching a thrilling river crossing.
- The Serengeti is home to the "Big 5". It is particularly noteworthy for seeing black rhinos in their natural habitat.
- Near to camp, along the Grumeti River, are numerous pools with resident hippo. A wonderful sound of the African bush, the hippos can be heard from camp and also viewed on a guided bush walk along the river.



# Zanzibar

## ZANZIBAR



The allure of Zanzibar is legendary. Historically one of East Africa's great trading centres, the archipelago has for centuries been a crossroads of culture and a melting pot of exotic influences; where Africa, India and Arabia meet.

The Zanzibar archipelago is made up of numerous islands and islets. Each of the two main islands, Unguja (informally Zanzibar) and Pemba, has its own distinct character.

The name Zanzibar is synonymous with images of pristine white sandy beaches, and alluring azure waters. The coastline is laced with winding creeks and mangroves, interspersed by these heavenly beaches. The sea is awash with magnificent creatures and dazzling colours, discoverable by snorkelling, scuba or scenic boat trips. Dolphins, whales, sea turtles and vibrant fish are some of the amazing creatures found in the Zanzibar waters.

Other than its renowned beaches and ocean, Zanzibar's major attraction is Stone Town, a UNESCO World Heritage Site. Time has stood still here, as the white-washed stone buildings, winding alleys and local people exist as they have done for centuries. It is known for its cultural heritage, a still-living and breathing testament to the historical era of the spice and Arabic slave trade.



Kilindi Zanzibar is on a quiet white beach on the north-west coast of Zanzibar Island. Nestled among a lush forested area, Kilindi overlooks the Indian Ocean, and offers the ultimate in seclusion and romance for lovers.



**KILINDI**  
ZANZIBAR  
TANZANIA

## Elewana Kilindi Zanzibar

### Location

Northwest Zanzibar

### Accommodation

- 15 arched pavilion-style villas. All villas are doubles with domed main rooms, bathrooms with rainfall showers adjoined by a walkway, and private plunge pools (220m<sup>2</sup>). (Note - no children under 16 years)
- Maximum Capacity ~ 32 guests

### Description

Kilindi Zanzibar is located on the north-west coast of Zanzibar.

This quiet sanctuary has established a reputation as a top couples hideaway in Zanzibar. Fringed by casuarina trees and set on a magnificent private beach of pure white sand, it offers luxurious accommodations in 15 domed pavilion-style villas, spread across 50 acres of lush tropical gardens.

Each stunning villa has a private plunge pool with water features and a waterfall. A bathroom adjoined by an open-fronted walkway offers a revitalising rainfall shower. Each villa has a vantage point over the breath-taking views of the kaleidoscopic Indian ocean and bay traversed by traditional dhows.

The main building has wide archways designed to capture the sea breezes that lead through to a terrace overlooking the beach. There is a spacious bar with a waterfall feature and an indoor/outdoor dining area. Dining options include romantic dinners on the beach, by the pool, among the gardens and room service. Kilindi's delectable cuisine uses the freshest seafood caught that day, and an organic garden provides fresh crisp ingredients.

### Unique Selling Points

- Chic and private villa hideaways ~ Stunning and incredibly spacious at 220m<sup>2</sup>, each villa is placed to give ultimate privacy: a perfect romantic hideaway. Each villa is designed for maximum enjoyment of the Indian Ocean views, has its own private plunge pool and is tended to by its own personal butler.
- Delightful spa ~ An extensive array of treatments to satisfy you from head to toe, the spa combines African natural ingredients with both modern and traditional methods in the art of beauty, offering the ultimate in pampering.
- Delectable dining experiences ~ Eclectic menus offer international cuisine with island Swahili infusion, and

uses the freshest seafood and ingredients, prepared to order. All meals can be enjoyed in a setting of choice - poolside, among the gardens, on the upper terrace, on the beach or in the privacy of a pavilion.

- The beach ~ Kilindi overlooks a picturesque beach that no other hotel uses. Pure white sand, sparkling blue water and with traditional dhows traversing the bay, silhouetted against an Indian Ocean backdrop, the beach is a picturesque sight.
- Weddings/honeymoons ~ The ultimate romantic destination, Kilindi is the perfect setting for a special occasion. With a picturesque tropical backdrop and the personal touches of warm African hospitality, guests can relax and enjoy the atmosphere of romance.

### Activities Around Kilindi And Zanzibar

Most activities non-inclusive

- Paddle boards and kayaks (available to guests for free)
- Spa treatments at Kilindi's own private spa
- Snorkelling
- Scuba diving
- Jet skiing and water skiing
- Deep-sea fishing
- Spice farm tour
- Stone Town walking tour
- Catamaran and exotic sunset dhow cruises
- Day trips to Jozani Forest

### Facilities Summary

- 24 hr power
- In-room charging facilities
- Credit card facilities
- Daily scheduled regional and international flights
- Wi-Fi internet
- Spa with full treatment menu and Turkish Bath
- Boutique
- Private plunge pools
- Swimming pool
- Air-conditioned room
- Laundry

### Open/Closed

Closed April/May, with minimum 5 night stay during Festive Season (20th December - 4th January)

## How To Get There

Zanzibar airport is a 1hr 15min drive from the hotel.

- Many regional airlines service this airport, including Coastal Aviation, Regional Air, Precision Air, Zanzair and Auric Air.
- International airlines service this airport, including Qatar Airways, Alitalia, Kenya Airways and Ethiopian Airlines.

## Lodge & Airstrip Coordinates

- Zanzibar airport coordinates:  
S06°13'19.56" E39°13'29.57"
- Lodge coordinates:  
S05° 45' 34.00 E 39° 17' 24.43"

## Electricity

- Lodge is supplied by mains power, with a generator for back-up
- 24 hour power in all rooms for lighting and charging
- Adaptors are available, but guests should bring own 220/110 converters
- Hair-dryers supported and provided

## Water

Mineral water is provided free of charge from bar and restaurant. Mineral water provided during meals and in rooms.

## Meal Policy

Dining is individual anywhere in the property. Meal times are completely flexible.

Dining styles are as follows:

- Breakfast: À la carte menu
- Lunch: À la carte menu
- Dinner: Set menu

Individual dietary requests can be satisfied with advance notice

Picnic lunches are available for day excursions.

## Zanzibar Climate

Altitude: Sea Level

Wet months: April and May.

Hot days and warm nights, high humidity

## Malaria

Zanzibar beaches are regarded as not high risk areas. All beds are protected with mosquito nets.

## Communication Services

Internet: Wi-Fi internet is available in main areas.

Mobile Phone: Phone signal is available but limited.

## Children's Activities

Children under 16 years are not permitted at Kilindi.

## Special Features & Key Wildlife In The Area

- The sea life of Zanzibar is bountiful and diverse. Guests can enjoy day boat trips, scuba and snorkelling to get a glimpse of the dolphins, copious fish and vivid corals that thrive in Zanzibar's waters.
- The Zanzibar red colobus monkey can be found on a day trip to the Jozani Forest. Endemic only to the archipelago, this endangered primate is a social creature living in family groups of 30-50 individuals.
- Stone Town is a UNESCO world heritage site, and a place where history still lives. The stone buildings, meandering alleyways, and markets still existing as they have done for centuries make for a fascinating day of sightseeing.
- An ancient trading post on the Spice Trade route, Zanzibar has historically produced some of the most desired spices - nutmeg, cloves, vanilla, pepper to name a few. Spices are still grown to this day, and it is possible to do a "Spice Tour", visiting a plantation and learning some of the history of the trade.



Creative Social Enterprise  
Empowering People with Disabilities



Camps & Lodges  
In Harmony with Africa



Working With Communities  
to Conserve Wildlife