



CIRQA

PARADOR EN AREQUIPA



FACT SHEET

CIRQA

Located in the historic centre of Arequipa, in a UNESCO protected site, this former monastery dates back to the year 1540 when the city was founded. Reviving the soul of a forgone Parador and inspired by the dedicated way monks would receive travellers, CIRQA pays homage to its heritage by carrying on warm Arequipenean traditions. In appreciation for its history, today the Parador combines its original sillar stone architecture with contemporary nuances to welcome guests.

Designed by the same creative team behind Titilaka, Hotel B, and Atemporal, CIRQA is an expansion of the renowned Titilaka Lodge. Featuring the same level of services and facilities, it's the ideal gateway to acclimatise to the altitude before continuing on to higher destinations. Check in at CIRQA and check out at Titilaka to combine two spectacular Peruvian destinations into the perfect journey.

/ˈsɑrkə/

1. — “Circa” — Preposition • FORMAL •

(Used especially with years) about or approximately

The name CIRQA alludes to ‘circa’ in its attempt to determine a certain moment or period in time. Written with a Q—an ode to Arequipa—it emphasises the strong connection to the city’s history, traditions, and heritage.

2. — “Sirca” — Noun

(Used especially in reference to chilli peppers) veins

The name CIRQA alludes to the word ‘sirca’, colloquially used in reference to the pith and ribs of the Rocoto pepper – an emblematic Arequipenean ingredient – in an attempt to highlight the close relation between the Parador and the local gastronomic culture.

// Arequipa was founded circa 1540.

// The San Agustin Church’s most recent reconstruction took place circa 1883.

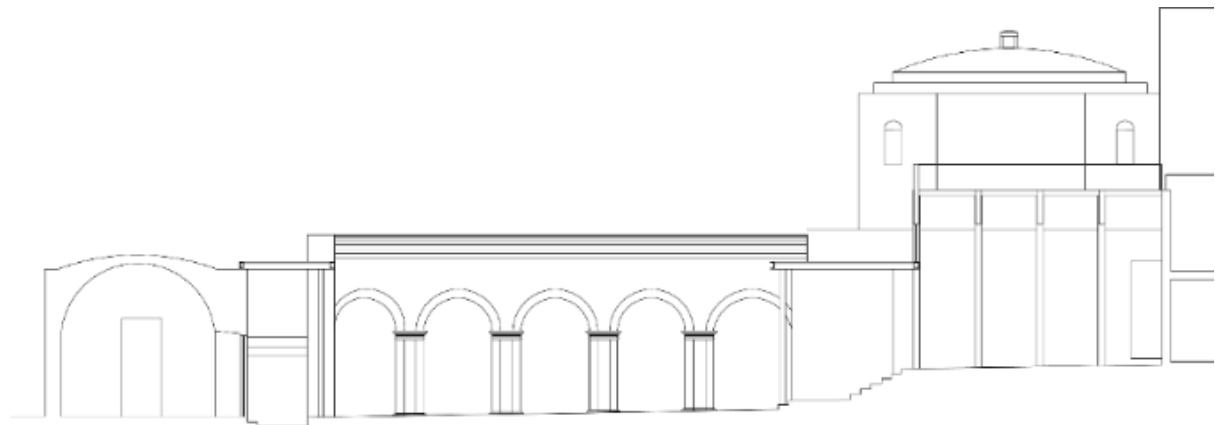
HISTORY

In 1540, the year Arequipa was built, the land was divided between its founders and the Spanish nobility of the time. The site on which CIRQA sits was granted to Alonso De Luque, a renowned scribe. He later bequeathed it to the Augustinian Order, requesting that in exchange they build a church with cloisters, patios, orchards and gardens—as well as a sepulchre for him and his wife under the future altar of Saint Nicholas of Tolentino.

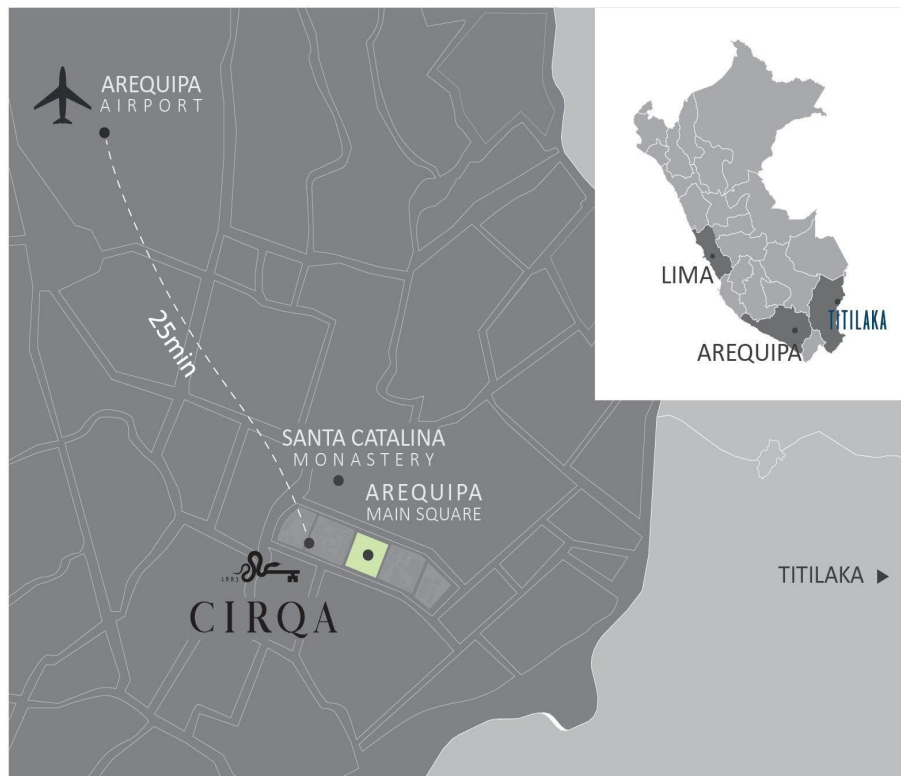
Unfortunately, successive earthquakes continuously tore down parts of the edifice causing several reconstruction processes. Because of this, a precise date or specific architectural style for the Parador can't be determined.

After Peru's independence, Spanish assets were nationalised and the property was given to the Treasury. The division of land took place once again, and the Parador was passed down from family to family. In 1883, yet another earthquake left the Church in ruins, causing the board of Almudena to auction off the entire lot. At the end of the 20th century, the property was ultimately divided into three parts, two of which now correspond to CIRQA.

Today, CIRQA is recognised for the emblematic estate it once was. It is appreciated for this centuries-long history and applauded for its astounding architectural interior. Age-old volcanic sillar rock combined with contemporary nuances create the one-of-a-kind experience CIRQA offers today.



LOCATION



Arequipa, Peru's second largest city, is the heart of the southern travel circuit and is often referred to as the White City due to its abundant sillar stone architecture. Home to three snow-capped volcanoes, this colonial gem is distinctive for its colourful monasteries, cobblestone streets, and renowned gastronomic heritage.

Arequipa has a year-round sunny climate with temperatures ranging from 10°C to 25°C (50°F - 77°F) and barely any rainfall. At 2,328 m.a.s.l. (7,637 f.a.s.l.) Arequipa reveals spectacular scenery and is the perfect gateway to acclimatise to the Andean altitude before continuing on to higher destinations.

CIRQA is located one block away from the main square, within walking distance of many of Arequipa's architectural jewels.

Address: Sucre 104, Arequipa 04001, Perú

ACCESS, CLIMATE, & ALTITUDE

By car:

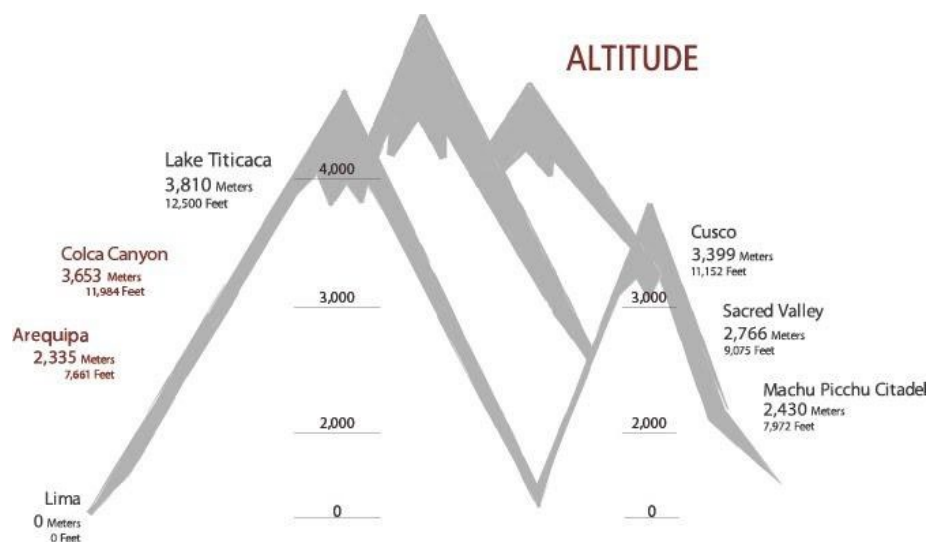
- 3 hrs from Chivay / Colca Canyon
- 6 hrs from Titilaka
- 9 hrs from Cusco
- 9 hrs from Nazca
- 16 hrs from Lima

By plane:

- 90-minute flight from Lima (>10 direct flights per day)
- 1-hour flight from Cusco (one or two direct flights per day, others with stopover in Lima)
- 2-hour flight from Santiago (two flights per week)

By train:

- 3d/2n by train from Cusco (The Andean Explorer)
 - Leaves Cusco on Thursday, arrives at Arequipa on Saturday.
 - Leaves Arequipa on Saturday, arrives at Cusco on Monday.



WEATHER

Average precipitation days	JAN 22°/9° C 71°/47° F 4.8 days	FEB 21°/9° C 71°/48° F 5.6 days	MAR 24°/8° C 76°/47° F 4.5 days	APR 25°/7° C 77°/45° F 0.7 days	MAY 22°/6° C 72°/43° F 0.1 days	JUN 22°/5° C 71°/42° F 0.0 days
	JUL 22°/5° C 71°/41° F 0.0 days	AUG 22°/5° C 72°/42° F 0.1 days	SEP 23°/6° C 73°/43° F 0.3 days	OCT 23°/6° C 73°/44° F 0.1 days	NOV 23°/7° C 73°/44° F 0.2 days	DEC 23°/8° C 73°/46° F 1.6 days

HOTEL

CIRQA's unique Arequipenean character and original volcanic rock architecture—dating back to the city's founding in 1540—has withstood the test of time. Today, CIRQA is applauded for its astounding design and architecture, which combined with contemporary nuances, make up the soul of the property. The eleven rooms, some of which have restored high-vaulted ceilings, encircle the main terraza and patio. On the second floor, El Techo de CIRQA overlooks surrounding neighbourhoods and showcases the city's volcanoes.

HOTEL FACILITIES

- 11 rooms in three categories
- Salón: dining room and sitting area
- Terraza
- Rooftop: "El Techo de CIRQA"
- Patio with heated plunge pool
- Massage room

SERVICES

Available only to guests

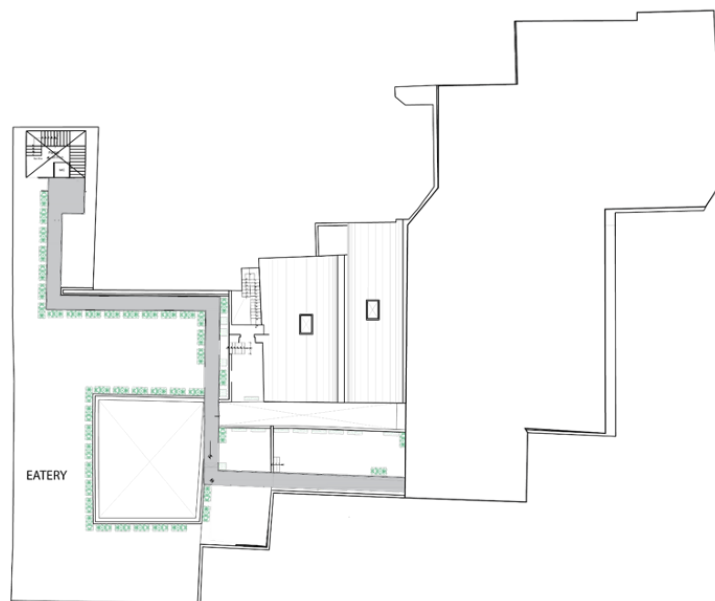
- In-room check-in
- 24-hour on-site concierge
- Wi-Fi
- Massage services
- Salón (dining room) and Rooftop: for the use of guests or those with prior reservation

HOTEL FLOORPLAN

1st floor: Parador



2nd floor: El Techo de CIRQA



OUR KITCHEN

Arequipa's gastronomy is known for its diverse use of local ingredients and its varied flavours and spices. Similarly, CIRQA's cuisine is inspired by the taste of Arequipenean countryside picanterias, captivating the essence of the region and its classic dishes. CIRQA's seasonal menu, curated by Maria Fé García, focuses on simplicity and truthfulness to the local terroir.

SALÓN & TERRAZA

Breakfast, lunch, and dinner are served in the Salón & the Terraza.

The contemporary Salón combines a casual sitting area with a monastic dining room and a large fireplace. Its décor is complemented by long tables and carefully selected tableware that create an organic aesthetic and tranquil ambiance. The Terraza offers an open space sitting and dining area with a comfortable feel and fire pits. Both are available for guests or walk-ins who have made prior reservations.

EL TECHO DE CIRQA (*ROOFTOP*)

The Parador's new rooftop experience, El Techo de CIRQA, was inspired by old Picanterias. Its particular design resembles the structure of the first Arequipenean road-stops, where travellers from all around would gather to drink and eat traditional food before continuing on to their destinations.

The casual ambiance of "El Techo de CIRQA" offers stunning views of Arequipa's volcanoes and the surrounding neighbourhoods—great for sundowners.

ROOMS

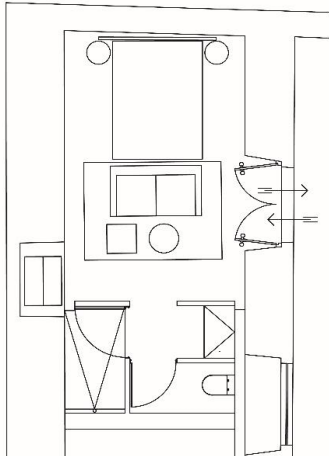
The Parador accommodates eleven rooms, centred around the main terraza and patio. Each room at the Parador is a timeless homage to the ancient monastery chambers and features its own unique characteristics.

The rooms have custom design finishings and tailor-made furniture and interiors. All include a Smart TV with DirecTV and Netflix, air-conditioning, a wireless speaker, organic amenities, and a complimentary snacks-and-drinks hamper.

ROOM SERVICES

Available only to guests

- Room service
- Turn-down service and housekeeping three times a day
- Complimentary ironing and shoe shine service



> CLAUSTRO (2)

19.2 - 20.8m² (206 - 223 sq. ft.)

An intimate and cosy refuge that offers all the essentials while resembling the authentic dimensions and feel of the original monk's chambers, updated with modern comforts.

- Queen Bed
- Walk-in shower
- Separate toilet
- Organic CIRQA toiletries
- Reading chair

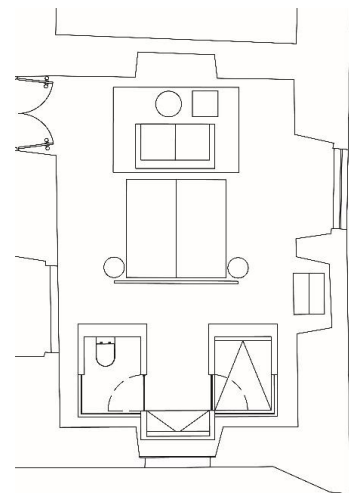
> Referential sketches

APOSENTO (5) <

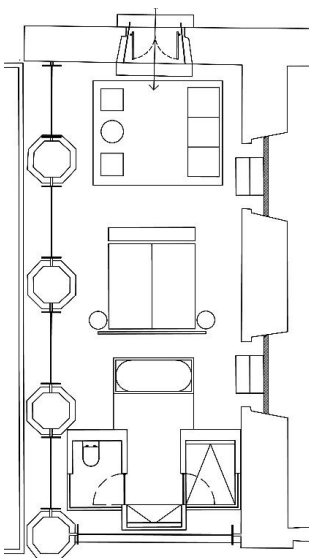
31.5-36.3m² (339 - 390 sq. ft)

These rooms have its own distinct personality and each of them honours its heritage. No one is like the other. They are all ample and feature high ceilings and a personal reading area.

- 2 Twin beds or 1 King bed
- Walk-in shower
- Separate toilet
- Organic CIRQA toiletries
- Personal reading area



> Referential sketches



> BÓVEDA (4)

39.9 - 49.7 m² (429 - 534 sq. ft.)

Magnificent and spacious, with original high-vaulted ceilings that recall ancient Parador times. Each boasts a stand-alone bathtub and a private sitting area.

- 2 Twin beds or 1 King bed
- Stand-alone bathtub
- Walk-in shower
- Separate toilet
- Organic CIRQA toiletries
- Private sitting area

> Referential sketch

BOARD BASES

Our rooms are available on two board bases:

HALF BOARD

Per room, per night

- Room
- Breakfast
- Lunch or dinner
- Complimentary snacks and drinks hamper
- Afternoon tea
- Welcome drink

All excursions, activities, and transfers can be booked for an additional cost

FULLY INCLUSIVE PLUS

Per person, per night

- Room
- Breakfast, lunch, and dinner
- Complimentary snacks and drinks hamper
- Afternoon tea
- Welcome drink & afternoon cocktail
- Airport transfers

Excursions: Several short excursions, two half days or one full day in Arequipa and surroundings or a discovery transfer to Titilaka.

Excursions <u>included</u> in Fully Inclusive Plus	
<i>Short Excursions</i>	<ul style="list-style-type: none"> ● Santa Catalina ● Santa Teresa ● Cathedral Museum ● Juanita's Sanctuary (Santuarios Andinos Museum) ● Sachaca Viewpoint ● Mario Vargas Llosa Museum ● Sillar Quarries (Añashuayco & Culebrillas)
<i>Combined Excursions</i>	<ul style="list-style-type: none"> ● Colonial Arequipa ● Barrios around Chili ● Monasteries of Arequipa
<i>Full-day Excursions</i>	<ul style="list-style-type: none"> ● Scenic Drive to Titilaka
<i>Special Activities</i>	Not included, additional cost
<i>Transfers</i>	<ul style="list-style-type: none"> ● To and from the airport ● To and from the train station

Excursions Summary	Description	Duration		
		1-3 hrs.	4-6 hrs.	7-10 hrs.
SHORT EXCURSIONS				
● Santa Catalina	Perhaps the most photogenic convent in Peru, this 16th century convent is a labyrinth of multicoloured streets, courtyards and chambers.	2		
● Santa Teresa	Albeit smaller lesser-known than Santa Catalina, Santa Teresa it is just as exquisitely beautiful thanks to a stunning collection of colonial religious art from the 17th and 18th centuries.	1		
● Cathedral Museum	The grand white cathedral is the symbol of the city. Inside, a small museum showcases fine religious items and gives you access to a bewitching view of the main square.	1		
● Santuarios Andinos Museum (Mummy Juanita)	The Museum of Andean Sanctuaries is focused predominantly around Mummy Juanita. Believed to be the victim of ritual sacrifice, this young girl's mummified body was found at Mountain Ampato's peak about 70 kilometres from Arequipa.	1		
● Sachaca Panorama	The Sachaca observatory tower, located in a small hillside barrio on the edge of the campiña, amazes you with a 360° view over Arequipa and its surrounding volcanoes.	2		
● Mario Vargas Llosa Museum	The native house of Peru's most celebrated author and winner of the Nobel Prize for Literature in 2010, has been turned into a Museum honouring his life and work. Over the course of 1.5 hours holograms and videos will tell you all about his life, influences, politics and literature.	2.5		
● Sillar Quarries (Añashuayco & Culebrillas)	In the Añashuayco valley quarrymen extract and shape the typical white volcanic stone that give Arequipa its distinctive architectural style. Culebrillas Canyon is a lesser-known quarry where enigmatic petroglyphs dating from over 1000 years ago can be spotted.	3		

COMBINED EXCURSIONS				
<ul style="list-style-type: none"> Colonial Arequipa 	A half day walk to explore the historical centre of Arequipa, declared a World Heritage Site by UNESCO, guided by a local friend. Starting on the Plaza de Armas, we'll pass by the San Camilo market, cloister of la Compañía, San Francisco street and square, and the charming barrio of San Lázaro.		4	
<ul style="list-style-type: none"> Barrios around Chili 	We'll leave the historic centre of Arequipa and cross the Chili River to explore the charming neighbourhood of Yanahuara and the Carmen Alto panorama to enjoy splendid views of volcanoes and ancient terraced fields. This excursion is a mix of short drives and easy walks.		2.5	
<ul style="list-style-type: none"> Arequipa's Monasteries 	With its centuries-old cathedrals and many archaeological museums, Arequipa is jam-packed with history and culture. Some of the most popular sites to see in Arequipa are the Santa Catalina Monastery and the Santa Teresa Convent and the Claustros de la Compañía with its breath-taking colourful chapel.		4	
FULL DAY EXCURSIONS				
<ul style="list-style-type: none"> Volcanes, Vicuñas y Salares 	A full day drive through the beautiful highlands of Arequipa. Most of the day is spent at altitude and on unpaved roads. We'll visit the National Salinas y Aguada Blanca, spot vicuñas and guanacos, explore a Stone forest and get close to real-life alpacas and llamas.			8
<ul style="list-style-type: none"> CIRQA ☐ Titilaka 	An all-day scenic discovery drive with several stops across the high-altitude plains and the Salinas and Aguada Blanca National Reserve to our Titilaka Lodge spotting vicuñas, guanacos and flamingos on the way.			8
OVERNIGHT EXCURSIONS (1 or 2 nights)				
<ul style="list-style-type: none"> CIRQA ☐ Colca ☐ CIRQA/Titilaka 	<p>Driving alongside volcanoes Misti and Chachani, this 5-hour drive enters the Salinas and Aguada Blanca National Reserve to finally descend into the canyon itself.</p> <p>The following morning, we'll head out at dawn to and drive for 1.5 hours to spot the magnificent condors soaring in the thermal winds. After a</p>			X

	<p>hearty lunch, we'll continue our journey back to Arequipa (or to Titilaka), stopping at several quaint colonial-era villages along the way.</p> <p>Following the same itinerary as the two-day excursion, the three-day excursion offers several different options to further explore the valley as well as another tasty lunch.</p> <p><i>Tailor-made excursion, please contact us for further details and packages.</i></p>			
SPECIAL ACTIVITIES at an additional cost				
<ul style="list-style-type: none"> Mountain Biking 	With stunning views and a wide selection of dedicated itineraries, Arequipa is a great place for mountain biking for both beginners and experts. Various half-day biking options are available to suit different aptitudes.		3	
<ul style="list-style-type: none"> Rafting 	Enjoy an exciting river rafting trip just 20 minutes from the centre of Arequipa where the Chili river runs through the magnificent Chilina valley. The routes are beginner (class II), intermediate (class III rapids) or advanced level (Class IV).	3		
<ul style="list-style-type: none"> Hiking 	Only 15 minutes outside of Arequipa's city centre are some of Peru's best hikes. Surrounded by stunning natural landscapes, we'll enjoy a walk through the terraced fields of the Chilina Valley.	2		
TRANSFERS				
<ul style="list-style-type: none"> Airport or Train station 	Airport and train station transfers are included as a complimentary service in our Fully Inclusive Plus base and as an additional service in our Half Board Base. Our private vehicles will get you safely to your destination with mini amenities and outstanding service to enjoy along the way.	1		
<ul style="list-style-type: none"> Colca 	If you are eager to explore Colca Canyon, our private transport can get you there in the most comfortable way possible.		4	
<ul style="list-style-type: none"> Lake Titicaca 	If you are looking for private transport to Puno, CIRQA offers safe and pleasant transfers to Lake Titicaca.			6

APPENDIX: ROOM CHART

Room #	Room Category	Area (m ²)	Area (Sq ft)	Bed	Bathroom	Other
1	Bóveda	40-50m ²	429-534 sq. ft.	2 Twin or King	<ul style="list-style-type: none"> • Bathtub • Walk-in shower • Separate toilet • Organic CIRQA toiletries 	<ul style="list-style-type: none"> • 2 nightstands • 2 coat racks • Air conditioning • TV 55" • Private sitting area
2	Aposento	32-36m ²	339-390 sq. ft.	2 Twin or King	<ul style="list-style-type: none"> • Walk-in shower • Separate toilet • Organic CIRQA toiletries 	<ul style="list-style-type: none"> • Personal reading area • Air conditioning • TV 49" • 2 nightstands • Coat rack
3	Aposento	32-36m ²	339-390 sq. ft.	2 Twin or King	<ul style="list-style-type: none"> • Walk-in shower • Separate toilet • Organic CIRQA toiletries 	<ul style="list-style-type: none"> • Personal reading area • Air conditioning • TV 49" • 2 nightstands • Coat rack
4	Bóveda	40-50m ²	429-534 sq. ft.	2 Twin or King	<ul style="list-style-type: none"> • Bathtub • Walk-in shower • Separate toilet • Organic CIRQA toiletries 	<ul style="list-style-type: none"> • Private sitting area • Air conditioning • TV 55" • 2 nightstands • 2 coat racks
5	Aposento	32-36m ²	339-390 sq. ft.	2 Twin or King	<ul style="list-style-type: none"> • Walk-in shower • Separate toilet • Organic CIRQA toiletries 	<ul style="list-style-type: none"> • Personal reading area • Air conditioning • TV 49" • 2 nightstands • Coat rack
6	Aposento	32-36m ²	339-390 sq. ft.	2 Twin or King	<ul style="list-style-type: none"> • Walk-in shower • Separate toilet • Organic CIRQA toiletries 	<ul style="list-style-type: none"> • Personal reading area • Air conditioning • TV 49" • 2 nightstands • Coat rack
7	Aposento	32-36m ²	339-390 sq. ft.	2 Twin or King	<ul style="list-style-type: none"> • Walk-in shower • Separate toilet • Organic CIRQA toiletries 	<ul style="list-style-type: none"> • Personal reading area • Air conditioning • TV 49" • 2 nightstands • Coat rack
8	Claustro	19-21 m ²	206-223 sq. ft.	Queen	<ul style="list-style-type: none"> • Walk-in shower • Separate toilet 	<ul style="list-style-type: none"> • Reading chair • Air conditioning

					<ul style="list-style-type: none"> • Organic CIRQA toiletries 	<ul style="list-style-type: none"> • TV 43" • 2 nightstands • Coat rack
9	Claustro	19-21 m ²	206-223 sq. ft.	Queen	<ul style="list-style-type: none"> • Walk-in shower • Separate toilet • Organic CIRQA toiletries 	<ul style="list-style-type: none"> • Reading chair • Air conditioning • TV 43" • 2 nightstands • Coat rack
10	Bóveda	40-50m ²	429-534 sq. ft.	2 Twin or King	<ul style="list-style-type: none"> • Bathtub • Walk-in shower • Separate toilet • Organic CIRQA toiletries 	<ul style="list-style-type: none"> • Private sitting area • Air conditioning • TV 55" • 2 nightstands • 2 coat racks
11	Bóveda	40-50m ²	429-534 sq. ft.	2 Twin or King	<ul style="list-style-type: none"> • Bathtub • Walk-in shower • Separate toilet • Organic CIRQA toiletries 	<ul style="list-style-type: none"> • Private sitting area • Air conditioning • TV 55" • 2 nightstands • 2 coat racks

reservas@andean.travel


+51 1 700 5106


www.CIRQA.pe

Marketing Tools

<http://www.andean.travel/info>

Social Media

 CirqaArequipa

 Cirqa_Arequipa

by Andean