

LODGE – FACT SHEET

Lion Sands & The Reserve Pg1 | Weather Pg2 | Architectural Layouts Pg3 | Reference Tables Pg9

Lion Sands Ivory Lodge | Tel: +27 (0)87 980 4228 | Email: res@lionsands.com

Lion Sands River Lodge | Tel: +27 (0)13 735 5000 | Email: res@lionsands.com

Lion Sands Tinga Lodge | Tel: +27 (0)13 735 8400 | Email: res@lionsands.com

Lion Sands Narina Lodge | Tel: +27 (0)13 735 8100 | Email: res@lionsands.com

MORE Family Collection - Head Office/Reservations | Tel: +27 (0)11 880 9992 | Email: res@more.co.za

www.more.co.za

Unique Selling Points

Lion Sands is the only private game reserve rooted in both the Sabi Sand Game Reserve and Kruger National Park • Lion Sands Kruger National Park is one of only seven private park concessions, and protects 5 000ha (12 500ac) of pristine wilderness, as well as sites of cultural and historical significance • Lion Sands is family owned and operated by the fourth-generation More Family – our grandfather was one of the founders of the Sabi Sand Game Reserve (Sabi Sand Wildtuin) established in 1948, and instilled a legacy of community and conservation • Lion Sands, fed by the perennial Sabie River, conserves an extraordinary abundance of wildlife, and its four luxury riverside lodges – Ivory, River, Tinga, and Narina – are ideally located for spotting animals coming down to the water to drink • All four lodges are within 12km (7mi) of Skukuza Airport • The reserve offers a unique programme of activities for guests to tailor-make their stay, including the iconic Lion Sands Treehouse experiences (Chalkley Treehouse, Kingston Treehouse, and Tinyeleti Treehouse)

About the Lodges

Ivory Lodge: On the Sabi Sand side of the reserve, the contemporary-style lodge is built of concrete, timber, glass, and steel to meld into the riverscape. Its eight one-bedroom Villas and the two-bedroom Fish Eagle Villa are peaceful refuges – each with a plunge pool and relaxation areas. The self-contained Fish Eagle Villa also incorporates a spa and gym, and comes with a personal chef, field guide, and open safari vehicle for a tailor-made family/friend safari experience. A guest spa is set away from the main lodge and Villas.

River Lodge: On the Sabi Sand side of the reserve, River offers a chic design interpretation of the traditional safari lodge, with contemporary décor and limited walls allowing a flow between interior and exterior. Its individual eight Luxury Rooms, six Superior Luxury Rooms, and four River Suites (each with a private plunge pool) are set along a path to reveal splendid river views, and make for an intimate safari experience. A guest pool is located next to the main lodge area.

Tinga Lodge: On the Kruger Park side of the reserve, Tinga is a sophisticated take on the colonial-style lodge, capturing the romance of the pioneer era while providing considerable more comfort. Nine Suites and the two-bedroom Hi'Nkweni Villa occupy private spots along the river, and each has a viewing deck and pool, in addition to the main lodge area. Hi'Nkweni also comes with its own butler, field guide, and open safari vehicle for a more exclusive bush experience.

Narina Lodge: On the Kruger Park side of the reserve, the lodge, perched on stilts amongst a canopy of 100-year-old trees, reflects its surrounds with organic chic décor, while its open design creates an air of relaxation. The main lodge connects via raised wooden walkways to a spa sala and nine separate Suites. Each is built to afford complete privacy in a wilderness where guests can watch the animals come down to the water from their pool and deck, as well as bed and bath.

About Lion Sands Treehouses

Million-star Chalkley and Kingston (on the Sabi Sand side) and Tinyeleti (on the Kruger Park side) are the ultimate bush bedrooms. Here romantics, adventurers, and solitude seekers alike can discover the magic of a night out in Africa – in complete luxury. Guests arrive at sunset to a picnic dinner, spend the dusk hours watching animals wander past (at a safe distance), and fall asleep counting shooting stars. And they can rest easy knowing a field guide is always on radio call should they feel they need assistance.

Location

Lion Sands Ivory Lodge and River Lodge: are located in the south of the private Sabi Sand Game Reserve, which protects 65 000ha (160 600ac) of, arguably, Africa's most pristine Big Five territory.

GPS co-ordinates: Ivory Lodge 24°58'24.1"S | 31°31'46.5"E; River Lodge 24°58'16.9"S | 31°31'55.4"E

Lion Sands Tinga Lodge and Narina Lodge: are situated in the south of the Kruger National Park which, covering nearly two million hectares, is home to more mammal species than any other game reserve on the continent.

GPS co-ordinates: Narina Lodge 24°57'43.41"S | 31°33'46.51"E; Tinga Lodge 24°58'16.94"S | 31°35'0.54"E

Weather

The average maximum temperatures range from 24°C/75°F in July to 33°C/90°F in January, with the lowest average minimum occurring in July at 8°C/46°F • The average annual rainfall is 350mm (14in), most of which occurs during midsummer (December – February) • Rain is usually in the form of thundershowers, where a downpour is experienced, very seldom lasting longer than a few hours

Best Time to Travel

A year-round safari destination • The animals in Lion Sands Game Reserve are non-migratory, and variation in the safari experience is season-, rather than location-, related • The best period for birdwatching is from October to April

Health Info: Malaria

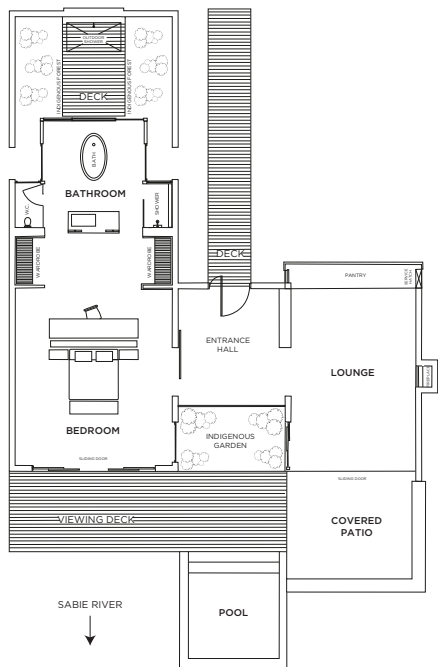
Lion Sands Game Reserve is located in a low-risk malaria area, and we urge guests to consult their doctors about malarial prophylactics before visiting.

Ivory Lodge Layout



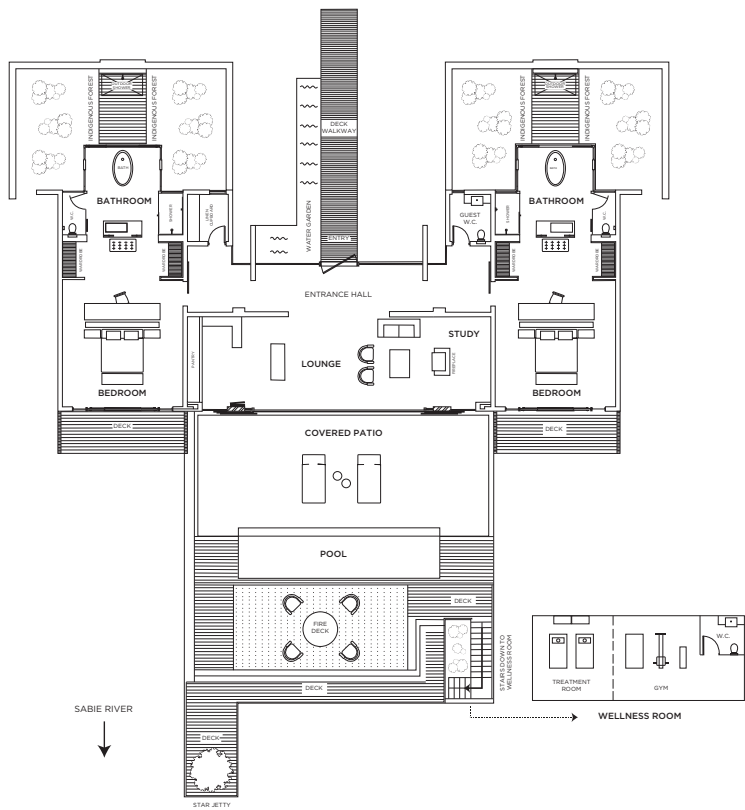
One-Bedroom Villa Layout

Suite - 145m² | 1 560ft²
 Viewing deck - 28m² | 300ft²
 Total - 173m² | 1 862ft²

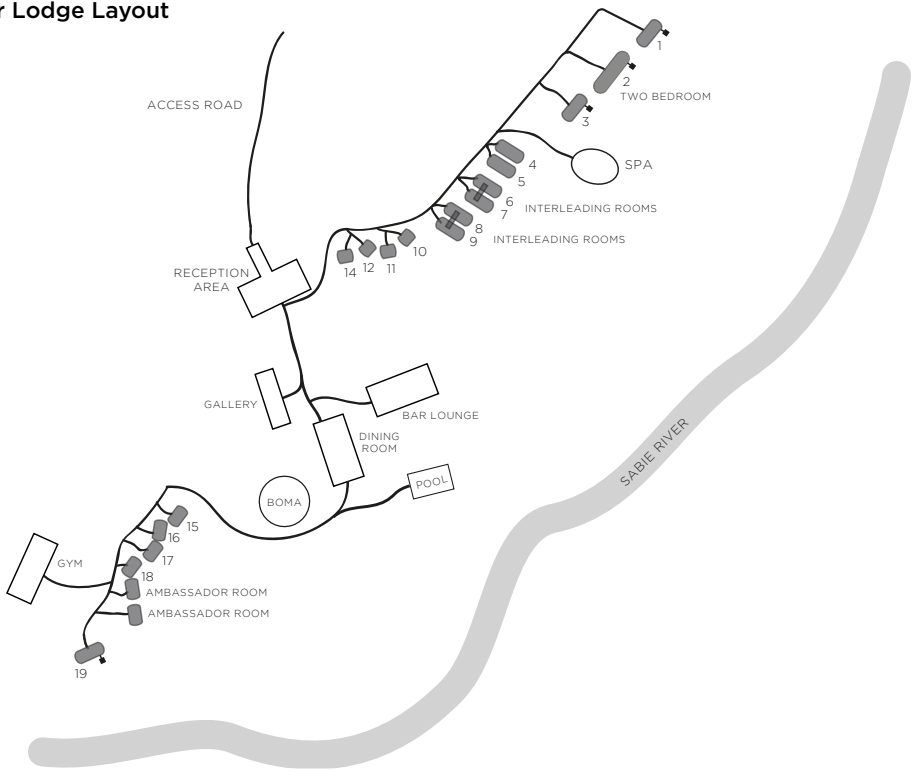


Two-Bedroom Villa Layout (Fish Eagle Villa)

Suite - 325m² | 3 500ft²
 Viewing deck - 55m² | 600ft²
 Wellness room - 60m² | 645ft²
 Total - 440m² | 4 736ft²

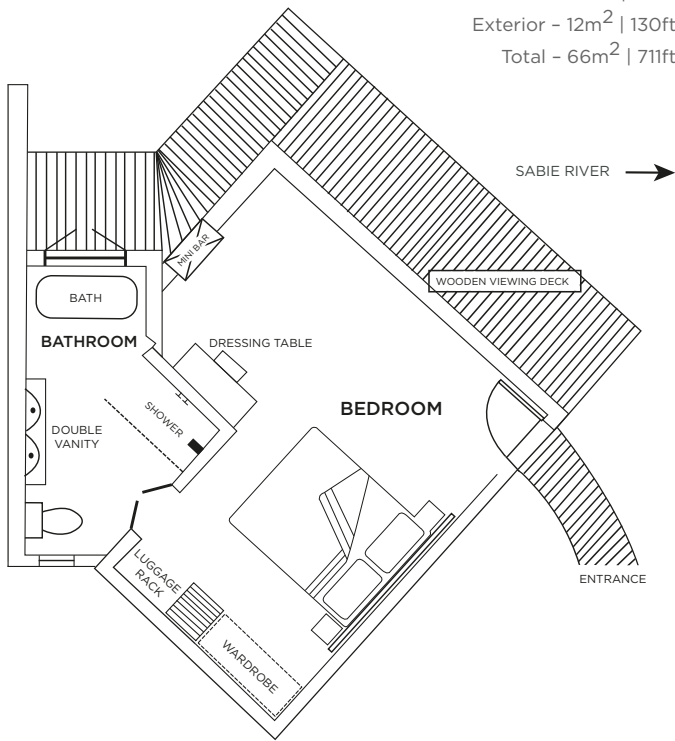


River Lodge Layout



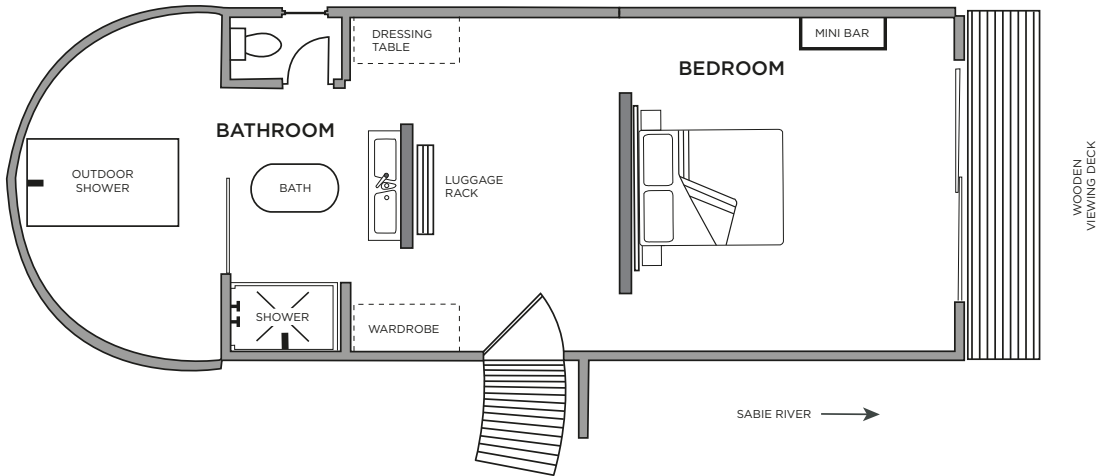
Luxury Room Layout

Room - 54m² | 581ft²
Exterior - 12m² | 130ft²
Total - 66m² | 711ft²



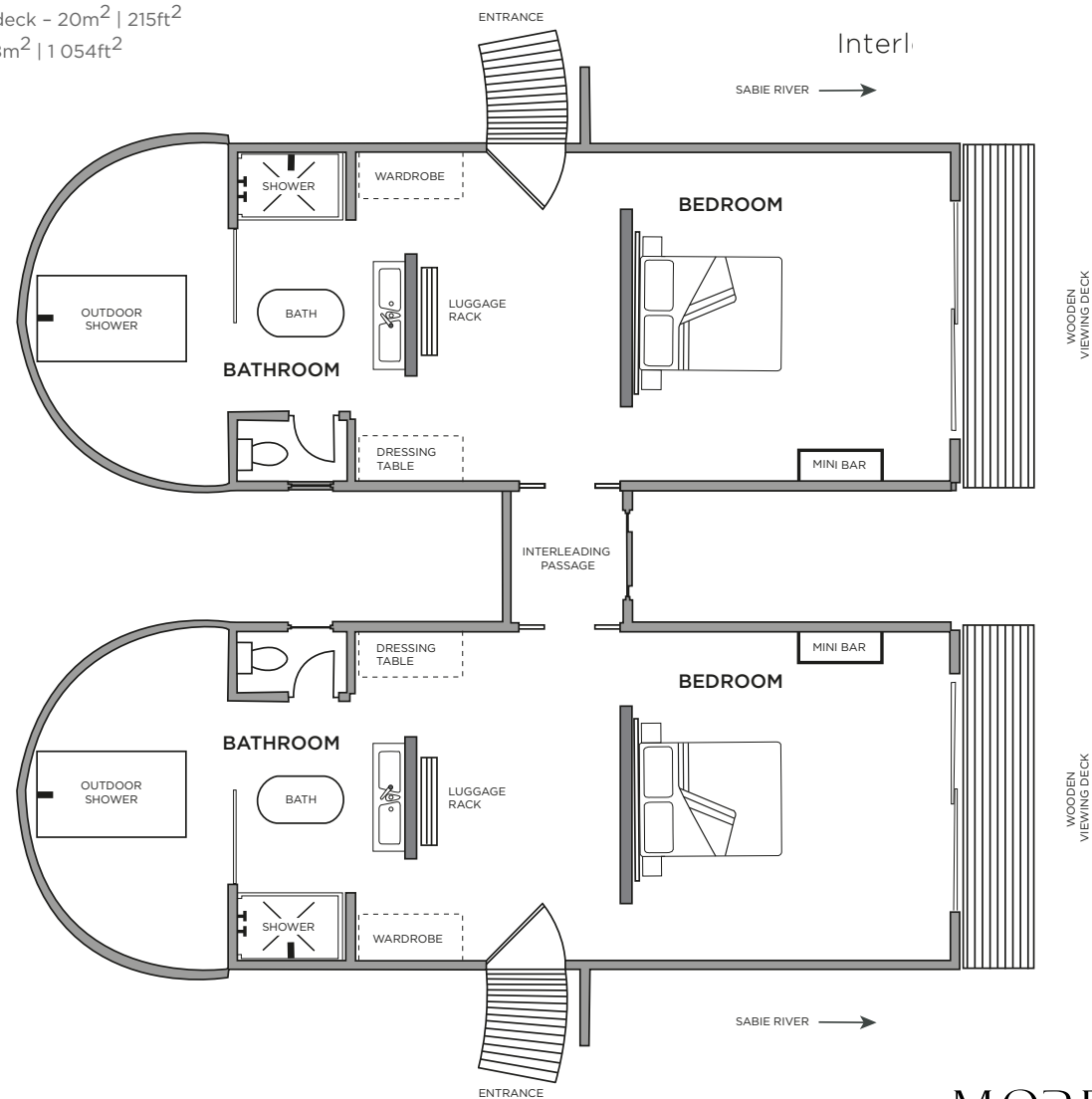
Superior Luxury Room Layout

Room - 78m² | 839ft²
Viewing deck - 20m² | 215ft²
Total - 98m² | 1 054ft²



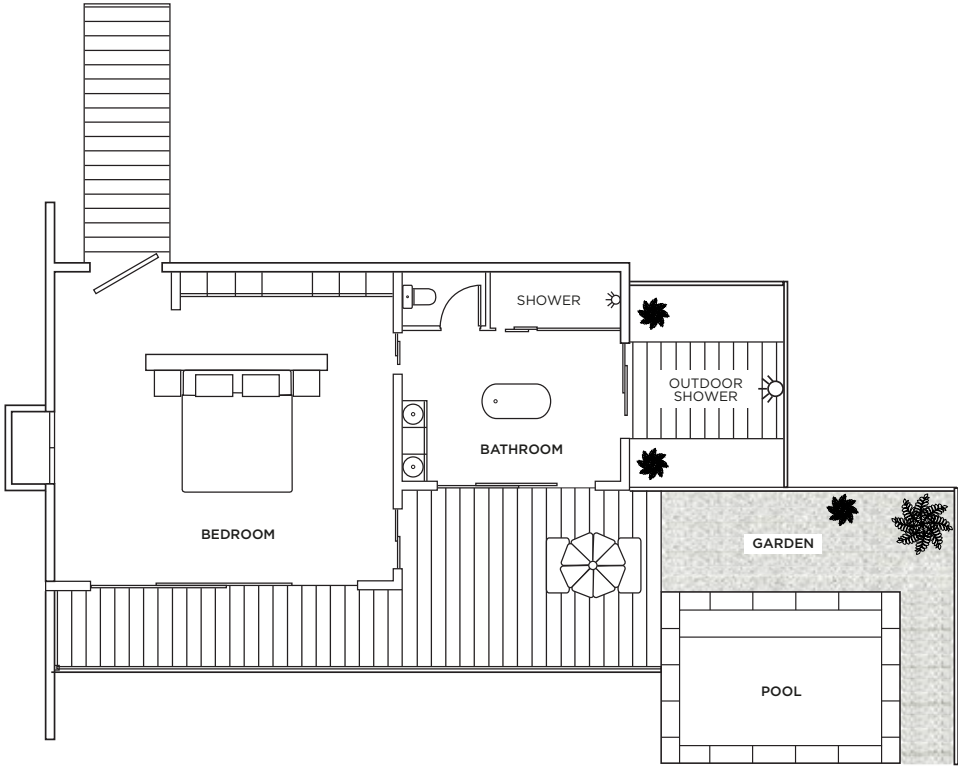
Interleading Superior Luxury Room Layout

Room - 78m² | 839ft²
Viewing deck - 20m² | 215ft²
Total - 98m² | 1 054ft²



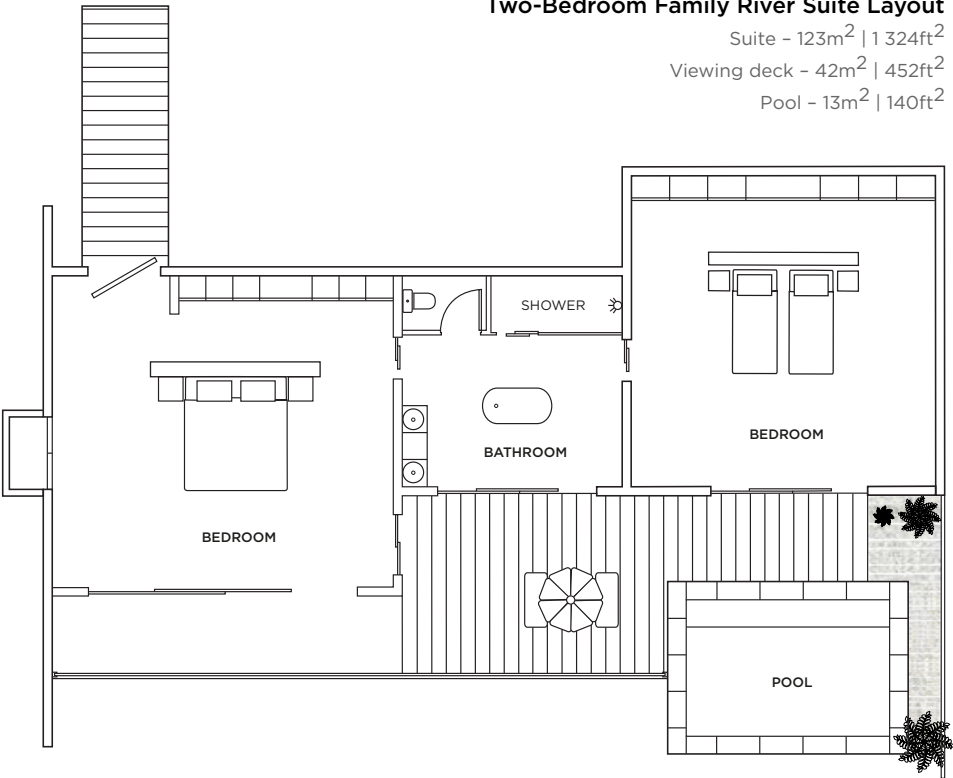
One-Bedroom River Suite Layout

Suite - 82m² | 883ft²
Outside shower - 12m² | 129ft²
Viewing deck - 35m² | 377ft²
Pool - 13m² | 140ft²

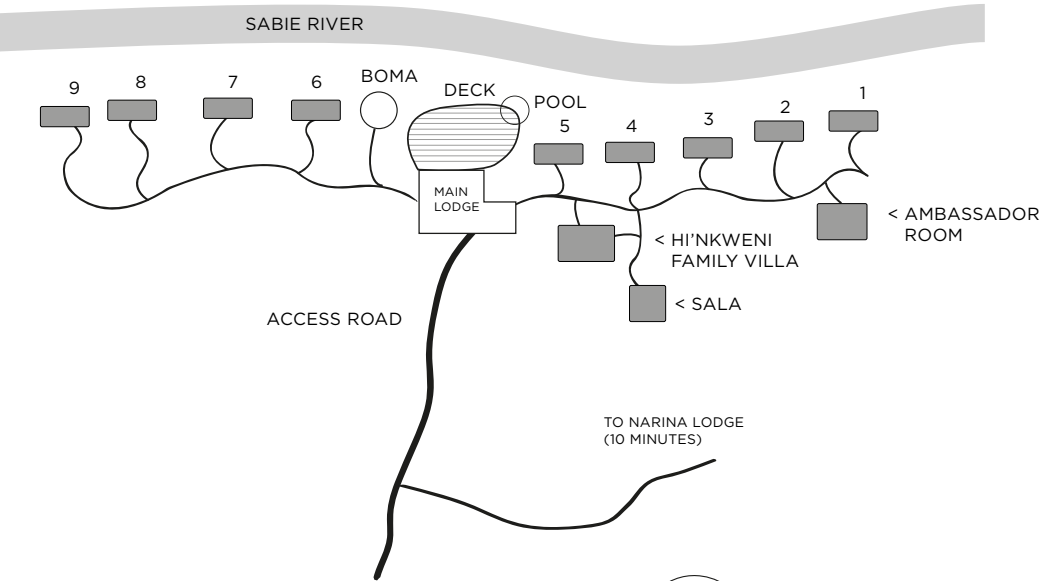


Two-Bedroom Family River Suite Layout

Suite - 123m² | 1 324ft²
Viewing deck - 42m² | 452ft²
Pool - 13m² | 140ft²

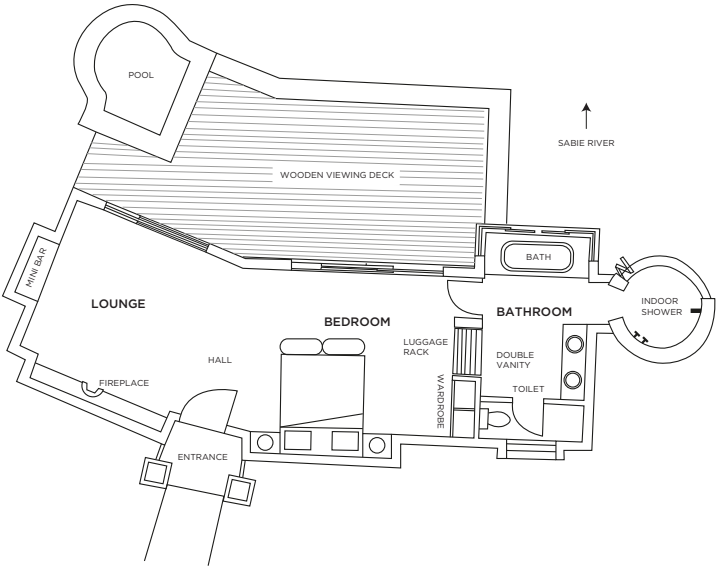


Tinga Lodge Layout



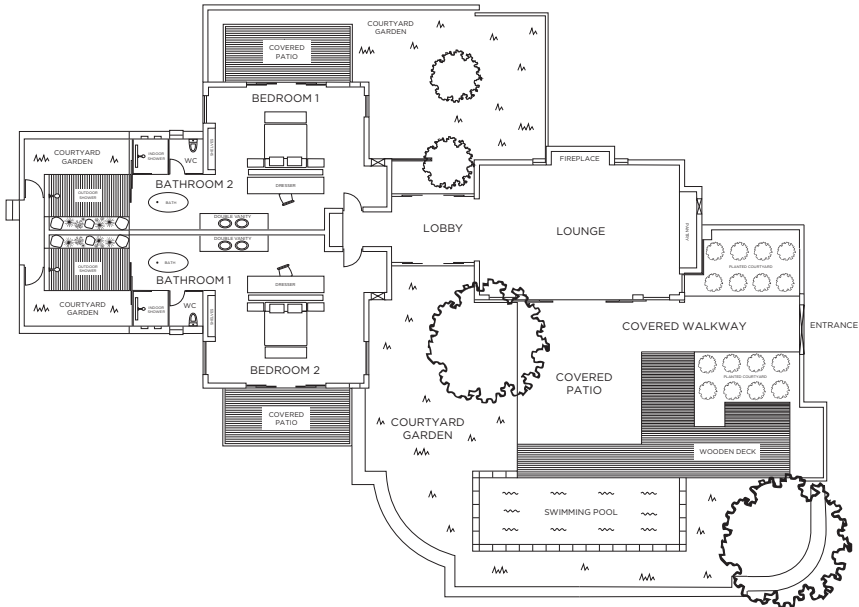
Suite Layout

Interior - 80m² | 860ft²
Exterior - 45m² | 484ft²
Total - 125m² | 1 344ft²

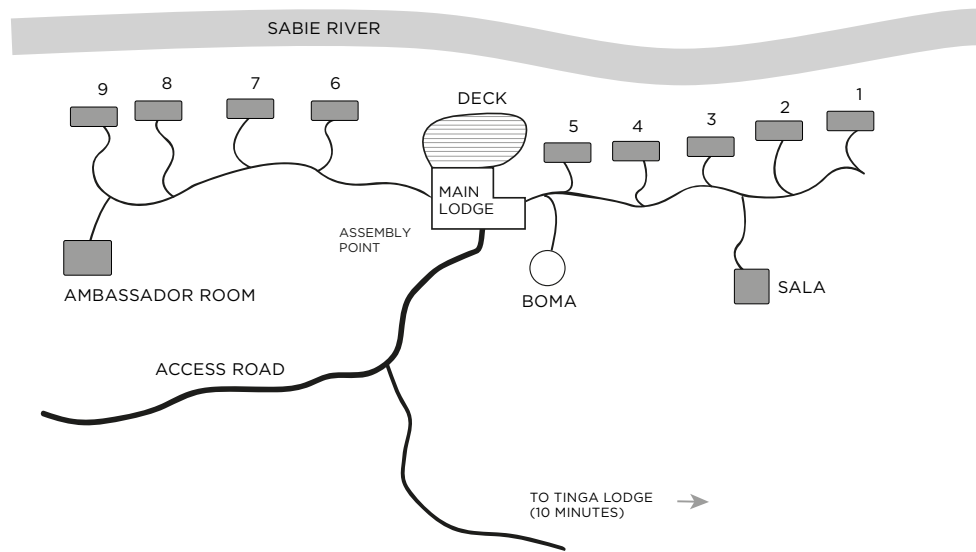


Two-Bedroom Villa Layout
(Hi'Nkweni Villa)

Interior - 220m² | 2 368ft²
Exterior - 125m² | 1 345ft²
Total - 345m² | 3 714ft²

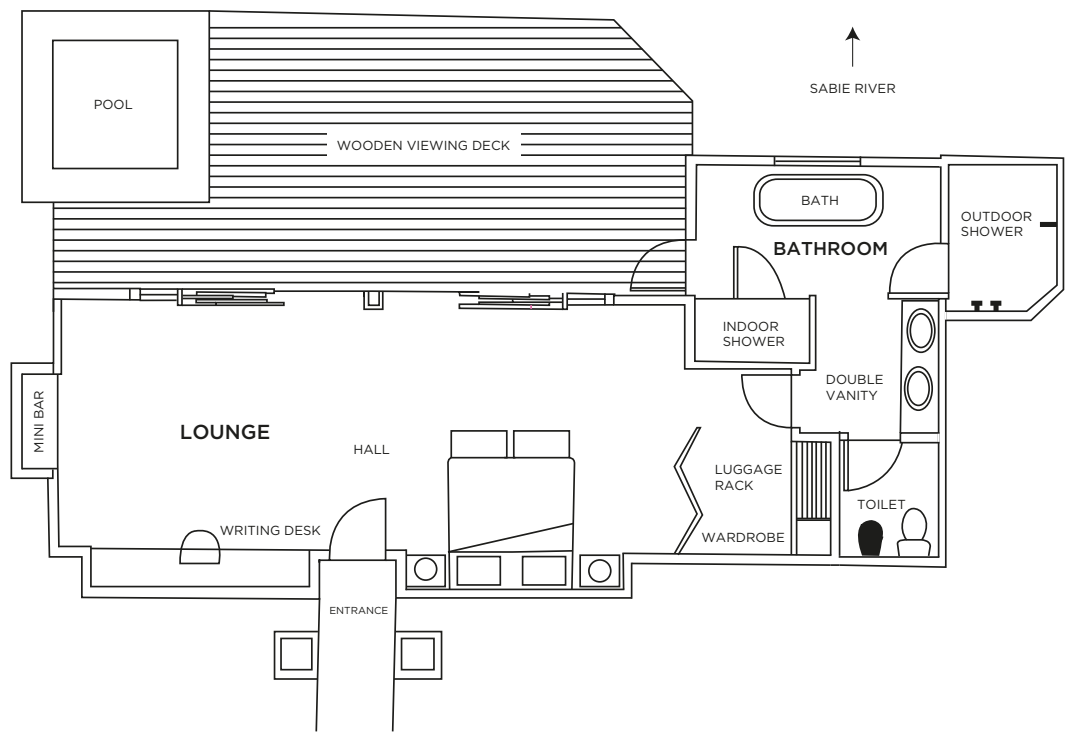


Narina Lodge Layout



Suite Layout

Interior - 80m² | 860ft²
Exterior - 45m² | 484ft²
Total - 125m² | 1 344ft²



Reference Table – Ivory Lodge and River Lodge

Reference	Ivory Lodge	River Lodge
Suites	8 Villas 1 Family Villa (Fish Eagle Villa)	18 Rooms: 8 Luxury (L) 6 Superior Luxury (SL) – incl. 2 sets of interleading rooms 4 River Suites (RS) – incl. 1 Family River Suite (FRS)
Size of suites	Villas: 145m ² /1 560ft ² Fish Eagle Villa: 325m ² /3 500ft ²	L: 66m ² /710ft ² SL: 98m ² /1 054ft ² RS: 129m ² /1 388ft ² FRS: 165m ² /1 776ft ²
Guests	20	38
Children	Yes: Villas (>10 years) Fish Eagle Villa (all ages)	Yes (>10 years)
Children's rate	10 to 15 years (50% if sharing with an adult)	10 to 15 years (50% if sharing with an adult)
Children on safari	Private game drives (all ages) Normal game drives (>10 years)	Yes (>10 years)
Children activities	Yes	Yes
Childminding	Yes (additional cost)	Yes (additional cost)
Triple rooms	Fish Eagle Villa (x2 rooms)	1 Luxury Room
Single traveller supplement	Yes (50% supplement)	Yes (50% supplement)
Double bed convertible to twin	Yes	Yes
Treehouses	Chalkley Treehouse and Kingston Treehouse	
Central guest pool	No	Yes
Private plunge pool	Yes	Yes (River Suites)
Air conditioning	Yes	Yes
Fireplace	Yes	Yes (guest areas)
Room fans	Yes	Yes
Mosquito nets	Yes	Yes
Outdoor shower	Yes	Yes (Superior Luxury and River Suites)
Indoor showers	Yes	Yes
Separate WC	Yes	Yes (Luxury Rooms and River Suites)
Free Wi-Fi	Yes (all areas)	Yes (all areas)
Satellite television	No	Yes (guest area)
In-room telephone	Yes (direct dial)	Yes (direct dial)
Mobile coverage	Fair: 40% (MTN/Vodacom)	Fair: 40% (MTN/Vodacom)
In-room safe	Yes	Yes
Personal bars	Yes	Yes
Hairdryers	Yes	Yes
Laundry	Yes (included)	Yes (additional cost)
Conference facilities	No	Yes
Spa facilities	Yes	Yes
Gym facilities	Yes	Yes
Suitable for disabled guests	No	Yes (with assistance)
Distance between rooms	20–25m/60–75ft	0–8m/0–25ft
Closest airport	Skukuza Airport (25 minutes away)	Skukuza Airport (25 minutes away)
Helipad	Yes (24°58'2.22"S 31°31'30.20"E)	
Guests per open safari vehicle	6	6
Private open safari vehicle	Fish Eagle Villa (included) Villas (additional cost, subject to availability)	No
Languages of field rangers	English, Afrikaans, Shangaan, Zulu	English, Afrikaans, Shangaan
Gratuities recommendation	ZAR750* per guest per day *Specific allocations clarified on request	
Kosher dining	Yes (with prior notice, at an additional cost)	Yes (with prior notice, at an additional cost)
Power	220V AC	220V AC
Credit cards	Mastercard, Visa, Amex, Diners	Mastercard, Visa, Amex, Diners
Cheques	Not accepted	Not accepted

Reference Table – Tinga Lodge and Narina Lodge

Reference	Tinga Lodge	Narina Lodge
Suites	9 Suites Family Villa (Hi’Nkweni Villa)	9 Suites
Size of suites	Suites: 125m ² /1 344ft ² Hi’Nkweni Villa: 220m ² /2 368ft ²	125m ² /1 344ft ²
Guests	24	18
Children	Yes: Suites (>10 years) Hi’Nkweni Villa (all ages)	Yes (>10 years)
Children’s rate	10 to 15 years (50% if sharing with an adult)	10 to 15 years (50% if sharing with an adult)
Children on safari	Yes	Yes
Children activities	Yes	Yes
Childminding	Yes (additional cost)	Yes (additional cost)
Triple rooms	Hi’Nkweni Villa (x2 rooms)	2 Suites
Single traveller supplement	Yes (50% supplement)	Yes (50% supplement)
Double bed convertible to twin	Yes	Yes
Treehouse	Tinyeleti Treehouse	
Central guest pool	Yes	No
Private plunge pool	Yes	Yes
Air conditioning	Yes	Yes
Fireplace	Yes (guest areas) Hi’Nkweni Villa	Yes (guest areas)
Room fans	Yes	Yes
Mosquito nets	Yes	Yes
Outdoor shower	Yes	Yes
Indoor showers	Yes	Yes
Separate WC	Yes	Yes
Free Wi-Fi	Yes (all areas)	Yes (all areas)
Satellite television	Yes (guest area)	Yes (guest area)
In-room telephone	Yes (direct dial)	Yes (direct dial)
Mobile coverage	Good: 80% (MTN/Vodacom)	Fair: 40% (MTN/Vodacom)
In-room safe	Yes	Yes
Personal bars	Yes	Yes
Hairdryers	Yes	Yes
Laundry	Yes (additional cost)	Yes (additional cost)
Conference facilities	No	No
Spa facilities	Yes	Yes
Gym facilities	No	No
Suitable for disabled guests	Yes (with assistance)	No
Distance between rooms	10–15m/33–49ft	10–15m/33–49ft
Closest airport	Skukuza Airport (5 minutes away)	Skukuza Airport (15 minutes away)
Helipad	Yes (24°58’7.64”S 31°35’33.92”E)	
Guests per open safari vehicle	6	6
Private open safari vehicle	Hi’Nkweni Villa (included) Suites (additional cost, subject to availability)	Suites (additional cost, subject to availability)
Languages of field rangers	English, Afrikaans, Shangaan, Zulu	English, Afrikaans, Shangaan, Zulu
Gratuity recommendation	ZAR750* per guest per day *Specific allocations clarified on request	
Kosher dining	Yes (with prior notice, at an additional cost)	Yes (with prior notice, at an additional cost)
Power	220V AC	220V AC
Credit cards	Mastercard, Visa, Amex, Diners	Mastercard, Visa, Amex, Diners
Cheques	Not accepted	Not accepted

Reference Table – Treehouse Circuit

Reference	Chalkley Treehouse	Kingston Treehouse	Tinyeleti Treehouse
Location	Sabi Sand side	Sabi Sand side	Kruger Park side
Number of guests	2 adults	2 adults and 2 children (10 to 14 years)	2 adults and 2 children (10 to 14 years)
Stargazing	Yes, countless	Yes, countless	Yes, countless
Shower	Yes	Yes	Yes
Vanity	Single	Double	Double
Radio comms and cell signal	Yes	Yes	Yes
Wi-Fi	You must be joking!	You must be joking!	You must be joking!
Safety features	Single door, secure stairway, two-way radio contact	Single door, drawbridge, two-way radio contact	Double safety door, two-way radio contact
Season	Year-round (weather dependant)	Year-round (not weather dependant)	Year-round (weather dependant)
View	Open savannah	Treetops	Sabie River
Size in decking	40m ² /430ft ²	60m ² /645ft ²	50m ² /540ft ²
Height above ground	8m/26ft	10m/33ft	8m/26ft
Dining	Gourmet picnic basket and selected drinks from our beverage list	Gourmet picnic basket and selected drinks from our beverage list	Gourmet picnic basket and selected drinks from our beverage list