



GORILLA FOREST LODGE

AN A&K SANCTUARY

Bwindi Impenetrable National Park, Uganda



Gorilla Forest Lodge was designed to blend into the forest

A sublime sanctuary for primate trekking in Uganda's gorilla heartland

Reopened in June 2025 after a complete overhaul, Gorilla Forest Lodge is an unrivalled base for trekking to see the mighty primates in their natural habitat. More than half of the world's 1,000 or so wild mountain gorillas live in Uganda's Bwindi Impenetrable National Park – and guests at Gorilla Forest Lodge have the chance to see these elusive creatures on their treks. The 10-villa lodge was eco-consciously redesigned to seamlessly fit in with its jungly surroundings; guests staying here can rest assured that they are helping to support and conserve the local community and wildlife through A&K Philanthropy projects.

Six Reasons to Choose Gorilla Forest Lodge



- 01
- 02
- 03
- 04
- 05
- 06



Gorilla sightings await

This is the best-located lodge in Bwindi for gorilla trekking – they’ve even been known to visit the lodge.



Expert guides lead the forest treks

A crack team of highly experienced rangers lead you to find these elusive creatures.



Newly revamped interiors at the lodge

The reimagined lodge sets the gold standard for eco luxury in Uganda, thanks to its beautiful, environmentally conscious design.



A&K Philanthropy funds local projects

Every stay helps conserve the endangered mountain gorilla, Bwindi’s local communities, and the forest itself.



Ugandan hospitality is legendary

The Gorilla Forest Lodge family of staff are renowned for being warm, welcoming, and making every guest’s experience special.



The spa therapist uses organic products

After a day’s trekking in the steamy rainforest, the superb spa offers reviving all-natural treatments.

The Lodge



In a spectacular location overlooking the lush jungle canopy, newly revamped Gorilla Forest Lodge is a place that inspires superlatives: the most beautiful and most luxurious stay in Bwindi Impenetrable National Park, and – crucially – the best located for gorilla trekking.

Rare birds, colorful butterflies and monkeys scampering through the trees are a regular sight from the private viewing decks of the 10 villas, set apart in the forest. The indoor-outdoor lounge bar and restaurant space overlooking the vibrant forest is equally lively; here in the heart of the lodge, the resident musician plucks African folk songs on a harp while guests swap gorilla tales and clink sundowners around the campfire.

The expert therapist offers rejuvenating massages and facials using all-natural Healing Earth products in the intimate spa, soundtracked by the calls of the jungle, and the Explorer's Lounge is stocked with maps and books on the flora, fauna and culture of Bwindi. Alongside all this, Gorilla Forest Lodge's eco-conscious design and community-first approach to conservation mean it is a standard bearer for responsible travel in the region.

Hanging chairs for rainforest views



"Natural materials and an earthy palette of terracotta and clay root the lodge in its Ugandan setting."



The lounge is the heart of this sanctuary

The Lodge



ECO-CONSCIOUS DESIGN

From the water treatment system to the banana-leaf wallpaper and beaded chandeliers created by women from the local village, sustainability was at the core of the lodge’s 2025 revamp.

BAR & RESTAURANT

This is the social heart of the lodge, where guests gather to enjoy canapés and cocktails accompanied by local musicians, followed by sumptuous three-course meals.

EXPLORER’S LOUNGE

When nature is all around, any rustle of a leaf could mean an animal sighting, so the Leica binoculars supplied to guests will come in handy, as will the interactive maps in the Explorer’s Lounge, and the spotting scopes on the decks.

SPA AND WELLNESS

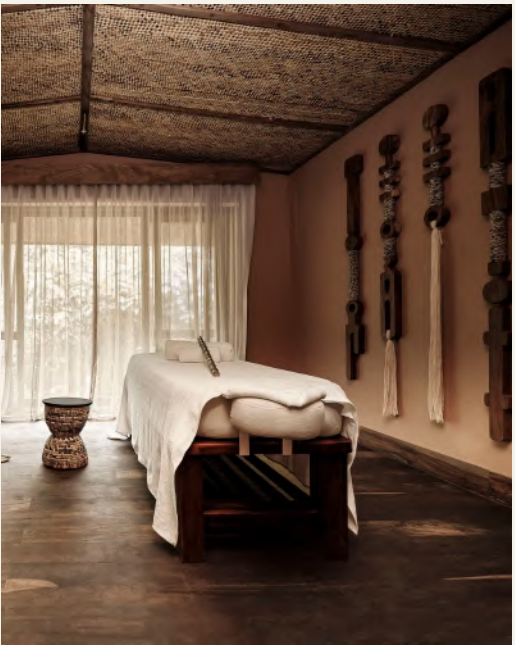
Local materials are showcased at the intimate spa, where the brilliant therapist administers deeply restorative massages and rejuvenating facials using natural, organic products made in Africa by Healing Earth.

BUSH BOUTIQUE

The curated selection of African-crafted items in the on-site Bush Boutique gives guests the opportunity to take home more than just memories from this extraordinary corner of Uganda - perhaps hand-painted T-shirts or bags in vibrant-colored fabrics echoing the kaleidoscopic local markets.



CLOCKWISE FROM LEFT
The gorilla families are multi-generational
Cosy corners await back at the lodge
The spa showcases local materials



The Lodge



The firepit is a daily gathering spot

Find African crafts in the Bush Boutique

| | |
|---------------------------|---|
| GPS Coordinates | GPS 0° 59' 20.98" S, 29° 36' 48.54" E |
| Open Year Round | Yes |
| Number of Rooms | 10 |
| Maximum Number of Guests | 20 |
| Child Policy | Children aged 6 and over are welcome. Children under 15 must share with an adult. Minimum age for gorilla trekking is 15 years. |
| Guide/Pilot Accommodation | Yes; 3 |
| Wheelchair Accessible | No |
| Power Supply | Main grid power with inverter and backup generator |
| WiFi Available | Yes, in all areas |
| Binoculars Provided | Yes; Leica binoculars provided for every guest |
| Lodge Fenced | No |
| Credit Cards Accepted | Visa, MasterCard |
| Currencies Accepted | USD, Pound, and Euro |
| Spa/Treatment Room | Yes |

The Villas



Local building techniques and earthy tones of green, terracotta and clay make the 10 standalone villas feel as if they've always been part of the leafy Bwindi landscape. The sustainable redesign in 2025 made use of natural materials – banana-leaf ceilings and wooden floors – and the full-length windows enhance the feeling of a luxury jungle cocoon. The sculptural hanging chairs on the private veranda are the best nook for spotting monkeys with the Leica binoculars provided.

Take in jungle views from the bathroom



"Set apart in the forest, the 10 villas have a romantic, cocooning feel."



Each villa's kingsize four-poster is canopied



VILLA | SLEEPS 2 | 105 SQM

A personal attendant is on hand for every villa, where a canopied kingsize four-poster gives a romantic feel. Each villa has a minibar, desk and safe, plus an ensuite bathroom featuring a large bathtub with jungle views.

| | |
|----------------------------------|---|
| Room Size | 105m2 |
| Bed Configuration (King or Twin) | All rooms can be converted to a king or twins |
| Triple Rooms Available | Yes; subject to availability |
| Mini Bar | Yes |
| Tea and Coffee Station | Yes |
| Air Conditioning | No |
| Overhead Fan | No |
| Mosquito Net | Yes |
| Plug Type | Type G Plug, USB and USB Type C |
| Bath | Yes |
| Indoor Shower | Yes |
| Outdoor Shower | No |
| Hairdryer | Yes |
| Bidet | Yes |



The elegant restaurant is a sociable hub

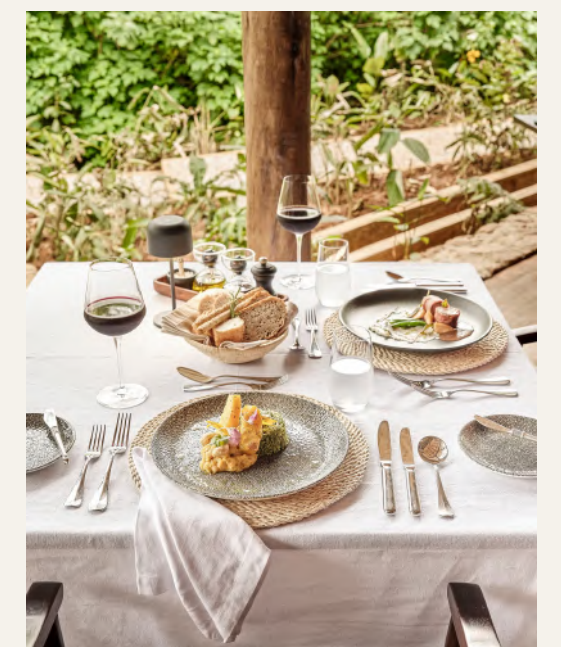
Food & Drink



Canapés and cocktails in the boma, accompanied by local musicians playing folk tunes, set the tone for sumptuous, sociable evenings. The brilliant kitchen team at Gorilla Forest Lodge are adept at introducing guests to the flavors of Uganda, with refined takes on street-food favorites such as rolex (“rolled eggs” wrapped in chapati). These are served alongside international classics, with a choice of delicious three-course meals championing local ingredients, amid the hum of the restaurant. All food and drink is complimentary, including premium wines and spirits.

- A continental or English breakfast is served in the restaurant before the day’s activities.
- Lunch is enjoyed on the terrace, or picnic lunches are packed for guests on gorilla treks.
- Snacks and afternoon treats keep energy levels up on action-filled days of wildlife spotting.
- Back at the lodge as night falls, canapés and cocktails soundtracked by local musicians and a three-course dinner of local flavors await.

Refined dining with Ugandan flavors

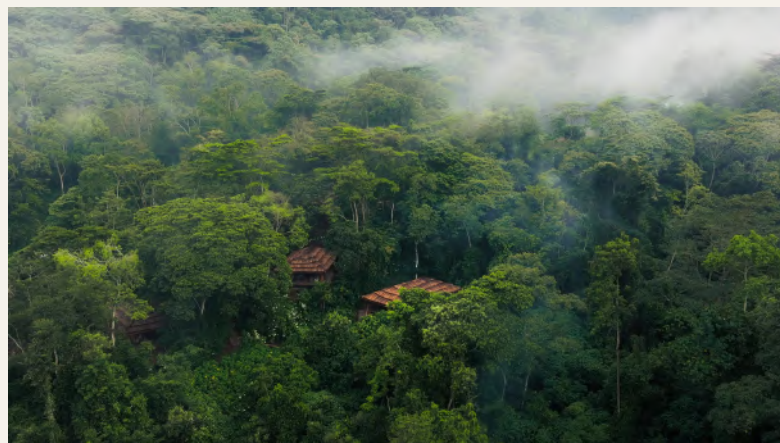


Lodge Location



The treetops of Bwindi Impenetrable Forest echo with the cacophonous calls of a dozen or so species of primate – from the resonant roars of colobus monkeys to the hoots of chimpanzees. As with all of land-locked Uganda’s pristine national parks, Bwindi is low on crowds and big on drama, with Africa’s largest population of habituated mountain gorillas being the stars of the show. Once embroiled in civil unrest, this extraordinarily lush southwest corner of the country is one of the great success stories of African conservation. The dense, mist-shrouded foliage harbors more than 500 of these magnificent, critically endangered creatures (around half the world’s remaining population) – from powerful silverbacks to babies clinging with glue-like grips to their mothers.

Mist rises from the lush jungle



As a base from which to trek to see their family dynamics play out, Gorilla Forest Lodge cannot be beaten. It makes the ‘impenetrable’ notion of the park’s title not only possible but guaranteed when it comes to wildlife spotting – gorillas have even been known to visit the lodge. Yet nothing beats the pulse-quickening thrill of setting off to hike across farmland and up through the steamy forest to spend a life-changing hour in the company of these surprisingly tender kings of the jungle. Known as the pearl of Africa, Uganda isn’t short on spectacular natural resources – and Bwindi is surely the most precious of them all.



Gorilla Forest Lodge makes exploring the 'impenetrable forest' possible

Getting There



The adventure begins in a propeller plane



Entebbe Airport to Kihhi Airstrip

1-hour 45-minute flight



Kihhi Airstrip to the Lodge

2-hour drive

Please note, luggage restriction for light aircraft is 20kg/33lbs per person in a soft-sided bag, including hand-luggage.

Experiences



With the world's largest population of habituated mountain gorillas on the doorstep, there's no doubt once-in-a-lifetime treks to see them will be top of the list for most guests. But other highlights are waiting to be discovered: guided nature walks through the incredibly biodiverse Bwindi Impenetrable Forest; interactive community visits, including time spent with the Batwa, the traditional guardians of the forest; and the chance to visit several A&K Philanthropy projects — from a school to a bicycle enterprise. Back at base, heavenly treatments in the spa and reading in the Explorer's Lounge give the option of much-needed downtime after exhilarating days.



Gorilla trekking ticks many bucket lists

GORILLA TREKKING

As the mist clears from the jungle canopy each morning, eight visitors set off to see a gorilla group deep in the forest. For many guests at Gorilla Forest Lodge, this physically taxing yet hugely rewarding experience is the hand-down highlight of their stay.



Get up close to the incredible flora and fauna

FOREST WALKS

As well as the headline act gorillas, biodiverse Bwindi is home to other rare and unique species – from giant forest hogs to red-tailed monkeys. Three-hour walks on the Munyaga Waterfall Trail led by expert rangers take guests into the thick of it.



Bwindi is home to many rare bird species

BIRDING WALKS

More than 350 bird species flutter about in the treetops of Bwindi, including some of the rarest on the planet. Set out to spot the elusive African green broadbill and the African emerald cuckoo on two-to-three-hour walks with the local expert.

Experiences



With the world's largest population of habituated mountain gorillas on the doorstep, there's no doubt once-in-a-lifetime treks to see them will be top of the list for most guests. But other highlights are waiting to be discovered: guided nature walks through the incredibly biodiverse Bwindi Impenetrable Forest; interactive community visits, including time spent with the Batwa, the traditional guardians of the forest; and the chance to visit several A&K Philanthropy projects — from a school to a bicycle enterprise. Back at base, heavenly treatments in the spa and reading in the Explorer's Lounge give the option of much-needed downtime after exhilarating days.



Guests can visit the nursing school

BWINDI COMMUNITY AKP TOURS

Our Bwindi Community Tour includes visits to the Bwindi Women's Bicycle Enterprise and beadmaking workshop, a school and hospital (which have been helped by A&K Philanthropy initiatives), plus opportunities to meet members of the Batwa community – the traditional guardians of the forest.



A performance by the Batwa People

MEET THE BATWA PEOPLE

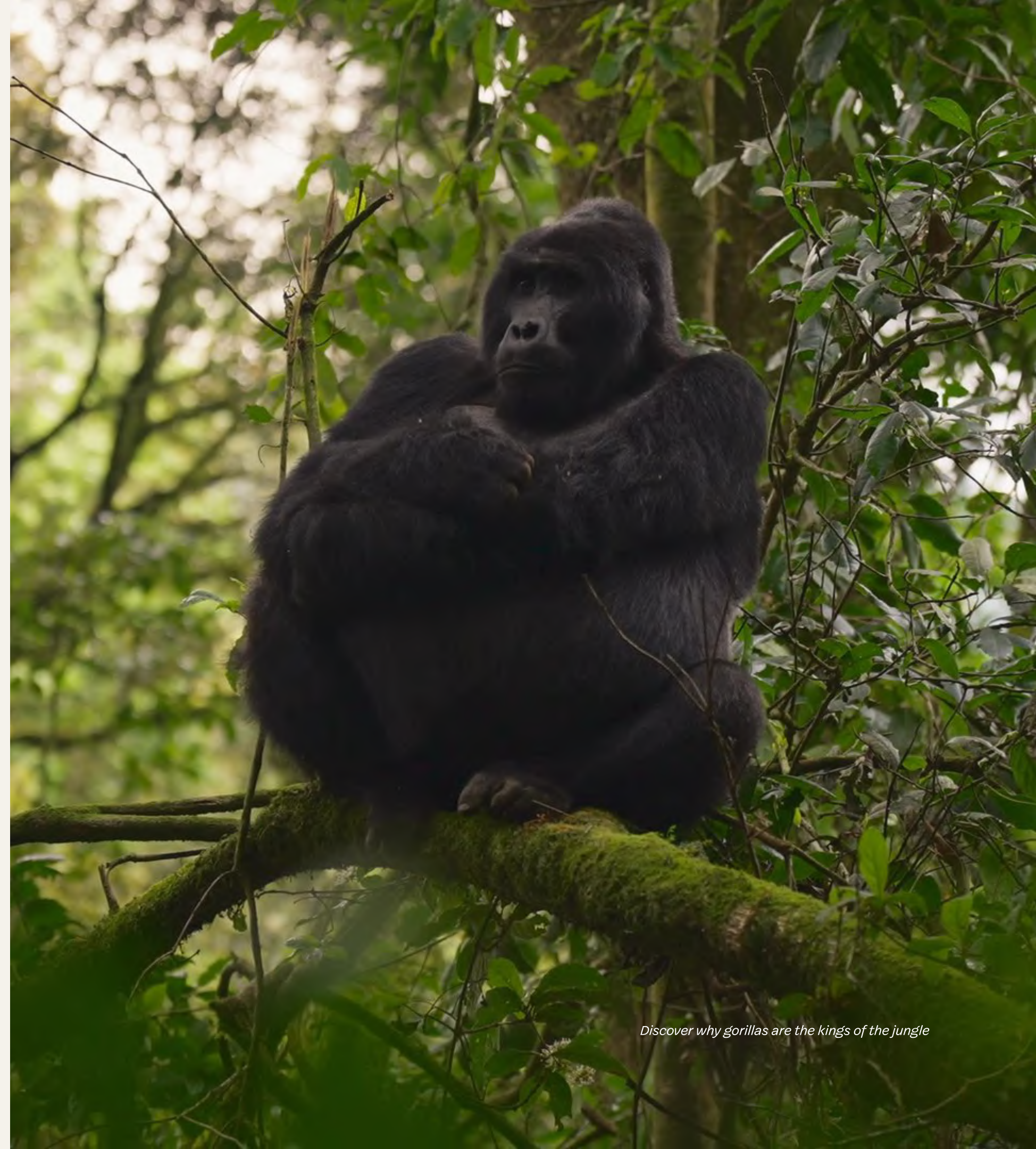
The Batwa People are the oldest inhabitants of the Great Lakes region of Central Africa. This full-day experience offers an opportunity for guests to immerse themselves in their culture, with a forest walk, music performance and a demonstration of traditional hunting and gathering methods.

Wildlife & Nature

Bwindi is home to the greatest concentration of mountain gorillas on earth, which translates to more than 500 of these magnificent creatures – more than half of the world’s population – living in its dense, mist-shrouded forest. Each day a select number of visitors trek to see the 12 habituated mountain gorilla groups, and are allowed to view them for a maximum of one hour.

But the wow-making wildlife encounters don’t stop there: the dense forest, bamboo groves and open glades of Bwindi also harbor giant forest hogs, and 11 species of primate including red-tailed, blue and black-and-white colobus monkeys, baboons and chimpanzees. Guests might spot forest duiker and bush buck antelopes, warthogs, civet cats, some of the more than 350 species of birdlife, including several of the rarest avian species on the planet and 24 that are endemic to the region, plus 200 colour-popping species of butterfly.

Bwindi has kaleidoscopic butterflies



Discover why gorillas are the kings of the jungle

Your Gorilla Forest Lodge Safari



Spending time with the gorillas is a privilege

Days at Gorilla Forest Lodge deliver once-in-a-lifetime adventure as well as serene moments to simply take in the biodiverse surroundings of Bwindi Impenetrable Forest. The lodge's expert team of guides and support staff cleverly choreograph every detail — from potentially life-changing gorilla treks to post-dinner drinks around the fire.

A TYPICAL DAY MIGHT INCLUDE:

- **Wake-up Call** — Enjoy tea or coffee in your villa as the whoops and calls of the forest signal a new day.
- **Breakfast** — A hearty breakfast is served in the restaurant to fuel guests for the adventures ahead.
- **Morning Activity** — Guests setting out on gorilla treks head into the forest to spend time in the company of the rare creatures.
- **Lunch** — Return to the lodge for a delicious lunch on the terrace against the lush forest backdrop.
- **Afternoon Activity** — Forest walks or community visits offer another opportunity to discover the unique landscape and culture of this corner of Uganda.
- **Drinks & Dinner** — Back at base, canapés and cocktails in the boma are accompanied by local musicians, before three-course meals are served in the restaurant.

Your Gorilla Forest Lodge Safari



HONEYMOON, ANNIVERSARIES & SPECIAL OCCASIONS

Romance and luxury are woven into every A&K Sanctuary, but Gorilla Forest Lodge adds an extra sprinkling of magic when it comes to special occasions. From a private dinner around a bonfire by the spa to a petal-strewn bubble bath after a day of gorilla trekking, the team creates once-in-a-lifetime experiences that celebrate a visit to the unique setting of Bwindi Impenetrable Forest.

FAMILIES WITH CHILDREN

We welcome children aged 6 years and above at Gorilla Forest Lodge; and those aged 15 years and younger are required to share with an adult. While the minimum age for gorilla trekking is 15 years, children will be entranced by the sights and sounds of nature – and the unique culture of Bwindi – on forest and bird walks, and on meeting locals as part of the community tours.

INCLUSIONS

- All meals, non-alcoholic and alcoholic beverages (including premium brands)
- Concession fees
- Community walk
- Emergency medical evacuation
- Laundry services

EXCLUSIONS

- Park fees
- Gorilla permits and additional activities
- International and domestic flights, Kihiki airstrip transfers, and any other road transfers
- Travel insurance, boutique purchases, spa treatments, gratuities, and all other items of a personal nature



Evenings are a time to reflect on epic days



Beaded chandeliers are a feature at the lodge

Travel Tips



WHAT TO PACK

Clothing should be cool and comfortable. Greens, browns and khaki coloured clothing are advisable for trekking. We suggest long sleeves and long trousers and for morning and evenings due to mosquitoes and a fleece jacket as it could be cold early mornings. Sturdy and comfortable shoes are essential. Evening dress is 'smart casual', there is no formal wear required. We advise guests to dress in a way they feel most comfortable. The altitude at Bwindi is just over a mile high. Evenings can get chilly, so it is advisable to carry a sweater.

What to wear for Gorilla Trekking:

- It often rains heavily, even in the dry season, so a light raincoat will be useful.
- Strong gloves are of enormous help, as you will be hauling yourself uphill by grabbing the bushes, and often sliding downhill on the seat of your trousers.
- During the trek, wearing a pair of walking trousers or gaiters will prevent cuts and scratches.
- Carry a water-proof plastic bag to wrap your camera and film or memory cards in.
- Accessories: Sunscreen, sunglasses and hats are essential. Good cameras are an absolute must. The lodge provides binoculars, a torch as well as complimentary mosquito repellent and toiletries.

HEALTH

Please discuss health precautions for your travel itinerary with a qualified health professional at least six weeks before departure. We advise all travellers to take precautions against malaria and the yellow fever vaccination is required for guests travelling to Uganda.

MONEY & CREDIT CARDS

All extras can be paid for with Visa, Mastercard, American Express and traveller's cheques. US dollars, British pounds, euros and Ugandan shillings are also accepted; however, change will be given in the local currency.

GRATUITY GUIDELINES

Tipping and gratuities remain entirely at your discretion.

Guides are always on hand





While it’s impossible to predict the weather in this unique pocket of southwestern Uganda, guests might find it helpful to learn how a visit to Gorilla Forest Lodge could differ from one month to the next: from the secret perks of the rainy season to the best time to embark on gorilla trekking.



Bwindi's most famous residents await

DECEMBER–FEBRUARY

As one of Uganda’s “dry” seasons, this is a fantastic time to visit Bwindi Impenetrable Forest – particularly January and February, when relatively drier, cooler weather and clear trails make for more comfortable trekking. Book well ahead for the holiday season.



Cultural immersion is a part of a stay here

MARCH–MAY

More rainfall brings an abundance of life. April is one of the wettest months, when Bwindi’s rainforest is at its most vibrant. Though trails may be muddy, this time of year offers gorilla trekking in a lush environment, with lower visitor numbers.



Cooler temperatures make trekking easier

JUNE–SEPTEMBER

This is prime time for gorilla trekking. Drier days and more comfortable temperatures make for easier trekking conditions from June to August, while the forest is still lush enough for teeming wildlife and great photography opportunities.



Visit the gorillas when there are fewer tourists

OCTOBER–NOVEMBER

The rainforest is rejuvenated after the short rains of October and November, and cooler temperatures make the climate more pleasant. Fewer tourists mean excellent gorilla-trekking, and it’s a great time for birding, with many species visible.

A&K Philanthropy Initiatives in Uganda



A&K Philanthropy set up a bicycle repair shop in Uganda

BUILDING BETTER SCHOOLS IN BWINDI

At Ebenezer Primary School, a 15-minute drive from Gorilla Forest Lodge, AKP has supported the construction of classrooms, administrative buildings and community halls. In the area around Buhoma, we have funded renovations in a number of primary and secondary schools.

SAFE WATER FOR SCHOOLS PROGRAM

This project delivers water filters, via our partner LifeStraw, to remote schools where access to clean water is limited and challenging. AKP has installed LifeStraw filters at seven schools, providing clean water to more than 2,500 children each day.

SCHOOL FEEDING PROGRAM

AKP provides school lunches for an average of 21 cents a day. In Uganda it has constructed 13 school kitchens and feeds more than 4,000 children each day.

BIKE ENTERPRISE PROGRAM

For rural communities in Bwindi, mobility is key. In 2017, AKP set up the bike shop in Uganda, owned by and employing five local women to repair and supply used bicycles to the community.

BEAD ENTERPRISE PROGRAM

In Bwindi, AKP supports the Meraki Women’s Bead Project, a novel project launched in 2024, which employs local women to make unique, hand-crafted jewellery from recycled paper.

BWINDI COMMUNITY HOSPITAL AND NURSING SCHOOL

This private not-for-profit hospital near Gorilla Forest Lodge provides health care to local communities. The nursing school trains a new generation of nurses to work in rural clinics.



A&K SANCTUARY