



## GREAT PLAINS CONSERVATION 2026 RACK CAMP RATES

GP  
RÉSERVE

RELAX &  
CHATEAUX

XP  
EXPLORERS

Rates, booking terms and conditions  
Validity 11 January 2026 - 10 January 2027

Updated : 19 January 2026



# Additions, Amendments & Deletions to the 2026 rates manual include:



GENERAL	DATE	NOTES DETAILS
	June 2025	<ul style="list-style-type: none"> <li>- There is a change in validity at all camps, except Duba Plains Camp, Mara Plains Camp, and ol Donyo Lodge. The applicable validity periods on each camp's page have been updated accordingly. The Special Offers that traditionally commenced on 1 November will now begin on 1 October 2026. The "Stay a Little Longer" special will no longer be applicable from October 2026. The specials grid has been updated accordingly.</li> </ul>
BOTSWANA	DATE	NOTES DETAILS
	August 2025	<ul style="list-style-type: none"> <li>- We have corrected an error on the Helicopter transfer supplement rate between Maun and Selinda.</li> </ul>
	September 2025	<ul style="list-style-type: none"> <li>- The rate for the scheduled fixed wing air transfer between Kasane and Victoria Falls has been reduced, and the relevant page has been updated.</li> </ul>
ZIMBABWE	DATE	NOTES DETAILS
	September 2025	<ul style="list-style-type: none"> <li>- The rate for the scheduled fixed wing air transfer between Victoria Falls and Kasane has been reduced, and the relevant page has been updated.</li> <li>- Mpala Jena announced the addition of a new suite opening on 12 May 2025, increasing the total to four standard guest suites in addition to the two family suites.</li> </ul>
	December 2025	<ul style="list-style-type: none"> <li>- Mpala Jena's additional suite, originally set to open on 12 May 2026, will now open on the 1st of May 2026.</li> <li>- Both 3-bedroom Private Villas at Mpala Jena are now open and welcoming guests.</li> <li>- With the opening of the two brand-new Villas at Mpala Jena, the exclusive-use camp rate has been discontinued for all new reservations. New bookings requiring exclusive use will be quoted and confirmed on an individual basis.</li> </ul>

# Additions, Amendments & Deletions to the 2026 rates manual continued:



KENYA	DATE	NOTES DETAILS
	June 2025	<ul style="list-style-type: none"> <li>- As part of our offering at ol Donyo Lodge from January 2026, we will include a complimentary 15-minute flight in our on-site helicopter, providing an amazing overview of the region, subject to availability.</li> <li>- At the time of confirmation, we will include the contribution to medical evacuation services. This does not replace the requirement for guests to carry comprehensive travel and medical insurance. Each camp page has been updated to reflect this information.</li> </ul>
	July 2025	<ul style="list-style-type: none"> <li>- Located on the northern boundary, with direct access to the Maasai Mara National Reserve, the new Zarama Private is an exclusive-use, six-suite, private safari residence set to open in January 2026. The rates have been added to the rates manual.</li> <li>- New for 2026 – seat rates are now available for the Helicopter Scenic Flights at ol Donyo Lodge.</li> <li>- Confirmation of our minimum child ages is 6 and up for all new reservations. This includes a revision of the minimum age at ol Donyo Lodge from 5 to 6 years.</li> </ul>
	August 2025	<ul style="list-style-type: none"> <li>- We have refined the Helicopter Scenic Flight descriptions to provide greater clarity.</li> </ul>
	October 2025	<ul style="list-style-type: none"> <li>- Following an update to park fees in Kenya by Kenyan Wildlife Services, we have revised the Helicopter Scenic Flights rates page to reflect the new Amboseli excursion park fees.</li> </ul>
	January 2026	<ul style="list-style-type: none"> <li>- Following the soft opening of Zamara Private in December 2025, we are adding some exciting enhancements and refinements to the property. We look forward to welcoming guests from 01 May 2026.</li> <li>- A new dinner transfer service is now available for guests in Nairobi. The rate has been added to our Nairobi Transfer and Touring Rates page.</li> <li>- Helicopter excursions at ol Donyo Lodge are operated predominantly in a Robinson 44 or Robinson 66 and are no longer conducted in a Bell 505.</li> </ul>

# SEASONAL SPECIAL OFFERS

BOTSWANA, ZIMBABWE AND KENYA



GREAT PLAINS CAMP	Stay 4 / Pay 3	Stay 8 / Pay 6	Renew your Vows & Honeymoon Special	Stay 8 / Pay 6: Combining Tembo Plains Camp & Botswana	Heli the Thrillway
BOTSWANA					
- Duba Plains Camp & Duba Plains Suite	01 November - 19 December 2025, 11 January - 14 June 2026, 01 November - 19 December 2026		01 - 20 November 2025, 01 April - 14 June 2026, 01 - 20 November 2026		01 June - 30 September 2026
- Sitatunga Private Island & The Sitatunga Private Island Suite	01 November - 19 December 2025, 11 January - 14 June 2026, 01 October - 19 December 2026		01 - 20 November 2025, 01 April - 14 June 2026, 01 October - 20 November 2026		
- Selinda Camp & Selinda Suite					
- Zarafa Camp & The Dhow Suite at Zarafa					
- Duba Explorers Camp					
- Selinda Explorers Camp					
- Okavango Explorers Camp					n/a
ZIMBABWE					
- Tembo Plains Camp & The Zanji Suite at Tembo Plains	01 April - 20 November 2025, 01 April - 20 November 2026	01 - 20 November 2025, 01 April - 31 May 2026, 01 October - 20 November 2026		01 - 20 November 2025, 01 April - 14 June 2026, 01 October - 20 November 2026	n/a
- Mpala Jena & Mpala Jena Private Villas	01 November - 19 December 2025, 11 January - 31 March 2026, 01 October - 19 December 2026		n/a		
KENYA					
- Mara Nyika Camp & The Sambuk Suite at Mara Nyika	01 November - 19 December 2025, 11 January - 14 June 2026, 01 October - 19 December 2026		n/a		n/a
- Mara Expedition Camp					
- Mara Toto Tree Camp					
- Mara Plains Camp & The Jahazi Suite at Mara Plains	01 November - 19 December 2025, 11 January - 14 June 2026, 01 November - 19 December 2026				
- ol Donyo Lodge					

## GENERAL NOTES

- Offers apply to all standard guest US\$ rate accommodation reservations.
- Free night offers include accommodation only - any park or conservation fees are still applicable.
- International and regional flights are additional.
- Please refer to individual camp pages for minimum stay requirements and details on whether scheduled air transfers are included or excluded.
- Guide rates and private safari vehicle hire rates are additional.
- These offers are stand-alone and cannot be combined with other promotions.

## KENYA CAMP SPECIFIC NOTES:

- Stay 4 / Pay 3: Stay a total of 4 nights at one camp, and only pay for 3 nights - 1 night free.
- Stay 8 / Pay 6: Stay a total of 8 nights, combining 4 nights at one of our Mara-based camps, with 4 nights at ol Donyo Lodge and only pay for 6 nights - 2 nights free.
- Kenya specific special offers are not available at Zamara Private.

## BOTSWANA CAMP SPECIFIC NOTES:

- Stay 4 / Pay 3: Stay a total of 4 nights at one camp, and only pay for 3 nights - 1 night free;
- Stay 8 / Pay 6: Stay a total of 8 nights in Botswana, combining two camps on a 4-night stay each and only pay for 6 nights - 2 nights free!
- The Heli the Thrillway: Stay a total of 6 nights at any two of our Réserve-Collection Camps and receive free inter-camp Helicopter air transfer. Not valid at our Explorer Collection camps.

## RENEW YOUR VOWS & HONEYMOON SPECIAL SPECIFIC NOTES:

- Enjoy 25% off accommodation when spending your honeymoon or renewing your vows at any of our camps. This offer is valid during each camp's Green or Shoulder Season and cannot be combined with other specials. To qualify, guests must provide a marriage certificate dated within six months of the ceremony or be celebrating a 40th (or greater) wedding anniversary. Proof of marriage date must be submitted at the time of the reservation enquiry.

## ZIMBABWE CAMP SPECIFIC NOTES:

- Stay 4 / Pay 3: Stay four consecutive nights at any one of our Zimbabwe camps and only pay for three.
- Stay 8 / Pay 6: Stay eight consecutive nights at any one of the following and only pay for six - 2 nights free: Tembo Plains Camp, The Zanzi Suite at Tembo Plains, Mpala Jena, Mpala Jena Private Villas.
- Stay 8 / Pay 6 combining Tembo Plains Camp and Botswana: Stay a total of eight nights, combining Tembo Plains Camp (Zimbabwe) with any one of our Botswana camps (four nights at each), and only pay for six - 2 nights free!



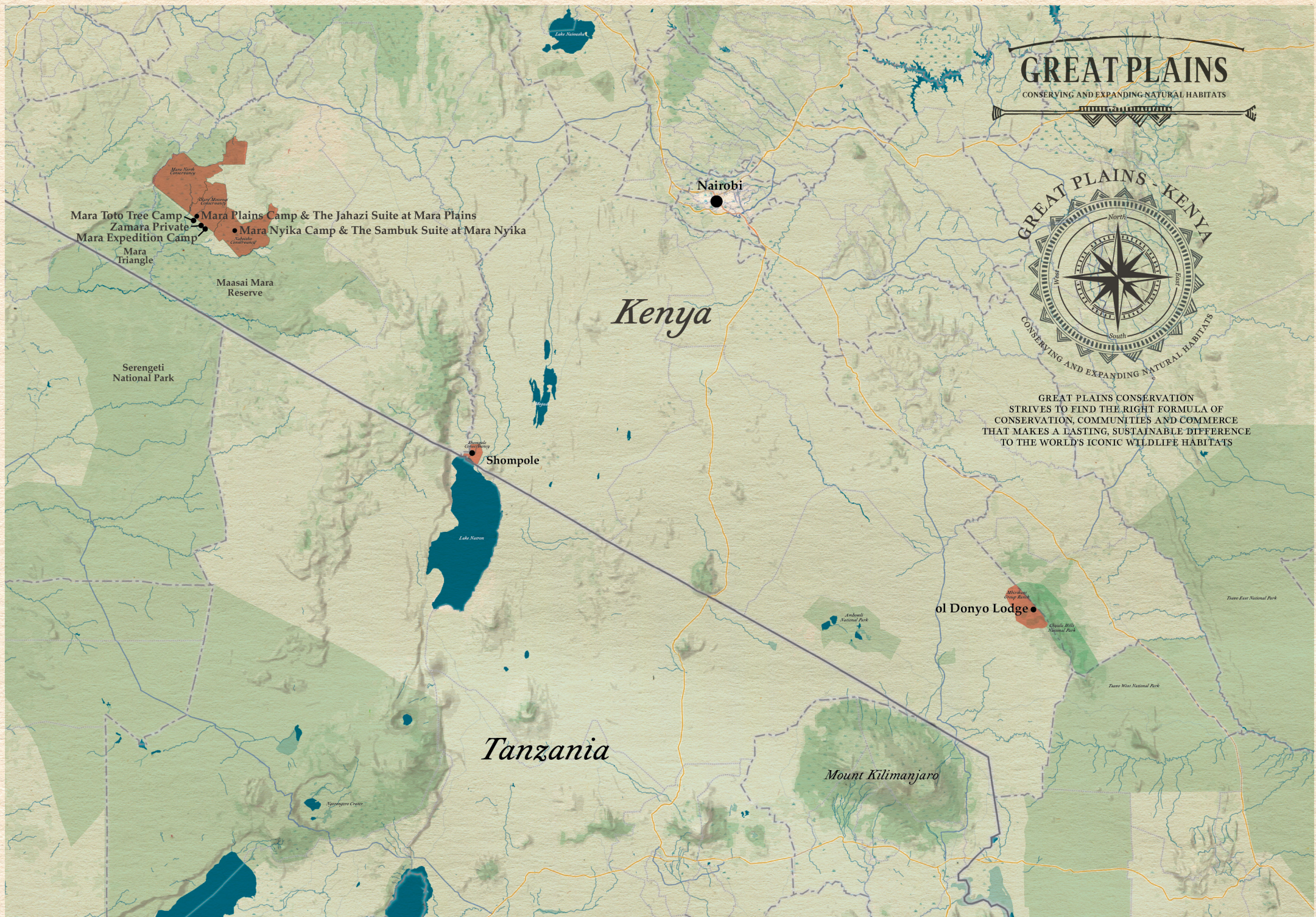
# GREAT PLAINS

CONSERVING AND EXPANDING NATURAL HABITATS

STABILITY • ADAPTABILITY • RESILIENCE



GREAT PLAINS CONSERVATION  
STIVES TO FIND THE RIGHT FORMULA OF  
CONSERVATION, COMMUNITIES AND COMMERCE  
THAT MAKES A LASTING, SUSTAINABLE DIFFERENCE  
TO THE WORLD'S ICONIC WILDLIFE HABITATS



Mara Toto Tree Camp  
Zamara Private  
Mara Expedition Camp  
Mara Triangle  
Mara North Conservancy  
Mara Plains Camp & The Jahazi Suite at Mara Plains  
Mara Nyika Camp & The Sambuk Suite at Mara Nyika  
Maasai Mara Reserve

Shompole

Ol Donyo Lodge

Tanzania

Mount Kilimanjaro



# KENYA | Mara Toto Tree Camp

MAASAI MARA NATIONAL RESERVE



## MARA TOTO TREE CAMP

4 Guest Suites + Pilot / guide tent

11 January - 31 March 2026

01 April - 14 June 2026 &  
01 October - 19 December 2026

15 June - 30 September 2026 &  
20 December 2026 - 10 January 2027

### GUEST SUITES

- US\$ Rack per person per night sharing	\$ 2 320	\$ 1 745	\$ 3 405
- US\$ Rack single supplement*	\$ 1 160	\$ 873	\$ 1 702
- US\$ Rack children sharing with adult rate (6 - 15 years)	\$ 1 160	\$ 873	\$ 1 702

### COMMON CHARGES

- US\$ Nett Pilot/Guide rate per night	\$ 365
- US\$ Nett Private vehicle rate	\$ 980 per vehicle per night
- US\$ Nett Great Plains Foundation Conservation & Community Contribution	\$ 100 per person (of any age) per night

### NOTES

- Fully inclusive of accommodation, scheduled wildlife viewing activities in the Maasai Mara National Reserve and Mara North Conservancy, park fees, all meals, laundry service, return Ol Kiombo airstrip road transfers, non-alcoholic and alcoholic beverages including premium brand spirits and champagne.
- Exclusive of the mandatory nightly Great Plains Foundation conservation levy, certain cultural guest experiences, and hot air ballooning (which should be booked in advance).
- At the time of confirmation, we will include the contribution to medical evacuation services. This does not replace the requirement for guests to carry comprehensive travel and medical insurance.
- The return scheduled seat in plane air transfers from Nairobi Wilson or properties in the greater Maasai Mara region to this camp are automatically included in the full nightly rate - subject to a minimum 2-night stay. Where air transfers are from properties located outside of these routings, the standard applicable flying costs will apply.
- Local airlines offer daily scheduled flights between Nairobi's Wilson airport and Maasai Mara's Ol Kiombo airstrip. Schedule and rates available on request. Minimum 2 guests required per flight.
- Local airlines use a variety of aircraft ranging from a Cessna Caravan (12 seats) to a 40-seat aircraft. The flying times are approximate as the service could land at additional airstrips en route, depending on passenger demand.
- \* For all multiple single-room reservations in shoulder and low season, a single supplement will apply from the 2nd single room.
- Each guest suite includes complimentary use of a pair of high-quality binoculars and a professional camera set, including camera body and lenses. Photos will be digitally presented to guests on departure.
- Check out time is 09:00am and guests may use public areas until departure. Late checkouts are unfortunately not available.

### CHILD POLICY

- Children are accommodated from a minimum age of 6 years.
- Activities will cater to family ability & safety. Some activities may have a specific age-related restriction - please refer to the general notes at the end of this manual.
- Child rates are applicable for up to one child aged 15 and younger sharing with one adult in a suite, when available.
- Children 16 and older will pay applicable adult rates and be accommodated in a separate suite.
- Families will be combined with other guests for all wildlife viewing activities.



# KENYA | Mara Expedition Camp

MAASAI MARA NATIONAL RESERVE



## MARA EXPEDITION CAMP

5 Guest tents, 1 x 2-bedroom family tent + Pilot / guide tent

11 January - 31 March 2026

01 April - 14 June 2026 &

01 October - 19 December 2026

15 June - 30 September 2026 &

20 December 2026 - 10 January 2027

### GUEST TENTS

- US\$ Rack per person per night sharing	\$ 1 370	\$ 1 225	\$ 1 730
- US\$ Rack single supplement*	\$ 685	\$ 612	\$ 865
- US\$ Rack children sharing with adult rate (6 - 15 years)	\$ 685	\$ 612	\$ 865

### 2-BEDROOM FAMILY TENT

- US\$ Rack per 2-bedroom family tent per night	\$ 4 109	\$ 3 674	\$ 5 191
---	----------	----------	----------

### COMMON CHARGES

- US\$ Nett Pilot/Guide rate per night	\$ 365
- US\$ Nett Private vehicle rate	\$ 980 per vehicle per night
- US\$ Nett Compulsory Maasai Mara National Reserve fee	January - June: \$ 100 per adult per night   \$ 50 per child per night (09-17 years)** July - December: \$ 200 per adult per night   \$ 50 per child per night (09-17 years)**
- US\$ Nett Great Plains Foundation Conservation & Community Contribution	\$ 100 per person (of any age) per night

### NOTES

- Fully inclusive of accommodation, scheduled wildlife viewing activities in the Maasai Mara National Reserve and Mara North Conservancy, all meals, laundry service, return Ol Kiombo airstrip road transfers, non-alcoholic and alcoholic beverages including premium brand spirits and champagne.
- Exclusive of the mandatory nightly Great Plains Foundation conservation levy, park fees, spa treatments, certain cultural guest experiences, and hot air ballooning (which should be booked in advance).
- At the time of confirmation, we will include the contribution to medical evacuation services. This does not replace the requirement for guests to carry comprehensive travel and medical insurance.
- \*\* Maasai Mara National Reserve fee is subject to change without prior notice.
- The return scheduled seat in plane air transfers from Nairobi Wilson or properties in the greater Maasai Mara region to this camp are automatically included in the full nightly rate - subject to a minimum 2-night stay. Where air transfers are from properties located outside of these routings, the standard applicable flying costs will apply.
- Local airlines offer daily scheduled flights between Nairobi's Wilson airport and Maasai Mara's Ol Kiombo airstrip. Schedule and rates available on request. Minimum 2 guests required per flight.
- Local airlines use a variety of aircraft ranging from a Cessna Caravan (12 seats) to a 40-seat aircraft. The flying times are approximate as the service could land at additional airstrips en route, depending on passenger demand.
- \* For all multiple single-room reservations in shoulder and low season, a single supplement will apply from the 2nd single room.
- Each guest tent includes complimentary use of a pair of high-quality binoculars and a professional camera set, including camera body and lenses. Photos will be digitally presented to guests on departure.
- Check out time is 09:00am and guests may use public areas until departure. Late checkouts are unfortunately not available.

### CHILD POLICY

- Children are accommodated from a minimum age of 6 years.
- Activities will cater to family ability & safety. Some activities may have a specific age-related restriction - please refer to the general notes at the end of this manual.
- The 2-Bedroom Family Tent can accommodate a family of 4 guests.
- Should the family tent be unavailable, child rates are applicable for up to one child aged 15 and younger sharing with one adult in a tent.
- Children 16 and older will pay applicable adult rates and be accommodated in a separate tent.
- Families will be combined with other guests for all wildlife viewing activities.

# KENYA | Mara Nyika Camp

NABOISHO PRIVATE CONSERVANCY - NORTHERN MAASAI MARA REGION

RELAIS & CHÂTEAUX MEMBER



## MARA NYIKA CAMP

4 Guest Suites, 1 x 2-Bedroom Family Suites, 1 x 2-Bedroom Private Suite  
+ Pilot / guide tent

11 January - 31 March 2026

01 April - 14 June 2026 &  
01 October - 19 December 2026

15 June - 30 September 2026 &  
20 December 2026 - 10 January 2027

### GUEST SUITES

- US\$ Rack per person per night sharing	\$ 2 320	\$ 1 745	\$ 3 405
- US\$ Rack single supplement*	\$ 1 160	\$ 873	\$ 1 702
- US\$ Rack children sharing with adults rate (6 - 15 years)	\$ 1 160	\$ 873	\$ 1 702

### 2-BEDROOM FAMILY SUITE

- US\$ Rack per 2-bedroom family suite per night	\$ 6 960	\$ 5 235	\$ 10 215
--	----------	----------	-----------

### THE SAMBUK SUITE AT MARA NYIKA

An exclusive use 2-bedroom Suite consisting of a shared lounge and dining area with private safari vehicle and guide included.

- US\$ Rack per night on exclusive use only	\$ 11 135	\$ 8 375	\$ 16 345
---	-----------	----------	-----------

### COMMON CHARGES

- US\$ Nett Pilot/Guide rate per night	\$ 365		
- US\$ Nett Private vehicle rate	\$ 980 per vehicle per night		
- US\$ Nett Great Plains Foundation Conservation & Community Contribution	\$ 100 per person (of any age) per night		

## NOTES

- Fully inclusive of accommodation, all national park and reserve conservation fees, scheduled wildlife viewing activities on Naboisho Conservancy, all meals, laundry service, return airstrip road transfers, non-alcoholic and alcoholic beverages including premium brand spirits and champagne.
- Every 3 night + stay includes one day's wildlife viewing in the Maasai Mara National Reserve per stay. For guests staying 1 or 2 nights only, an additional Maasai Mara National Reserve entrance fee is applicable.
- Exclusive of the mandatory nightly Great Plains Foundation conservation levy, spa treatments, wildlife viewing activities in the Maasai Mara National Reserve for those staying only 1 or 2 nights, certain cultural guest experiences, and hot air ballooning (which should be booked in advance).
- At the time of confirmation, we will include the contribution to medical evacuation services. This does not replace the requirement for guests to carry comprehensive travel and medical insurance.
- The return scheduled seat in plane air transfers from Nairobi Wilson or properties in the greater Maasai Mara region to this camp are automatically included in the full nightly rate - subject to a minimum 2-night stay. Where air transfers are from properties located outside of these routings, the standard applicable flying costs will apply.
- Local airlines offer twice daily scheduled flights between Nairobi's Wilson airport and Naboisho (Ol Seki) airstrip. Schedule and rates available on request. Minimum 2 guests required per flight.
- Local airlines use a variety of aircraft ranging from a Cessna Caravan (12 seats) to a 40-seat aircraft. The flying times are approximate as the service could land at additional airstrips en route, depending on passenger demand.
- \* For all multiple single-room reservations in shoulder and low season, a single supplement will apply from the 2nd single room.
- Each guest suite, including the Sambuk Suite at Mara Nyika, includes complimentary use of a pair of high-quality binoculars and a professional camera set, including camera body and lenses. Photos will be digitally presented to guests on departure.
- Check out time is 09:00am and guests may use public areas until departure. Late checkouts are unfortunately not available.

## CHILD POLICY

- Children are accommodated from a minimum age of 6 years.
- Activities will cater to family ability & safety. Some activities may have a specific age-related restriction - please refer to the general notes at the end of this manual.

### MARA NYIKA CAMP: GUEST SUITES

- Child rates are applicable for up to one child aged 15 and younger sharing with two adults in a suite.
- Children 16 and older will pay applicable adult rate and be accommodated in a separate suite.
- Families will be combined with other guests for all wildlife viewing activities.

### 2 BEDROOM FAMILY SUITE

- The 2-Bedroom Family Suite can accommodate a family of 4 guests.
- Nightly rates include the services of a private safari drive vehicle and guide.

### THE SAMBUK SUITE AT MARA NYIKA

- The Sambuk Suite at Mara Nyika is an exclusive use two-bedroom suite that can accommodate 4 adults sharing or a maximum of 5 guests for families with children (aged 6 - 15 years). Exceptions may apply.
- Child rates and private vehicle requirements do not apply because the Suite is sold on exclusive use basis only.



# KENYA | Mara Plains Camp

OLARE MOTOROGI PRIVATE CONSERVANCY - NORTHERN MAASAI MARA REGION  
RELAIS & CHÂTEAUX MEMBER



## MARA PLAINS CAMP

5 Guest Suites, 1 x 2 Bedroom Private Suite + Pilot / guide tent

11 January - 31 March 2026

01 April - 14 June 2026 &

01 November - 19 December 2026

15 June - 31 October 2026 &

20 December 2026 - 10 January 2027

### GUEST SUITES

- US\$ Rack per person per night sharing	\$ 2 320	\$ 1 745	\$ 3 405
- US\$ Rack single supplement*	\$ 1 160	\$ 873	\$ 1 702
- US\$ Rack children sharing with adults rate (6 - 15 years)	\$ 1 160	\$ 873	\$ 1 702

### THE JAHAZI SUITE AT MARA PLAINS

An exclusive use 2-bedroom Suite consisting of a shared lounge, dining area and private pool with a private safari vehicle and guide included.

- US\$ Rack per night on exclusive use only	\$ 11 135	\$ 8 375	\$ 16 345
---	-----------	----------	-----------

### COMMON CHARGES

- US\$ Nett Pilot/Guide rate per night	\$ 365		
- US\$ Nett Private vehicle rate	\$ 980 per vehicle per night		
- US\$ Nett Great Plains Foundation Conservation & Community Contribution	\$ 100 per person (of any age) per night		

## NOTES

- Fully inclusive of accommodation, all national park and reserve conservation fees, scheduled wildlife viewing activities on the Maasai Mara National Reserve (one day per stay) & Olare Motorogi Conservancy, all meals, laundry service, return Olare Motorogi airstrip road transfers, non-alcoholic and alcoholic beverages including premium brand spirits and champagne.
- Exclusive of nightly Great Plains mandatory Foundation conservation levy, spa treatments, certain cultural guest experiences, and hot air ballooning (which should be booked in advance).
- Exclusive of nightly Great Plains mandatory Foundation conservation levy, spa treatments, medical evacuation services, certain cultural guest experiences, and hot air ballooning (which should be booked in advance).
- At the time of confirmation, we will include the contribution to medical evacuation services. This does not replace the requirement for guests to carry comprehensive travel and medical insurance.
- The return scheduled seat in plane air transfers from Nairobi Wilson or properties in the greater Maasai Mara region to this camp are automatically included in the full nightly rate - subject to a minimum 2-night stay. Where air transfers are from properties located outside of these routings, the standard applicable flying costs will apply.
- Local airlines offer twice daily scheduled flights between Nairobi's Wilson airport and Maasai Mara's Olare Orok airstrip. Schedule and rates available on request. Minimum 2 guests required per flight.
- Local airlines use a variety of aircraft ranging from a Cessna Caravan (12 seats) to a 40-seat aircraft. The flying times are approximate as the service could land at additional airstrips en route, depending on passenger demand.
- \* For all multiple single-room reservations in shoulder and low season, a single supplement will apply from the 2nd single room.
- Each guest suite, including the Jahazi Suite at Mara Plains, includes complimentary use of a pair of high-quality binoculars and a professional camera set, including camera body and lenses. Photos will be digitally presented to guests on departure.
- Check out time is 09:00am and guests may use public areas until departure. Late checkouts are unfortunately not available.

## CHILD POLICY

- Children are accommodated from a minimum age of 6 years.
- Activities will cater to family ability & safety. Some activities may have a specific age-related restriction - please refer to the general notes at the end of this manual.

## MARA PLAINS CAMP

- Child rates are applicable for up to one child 15 and younger sharing with two adults in a suite.
- Children 16 and older will pay applicable adult rates and be accommodated in a separate suite.
- Families will be combined with other guests on all activities.

## THE JAHAZI SUITE AT MARA PLAINS

- The Jahazi Suite at Mara Plains is an exclusive use two-bedroom suite that can accommodate 4 adults sharing or a maximum of 5 guests for families with children (aged 6 - 15 years). Exceptions may apply.
- Child rates and private vehicle requirements do not apply because the Suite is sold on exclusive use basis only.

# KENYA | ol Donyo Lodge

CHYULU HILLS / AMBOSELI REGION

RELAIS & CHÂTEAUX MEMBER



## OL DONYO LODGE

8 Deluxe Pool Suites, 1 x 2-Bedroom Sambu Suite + Pilot / guide room

11 January - 31 March 2026

01 April - 14 June 2026 &

01 November - 19 December 2026

15 June - 31 October 2026 &

20 December 2026 - 10 January 2027

### DELUXE POOL SUITES

- US\$ Rack per person per night sharing	\$ 1 775	\$ 1 590	\$ 2 555
- US\$ Rack single supplement*	\$ 888	\$ 795	\$ 1 278
- US\$ Rack child sharing with adults rate (6 - 15 years)	\$ 888	\$ 795	\$ 1 278

### 2-BEDROOM SAMBU SUITE

- US\$ Rack per Suite per night	\$ 5 325	\$ 4 770	\$ 7 665
---------------------------------	----------	----------	----------

### COMMON CHARGES

- US\$ Nett Pilot/Guide rate per night	\$ 365		
- US\$ Nett Private vehicle rate	\$ 980 per vehicle per night		
- US\$ Nett Great Plains Foundation Conservation & Community Contribution	\$ 100 per person (of any age) per night		

## NOTES

- Fully inclusive of accommodation, scheduled activities (including horseback riding), meals, Star bed experience, Big Life conservation fees, daily laundry service, return Chyulu airstrip road transfers, non-alcoholic and alcoholic beverages including premium brand spirits and champagne.
- As part of our offering at ol Donyo Lodge, a complimentary 15-minute helicopter flight is included, providing an amazing overview of the region, subject to availability. One flight per stay, with a minimum stay of two nights required.
- Exclusive of nightly Great Plains Foundation conservation levy, spa treatments, certain cultural guest experiences, and additional activities such as day trips to Amboseli National Park.
- At the time of confirmation, we will include the contribution to medical evacuation services. This does not replace the requirement for guests to carry comprehensive travel and medical insurance.
- The return scheduled seat in plane air transfers from Nairobi Wilson or properties in the greater Chyulu Hills/Amboseli region to this camp are automatically included in the nightly rate - subject to a minimum 2-night stay. Where air transfers are from properties located outside of these routings, the standard applicable flying costs will apply.
- Safarilink offer daily scheduled flights between Nairobi's Wilson airport and ol Donyo Lodge. Schedules and rates available on request. Minimum 2 guests required per flight.
- During 01 April - 15 June and 01 November - 15 December 2026, the daily Safarilink scheduled flight from Nairobi Wilson Airport to ol Donyo Lodge departs only in the morning. Please consider this when booking connecting flights and air transfers.
- Safarilink mainly uses a Cessna Caravan (12 seats) but other smaller aircraft could be used.
- Scheduled air transfer service could land at additional airstrips en route to ol Donyo or Nairobi, depending on passenger demand.
- \* For all multiple single-room reservations in shoulder and low season, a single supplement will apply from the 2nd single room.
- Each guest suite includes complimentary use of a pair of high-quality binoculars and a professional camera set, including camera body and lenses. Photos will be digitally presented to guests on departure.
- Check out time is 09:00am and guests may use public areas until departure. Late checkouts are unfortunately not available.

## CHILD POLICY

- Children are accommodated from a minimum age of 6 years.
- Activities will cater to family ability & safety. Some activities may have a specific age-related restriction - please refer to the general notes at the end of this manual

## DELUXE POOL SUITES

- Child rates are applicable for up to one child 15 and younger sharing with two adults in a suite.
- Children 16 and older pay the applicable adult rates and will be accommodated in a separate suite.
- Families will be combined with other guests for all wildlife viewing activities.

## SAMBU SUITE

- Sambu Suite rate is calculated on a per Suite basis sleeping maximum 4 guests sharing.
- Should the Sambu suite be unavailable, child rates are applicable for up to one child 15 and younger sharing with two adults in a deluxe pool suite.
- Child rates do not apply because the Suite is sold on exclusive use basis only.



# KENYA | Zamara Private

MAASAI MARA NATIONAL RESERVE



## ZAMARA PRIVATE

6 Guest Suites + Pilot / guide room

01 May 2026 - 10 January 2027

### EXCLUSIVE USE CAMP NIGHTLY RATE

- US\$ Rack per night - exclusive use

\$ 32 500

### COMMON CHARGES

- US\$ Nett Pilot/Guide rate per night

\$ 365

- US\$ Nett Great Plains Foundation Conservation & Community Contribution

\$ 100 per person (of any age) per night

## NOTES

- Fully inclusive of accommodation, all national park and reserve conservation fees, scheduled wildlife viewing activities in the Maasai Mara National Reserve, all meals, laundry service, return of Kiombo airstrip road transfers, non-alcoholic and alcoholic beverages including premium brand spirits and champagne.
- Exclusive of nightly Great Plains mandatory Foundation conservation levy, spa treatments, medical evacuation services, certain cultural guest experiences, and hot air ballooning (which should be booked in advance).
- Return scheduled seat in plane air transfers from Nairobi Wilson or properties in the greater Maasai Mara region are included in the full nightly rate for the first 12 guests, subject to a minimum 2-night stay. Zamara Private can accommodate up to 16 guests when children are included. These additional guests' air transfers are not included in the standard nightly rate and would be charged for separately. For any air transfers outside of these areas, standard flying costs apply to all guests in the party.
- Local airlines offer daily scheduled flights between Nairobi's Wilson airport and Maasai Mara's of Kiombo airstrip. Schedule and rates available on request. Minimum 2 guests required per flight.
- Local airlines use a variety of aircraft ranging from a Cessna Caravan (12 seats) to a 40-seat aircraft. The flying times are approximate as the service could land at additional airstrips en route, depending on passenger demand.
- Each guest suite includes one pair of high-quality binoculars and a professional camera set, including camera body and lenses for guest's complimentary use. Photos will be downloaded to a memory stick on guest's departure.
- We maintain a high level of flexibility when it comes to check-out times at our camps. However, due to some scheduled air transfer schedules and the exclusive-use nature of this property, late checkouts may not be accommodated at times. Please discuss your requirements with our reservations team, who will be best positioned to assist you at the time of enquiry.

## CHILD POLICY

- Children are accommodated from a minimum age of 6 years.
- Activities will cater to family's ability & safety. Some activities may have a specific age-related restriction - please refer to the general notes at the end of this manual.
- Triples for children sharing with adults may be arranged upon request; max 4 triples at one time (6-15 years);
- One larger master bedroom is located close to a standard guest suite and can be used as a family unit. There is a small outside deck with private doors connecting the two rooms. This is suitable for a family of 5 (2 adults in the master & 3 kids in a triple in the other suite) or 6 (parents with one child in an extra bed in the master and kids in a triple in the other suite). Please note that the two suites are not joined or interleading and are separate units.

# 2026 KENYA | Scheduled Air Transfer Rates

AIRPLANE AIR TRANSFER & INTER CAMP FLYING RATES

VALID: 01 JANUARY - 31 DECEMBER 2026



DEPARTURE / DESTINATION	DESTINATION / DEPARTURE	NETT SCHEDULED SEAT-IN-PLANE SERVICE PER PERSON FLYING RATES	APPROXIMATE FLYING TIMES - ONE WAY
Nairobi Wilson Airport	Mara Expedition Camp, Mara Nyika Camp, The Sambuk Suite at Mara Nyika, Mara Toto Tree Camp, Mara Plains Camp & The Jahazi Suite at Mara Plains	No Charge - Included in the night rate	1 Hour to 1 Hour 15 Minutes
Nairobi Wilson Airport	Zamara Private	No Charge - Included in the night rate for the first 12 guests*	1 Hour to 1 Hour 15 Minutes
Nairobi Wilson Airport	ol Donyo Lodge	No Charge - Included in the night rate	50 Minutes to 1 Hour 15 Minutes

DEPARTURE	DESTINATION	High Season: 01 January - 31 March 2026, 16 June - 31 October 2026 & 16 - 31 December 2026	APPROXIMATE FLYING TIMES - ONE WAY
ol Donyo Lodge	Mara Expedition Camp, Mara Nyika Camp, The Sambuk Suite at Mara Nyika, Mara Toto Tree Camp, Mara Plains Camp & The Jahazi Suite at Mara Plains	No Charge - Included in the night rate	1 Hour 10 Minutes
	Third-Party properties in the Maasai Mara	\$ 225 per person surcharge + \$15 per person tax	

## EXTRA SEAT

Extra Seat for Camera Equipment or additional Luggage	Additional weight allowance of up to 75 kilograms is available. Costs are on request and are dependent on routing and time of travel. Please ask your safari designer for more information.
---	---

### NOTES

- All fares and taxes are subject to change without prior notice and will be confirmed at the time of reservation.
- The above flying rates are nett and non-commissionable.
- These schedules operate on a first-book / first-fly basis, with limited seats. To guarantee a seat, it is recommended to book in advance to allow for efficient scheduling and planning.
- Should the scheduled flying service between ol Donyo Lodge and the Great Plains Maasai Mara Camps be full, guests will automatically be booked on the flying service via Nairobi, the cost of which is included in the nightly rates.
- A surcharge applies to the scheduled flying service between ol Donyo Lodge and the Maasai Mara if guests are not staying at a Great Plains Conservation property in the Maasai Mara.
- Scheduled air transfers between Mara Expedition Camp, Mara Toto Tree Camp, Mara Nyika Camp, Sambuk Suite at Mara Nyika, Mara Plains Camp, Jahazi Suite at Mara Plains, ol Donyo Lodge and Nairobi Wilson Airport are included in the nightly rates. Where air transfers are from properties located outside of these routings, the standard applicable flying costs will apply.
- Return scheduled seat in plane air transfers from Nairobi Wilson or properties in the greater Maasai Mara region are included in the full nightly rate at Zamara Private for the first 12 guests, subject to a minimum 2-night stay. Zamara Private can accommodate up to 16 guests when children are included. These additional guests' air transfers are not included in the standard nightly rate and would be charged for separately. For any air transfers outside of these areas, standard flying costs apply to all guests in the party.
- A minimum 2 nights per camp stay at all camps is required to qualify for this value add.
- A luggage limit of 15kgs per guest in SOFT bags, including carry-on luggage and camera equipment.
- Maximum luggage dimensions are 30cm (11.8 inches) wide x 45cm (17 inches) high x 60cm (23 inches) long.
- For both safety and comfort reasons, passengers weighing 90 kg (for women) and 110 kg (for men) or more must book and pay for an extra seat. Please inform us prior to travel if this applies.
- Passengers travelling on a seat-in-plane rate basis may have up to 2 stops or more en route to the final destination.
- The above rates are only valid for bookings made at least 5 days prior to departure. A cancellation policy is applicable.
- Minimum of 2 guests are required on all sectors.



# KENYA | Helicopter Scenic Flights & Transfers

VALID: 01 JANUARY - 31 DECEMBER 2026



SCENIC HELICOPTER FLIGHTS FROM OL DONYO LODGE				
	Nett excursion costs per person	Approximate flying time	Park fees per person	Excursion description
- <b>Sunset with sundowners</b>	\$ 680	1 Hour	n/a	A scenic sunset flight around the Chyulu Hills and the sweeping plains surrounding ol Donyo Lodge, where Africa's tallest peak, Mount Kilimanjaro, may form a breathtaking backdrop. Land in a spectacular spot to enjoy sundowners before your return flight to the lodge.
- <b>Chyulu Hills mist forest</b>	\$ 750	1 Hour	n/a	A morning flight over dramatic landscapes to the nearby Chyulu Hills mist forest, with the possibility of glimpsing Mount Kilimanjaro in the distance. Enjoy coffee, tea, and a picnic breakfast surrounded by nature before your scenic return to ol Donyo Lodge.
- <b>Safari drive in the Amboseli with scenic air transfer(s)</b>	Return by vehicle:		\$ 90 (adult) \$ 45 (child)	A scenic helicopter transfer to Amboseli National Park, where the majestic Mount Kilimanjaro often crowns the horizon. On arrival in the Amboseli, meet your Great Plains safari vehicle and guide for a two- to three-hour private safari drive in Amboseli. Upon completion, you have the choice of returning to ol Donyo Lodge via helicopter, or with your guide in your safari drive vehicle. ** Private safari drive vehicle cost will be added to the booking in addition to the flight cost, subject to vehicle being available.
	\$ 398 **	15 Minutes		
	Return by helicopter:			
	\$ 795	30 Minutes		

## NOTES

- All excursions should ideally be pre-booked prior to arrival to avoid disappointment.
- These rates based on a scheduled seat in helicopter basis per excursion.
- Guests are provided with headsets and pilot commentary of the area throughout their flight.
- Scenic flights from ol Donyo Lodge accommodate a maximum of 4 guests.
- The drive between ol Donyo Lodge and the Amboseli takes approximately 2 hours.
- The helicopter excursions at ol Donyo Lodge are predominantly done in a Robinson 44 or Robinson 66.

# NAIROBI | Transfer & Touring Rates

GREAT PLAINS KENYA TRANSFERS - VEHICLE RATES 2026



LUXURY VEHICLE TRANSFER RACK RATES		COST PER VEHICLE ONE WAY SEATING 1-4 GUESTS
DEPARTURE	DESTINATION	
Jomo Kenyatta International Airport	Nairobi City Hotels and Muthaiga	\$ 190
Jomo Kenyatta International Airport	Nairobi Wilson Airport	\$ 190
Jomo Kenyatta International Airport	Langata, Karen, Windsor, Tribe	\$ 196
Nairobi Wilson	Nairobi City Hotels and Muthaiga	\$ 190
Nairobi Wilson	Langata, Karen, Windsor, Tribe	\$ 190
Nairobi Wilson	Jomo Kenyatta International Airport afternoon arrival Including a restaurant stop (dinner not included)	\$ 471
Nairobi Wilson	Jomo Kenyatta International Airport late afternoon arrival including a restaurant stop (dinner not included)	\$ 393
Jomo Kenyatta International Airport	Afternoon Disposal via restaurant back to Jomo Kenyatta International Airport (dinner not included)	\$ 518
Jomo Kenyatta International Airport	Late afternoon via restaurant back to Jomo Kenyatta International Airport (dinner not included)	\$ 471
Karen and Langata Hotels	Karen and Langata Hotels	\$ 190
Karen and Langata Hotels	Nairobi City Hotels	\$ 190
Jomo Kenyatta International Airport	Nairobi National Park	\$ 190
Nairobi Half Day Disposal (5hrs max) - pick-up and drop-off from/to anywhere within Nairobi		\$ 391
Nairobi Full-Day Disposal (10hrs max) – pick-up and drop-off from/to anywhere within Nairobi		\$ 522
Nairobi Half-Day Disposal with transfer to Jomo Kenyatta International Airport – pick-up and drop-off from/to anywhere within Nairobi		\$ 471
Nairobi Full-Day Disposal with transfer to Jomo Kenyatta International Airport – pick-up and drop-off from/to anywhere within Nairobi		\$ 620
Dinner transfers in Nairobi - Return		\$ 392

## NOTES

- Rates are quoted per vehicle per service with a maximum of 4 guests per vehicle. For 5 to 8 guests traveling together, a second vehicle will need to be booked at the above rates.
- Rates exclude entrance fees and lunch/meals for guests.
- Any extra cost incurred will be for the guest's account.



# GREAT PLAINS

CONSERVING AND EXPANDING NATURAL HABITATS

*Zambia*

*Zimbabwe*

**Mpala Jena Private Villas  
& Mpala Jena**

Kasane

Livingstone

Victoria Falls

Kasane  
Forest Reserve

Zambezi  
National Park

Matetsi Safari area

Sibuyu  
Forest Reserve

Hwange National Park

*Botswana*

Lake Kariba

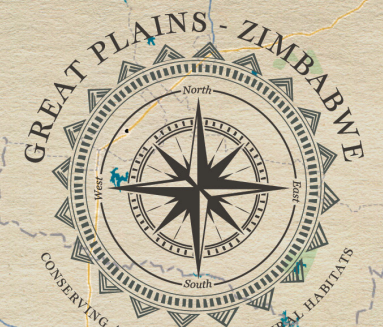
Matusadona  
National Park

Chirisa  
Safari Area

**Tembo Plains Camp &  
The Zanzi Suite at Tembo Plains**

Sapi Private  
Reserve

Mana Pools  
National Park



GREAT PLAINS CONSERVATION  
STRIVES TO FIND THE RIGHT FORMULA OF  
CONSERVATION, COMMUNITIES AND COMMERCE  
THAT MAKES A LASTING, SUSTAINABLE DIFFERENCE  
TO THE WORLD'S ICONIC WILDLIFE HABITATS

Harare



# ZIMBABWE | Tembo Plains Camp and The Zanji Suite at Tembo Plains

SAPI PRIVATE RESERVE, GREATER MANA POOLS REGION  
RELAIS & CHÂTEAUX MEMBER



## TEMBO PLAINS CAMP

4 Guest Suites with private pools + 2 Pilot / guide tents

01 April - 31 May 2026 &  
01 October - 20 November 2026

01 June - 30 September 2026

### GUEST SUITES

- US\$ Rack per person per night sharing	\$ 1 340	\$ 1 935
- US\$ Rack single supplement*	\$ 670	\$ 967
- US\$ Rack child sharing with adults rate (6 - 15 years)	\$ 670	\$ 967

### COMMON CHARGES

- US\$ Nett Pilot/Guide rate per night	\$ 365
- US\$ Nett Private vehicle rate	\$ 980 per vehicle per night
- US\$ Nett Mana Pool National Park & Great Plains Foundation Conservation & Community Contribution	\$ 120 per person (of any age) per night (** Includes a day visit to the Mana Pools National Park on a 3 night stay or longer)

## THE ZANJI SUITE AT TEMBO PLAINS

An exclusive use 2-bedroom Suite consisting of a shared lounge, dining area and private pool and including private safari drive vehicle and guide.

- US\$ Rack per night on exclusive use only	\$ 6 435	\$ 9 285
- US\$ Nett Mana Pool National Park & Great Plains Foundation Conservation & Community Contribution	\$ 120 per person (of any age) per night (** Includes a day visit to the Mana Pools National Park on a 3 night stay or longer)	

### NOTES

- Fully inclusive of accommodation, scheduled wildlife viewing activities, one wildlife experience in the Mana Pools National Park on 3 night stays or longer, all meals, return airstrip road transfers, laundry services, non-alcoholic and alcoholic beverages including premium brand spirits and champagne.
- Exclusive of the mandatory nightly Great Plains Foundation conservation levy, park fees, spa treatments and air transfers.
- Tembo Plains Camp is a seasonal camp which is closed between 21 November - 31 March annually.
- \* For all multiple single-room reservations in shoulder and low season, a single supplement will apply from the 2nd single room.
- Each guest suite includes one pair of high quality binoculars and a professional camera set, including a professional camera body lenses for guest's complimentary use. Photos will be downloaded to a memory stick on guest's departure.

### CHILD POLICY

- Children are accommodated from a minimum age of 6 years.
- Activities will cater to family ability & safety. Some activities may have a specific age related restriction - please refer to the general notes at the end of this manual.

#### Tembo Plains Camp

- Child rates are applicable for one child aged 15 and younger sharing with two adults in a suite.
- Children 16 and older will pay applicable adult rates and be accommodated in a separate suite.
- Families will be combined with other guests on all activities.

#### The Zanji Suite at Tembo Plains

- The Zanji Suite at Tembo Plains is an exclusive use two-bedroom suite which can accommodate up to 4 adults sharing or a maximum of 5 for families with children. Exceptions may apply.
- Child rates and private vehicle requirements do not apply because the Suite is sold on exclusive use basis only.



# ZIMBABWE | Mpala Jena and Mpala Jena Private Villas

ZAMBEZI NATIONAL PARK, VICTORIA FALLS



MPALA JENA		01 April - 30 September 2026 & 20 December 2026 - 10 January 2027	
3 Standard Guest Suites (increasing to 4 from 01 May 2026) + 2 x 2-Bedroom Family Suites + 1 Pilot / guide tent		11 January - 31 March 2026	01 October - 19 December 2026
STANDARD GUEST SUITE			
- US\$ Rack per person per night sharing	\$ 1 020	\$ 1 300	\$ 1 145
- US\$ Rack single supplement	\$ 510	\$ 650	\$ 573
- US\$ Rack child sharing with adults rate (6 - 15 years)	\$ 612	\$ 780	\$ 687
2-BEDROOM FAMILY SUITE			
- US\$ Rack per Family Suite per night	\$ 3 260	\$ 4 160	\$ 3 665
COMMON CHARGES			
- US\$ Nett Pilot/Guide rate per night	\$ 320		
- US\$ Nett Private vehicle rate	\$ 705 per vehicle per night		
- US\$ Nett Zambezi National Park and Conservation Fee	\$ 30 per person (of any age) per night		
MPALA JENA PRIVATE VILLAS			
Two exclusive-use 3-bedroom Villas, each consisting of a private lounge, indoor/outdoor dining areas, private pool, private safari vehicle, motorised boat and services of a private chef, staff and wildlife guide. One guide tent is available.			
- US\$ Rack per Villa per night (exclusive use)	\$ 6 370	\$ 8 130	\$ 7 160
- US\$ Nett Zambezi National Park and Conservation Fee	\$ 30 per person (of any age) per night		

## NOTES

- Great Plains Conservation does not own or manage Mpala Jena or Mpala Jena Private Villas. This is a preferred 3rd party property in Victoria Falls where we hold an exclusive Sales, Marketing and Central Reservations arrangement. Mpala Jena employed staff care for all guests staying at this property.
- The guest rate is fully inclusive of accommodation, wildlife viewing activities from the property in the Zambezi National Park (wildlife drives, guided walks and boating on the Zambezi), all meals, half-day tour of the Victoria Falls (subject to a minimum 2-night stay), private return road transfers to/from Mpala Jena from Victoria Falls Airport via the Kalambezi jetty or the Zambezi National Park gate, daily laundry, local alcoholic and non-alcoholic beverages.
- Exclusive of any additional Victoria Falls based sightseeing and activities (except for the one half-day guided tour of Victoria Falls for those guests on a minimum 2 night stay) International and imported wines, spirits and champagnes, items of a personal nature, staff gratuities, curio store purchases and mandatory Zambezi National Park nightly conservation levy.
- Guests can now book and pay for helicopter transfers and/or excursions between the camp and Victoria Falls town or airport.
- Each Standard Guest Suite can accommodate a maximum of 2 guests sharing. No Triples are available in the Standard Guest Suites.
- The Zambezi National Park Fee is applicable to all stays and is subject to change.
- Each Mpala Jena Private Villa offers guests their own guide, dedicated open safari vehicle and motorised boat at no additional cost.

## CHILD POLICY

- Children are welcome from a minimum age of 6 years.
- Activities will cater to family ability & safety. Some activities may have a specific age related restriction - please refer to the general notes at the end of this manual.

## STANDARD GUEST SUITE

- Child rates are applicable for one child aged 15 and younger sharing with one adult in a standard suite.
- Children 16 and older will pay applicable adult rates and be accommodated in a separate standard suite.
- Families will be combined with other guests on all activities.

## FAMILY SUITE

- Children are accommodated from a minimum age of 6 years.
- The two 2-bedroom Mpala Jena Family Suites can each accommodate up to 4 adult guests sharing or a maximum of 5 for families with children. Exceptions may apply.
- Families could be combined with other guests on activities.

## MPALA JENA PRIVATE VILLAS

- Children are accommodated from a minimum age of 6 years.
- The two 3-bedroom Mpala Jena Private Villas can each accommodate up to 6 adult guests sharing or a maximum of 4 adults sharing with 3 children between the ages of 6 and 15 years for families with children.

# 2026 ZIMBABWE | Scheduled Air Transfer Rates

AIRPLANE AIR TRANSFER & INTER CAMP FLYING RATES

VALID: 01 JANUARY - 31 DECEMBER 2026



DEPARTURE	DESTINATION	NETT SCHEDULED SEAT IN PLANE SERVICE PER PERSON PER SEAT ONE WAY FLYING RATES	SEAT RATES AVAILABLE DURING:	INDICATIVE FLYING TIME ONE WAY
VICTORIA FALLS	SAPI RESERVE	\$ 825	01 April - 20 November	2 Hours 15 Minutes
PRIVATE SAPI RESERVE	VICTORIA FALLS			
VICTORIA FALLS	HWANGE - A	\$ 244	01 January - 31 December	45 Minutes
HWANGE - A	VICTORIA FALLS			
VICTORIA FALLS	HWANGE - B	\$ 400	01 January - 31 December	55 Minutes
HWANGE - B	VICTORIA FALLS			
VICTORIA FALLS	KARIBA	\$ 650	01 April - 20 November	1 Hour 45 Minutes
KARIBA	VICTORIA FALLS			
HWANGE	SAPI RESERVE	\$ 825	01 April - 20 November	2 Hours 05 Minutes
SAPI RESERVE	HWANGE			
KARIBA	SAPI RESERVE	\$ 381	01 April - 20 November	30 Minutes
SAPI RESERVE	KARIBA			
HARARE	SAPI RESERVE	\$ 681	01 April - 20 November	1 Hour 35 Minutes
SAPI RESERVE	HARARE			

## NOTES

- All fares and taxes are subject to change without prior notice and will be confirmed at the time of reservation.
- These schedules operate on a first-book/first-fly basis, and seats are limited. To guarantee a seat, it is recommended to book in advance, which allows for efficient scheduling and planning.
- All passengers departing from Harare, Victoria Falls, Hwange National, Kariba, and Chikwenya will have \$15 per seat local departure tax added at time of invoice. Departure tax is subject to change without prior notice.
- Check-in for all flights is 1 hour prior to departure. Any guest arriving less than 30 minutes before the stipulated departure time may have their seat cancelled to avoid knock-on effects on the schedule for the remainder of the day.
- Maximum hand luggage is 5kg (11lbs and 1 piece allowed) which is part of the 20kg (44lbs) total luggage limitation.
- Maximum checked in luggage size is 30cm (12in) wide x 35 cm (14in) high x 70cm (28in) long.
- Additional seats can be bought prior to departure for additional camera equipment or overweight luggage. This "additional" seat allows an extra 30kgs of luggage.
- Passengers over 115kg may have to purchase an extra seat – please inform us prior to travel.
- If we are not informed when a reservation is made, you may be invoiced for an extra seat.
- Up to 4 stops may be made en route to and from camps or lodges; however, the charter company will always attempt to minimise this to as few stops as possible for your convenience.
- Guests arriving in Zimbabwe after 2 p.m. and still needing to pass through customs and immigration may not be able to connect to Sapi Reserve using scheduled air transfer services. In these instances, an overnight in Victoria Falls and/or Harare may be required. The same may apply should guests need to depart Zimbabwe on early morning Regional or International departure flights. As such, it would be best to check with your safari designer at the time of enquiry. Alternatively, guests are able to book a private charter if they wish to catch same-day connecting services.
- On occasion, flights may be affected due to extreme weather conditions. The safety of guests is paramount, and the charter company reserves the right to delay departures or cancel a flight if the conditions are too risky to fly in. We cannot be held responsible for any changes, delays or cancellations due to weather conditions beyond our control. As such, guests should have sufficient and applicable travel insurance in place for this.
- Certain airstrips may be out of service during Zimbabwe's rainy season (typically November to April). In these cases, the closest alternative airstrip will be used. It is imperative that passengers have adequate Travel Insurance to cover cancelled flights, costs of alternative accommodations/arrangements and possible missed onward connections.

- Air transfer rates to Sapi Reserve are applicable for guests staying at Tembo Plains Camp and The Zanzi Suite at Tembo Plains.
- Hwange A services Robins Camp, Hwange Main, Sinamatella, Shumba, Deka.
- Hwange B services Hwange National, Umtshibi, Manga, Linkwasha, Bomani, Sipepa, Libuti.
- Minimum 2 guests are required on all sectors.
- The above flying times are indicative and could vary depending on the aircraft used.
- All rates are nett and non-commissionable.
- Payments for flying services are governed by our standard payment policy, which is available on request.
- Air transfers cancelled more than 7 days prior to departure date incur no cancellation fee.
- If air transfers are cancelled within 14 days prior to travel, 100% of the total fare is liable.
- Our flying partners may substitute the originally confirmed aircraft due to unforeseen factors.
- Prices are based on current fuel pricing and applicable government taxes in Zimbabwe. An escalation in fuel and/or taxes will influence the price and we reserve the right to adjust the prices quoted without prior notification.
- Departure times for inter-camp transfers, i.e. between Hwange and Sapi Reserve, or vice versa, will be advised in camp the night prior.



*Namibia*

*Erwabwata  
National Park*

*Mudumu  
National Park*

*Chobe Forest Reserve*

*Chobe National Park*

Selinda Explorers Camp

Selinda Camp &  
Selinda Suite

Zarafa Camp &  
The Dhow Suite at Zarafa

Okavango Explorers Camp

Sitatunga Private Island &  
Sitatunga Private Island Suite

Duba Explorers Camp

Duba Plains Camp &  
Duba Plains Suite

Moremi Game Reserve  
*Okavango Delta*

*Botswana*

Maun

Kasane

## GREAT PLAINS

CONSERVING AND EXPANDING NATURAL HABITATS

GREAT PLAINS - BOTSWANA



CONSERVING AND EXPANDING NATURAL HABITATS

GREAT PLAINS CONSERVATION  
STRIVES TO FIND THE RIGHT FORMULA OF  
CONSERVATION, COMMUNITIES AND COMMERCE  
THAT MAKES A LASTING, SUSTAINABLE DIFFERENCE  
TO THE WORLD'S ICONIC WILDLIFE  
AND WILDERNESSES.

*Nxai Pan  
National Park*



# BOTSWANA | Okavango Explorers Camp

OKAVANGO REGION IN THE WEST OF THE SELINDA RESERVE, NORTHERN BOTSWANA



## OKAVANGO EXPLORERS CAMP

6 Guest Tents, + Pilot / guide tent

11 January - 31 March 2026

01 April - 14 June 2026 &

01 October - 19 December 2026

15 June - 30 September 2026 &

20 December 2026 - 10 January 2027

### GUEST TENTS

- US\$ Rack per person per night sharing	\$ 1 180	\$ 1 420	\$ 2 050
- US\$ Rack single supplement*	\$ 590	\$ 710	\$ 1 025
- US\$ Rack children sharing with adults rate (6-15 years)	\$ 590	\$ 710	\$ 1 025

### COMMON CHARGES

- US\$ Nett Pilot/Guide rate per night	\$ 365
- US\$ Nett Private vehicle rate	\$ 980 per vehicle per night
- US\$ Nett Great Plains Foundation Conservation & Community Contribution	\$ 100 per person (of any age) per night

### NOTES

- Fully inclusive of accommodation, scheduled wildlife viewing activities, all meals, return airstrip road transfers, laundry services, non-alcoholic and alcoholic beverages including premium brand spirits and champagne.
- Exclusive of the mandatory nightly Great Plains Foundation conservation levy.
- The return scheduled seat in plane air transfers from Maun and/or Kasane Airports, as well as inter-camp air transfers from Great Plains properties and those third parties in the greater Okavango Delta and Linyanti/Savuti regions, to this camp are automatically included in the nightly rate - subject to a minimum 2 night stay. Where air transfers are from properties located outside of these regions, supplementary charges will be applicable.
- \* For all multiple single-room reservations in shoulder and low season, a single supplement will apply from the 2nd single room.

### CHILD POLICY

- Children are accommodated from a minimum age of 6 years.
- Child rates are applicable for one child aged 15 and younger sharing with one adult in a guest tent.
- Children 16 and older will pay applicable adult rates and be accommodated in a separate tent.
- Activities will cater to family ability & safety. Some activities may have a specific age-related restriction - please refer to the general notes at the end of this manual.
- Families will be combined with other guests on all activities.



# BOTSWANA | Selinda Explorers Camp

SELINDA RESERVE, NORTHERN BOTSWANA



## SELINDA EXPLORERS CAMP

3 Guest Tents, 1 x 2-Bedroom Family Tent + Pilot / guide tent

11 January - 31 March 2026

01 April - 14 June 2026 &

01 October - 19 December 2026

15 June - 30 September 2026 &

20 December 2026 - 10 January 2027

### GUEST TENTS

- US\$ Rack per person per night sharing	\$ 1 180	\$ 1 420	\$ 2 050
- US\$ Rack single supplement*	\$ 590	\$ 710	\$ 1 025
- US\$ Rack children sharing with adults rate (6-15 years)	\$ 590	\$ 710	\$ 1 025

### 2-BEDROOM FAMILY TENT

- US\$ Rack per 2-bedroom family tent per night	\$ 3 540	\$ 4 260	\$ 6 150
---	----------	----------	----------

### COMMON CHARGES

- US\$ Nett Pilot/Guide rate per night	\$ 365
- US\$ Nett Private vehicle rate	\$ 980 per vehicle per night
- US\$ Nett Great Plains Foundation Conservation & Community Contribution	\$ 100 per person (of any age) per night

### NOTES

- Fully inclusive of accommodation, scheduled wildlife viewing activities, all meals, return airstrip road transfers, laundry services, non-alcoholic and alcoholic beverages including premium brand spirits and champagne.
- Exclusive of the mandatory nightly Great Plains Foundation conservation levy.
- The return scheduled seat in plane air transfers from Maun and/or Kasane Airports, as well as inter-camp air transfers from Great Plains properties and those third parties in the greater Okavango Delta and Linyanti/Savuti regions, to this camp are automatically included in the nightly rate - subject to a minimum 2-night stay. Where air transfers are from properties located outside of these regions, supplementary charges will be applicable.
- \* For all multiple single-room reservations in shoulder and low season, a single supplement will apply from the 2nd single room.

### CHILD POLICY

- Children are accommodated from a minimum age of 6 years.
- The 2-Bedroom Family Tent can accommodate a family of 4 guests.
- Should the family tent be unavailable, child rates are applicable for up to one child aged 15 and younger sharing with one adult in a guest tent.
- Children 16 and older will pay applicable adult rates and be accommodated in a separate tent.
- Activities will cater to family ability & safety. Some activities may have a specific age-related restriction - please refer to the general notes at the end of this manual.
- Families will be combined with other guests on all activities.

# BOTSWANA | Selinda Camp & Selinda Suite

SELINDA RESERVE, NORTHERN BOTSWANA  
RELAIS & CHATEAUX MEMBER



## SELINDA CAMP

3 Guest Suites with private pools + Pilot / guide tent

11 January - 31 March 2026

01 April - 14 June 2026 &

01 October - 19 December 2026

15 June - 30 September 2026 &

20 December 2026 - 10 January 2027

### GUEST SUITES

- US\$ Rack per person per night sharing	\$ 2 070	\$ 2 630	\$ 3 920
- US\$ Rack single supplement*	\$ 1 035	\$ 1 315	\$ 1 960
- US\$ Rack children sharing with adults rate (6-15 years)	\$ 1 035	\$ 1 315	\$ 1 960

### COMMON CHARGES

- US\$ Nett Pilot/Guide rate per night	\$ 365
- US\$ Nett Private vehicle rate	\$ 980 per vehicle per night
- US\$ Nett Great Plains Foundation Conservation & Community Contribution	\$ 100 per person (of any age) per night

## SELINDA SUITE

An exclusive use 2-bedroom Suite consisting of a shared lounge, dining area and private pool and including private safari drive vehicle, guide/host and chef.

- US\$ Rack per night on exclusive use only	\$ 9 935	\$ 12 625	\$ 18 815
- US\$ Nett Great Plains Foundation Conservation & Community Contribution	\$ 100 per person (of any age) per night		

### NOTES

- Fully inclusive of accommodation, scheduled wildlife viewing activities, all meals, return airstrip road transfers, laundry services, non-alcoholic and alcoholic beverages including premium brand spirits and champagne.
- Exclusive of the mandatory nightly Great Plains Foundation conservation levy and spa treatments.
- The return scheduled seat in plane air transfers from Maun and/or Kasane Airports, as well as inter-camp air transfers from Great Plains properties and those third parties in the greater Okavango Delta and Linyanti/Savuti regions, to this camp are automatically included in the nightly rate - subject to a minimum 2-night stay. Where air transfers are from properties located outside of these regions, supplementary charges will be applicable.
- \* For all multiple single-room reservations in shoulder and low season, a single supplement will apply from the 2nd single room.
- Each suite, including the Selinda Suite, includes complimentary use of a pair of high-quality binoculars and a professional camera set, including camera body and lenses. Photos will be digitally presented to guests on departure.

### CHILD POLICY

- Children are accommodated from a minimum age of 6 years.
- Activities will cater to family ability & safety. Some activities may have a specific age-related restriction - please refer to the general notes at the end of this manual.

#### Selinda Camp

- Child rates are applicable for up to one child 15 and younger sharing with two adults in a suite.
- Children 16 and older will pay applicable adult rates and be accommodated in a separate suite.
- Families will be combined with other guests on activities.

#### Selinda Suite

- The Selinda Suite is an exclusive use two-bedroom suite which can accommodate 4 adults sharing or a maximum of 5 for families with children. Exceptions may apply.
- Child rates and private vehicle requirements do not apply because the Suite is sold on exclusive use basis only.



# BOTSWANA | Zarafa Camp & The Dhow Suite at Zarafa

SELINDA RESERVE, NORTHERN BOTSWANA  
RELAIS & CHATEAUX MEMBER



## ZARAFKA CAMP

4 Guest Suites with private pools + Pilot / guide tent

11 January - 31 March 2026

01 April - 14 June 2026 &

01 October - 19 December 2026

15 June - 30 September 2026 &

20 December 2026 - 10 January 2027

### GUEST SUITES

- US\$ Rack per person per night sharing	\$ 2 070	\$ 2 630	\$ 3 920
- US\$ Rack single supplement*	\$ 1 035	\$ 1 315	\$ 1 960
- US\$ Rack children sharing with adults rate (6-15 years)	\$ 1 035	\$ 1 315	\$ 1 960

### COMMON CHARGES

- US\$ Nett Pilot/Guide rate per night	\$ 365
- US\$ Nett Private vehicle rate	\$ 980 per vehicle per night
- US\$ Nett Great Plains Foundation Conservation & Community Contribution	\$ 100 per person (of any age) per night

## THE DHOW SUITE AT ZARAFKA

An exclusive use 2-bedroom Suite consisting of a shared lounge, dining area and private pool and including private safari drive vehicle, guide/host and chef.

- US\$ Rack per night on exclusive use only	\$ 9 935	\$ 12 625	\$ 18 815
- US\$ Nett Great Plains Foundation Conservation & Community Contribution	\$ 100 per person (of any age) per night		

### NOTES

- Fully inclusive of accommodation, scheduled wildlife viewing activities, all meals, return airstrip road transfers, laundry services, non-alcoholic and alcoholic beverages including premium brand spirits and champagne.
- Exclusive of the mandatory nightly Great Plains Foundation conservation levy and spa treatments.
- The return scheduled seat in plane air transfers from Maun and/or Kasane Airports, as well as inter-camp air transfers from Great Plains properties and those third parties in the greater Okavango Delta and Linyanti/Savuti regions, to this camp are automatically included in the nightly rate - subject to a minimum 2 night stay. Where air transfers are from properties located outside of these regions, supplementary charges will be applicable.
- \* For all multiple single-room reservations in shoulder and low season, a single supplement will apply from the 2nd single room.
- Each suite, including The Dhow Suite at Zarafa, includes complimentary use of a pair of high-quality binoculars and a professional camera set, including camera body and lenses. Photos will be digitally presented to guests on departure.

### CHILD POLICY

- Children are accommodated from a minimum age of 6 years.
- Activities will cater to family ability & safety. Some activities may have a specific age-related restriction - please refer to the general notes at the end of this manual.

#### Zarafa Camp

- Child rates are applicable for up to one child 15 and younger sharing with two adults in a suite.
- Children 16 and older will pay applicable adult rates and be accommodated in a separate suite.
- Families will be combined with other guests on all activities.

#### The Dhow Suite at Zarafa

- The Dhow Suite at Zarafa is an exclusive use two-bedroom suite which can accommodate 4 adults sharing or a maximum of 5 for families with children. Exceptions may apply.
- Child rates and private vehicle requirements do not apply because the Suite is sold on exclusive use basis only.

# BOTSWANA | Duba Explorers Camp

NORTHERN DUBA CONCESSION, NORTHERN BOTSWANA



## DUBA EXPLORERS CAMP

5 Guest tents + Pilot / guide tent

11 January - 31 March 2026

01 April - 14 June 2026 &

01 October - 19 December 2026

15 June - 30 September 2026 &

20 December 2026 - 10 January 2027

### GUEST TENTS

- US\$ Rack per person per night sharing	\$ 1 450	\$ 1 860	\$ 2 685
- US\$ Rack single supplement*	\$ 725	\$ 930	\$ 1 342
- US\$ Rack children sharing with adults rate (6-15 years)	\$ 725	\$ 930	\$ 1 342

### COMMON CHARGES

- US\$ Nett Pilot/Guide rate per night	\$ 365
- US\$ Nett Private vehicle rate	\$ 980 per vehicle per night
- US\$ Nett Great Plains Foundation Conservation & Community Contribution	\$ 100 per person (of any age) per night

### NOTES

- Fully inclusive of accommodation, scheduled wildlife viewing activities, all meals, return airstrip road transfers, laundry services, non-alcoholic and alcoholic beverages including premium brand spirits and champagne.
- Exclusive of the mandatory nightly Great Plains Foundation conservation levy.
- The return scheduled seat in plane air transfers from Maun and/or Kasane Airports, as well as inter-camp air transfers from Great Plains properties and those third parties in the greater Okavango Delta and Linyanti/Savuti regions, to this camp are automatically included in the nightly rate - subject to a minimum 2-night stay. Where air transfers are from properties located outside of these regions, supplementary charges will be applicable.
- Duba Explorers Camp traverses the northern Duba Plains concession and is different to the area of the central part of the concession where Duba Plains Camp is located. Guests at either camp cannot cross from one side of the concession to the other due to deep water channels.
- \* For all multiple single-room reservations in shoulder and low season, a single supplement will apply from the 2nd single room.

### CHILD POLICY

- Children are accommodated from a minimum age of 6 years.
- Child rates are applicable for one child aged 15 and younger sharing with one adult in a guest tent.
- Children 16 and older will pay applicable adult rates and be accommodated in a separate tent.
- Activities will cater to family ability & safety. Some activities may have a specific age-related restriction - please refer to the general notes at the end of this manual.
- Families will be combined with other guests on all activities.



# BOTSWANA | Duba Plains Camp & Duba Plains Suite

DUBA CONCESSION, NORTHERN BOTSWANA  
RELAIS & CHÂTEAUX MEMBER



## DUBA PLAINS CAMP

5 Guest Suites with private pools + Pilot / guide tent

11 January - 31 March 2026

01 April - 14 June 2026 &

01 November - 19 December 2026

15 June - 31 October 2026 &

20 December 2026 - 10 January 2027

### GUEST SUITES

- US\$ Rack per person per night sharing	\$ 2 300	\$ 2 925	\$ 4 225
- US\$ Rack single supplement*	\$ 1 150	\$ 1 463	\$ 2 112
- US\$ Rack child sharing with adults rate (6-15 years)	\$ 1 150	\$ 1 463	\$ 2 112

### COMMON CHARGES

- US\$ Nett Pilot/Guide rate per night	\$ 365		
- US\$ Nett Private vehicle rate	\$ 980 per vehicle per night		
- US\$ Nett Great Plains Foundation Conservation & Community Contribution	\$ 100 per person (of any age) per night		

## DUBA PLAINS SUITE

An exclusive use 2-bedroom Suite consisting of a shared lounge, dining area and private pool and including private safari drive vehicle, guide/host and chef.

- US\$ Rack per night on exclusive use only	\$ 11 040	\$ 14 040	\$ 20 280
- US\$ Nett Great Plains Foundation Conservation & Community Contribution	\$ 100 per person (of any age) per night		

### NOTES

- Fully inclusive of accommodation, scheduled wildlife viewing activities, all meals, return airstrip road transfers, laundry services, non-alcoholic and alcoholic beverages including premium brand spirits and champagne.
- Exclusive of the mandatory nightly Great Plains Foundation conservation levy and spa treatments.
- The return scheduled seat in plane air transfers from Maun and/or Kasane Airports, as well as inter-camp air transfers from Great Plains properties and those third parties in the greater Okavango Delta and Linyanti/Savuti regions, to this camp are automatically included in the nightly rate - subject to a minimum 2-night stay. Where air transfers are from properties located outside of these regions, supplementary charges will be applicable.
- Duba Plains Camp traverses the central Duba Plains concession and is different to the area of the northern part of the concession where Duba Explorers Camp is located. Guests at either camp cannot cross from one side of the concession to the other due to deep water channels.
- \* For all multiple single-room reservations in shoulder and low season, a single supplement will apply from the 2nd single room.
- Each suite, including the Duba Plains Suite, includes complimentary use of a pair of high-quality binoculars and a professional camera set, including camera body and lenses. Photos will be digitally presented to guests on departure.

### CHILD POLICY

- Children are accommodated from a minimum age of 6 years.
- Activities will cater to family ability & safety. Some activities may have a specific age-related restriction - please refer to the general notes at the end of this manual.

#### Duba Plains

- Child rates are applicable for one child aged 15 and younger sharing with two adults in a suite.
- Children 16 and older will pay applicable adult rates and be accommodated in a separate suite.
- Families will be combined with other guests on all activities.

#### Duba Plains Suite

- The Duba Plains Suite is an exclusive use two-bedroom suite which can accommodate 4 adults sharing or a maximum of 5 for families with children. Exceptions may apply.
- Child rates and private vehicle requirements do not apply because the Suite is sold on exclusive use basis only.

# BOTSWANA | Sitatunga Private Island & Sitatunga Private Island Suite

SITATUNGA PRIVATE RESERVE, NORTHERN BOTSWANA  
RELAIS & CHATEAUX MEMBER



## SITATUNGA PRIVATE ISLAND

2 Guest Suites with private pools + Pilot / guide tent

11 January - 31 March 2026

01 April - 14 June 2026 &  
01 October - 19 December 2026

15 June - 30 September 2026 &  
20 December 2026 - 10 January 2027

### GUEST SUITES

- US\$ Rack per person per night sharing	\$ 1 660	\$ 2 100	\$ 3 140
- US\$ Rack single supplement*	\$ 830	\$ 1 050	\$ 1 570
- US\$ Rack child sharing with adults rate (6-15 years)	\$ 830	\$ 1 050	\$ 1 570

### COMMON CHARGES

- US\$ Nett Pilot/Guide rate per night	\$ 365		
- US\$ Nett private activity rate	\$ 545 per night		
- US\$ Nett Great Plains Foundation Conservation & Community Contribution	\$ 100 per person (of any age) per night		

## SITATUNGA PRIVATE ISLAND SUITE

An exclusive use 2-bedroom Suite consisting shared lounge, dining area and private pool including private boating and walking activities, guide/host and chef.

- US\$ Rack per night on exclusive use only	\$ 7 965	\$ 10 080	\$ 15 070
- US\$ Nett Great Plains Foundation Conservation & Community Contribution	\$ 100 per person (of any age) per night		

### NOTES

- Fully inclusive of accommodation, scheduled activities, all meals, laundry service, non-alcoholic and alcoholic beverages including premium brand spirits and champagne.
- Exclusive of the mandatory nightly Great Plains Foundation conservation levy and spa treatments.
- The return scheduled seat in plane air transfers from Maun and/or Kasane Airports, as well as inter-camp air transfers from Great Plains properties and those third parties in the greater Okavango Delta and Linyanti/Savuti regions to Duba Concession, are automatically included in the nightly rate - subject to a minimum 2-night stay. Where air transfers are from properties located outside of these regions, supplementary charges will be applicable.
- Guests will be transferred from Duba Concession to Sitatunga Private Island and back by helicopter at no additional charge.
- Sitatunga Private Island is a predominantly water-based activity safari camp offering boating and mokoro activities (water level dependent). Walking opportunities are also available on Sitatunga island.
- The Private activity rate includes private boating, mekoro and walking activities.
- Private activities included at the Sitatunga Private Island Suite includes private boating, mekoro and walking activities.
- \* For all multiple single-room reservations in shoulder and low season, a single supplement will apply from the 2nd single room.
- Each suite, including the Sitatunga Private Island Suite, includes complimentary use of a pair of high-quality binoculars and a professional camera set, including camera body and lenses. Photos will be digitally presented to guests on departure.

### CHILD POLICY

- Children are accommodated from a minimum age of 6 years.
- Activities will cater to family ability & safety. Some activities may have a specific age-related restriction - please refer to the general notes at the end of this manual.

#### Sitatunga Private Island

- Child rates are applicable for one child aged 15 and younger sharing with two adults in a suite.
- Children 16 and older will pay applicable adult rates and be accommodated in a separate suite.
- Families will be combined with other guests on all activities.

#### Sitatunga Private Island Suite

- The Sitatunga Private Island Suite is an exclusive use two-bedroom suite which can accommodate 4 adults sharing or a maximum of 5 for families with children. Exceptions may apply.
- Child rates do not apply because the Suite is sold on exclusive use basis only.



# 2026 BOTSWANA | Helicopter Rates

HELICOPTER TRANSFER MAUN, KASANE, INTER CAMP FLYING & SCENIC FLIGHT RATES

VALID: 01 JANUARY - 31 DECEMBER 2026

DEPARTURE	DESTINATION	SUPPLEMENTARY RACK RATES FOR HELICOPTER TRANSFERS	APPROXIMATE ONE WAY FLYING TIME	ROUTE DESCRIPTION
Maun	Duba Concession & Sitatunga Private Island	\$ 480 * #	40 Minutes	Great scenery along the length of the Okavango
Maun	Okavango Explorers Camp	\$ 720 * #	50 Minutes	Great scenery along the length of the Okavango
Maun	Selinda Reserve	\$ 701 * #	50 Minutes	Mixed scenery between the Okavango and Linyanti showing 3 diverse ecosystems
Duba Concession	Selinda Reserve	\$ 270 #	35 Minutes	Great scenery from the Okavango to the Linyanti following the Selinda Spillway
Sitatunga Private Island	Selinda Reserve	\$ 56 #	35 Minutes	Great scenery from the Okavango to the Linyanti following the Selinda Spillway
Duba Concession & Sitatunga Private Island	Okavango Explorers Camp	Included in nightly accommodation rate #	15 Minutes	Great scenery along the northern fringes of the Okavango Delta
Selinda Reserve	Okavango Explorers Camp	\$ 445 #	15 Minutes	Mixed scenery along the length of the Selinda Spillway.
Kasane	Duba Concession	\$ 1 199 * #	1 Hour 35 Minutes	Enjoy scenery along the Chobe, Linyanti flood plains and Selinda Spillway.
Kasane	Sitatunga Private Island	\$ 1 215 * #	1 Hour 35 Minutes	Enjoy scenery along the Chobe, Linyanti flood plains and Selinda Spillway.
Kasane	Okavango Explorers Camp	\$ 1 199 * #	1 Hour 20 Minutes	Enjoy scenery along the Chobe, Linyanti flood plains and Selinda Spillway.
Kasane	Selinda Reserve	\$ 508 * #	1 Hour 10 Minutes	Enjoy scenery along the Chobe and Linyanti flood plains
EXPERIENCES		RACK RATES PER PERSON	FLYING TIME	ROUTE DESCRIPTION
Scenic Flights : Enjoy An Aerial Viewing Experience From Duba Concession or Selinda Reserve or Sitatunga Private Island		\$ 390 - 30 min   \$ 580 - 45 min   \$ 760 - 60 min		Great scenery across the northern part of the Okavango Delta (ex Duba Concession and Sitatunga Private Island) or Linyanti/Savuti and Selinda Spillway (ex Selinda Reserve)
Additional Champagne Stop - To be added to any routing		\$ 56		15 minute champagne stop on a palm island en route
Experiences: Spillway to Panhandle Departing from Selinda Camp, Selinda Explorers Camp or Zarafa Camp		\$ 1 395	2 Hours incl. picnic	Enjoy a unique aerial perspective of the seasonal floodplains, continuing over permanent waterways and finally to the meandering Okavango River.
Experiences: Floodplains to Panhandle departing from Duba Concession, Okavango Explorers Camp or Sitatunga Private Island		\$ 1 395	2 Hours incl. picnic	From seasonal floodplains to permanent waterways, experience the total extent of this incredible inland delta before it disperses over the Kalahari Desert.

## NOTES

- # The nightly rates at Great Plains Botswana-owned camps include scheduled seat-in-plane fixed-wing air transfers. The above helicopter transfer rates are supplementary upgrade costs on those specific routes should guests prefer a Helicopter transfer rather than a fixed-wing aircraft.
- Refer to Heli The Thrillway Offer to qualify for a complimentary helicopter transfer.
- The above supplementary rates are nett, per person per seat, and are subject to a minimum of 2 guests travelling at the same time.
- All fares and taxes are subject to change without prior notice and will be confirmed at the time of reservation.
- Rates include VAT at 12%.
- \* The \$25 per person domestic departure tax from Maun and/or Kasane is EXCLUDED. Our reservations staff will add this automatically to your arrangements.
- Guests are provided with headsets and pilot commentary of the area throughout their flight.
- Luggage limit of 20kgs per guest in SOFT bags, including carry-on luggage and camera equipment.

- The above rates are only valid for bookings made more than 72 hours prior to departure.
- The Selinda Reserve Helicopter air transfer route refers to guests staying at Selinda Explorers Camp, Selinda Camp, Selinda Suite, Zarafa Camp and The Dhow Suite at Zarafa.
- The Duba Concession Helicopter air transfer route refers to guests staying at Duba Plains Camp, Duba Plains Suite, and Duba Explorers Camp.
- Sitatunga Private Island Helicopter route air transfer route refers to guests staying at Sitatunga Private Island or the Sitatunga Private Island Suite.
- Okavango Explorers Helicopter air transfer route refers to guests staying at Okavango Explorers Camp.
- Passengers over 90 kg may have to purchase an additional seat. If this is the case, please inform us prior to travel.
- The standard helicopters used are the Robinson R44 and Bell 407 models. A Bell 505 helicopter, which seats a total of 4 guests, can be requested, subject to a minimum of 3 guests being charged for all the above services.
- The above transfer routes also operate in reverse.

# 2026 BOTSWANA | Air Transfers

## SCHEDULED SEAT IN PLANE INTER CAMP AIR TRANSFER RATES

VALID: 01 JANUARY - 31 DECEMBER 2026



DEPARTURE/DESTINATION	DESTINATION/DEPARTURE	APPROXIMATE FLYING TIMES - ONE WAY	FIXED WING AIR TRANSFER RATES	SUPPLEMENTARY RATES FOR FIXED WING AIR TRANSFERS
MAUN	DUBA PLAINS	35 Minutes	No Charge - Included in the nightly rate	
MAUN	OKAVANGO EXPLORERS	35 Minutes		
MAUN	SELINDA RESERVE	45 Minutes		
DUBA PLAINS	SELINDA RESERVE	30 Minutes		
KASANE	DUBA PLAINS	1 Hour 20 Minutes		
KASANE	SELINDA RESERVE	55 Minutes		
KASANE	OKAVANGO EXPLORERS	65 Minutes		
OKAVANGO EXPLORERS CAMP	SELINDA RESERVE	15 Minutes	**	
OKAVANGO EXPLORERS CAMP	DUBA PLAINS CAMP	10 Minutes		\$ 40
OKAVANGO EXPLORERS CAMP	SITATUNGA PRIVATE ISLAND	20 Minutes		\$ 179
LIVINGSTONE	KASANE	20 Minutes	\$ 463 #	
KASANE	LIVINGSTONE		\$ 463 §	
VICTORIA FALLS	KASANE	20 Minutes	\$ 238 #	
KASANE	VICTORIA FALLS		\$ 238 §	

### NOTES

- The above one-way services are nett per person, per seat rates and valid for bookings made more than 72 hours prior to departure.
- Where applicable, rates include VAT at 12%.
- § The international departure tax of \$30 per person for flights departing Kasane to Livingstone and Kasane to Victoria Falls is EXCLUDED. Our reservations staff will add this automatically to your arrangements.
- # The international departure tax from Livingstone and from Victoria Falls are EXCLUDED. The guest must settle this directly at the departure airport in cash.
- Single supplements are applicable; a minimum 2 guests charge applies to Kasane - Livingstone - Kasane and/or Kasane - Victoria Falls - Kasane sectors.
- Passengers travelling on the scheduled inter-camp fixed wing air transfer service may make up to four stops en route to their final destination, slightly affecting the total flying time.
- A luggage limit of 20kgs per guest in SOFT bags, including carry-on luggage and camera equipment. Dimensions of luggage 30cmx35cmx70cm.

- Passengers over 115 kg may have to purchase an additional seat. If this is the case, please inform us prior to travel.
- The Selinda Reserve fixed wing route applies to guests staying at Selinda Explorers Camp, Selinda Camp, Selinda Suite, Zarafa and The Dhow Suite at Zarafa.
- The Duba Plains fixed wing route applies to guests staying at Duba Plains Camp, Duba Plains Suite, Duba Explorers Camp, Sitatunga Private Island, and the Sitatunga Private Island Suite. Guests staying at Duba Explorers Camp, Sitatunga Private Island and the Sitatunga Private Island Suite and using the fixed wing air transfer service will be transferred from the Duba airstrip to these camps by Helicopter at no additional charge.
- \*\*The air transfers between Duba Plains Camp, Okavango Explorers Camp, Duba Explorers Camp and Sitatunga Private Island are complimentary via direct helicopter transfers. Should guests prefer a fixed-wing air transfer between these camps, the above supplementary one-way per-person costs will apply.
- The Okavango Explorers fixed wing route is for guests staying at Okavango Explorers Camp.
- The fares may be subject to change without prior notice should fuel costs and government taxes increase.
- The above routes also operate in reverse.



# NOTES

## GENERAL NOTES RELATED TO ALL RATES IN THIS MANUAL



### GENERAL NOTES

- All city services and ground transfers, conservation/park fees, levies, and air transfers are excluded unless otherwise noted.
- Standard Terms and Conditions apply - a copy of which is available on request.
- Wi-Fi is available in all our camps. Wi-Fi is limited to guests' accommodation.
- To confirm a reservation, a 20% deposit must be paid to secure safari dates at the time of notification, regardless of when those travel dates are scheduled.
- It is a condition of confirmation that guests must hold fully comprehensive travel and medical insurance from the date of confirmation for their planned travel dates to cover any unplanned and unscheduled events before and during their journeys with us.
- Please refer to our fact sheets for detailed information on each camp.
- Rates are subject to change due to unforeseen circumstances such as, but not limited to, currency fluctuations, fuel levies, surcharges, government decree, or items of this nature.
- Comprehensive medical and travel insurance (including temporary Flying Doctor Membership where relevant in Kenya) is required for all guests travelling to the properties and is a condition of travel and stay.
- Private vehicle rates are nett and non-commissionable.
- All free flying offers apply only to the full, standard nightly guest accommodation rates.

### GREAT PLAINS CONSERVATION PILOT/GUIDE ACCOMMODATION

- Pilot/guide accommodation rates are nett and non-commissionable.
- Pilot/guide accommodation rates excludes all park fees, free flying offers and additional activities.
- Great Plains Foundation Conservation & Community Contribution are applicable to all private pilot / guide stays.

### GREAT PLAINS CONSERVATION CHILD POLICY

- All our camps welcome children from 6 years. Please refer to the applicable child policy section on each camp's page. Participation remains at the camp manager's discretion.
- These general guidelines apply to all of the Great Plains Conservation properties concerning children and families where applicable:
- Families at all our camps will be on shared activities with other guests.
- Children 15 and younger must share a room with at least one adult.
- Each of our camps has a unique child policy based on the size, location and structure of the camp. The child sharing rates are based on the allowable number of children that a property's specific room can accommodate. Please refer to the individual camp pages for guidance on how child rates are charged.
- We evaluate each booking to ensure we deliver the best possible safari experience to all our guests in camp.
- Our camps are located in wildlife zones that are not fenced in and there are no child care facilities in our camps. Parents/guardians must be watchful of and responsible for their children at all times.
- Our child policy summary in terms of wildlife experience activities is as follow:

### BOTSWANA & ZIMBABWE

- Scheduled wildlife viewing activities, including safari drives, guided walks, and power boating, are available to guests from 6 years when accompanied by their parents or guardians. Canoe and mokoro activities specifically welcome guests aged 8 years and above.

### KENYA

- Guests of all ages are welcome to participate in all scheduled wildlife viewing activities.
- Walking activities are not possible at our Maasai Mara based camps. The walking activity at ol Donyo Lodge is available to all guests, at manager and guide's discretion.
- Horse riding is available to guests from 12 years old and riders need to have previous experience riding horses. No beginners.