



RACK RATES 2025 SEASON

01 NOVEMBER 2024 – 31 OCTOBER 2025

UPDATED NOVEMBER 2024



NAMIBIA

Discover true Namibia. Experience its magnificent landscapes and heart-warming culture with those who know it best, people who are passionate about conserving the land and bringing its captivating stories to life. With comfortable properties located at all of Namibia's intriguing places of interest, the Gondwana Collection offers unique accommodation experiences. Different in theme, but equal in sincere warmth of service, each promises an exciting and authentic Namibian experience that will turn every moment into a golden memory.



INDEX

WINDHOEK

OKAPUKA SAFARI LODGE	4
THE WEINBERG	5
THE WEINBERG URBAN POD	6

KALAHARI DESERT

KALAHARI ANIB LODGE & CAMPING	7
REVERIE KALAHARI POD	8
KALAHARI CAMPING2GO	9
KALAHARI FARMHOUSE & CAMPING	10

FISH RIVER CANYON

CANYON LODGE	11
CANYON VILLAGE	12
CANYON ROADHOUSE & CAMPING	13

AUS / WILD HORSES

KLEIN-AUS VISTA: DESERT HORSE INN & CAMPING	14
KLEIN-AUS VISTA: GEISTERSCHLUCHT CABINS	15
KLEIN-AUS VISTA: EAGLES NEST	16

NAMIB / SOSSUSVLEI AREA

NAMIB DESERT LODGE & CAMPING	17
NAMIB DESERT CAMPING2GO	18
NAMIB DUNE STAR CAMP	19
THE DESERT GRACE	20
DESERT WHISPER	21

SWAKOPMUND

THE DELIGHT	22
THE PEARLS BEACH PODS	23

DAMARALAND

DAMARA MOPANE LODGE	24
PALMWAG LODGE & CAMP & CAMPING	25
PALMWAG CAMPING2GO	26
PALMWAG UNDER-CANVAS SLEEP-OUT	27

KAOKOLAND

OMARUNGA EPUPA-FALLS CAMP & CAMPING	28
-------------------------------------	----

ETOSHA NATIONAL PARK

ETOSHA SAFARI LODGE	29
THE EKIPI ETOSHA POD	30
ETOSHA SAFARI CAMP & CAMPING	31
ETOSHA SAFARI CAMPING2GO	32
ETOSHA KING NEHALE	33

OKAVANGO

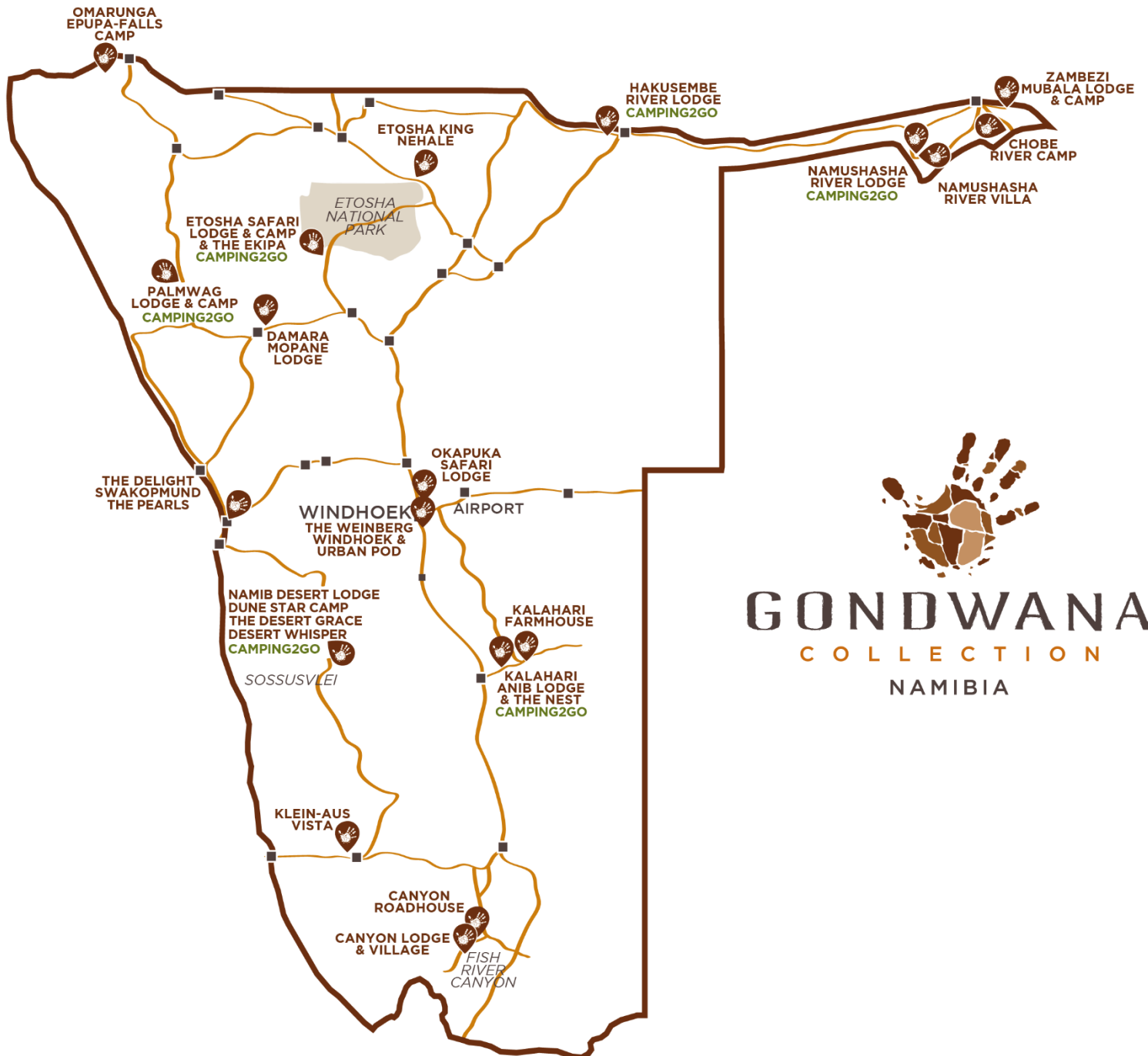
HAKUSEMBE RIVER LODGE & CAMPING	34
HAKUSEMBE CAMPING2GO	35

ZAMBEZI / CAPRIVI

NAMUSHASHA RIVER LODGE & CAMPING	36
NAMUSHASHA RIVER CAMPING2GO	37
NAMUSHASHA RIVER VILLA	38
ZAMBEZI MUBALA LODGE	39
ZAMBEZI MUBALA CAMP & CAMPING	40
CHOBE RIVER CAMP & CAMPING	41



OVERVIEW MAP





OKAPUKA SAFARI LODGE

32 KM NORTH OF WINDHOEK ON THE B 1 (KHOMAS)

Experience Africa's wild side at the doorstep of Namibia's capital, Windhoek. Okapuka Safari Lodge takes you on a nostalgic journey, reflecting the majestic tranquillity of the mysterious African continent and the exciting wildlife. The iconic game drive will take your breath away as you might encounter most of Namibia's beautiful wildlife right here - giraffes, ostriches, white rhinos, and all indigenous antelope species.

OKAPUKA SAFARI LODGE	RATE N\$ PP
All rates N\$ and include VAT & levies Rate validity 01.11.2024 - 31.10.2025	
Standard Safari double room - sharing: bed & breakfast pp/night.	1755.00
Standard Safari room - single: bed & breakfast pp/night.	2193.00
Classic Safari double/twin - sharing: bed & breakfast pp/night.	2144.00
Classic Safari room - single: bed & breakfast pp/night.	2680.00
Luxury Safari Suite - sharing: bed & breakfast pp/night	2629.00
Luxury Safari Suite - single: bed & breakfast pp/night.	3287.00
Dinner pp - pre-booked, alternatively à la carte at the lodge	545.00
Lunch pp - pre-booked, alternatively à la carte at the lodge	217.00
Full 3 Course Lunch pp - pre-booked, alternatively à la carte at the lodge	325.00
Lunch pack pp	215.00

Please see the room configuration at the end of the rate sheet

ACTIVITIES AT OKAPUKA SAFARI LODGE IN OKAPUKA PRIVATE GAME RESERVE:

ACTIVITIES ARE SUBJECT TO AVAILABILITY. PRICES MAY VARY. ALL RATES ARE N\$ PER PERSON.

DESCRIPTION	DEPARTURE	DURATION	RATE N\$ PP
Sunrise Drive (guided): Enjoy this tour in an open 4 x 4 vehicle accompanied by an experienced guide. Gain insight and knowledge about Fauna and Flora. Touch Africa's soul. Refreshments and a light snack will be provided	± 30 min before sunrise	± 2 ½ hrs	820.00
Game Drive (guided): Join us on a guided drive in an open vehicle through the riverine area of Okapuka. Refreshments and light snacks will be provided. Departure 10 am (and 2 pm by special request). Duration 2 hours.	10:00 AM	± 2 hrs	820.00
Sunset Drive (guided): Experience a real Namibian sunset with a delicious drink in your hand. This outing allows you to forget the rest of the world and be carried away by nature's beauty.	± 2 ½ hrs before sunset	± 2 ½ hrs	820.00





THE WEINBERG

13 JAN JONKER STREET (WINDHOEK)

Situated in the upmarket suburb of Klein Windhoek, 30 minutes from Hosea Kutako International Airport, The Weinberg Hotel sets a new benchmark for luxury accommodation in the Namibian capital. The Weinberg has 41 rooms, the hotel's iconic styling seamlessly blends old-world splendor with modern lines and state-of-the-art amenities, ensuring an unparalleled guest experience.

THE WEINBERG All rates N\$ and include VAT & levies Rate validity 01.11.2024 - 31.10.2025	RATE N\$
Courtyard double/twin room - sharing: bed & breakfast pp/night.	2570.00
Courtyard room - single: bed & breakfast pp/night.	3601.00
Superior upper-level double/twin room - sharing: bed & breakfast pp/night.	2821.00
Superior upper-level room - single: bed & breakfast pp/night.	3945.00
Loft double/twin/family - sharing: bed & breakfast pp/night.	3593.00
Loft - single: bed & breakfast pp/night.	5014.00
Terrace Suite per room/night: bed & breakfast including minibar – max 2 pax/room	15000.00
Terrace Suite Supplement for additional room/night: bed & breakfast including minibar – max 2 pax/room	5000.00

*No single supplement for the Terrace Suite and can accommodate a max of 4 pax

Please see the room configuration at the end of the rate sheet

TRANSFERS All rates N\$ and include VAT & levies Rate validity 01.11.2024 - 31.10.2025	RATE N\$ pp Low Season 01 November 2024 – 30 June 2025	RATE N\$ pp High Season 01 July 2025 – 31 October 2025
Hosea Kutako International Airport to Windhoek (return)		
1 person	539.00	583.00
2 - 3 persons pp	352.00	374.00
Eros Airport to The Weinberg (return)		
1 person	204.00	220.00
2 - 3 persons pp	171.00	193.00
City Transfer (one-way)		
1 person	204.00	220.00
2 - 3 persons pp	171.00	193.00

TRANSFERS ARE SUBJECT TO AVAILABILITY AND NEED TO BE PRE-BOOKED. PRICES MAY VARY.

THE WEINBERG PROVIDES A DEVOTED HOST WHO SUPPORTS GUESTS WITH BOOKING ACTIVITIES, RESERVING DINNERS, AND CUSTOMIZING SERVICES.





THE WEINBERG URBAN POD

13 JAN JONKER STREET (WINDHOEK)

Spend evenings sipping on a choice selection of spirits, while watching the Windhoek city lights submerge the valley into a sea of twinkling stars. The Weinberg Urban Pod finds itself located on Roman Hill, in the impressive Am Weinberg Estate. An exclusive haven for the discerning traveler or business professional, with an unparalleled level of offerings. The Pod offers a tranquil escape from the bustle of city life while ensuring proximity to the business hub of the capital.

- The Weinberg Urban Pod is part of the Gondwana Secret Collection, based in Windhoek.
- There is only one pod, which consists of a spacious three-story suite, including an open plan kitchen, dining, and lounge area; en suite rooms with an outdoor area fully equipped with barbeque facilities, as well as a private plunge pool.
- The Weinberg Urban Pod can be booked for up to 6 guests in 3 bedrooms.
- It is fully inclusive of all food and beverages that the suite is pre-stocked with. Breakfast at The Weinberg Hotel is optional and included.
- A dedicated host is available to guests of The Urban Pod, to support guests with booking activities, reserving dinners, and customizing services.
- There is a fully equipped kitchen and a well-provisioned bar. Meals are pre-prepared according to the preferences of the guests.
- To guarantee complete exclusivity and intimacy for the guests, there is no service staff or chef based at the Urban Pod during the stay of the guests, however, guests always have access to contact with their host.
- A private chef can be arranged upon request to prepare and serve meals at an additional cost.
- Free WIFI is available and USB ports for charging equipment are provided.
- The Weinberg Urban Pod is equipped with air conditioning throughout.

THE WEINBERG URBAN POD All rates N\$ and include VAT & levies Rate validity 01.11.2024 - 31.10.2025	RATE N\$
Per room/night, inclusive of food and beverage, max 2 pax/room	27500.00
Supplement for additional room/night (2 rooms booked) inclusive of food and beverage, max 2 pax/room	16500.00
Supplement for additional room/night (3 rooms booked) inclusive of food and beverage, max 2 pax/room	11000.00

*No single supplement for The Weinberg, Urban Pod and can accommodate max 2 pax/room

FOR BOOKINGS, PLEASE CONTACT

weinbergpod@gcnam.com

CONFERENCING FACILITIES ARE SUBJECT TO AVAILABILITY AND NEED TO BE PRE-BOOKED WITH

claretta.neels@gcnam.com





KALAHARI ANIB LODGE & CAMPING

30 KM NORTHEAST OF MARIENTAL ON THE C 20 (KALAHARI)

Savor the Kalahari Desert at this easily accessible lodge. 32 standard rooms flank a shady courtyard, with another 19 comfort rooms overlooking the Kalahari savannah. Stretch your legs by going for a walk or joining the afternoon drive to experience the red Kalahari sands aglow with an inner fire.

KALAHARI ANIB LODGE	RATE N\$ PP
All rates N\$ and include VAT & levies Rate validity 01.11.2024 - 31.10.2025	
Standard room double/twin/triple/family - sharing: bed & breakfast pp/night.	2338.00
Standard room - single: bed & breakfast pp/night.	2922.00
Comfort room double/twin/triple/family - sharing: bed & breakfast pp/night.	2915.00
Comfort room - single: bed & breakfast pp/night.	3645.00
Dinner pp - buffet	545.00
Dune Dinner pp - min 10 pax, max 60 pax only	1320.00
Dune Dinner (BBQ) in combination with Sundowner Drive including refreshments and transfer to lodge, pp - min 10 pax, max 60 pax only	1870.00
Lunch pp - alternatively à la carte at the lodge	217.00
Full 3 Course Lunch pp - alternatively à la carte at the lodge	325.00
Lunch pack pp	215.00
Kalahari Anib Campsite pp/night.	325.00

Please see the room configuration at the end of the rate sheet

ACTIVITIES AT KALAHARI ANIB LODGE IN GONDWANA KALAHARI PARK:

ACTIVITIES ARE SUBJECT TO AVAILABILITY. PRICES MAY VARY. ALL RATES ARE N\$ PER PERSON.

DESCRIPTION	DEPARTURE	DURATION	RATE N\$ PP
Sunrise/Sundowner Drive (guided): Enjoy the panoramic views across the Kalahari dunes on this guided drive in an open vehicle. Refreshments and a light snack will be provided. Book in advance or at the lodge.	AM (± 30 min before sunrise) PM (± 3hrs before sunset)	± 3hrs	890.00
Hiking Trails (unguided; only to be booked directly at the lodge): Explore the Kalahari on foot on your initiative. A trail map is available at the reception.	Explore in your own time	return before nightfall	free of charge
Dune Walk (guided): Explore the Kalahari on foot with a guide. Refreshments and a light snack will be provided.	Morning only	± 2hrs	790.00
Desert Night Walk (short, guided walk, only bookable directly at the Lodge) Prepare to be amazed by the sight of scorpions or other nocturnal creatures glowing in the dark under UV light.	after dinner	±45 min	275.00
Morning Drive for Families (guided): subject to availability: After a leisurely drive guests will arrive at one of the red dunes. The red sand of the dunes invites all children to play. The family will spend some relaxing time on the dunes with coffee and hot chocolate.	Morning only	± 2hrs	830.00





REVERIE KALAHARI POD

30 KM NORTHEAST OF MARIENTAL ON THE C 20 (KALAHARI)

Tucked away between the red dunes, The Reverie Kalahari Pod offers a unique and luxurious experience for two. Inspired by the Khoi San tradition of using ostrich eggs, this multi-level sensory sanctuary in the Kalahari Desert allows guests to disconnect from modern life and connect. Whispers of breezes, red sands, and Kalahari birds create a private universe. Enjoy an inclusive experience with tailored meals and activities. The plunge pool overlooks a private waterhole where giraffes and oryx may appear under a star-filled sky. Take a deep breath—your desert sanctuary awaits.

- Reverie Kalahari Pod is part of the Gondwana Secret Collection, based in the Kalahari Desert.
- There is only one Kalahari Pod. A spacious three spacious single-story dome-like structures offer an open plan kitchen, dining, and entertainment lounge area; a free flow en suite bedroom with balcony and an outdoor area fully equipped with barbeque facilities, as well as a private plunge pool, overnight dream area, and firepit.
- Guests arrive at the Kalahari Anib Collection, where the dedicated host will receive guests and ensure their stay is to their liking. From there, follow the en-route signage to the Kalahari Pod's Private Reception.
- Check-in is at 14:00 and Check-out time is 10:00 local time.
- Kalahari Pod is a 2-guest exclusive lodge. Children under 14 years old are not permitted, but children 14 years and older are welcome if the total number of guests is 2.
- It is fully inclusive of all meals & drinks, with exclusive activities on offer within the Gondwana Kalahari Park.
- There is an equipped kitchen and a fully stocked bar, as well as barbeque facilities in a terraced outdoor space. Meals are pre-prepared according to the preferences of the guests.
- To guarantee complete exclusivity and intimacy, there is no service staff or chef based at the Kalahari Pod, during the stay of the guests, however, guests always have radio contact with their host.
- A private chef can be arranged upon request to prepare and serve dinner.
- Free WIFI is available and USB ports for charging equipment are provided.
- Reverie Kalahari Pod is equipped with air conditioning.

REVERIE KALAHARI POD	RATE N\$
All rates N\$ and include VAT & levies Rate validity 01.11.2024 - 31.10.2025	
Per room/night, fully inclusive, max 2 pax/room	27 500.00

ACTIVITIES AT REVERIE IN GONDWANA KALAHARI PARK:

ACTIVITIES ARE SUBJECT TO AVAILABILITY. PRICES MAY VARY. ALL RATES ARE N\$ PER PERSON.

DESCRIPTION	DEPARTURE	DURATION	RATE N\$ PP
Sunrise/Sundowner Drive (guided): Enjoy the panoramic views across the Kalahari dunes on this guided drive in an open vehicle with a dedicated guide. Refreshments and a light snack will be provided.	AM (± 30 min before sunrise) PM (± 3hrs before sunset)	± 3hrs	Included
Hiking Trails (unguided; only to be booked directly at the lodge): Explore the Kalahari on foot on your initiative. A trail map is available at the reception.	Explore in your own time	return before nightfall	free of charge
Dune Walk (guided): Explore the Kalahari on foot with your private guide. Refreshments and a light snack will be provided.	Morning only	± 2hrs	included





KALAHARI CAMPING2GO

AT KALAHARI ANIB LODGE, 30 KM NORTHEAST OF MARIENTAL ON THE C 20 (KALAHARI)

With Camping2Go, the amazing outdoor serenity of camping is paired with a hassle-free self-catering product. Each of the 4 tents hosts 4 beds, an en-suite bathroom, and a fully equipped kitchen. To top it off, guests at Kalahari Anib Camping2Go have full access to all the facilities (activities, pool, bar, restaurant, etc.) available at Kalahari Anib Lodge.

KALAHARI CAMPING2GO All rates N\$ and include VAT & levies Rate validity 01.11.2024 - 31.10.2025	RATE N\$ PP
Camping2Go - Self-catering tents with en-suite bathrooms - sharing: bed only, pp/night.	985.00
Camping2Go - Self-catering tents with en-suite bathrooms - single: bed only, pp/night.	1969.00
Dinner pp - buffet at Kalahari Anib Lodge	545.00
Breakfast pp - buffet at Kalahari Anib Lodge	270.00
Lunch pp - alternatively à la carte at the lodge	217.00

ACTIVITIES AT KALAHARI ANIB LODGE IN GONDWANA KALAHARI PARK:

ACTIVITIES ARE SUBJECT TO AVAILABILITY. PRICES MAY VARY. ALL RATES ARE N\$ PER PERSON.

DESCRIPTION	DEPARTURE	DURATION	RATE N\$ PP
Sunrise/Sundowner Drive (guided): Enjoy the panoramic views across the Kalahari dunes on this guided drive in an open vehicle. Refreshments and a light snack will be provided. Book in advance or at the lodge.	AM (± 30 min before sunrise) PM (± 3hrs before sunset)	± 3hrs	890.00
Hiking Trails (unguided; only to be booked directly at the lodge): Explore the Kalahari on foot on your initiative. A trail map is available at the reception.	Explore in your own time	return before nightfall	free of charge
Dune Walk (guided): Explore the Kalahari on foot with a guide. Refreshments and a light snack will be provided.	Morning only	± 2hrs	790.00
Desert Night Walk (short, guided walk, only bookable directly at the Lodge) Prepare to be amazed by the sight of scorpions or other nocturnal creatures glowing in the dark under UV light.	after dinner	±45 min	275.00
Morning Drive for Families (guided): subject to availability: After leisurely driving guests will arrive at one of the red dunes. The red sand of the dunes invites all children to play. The family will spend relaxing time on the dunes with coffee and hot chocolate.	Morning only	± 2hrs	830.00





KALAHARI FARMHOUSE & CAMPING

IN STAMPRIET 53 KM NORTHEAST OF MARIENTAL (KALAHARI)

A lush secret garden in the arid Kalahari. This intimate lodge has 11 chalets finished with colorful quilts, fireplaces, and a cozy farmhouse charm. Visit the adjacent Self-Sufficiency Centre, and take a short, guided tour of the smokehouse and butchery. Join a trip into the Gondwana Kalahari Park to watch the sunset over the fiery red dunes, and rest or take part in any of the other activities offered at Kalahari Anib Lodge.

KALAHARI FARMHOUSE & CAMPING All rates N\$ and include VAT & levies Rate validity 01.11.2024 - 31.10.2025	RATE N\$ PP
Double/twin/triple/family room - sharing: bed & breakfast pp/night.	2125.00
Single room - bed & breakfast pp/night.	2655.00
Dinner pp - alternatively à la carte at the lodge	395.00
Lunch pp - alternatively à la carte at the lodge	217.00
Full 3 Course Lunch pp - alternatively à la carte at the lodge	325.00
Lunch pack pp	215.00
Kalahari Farmhouse Campsite pp/night.	325.00

Please see the room configuration at the end of the rate sheet

ACTIVITIES AT KALAHARI FARMHOUSE IN GONDWANA KALAHARI PARK:

ACTIVITIES AT KALAHARI FARMHOUSE (IN GONDWANA KALAHARI PARK):

Kindly note that guests are welcome to take part in the activities offered at **Kalahari Anib Lodge** ± 30 km away. As there are **no activities at Kalahari Farmhouse** Guests are required to arrange their own transport to Kalahari Anib Lodge.

Guests are welcome to visit the butchery and smokery at the Self Sufficiency Centre, where much of the meat for all the Gondwana Lodges is processed and packed.





CANYON LODGE

20 KM EAST OF THE FISH RIVER CANYON ON THE C 37 (FISH RIVER CANYON)

A gem in the rugged environment, Canyon Lodge is a fusion of farmhouse flavor and natural splendor. Walkways lead to natural stone chalets nestled amongst granite boulders. Celebrate the dawn amongst the quiver trees and the awe-inspiring adventure of life from the rim of the Fish River Canyon.

CANYON LODGE	RATE N\$ PP
All rates N\$ and include VAT & levies Rate validity 01.11.2024 - 31.10.2025	
Double/twin/triple/family room - sharing: bed & breakfast pp/night.	2705.00
Single room: bed & breakfast pp/night.	3381.00
Dinner pp	545.00
Lunch pp - alternatively à la carte at the lodge	217.00
Full 3 Course Lunch pp - alternatively à la carte at the lodge	325.00
Lunch pack pp	215.00

Please see the room configuration at the end of the rate sheet

ACTIVITIES AT CANYON LODGE:

ACTIVITIES ARE SUBJECT TO AVAILABILITY. PRICES MAY VARY. ALL RATES ARE N\$ PER PERSON.
ANY CHANGES IN NATIONAL PARK FEES WILL BE REFLECTED IN OUR RATES ACCORDINGLY.

DESCRIPTION	DEPARTURE	DURATION	RATE N\$ PP
Morning Walk (guided): about 6 km, takes you right into Gondwana Canyon Park. You are accompanied by a guide who will gladly share his knowledge about the fascinating desert landscape. This tour is not going to the Fish River Canyon.	± 07:30 AM	±2-3hr	270.00
Sunrise Hike (guided): We drive you to a spot with a grand view and watch the sunrise while enjoying coffee and tea. Then we walk back the short distance to the lodge. This tour is not going to the Fish River Canyon.	30min before sunrise	±3hrs	510.00
The trail from the Village to the Lodge or vice versa (unguided): A hiking trail takes you from Canyon Village up to a mountain plateau with a breathtaking view of the vast plains adjacent to the canyon. At 'Archway Rock' you start to make your way back into the plain and to the lodge.	In your own time	±2-3hrs	free of charge
Morning/Afternoon Canyon Drive (guided): Especially for all who want a break from the wheel or those on a fly-in safari. You are taken to the two major lookout points along the Fish River Canyon. Our guide will tell you all about the canyon's fascinating geology. Refreshments, a light snack, and park entrance fees are included.	consult reception for departure times	±3hrs	1445.00
Sundowner Drive in Gondwana Canyon Park (guided): This drive is the perfect opportunity for you to acquaint yourself with Gondwana Canyon Park. This tour does not include the Fish River Canyon. Refreshments and a light snack are included.	2-3hrs before sunset	±2-3hrs	830.00
Sundowner Walk (escorted): Everyone is invited to wrap up the day with a short excursion to our very own 'local' mountain where we have a drink and watch the sun go down. Refreshments will be charged to the room.	30min before sunset	Return after sunset	free of charge
Night Walk (short, guided walk, only bookable directly at the Lodge) Prepare to be amazed by the sight of scorpions or other nocturnal creatures glowing in the dark under UV light.	after dinner	±45 min	275.00
4 x 4 //Garas Drive (unguided): This self-drive activity takes you on marked roads through Canyon Gondwana Park. A trail map is provided	In your own time	± 2-3hrs	park fee
Transfer Karios Airstrip (return)	On request	6km one way	180.00
Transfer Canyon Lodge to Hiker's Point (Hobas) (max 6 pax per vehicle, incl. luggage)	On request	25km one way	1370.00





CANYON VILLAGE

20 KM EAST OF THE FISH RIVER CANYON ON THE C 37 (FISH RIVER CANYON)

Suitable for a striking film set, Canyon Village lies at the foot of a sweeping rock face. Exhibiting authentic canyon characters, the sprawling lodge explores the story of the south in murals, traditional Nama dress, and even a donkey cart to convey baggage to rooms.

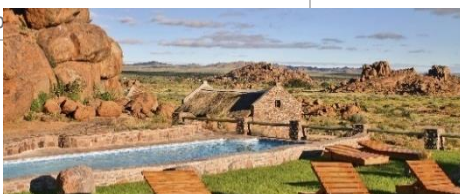
CANYON VILLAGE	RATE N\$ PP
All rates N\$ and include VAT & levies Rate validity 01.11.2024 - 31.10.2025	
Double/twin/triple/family room - sharing: bed & breakfast pp/night.	1995.00
Single room: bed & breakfast pp/night.	2495.00
Dinner pp	395.00
Lunch pp - alternatively à la carte at the lodge	217.00
Full 3 Course Lunch pp - alternatively à la carte at the lodge	325.00
Lunch pack pp	215.00

Please see the room configuration at the end of the rate sheet

ACTIVITIES AT CANYON VILLAGE:

ACTIVITIES ARE SUBJECT TO AVAILABILITY. PRICES MAY VARY. ALL RATES ARE N\$ PER PERSON.
ANY CHANGES IN NATIONAL PARK FEES WILL BE REFLECTED IN OUR RATES ACCORDINGLY.

DESCRIPTION	DEPARTURE	DURATION	RATE N\$ PP
Morning Walk (guided): This hike (about 6 km) takes you right into Gondwana Canyon Park. You are accompanied by a guide who will gladly share his knowledge about the fascinating desert landscape. This tour is not going to the Fish River Canyon.	± 07:30 AM	±2-3hr	270.00
Sunrise Hike (guided): We drive you to a spot with a grand view and watch the sunrise while enjoying coffee and tea. Then we walk back the short distance to the lodge. This tour is not going to the Fish River Canyon.	30min before sunrise	±3hrs	510.00
The trail from the Village to the Lodge or vice versa (unguided): A hiking trail takes you from Canyon Village up to a mountain plateau with a breathtaking view of the vast plains adjacent to the canyon. At 'Archway Rock' you start to make your way back into the plain and to the lodge.	In your own time	±2-3hrs	free of charge
Morning/Afternoon Canyon Drive (guided): Especially for all who want a break from the wheel or those on a fly-in safari. You are taken to the two major lookout points along the Fish River Canyon. Our guide will tell you all about the canyon's fascinating geology. Refreshments, a light snack, and park entrance fees are included.	consult reception for departure times	±3hrs	1445.00
Sundowner Drive in Gondwana Canyon Park (guided): This drive is the perfect opportunity for you to acquaint yourself with Gondwana Canyon Park. You will learn fascinating facts about geology and the adaptability of flora and fauna. This tour does not include the Fish River Canyon. Refreshments and a light snack are included.	2-3hrs before sunset	±2-3hrs	830.00
Sundowner Walk (escorted): Everyone is invited to wrap up the day with a short excursion to our very own 'local' mountain where we have a drink and watch the sun go down. Refreshments will be charged to the room.	30min before sunset	Return after sunset	free of charge
Night Walk (short, guided walk, only bookable directly at the Lodge) Prepare to be amazed by the sight of scorpions or other nocturnal creatures glowing in the dark under UV light.	after dinner	±45 min	275.00
4 x 4 //Garas Drive (unguided): This self-drive activity takes you on marked roads through Canyon Gondwana Park. A trail map is provided	In your own time	± 2-3hrs	park fee
Transfer Karios Airstrip (return)	On request	6km one way	180.00
Transfer Canyon Village to Hiker's Point (Hobas) (max 6 pax per vehicle, incl. luggage)	On request	25km one way	1370.00





CANYON ROADHOUSE INCL. CAMPING

20 KM EAST OF THE FISH RIVER CANYON ON THE C 37 (FISH RIVER CANYON)

Fill up with smiles at this innovative lodge that celebrates the good old days of the automobile. It offers peaceful slumber in 24 spacious rooms and boasts a pool, a campsite, a fuel station, an inviting terrace, and the most extraordinary restaurant in southern Namibia.

CANYON ROADHOUSE	RATE N\$ PP
All rates N\$ and include VAT & levies Rate validity 01.11.2024 - 31.10.2025	
Double/twin/triple/family room - sharing: bed & breakfast pp/night.	2284.00
Single room - bed & breakfast pp/night.	2857.00
Dinner pp - alternatively à la carte at the lodge	545.00
Lunch pp - alternatively à la carte at the lodge	217.00
Full 3 Course Lunch pp - alternatively à la carte at the lodge	325.00
Lunch pack pp	215.00
Canyon Road Campsite pp/night.	325.00

Please see the room configuration at the end of the rate sheet

ACTIVITIES AT CANYON ROADHOUSE

ACTIVITIES ARE SUBJECT TO AVAILABILITY. PRICES MAY VARY. ALL RATES ARE N\$ PER PERSON.
ANY CHANGES IN NATIONAL PARK FEES WILL BE REFLECTED IN OUR RATES ACCORDINGLY.

DESCRIPTION	DEPARTURE	DURATION	RATE N\$ PP
Hiking Trail (unguided): Stretch your legs and enjoy the beautiful surroundings by making use of our marked walking trail (no map provided).	Own time	2-3hrs	Free of charge
4 x 4 //Garas Drive (unguided): This self-drive activity takes you on marked roads through Canyon Gondwana Park. A trail map is provided	In your own time	± 2-3hrs	Park fees

GUESTS ARE WELCOME TO TAKE PART IN THE ACTIVITIES OFFERED AT CANYON LODGE OR CANYON VILLAGE.
GUESTS MUST ARRANGE THEIR OWN TRANSPORT TO CANYON LODGE OR CANYON VILLAGE.

DESCRIPTION	DEPARTURE	DURATION	RATE N\$ PP
Morning Walk (guided): This hike (about 6 km) takes you right into Gondwana Canyon Park. You are accompanied by a guide who will gladly share his knowledge about the fascinating desert landscape. This tour is not going to the Fish River Canyon.	± 07:30 AM. Starting point: Canyon Lodge	±2-3hr	270.00
Sunrise Hike (guided): We drive you to a spot with a grand view and watch the sunrise while enjoying coffee and tea. Then we walk back the short distance to the lodge. This tour is not going to the Fish River Canyon.	30 minutes before sunrise. Starting point: Canyon Lodge	±3hrs	510.00
Morning/Afternoon Canyon Drive (guided): Especially for guests who want a break from the wheel or those on a fly-in safari. You are taken to the two major lookout points along the Fish River Canyon . Our guide will tell you all about the canyon's fascinating geology. Refreshments, a light snack, and park entrance fees are included.	Consult reception for departure times. Starting point: Canyon Lodge.	±3hrs	1445.00
Sundowner Drive in Gondwana Canyon Park (guided): The three-hour drive is the perfect opportunity for you to acquaint yourself with Gondwana Canyon Park, its geology, flora, and fauna. This tour does not include the Fish River Canyon. Refreshments and a light snack are included.	2-3hrs before sunset, Starting point: Canyon Lodge / Village	±2-3hrs	830.00





KLEIN-AUS VISTA: DESERT HORSE INN INCL. CAMPING

3KM FROM AUS, HEADING TOWARDS LÜDERITZ (||KARAS)

Before descending to the vast Garub plains of the Namib where the Wild Horses roam free, you will find Klein-Aus Vista, nestled against the Aus mountains. These ancient Granite-Gneiss mountains embrace the farm-style Desert Horse Inn accommodation, your ideal and relaxing base en route to the coast to Lüderitz with its famous Kolmanskop ghost town or northwards to the magnificent red dunes of Sossusvlei.

DESERT HORSE INN	RATE N\$ PP
All RATE N\$ pps indicated in N\$ and include VAT & levies RATE N\$ pp validity 01.01.2025 - 31.12.2025	
Double/twin/triple/four bedroom - sharing: bed & breakfast pp/night. **	1830.00
Single room - bed & breakfast pp/night.	2250.00
Dinner pp	460.00
Full Lunch pp - alternatively à la carte at the lodge	195.00
Lunch pack pp	200.00
Desert Horse Campsite pp/night	210.00

** if 4 adults are sharing, the 4th adult will pay N\$ **/night

ACTIVITIES AT KLEIN-AUS VISTA:

RATE N\$ VALID FROM 01.01.2024 UNTIL 31.12.2025. ACTIVITIES ARE SUBJECT TO AVAILABILITY. PRICES MAY VARY.
ADVANCED BOOKING FOR HALF-DAY AND DAY TRIPS IS REQUIRED.

DESCRIPTION	DEPARTURE	DURATION	RATE N\$ PP
Scenic Sunset Drive (guided, min 3 persons per excursion): These late afternoon drives present an opportunity to experience the incredible scenic beauty of the Gondwana Sperrgebiet Rand Park at dusk.	afternoon	3 hours	575.00
Half-Day Desert Tour (guided to Kubub, GSR Park, morning and afternoon departure, min 4 persons per excursion): Discover the delights and impressive scenery of the Succulent Karoo Desert.	Morning / Afternoon	Half-day	990.00
Full-Day Desert Tour (guided to Kubub, GSR Park, God's Window, min 4 persons per excursion): Discover the delights and impressive scenery of the Succulent Karoo Desert.	Morning	Full day	1650.00
Hiking Trails (unguided, 2-5 hrs): If you want to explore the flora and fauna of the Succulent Karoo desert on your own you have five different hiking trails to choose from. They are well-marked and take you through the wildly romantic scenery of the Aus Mountains.	In your own time	2-5hrs	50.00
Mountain Biking (un-guided): There is a choice of different routes on well-marked trails, varying from 20km to 80km mostly single-track trails. Recommended for riders with intermediate skills. Rent dual-suspension bikes	In your own time	Own time	400.00-700.00
E-Biking (un-guided): There is a choice of different routes on well-marked trails, varying from 18km to 65km.	In your own time	Own time	1000.00
Stone Horse /UI HÄB: An attraction and activity not to miss. Do the short hike self-guided on the Vista trails to view the Stone horse /UI HÄB Land art, honoring the wild horses of the Namib	Morning / Afternoon	1-2hrs	50.00
Day trip to Lüderitz and Kolmanskop (unguided): Lüderitz is just 120km away and the Ghost Town of Kolmanskop is only 115km (tar road). Klein Aus Vista is the ideal starting point for a trip to both places. 20km from Aus, on the way to or back from Lüderitz, visit the Garub water hole where the wild horses and several other animals of the desert plains can be found. The Wild Horses of the Namib have roamed this harsh habitat since 1915 and are an experience one should not miss.			





KLEIN-AUS VISTA: GEISTERSCHLUCHT CABINS

3KM FROM AUS, HEADING TOWARDS LÜDERITZ

There is a touch of magic and intrigue at this rustic 'Ghost Canyon' cabin. Simplistic but exclusive as it hides in a secluded valley, where a rusty bullet-ridden Hudson greets you at the entrance road, a relic from a gunfight between diamond smugglers and police. Their ghosts are said to roam the valley in search of their lost diamonds. Further along the trail, a series of stone ramparts are visible from WWI days (1914-18), from when the German forces built fortifications here in the Aus hills to make a stand against the South African Union soldiers.

The Geisterschlucht Cabin consists of two family rooms sharing a bathroom, kitchen, and lounge area. Solar panels that charge batteries provide 220-volt light and outlets to charge devices but please note no hair dryer and electric kettle can be used. The two rooms each have two $\frac{3}{4}$ beds and one bunk bed each, sleeping a total of 4 persons per room with bedding provided. The bathroom has two organic toilets and two showers. The open plan kitchen and lounge area is equipped with a fridge/gas burner and an inside braai (barbecue) area with cutlery, crockery, pots, and pans provided. There is also an outside braai area to enjoy pleasant evenings around the fire.

GEISTERSCHLUCHT CABINS	RATE N\$ PP
All RATE N\$ pps indicated in N\$ and include VAT & levies RATE N\$ pp validity 01.01.2025 - 31.12.2025	
Geisterschlucht Cabins - self-catering: bed only, pp/night. *	535.00

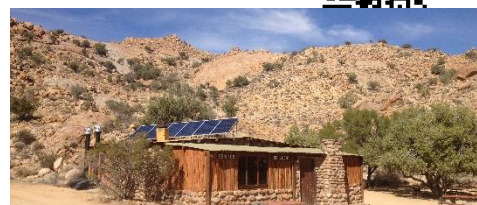
**Groups smaller than 3 pax, pay a minimum RATE N\$ pp of N\$ 1590.00

ACTIVITIES AT KLEIN-AUS VISTA:

RATE N\$ VALID FROM 01.01.2024 UNTIL 31.12.2025. ACTIVITIES ARE SUBJECT TO AVAILABILITY. PRICES MAY VARY.
ADVANCED BOOKING FOR HALF-DAY AND DAY TRIPS IS REQUIRED.

DESCRIPTION	DEPARTURE	DURATION	RATE N\$ PP
Scenic Sunset Drive (guided, min 3 persons per excursion): These late afternoon drives present an opportunity to experience the incredible scenic beauty of the Gondwana Sperrgebiet Rand Park at dusk.	afternoon	3 hours	575.00
Half-Day Desert Tour (guided to Kubub, GSR Park, morning and afternoon departure, min 4 persons per excursion): Discover the delights and impressive scenery of the Succulent Karoo Desert.	Morning / Afternoon	Half-day	990.00
Full-Day Desert Tour (guided to Kubub, GSR Park, God's Window, min 4 persons per excursion): Discover the delights and impressive scenery of the Succulent Karoo Desert.	Morning	Full day	1650.00
Hiking Trails (unguided, 2-5 hrs): If you want to explore the flora and fauna of the Succulent Karoo desert on your own you have five different hiking trails to choose from. They are well-marked and take you through the wildly romantic scenery of the Aus Mountains.	In your own time	2-5hrs	50.00
Mountain Biking (un-guided): There is a choice of different routes on well-marked trails, varying from 20km to 80km mostly single-track trails. Recommended for riders with intermediate skills. Rent dual-suspension bikes	In your own time	Own time	400.00-700.00
E-Biking (un-guided): There is a choice of different routes on well-marked trails, varying from 18km to 65km.	In your own time	Own time	1000.00
Stone Horse /UI HÄB: An attraction and activity not to miss. Do the short hike self-guided on the Vista trails to view the Stone horse /UI HÄB Land art, honoring the wild horses of the Namib	Morning / Afternoon	1-2hrs	50.00

NB: PLEASE NOTE RATE N\$ PP VALIDITY. FOR RESERVATIONS, ACTIVITIES, AND ANY OTHER INFORMATION, PLEASE CONTACT: RESERVATIONS@KLEIN-AUS-VISTA.COM TEL: +264 63 258 116





KLEIN-AUS VISTA: EAGLE'S NEST

3KM FROM AUS, HEADING TOWARDS LÜDERITZ

Forever landscapes, solitude, silence, and sunsets. Klein-Aus Vista's Eagle's Nest is a self-catering getaway with 8 individually built rock chalets. After check-in at Desert Horse Inn reception, it is a 7 km drive to Eagle's Nest. Keep to yourself or drive to Desert Horse Inn's restaurant for delicious fare and friendly company. Return to dream of peace and wake to magnificent sunrise scenery.

EAGLE'S NEST	RATE N\$ PP
All RATE N\$ pps indicated in N\$ and include VAT & levies RATE N\$ pp validity 01.01.2025 - 31.12.2025	
Double/twin/triple/four bedroom - sharing: bed & breakfast pp/night. **	2450.00
Single room - bed & breakfast pp/night.	3030.00
Dinner pp	460.00
Lunch pp - alternatively à la carte at the lodge	195.00
Lunch pack pp	200.00

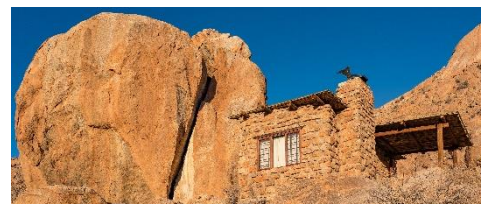
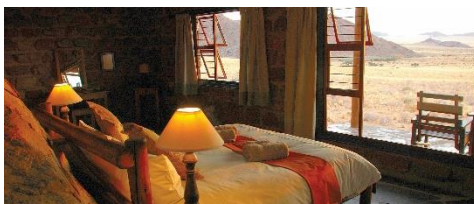
** if 4 adults are sharing, the 4th adult will pay a reduced RATE N\$ ** pp, please enquire.

ACTIVITIES AT KLEIN-AUS VISTA:

RATE N\$ VALID FROM 01.01.2024 UNTIL 31.12.2025. ACTIVITIES ARE SUBJECT TO AVAILABILITY. PRICES MAY VARY.
ADVANCED BOOKING FOR HALF-DAY AND DAY TRIPS IS REQUIRED.

DESCRIPTION	DEPARTURE	DURATION	RATE N\$ PP
Scenic Sunset Drive (guided, min 3 persons per excursion): These late afternoon drives present an opportunity to experience the incredible scenic beauty of the Gondwana Sperrgebiet Rand Park at dusk.	afternoon	3 hours	575.00
Half-Day Desert Tour (guided to Kubub, GSR Park, morning and afternoon departure, min 4 persons per excursion): Discover the delights and impressive scenery of the Succulent Karoo Desert.	Morning / Afternoon	Half-day	990.00
Full-Day Desert Tour (guided to Kubub, GSR Park, God's Window, min 4 persons per excursion): Discover the delights and impressive scenery of the Succulent Karoo Desert.	Morning	Full day	1650.00
Hiking Trails (unguided, 2-5 hrs): If you want to explore the flora and fauna of the Succulent Karoo desert on your own you have five different hiking trails to choose from. They are well-marked and take you through the wildly romantic scenery of the Aus Mountains.	In your own time	2-5hrs	50.00
Mountain Biking (un-guided): There is a choice of different routes on well-marked trails, varying from 20km to 80km mostly single-track trails. Recommended for riders with intermediate skills. Rent dual-suspension bikes	In your own time	Own time	400.00-700.00
E-Biking (un-guided): There is a choice of different routes on well-marked trails, varying from 18km to 65km.	In your own time	Own time	1000.00
Stone Horse /UI HÄB: An attraction and activity not to miss. Do the short hike self-guided on the Vista trails to view the Stone horse /UI HÄB Land art, honoring the wild horses of the Namib	Morning / Afternoon	1-2hrs	50.00

NB: PLEASE NOTE RATE N\$ PP VALIDITY. FOR RESERVATIONS, ACTIVITIES, AND ANY OTHER INFORMATION, PLEASE CONTACT: RESERVATIONS@KLEIN-AUS-VISTA.COM TEL: +264 63 258 116





NAMIB DESERT LODGE INCL. CAMPING

60 KM NORTH OF SESRIEM ON THE C 19 (SOSSUSVLEI AREA)

Set below striking fossilized dunes, the comfortable lodge provides a spectacular experience of an ancient desert. 65 rooms, two swimming pools, and a waterhole are surrounded by sandy splendor. Breathe in the grandeur on a sunset drive and feel the earth underfoot. Relax in the arms of the Namib.

NAMIB DESERT LODGE All rates N\$ and include VAT & levies Rate validity 01.11.2024 - 31.10.2025	RATE N\$ PP
Double/twin/triple/family room - sharing: bed & breakfast pp/night.	2284.00
Single room - bed & breakfast pp/night.	2857.00
Dinner pp - buffet	395.00
Dune Dinner pp - min 10 Pax	1320.00
Dune Dinner (BBQ) in combination with Sundowner Drive including refreshments and transfer to lodge, pp - min 10 pax	1870.00
Lunch pp - alternatively à la carte at the lodge	217.00
Full 3 Course Lunch pp - alternatively à la carte at the lodge	325.00
Lunch pack pp	215.00
Namib Desert Campsite pp/night	325.00

Please see the room configuration at the end of the rate sheet

ACTIVITIES IN GONDWANA NAMIB PARK:

ACTIVITIES ARE SUBJECT TO AVAILABILITY. PRICES MAY VARY. ALL RATES ARE N\$ PER PERSON.

DESCRIPTION	DEPARTURE	DURATION	RATE N\$ PP
Sundowner Dune Drive (guided, min. 4 persons): Discover the fossilized dunes, the red dunes above the plateau, and the many other wonders of the Namib Desert on this drive around Gondwana Namib Park. Refreshments and a light snack are included.	±2hrs before sunset	±2-3hrs	865.00
Morning Dune Drive (guided, min. 4 persons): Discover the fossilized dunes, the red dunes above the plateau, and the many other wonders of the Namib Desert on this drive around Gondwana Namib Park. Refreshments (tea/coffee) and a light snack (rusks) are included.	±30min before sunrise	±2-3hrs	865.00
Sossusvlei Excursion (guided): Guided half-day excursion to Sossusvlei, incl. entrance fees to the National Park, brunch, and refreshments. Pre-booking essential.	1hr before sunrise	±5-6hrs	2745.00
Hiking Trails (un-guided): Explore the Namib Desert on foot on your initiative. A trail map is available at the reception.	In your own time, return before nightfall		free of charge
Desert Night Walk (short, guided walk, only bookable directly at the Lodge) Prepare to be amazed by the sight of scorpions or other nocturnal creatures glowing in the dark under UV light.	after dinner	±45 min	275.00
Transfer to Namib Naukluft Lodge Airstrip (return) max 6 pax per vehicle	On request		1215.00 per vehicle
Transfer to Solitaire Lodge Airstrip (return) max 6 pax per vehicle	On request		1525.00 per vehicle
Transfer to Sossusvlei Lodge Airstrip (return) max 6 pax per vehicle	On request		2435.00 per vehicle





NAMIB DESERT CAMPING2GO

AT NAMIB DESERT LODGE, 60 KM NORTH OF SESRIEM ON THE C 19 (SOSSUSVLEI AREA)

An effortless outdoor experience awaits those who venture into our newest product offering. Camping2Go takes the amazing outdoor serenity of camping and pairs it with a hassle-free self-catering product.

NAMIB DESERT Camping2Go All rates N\$ and include VAT & levies Rate validity 01.11.2024 - 31.10.2025	RATE N\$ PP
Camping2Go - Self-catering tents with en-suite bathrooms - sharing: bed only, pp/night.	985.00
Camping2Go - Self-catering tents with en-suite bathrooms - single: bed only, pp/night.	1969.00
Dinner pp - buffet at Namib Desert Lodge	395.00
Breakfast pp - buffet at Namib Desert Lodge	270.00
Lunch pp - alternatively à la carte at Namib Desert Lodge	217.00

ACTIVITIES IN GONDWANA NAMIB PARK:

ACTIVITIES ARE SUBJECT TO AVAILABILITY. PRICES MAY VARY. ALL RATES ARE N\$ PER PERSON.

DESCRIPTION	DEPARTURE	DURATION	RATE N\$ PP
Sundowner Dune Drive (guided, min. 4 persons): Discover the fossilized dunes, the red dunes above the plateau, and the many other wonders of the Namib Desert on this drive around Gondwana Namib Park. Refreshments and a light snack are included.	±2hrs before sunset	±2-3hrs	865.00
Morning Dune Drive (guided, min. 4 persons): Discover the fossilized dunes, the red dunes above the plateau, and the many other wonders of the Namib Desert on this drive around Gondwana Namib Park. Refreshments (tea/coffee) and a light snack (rusks) are included.	±30min before sunrise	±2-3hrs	865.00
Sossusvlei Excursion (guided): Guided half-day excursion to Sossusvlei, incl. entrance fees to the National Park, brunch, and refreshments. Pre-booking essential.	1hr before sunrise	±5-6hrs	2745.00
Hiking Trails (un-guided): Explore the Namib Desert on foot on your initiative. A trail map is available at the reception.	In your own time, return before nightfall		free of charge
Desert Night Walk (short, guided walk, only bookable directly at the Lodge) Prepare to be amazed by the sight of scorpions or other nocturnal creatures glowing in the dark under UV light.	after dinner	±45 min	275.00
Transfer to Namib Naukluft Lodge Airstrip (return) max 6 pax per vehicle	On request		1215.00 per vehicle
Transfer to Solitaire Lodge Airstrip (return) max 6 pax per vehicle	On request		1525.00 per vehicle
Transfer to Sossusvlei Lodge Airstrip (return) max 6 pax per vehicle	On request		2435.00 per vehicle





NAMIB DUNE STAR CAMP

60 KM NORTH OF SESRIEM ON THE C 19 (SOSSUSVLEI AREA)

Escape from the world. A transfer leads you into a vast desert wilderness to 9 wooden cabins. After checking in an optional guided hike is offered to explore the area. As soon as the dunes have transformed to gold and the distant mountains glow purple, it is time to wheel beds onto balconies. Enjoy a night under the glittering sky of the Namib. (Only kids of 12 years+ allowed) Please note that a detailed itinerary will be provided with booking confirmation.

NAMIB DUNE STAR CAMP All rates N\$ and include VAT & levies Rate validity 01.11.2024 - 31.10.2025	RATE N\$ PP
Double/triple room - sharing; bed & breakfast pp/night.	3405.00
Single room - bed & breakfast pp/night.	4259.00
Dinner pp	545.00

Please see the room configuration at the end of the rate sheet

NAMIB DUNE STAR CAMP – ITINERARY

DAY 1

CHECK-IN AT NAMIB DESERT LODGE:

(KINDLY NOTE THAT GUESTS ARRIVING LATE FOR THE SHUTTLE DEPARTING TO DUNE STAR CAMP WILL BE CHARGED A SURCHARGE OF N\$116 PER PERSON.)

JUNE - AUGUST

SEPTEMBER - NOVEMBER

DECEMBER - FEBRUARY

MARCH-MAY

ARRIVAL LATEST AT 15:45 TO DEPART FOR NAMIB DUNE STAR CAMP AT 16:00

ARRIVAL LATEST AT 16:45 TO DEPART FOR NAMIB DUNE STAR CAMP AT 17:00

ARRIVAL LATEST AT 17:15 TO DEPART FOR NAMIB DUNE STAR CAMP AT 17:30

ARRIVAL LATEST AT 16:45 TO DEPART FOR NAMIB DUNE STAR CAMP AT 17:00

YOU WILL BE TRANSFERRED TO NAMIB DUNE STAR CAMP WITH YOUR OVERNIGHT LUGGAGE IN A 4X4 VEHICLE. ANY REMAINING LUGGAGE CAN BE STORED AT NAMIB DESERT LODGE. YOU ARE WELCOME TO TAKE PART IN A DUNE WALK OF APPROXIMATELY 1 HOUR AT NAMIB DUNE STAR CAMP.

DAY 2

EARLY START WITH COFFEE OR TEA AT THE BUNGALOW, FOLLOWED BY A GUIDED SUNRISE WALK (APPROXIMATELY 1 HOUR) IN THE SURROUNDING DUNES OF THE NAMIB DUNE STAR CAMP. AFTER THE WALK, YOU WILL HAVE TIME TO FRESHEN UP AND ENJOY A HEARTY BREAKFAST AT NAMIB DUNE STAR CAMP.

KINDLY NOTE THAT THE SHUTTLE TO NAMIB DESERT LODGE ONLY DEPARTS FROM NAMIB DUNE STAR CAMP BETWEEN 8:30 AND 9:00 A.M. (UNFORTUNATELY NO EARLIER SHUTTLE IS AVAILABLE). PLEASE PLAN YOUR FURTHER JOURNEY ON THIS DAY OR EXCURSIONS TO SOSSUSVLEI ACCORDINGLY.

KEEP IN MIND:

TO MAKE THE EXCURSION WORTHWHILE AND ENJOYABLE, WE RECOMMEND A ONE-NIGHT STAY AT NAMIB DESERT LODGE, FOLLOWED BY A NIGHT AT NAMIB DUNE STAR CAMP.

WHEN STAYING AT NAMIB DESERT LODGE, PLEASE NOTE THAT CHECK-OUT TIME IS 10:00 A.M. NO DAYROOMS ARE AVAILABLE AT NAMIB DESERT LODGE.

AT NAMIB DUNE STAR CAMP HOT WATER AND ELECTRICITY ARE LIMITED AND NO FAN, AIR CONDITIONING OR PLUG POINTS (POWER SOCKETS) ARE AVAILABLE. FOR THE NATURE WALK, REMEMBER TO WEAR COMFORTABLE SHOES AND A HAT. GUIDES ARE ENGLISH-SPEAKING. YOUR RATE N\$ PP FOR THE NAMIB DUNE STAR CAMP IS BED AND BREAKFAST BASED, THEREFORE DINNERS, DRINKS, AND ANY EXTRAS INCURRED DURING YOUR STAY MUST BE PAID AT THE RECEPTION OF NAMIB DESERT LODGE ON DEPARTURE. GONDWANA IS KNOWN FOR HAVING CHILD-FRIENDLY LODGES. WE REGRET THAT THE NAMIB DUNE STAR CAMP IS NOT SUITABLE FOR CHILDREN AGED 12 YEARS OR YOUNGER.





THE DESERT GRACE

60 KM NORTH OF SESRIEM ON THE C 19 (SOSSUSVLEI AREA)

Treat yourself to desert elegance and an extra touch of grace! Graceful spaces and gracious hospitality imbue this modern lodge with its elegance of yesteryear, spirited character, and refreshingly stylish interior.

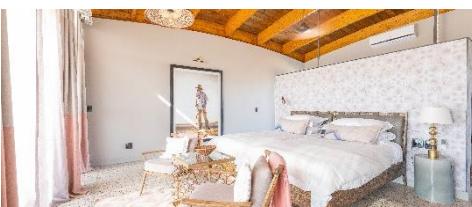
THE DESERT GRACE	RATE N\$ PP
All rates N\$ and include VAT & levies Rate validity 01.11.2024 - 31.10.2025	
Double/twin/triple/family room - sharing: bed & breakfast pp/night.	4901.00
Single room - bed & breakfast pp/night.	6126.00
Dinner pp	545.00
Dune Dinner pp - min 10 Pax	1320.00
Dune Dinner (BBQ) in combination with Sundowner Drive including refreshments and transfer to lodge, pp - min 10 pax	1870.00
Lunch pp - alternatively à la carte at the lodge	217.00
Full 3 Course Lunch pp - alternatively à la carte at the lodge	325.00
Lunch pack pp	215.00

Please see the room configuration at the end of the rate sheet

ACTIVITIES AT THE DESERT GRACE:

ACTIVITIES ARE SUBJECT TO AVAILABILITY. PRICES MAY VARY. ALL RATES ARE N\$ PER PERSON.
ANY CHANGES IN NATIONAL PARK FEES WILL BE REFLECTED IN OUR RATES ACCORDINGLY.

DESCRIPTION	DEPARTURE	DURATION	RATE N\$ PP
Morning Dune Drive or Sundowner Dune Drive (guided): Discover the dunes and the many other wonders of the Namib Desert on this drive around Gondwana Namib Park. Refreshments and a light snack are included.	Sunrise / 2hrs before sunset	±2-3hrs	865.00
Sossusvlei Excursion (guided): Guided half-day excursion to Sossusvlei, incl. entrance fees to the National Park, brunch, and refreshments. Pre-booking essential.	1hr before sunrise	±5-6hrs	2745.00
Walking Trails (unguided): Get a closer look at the Namib in your own time by making use of our 3km, 5km, or 7km walking trails. Please enquire at reception.	In your own time, return before sunset	Own time	free of charge
Desert Night Walk (short, guided walk, only bookable directly at the Lodge) Prepare to be amazed by the sight of scorpions or other nocturnal creatures glowing in the dark under UV light.	after dinner	±45 min	275.00
Transfer to Namib Naukluft Lodge Airstrip (return) max 6 pax per vehicle	On request		1215.00 per vehicle
Transfer to Solitaire Lodge Airstrip (return) max 6 pax per vehicle	On request		1525.00 per vehicle
Transfer to Sossusvlei Lodge Airstrip (return) max 6 pax per vehicle	On request		2435.00 per vehicle





DESERT WHISPER

60 KM NORTH OF SESRIEM ON THE C 19 (SOSSUSVLEI AREA)

The desert is calling, whispering sweet nothings in your ear, attracting lovers of life to celebrate the desert in a one-of-its-kind intimate desert hideaway. Creatively constructed with sublime desert views, Desert Whisper is designed as a luxuriously special desert retreat for two. Inspired by nature and natural shapes, materials, and colors, your contemporary desert home is one that you may never want to leave. There is the invigorating feeling of space in the desert. The golden expanse of the Namib extends to the horizon, fringed by the softness of the Naukluft Mountains in the distance and the infinite blue sky above. And it is entirely yours for your stay.

Embrace the solitude and magnificence of the Namib Desert at Desert Whisper, your exclusive desert hideaway amid the Namib sands.

- The Desert Whisper is part of the Gondwana Secret Collection, based in the Namib Desert.
- There is only one whisper. A spacious single-story suite, including an open plan kitchen, dining, and lounge area; an en suite room with balcony and an outdoor area fully equipped with barbeque facilities, as well as a private plunge pool.
- Guests arrive at the Namib Desert Collection, where the dedicated host will receive guests and ensure their stay is to their liking. From there, follow the en-route signage to the Desert Whisper's Private Reception.
- Check-in is at 14:00 and Check-out time is 10:00 local time.
- Desert Whisper is a 2-guest exclusive lodge. Children under 14 years old are not permitted, but children 14 years and older are welcome if the total number of guests is 2.
- It is fully inclusive of all meals & drinks, with exclusive activities on offer within the Gondwana Namib Park (Dune Drives, and hiking activities). Pre-booking for a Sossusvlei Excursion is essential and is enjoyed on a sharing basis.
- There is an equipped kitchen and a fully stocked bar, as well as barbeque facilities in a terraced outdoor space. Meals are pre-prepared according to the preferences of the guests.
- To guarantee complete exclusivity and intimacy, there is no service staff or chef based at the Desert Whisper, during the stay of the guests, however, guests always have radio contact with their host.
- A private chef can be arranged upon request to prepare and serve dinner.
- Free WIFI is available and USB ports for charging equipment are provided.
- The Desert Whisper is equipped with air conditioning.

THE DESERT WHISPER	RATE N\$
All rates N\$ and include VAT & levies Rate validity 01.11.2024 - 31.10.2025	
Per room/night, fully inclusive, max 2 pax/room	27 500.00

TRANSFERS	DEPARTURE	RATE N\$ PER VEHICLE
Transfer to Namib Naukluft Lodge Airstrip – return, min 2 pax	On request	1215.00
Transfer to Solitaire Lodge Airstrip – return, min 2 pax	On request	1525.00
Transfer to Sossusvlei Lodge Airstrip – return, min 2 pax	On request	2435.00

TRANSFERS ARE SUBJECT TO AVAILABILITY AND NEED TO BE PRE-BOOKED. PRICES MAY VARY.





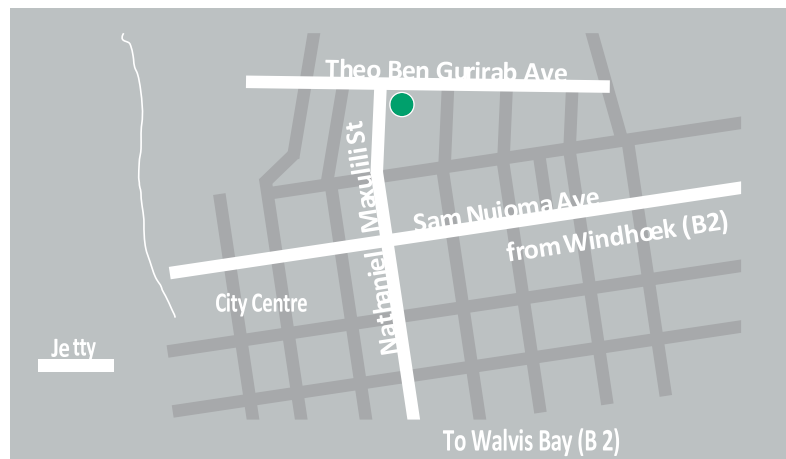
THE DELIGHT SWAKOPMUND

CORNER OF THEO-BEN GURIRAB AVENUE / NATHANIEL MAXUILILI STREET (SWAKOPMUND)

Amongst the town's captivating contrasts and old traditions, Gondwana's Delight is a fresh breeze in the desert. A refreshing, relaxing, modern, light, and airy establishment to uplift and inspire. Effortless and comfortable, with the distinctively warm and welcoming Gondwana service and charm, your stay is always a memorable experience.

THE DELIGHT SWAKOPMUND All rates N\$ and include VAT & levies Rate validity 01.11.2024 - 31.10.2025	RATE N\$ PP
Double/twin/family room - sharing: bed & breakfast pp/night.	1892.00
Single room - bed & breakfast pp/night.	2365.00
Breakfast pp buffet	308.00
Lunch pack pp	215.00

Please see the room configuration at the end of the rate sheet



THE DELIGHT HAS A DEDICATED HOST WHO ASSISTS GUESTS WITH ANYTHING FROM ACTIVITY BOOKINGS TO DINNER RESERVATIONS. AND OFFER CONFERENCING FACILITIES.





THE PEARLS

BEACH PODS
16 MOLENWEG (SWAKOPMUND)

Located on the iconic beachfront along Molenweg Swakopmund, near popular eateries, local sights, and a range of activities – these exclusive pods offer affluent guests the opportunity to explore the vibrant town of Swakopmund, while still having access to comfort, privacy, and seclusion. The Pearls offer a comprehensive, inclusive experience with access to a private concierge, to arrange for reservations and activity bookings (at an additional expense) or the option to stay at home and enjoy the view, beachfront access, private entertainment area with a hot tub or simply relax while enjoying a bit of sunbathing.

- The Pearls Beach Pods are part of the Gondwana Secret Collection, based in Swakopmund.
- There are two pods, The Jetty, and The Mole.
- The Jetty accommodates up to 6 guests (3 bedrooms) and The Mole for up to 4 guests (2 bedrooms).
- Check-in is at 14:00 and Check-out time is 10:00 local time.
- Children up to 5 years old are free of charge; children 6+ years old are considered a person occupancy.
- It is fully inclusive of all food and beverages that the pod is pre-stocked with.
- Meals are pre-prepared according to the preferences of the guests. With a fully equipped kitchen and well-provisioned bar guests are at leisure to cater to themselves.
- To guarantee complete exclusivity and intimacy of the guests, there is no service staff or chef based at the Pearls Beach Pods during the stay of the guests, however, guests always have access to contact with their host.
- A dedicated host is available to guests of The Pearls Beach Pods, to support guests with booking activities, reserving dinners, and customizing services.
- A private chef can be arranged upon request, well in advance, to prepare and serve meals at an additional cost.
- Free WIFI is available and USB ports for charging equipment are provided.
- The Pearls are equipped with air conditioning.

THE PEARLS BEACH PODS – THE JETTY All rates N\$ and include VAT & levies Rate validity 01.11.2024 - 31.10.2025	RATE N\$
Per room/night, inclusive of food and beverage, max 2 pax/room	27 500.00
Supplement for additional room/night (2 rooms booked) inclusive of food and beverage, max 2 pax/room	16 500.00
Supplement for additional room/night (3 rooms booked) inclusive of food and beverage, max 2 pax/room	11 000.00

*No single supplement for The Pearls Beach Pods and can accommodate max 2 pax/room

THE PEARLS BEACH PODS – THE MOLE All rates N\$ and include VAT & levies Rate validity 01.11.2024 - 31.10.2025	RATE N\$
Per room/night, inclusive of food and beverage, max 2 pax/room	27 500.00
Supplement for additional room/night (2 rooms booked) inclusive of food and beverage, max 2 pax/room	16 500.00

*No single supplement for The Pearls Beach Pods and can accommodate max 2 pax/room

FOR BOOKINGS, PLEASE CONTACT
thepearls@gcnam.com





DAMARA MOPANE LODGE

20 KM EAST OF KHORIXAS ON THE C 39 (DAMARALAND)

This innovative lodge has 60 chalets, each with its vegetable garden. Savour the charm from your stoep where sunflowers peep over walls, refresh in the pool, visit the Twyfelfontein rock engravings 100km away, and watch the sun sink into mopane woodland.

DAMARA MOPANE LODGE All rates N\$ and include VAT & levies Rate validity 01.11.2024 - 31.10.2025	RATE N\$ PP
Double/twin room - sharing: bed & breakfast pp/night.	2284.00
Single room: bed & breakfast pp/night	2857.00
Dinner pp - buffet	395.00
Lunch pp - pre-booked, alternatively à la carte at the lodge	217.00
Full 3 Course Lunch pp - alternatively à la carte at the lodge	325.00
Lunch pack pp	215.00

Please see the room configuration at the end of the rate sheet

ACTIVITIES AT DAMARA MOPANE LODGE:

DESCRIPTION	DEPARTURE	DURATION	RATE N\$ PP
Birding Morning or Afternoon walk (guided): Join our guide for an exciting tour through the gardens to spot the local birdlife	30 min after sunrise and 1.5 hours before sunset	approx. 1 - 1.5 hrs	240.00
Sundowner Walk (escorted): A highlight at the end of the day is to ascend the hill to a viewing platform for a sweeping vista of the mopane woodland illuminated by the setting sun. Beverages are provided and charged to the room.	45min before sunset	Own time	free of charge (only drinks will be charged)
Hiking Trails (unguided): Explore the surrounding hills on foot and your initiative (Mountain Trail). Or choose the Valley Trail as an easier option. The trails are marked.	in your own time	Own time	free of charge





PALMWAG LODGE & CAMP INCL. CAMPING

A FEW KILOMETRES NORTH OF THE C43/C39 JUNCTION (DAMARALAND)

Between Kaokoland and the Skeleton Coast, where the flat-topped Etendeka mountains and the carpet of rich red rock greet the tributaries of the Uniab River, lies Palmwag Lodge. Amid swaying Makalani palms and robust mopane trees nourished by underground water, the lodge overlooks the sweeping northern Damaraland landscape peppered with green Euphorbias.

PALMWAG LODGE All rates N\$ and include VAT & levies Rate validity 01.11.2024 - 31.10.2025	RACK RATE N\$ PP
Standard room double/twin - sharing: bed & breakfast pp/night.	2552.00
Standard room - single: bed & breakfast pp/night.	3189.00
Comfort room double/twin/triple/family - sharing: bed & breakfast pp/night.	3135.00
Comfort room - single: bed & breakfast pp/night	3917.00
Dinner pp	395.00
Lunch pp	217.00
Full 3 Course Lunch pp	325.00
Lunch pack pp	215.00
Palmwag Campsite pp/night	325.00

Please see the room configuration at the end of the rate sheet

ACTIVITIES AT PALMWAG LODGE:

ACTIVITIES ARE SUBJECT TO AVAILABILITY. PRICES MAY VARY. ALL RATES ARE N\$ PER PERSON.

DESCRIPTION	DEPARTURE	DURATION	RATE N\$ PP
Morning/Afternoon Half-Day Scenic Drive (guided): Explore the amazing Palmwag concession. Refreshments and light snacks are included.	± 07:00 AM / ±3hrs before sunset	±3 hrs	1230.00
Full-Day Damaraland Excursion (min 4 pax): This Full-Day scenic drive in the Palmwag Concession is the best way to experience beautiful Damaraland	± 07:00 AM	Full Day	3230.00
Morning Hike 2km (guided): Discover the smaller wildlife that roams the area. Your guide will show you the different tracks and talk about the animals that live in the concession.	± 07:00 AM	±1.5 hrs	380.00
Morning Hike 5km (guided): Discover the smaller wildlife that roams the area. Your guide will show you the different tracks and talk about the animals that live in the concession.	± 07:00 AM	±3 hrs	460.00
Half-Day Rhino Tracking (guided, min 2 pax): Guests are taken into the concession with our open-game drive vehicles. Once closer to the rhinos, tracking continues on foot. This activity is not suitable for children under 12 years.	± 06:00 AM / 06:30 AM	Half-day	3615.00
Welwitschia Walk (unguided): Discover the local flora in your own time	In your own time	±1.5 hrs	free of charge
Transfer to Palmwag Airstrip (return) max 6 pax per vehicle	On request		free of charge





PALMWAG CAMPING2GO

AT PALMWAG LODGE, A FEW KILOMETERS NORTH OF THE C43/C39 JUNCTION (DAMARALAND)

Just a stone's throw from the iconic Palmwag Lodge, the new Palmwag Camping2Go looks out onto the beautiful Damaraland landscapes, with the red earth stretching in the far horizons. Enjoy one of the two pools available at the lodge or the peaceful Pool Bar, during your stay.

PALMWAG Camping2Go All rates N\$ and include VAT & levies Rate validity 01.11.2024 - 31.10.2025	RACK RATE N\$ PP
Camping2Go - Self-catering tents with en-suite bathrooms - sharing: bed only, pp/night.	985.00
Camping2Go - Self-catering tents with en-suite bathrooms - single: bed only, pp/night.	1969.00
Dinner pp - buffet at Palmwag Lodge	395.00
Breakfast pp - buffet at Palmwag Lodge	270.00
Lunch pp - alternatively à la carte at Palmwag Lodge	215.00

ACTIVITIES AT PALMWAG LODGE:

ACTIVITIES ARE SUBJECT TO AVAILABILITY. PRICES MAY VARY. ALL RATES ARE N\$ PER PERSON.

DESCRIPTION	DEPARTURE	DURATION	RATE N\$ PP
Morning/Afternoon Half-Day Scenic Drive (guided): Explore the amazing Palmwag concession. Refreshments and light snacks are included.	± 07:00 AM / ±3hrs before sunset	±3 hrs	1230.00
Full-Day Damaraland Excursion (min 4 pax): This Full-Day scenic drive in the Palmwag Concession is the best way to experience beautiful Damaraland	± 07:00 AM	Full Day	3230.00
Morning Hike 2km (guided): Discover the smaller wildlife that roams the area. Your guide will show you the different tracks and talk about the animals that live in the concession.	± 07:00 AM	±1.5 hrs	380.00
Morning Hike 5km (guided): Discover the smaller wildlife that roams the area. Your guide will show you the different tracks and talk about the animals that live in the concession.	± 07:00 AM	±3 hrs	460.00
Half-Day Rhino Tracking (guided, min 2 pax): Guests are taken into the concession with our open-game drive vehicles. Once closer to the rhinos, tracking continues on foot. This activity is not suitable for children under 12 years.	± 06:00 AM / 06:30 AM	Half-day	3615.00
Welwitschia Walk (unguided): Discover the local flora in your own time	In your own time	±1.5 hrs	free of charge
Transfer to Palmwag Airstrip (return) max 6 pax per vehicle	On request		free of charge





PALMWAG LODGE UNDER CANVAS SLEEP-OUT

AT PALMWAG LODGE, A FEW KILOMETERS NORTH OF THE C43/C39 JUNCTION (DAMARALAND)

The Under-Canvas Sleep-out is a truly Namibian adventure that lets you experience the raw nature of the Palmwag Concession. Your experienced guide will show you all that the Palmwag Concession has to offer. On the drive through the vast Damaraland landscapes, with a little luck, you can see the free-roaming wildlife. This area also supports one of the largest free-roaming black rhino and desert-adapted elephant populations. The tour will take you far away off the beaten tourist tracks, giving you a feeling of peace and tranquillity. The experience you get from sitting around the fire at night in this vast landscape and the sounds of nature that travel through the crisp night air is unbeatable.

The Under-Canvas Sleep-out activity must be pre-booked before your arrival.

PALMWAG LODGE UNDER CANVAS SLEEP-OUT All rates N\$ and include VAT & levies Rate validity 01.11.2024 - 31.10.2025	RATE N\$ PP
Sharing/Single tent pp - meals, beverages, and activities as per itinerary below.	3 735.00

ITINERARY (MIN 2 PERSONS/MAX 8 PERSONS)

- YOUR GUIDE WILL MEET YOU AT 15H30 AT THE MAIN RECEPTION AT PALMWAG LODGE WHERE YOU WILL DEPART ON AN AFTERNOON GAME DRIVE AND A SUNDOWNER STOP BEFORE YOU HEAD TO YOUR CAMP THAT HAS BEEN SET UP FOR YOU.
- BASIC SANITARY FACILITIES ARE AVAILABLE.
- AFTER YOU HAVE SETTLED IN, YOUR GUIDE WILL PREPARE A TRUE NAMIBIAN BRAAI (BARBEQUE) UNDER THE NAMIBIAN STARS.
- THE FOLLOWING MORNING YOUR GUIDE WILL TAKE YOU ON A SHORT WALK FROM THE CAMP.
- ON YOUR RETURN, YOUR GUIDE WILL SET UP BREAKFAST AFTER WHICH YOU WILL DEPART ON A MORNING DRIVE THAT TAKES YOU BACK TO THE LODGE.
- RETURN TO THE LODGE AT 11H00
- ALTERNATIVELY, YOU MAY STAY 2-3 NIGHTS ON A SLEEP-OUT AND ENJOY 1-2 FULL DAYS EXPLORING THE CONCESSION.

INCLUSIVE

ALL MEALS AND BEVERAGES DURING THE SLEEP-OUT, GUIDE, VEHICLE, CAMPING EQUIPMENT, GAME DRIVE, AND WALK ARE INCLUDED.

CHILD POLICY

THIS ACTIVITY IS ONLY FOR PEOPLE WHO ARE 12 YEARS OLD OR OLDER.





OMARUNGA EPUPA-FALLS CAMP INCL. CAMPING

EPUPA FALLS (KAOKOLAND)

One of the highlights of Kaokoland in the far northern reaches of Namibia, Epupa is a magical belt of Makalani palm forest on the perennial Kunene River.

There is something special about this Kaokoland refuge 180km north of Opuwo, where the Kunene River plunges into the gorge below. Baobab trees cling to the rocky slopes as torrents of water rumble and tumble down the rocks with a flash of a rainbow and an invigorating burst of wonder. Two hundred meters upstream from the cascading falls, Omarunga Epupa-Falls Camp is a cozy thatched lodge on the riverbank set under the palms and the perfect place from which to experience Epupa enchantment.

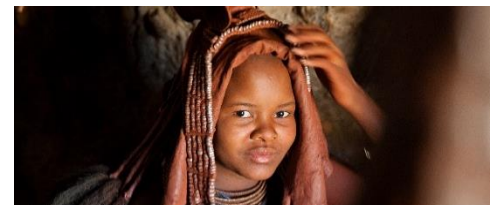
OMARUNGA EPUPA-FALLS CAMP All rates N\$ and include VAT & levies Rate validity 01.11.2024 - 31.10.2025	RACK RATE N\$ PP
Double/twin/triple/family room - sharing: bed & breakfast pp/night.	2525.00
Single room: bed & breakfast pp/night	3155.00
Dinner pp	395.00
Lunch pp	217.00
Full 3 Course Lunch pp	325.00
Lunch pack pp	215.00
Camping pp/night	325.00

Please see the room configuration at the end of the rate sheet

ACTIVITIES AT OMARUNGA EPUPA-FALLS CAMP:

ACTIVITIES ARE SUBJECT TO AVAILABILITY. PRICES MAY VARY. ALL RATES ARE N\$ PER PERSON.

DESCRIPTION	DEPARTURE	DURATION	RATE N\$ PP
Visit a Himba village (guided): Experience the traditional way of life of the Himba in the Epupa area. Included refreshments and a light snack.	+8:00 am Please enquire at reception	±3-4hrs	1040.00
Sundowner Walk (guided): Enjoy a Scenic sundowner hill above the Epupa Falls where snacks and drinks will be provided.	+5:00 pm Please enquire at reception	±2hrs	450.00
Fly-In Day Visit (visit to a Himba village and excursion to the Epupa Falls): Guests are collected from the airstrip and taken to a nearby Himba village for an authentic cultural experience. Light snacks and refreshments are included.	On request	On request	1770.00
Kunene River Walk (guided): Walk along the banks of the Kunene River. This is also a great walk for bird enthusiasts.	On request	±2 hrs	425.00
River Rafting on the Kunene River (guided): Fun and Excitement! Explore the Kunene River by rafting boat.	Please enquire for more details	±2.5hrs	RATE N\$ pp available at the lodge
Transfer to Epupa Airstrip (return) max. 6 pax per car including luggage	On request	±3km one way	1210.00 per vehicle





ETOSHA SAFARI LODGE

10 KM SOUTH OF ANDERSSON GATE ON THE C 38 (ETOSHA NATIONAL PARK)

Sip on a drink while watching the ruby sun dip into the mopane woodland. This stylish lodge offers 65 chalets that provide a peaceful base from which to explore the animal bounty of Etosha National Park.

ETOSHA SAFARI LODGE All rates N\$ and include VAT & levies Rate validity 01.11.2024 - 31.10.2025	RACK RATE N\$ PP
Double/twin/triple/family room - sharing: bed & breakfast pp/night.	3075.00
Single room: bed & breakfast pp/night	3845.00
Dinner pp - buffet	545.00
Lunch pp - alternatively à la carte at the lodge	217.00
Full 3 Course Lunch pp - alternatively à la carte at the lodge	325.00
Lunch pack pp	215.00

Please see the room configuration at the end of the rate sheet

ACTIVITIES AT ETOSHA SAFARI LODGE:

ACTIVITIES ARE SUBJECT TO AVAILABILITY. PRICES MAY VARY. ALL RATES ARE N\$ PER PERSON.
ANY CHANGES IN NATIONAL PARK FEES WILL BE REFLECTED IN OUR RATES ACCORDINGLY.

DESCRIPTION	DEPARTURE	DURATION	RATE N\$ PP
Morning/Afternoon Half-Day Excursion to the Etosha National Park (guided): Explore the National Park and its amazing wildlife in a 9-seater game vehicle. Refreshments, entrance fees to the National Park, and passenger liability insurance are included.	30min before sunrise ±14h00 (enquire at reception)	±5-6hrs	1250.00
Full-Day Excursion to the Etosha National Park (guided): Explore the National Park and its amazing wildlife in a 9-seater game vehicle. Refreshments, snacks, entrance fees to the National Park, and passenger liability insurance are included.	30min before sunrise	±9hrs	1650.00
Guided Walks (2 - 3.5 km) Enjoy the discovery walk through the mopane woods and learn about the indigenous plants, birds, and other wildlife. Refreshments included	(morning or afternoon)	±1hr ±2hrs	425.00
Transfer to Okutala airstrip in an open vehicle (return)	On request	30km one way	535.00





THE EKIPIA ETOSHA POD

10 KM SOUTH OF ANDERSSON GATE ON THE C 38 (ETOSHA NATIONAL PARK)

Inspired by the beautifully crafted ekipa of the Bantu People; The Ekipa rises majestically amidst the mopane trees. This unique sanctuary, tailored for two, exudes an atmosphere of mystique and ancient customs, beckoning guests to immerse themselves in the captivating charm of the African Bush.

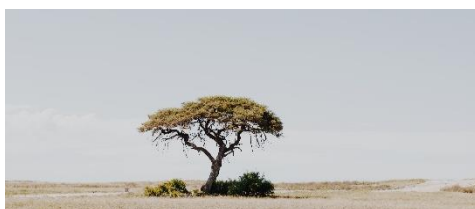
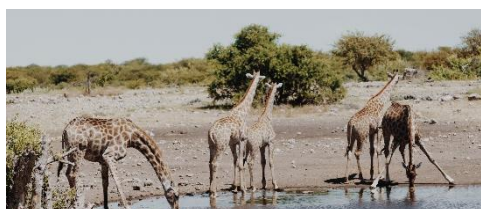
- The Etosha Pod is part of the Gondwana Secret Collection and situated 10km south of Etosha National Park's Anderson Gate.
- There is only one Ekipa Pod. A spacious double-story suite, including an open plan kitchen, dining, and lounge area; an en suite room with balcony and an outdoor area fully equipped with barbeque facilities, as well as a private plunge pool and outdoor shower. Upstairs, a romantic and cozy ensuite bedroom awaits which can be extended by rolling out your bed onto the balcony for a 180-degree view of the sky and its beckoning constellations.
- Guests arrive at the Gondwana Etosha Collection, where the dedicated host will receive guests and ensure their stay is to their liking. From there, follow the en-route signage to the Etosha Pod's Private Reception.
- Check-in is at 14:00 and Check-out time is 10:00 local time.
- The Ekipa Etosha Pod is a 2-guest exclusive lodge. Children under 14 years old are not permitted, but children 14 years and older are welcome if the total number of guests is 2.
- It is fully inclusive of all meals & drinks, with exclusive activities on offer within the property grounds and Etosha National Park
- There is an equipped kitchen and a fully stocked bar, as well as barbeque facilities in a terraced outdoor space. Meals are pre-prepared according to the preferences of the guests.
- To guarantee complete exclusivity and intimacy, there is no service staff or chef based at the Etosha Pod, during the stay of the guests, however, guests always have radio contact with their host.
- A private chef can be arranged upon request to prepare and serve dinner.
- Free WIFI is available and USB ports for charging equipment are provided.
- The Ekipa Etosha Pod is equipped with air conditioning.

THE EKIPIA ETOSHA POD	RATE N\$
All rates N\$ and include VAT & levies Rate validity 01.11.2024 - 31.10.2025	
Per room/night, inclusive of food and beverage, max 2 pax/room	27 500.00

ACTIVITIES AT THE EKIPIA:

ACTIVITIES ARE SUBJECT TO AVAILABILITY. PRICES MAY VARY. ALL RATES ARE N\$ PER PERSON.
ANY CHANGES IN NATIONAL PARK FEES WILL BE REFLECTED IN OUR RATES ACCORDINGLY.

DESCRIPTION	DEPARTURE	DURATION	RATE N\$ PP
Morning/Afternoon Half-Day Excursion to the Etosha National Park (guided): Explore the National Park and its amazing wildlife in a 4x4 game viewer with your designated guide.	30min before sunrise ±14h00 (enquire at reception)	±5-6hrs	Included
Full-Day Excursion to the Etosha National Park (guided): Explore the National Park and its amazing wildlife in a 4x4 game viewer with your dedicated guide.	30min before sunrise	±9hrs	Included
Guided Walks (2 - 3.5 km) Enjoy the discovery walk through the mopane woods and learn about the indigenous plants, birds, and other wildlife. Refreshments included	(morning or afternoon)	±1hr ±2hrs	Included
Transfer to Okutala airstrip in an open vehicle (return)	On request	30km one way	535.00





ETOSHA SAFARI CAMP INCL. CAMPING

10 KM SOUTH OF ANDERSSON GATE ON THE C 38 (ETOSHA NATIONAL PARK)

Tap toes to an African beat in the novel Oshebeena Bar and relax at this friendly Camp, 10 kilometres from Etosha National Park. 50 chalets, shaded by mopane trees, and a grassy campsite provide a comfortable home from which to explore the abundant animal kingdom. Legendary.

ETOSHA SAFARI CAMP All rates N\$ and include VAT & levies Rate validity 01.11.2024 - 31.10.2025	RACK RATE N\$ PP
Double/twin/triple/family room - sharing: bed & breakfast pp/night.	1980.00
Single room: bed & breakfast pp/night	2472.00
Dinner pp	395.00
Lunch pp - alternatively à la carte at the lodge	217.00
Full 3 Course Lunch pp - alternatively à la carte at the lodge	325.00
Lunch pack pp	215.00
Etosha Safari Campsite pp/night	325.00

Please see the room configuration at the end of the rate sheet

ACTIVITIES AT ETOSHA SAFARI CAMP:

ACTIVITIES ARE SUBJECT TO AVAILABILITY. PRICES MAY VARY. ALL RATES ARE N\$ PER PERSON.
ANY CHANGES IN NATIONAL PARK FEES WILL BE REFLECTED IN OUR RATES ACCORDINGLY.

DESCRIPTION	DEPARTURE	DURATION	RATE N\$ PP
Morning/Afternoon Half-Day Excursion to the Etosha National Park (guided): Explore the National Park and its amazing wildlife in a 24-seater game vehicle. Refreshments, entrance fees to the National Park, and passenger liability insurance are included.	30min before sunrise ±14h00 (enquire at reception)	±5-6hrs	1250.00
Full-Day Excursion to the Etosha National Park (guided): Explore the National Park and its amazing wildlife in a 24-seater game vehicle. Refreshments, snacks, entrance fees to the National Park, and passenger liability insurance are included.	30min before sunrise	±9hrs	1650.00
Guided Walks (2 - 3.5 km) Enjoy the discovery walk through the mopane woods and learn about the indigenous plants, birds, and other wildlife. Refreshments included	(morning or afternoon)	±1hr ±2hrs	425.00
Transfer to Okutala airstrip in an open vehicle (return)	On request	30km one way	535.00





ETOSHA SAFARI CAMPING2GO

AT ETOSHA SAFARI CAMP, 10 KM SOUTH OF ANDERSSON GATE ON THE C 38
(ETOSHA NATIONAL PARK)

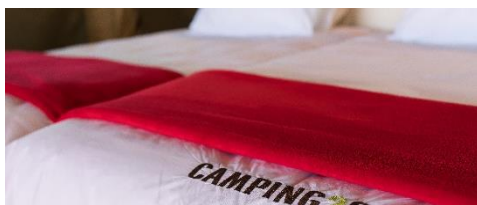
Roughing it may not be everyone's cup of tea. The new Etosha Camping2Go product now offers an effortless outdoor experience to anyone who wants to spend time in nature without the hassle of traditional camping. These eight tented chalets each offer a full en-suite bathroom, four beds, and a fully equipped kitchen. Bonus features of this product are that guests at Etosha Camping2Go have full access to all the facilities (activities, pool, bar, restaurant, etc.) available at Etosha Safari Camp.

ETOSHA SAFARI Camping2Go All rates N\$ and include VAT & levies Rate validity 01.11.2024 - 31.10.2025	RACK RATE N\$ PP
Camping2Go - Self-catering tents with en-suite bathrooms - sharing: bed only, pp/night.	985.00
Camping2Go - Self-catering tents with en-suite bathrooms - single: bed only, pp/night.	1969.00
Dinner pp - buffet at Etosha Safari Camp	395.00
Breakfast pp - buffet at Etosha Safari Camp	270.00
Lunch pp - alternatively à la carte at Etosha Safari Camp	217.00

ACTIVITIES AT ETOSHA SAFARI CAMP:

ACTIVITIES ARE SUBJECT TO AVAILABILITY. PRICES MAY VARY. ALL RATES ARE N\$ PER PERSON.
ANY CHANGES IN NATIONAL PARK FEES WILL BE REFLECTED IN OUR RATES ACCORDINGLY.

DESCRIPTION	DEPARTURE	DURATION	RATE N\$ PP
Morning/Afternoon Half-Day Excursion to the Etosha National Park (guided): Explore the National Park and its amazing wildlife in a 24-seater game vehicle. Refreshments, entrance fees to the National Park, and passenger liability insurance are included.	30min before sunrise ±14h00 (enquire at reception)	±5-6hrs	1250.00
Full-Day Excursion to the Etosha National Park (guided): Explore the National Park and its amazing wildlife in a 24-seater game vehicle. Refreshments, snacks, entrance fees to the National Park, and passenger liability insurance are included.	30min before sunrise	±9hrs	1650.00
Guided Walks (2 - 3.5 km) Enjoy the discovery walk through the mopane woods and learn about the indigenous plants, birds, and other wildlife. Refreshments included	(morning or afternoon)	±1hr ±2hrs	425.00
Transfer to Okutala airstrip in an open vehicle (return)	On request	30km one-way	535.00





ETOSHA KING NEHALE LODGE

1 KM NORTH OF KING NEHALE GATE (NORTH-WESTERN SIDE OF ETOSHA NATIONAL PARK)

One kilometer outside of the Etosha King Nehale Gate and Etosha National Park, this is the gateway to the kingdoms of the north. This lodge hosts 40 luxurious bungalows and allows guests convenient access to the National Park as well as the untapped destination that is the central northern region and the unique Oshiwambo culture. One of the highlights offered at Etosha King Nehale Lodge is a game drive into the Etosha National Park with exclusive access to a waterhole 10 km into the park. The hide at this waterhole offers game viewing in comfort and proximity to wildlife.

ETOSHA KING NEHALE All rates N\$ and include VAT & levies Rate validity 01.11.2024 - 31.10.2025	RACK RATE N\$ PP
Double/twin/triple/family room - sharing: bed & breakfast pp/night.	3295.00
Single room: bed & breakfast pp/night	4116.00
Dinner pp	545.00
Lunch pp- alternatively à la carte at the lodge	217.00
Full 3 Course Lunch pp - alternatively à la carte at the lodge	325.00
Lunch pack pp	215.00

Please see the room configuration at the end of the rate sheet.

ACTIVITIES AT ETOSHA KING NEHALE LODGE:

ACTIVITIES ARE SUBJECT TO AVAILABILITY. PRICES MAY VARY. ALL RATES ARE N\$ PER PERSON.
ANY CHANGES IN NATIONAL PARK FEES WILL BE REFLECTED IN OUR RATES ACCORDINGLY.

DESCRIPTION	DEPARTURE	DURATION	RATE N\$ PP
Morning/Afternoon Half-Day Excursion to the Etosha National Park (guided): Explore the National Park and its amazing wildlife in a 9-seater game vehicle. Refreshments, entrance fees to the National Park, and passenger liability insurance are included.	30min before sunrise ±14h00 (enquire at reception)	±5-6hrs	1450.00
Full-Day Excursion to the Etosha National Park (guided): Explore the National Park and its amazing wildlife in a 9-seater game vehicle. Refreshments, snacks, entrance fees to the National Park, and passenger liability insurance are included.	30min before sunrise	±9hrs	2145.00
Excursion to Private Waterhole in Etosha National Park (guided): Come face to face with Etosha's wildlife in the safety and comfort of our hide. Only King Nehale guests have access to this water hole. Snacks and refreshments included. Max 18 pax per departure.	AM (± 30 min before sunrise) PM (± 3hrs before sunset)	±3hrs	1045.00
Cultural Experience: We are currently busy investigating different possibilities to be able to offer the best possible experience for our guests. Please enquire for more information with our Reservations or Sales Department	mornings	±9hrs	1075.00
Transfer to/from Ondangwa in a closed 9-seater vehicle (one way)	On request	102km one way	1800.00 per vehicle
Transfer to/from Mokuti in a closed 9-seater vehicle (one way)	On request	58km one way	940.00 per vehicle
Transfer to/from Mushara in a closed 9-seater vehicle (one way)	On request	65km one way	1040.00 per vehicle
Transfer to/from Okaukuejo in a closed 9-seater vehicle (one way)	On request	177km one way	2855.00 per vehicle





HAKUSEMBE RIVER LODGE INCL. CAMPING

16 KM WEST OF RUNDU ON THE B 10 (OKAVANGO)

A lush green oasis on the banks of the Okavango River. Absorb river peace from one of the chalets, hop aboard the Hakusembe River Queen, stroll to the cultural village, or just relax on the deck listening to the soft symphony of feathered friends.

HAKUSEMBE RIVER LODGE All rates N\$ and include VAT & levies Rate validity 01.11.2024 - 31.10.2025	RATE N\$ PP
Double/twin/triple/family room - sharing: bed & breakfast pp/night.	3036.00
Single room: bed & breakfast pp/night	3795.00
Dinner pp	545.00
Lunch - alternatively à la carte at the lodge	217.00
Full 3 Course Lunch pp - alternatively à la carte at the lodge	325.00
Lunch pack pp	215.00
Hakusembe River Campsite pp/night	325.00

Please see the room configuration at the end of the rate sheet

ACTIVITIES AT HAKUSEMBE RIVER LODGE:

ACTIVITIES ARE SUBJECT TO AVAILABILITY. PRICES MAY VARY. ALL RATES ARE N\$ PER PERSON.

DESCRIPTION	DEPARTURE	DURATION	RATE N\$ PP
Sunset Boat Cruise (guided): Experience the water world of the Okavango on a romantic boat trip as the sun goes down. Refreshments and a light snack are included.	1 ½hrs before sunset	±1 ½hrs	440.00
Morning Boat Cruise (guided) for Bird Lovers: Refreshments and a light snack are included.	Mornings	±1 ½hrs	440.00
Fishing Trips (guided, min/max 2 persons per boat): Basic tackle and bait included. Lost or broken fishing equipment is to be replaced at the guest's expense. The fishing license is not included in the RATE N\$ pp and is subject to the Town Council's requirement (contact lodge manager for arrangement). This activity is seasonal and depends on the water level. All fishing is on a catch-and-release basis.	On request	On request	275.00 /h
Fishing Excursion for enthusiastic anglers: We will gladly submit a detailed offer for a tailor-made fishing excursion. All fishing is on a catch-and-release basis. This activity is seasonal and depends on the water level.	On request	On request	on request
Transfer from Hakusembe to Rundu Airport – return, min 2 pax	On request	10km one way	335.00





HAKUSEMBE RIVER CAMPING2GO

16 KM WEST OF RUNDU ON THE B 10 (OKAVANGO)

With Camping2Go, the amazing outdoor serenity of camping is paired with a hassle-free self-catering product. Each of the 4 tents hosts 4 beds, an en suite bathroom, and a fully equipped kitchen. To top it off, guests at Hakusembe River Camping2Go have full access to all the facilities (activities, pool, bar, restaurant, etc.) available at Hakusembe River Lodge.

HAKUSEMBE RIVER Camping2Go All rates N\$ and include VAT & levies Rate validity 01.11.2024 - 31.10.2025	RATE N\$ PP
Camping2Go - Self-catering tents with en-suite bathrooms - sharing: bed only, pp/night.	985.00
Camping2Go - Self-catering tents with en-suite bathrooms - single: bed only, pp/night.	1969.00
Dinner pp - buffet at Hakusembe River Lodge	545.00
Breakfast pp - buffet at Hakusembe River Lodge	270.00
Lunch pp - alternatively à la carte at Hakusembe River Lodge	217.00

ACTIVITIES AT HAKUSEMBE RIVER LODGE:

ACTIVITIES ARE SUBJECT TO AVAILABILITY. PRICES MAY VARY. ALL RATES ARE N\$ PER PERSON.

DESCRIPTION	DEPARTURE	DURATION	RATE N\$ PP
Sunset Boat Cruise (guided): Experience the water world of the Okavango on a romantic boat trip as the sun goes down. Refreshments and a light snack are included.	1 ½hrs before sunset	±1 ½hrs	440.00
Morning Boat Cruise (guided) for Bird Lovers: Refreshments and a light snack are included.	Mornings	±1 ½hrs	440.00
Fishing Trips (guided, min/max 2 persons per boat): Basic tackle and bait included. Lost or broken fishing equipment is to be replaced at the guest's expense. The fishing license is not included in the rate and is subject to the Town Council's requirement (contact lodge manager for arrangement). This activity is seasonal and depends on the water level. All fishing is on a catch-and-release basis.	On request	On request	275.00 /h
Fishing Excursion for enthusiastic anglers: We will gladly submit a detailed offer for a tailor-made fishing excursion. All fishing is on a catch-and-release basis. This activity is seasonal and depends on the water level.	On request	On request	on request
Transfer from Hakusembe to Rundu Airport – return, min 2 pax	On request	10km one way	335.00





NAMUSHASHA RIVER LODGE INCL. CAMPING

24 KM SOUTH OF KONGOLA ON THE C 49 (ZAMBEZI / CAPRIVI)

Experience this Zambezi kingdom from 25 chalets dotted along the leafy riverbank of the Kwando. Watch the vervet monkeys leap along tree branches, salute wizened elephant giants in the Bwabwata National Park, and glide through wild waterways. Revel in Namushasha gold.

Please see the room configuration at the end of the rate sheet

NAMUSHASHA RIVER LODGE	RATE N\$ PP
All rates N\$ and include VAT & levies Rate validity 01.11.2024 - 31.10.2025	
Double/twin/triple/family room - sharing: bed & breakfast pp/night.	3036.00
Single room: bed & breakfast pp/night	3795.00
Dinner pp	545.00
Lunch pp - alternatively à la carte at the lodge	217.00
Full 3 Course Lunch pp - alternatively à la carte at the lodge	325.00
Lunch pack pp	215.00
Namushasha River Campsite pp/night	325.00

ACTIVITIES AT NAMUSHASHA RIVER LODGE:

ACTIVITIES ARE SUBJECT TO AVAILABILITY. PRICES MAY VARY. ALL RATES ARE N\$ PER PERSON.
ANY CHANGES IN NATIONAL PARK FEES WILL BE REFLECTED IN OUR RATES ACCORDINGLY.

DESCRIPTION	DEPARTURE	DURATION	RATE N\$ PP
Bwabwata National Park Excursions – Morning / Afternoon Drive (guided): Enjoy a game drive into the Bwabwata National Park. Park entrance fees, short boat transfers, snacks, and refreshments are included.	±8h00 ±15h00	±3hrs	940.00
Afternoon Boat Cruise (guided): Experience an unforgettable boat trip on the Kwando River. Refreshments and light snacks are included.	±15h00	±3hrs	940.00
Sundowner Boat Cruise (guided): Watch the magical sunset while experiencing an unforgettable boat trip on the Kwando River. Refreshments and light snacks are included.	±1 ½ hrs before sunset	±1 ½hrs	580.00
Morning Boat Cruise (guided): for the early birds Refreshments and light snacks are included.	±8h00	±1 ½hrs	580.00
Fishing Trips (guided, min/max 2 people per boat): Join a guided fishing trip and catch species such as catfish, tilapia, nambwe, and tigerfish. Boat and basic tackle & bait are included. A fishing license can be obtained at the lodge but is not included in the RATE N\$ pp. Lost or broken fishing equipment is to be replaced at the guest's expense. Catch and release	On request	On request	365.00 /h
Fishing Excursion for enthusiastic anglers: We will gladly submit a detailed offer for a tailor-made fishing excursion. All fishing is on a catch-and-release basis. This activity is seasonal and depends on the water level.	On request	On request	on request
Transfer Namushasha to Katima Airport Mpacha – return, min 2 pax	On request	120km one way	955.00
Package Transfer Airport & 3 Zambezi Gondwana properties– return, min 2 pax Namushasha River Lodge, Zambezi Mubala Lodge, Chobe River Camp	On request		1115.00





NAMUSHASHA RIVER CAMPING2GO

24 KM SOUTH OF KONGOLA ON THE C 49 (ZAMBEZI / CAPRIVI)

With Camping2Go, the amazing outdoor serenity of camping is paired with a hassle-free self-catering product. Each of the 4 tents hosts 4 beds, an en suite bathroom, and a fully equipped kitchen. To top it off, guests at Namushasha River Camping2Go have full access to all the facilities (activities, pool, bar, restaurant, etc.) available at Namushasha River Lodge.

NAMUSHASHA RIVER Camping2Go All rates N\$ and include VAT & levies Rate validity 01.11.2024 - 31.10.2025	RATE N\$ PP
Camping2Go - Self-catering tents with en-suite bathrooms - sharing: bed only, pp/night.	985.00
Camping2Go - Self-catering tents with en-suite bathrooms - single: bed only, pp/night.	1969.00
Dinner pp - buffet at Namushasha River Lodge	545.00
Breakfast pp - buffet at Namushasha River Lodge	270.00
Lunch pp - alternatively à la carte at Namushasha River Lodge	217.00

ACTIVITIES AT NAMUSHASHA RIVER LODGE:

ACTIVITIES ARE SUBJECT TO AVAILABILITY. PRICES MAY VARY. ALL RATES ARE N\$ PER PERSON.
ANY CHANGES IN NATIONAL PARK FEES WILL BE REFLECTED IN OUR RATES ACCORDINGLY.

DESCRIPTION	DEPARTURE	DURATION	RATE N\$ PP
Bwabwata National Park Excursions – Morning / Afternoon Drive (guided): Enjoy a game drive into the Bwabwata National Park. Park entrance fees, short boat transfers, snacks, and refreshments are included.	±8h00 ±15h00	±3hrs	940.00
Afternoon Boat Cruise (guided): Experience an unforgettable boat trip on the Kwando River. Refreshments and light snacks are included.	±15h00	±3hrs	940.00
Sundowner Boat Cruise (guided): Watch the magical sunset while experiencing an unforgettable boat trip on the Kwando River. Refreshments and light snacks are included.	±1 ½ hrs before sunset	±1 ½hrs	580.00
Morning Boat Cruise (guided): for the early birds Refreshments and light snacks are included.	±8h00	±1 ½hrs	580.00
Fishing Trips (guided, min/max 2 people per boat): Join a guided fishing trip and catch species such as catfish, tilapia, nambwe, and tigerfish. Boat and basic tackle & bait are included. A fishing license can be obtained at the lodge but is not included in the RATE N\$ pp. Lost or broken fishing equipment is to be replaced at the guest's expense. Catch and release	On request	On request	365.00 /h
Fishing Excursion for enthusiastic anglers: We will gladly submit a detailed offer for a tailor-made fishing excursion. All fishing is on a catch-and-release basis. This activity is seasonal and depends on the water level.	On request	On request	on request
Transfer Namushasha to Katima Airport Mpacha – return, min 2 pax	On request	120km one way	955.00
Package Transfer Airport & 3 Zambezi Gondwana properties – return, min 2 pax Namushasha River Lodge, Zambezi Mubala Lodge, Chobe River Camp)	On request		1115.00





NAMUSHASHA RIVER VILLA

24 KM SOUTH OF KONGOLA ON THE C 49 (ZAMBEZI / CAPRIVI)

Exclusive and intimate settings await along the waters of the Kwando River. Enjoy privacy in the Namushasha River Villa, anchored in its own channel of the Kwando River, where the wildlife of the Bwabwata National Park lazily moves along the banks. Guests are ferried to and from the villa and can expect a luxurious stay and break away from the traveling norm.

- The Namushasha River Villa is part of the Gondwana Secret Collection, based on the Kwando River.
- The Namushasha River Villa is fondly named Masheli – which is the word for Water Lily in the local Bantu language.
- There is only one River Villa, which consists of a spacious two-story suite, including an open plan kitchen, dining, and lounge area; an en suite room with a balcony and an outdoor area fully equipped with barbeque facilities
- Guests arrive at Namushasha River Lodge and from there the River Villa experience will begin.
- Check-in is at 14:00 and Check-out time is 10:00 local time.
- Desert Whisper is a 2-guest exclusive lodge. Children under 14 years old are not permitted, but children 14 years and older are welcome if the total number of guests is 2.
- It is fully inclusive of all meals & drinks, with an exclusive game drive experience, in either the morning or afternoon in the Bwabwata National Park.
- There is an equipped kitchen and a fully stocked bar, as well as barbeque facilities on the deck. Meals are pre-prepared according to the preferences of the guests. The River Villa is equipped with air conditioning.
- There is no service staff or chef based at the River Villa, during the stay of the guests to guarantee complete exclusivity and intimacy, however, guests always have radio contact with their host.
- A private chef can be arranged upon request to prepare and serve dinner. However, we are not allowed to operate on the river during dark hours, therefore meals will be scheduled around that to allow enough time for the chef to get to the villa and back to the lodge during daylight.
- After the experience guests are ferried back to the lodge.
- Free WIFI is available and USB ports for charging equipment are provided.

NAMUSHASHA RIVER VILLA All rates N\$ and include VAT & levies Rate validity 01.11.2024 - 31.10.2025	RATE N\$
Per room/night, fully inclusive, max 2 pax/room	27 500.00

TRANSFERS	DEPARTURE	DURATION	RATE N\$ PER VEHICLE
Transfer Namushasha to Katima Airport Mpacha – return, min 2 pax	On request	120km one way	955.00
Package Transfer Airport & 3 Zambezi Gondwana properties – return, min 2 pax Namushasha River Lodge, Zambezi Mubala Lodge, and Chobe River Camp	On request		1115.00

TRANSFERS ARE SUBJECT TO AVAILABILITY AND NEED TO BE PRE-BOOKED. PRICES MAY VARY.





ZAMBEZI MUBALA LODGE

40 KM EAST OF KATIMA MULILO OFF THE B8 (ZAMBEZI / CAPRIVI)

The mighty Zambezi Riverbanks hide the sanctuary that is Zambezi Mubala Lodge. This is a convenient location to blissfully break away and relax or venture into a bird-lovers paradise as the banks host one of the largest Carmine Bee-eater colonies. Watch the colors of the river come to life and dance along with the steady current.

ZAMBEZI MUBALA LODGE All rates N\$ and include VAT & levies Rate validity 01.11.2024 - 31.10.2025	RATE N\$ PP
Double/twin/triple/family room - sharing: bed & breakfast pp/night.	3036.00
Single room: bed & breakfast pp/night	3794.00
Dinner pp	545.00
Lunch pp - alternatively à la carte at the lodge	217.00
Full 3 Course Lunch pp - alternatively à la carte at the lodge	325.00
Lunch pack pp	215.00

Please see the room configuration at the end of the rate sheet

Guests of the Zambezi Mubala Lodge will arrive at the Zambezi Mubala Camp and will be transferred by boat to the location of the Lodge.

ACTIVITIES AT ZAMBEZI MUBALA LODGE:

ACTIVITIES ARE SUBJECT TO AVAILABILITY. PRICES MAY VARY. ALL RATES ARE N\$ PER PERSON.

DESCRIPTION	DEPARTURE	DURATION	RATE N\$ PP
Sundowner Boat Cruise (guided): Experience the water world of the Zambezi River on a romantic boat trip as the sun goes down. Refreshments and light snacks are included.	±1 ½ hrs before sunset	±1 ½hrs	440.00
Morning / Afternoon Boat Cruise (guided): Capture the colours of the Zambezi River birdlife on a relaxing boat cruise. Ideal for birding/photography enthusiasts. Refreshments and light snacks are included.	±8h00 ±15h00	±3hrs	750.00
Nature Walk to the bird colonies (guided): Only to be booked directly at the Lodge; seasonal	On request	±3hrs	available at the lodge
Fishing Trips (guided, min/max 2 persons per boat): Join a guided fishing trip and catch species such as catfish, tilapia, nambwe, and tigerfish. Boat and basic tackle & bait are included. A fishing license can be obtained at the lodge but is not included in the RATE N\$ pp. Lost or broken fishing equipment is to be replaced at the guest's expense. Catch and release	On request	1hr	365.00 /h
Fishing Excursion for enthusiastic anglers: We will gladly submit a detailed offer for a tailor-made fishing excursion. All fishing is on a catch-and-release basis. This activity is seasonal and depends on the water level.	On request	On request	on request
Transfer Zambezi Mubala Lodge to Katima Airport Mpacha – return, min 2 pax	On request	50km one way	480.00
Package Transfer Airport & 3 Zambezi Gondwana properties – return, min 2 pax Namushasha River Lodge, Zambezi Mubala Lodge, Chobe River Camp	On request		1115.00
Excursions to Vic Falls: Contact us for more information. Excursions to Chobe National Park: Contact us for more information.	On request	On request	on request





ZAMBEZI MUBALA CAMP INCL. CAMPING

40 KM EAST OF KATIMA MULILO OFF THE B8 (ZAMBEZI / CAPRIVI)

A bird-lovers paradise and a fisherman's dream, this camp has a unique way of ticking all the right boxes. Tented chalets bring guests as close as possible to nature but offer a level of convenience that allows for relaxation like no other.

ZAMBEZI MUBALA CAMP All rates N\$ and include VAT & levies Rate validity 01.11.2024 - 31.10.2025	RATE N\$ PP
Self-catering tents with en-suite bathrooms - sharing: bed only, pp/night.	985.00
Self-catering tents with en-suite bathrooms - single: bed only, pp/night.	1969.00
Zambezi Mubala Campsite pp/night	325.00
Lunch pack pp	215.00
Dinner pp - pre-booked, alternatively à la carte at the camp	395.00
Breakfast pp - pre-booked, alternatively à la carte at the camp	270.00

An à la carte restaurant is available at Zambezi Mubala Camp.

ACTIVITIES AT ZAMBEZI MUBALA CAMP:

ACTIVITIES ARE SUBJECT TO AVAILABILITY. PRICES MAY VARY. ALL RATES ARE N\$ PER PERSON.

DESCRIPTION	DEPARTURE	DURATION	RATE N\$ PP
Sundowner Boat Cruise (guided): Experience the water world of the Zambezi River on a romantic boat trip as the sun goes down. Refreshments and light snacks are included.	±1 ½ hrs before sunset	±1 ½hrs	440.00
Morning / Afternoon Boat Cruise (guided): Capture the colours of the Zambezi River birdlife on a relaxing boat cruise. Ideal for birding/photography enthusiasts. Refreshments and light snacks are included.	±8h00 ±15h00	±3hrs	750.00
Nature Walk to the bird colonies (guided): Only to be booked directly at the Lodge; seasonal	On request	±3hrs	available at the lodge
Fishing Trips (guided, min/max 2 persons per boat): Join a guided fishing trip and catch species such as catfish, tilapia, nambwe, and tigerfish. Boat and basic tackle & bait are included. A fishing license can be obtained at the lodge but is not included in the RATE N\$ pp. Lost or broken fishing equipment is to be replaced at the guest's expense. Catch and release	On request	1hr	365.00 /h
Fishing Excursion for enthusiastic anglers: We will gladly submit a detailed offer for a tailor-made fishing excursion. All fishing is on a catch-and-release basis. This activity is seasonal and depends on the water level.	On request	On request	on request
Transfer Zambezi Mubala Lodge to Katima Airport Mpacha (return), min 2 pax	On request	50km one way	480.00
Package Transfer Airport & 3 Zambezi Gondwana properties – return, min 2 pax Namushasha River Lodge, Zambezi Mubala Camp, Chobe River Camp	On request		1115.00
Excursions to Vic Falls: Contact us for more information.	On request	On request	on request
Excursions to Chobe National Park: Contact us for more information.	On request	On request	on request





CHOBE RIVER CAMP INCL. CAMPING

4KM FROM THE NGOMA BORDER POST BETWEEN BOTSWANA AND NAMIBIA (ZAMBEZI / CAPRIVI)

Gaze over the flood plains and enjoy luxurious solitude on the banks of the Chobe River. Assuring extraordinary experiences, we offer 20 tented chalets. The lodge was inspired by the natural beauty of the landscape and all chalets have been constructed using indigenous Mopane timber and canvas. This offers not only a stunning sight but also an environmentally conscious design. This region is Namibia's very own version of the Serengeti and offers a rare experience...one of the largest annual Zebra migrations in Africa. Activities may be seasonal but will always amaze and intrigue our guests. Chobe River Camp is a wildlife and birder's dream and is the ideal place to break away.

CHOBE RIVER CAMP	RACK RATE N\$ PP
All rates N\$ and include VAT & levies Rate validity 01.11.2024 - 31.10.2025	
Safari tents - sharing: bed & breakfast pp/night.	1970.00
Safari tents - single: bed & breakfast pp/night.	2462.50
Dinner pp - buffet	395.00
Lunch pp - alternatively à la carte at the lodge	217.00
Full 3 Course Lunch pp - alternatively à la carte at the lodge	325.00
Lunch pack pp	215.00
Chobe River Campsite pp/night	325.00

Please see the room configuration at the end of the rate sheet

ACTIVITIES AT CHOBE RIVER CAMP:

ACTIVITIES ARE SUBJECT TO AVAILABILITY. PRICES MAY VARY. ALL RATES ARE N\$ PER PERSON.

DESCRIPTION	DEPARTURE	DURATION	RATE N\$ PP
Morning / Afternoon Boat Cruise (guided, seasonal, on request only): Hop aboard the riverboat for early morning or late afternoon cruises on the Chobe River when the light slants to explore the channels and discover the diverse birdlife. Refreshments and light snacks are included.	±8h00 ±15h00	±3hrs	815.00
Full-Day Boat Cruise (guided, seasonal, min 4 people/max 10 people): Join a full-day boat cruise on the Chobe River and explore the channels and the diverse birdlife. Refreshments and a light lunch are included.	±11h00	±6hrs	1230.00
Sundowner Boat Cruise (guided, seasonal): Watch the sunset while enjoying a relaxing boat cruise on the Chobe River. Refreshments and light snacks are included.	±1 ½ hrs before sunset	±2hrs	505.00
In the dry season between mid-July and December, the Chobe River tends to hold so little water that boat trips are limited, with little or no access to river channels. We make every effort to maintain the activities or offer suitable alternatives. The safety of our guests comes first.			
Walking Trail (guided, seasonal, only to be booked directly at the Lodge, subject to availability):	On request	±1-2 hrs	available at the lodge
Canoe Trip (guided, subject to availability, only to be booked directly at the Lodge): Join this guided canoe trip and see the African world from a new perspective. Refreshments and a light snack are included.	On request	±1 ½ hrs	available at the lodge
Birding Drive (guided, subject to availability, only to be booked directly at the Lodge): Discover the diverse bird species on this guided drive, depending on the water level of the Chobe River. Refreshments and a light snack are included.	±07h00 / 8h00 ±3hrs before sunset	±3hrs	available at the lodge
Visit Traditional Mali Village: (unguided) Experience an open-air museum to learn about the traditional way of life of the local tribe Masubia, the largest of the Sub-ethnic groups found in Eastern Caprivi.	Enquire at reception	Enquire at reception	Enquire at reception
Transfer to Katima Airport Mpacha – return, min 2 pax	On request	90km one way	800.00
Package Transfer Airport & 3 Zambezi Gondwana properties– return, min 2 pax Namushasha River Lodge, Zambezi Mubala Lodge, Chobe River Camp	On request	On request	1115.00
Excursions to Vic Falls: Contact us for more information.	On request	On request	available at the lodge
Excursions to Chobe National Park: Contact us for more information.	On request	On request	available at the lodge





TERMS AND CONDITIONS: DIRECT CLIENTS

BOOKING PROCEDURES:

- Please check ALL booking details on the booking confirmation received.
- Please advise the Gondwana booking agent of incorrect booking details or changes immediately.
- Please note that the purchaser must check the final booking summary.
- Payment strictly 72 hours (3 days) after receipt of the booking summary, failing which the booking will be deleted from the system automatically.
- The status of the booking summary is PROVISIONAL and will only be converted to CONFIRMED, once the full payment is reflected in our bank.
- Bookings are subject to availability at the time of booking made.
- Bookings made directly on arrival must be paid in full at the facility (discounts for Card Holder applicable)

PAYMENT PROCEDURES:

Always use the booking reference number on the proof of payment

Send the proof of payment to your booking consultant's email: _____@gcnam.com or info@gondwana-collection.com

It is inevitable to have your proof of payment and booking confirmation from Gondwana with you at the time of check-in.

PAYMENT OPTIONS:

Gondwana Collection Namibia (not for The Weinberg, Okapuka Safari Lodge, The Pearls, or Klein Aus Vista)

Credit Card Payment Facility: Use our direct secure site <https://shop.directpay.online/paymybills/GondwanaCollectionNamibia> - (enter your booking number as reference)

EFT Payment

Bank: Bank Windhoek Limited
Account Name: Gondwana Collection Namibia (Pty) Ltd.
Account Number: 8014638686
Branch Code: 481-972

International Bank Transfer

SWIFT BWLINANX (International Transfers only) Swift Fees apply and will be for the payee's account.

OR

EFT Payment

Bank: FNB Business
Account Name: Gondwana Collection Namibia (Pty) Ltd.
Account Number: 622 624 541 78
Branch Code: 281 872 (from RSA please use universal branch Code 282 672)

International Bank Transfer

SWIFT FIRNNANX (International Transfers only) Swift Fees apply and will be for the payee's account.

Okapuka Safari Lodge

EFT Payment

Bank: Bank Windhoek Limited
Account Name: Okapuka Hospitality Management (Pty) Ltd
Account Number: 8028160405 (CHK)
Branch Code: 481-972

International Bank Transfer

SWIFT BWLINANX (International Transfers only) Swift Fees apply and will be for the payee's account.



The Weinberg, The Weinberg Urban Pod, The Pearls Beach Pods

EFT Payment

Bank: Bank Windhoek Limited
Account Name: Gondwana Hospitality Management (Pty) Ltd
Account Number: 8023839673 (CHK)
Branch Code: 481-972
International Bank Transfer
SWIFT BWLINANX (International Transfers only) Swift Fees apply and will be for the payee's account.

Klein Aus Vista

EFT Payment

Bank: Standard Bank Namibia
Account Name: Klein Aus Investments cc
Account Number: 60003862797
Branch Code: 087-373

CANCELLATION POLICY

+ 29 days prior to arrival:	10%
22 - 28 days prior to arrival:	20%
15 - 21 days prior to arrival:	30%
08 - 14 days prior to arrival:	50%
04 - 07 days prior to arrival:	75%
01 - 03 days prior to arrival:	90%

CHILD POLICY

Most of our offerings are child-friendly, except for Namib Dune Star Camp, The Desert Whisper, and Namushasha River Villa. Children up to 5 years old are complimentary; children from 6 to 13 years old are counted as occupants and receive a 50% discount on the rack rate for accommodation, pre-booked meals, and activities. Please contact the reservations team of Klein-Aus Vista for their child policy.

Rates are subject to change without prior notice.



FAMILY AND TRIPLE- ROOM CONFIGURATION



The lodges below offer bed and/or room configurations beyond twin/double. The configurations are specified below, and the list hereunder also indicates the family room arrangements for children of various ages. All are subject to availability.

THE WEINBERG HOTEL

1x Inter - connecting Courtyard Fountain Level rooms

1x Superior

- only 2 adults & 1 child under 13years - sleeper couch

7x Family lofts

- 2 adults & 2 kids under 13years only - sleeper couch

OKAPUKA SAFARI LODGE

1x Lux Family room

- 2 adults & 2 kids or 4 adults

1x Inter-leading family room

- 2 adults & 2 kids or 4 adults

Rooms 5 & 6 Sleeper Couch

- 2 adults & 2 kids under 13years only

KALAHARI ANIB LODGE

1x 3 Bedded Standard Family room

- 2 adults & 1 child or 3 adults

1x 4 Bedded Standard Family room

- 2 adults & 2 kids or 4 adults

1x Inter-leading Standard Family room

- 2 adults & 2 kids or 4 adults

4x Comfort Family rooms

- only 2 adults & 2 kids under 13 years – bunkbeds

KALAHARI FARMHOUSE

1x 4 Bedded family room

- 2 adults & 2 kids or 4 adults

1x Inter-leading Family room

- 2 adults & 2 kids or 4 adults

CANYON LODGE

2x 4 Bedded Family rooms

- 2 adults & 2 kids or 4 adults

CANYON VILLAGE

4x Triple rooms

- 2 adults & 1 child or 3 adults

3x Inter-leading Family rooms

- 2 adults & 2 kids or 4 adults

CANYON ROADHOUSE

3x Triple rooms

- 2 adults & 1 child or 3 adults

3x Inter-leading Family rooms

- 2 adults & 2 kids or 4 adults

NAMIB DESERT LODGE

4x Family rooms

- 2 adults & 2 kids or 4 adults

4x Triple rooms

- 2 adults & 2 kids or 3 adults

NAMIB DUNE STAR CAMP

2x Triple rooms

- 3 adults or 2 adults & 1 child above 14 years

THE DESERT GRACE LODGE

4x 4 Bedded Family rooms

- 2 adults & 2 kids or 4 adults

THE DELIGHT HOTEL

10x 4 Bedded Family rooms

- 2 adults & 2 kids or 4 adults

DAMARA MOPANE LODGE

6x Inter-leading Family rooms

- 2 adults & 2 kids or 4 adults

PALMWAG LODGE

1x Family room, one unit with 4 beds

- 2 adults & 2 kids or 4 adults

1x Family room

- 2 adults & 2 kids or 4 adults

OMARUNGA LODGE

1x Family room

- 2 adults & 2 kids only - Bunk beds



FAMILY AND TRIPLE- ROOM CONFIGURATION

ETOSHA SAFARI LODGE

5x Family rooms

- 2 adults & 2 kids or 4 adults

ETOSHA SAFARI CAMP

10x Family rooms

- 2 adults & 2 kids only - Bunk beds

3x Triple rooms

- 2 adults & 1 child or 3 adults

ETOSHA KING NEHALE

14x Family rooms

- 2 adults & 2 kids under 13 years only - sleeper couch

HAKUSEMBE RIVER LODGE

1x Family Villa

- 6 adults, shared bathroom

1x Family House

- 7 adults, 2 bathrooms

12 triple rooms

- 2 adults & 1 child or 3 adults

NAMUSHASHA RIVER LODGE

2x family rooms

- 4 adults or 2 adults & 2 kids

1x Triple room

- 2 adults & 1 child or 3 adults

1x Inter-Leading Family room

- 2 adults & 2 kids or 4 adults

ZAMBEZI MUBALA LODGE

4x Family rooms

- 2 adults & 2 kids or 4 adults - 2 rooms, bathroom in each

CHOBE RIVER LODGE

6x Triple rooms

- 2 adults & 1 child or 3 adults – 1 double bed and 1 twin bed, 1 ensuite bedroom



CONTACT DETAILS FOR ENQUIRIES:

Tel: + 264 61 427 200
after hours: +264 81 129 2424
info@gondwana-collection.com
www.gondwana-collection.com

Klein-Aus Vista:
Tel: + 264 63 258 116
info@klein-aus-vista.com

CAR RENTAL



info@namibia2go.com
+264 (81) 145-8202
namibia2go.com

TRAVELLER TRANSFERS



info@go2.na
+264-81-143-4473
go2.na