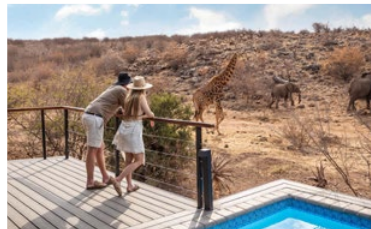


TUNINGI

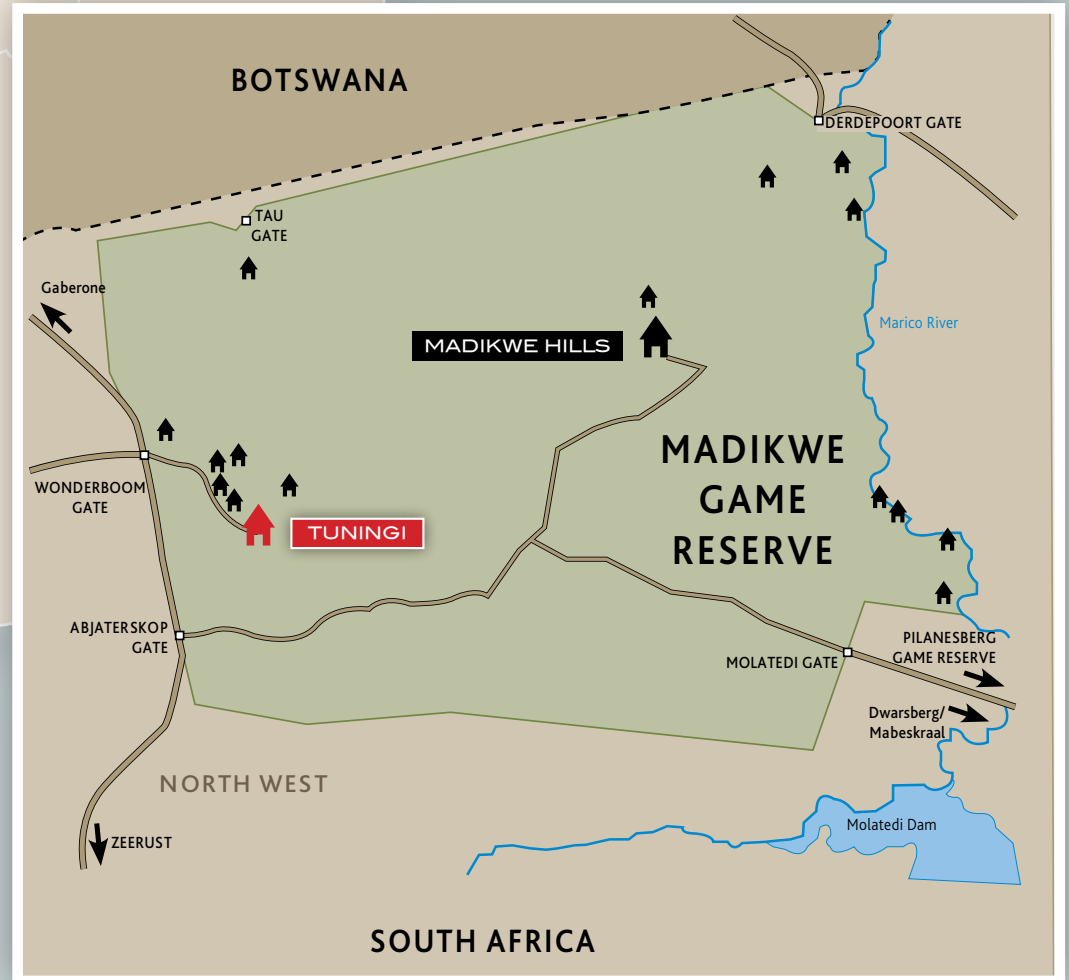
SAFARI LODGE



MADIKWE GAME RESERVE | NORTH-WEST PROVINCE

www.tuningi.com

Seasons in Africa
ADVENTURES • HOTELS • LODGES



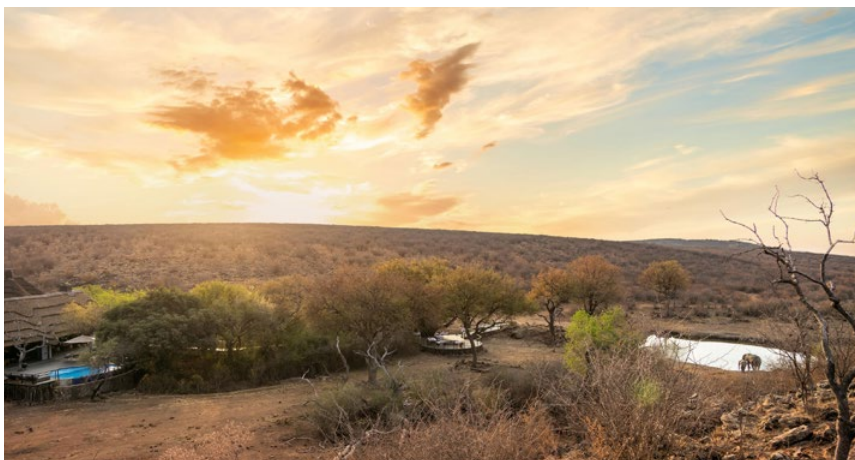
PLEASE NOTE: Drones are **STRICTLY PROHIBITED** in the Madikwe Game Reserve, failure to comply with this rule will result in a heavy fine or arrest by reserve management.



Tuningi Safari Lodge is located in the renowned Madikwe Game Reserve, a 75,000-hectare malaria-free protected area that is home to the Big 5.

Madikwe Game Reserve is a remarkable African success story, and Tuningi proudly represents this in magnificent style.

This private and exclusive lodge offers guests superior accommodation, complemented by an impressive Big 5 safari experience.



LOCATION

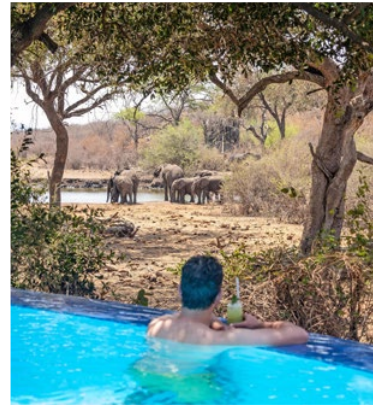
- Madikwe Game Reserve, North West Province
- Traversing over 75 000 hectares /165 000 acres / 750 square kilometers
- 4 hour 30 minute drive from Johannesburg
- 60 minute direct scheduled flight from Johannesburg to the reserve
- 20 minute drive from Airstrip to the Lodge

FACILITIES

The interiors of the Lodge are designed in an 'African Chic' theme. The main thatched building features beautiful indoor and outdoor lounges, an elegant dining room, and a magnificent rim-flow pool that overlooks the active waterhole.

These areas are connected by a sweeping wooden deck that leads to a boma situated under an ancient Fig Tree. The boma deck is ideal for outdoor dinners around a blazing log fire, allowing you to see and hear wildlife just a few feet away. Additionally, the underground hide at ground level provides an exceptional viewing experience of the wildlife that comes to drink at the waterhole.

- Lounge
- Dining room
- Bar
- Boma and viewing deck next to the water hole under an ancient Fig Tree
- Underground Hide at ground level on the edge of the waterhole.
- Superb South African wines
- Viewing deck around a rim-flow swimming pool overlooking an active waterhole
- Wi Fi in the Main Lodge area
- Variety of books in the library
- Satellite television (sport channels only)
- Small curio shop
- Well equipped gym for guests wanting to keep active in the bush.
- Small pool near second Family Suite and Gym





LUXURY SUITES

ACCOMMODATION

Tuningi Safari Lodge can accommodate up to 16 guests in four Luxury Suites and two exclusive Family Suites. Each Family Suite consists of two connected suites that share a spacious lounge leading onto a private deck and swimming pool.

The design of the Family Suites incorporates retractable doors and windows, allowing the interiors to blend seamlessly with the surrounding bush, creating an open and spacious atmosphere.

Each suite is spacious and private, featuring outdoor showers and wrap-around decks. Additionally, they come with a private plunge pool that overlooks a beautiful valley, which is frequented day and night by a variety of wildlife.

LUXURY SUITES

- 4 Luxury Suites (2 guests per suite)
- En-suite bathrooms
- Private wooden viewing deck, with private plunge pool
- Air-conditioning & heating
- Spacious lounge
- Bath
- Double basin
- Indoor and outdoor showers
- Mini bar stocked on arrival to your preference
- Wi-Fi
- Telephone - internal
- Mosquito nets
- Mosquito repellent
- Robes
- Slippers
- Hairdryer
- Umbrella
- Safe
- Tea / coffee facilities
- Mammal and bird reference guides
- Fashionable magazines

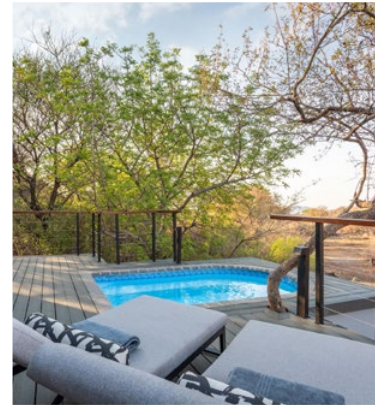
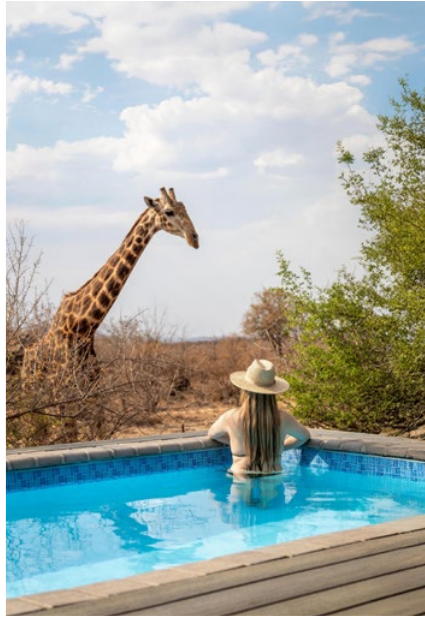


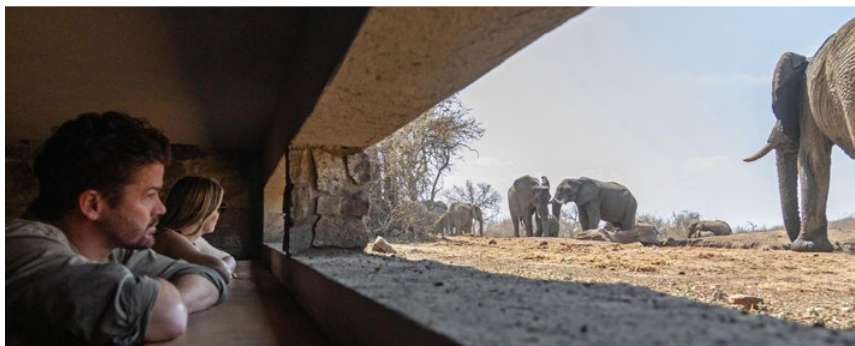
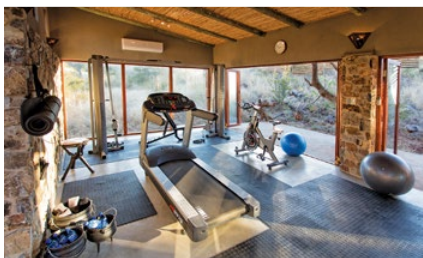
FAMILY SUITES



FAMILY SUITES

- 2 Family Suites (accommodating 4 guests)
- Spacious lounge
- Private wooden viewing deck, with private plunge pool
- Air-conditioning & heating
- En-suite bathrooms
- Bath
- Double basin
- Indoor and outdoor showers
- Mini bar stocked stocked on arrival to your preference
- Wi-Fi
- Telephone – internal
- Mosquito nets
- Mosquito repellent
- Robes
- Slippers
- Hairdryer
- Umbrella
- Safe
- Tea / coffee facilities
- Mammal and bird reference guides
- Fashionable magazines





ACTIVITIES

Madikwe Game Reserve offers a wealth of bio-diversity. Tuningi features exceptionally well-trained wildlife rangers, and with access to 750 square kilometers of traversing, opportunities for viewing the Big 5 are excellent.

- Big 5 game viewing (Lion, Elephant, Rhino, Leopard, Buffalo)
- Two game drives daily (morning & afternoon)
- Photographic safaris

WELLNESS

Pampering treatments can be enjoyed in the privacy of your suite:

- Indian Head massage
- Foot massage
- Full body massage
- Manicure and pedicure

GYM

Staying active in the bush is a delight at Tuningi. The gym seamlessly integrates with the surrounding nature, allowing guests to spot wildlife while they exercise. It is equipped with a treadmill, a spinning bike, and a cable cross weight trainer.

BOMA DINNERS

Experience a memorable evening under the African night sky at our traditional boma. Enjoy fine cuisine and wines while sitting beside a warm, crackling fire. It's the perfect chance to reminisce, share stories, and discuss the day's sightings and experiences.

End your evening with a sumptuous dessert and a nightcap before bidding farewell to the glowing fire as you return to your suite.

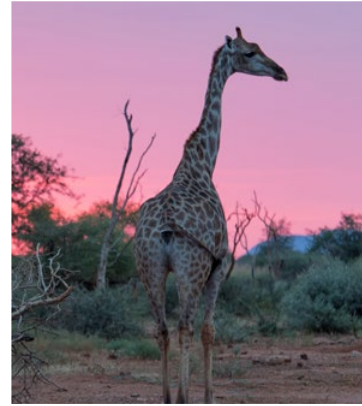
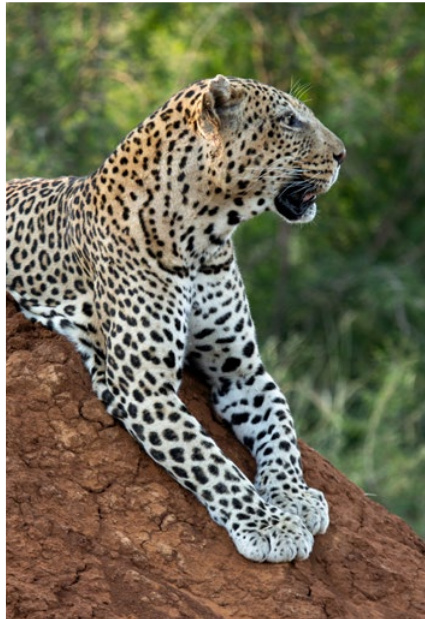
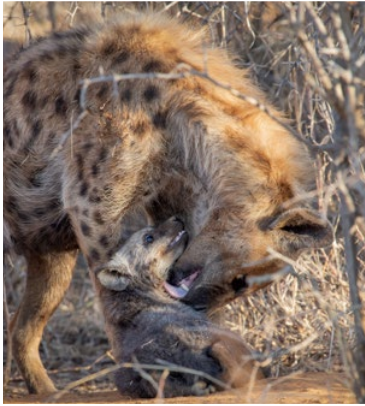
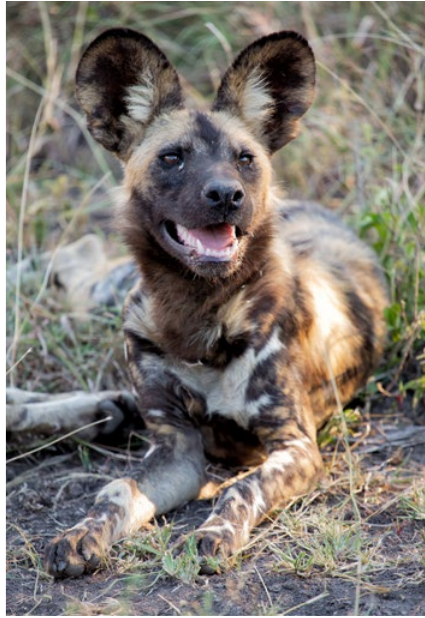


MORNING & AFTERNOON GAME DRIVES

Africa's big game thrives in the Madikwe Game Reserve. Each day offers a new adventure as you explore the captivating wildlife of Africa in an open, state-of-the-art Land Cruiser, complete with a roof for sun protection during the summer months. Whether you encounter a leopard on the hunt, hear lions roaring at twilight, observe dung beetles in action, or watch birds building their nests, an incredible experience awaits you!

Tuningi's highly qualified game rangers excel in igniting guests' passion for the environment and wildlife. They provide a unique opportunity for those eager to learn about various aspects of wildlife and bush etiquette.

- Two game drives daily.
- Big 5 game viewing (Lion, Elephant, Rhino, Leopard, Buffalo).
- State-of-the-art Land Cruisers.
- Passionate, qualified Game Rangers.
- Tea, filter coffee and biscuits on morning game drive.
- Drinks and canapés on afternoon game drive.





WEDDINGS

At Tuningi, your wedding ceremony will blend African chic with grace and charm. Upon your arrival, we will treat you and your guests to a traditional bush dinner under the stars in the heart of the reserve.

On the wedding day, you'll start with a leisurely brunch on the lodge deck, allowing everyone time to relax before the main event. The ceremony will be held on a 'koppie' (hill) that overlooks the northern part of the Madikwe Game Reserve.

With meticulous attention to detail, our team at Tuningi ensures a stylish yet relaxed and welcoming atmosphere for your exclusive bush wedding.

THIS PACKAGE INCLUDES

- Game drives day before & after the wedding for all guests that are accommodated at the lodge.
- Bush dinner the night before the wedding for all the guests.
- Wedding ceremony in the bush on a hilltop.
- A welcome drink and snack in the Tuningi boma, overlooking the waterhole, during the bridal couple's photoshoot.
- Wedding reception and dinner in the Main Lodge.
- Single layer wedding cake with topping of your choice.
- Singing and dancing of Lodge choir.
- Special wedding turndown for the bridal couple including a bottle of South African sparkling wine.
- Wedding gift for the bridal couple, courtesy of Tuningi.
- Full body massage for bride and groom.
- Witnesses at the ceremony (lodge staff).
- Pressing of bride and groom garments.

THIS PACKAGE EXCLUDES (To be quoted on request)

- PREPARATION AND PROCESSING OF ALL LEGAL DOCUMENTS.
- The Minister, his/her travel and.
- Photographer, hairdresser, make-up artist and additional beauty treatments.
- Accommodation.
- Cellar Wines & Premium Spirits.
- Flowers of your choice.

LEGALITY OF FOREIGN WEDDINGS IN SOUTH AFRICA

The law in South Africa requires a foreign couple to attend an appointment at the Department of Home Affairs before they can be legally married in South Africa. Since this is quite a cumbersome task for someone on safari, we suggest that you process all legal marriage documents in your home country and enjoy your ceremony on safari in a more traditional way.



COMMUNITY

Tuningi has adopted a local pre-school and the Grade R class at Supingstad Primary School as part of our community project.

We utilize donations from our guests to address specific needs as they arise. This year, we have provided new tables and chairs for the Grade R classrooms and are in the process of purchasing essential educational materials, such as coloring books, learn-to-write books, scissors for basic skills development, and clay for molding, among others.



AT A GLANCE

RATES ARE QUOTED

- Inclusive of VAT
- In South African Rands
- Subject to availability

RATES CHANGES

All tariffs quoted are subject to change, without prior notice. However, rates quoted for confirmed bookings will be honoured.

RATES INCLUDE

- Luxury accommodation
- Three meals daily
- A wide selection of local beverages, house wines & spirits (Non-premium beverages only: local beers & spirits, soft drinks, and house wines)
- Tea / Coffee
- Two game drives per day
- Children's program

RATES EXCLUDE

- Transfers
- Airport departure taxes
- Cellar Wines & Premium Spirits
- Telephone calls
- Curio shop purchases
- Gratuities
- Additional activities
- Wellness treatments
- Laundry
- Park entry and conservation fees listed below (subject to change):
DRIVE IN: Park entry fee to the reserve of R200 per adult and R100 per child 0 – 8 years
FLY IN: Airstrip landing fee of R280 per adult and R180 per child 0 – 8 years

CONSERVATION FEE: Charged per day

VALID from 01/10/2023	ADULT	CHILD (0-8)
International Guests	R450	R225
SADC Guests	R225	R115

- Western Airstrip to lodge transfers are complimentary. During bad weather when planes have to land at the Eastern Airstrip there will be a R250 lodge transfer charge per vehicle, one way.

PROVISIONAL RESERVATIONS

All provisional reservations will be automatically released if not confirmed within 2 weeks of booking made.

PAYMENT

A deposit of 20% of the total accommodation charge is required to confirm a provisional reservation and full payment is required 45 days prior to arrival. Ideally bookings should be settled via EFT. Deposit conditions may be waived for bookings from the trade, tour operator and agents at the Lodge's discretion. Extras may be settled in camp. We accept all credit cards. We do not accept travellers cheques.

Peak Season Terms and Conditions:

20 December until 5 January. All Bookings over Christmas and New Year's Eve can only be secured once a 25% non-refundable deposit has been paid.

Group Reservations:

Should the reservations department require the accommodation that is being held by the group for the same dates, we will request the group to supply us with an immediate 20% non-refundable deposit. A booking of 8 guests or more is classed as a group booking.

CANCELLATION POLICY

- 45–31 days – 50% of full amount
- 30–15 days – 75% of full amount
- 4 days or less – 100% of full amount

Bookings are not transferable

CHILDREN

- Children of over the age of 6 are welcome.
- Children ages 6-12 years can share a room with their parents.
- Adding and additional child to the Family Suite will be subject to availability based on occupancy (please contact Reservations).



WHAT TO TAKE

- Comfortable walking shoes
- Sun hat
- Sunglasses
- Sun block
- Cameras and binoculars
- Light, neutral-coloured clothing
- Swimming costume
- Warm jackets are essential in winter (May - Oct)

DRONES

Drones are strictly prohibited in the Game Reserves, failure to comply with this rule will result in a heavy fine or arrest by reserve management.

ARRIVAL/DEPARTURE

- Guests may arrive any time from 14h00.
- Rooms are to be vacated by 11h00.

HOW TO GET TO THERE

- Self-drive (4½ hours from Johannesburg).
- Helicopter transfer directly into Tuningi.
- Fly Fed-Air daily to the reserve.
- Flight transfer or private charter directly into Madikwe airstrip.
- Road transfers available from any airport to the lodge.

AIR TRANSFERS:

BY FED AIR – Please note we require a 25% deposit in order to secure a ground or air transfer.

BY PRIVATE AIRCRAFT: MADIKWE WESTERN AIRSTRIP

Co-Ordinates S -24 49' 4"; E 026 13' 4"
 Length 1400 meters
 Elevation 3800
 Heading 08/26
 Surface Gravel

TUNINGI HELIPAD

Co-Ordinates S -24 46' 62"; E 026 12' 67"

BANKING DETAILS

Account Name Tuningi Safari Lodge

Bank ABSA Bank

Branch Code 331155

Account Number 4058 1260 12

Type of Account Cheque

VAT Number 4370207765

CONTACT DETAILS

RESERVATIONS

Telephone +27(0) 11 781 5384

Mobile +27(0) 72 880 2646

for any WhatsApp enquiries

E-mail reservations@tuningi.co.za

Address P O Box 324, Randburg, 2125

CENTRAL RESERVATIONS

Telephone +27 (0)66 022 7234

E-mail lodgereservations@seasonsinafrica.com

LODGE

Manager Heidi Tonkinson

Telephone +27(0)82 894 0960

E-mail lodge@tuningi.co.za

Website www.tuningi.com

Facebook Tuningi Safari Lodge



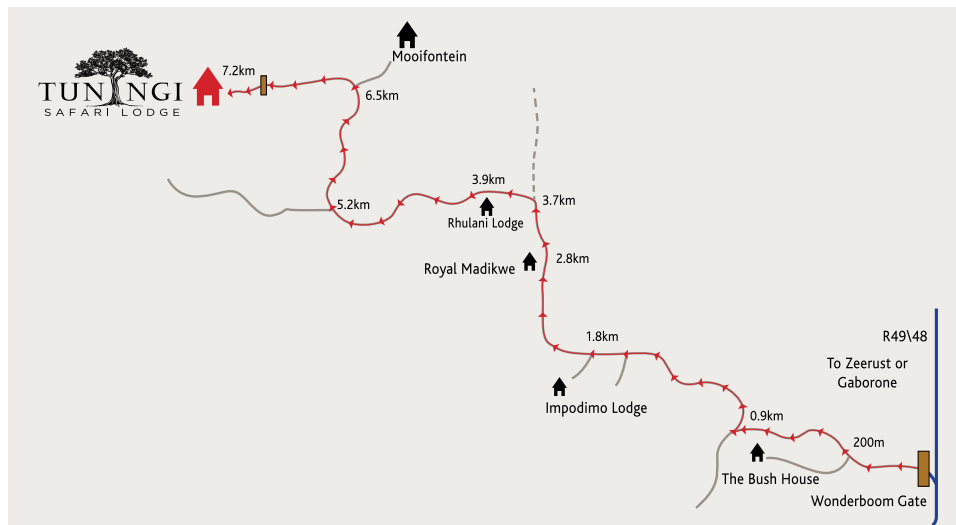
FROM OR TAMBO INTERNATIONAL AIRPORT TO TUNINGI SAFARI LODGE

- From ORT International get on the **R21** towards Pretoria up to the Exit to the **N1 POLOKWANE** (about 37km).
- Get onto the **N1** towards Polokwane and continue up to the **N4** Rustenburg slipway (about 22km). Take the slipway onto the **N4** towards Rustenburg (this is just after the Zambezi drive offramp). At Rustenburg continue on the **N4** through Swartruggens towards Zeerust. Please note that The **N4** is a toll road with four toll gates to Zeerust. Three before Rustenburg and one just after Swartruggens.
- Once in Zeerust turn right at the four way stop street into President Street. There is a signpost on the left that says **MADIKWE GAME RESERVE/ GABORONE** and an ABSA Bank on the corner on your left.
- Follow the **R49** towards the reserve for approximately 97km.
- The first entrance to the reserve is **ABJATERSKOP GATE**.
- Pass that gate and enter at the next gate – **WONDERBOOM GATE** exactly 7km from the first gate.
- Once you have entered the **WONDERBOOM GATE** follow the 'LODGES' sign posts to Tuningi for another 7.2 km. This is indicated with red arrows on the map below.
- It should take you between 15 and 20 minutes to get to the lodge from the Wonderboom Gate.

FROM GABORONE TO TUNINGI SAFARI LODGE

The estimated driving time is 1 to 1½ hours.

- From Gaborone take **TLOKWENG ROAD** towards the **TLOKWENG/ KOPFONTEIN BORDER POST**.
- After passing through the border post continue along the **R49** for approximately 10km, the **WONDERBOOM GATE** (thatched roof building) will be situated on your left hand side.
- Once inside Madikwe follow the sign that states **LODGES** and signs that state **TUNINGI SAFARI LODGE**.
- It should take you between 15 and 20 minutes to get to the lodge from the Wonderboom Gate.



WHEN YOU REACH THE ENTRANCE GATE TO THE LODGE, PLEASE PRESS THE GREEN BUTTON ON THE TREE STUMP ON YOUR RIGHT HAND SIDE! PLEASE DO NOT LEAVE YOUR VEHICLE! THE GATE WILL AUTOMATICALLY CLOSE BEHIND YOU ONCE YOU HAVE ENTERED.