



&BEYOND

DISCOVER PHINDA PRIVATE GAME RESERVE

&Beyond Phinda Homestead

Tucked into the edge of a dappled forest lies a gracious sole-use safari villa, complete with a dedicated ranger, tracker, butler and chef.



DISCOVER 8BEYOND PHINDA PRIVATE GAME RESERVE

Phinda Homestead

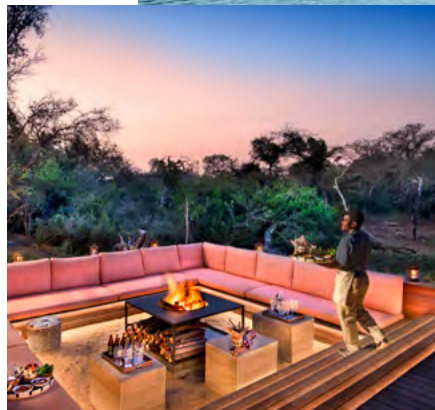
Why stay?

1 EXCLUSIVE PRIVATE VILLA
Equipped with your own dedicated ranger, tracker, butler, chef and safari host, Phinda Homestead offers the ideal home-away-from-home. Game drive times, as well as meals, are tailored completely to your preferences to create a fully personalised safari.

2 PRIVATE CONCESSION
29 866 hectares (73 800 acres) of private traversing across seven distinct habitats allows for a great diversity of landscapes and exclusive game viewing. Limited number of vehicles at sightings and sensitive off-roading practices affords close-up sightings of Big Five and other rare and iconic wildlife.

3 BIG FIVE WILDLIFE SIGHTINGS
Phinda is home to a magnificent variety of wildlife, including the Big Five, but is best known for its large population of cheetah and black rhino. The sand forest is home to the shy suni and the rare red duiker, two tiny antelope that are seldom encountered elsewhere.

4 LIFE-CHANGING EXPERIENCES
A variety of incredible adventures are available, including twice-daily game drives, nature walks, conservation and community experiences, sleepouts, village visits, night drives, specialist safaris, as well as nearby ocean activities.



A wonderful luxurious experience we're so happy to have chosen. An amazing guide and butler, delicious food, not to mention the many, many animals we've seen, a trip of a lifetime. ”

DISCOVER &BEYOND PHINDA PRIVATE GAME RESERVE
Phinda Homestead

Lodge amenities



1

BOMA

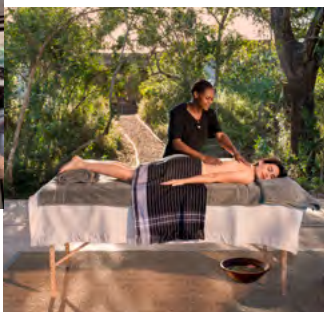
After your evening game drive, enjoy a pan-African al fresco dinner under the stars and around the open blazing fire in the lodge's traditional boma.



2

INTERACTIVE KITCHEN

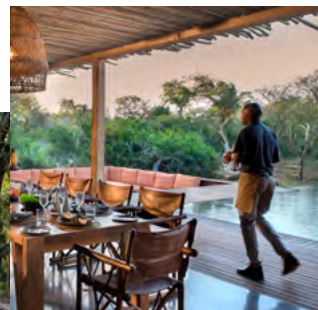
An interactive kitchen brings the lodge's private chef into the centre of the guest experience with beautiful home cooked meals prepared in front of your eyes.



3

PRIVATE GYM & MASSAGE SALA

Between game drives, guests can enjoy a good training session in the gym equipped with treadmill, yoga mats, exercise ball and static weights; or unwind with a relaxing Healing Earth treatment in the massage sala.



4

PRIVATE SERVICE

In addition to a private safari, this private contemporary farmhouse also boasts a dedicated butler, chef and safari host to be at the beck and call of guests at all hours.



5

PRIVATE SAFARI

This much-loved lodge comes with a dedicated ranger and tracker team, as well as a private safari vehicle. Game drive times, as well as meals, are tailored completely to your preference to create a fully personalised safari.

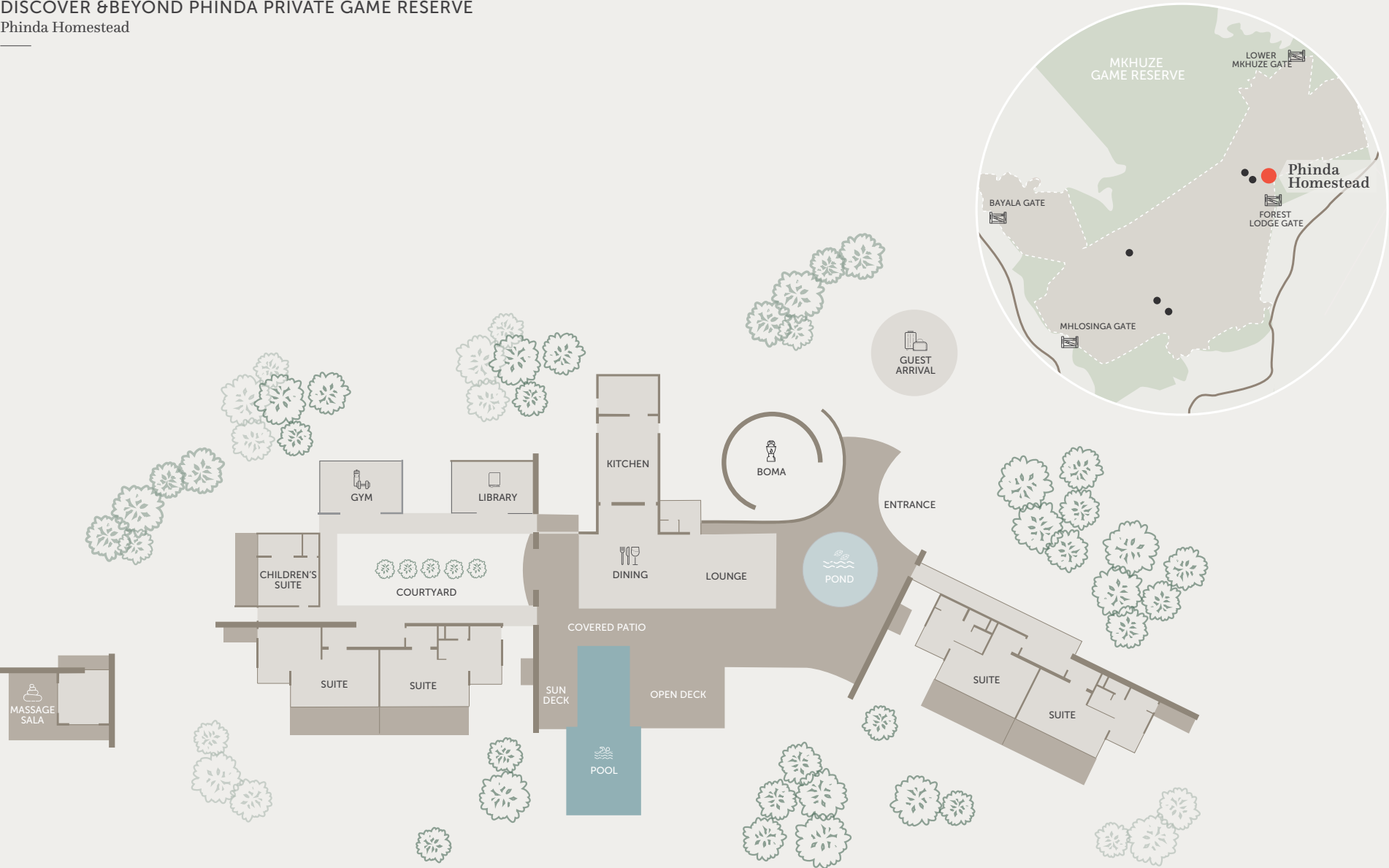


6

SWIMMING POOL

The large expansive swimming pool opens up on a small wetland that allows for magnificent wildlife passing by and where daily sightings of elephants are common place as they come to drink from the water of the rim-flow pool.

DISCOVER &BEYOND PHINDA PRIVATE GAME RESERVE
Phinda Homestead



DISCOVER &BEYOND PHINDA PRIVATE GAME RESERVE
Phinda Homestead

Lodge overview

LODGE

Maximum number of guests	10 guests maximum (8 adults and 2 children) - additional vehicle rates apply for more than 8 guests
Number of rooms	4 ensuite rooms included in villa rate 1 child room available at an additional cost
Family accommodation	Additional child room available that sleeps 2 - 2 single beds, available at an additional cost
WILDchild programme	Yes
Pilot / Guide accommodation	No, a room can be booked at Forest Lodge
Distance between rooms	2 rooms are separated from the other 2 rooms by approx. 40 m (120 ft)
Check-in / Check-out times	14h00 / 11h00

DINING

Food / Dietary options	Kosher and halaal available at an additional cost and with at least 4 weeks notice
Private butler service	Yes
Plated service	Yes
Private dining	Yes

PAYMENT TYPES ACCEPTED

Credit cards accepted	Visa, Diners, Amex, and Mastercard
Currency	All major currencies accepted

FACILITIES

Power	220v AC
Internet access	Yes, Wi-Fi in all rooms and guest areas
Wine store or cellar	Yes
Boma	Yes
Bar	Yes
Interactive kitchen	Yes
Swimming pool	Yes
Wellness offering	Healing Earth treatments offered in-room or in the massage sala
Fitness centre	Well equipped gym
Conference facilities	No
Weddings and blessings	Yes
Wheelchair accessibility	Yes, with assistance
Complimentary laundry service	Yes
&Beyond Safari Shop	No, but guests can visit the Safari Shop at Forest Lodge

OTHER

Vehicle type	9 seater vehicle (Max. 8 guests per vehicle)
Private 4x4 safari vehicle	Yes, depending on availability and at additional cost
Private photographic vehicle	Yes, depending on availability and at additional cost

DISCOVER &BEYOND PHINDA PRIVATE GAME RESERVE
Phinda Homestead

Inclusions

RATE INCLUDES

Accommodation for 8 guests	✓
Private vehicle and guide for 8 guests	✓
Three meals daily	✓
Soft drinks, house wines, local brand spirits and beers, teas and coffees and refreshments on game drives	✓
Laundry	✓
Twice-daily game drives	✓
One hour nature walks accompanied by experienced armed trackers (subject to availability)	✓
Emergency medical evacuation insurance	✓
VAT	✓
Transfers to and from the lodge airstrip	✓
One complimentary pair of SWAROVSKI OPTIK CL Companion 8x30 binoculars per suite to share during your stay	✓

RATE EXCLUDES

Additional room cost for more than 8 people, as well as additional vehicle if required (Max. 8 guests per vehicle)	✗
Administration fee	✗
Telephone calls	✗
Safari Shop purchases	✗
Gratuities	✗
All items of a personal nature	✗
Champagne, cognacs, fine wines, premium brand spirits and cigars	✗
Government bed levy	✗
Conservancy or park fees	✗
Landing fees	✗
Additional private vehicles (Available at an additional cost)	✗
Photographic vehicle - available at an additional cost	✗
Additional-cost activities: Sleepout Under the Stars; Specialist Walking Safaris; Black Rhino Tracking; all conservation experiences; Zulu Village Visit; Turtle Nesting Adventure; Maputaland Beach Adventure; Ocean Safari; and Scuba Safari	✗

NOTE: Unmanned Aerial Vehicles: Please be advised that the use of unmanned aerial vehicles (drones) are prohibited in the conservation areas we manage, until such time as their impact on wildlife and anti-poaching initiatives can be assessed. This rule will apply throughout Africa, as our partners in various countries and regions have adopted a similar stance.





8BEYOND

8BEYOND PHINDA HOMESTEAD

Homestead Suites



6BEYOND SOUTH AFRICA

DISCOVER 6BEYOND PHINDA PRIVATE GAME RESERVE
Phinda Homestead Accommodation

Contemporary bush farmhouse

Blending seamlessly into the natural surroundings, this elegant and homely sole-use villa, boasts four private Suites that fuse harmoniously with the cool and expansive shared spaces.



WILDLIFE SIGHTINGS FROM YOUR PRIVATE DECK



SPACIOUS LOUNGE EXUDING A TRANQUIL AMBIANCE



YOUR EXCLUSIVE SANCTUARY

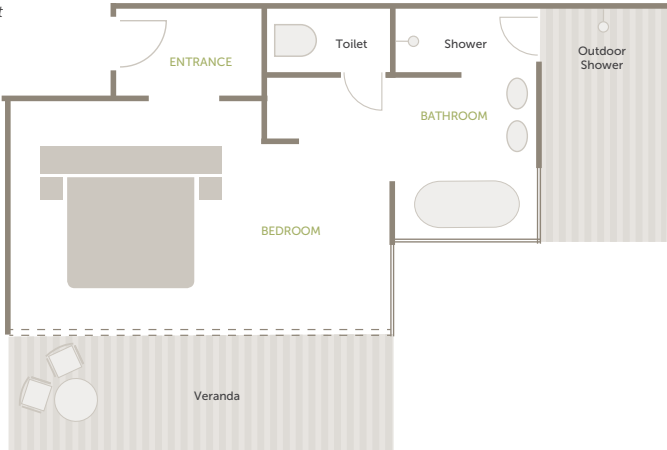
DISCOVER &BEYOND PHINDA PRIVATE GAME RESERVE
 Phinda Homestead Accommodation

SUITES

4 Suites / Max. 2 guests per Suite



Typical Suite layout



QUIRKY SUITES

The four private bedrooms, each with a double or twin option, are split in half by the expansive lounge, dining room and interactive kitchen that brings the lodge’s private chef into the centre of the guest experience. Each spacious Suite features an ensuite bath with a large bath, indoor and outdoor shower.

ROOM FACILITIES

Suite size (square meters)	55
Private veranda	Yes, with daybed
Private plunge pool	No
Personal bar	No
Personal coffee station	No
Air conditioning / heating	Yes
Overhead fans	Yes
Mosquito nets	No, sealed room
Bath	Yes
Shower	Indoor and outdoor
Seperate WC	Yes
Telephone	Yes
Hairdryer	Yes
Internet access	Yes
In-room safe	Yes
Plug type	220V AC Plug Type C, D, M, N Adapters available
Triple bed option	No
Twin bed option	Yes
Double bed option	Yes
Wheelchair accessibility	Yes, with assistance

DISCOVER &BEYOND PHINDA PRIVATE GAME RESERVE
Phinda Homestead Accommodation

CHILDREN'S SUITE

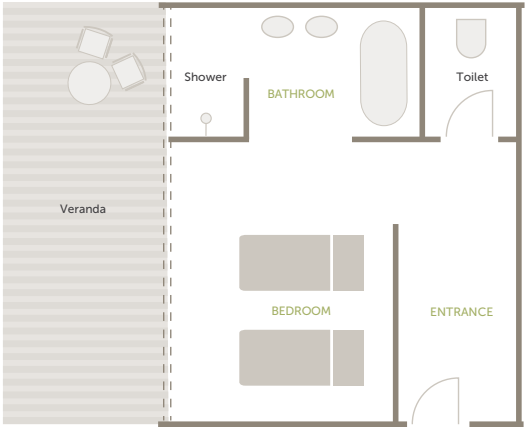
1 Suite / Max. 2 children



KID HEAVEN
An additional 5th room, equipped with with 2 single beds, is available at additional cost.

ROOM FACILITIES

Suite size (square meters)	40
Private veranda	Yes
Private plunge pool	No
Personal bar	No
Personal coffee station	No
Air conditioning / heating	Yes
Overhead fans	Yes
Mosquito nets	No, sealed room
Bath	Yes
Shower	Indoor only
Seperate WC	Yes
Telephone	Yes
Hairdryer	No
Internet access	Yes
In-room safe	No
Plug type	220V AC Plug Type C, D, M, N Adapters available
Triple bed option	No
Twin bed option	Yes
Double bed option	No
Wheelchair accessibility	Yes, with assistance



Children's Suite layout



5 BEYOND

DISCOVER PHINDA PRIVATE GAME RESERVE

Adventures of a lifetime

Enjoy an unmatched combination of bush and beach adventures with a wide array of wildlife experiences, cultural encounters, and marine explorations.

DISCOVER &BEYOND PHINDA PRIVATE GAME RESERVE

Adventures of a Lifetime

Safari experiences

An African safari is an experience of a lifetime, and there is so much on offer at &Beyond Phinda – from twice-daily Big Five game drives, to a range of private and specialist experiences.



1

SAFARI GAME DRIVES

Enjoy twice-daily game drives that set off early in the morning or late in the afternoon (continuing after nightfall), in the company of expert safari guides and local trackers who will do their best to ensure that all your wishes are met. In addition to the Big Five (lion, leopard, rhino, elephant and buffalo), each safari features an iconic set of wildlife and some of KwaZulu-Natal's endemic species.

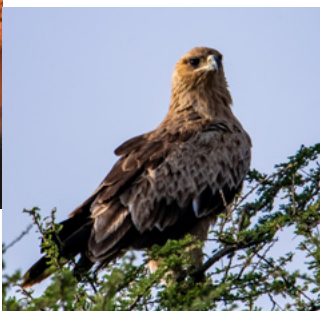
Included in the rate



2

PHOTOGRAPHIC SAFARI

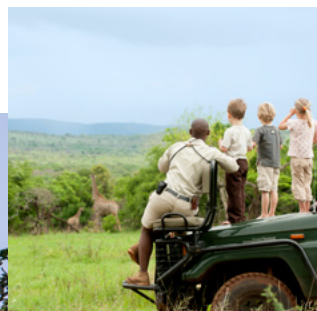
Designed for photography enthusiasts, our expert guides will use their extensive experience in wildlife, birding and landscape photography to help you get the shot of a lifetime by providing advice on shutter speed, lenses, filters, angles, lighting and so much more. Combining their understanding of animal behaviour with their photography skills, they will help you plan every step of your safari. A fully-equipped photographic safari vehicle fitted with state-of-the-art camera mounts is available and ensures exclusivity during your experience.



3

BIRDING SAFARIS

Birding safaris are just one of &Beyond's many matchless private safaris that can be personalised for any small group. Accompanied by one of &Beyond's specialist birding guides, set out in search of the nearly-436 bird species that inhabit Phinda's seven diverse habitats including some of the more well-known ones, from the Rudd's apalis to Neergard's sunbird or narina trogon.



4

FAMILY SAFARI

Phinda offers a host of entertaining activities for children aged 3–12 years, bringing alive the magic of Africa. Whilst on a family safari, you can rest assured that your children will always be safe and well cared for (both on and off game drives). Every minute is supervised by our guides and lodge staff, who provide hours of amusement and invaluable information to the children in their care.



5

PRIVATE GAME DRIVES

A private safari at &Beyond Phinda Private Game Reserve allows you to explore the reserve at your own pace while focusing on your special interests. With your own dedicated ranger and tracker team, in your own private 4x4 safari vehicle, &Beyond's exclusive safaris let you create your very own tailor-made wildlife adventure.



6

SLEEPOUT UNDER THE STARS

Enjoy a magical setting in the middle of the bush – comfortable beds with full duvets and warm blankets, twinkling lanterns hanging from the trees. Be welcomed with sundowner drinks while your guide prepares a delicious meal on the fire. Recreate the day's adventures around the fire, and fall asleep under the starry sky to the sound of hyena calling in the distance, secure in the knowledge that an armed guard will patrol the site by night.

All specialist safaris (except your included twice-daily game drives) are subject to availability of a specialist guide and tracker. All activities are weather dependent. Certain activities are subject to an additional cost.

DISCOVER &BEYOND PHINDA PRIVATE GAME RESERVE

Adventures of a Lifetime

Guided walks and cycling experiences

A guided nature walk or cycle is a magical alternative to a Big Five game drive. This adventure makes full use of all your senses, allowing you a deeper connection with the African bush.



1

NATURE WALKS

As part of a game drive, or a few hours over the middle of the day, a nature walk is an opportunity to connect with the African bush and experience it on the same level as its animal inhabitants. Watch birds, explore a dry river bed, walk in the footsteps of zebra or giraffe, sit in stillness in the shade of an ancient tree, unravel the stories behind animal tracks, or simply stretch the legs.



2

BIG GAME VIEWING WALKS

Led by an expertly-trained ranger and tracker team, a Big Game Viewing Walk offers the chance to track and view certain Big Five animals on foot. Done in such a way that the animals never know that you are there, Big Game Viewing Walks ensure an undisturbed natural experience viewing these creatures in their natural habitat while ensuring safety, as they never feel threatened by your presence.



3

SPECIALIST WALKING SAFARIS

Enjoy the excitement of a Big Game Viewing Walk, the tranquillity of a Nature Walk, or any combination of the two, as your specialist ranger and tracker tailor your experience to suit your preferences. Whether it be to follow an animal for hours or discover the unique plant species growing on the reserve, a Specialist Walking Safari offers the opportunity to experience Africa at its wildest and most personal.



4

BLACK RHINO TRACKING

Tread along the very paths black rhinos roam free on, and witness their lives from a careful distance. The slow pace of the walk and the interpretive skills of the experienced guide and tracker opens your eyes to a new and fascinating world. Learn how to follow rhino tracks, recognise rhino middens and scratching posts, and follow the signs of the bent trees and broken grass blades, searching for rhino in the company of wildlife professionals.



5

E-BIKING ADVENTURE

Cycle through the endangered sand forest on a battery power assisted e-bike that gives a boost via a throttle to make pedalling a little easier. There are four distinct routes available ranging from 5 km to 22 km (3 mi to 13 mi) to suit a range of fitness and skill levels. This adventure is guided by your ranger, and a specialist biking guide, so you can feel completely at ease. Minimum age 12 years.

The safety of our guests is paramount and only the most highly trained and qualified &Beyond guides host these walking and cycling experiences.

All specialist safaris are subject to availability of a specialist guide and tracker. All activities are weather dependent. Certain activities are subject to an additional cost.

DISCOVER &BEYOND PHINDA PRIVATE GAME RESERVE
Adventures of a Lifetime

Conservation

EXPERIENCES



1

RHINO CONSERVATION

This adventure allows guests to participate in either the capture and darting of a black or a white rhino while the veterinary team notches the sleeping animal's ear for research and security monitoring; or to assist with the painless removal of both rhino horns in order to ensure their survival and protection against poachers.



2

PANGOLIN CONSERVATION

Participate in a privately guided pangolin research and monitoring experience, and you'll be supporting the conservation of the world's most trafficked mammal. In this interpretive and exclusive activity, guests will join a researcher as they locate a pangolin, does a general health check, and downloads critical research data from the UHF tag attached to each pangolin.



3

ELEPHANT CONSERVATION

Have the opportunity to witness either an elephant collaring, where guests change of the sleeping pachyderm's radio collar, or to witness an elephant contraception, where Phinda's conservationists actively manage their burgeoning elephant population.

Cultural

EXPERIENCES



1

ZULU VILLAGE VISIT

Be invited into an authentic Zulu homestead, visit the training school of a local sangoma, or traditional healer, and shop for exquisite handicrafts in the community surrounding &Beyond Phinda. Get a glimpse into the rituals of daily life and see how tribal culture and tradition affect rural Zulu villagers in the modern world, while helping them to gain an income.



2

LOCAL COMMUNITY VISIT

Embark on an insightful experience with Wild Impact* and gain first-hand knowledge of the their various projects, aimed at improving education, healthcare and access to water, as well as the development of local businesses in the area. You will have the opportunity to visit projects in the Mduku and Mngobokazi communities, including the Khulani Special School, the Mduku Clinic, and the Mbhedula Craft Market.

DISCOVER BEYOND PHINDA PRIVATE GAME RESERVE

Adventures of a Lifetime

Ocean experiences

Adding to Phinda's wildlife charms, the marine diversity of nearby Sodwana Bay is easily accessible, with exceptional scuba diving, fishing and even turtle watching listed as some of its main attractions.



1

OCEAN SAFARI

Whilst enjoying the exceptional Big Five at Phinda, why not treat yourself to an Ocean Safari that offers a wonderful opportunity to encounter some of South Africa's beautiful marine life as well. This exciting adventure, aboard an inflatable vessel and in the company of a certified dive master, offers the prospect of encountering dolphin and snorkelling amidst flourishing reefs, plus the chance to view humpback whale (seasonal).



2

MAPUTALAND BEACH ADVENTURE

The vast sandy beaches of the Maputaland coastline provide a beautiful setting for this halfday beach outing. There is ample time for guests to soak up the sun, splash in the warm waters of the Indian Ocean, relax with a good book, play beach games such as bat and ball, take leisurely walks along the shoreline, or snorkel alongside Jesser Point (a protected marine reserve) with its diverse and colourful marine life.



3

TURTLE NESTING ADVENTURE (SEASONAL)

For four months during the southern hemisphere summer, the enormous leatherback and loggerhead turtles emerge from the Indian Ocean at Sodwana Bay to lay their precious eggs in the sand. Set out on a thrilling night-time adventure along the beach in search of these reptilian animals as they come ashore to dig their nests.



4

INDIAN OCEAN SCUBA SAFARIS

Diving the reefs of Sodwana Bay allows you to experience a portrait of marine diversity, with approximately 1 200 species of fish and spectacular coral formations. Guests wishing to participate must have dived in the last six months and have an Open Water 1 NAUI or PADI dive qualification.

DISCOVER &BEYOND PHINDA PRIVATE GAME RESERVE

Adventures of a Lifetime

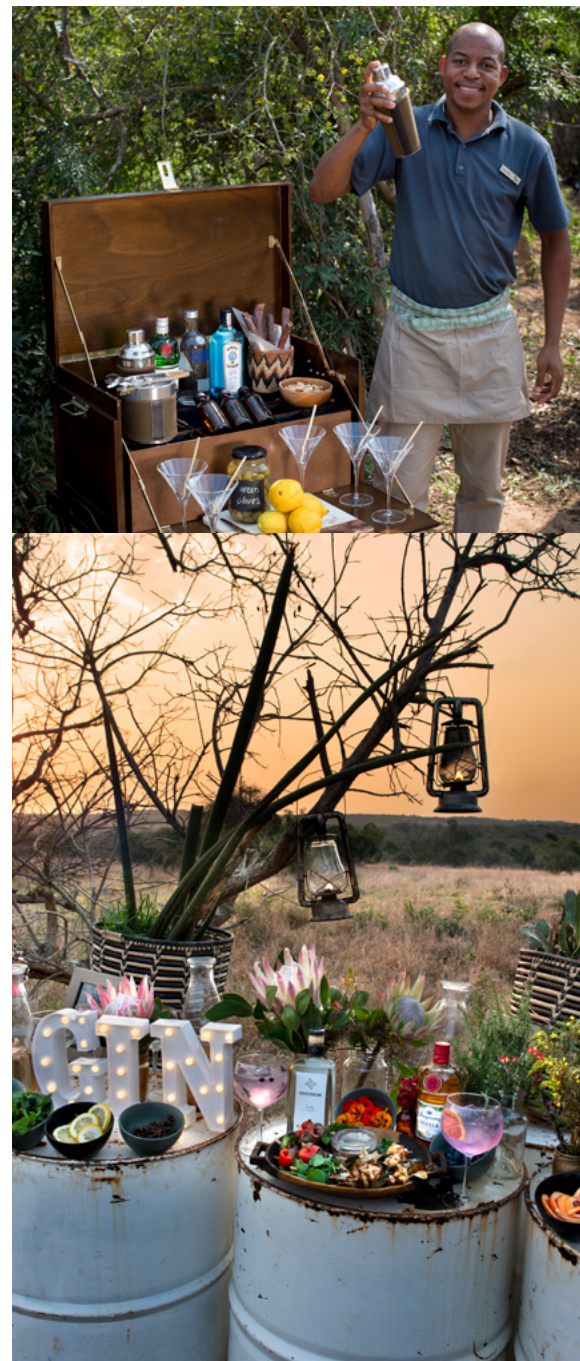
Year-round activities

- | | | |
|-------------------------------|--------------------------------------|-------------------------------------|
| ✓ Game and bird viewing | ✓ Boma dinners & bush dining* | ✓ Pangolin conservation experience* |
| ✓ Night drives | ✓ Sleepout under the stars* | ✓ Zulu village visit |
| ✓ Private game drives | ✓ Safari Shop & Ardmore gallery | ✓ Local community visit |
| ✓ E-biking* | ✓ Healing Earth wellness treatments | ✓ Maputaland beach adventure |
| ✓ Nature walks* | ✓ Weddings | ✓ Ocean safari* |
| ✓ Specialist walking safaris* | ✓ Black rhino tracking | ✓ Indian ocean scuba safaris* |
| ✓ Big game viewing walks* | ✓ Rhino notching experience* | |
| ✓ Family safaris | ✓ Rhino dehorning experience* | |
| ✓ Birding safaris | ✓ Elephant collaring experience* | |
| ✓ Photographic safaris | ✓ Elephant contraception experience* | |

**All activities are weather dependent.
Certain activities are subject to an additional cost.*

Eyes full of tears and hearts full of happiness in the best, time-honoured &Beyond traditions. Every detail meticulously planned and executed. It is impossible to exaggerate the brilliance of the experience you have given us. ”

&BEYOND GUEST



DISCOVER 6BEYOND PHINDA PRIVATE GAME RESERVE
Adventures of a Lifetime

WILDchild

6Beyond Phinda Private Game Reserve offers a range of fascinating and entertaining activities for children aged 3–12 years, bringing alive the magic of Africa. Whilst on a family safari, you can rest assured that your children will always be safe and well cared for (both on and off game drives). Every minute is supervised by our guides and lodge staff, who provide hours of amusement and invaluable information to the children in their care.

WHY WE LOVE 6BEYOND’S FAMILY SAFARIS:

- Special WILDchild programme for children aged 3–12 years
- Each WILDchild receives a backpack filled with age-appropriate goodies
- Activities are seasonal and include bark rubbing, bug collecting, frog safaris, ‘poo walks’, baking with the chef and more
- Special children’s menus available
- Childminding services available at additional cost

CHILD POLICY*

0-2 years	Permitted on game drives at ranger’s discretion. Not permitted on walks outside of the lodge.
3-11 years	Permitted on game drives. Not permitted on walks outside of the lodge.
12-16 years	Not permitted on walks outside of the lodge
16 years and above	Permitted on game drives, nature walks and Specialist Walking Safaris.

**The child policy applies to children participating on game drives when staying in a Family Suite or Family Cottage only. Private vehicles are included only at Mountain Lodge.*



DISCOVER &BEYOND PHINDA PRIVATE GAME RESERVE
Adventures of a Lifetime

A day in the life

OF AN &BEYOND GUEST

From the moment you wake up, your &Beyond experience is tailored to your interests and needs. Your butler and guide will discuss the day with you, including timings and experiences, ensuring your day is as extraordinary as the location you are visiting. Here is what to expect on an average day on safari at Phinda.

TIMING	EXPERIENCE
Early morning	Wakeup call from your guide with a steaming hot cup of coffee
Early morning	Enjoy an early morning health shot or warm drink, plus a treat, before heading out on your morning safari game drive
Early morning to mid-morning	Morning safari game drive with coffee and tea stop and snacks
Mid-morning	Tuck into breakfast at the lodge
Midday to early afternoon	Go on a guided nature walk or e-biking adventure
Early afternoon	Savour lunch at the lodge
Afternoon	Explore the reserve and surrounds on one of Phinda's exclusive adventures
Mid-afternoon	Afternoon High Tea at the lodge
Late afternoon	Afternoon safari game drive with sundowner stop and snacks
Early evening	Pre-dinner drinks and snacks in the lodge's guest area, bar or around the firepit
Evening	Dinner at the lodge
Late evening	Discover the wilderness after dark on a night safari game drive

**Timings and guest experiences are guidelines only. All experiences are subject to availability and weather dependent. Some experiences are at an additional cost.*





BEYOND

DISCOVER PHINDA PRIVATE GAME RESERVE

Our impact legacy

From our greater conservation model down to the tiniest details, every decision that we make revolves around our core ethic of Care of Land, Wildlife, and People.



DISCOVER &BEYOND PHINDA PRIVATE GAME RESERVE

Impact Initiatives

Our land & wildlife

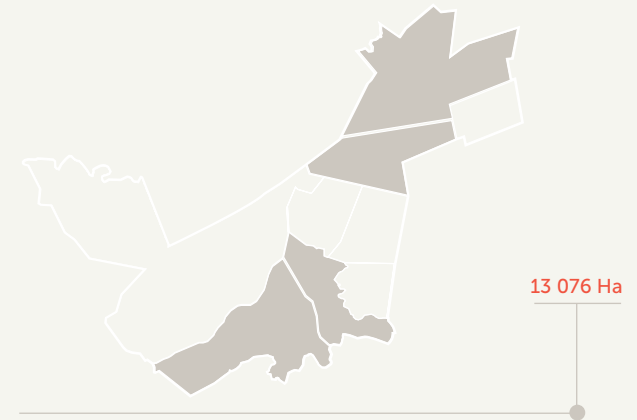
&Beyond was launched with the creation of Phinda Private Game Reserve in 1991. It was the first private game reserve in the province of KwaZulu-Natal, South Africa.

The original 13 076 hectares (32 311 acres) selected was identified as key conservation land. Wildlife had originally occurred here, but for almost a century this area had been dominated by pineapple, cattle, sisal and game farms, and was severely overgrazed and degraded. The founding vision was to rehabilitate this depleted tract of land, and reintroduce all the large mammal species that had originally lived in this region.

Care of Land, Wildlife, and People: the business model supporting this ambitious project was based on the principle that by harnessing international capital through low-impact, high-yield tourism, conservation can provide economic viability while also generating meaningful benefits for neighbouring rural communities.

Today, &Beyond Phinda is not only a flagship property boasting six globally recognised and award-winning luxury safari lodges, but it is also a proven impact case study that is widely regarded as one of the world's most far-sighted and successful blueprints for international ecotourism.

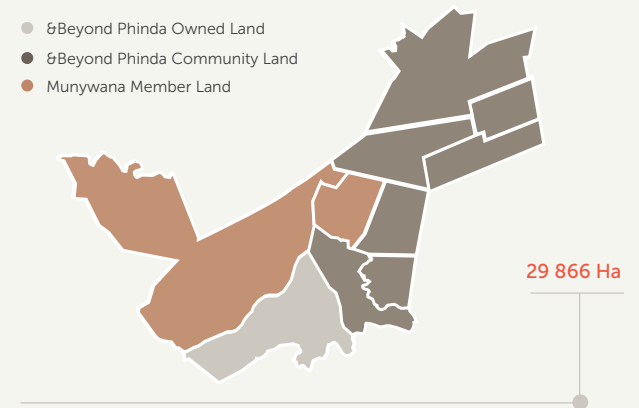
Phinda – meaning ‘the return’ in Zulu – has become the most compelling realisation of the &Beyond dream to create sustainable conservation through responsible tourism. ”



PHINDA PROPERTIES 1991

EXPANDED BIODIVERSITY

Through our relationships with the local communities and our close affiliation with the Munywana Conservancy (a collaboration of wildlife land owners in the surrounding KwaZulu-Natal region), &Beyond Phinda has grown from the original 13 076 hectares (32 311 acres) to 29 866 hectares (73 800 acres) of protected wilderness.



MUNYWANA PROPERTIES 2019

Pioneers in conservation

As wildlife was reintroduced to Phinda, it became the testing ground for many of the concepts, ideas and future working models of the company, including a number of conservation firsts.



LION

In 1992 and 1993, pioneering reintroduction methods were successfully used to mix Phinda's first 13 lion sourced from different prides. Now one of South Africa's most genetically diverse lion populations, they have supported the establishment of other reserve populations in Africa and even reversed a 15-year local extinction in Rwanda.



CHEETAH

The reintroduction of Namibian cheetah – 12 in two groups - was carefully planned to give them time to settle before lion were introduced - the first successful reintroduction of these two species into the same area. As one of Southern Africa's most important populations, they are in high demand to restock or develop new populations.



ELEPHANT

Phinda was the first private reserve to reintroduce elephant in 1991. The initial two intakes of elephant were 37 orphaned youngsters, with the first four adults arriving from Zimbabwe in 1993. 1994 marked the arrival of a group of 14 from Kruger National Park including a full breeding herd, and the birth of the first calf on Phinda.



RHINO

21 white rhino – an estimated 35 tons - were relocated in one day from a neighbouring farm in the largest translocation of its time. In 2004, Phinda was selected to start the WWF/ Ezemvelo KZN Wildlife Black Rhino Range Expansion Project and received 15 black rhino. The project's first calf was conceived and born on Phinda a year later.

DISCOVER 6BEYOND PHINDA PRIVATE GAME RESERVE

Impact Initiatives

Our communities

Alongside the restoration of the land and reintroduction of the wildlife, the Phinda story is also about care of people – the generation of meaningful community benefits through our conservation endeavours.

In those early days, our engagement with the communities was an extended, trust-building process, as their association with conservation authorities in this politically turbulent period had been largely negative. We were also fortunate to have a staff member, Walter Zulu, who was of royal lineage, to guide us through the complexities of the traditional meeting protocols.

Our undertaking was to create job opportunities, provide skills training and support community-led development projects through the establishment of the Rural Investment Fund (1992) – now Wild Impact*, our long-standing community and conservation development partner.

Perhaps this part of the Phinda story is best explained by community member, Gladys Zikhali: "The rural communities bordering Phinda were ordinary people. When Phinda started, for the most part, they did not think that changing a pineapple farm and cattle ranch into a game reserve was a good idea. They believed that there was every chance that the dangerous animals would destroy their farm stock, and perhaps even worse. They never thought that one day they could have better jobs and the opportunity for tertiary education."

LAND-RETURN TO COMMUNITY

How far have things come since those early trust-building days?

In 2007 a pioneering land claim settlement took place between Phinda and the communities of Makhasa and Mnqubokazi: 9 085 hectares (22 460 acres) of wilderness land was returned to its ancestral owners. Both communities made the decision to continue with the use of the land for wildlife and conservation rather than farming. Isaac Tembe from Wild Impact* describes this chapter in the Phinda story as "standing at the gate of a new dawn".

*Formerly Africa Foundation



DISCOVER ♾️ BEYOND PHINDA PRIVATE GAME RESERVE
Impact Initiatives

Foundational community-led projects

We believe that, in order for wildlife to thrive, local populations need to experience the benefits of participation in conservation.



MNQOBOKAZI PRIMARY SCHOOL

Situated in the Mnqobokazi Community, Wild Impact* first assisted the school in 1993 / 1994 with two classrooms. Since then another two classrooms, electricity connection and a vegetable garden with water access and fencing has been provided.



MDUKU CLINIC

Situated in the Mduku Community, the early structure was funded by Wild Impact* in 1995 together with subsequent expansions. The clinic has gone from strength to strength. Today it is a 24-hour primary health care centre, serving over 5 000 community members a year.



MACEBO CRÈCHE

Located within the Mduku Tribal Authority area, the crèche was established in 1999 in collaboration with the Non-Profit Company, Operation Jumpstart. Wild Impact* has funded the build of two classrooms, including ceilings, electrification, tiling and furniture.

DISCOVER &BEYOND PHINDA PRIVATE GAME RESERVE

Travel South Africa and beyond

South Africa has an excellent travel network that makes it easy to reach any destination, by air or by road.

GETTING TO PHINDA

Federal Air offers daily scheduled flights directly from Nelspruit to Phinda Private Game Reserve. Airlink offers daily flights from Johannesburg to Nelspruit.

Connect Phinda Private Game Reserve to Johannesburg, Cape Town, Ngala Private Game Reserve, Kirkman's Kamp, northern Sabi Sand Nature Reserve (Londolozi and Ulusaba) in South Africa or to Vilanculos in Mozambique and Livingstone in Zambia via Airlink. All flights route through either Johannesburg, Nelspruit, or Skukuza in South Africa, where layovers may vary.

Private charters from anywhere in South Africa can be arranged to Phinda Private Game Reserve's airstrip.

More cost-effective routes include a commercial flight to Richards Bay, followed by a two-hour scheduled road transfer.

It is seven-hour drive from Johannesburg on good roads in a two-wheel drive vehicle

It is a three and a half-hour drive from Durban on good roads in a two-wheel drive vehicle.



TRAVEL TIMES

JOHANNESBURG

 5hrs 18mins (466,3 km) *2hrs 10mins (45mins layover)	KRUGER NATIONAL PARK - NGALA PRIVATE GAME RESERVE			
 5hrs 22mins (452,1 km) *50mins	2hrs 4mins (89,4 km) *45mins	SABI SAND - SOUTH (SKUKUZA AIRPORT) - KIRKMAN'S AND TENGILE		
 6hrs 11mins (488,1 km) *2hrs 15mins	1hr 18mins (46,8km) *45mins	1hr 51mins (80 km) Not available	SABI SAND - NORTH	
 6hrs 35mins (533,8 km) *3hrs 25mins (1hr 25mins layover)	8hrs 48mins (657 km) *2hrs 10mins (20mins layover)	7hrs 34mins (590 km) *3hrs 20mins (50mins layover)	8hrs 40mins (636 km) *4hrs 45mins	PHINDA
 14hrs 14mins (1 397,8 km) *2hrs 10mins	19hrs 59mins (1 907 km) *3hrs 35mins	19hrs 33mins (1 849 km) *4hrs	20hrs 53mins (1 890 km) *4hrs	20hrs 31mins (1 830 km) *4hrs 35mins (45mins layover)
				CAPE TOWN

*Flights may include layovers ranging from 20 minutes to 2 hours depending on routing. Return flight times may differ for this reason.

&BEYOND LODGES

- KRUGER NATIONAL PARK**
Ngala Safari Lodge
Ngala Tented Camp
- SABI SAND NATURE RESERVE**
Kirkman's Kamp
Tengile River Lodge
- PHINDA PRIVATE GAME RESERVE**
Phinda Mountain Lodge
Phinda Forest Lodge
Phinda Rock Lodge
Phinda Vlei Lodge
Phinda Zuka Lodge
Phinda Homestead



andBEYOND



@andbeyondtravel
#seewhatliesbeyond

andBeyond.com