



& BEYOND

DISCOVER MASAI MARA

&Beyond Kichwa Tembo Tented Camp

An authentic Kenyan safari experience; contemporary camp with a family feel; the perfect gateway to experience a wildlife adventure, celebrate community and be immersed in Maasai culture.

DISCOVER MASAI MARA

&Beyond Kichwa Tembo Tented Camp

Why stay?

1 CONTEMPORARY SAFARI WITH A FAMILY FEEL

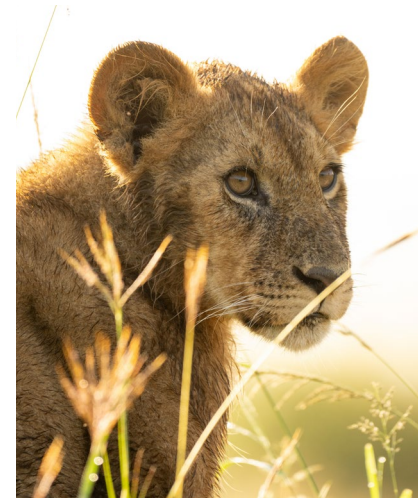
Steeped in the aura of classical safari, the camp showcases a simple yet contemporary style. Celebrating the romance and nostalgia of the Mara, this is a camp with a warm family feeling, where Kenyan hospitality abounds. The generously sized lodge swimming pool is set among the trees and surrounded by lush lawns and breathtaking views and the split-level dining area has been designed around an interactive kitchen and vegetable garden, making food an integral part of the safari experience.

2 GREAT FOR GROUPS OR COUPLES

Kichwa Tembo's selection of 40 guest tents, rim-flow lodge pool with views across the Masai Mara, spacious split-level guest area and legendary Kenyan hospitality, make it an ideal and stylish safari destination for groups, family get-togethers or more formal conference events. For couples, the team ensures they have privacy with exclusive dining location options and are able to enjoy the ambiance of the lodge or escape to their comfortable and spacious tent. Set on a secluded concession, the camp also offers seclusion and abundant wildlife. Our team is ready to tailor make any gathering if planned in advance, from menu to functions and celebrations.

3 MAGNIFICENT MASAI MARA LOCATION

&Beyond Kichwa Tembo Tented Camp is situated on the western border of the game rich, Masai Mara National Reserve, in the Mara Triangle – the most productive part of the Mara ecosystem. Meaning 'head of the elephant' in Kiswahili, &Beyond Kichwa Tembo Tented Camp sits on a concession within the Mara Triangle, leased from Maasai landlords. Lying at the base of the Oloololo Escarpment just below the area where *Out of Africa*'s most famous scene was shot, the camp overlooks the plains of the Masai Mara with game frequently viewed in front of the camp. The concession offers some of the Mara's most spectacular views, and the rare privilege of guided bush walks, an experience not permitted in the national reserve.



Great location, great views, lovely spacious "tents", friendly staff, always ready to help, delicious cuisine.

&BEYOND GUEST

DISCOVER MASAI MARA

Beyond Kichwa Tembo Tented Camp

Camp amenities



1

CAMP POOL

The generously sized lodge swimming pool is set among the trees and surrounded by lush lawns and spectacular views out across the Mara plains.



2

TUSKER BAR

Named after the legendary Kenyan beer, Tusker, this bar is the central hub of the camp. Guests meet here for tea before their afternoon drive, and drinks with their guides in the evening before dinner or a Maasai performance.



3

IN-ROOM WELLNESS

Our therapists are trained in Healing Earth products and treatments, a naturally sourced African wellness brand. Enjoy a selection of in-room treatments designed to relax and restore.



4

SAFARI SHOP

A well-stocked and sizeable Safari Shop is filled with beautiful, locally-sourced home décor items, handicrafts, and fashion items. Don't leave without authentic beaded Maasai jewellery and décor pieces, sourced from the local community of Saparingo, and local Kenyan hand-knitted toys from Kenana Knitters.

DISCOVER MASAI MARA

Beyond Kichwa Tembo Tented Camp

Camp amenities



5

INTERACTIVE KITCHEN

The spacious interactive kitchen brings a cheerful atmosphere to the lodge, allowing guests to see their mouth-watering meals being prepared, quite literally, from the lodge vegetable garden (shamba) to table.



6

VEGETABLE SHAMBA

The camp shamba, or vegetable garden, invites guests to pick fresh ingredients alongside the chefs, then watch them become vibrant meals in the interactive kitchen. Wholesome menus are shaped by the seasonal bounty of our organic garden.



7

CONFERENCE FACILITIES

We have various areas where we are able to set up conference facilities, the main area being the space above the bar area. We have a projector and Wi-Fi and interactive TV room.

&BEYOND KENYA

DISCOVER MASAI MARA

&Beyond Kichwa Tembo Tented Camp



Masai Mara NATIONAL RESERVE

&BEYOND Kichwa Tembo

- Road
- Footpaths
- ⋯ Perimeter fence
- Superior View Tents
- Superior Tents

DISCOVER MASAI MARA

Beyond Kichwa Tembo Tented Camp

Camp overview

CAMP

Maximum number of guests	68
Number of rooms	34 Tents: 26 Superior Tents and 8 Superior View Tents
Family accommodation	3 Superior Family Tents with interleading walkways
Pilot / Guide accommodation	Available
Room types	Tented Suites
Distance between rooms	6 – 10 m (20 – 33 ft)
Check-in / Check-out times	14h00 / 10h00

DINING

Food / Dietary options	Kosher not available. Halaal and other special dietary requests available: please book in advance
Private butler service	No
Plated service	Buffet and interactive kitchen
Private dining	Yes

PAYMENT TYPES ACCEPTED

Credit cards accepted	Mastercard and Visa
Currency	USD are widely used, however, notes dated prior to 2006 are not accepted

FACILITIES

Power	24-hour power
Internet access	Yes, Wi-Fi throughout
Wine store or cellar	No
Boma	Yes
Interactive kitchen	Yes
Swimming pool	Yes, lodge swimming pool (not heated)
Wellness offering	Healing Earth wellness treatments offered in-room
Fitness	Yoga mat available in-room
Conference facilities	Yes
Weddings and blessings	Can be organised on request - please speak to your travel specialist
Wheelchair accessibility	Possible with assistance in certain cases
Complimentary laundry service	Yes
Beyond Safari Shop	Yes

OTHER

Vehicle type	6-seater and 8-seater semi-open safari vehicles
Private 4x4 safari vehicle	Depending on availability and at an additional cost
Activity inclusion	Safari game drive only

DISCOVER MASAI MARA
 &Beyond Kichwa Tembo Tented Camp

Inclusions

RATE INCLUDES

Accommodation	✓
Three meals daily	✓
Soft drinks, house wines, local brand spirit and beers, teas and coffees	✓
Refreshments on safari game drives	✓
Laundry	✓
One complimentary pair of SWAROVSKI OPTIK CL Companion 8x30 binoculars per tent to share during your stay	✓
Emergency medical evacuation insurance	✓
Transfers to / from the lodge airstrip	✓
WILDchild programme (excluding goodie bag)	✓
Twice-daily safari game drives	✓
Bush walks*	✓
Maasai performance*	✓
Wild Impact community visit*	✓

*These activities may incur an additional charge for groups
 Some experiences are weather dependent

RATE EXCLUDES

Telephone calls	✗
Gratuities	✗
Personal items	✗
Safari Shop purchases	✗
Champagne, cognac, fine wines, premium brand spirits, and cigars	✗
National Reserve fees	✗
WILDchild goodie bag	✗
Hot air balloon safari	✗
Community visit to a Maasai boma	✗
Maasai dancers for private functions	✗
Healing Earth wellness treatments	✗
Weddings and blessings	✗

The service was fabulous. They have the full range of game drive experiences, social and educational activities. ”

&BEYOND GUEST



DISCOVER MASAI MARA

Beyond Kichwa Tembo Tented Camp

WILDchild

Travel to Kenya is recommended for children eight years or older. Children five years and younger cannot participate in regular game drives; children aged six to 11 can participate in regular game drives at the lodge manager's discretion. Please note that, due to the fact that the lodge is not fenced off, children are required to have an adult accompanying them at all times, as well as at the swimming pool.

WILDCHILD AT KICHWA TEMBO

Children visiting the camp can take advantage of the fun-filled and interactive WILDchild programme (available at an additional cost) where little ones can participate in the following:

- Join a Maasai bow and arrow competition
- Learn how to make a fire the traditional Maasai way
- Create a beautiful beaded artwork with the Maasai women
- Enjoy a range of traditional Maasai games
- Go on a forest walk with a guide, looking for birds and animal spoor and tracks
- Identify butterflies with a guide
- Play soccer with the camp's team

A series of unforgettable moments for the whole family which forge strong bonds between our young guests, our planet and its people.

BEYOND GUEST

CHILD POLICY*

0 - 5 years	Game drives only in a private vehicle or children's game drives (avoiding lion, leopard and elephant) outside of normal game drive time on request. No walks outside of the lodge
6 - 11 years	Game drives only at discretion of lodge manager. No walks outside of the lodge
12 - 15 years	Game drives. No walks outside of the lodge
16 years and above	All activities

**A private vehicle can be booked when staying at Beyond Kichwa Tembo that allows the drives to be tailored to suit the ages of the children (subject to availability and at an additional cost)*

CHILDMINDING

While we don't have trained childminders, we can offer the services of certain staff members who are wonderful with children. This will be at an additional cost.

Please note: The camp is not fenced off and children are required to have an adult accompanying them at all times





&BEYOND

&BEYOND KICHWA TEMBO TENTED CAMP

Accommodation

Home to 26 Superior Tents, eight Superior View Tents and three Superior Family Tents, each with a different way to wake up to the Mara.

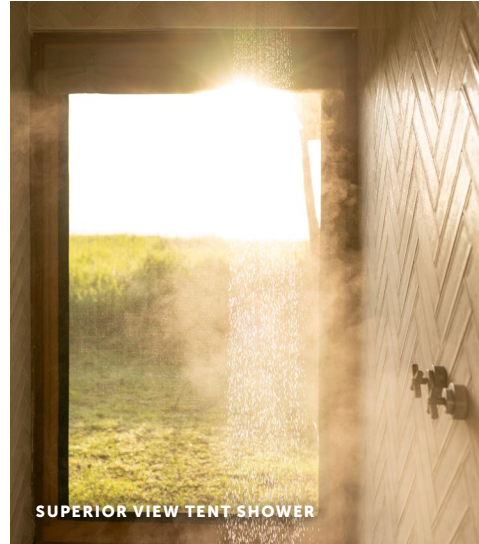


DISCOVER MASAI MARA

Beyond Kichwa Tembo Tented Camp Accommodation

Safari, shared beautifully

Combining contemporary style with classic safari charm, Kichwa Tembo offers an exceptional wildlife experience paired perfectly with warm hospitality, ideally suited to families and groups.



SUPERIOR VIEW TENT SHOWER



COFFEE IN YOUR TENT



SUPERIOR VIEW TENT INTERIOR

DISCOVER MASAI MARA

Beyond Kichwa Tembo Tented Camp Accommodation

SUPERIOR VIEW TENT

8 Tents / Max. 16 guests

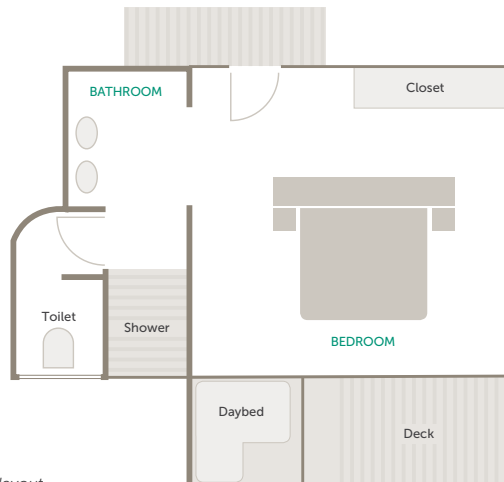


PANORAMIC MARA VIEWS

Superior View Tents offer sweeping views of the Masai Mara and surrounds. Each tent features beautiful Maasai inspired interiors that showcase a simple and contemporary use of local materials. Boasting exceptionally beautiful visions of the nearby escarpment, look forward to uninterrupted Masai Mara views that delight beyond the expected.

ROOM FACILITIES

Room size	52 m ² (560 ft ²)
Private veranda	Yes
Personal bar	No
Personal coffee station	Yes
Air conditioning / heating	No
Fans	Yes, floor fans provided
Mosquito nets	No, sealed tent
Bath	No
Shower	Indoor shower
Seperate WC	Yes
Telephone	Yes
Hairdryer	Yes
Internet access	Yes
In-room safe	Yes
Plug type	220V AC plug points in rooms Plug type: G British – BS 1363 USB port available
Triple bed option	3 (children 16 years and younger)
Twin bed option	All convertible to twin or double
Wheelchair accessibility	Possible with assistance in certain cases



Typical Superior View Tent layout

DISCOVER MASAI MARA

Beyond Kichwa Tembo Tented Camp Accommodation

SUPERIOR TENT

26 Tents / Max. 52 guests

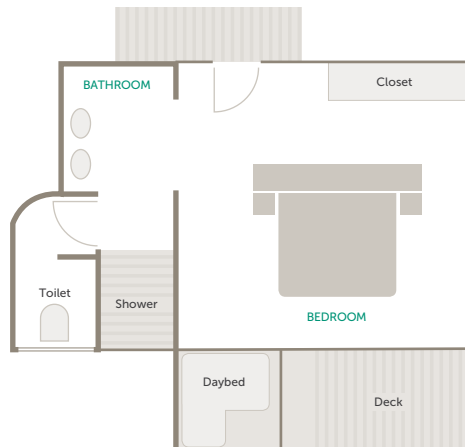


AMIDST THE TREES

The Superior Tents feature Maasai-inspired interiors, with a simple, contemporary use of local materials. Some look through the forest canopy towards the Mara, others sit deeper within the trees, ideal for bird lovers, while the rest open onto views of the nearby escarpment.

ROOM FACILITIES

Room size	52 m ² (560 ft ²)
Private veranda	Yes
Personal bar	No
Personal coffee station	Yes
Air conditioning / heating	No
Fans	Yes, floor fans provided
Mosquito nets	No, sealed tent
Bath	No
Shower	Indoor shower
Seperate WC	Yes
Telephone	Yes
Hairdryer	Yes
Internet access	Yes
In-room safe	Yes
Plug type	220V AC plug points in rooms Plug type: G British – BS 1363 USB port available
Triple bed option	3 (children 16 years and younger)
Twin bed option	All convertible to twin or double
Wheelchair accessibility	Possible with assistance in certain cases



Typical Superior Tent layout

DISCOVER MASAI MARA

Beyond Kichwa Tembo Tented Camp Accommodation

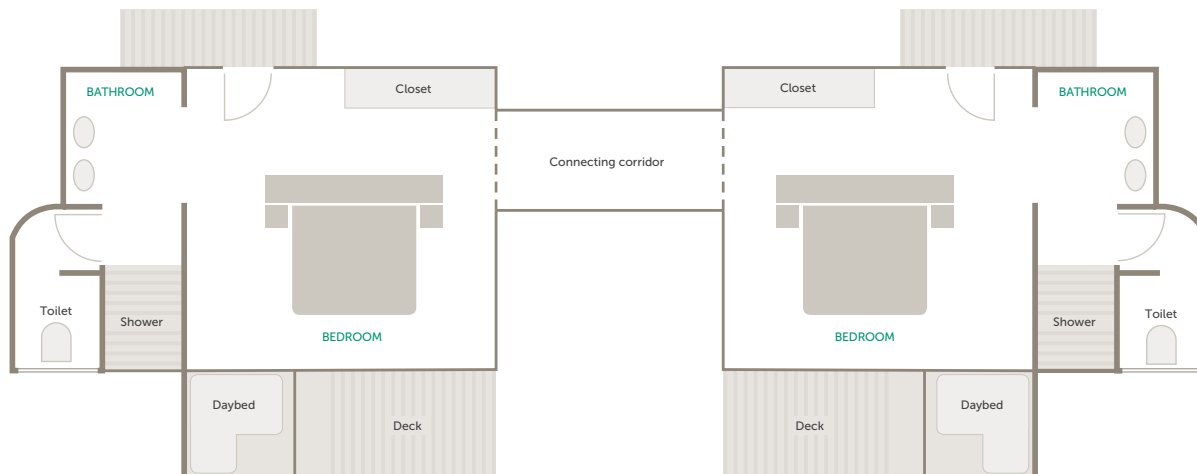
Family adventure abounds

Kichwa Tembo has three Superior Family Tents comprises two interconnected tents with an ensuite bathroom and private veranda. Each Superior Family Tent can accommodate two adults and two children (three at special request) and are ideal for families looking to spend time together experiencing the African bush in unimaginable ways.



SUPERIOR FAMILY TENTS

3 Tents / Max. 2 adults & 2 children per Family Tent (3 children on request)



Typical Superior Family Tent layout

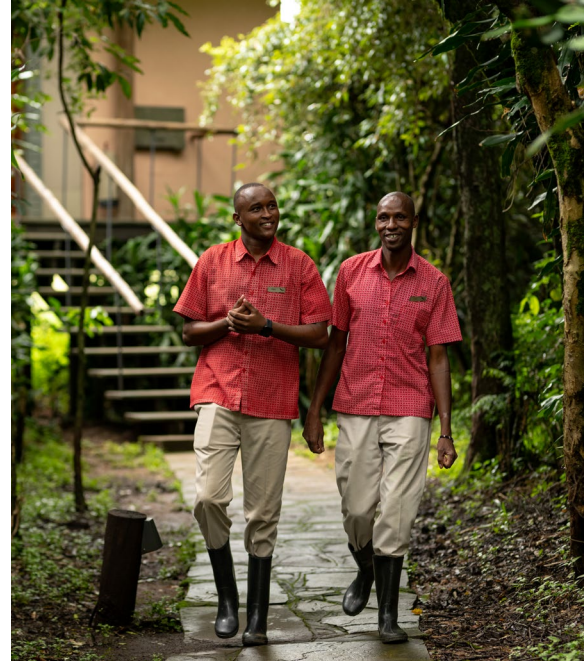


DISCOVER MASAI MARA

Beyond Kichwa Tembo Tented Camp Accommodation

ROOM FACILITIES

Room size	115 m ² (1 238 ft ²)
Private veranda	Yes
Personal bar	No
Personal coffee station	Yes
Air conditioning / heating	No
Fans	Yes, floor fans provided
Mosquito nets	No, sealed tent
Bath	No
Shower	Indoor shower
Seperate WC	Yes
Telephone	Yes
Hairdryer	Yes
Internet access	Yes
In-room safe	Yes
Plug type	220V AC plug points in rooms Plug type: G British – BS 1363 USB port available
Triple bed option	3 (children 16 years and younger) in Superior Tents only
Twin bed option	All convertible to twin or double
Interleaving walkway	Yes
Wheelchair accessibility	Possible with assistance in certain cases



SPACE TO UNWIND

Thoughtfully designed for families, with generous room to reconnect after a day of shared adventures across the Mara.



DISCOVER MASAI MARA

Beyond Kichwa Tembo Tented Camp Accommodation

Accommodation overview

	SUPERIOR VIEW TENT	SUPERIOR TENT	SUPERIOR FAMILY TENT
Room size	52 m ² (560 ft ²)	52 m ² (560 ft ²)	115 m ² (1 238 ft ²)
Private veranda	Yes	Yes	Yes
Personal bar	No	No	No
Personal coffee station	Yes	Yes	Yes
Air conditioning / heating	No	No	No
Fans	Yes, floor fans provided	Yes, floor fans provided	Yes, floor fans provided
Mosquito nets	No, sealed tent	No, sealed tent	No, sealed tent
Bath	No	No	No
Shower	Indoor shower	Indoor shower	Indoor shower
Seperate WC	Yes	Yes	Yes
Telephone	Yes	Yes	Yes
Hairdryer	Yes	Yes	Yes
Internet access	Yes	Yes	Yes
In-room safe	Yes	Yes	Yes
Plug type	220V AC plug points in rooms Plug type: G British – BS 1363 USB port available	220V AC plug points in rooms Plug type: G British – BS 1363 USB port available	220V AC plug points in rooms Plug type: G British – BS 1363 USB port available
Distance from main guest area	20 - 100 m (65 - 330 ft)	20 - 300 m (65 - 980 ft)	20 - 300 m (65 - 980 ft)
Triple bed option	3 only (children 16 years and younger)	3 only (children 16 years and younger)	3 only (children 16 years and younger)
Twin bed option	All convertible to twin or double	All convertible to twin or double	All convertible to twin or double



BEYOND

DISCOVER MASAI MARA

Adventures of a lifetime

Classic safari experiences set against a backdrop of expansive landscapes, year-round wildlife theatre, Great Migration drama and the traditional world of the Maasai that is woven into these wild spaces.

DISCOVER MASAI MARA
Adventures of a Lifetime

Experiences and highlights

Go beyond the expected in the Masai Mara with adventures of a lifetime at &Beyond Kichwa Tembo and Bateleur Camp.



1

SAFARI GAME DRIVES

Spectacular landscapes filled with an abundance of wildlife make for unforgettable game drives in the Masai Mara is the quintessential African safari experience, with customised, open vehicles where guests can expect to encounter large numbers of plains game and spectacular predator interaction year-round.



2

HOT AIR BALLOON SAFARI

Guests will have a bird's-eye view of the Masai Mara National Reserve as they take to the dawn skies on a hot air balloon safari and float soundlessly over the boundless plains. The flight is about an hour and once landed, champagne and a full English bush breakfast in true *Out of Africa* style awaits.



3

BUSH WALKS

For those guests looking for fresh and thrilling on-the-ground views, this privately-guided activity offers the perfect opportunity to discover a multitude of natural wonders: following wildlife trails, discovering the complexities of tracking and learning to interpret the signs and sounds of the bush. Courtesy-use SWAROVSKI OPTIK binoculars will be an indispensable bonus.



4

BUSH DINING

Revel in the landscapes of Africa as you savour a meal served just like African explorers of old. Enjoy an open-air breakfast or al fresco dinner. Your every whim is taken care of, and your table set up in the wilds of Africa will make for an unforgettable dining experience.



5

MAASAI VILLAGE VISIT

Immerse yourself in authentic Maasai culture with a visit to a traditional village. Witness the daily rituals of these semi-nomadic and pastoralist people and their hustle and bustle in local life. Browse through the Maasai Craft Centre and purchase artefacts made by those you have encountered. All proceeds from this go directly to the community.

OTHER ACTIVITIES

MAASAI BLESSINGS OR CELEBRATIONS

A unique and special place to celebrate significant moments in life. We welcome guests that would like to revel in weddings, blessings and engagements

COMMUNITY VISIT

A community visit provides a first-hand experience of the projects Wild Impact (formerly Africa Foundation), our long-standing community and conservation development partner, is facilitating and supporting to enable future leaders, healthy ecosystems, future foundations and thriving communities

WELLNESS TREATMENTS OVERLOOKING THE PLAINS

After a safari-filled day, indulge in a Healing Earth wellness treatment at the Bateleur Camp massage sala or in the privacy of your guest room

Activities may incur an additional charge depending on which lodge you are staying at

DISCOVER MASAI MARA

Great Wildebeest Migration

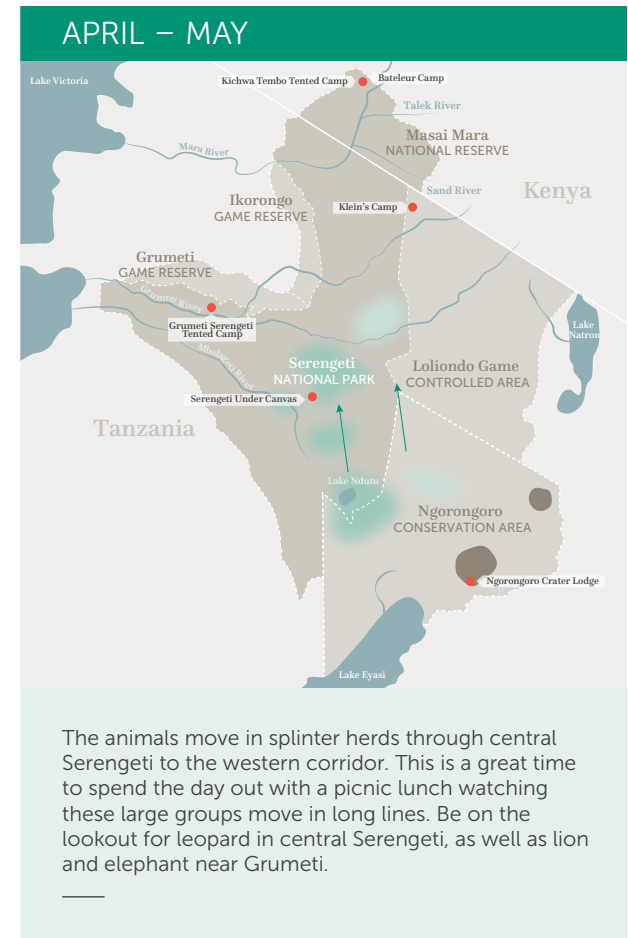
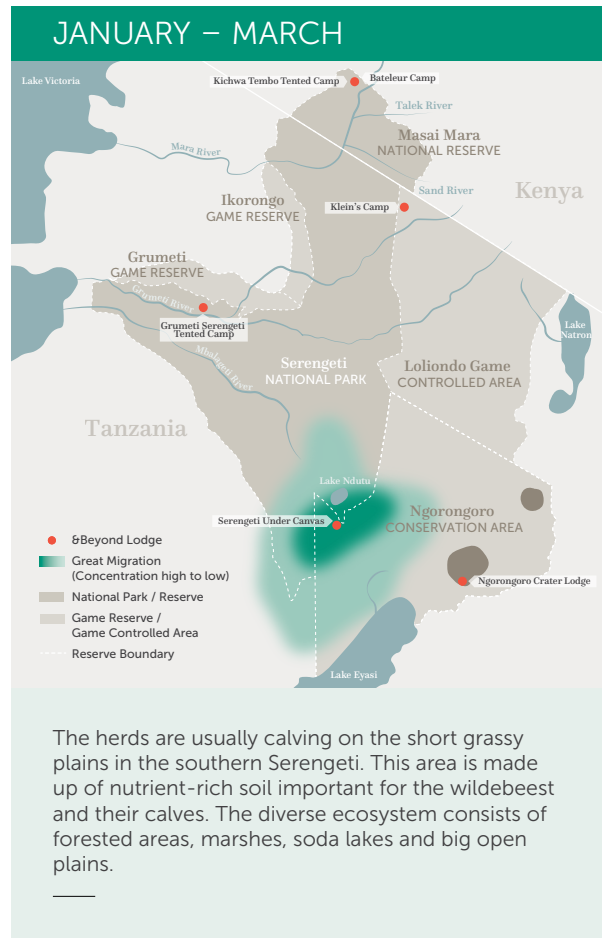
1 ONE OF THE 7 NATURAL WONDERS OF THE WORLD
 Considered the most thrilling spectacle in the animal kingdom, this epic journey migrates from Tanzania's Serengeti to Kenya's Masai Mara.

2 THE WORLD'S LARGEST OVERLAND MAMMAL MIGRATION
 The annual movement of wildebeest and other herbivores across the Serengeti-Mara ecosystem consists of more than 1.5 million wildebeest, 500 000 zebra, 200 000 Thompson's gazelle and 18 000 eland.

3 THE ANIMALS MIGRATE OVER 800 KM (500 MI)
 Due to the sheer size of the herd, the animals have to move to be able to survive. The herds generally follow the rain, as where there is rain, there is fresh grass. Once grass is depleted in one area, they will move on to a grassy area.

It's estimated 500 000 wildebeest calves are born annually. ”

The annual movement of wildebeest and other herbivores across the Serengeti-Mara ecosystem is rarely the same in terms of precise timing and direction.



(continues on next page)

Great Wildebeest Migration (cont.)

JUNE – JULY

Splinter herds usually congregate in the western corridor before moving north. Depending on the season and amount of rain, these large masses of animals can be seen from Beyond Grumeti Serengeti River Lodge, crossing the Grumeti River towards the northern Serengeti.

JULY – OCTOBER

The big herds congregate in northern Serengeti and the Masai Mara. Following the rain, the herds cross over to the Masai Mara and then often return to the Serengeti. This continues for a number of months. There are over 10 common river crossing points where this takes place.

NOVEMBER – DECEMBER

The migration herds are on the move again making their way past Grumeti or straight down to the central Serengeti. Often breaking away, they may even move south via the eastern, western and central Serengeti. The herds all move at different paces with many going through the Lobo area towards the southern plains.

A day in the life

OF A GUEST

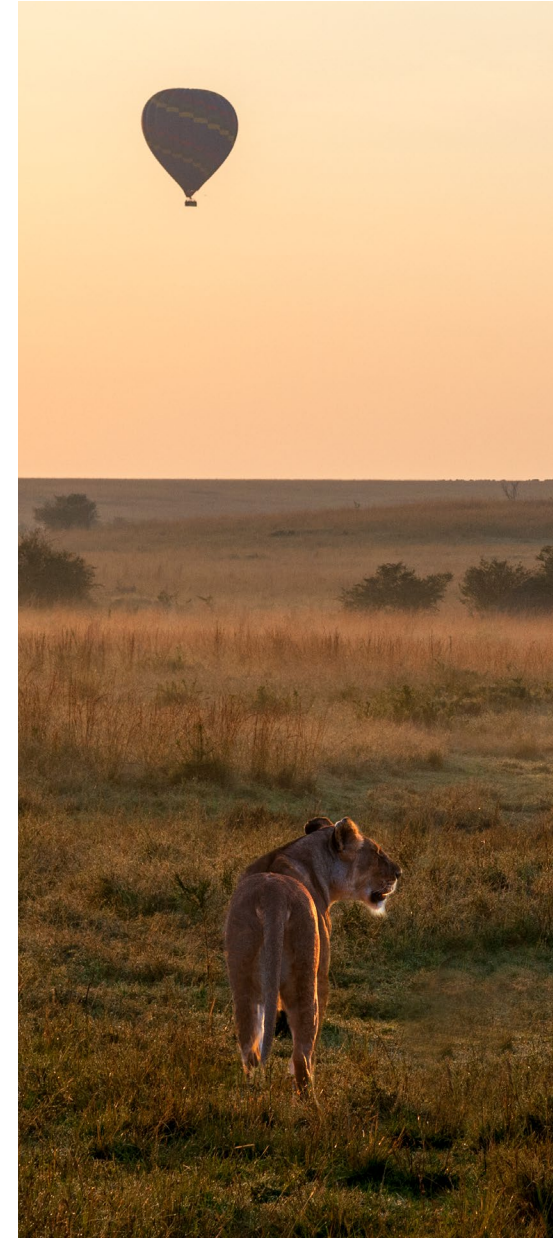
From the moment you wake up, your &Beyond experience is tailored to your interests and needs. Your butler and/or guide will discuss the day with you, including times and experiences, to ensure your day is as extraordinary as the location you are visiting. Here's what to expect on a typical day on safari in the Masai Mara National Reserve.

TIMING

EXPERIENCE

Early morning	Early wake-up call with a hot cup of tea or coffee in your tent or at the main guest area/bar
Early morning to afternoon	<p>Depending on what you'd prefer and if the Great Migration is in season and in the area, there are a few game drive options available:</p> <ul style="list-style-type: none"> Go on an early-morning game drive with a tea and coffee stop, returning to the camp for breakfast and lunch. Enjoy the rest of your day at leisure, indulging in a wellness treatment or taking part in an optional lodge activity. Savour High Tea at the camp before heading out for an optional afternoon experience and/or game drive Go on a morning game drive with either a tea and coffee stop or a pre-packed picnic bush breakfast, before returning to the camp for lunch. Enjoy the rest of your day at leisure, indulging in a wellness treatment or taking part in an optional lodge activity Savour High Tea at the camp before heading out for an optional afternoon experience and/or game drive When the Great Migration is in season and in the area, enjoy breakfast at the camp before heading out on a full-day game drive with a pre-packed picnic bush lunch. Return to the camp for dinner <p><i>Your guide will discuss your day with you the night before, confirming all available experiences beforehand. Please note, for added flexibility, a private vehicle must be booked in advanced at an additional cost</i></p>
Early morning to mid-morning (optional)	Be picked up from the camp for a balloon safari, following by a bush breakfast and shortened game drive on the way back to the camp
Optional activities	<p>Go on a local Maasai village visit or spend time with the Impact Team learning about the Nyakweri Forest and our other Wild Impact initiatives</p> <p><i>These experiences need to be selected as per your game drive schedule</i></p>
Evening	<p>Sip on your favourite pre-dinner drink of choice before enjoying dinner at the camp</p> <p><i>A Maasai dancing ceremony takes place every other night at the camp</i></p>

Timings and guest experiences are guidelines only. All experiences are subject to availability and weather dependent. Some experiences are at an additional cost.



DISCOVER MASAI MARA
Adventures of a Lifetime

Seasonal highlights

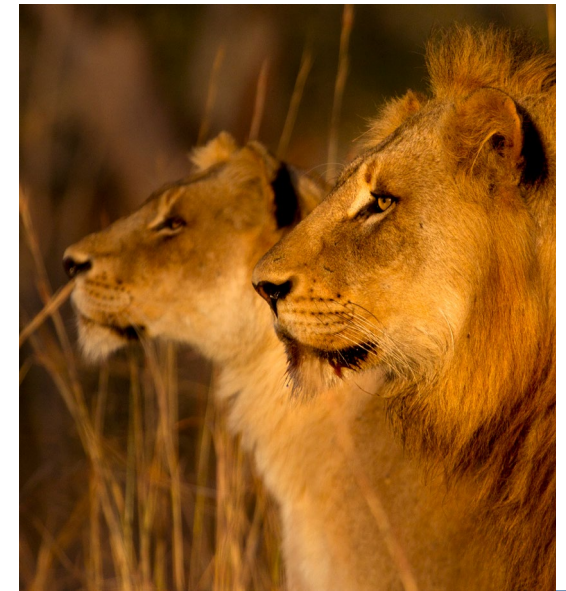
YEAR-ROUND ACTIVITIES

✓ Safari game drives	✓ Sundowners*	✓ Maasai village visit
✓ Big Five sightings	✓ Picnic in the African bush*	✓ Maasai blessing or celebrations
✓ Birdwatching	✓ Bush dining*	✓ Wild Impact community visit
✓ Bush walks*	✓ Healing Earth wellness treatment	
✓ Hot air balloon safari*	✓ Maasai performance	

*Weather dependent

TIMING IS EVERYTHING

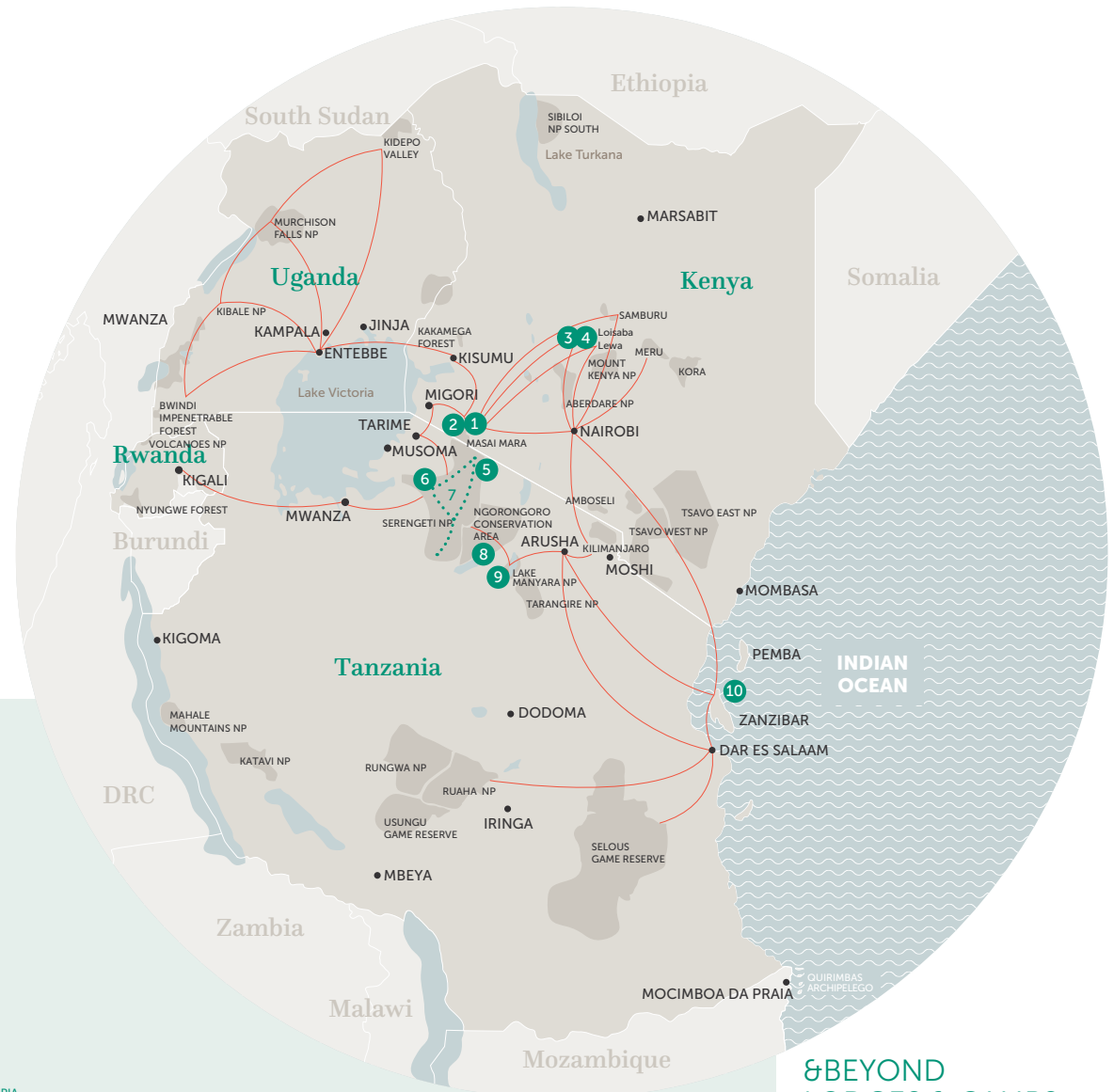
	JAN	FEB	MAR	APR	MAY	JUN	JUL	AUG	SEP	OCT	NOV	DEC
Big Five game viewing	✓	✓	✓	✓	✓	✓	✓	✓	✓	✓	✓	✓
Bush walks	✓	✓	✓	✗	✗	✓	✓	✓	✓	✓	✗	✓
To view the Great Migration crossing over the Mara River between the Masai Mara and Serengeti	✗	✗	✗	✗	✗	✗	✓	✓	✓	✓	✗	✗
Maasai boma visit	✓	✓	✓	✓	✓	✓	✓	✓	✓	✓	✓	✓
Hot air balloon safari	✓	✓	✓	✓	✓	✓	✓	✓	✓	✓	✓	✓
To enjoy a less crowded Masai Mara, with good rates in low season	✗	✗	✓	✓	✓	✗	✗	✗	✗	✗	✓	✓



DISCOVER MASAI MARA

Travel Kenya and beyond

Visiting East Africa and travelling across this vast landscape requires much thought and attention. Contact your preferred travel specialist to assist with your travel plans.



GETTING THERE

There are scheduled flights twice-daily on light aircraft from Nairobi's Wilson Airport to Kichwa Tembo's airstrip

Mombasa Air operates daily flights (approximately two hours) from Mombasa to Nairobi

Flights connect the Masai Mara to Suyian Conservancy in Laikipia via Loisaba Airstrip and/or Suyian's private airstrip

Flights connect the Masai Mara to Entebbe in Uganda via Kisumu

Flights connect the Masai Mara to the Serengeti in Tanzania and Kigali in Rwanda via the Migori / Tarime border

The Masai Mara is accessible by road from Nairobi with a 4x4 vehicle, with road transfer times dependent on traffic

TRAVEL TIMES

NAIROBI							
✈️	35mins						AMBOSELI
🚗	3hrs 45mins						
SAMBURU NP							
✈️	1hr 30mins	2hrs 35mins					
🚗	6hrs	Not advised					
LAIKIPIA							
✈️	35mins	1hr 10mins	35mins				
🚗	3hrs 30mins	Not advised	4hrs 30mins				
MERU							
✈️	55mins	2hrs 55mins	30mins	45mins			
🚗	5hrs	Not advised	3hrs 30mins	3hrs			
MASAI MARA							
✈️	1hr 15mins	3hrs 35mins	1hr 30mins	1hr 10mins	3hrs 5mins		
🚗	5hrs 30mins	Not advised	Not advised	Not advised	Not advised		
RIFT VALLEY							
✈️	30mins	3hrs 45mins	1hr 10mins	40mins	1hr 20mins	3hrs 35mins	
🚗	3hrs	35mins	7hrs	3hrs 30mins	5hrs 30mins	7hrs	
KENYAN COAST							
✈️	1hr 10mins	5hrs 30mins	5hrs	5hrs	5hrs 30mins	2hrs 35mins	5hrs
🚗	Not advised	Not advised	Not advised	Not advised	Not advised	Not advised	Not advised

&BEYOND LODGES & CAMPS

KENYA

- 1 Bateleur Camp
- 2 Kichwa Tembo Tented Camp
- 3 Suyian Lodge
- 4 Suyian Homestead

TANZANIA

- 5 Klein's Camp
- 6 Grumeti Serengeti River Lodge
- 7 Serengeti Under Canvas
- 8 Ngorongoro Crater Lodge
- 9 Lake Manyara Tree Lodge
- 10 Mnemba Island



andBEYOND



#seewhatliesbeyond

andBeyond.com