



DISCOVER

Masai Mara



Blessed with an astounding year-round concentration of wildlife and a site of the Great Wildebeest Migration, Kenya's Masai Mara National Reserve provides an unsurpassed safari experience.

Why visit the Masai Mara?

The quintessential safari destination, the Masai Mara is a land of breathtaking vistas, abundant wildlife and endless landscapes and adventures.



1

DIVERSE EXPERIENCES

The Masai Mara offers an array of adventure opportunities. Take advantage of staying on a private concession and enjoy bush walks, dinners under the stars, or a hot air balloon safari. With an abundance of wildlife and over 500 bird species, the game drives are a naturalist and photographers paradise.



2

AN ABUNDANCE OF WILDLIFE

Blessed with an astounding year-round concentration of animals, the Masai Mara National Reserve provides an unsurpassed wildlife experience. Roaming the terrain is an abundance of the Big Five, big herds of elephant and resident lion prides, as well as elusive leopard, endangered black rhino, giraffe and cheetah. The Mara River is home to large rafts of hippo and some of Africa's largest crocodiles.



3

MEET THE MAASAI PEOPLE

Traditionally a semi-nomadic tribe, the Maasai are recognised worldwide for their unique cultural dance, colourful clothing and intricate handcrafts. Seen as distinguished warriors, they still follow many traditions and rituals. This glimpse of authentic Maasai culture is a fascinating experience.



4

AMIDST THE GREAT MIGRATION

One of nature's biggest wildlife spectacles, the wildebeest migration passes through the Masai Mara from July to October. Watch in awe as the migration criss-cross back and forth across the Mara River in the Masai Mara. Our game drives are carefully planned to anticipate the progress of the Great Migration and our guides make every effort to explain the movement of the herds and get sightings of the dramatic river crossings.

Why travel with &Beyond?

1

TRAVEL WITH HEART

Our core ethos of "Care of Land, Wildlife & People" drives all that we do. When you travel with us, you make a meaningful contribution to the preservation of our world's cultures and wildlife, and leave having had an opportunity to gain first-hand experience of some of our conservation and community initiatives.

2

IN OUR HANDS

We are on call 24/7 to assist you throughout your journey. With over 2 000 &Beyonders, including guides and ground logistics teams on three continents, you will be in our hands from the moment you arrive to the moment you leave. Additionally, we offer a personal concierge service that is only a phone call away should you require any assistance at any point during your trip.

3

FINEST GUIDES

We operate three ranger training schools and are renowned for having the most highly trained, professional and knowledgeable guides, rangers, naturalists and trackers, who offer intriguing cultural insights as well as interpretive wildlife experiences.

4

TRAVEL EXPERTS

Big or small, we are all about tailoring trips around your specific interests and expectations. Our expert travel specialists are able to personalise a range of experiences for individual travellers, groups, families, wedding parties and special interest groups.

5

PERFECT MOMENTS

With journeys lovingly crafted from perfect moments, you will return from an &Beyond adventure feeling that nothing will take your breath away quite like this ever again. Our collection of signature experiences is often exclusive to &Beyond, ensuring a unique adventure.



Wow! It so far exceeded my expectations that I am speechless. Every day was a new discovery.



&BEYOND GUEST

Visiting East Africa and travelling across this vast landscape requires much thought and attention. Contact your preferred travel specialist to assist with your travel plans.

There are scheduled flights twice-daily on light aircraft from Nairobi's Wilson Airport to Kichwa Tembo's private airstrip

Mombasa Air operates daily flights (approximately two hours) from Mombasa to Nairobi

Flights connect from the Masai Mara to Entebbe via Kisumu

Flights connect from the Masai Mara to the Serengeti and Kigali via the Migori / Tarime border

The Masai Mara is accessible by road from Nairobi with 4x4 vehicle. Road transfer times dependant on traffic



</

KENYA

- 1 Bateleur Camp
- 2 Kichwa Tembo Tented Camp
- 3 Suyian Lodge

TANZANIA

- 4 Klein's Camp
- 5 Grumeti Serengeti River Lodge
- 6 Serengeti Under Canvas
- 7 Ngorongoro Crater Lodge
- 8 Lake Manyara Tree Lodge
- 9 Mnemba Island

DISCOVER MASAI MARA

Great Wildebeest Migration

1 ONE OF THE 7 NATURAL WONDERS OF THE WORLD

Considered the most thrilling spectacle in the animal kingdom, this epic journey migrates from Tanzania's Serengeti to Kenya's Masai Mara.

2 THE WORLD'S LARGEST OVERLAND MAMMAL MIGRATION

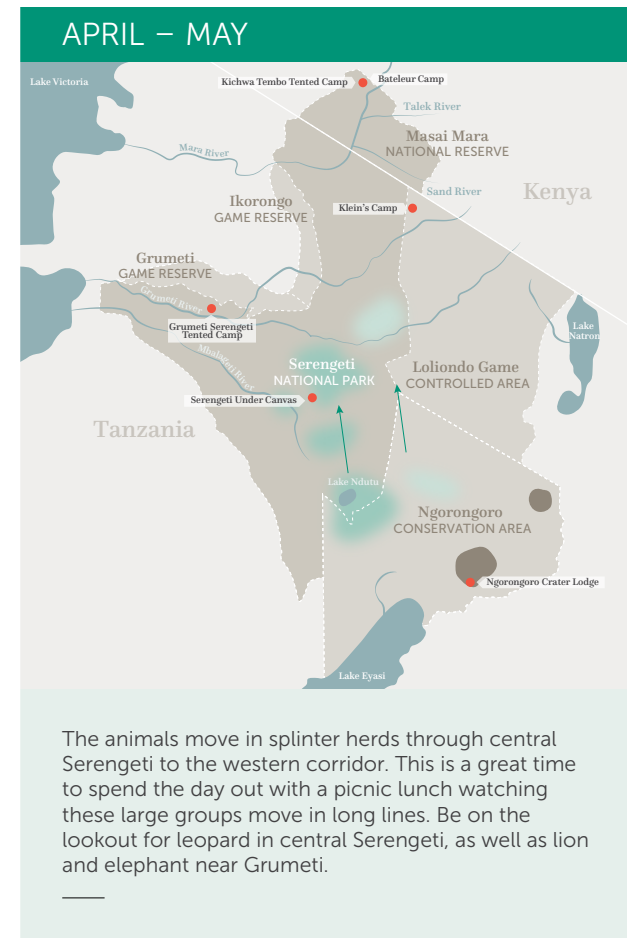
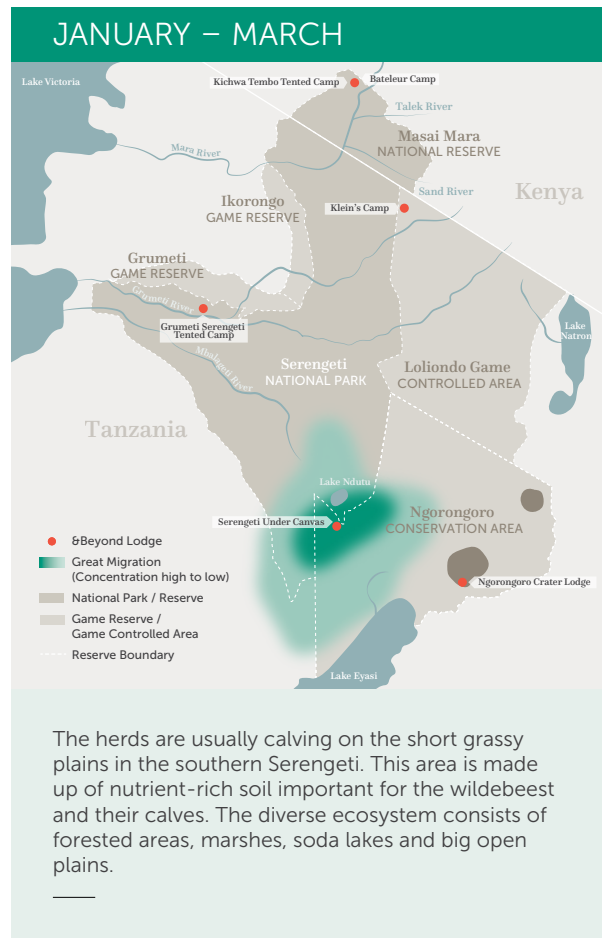
The annual movement of wildebeest and other herbivores across the Serengeti–Mara ecosystem consists of more than 1.5 million wildebeest, 500 000 zebra, 200 000 Thompson's gazelle and 18 000 eland.

3 THE ANIMALS MIGRATE OVER 800 KM (500 MI)

Due to the sheer size of the herd, the animals have to move to be able to survive. The herds generally follow the rain, as where there is rain, there is fresh grass. Once grass is depleted in one area, they will move on to a grassy area.

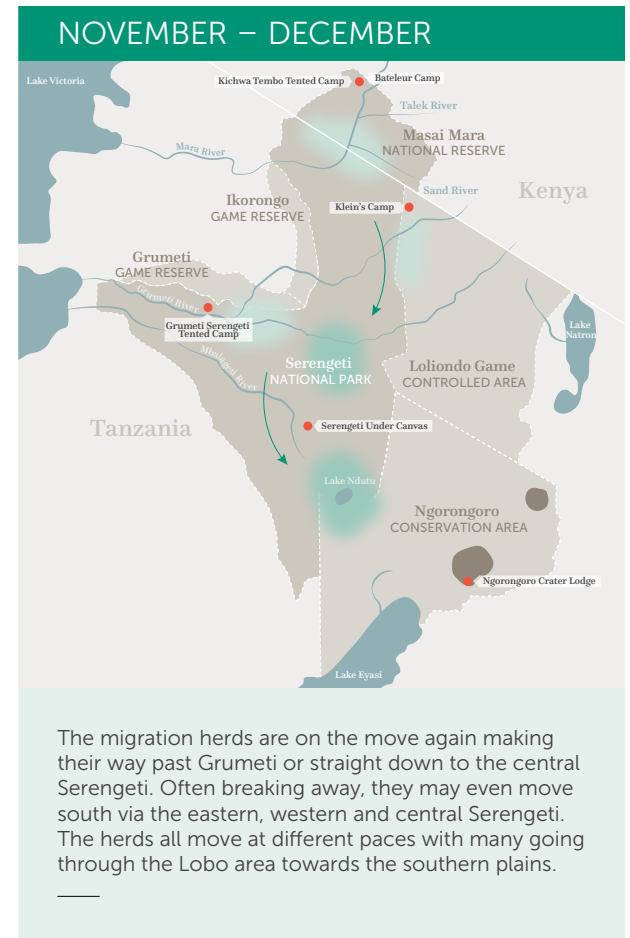
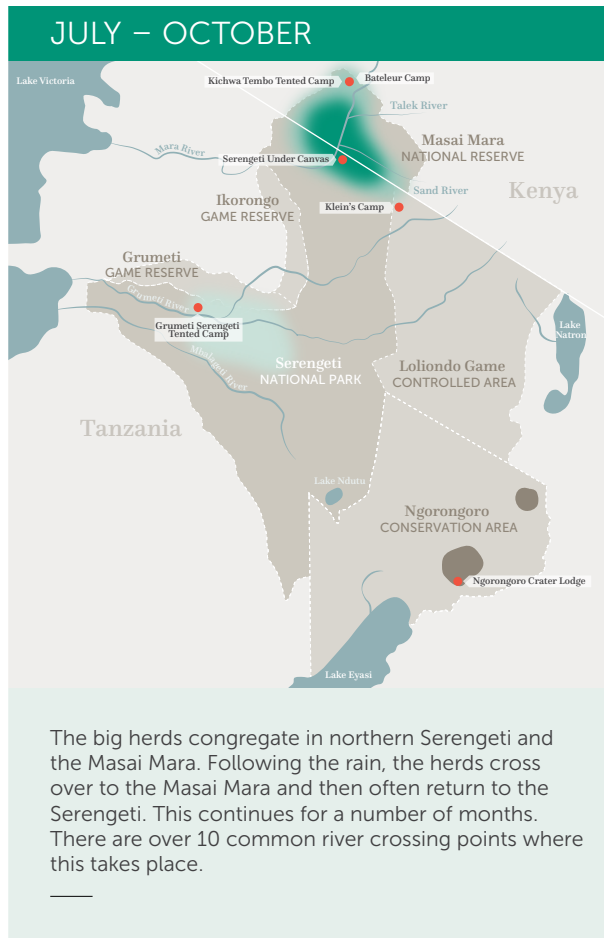
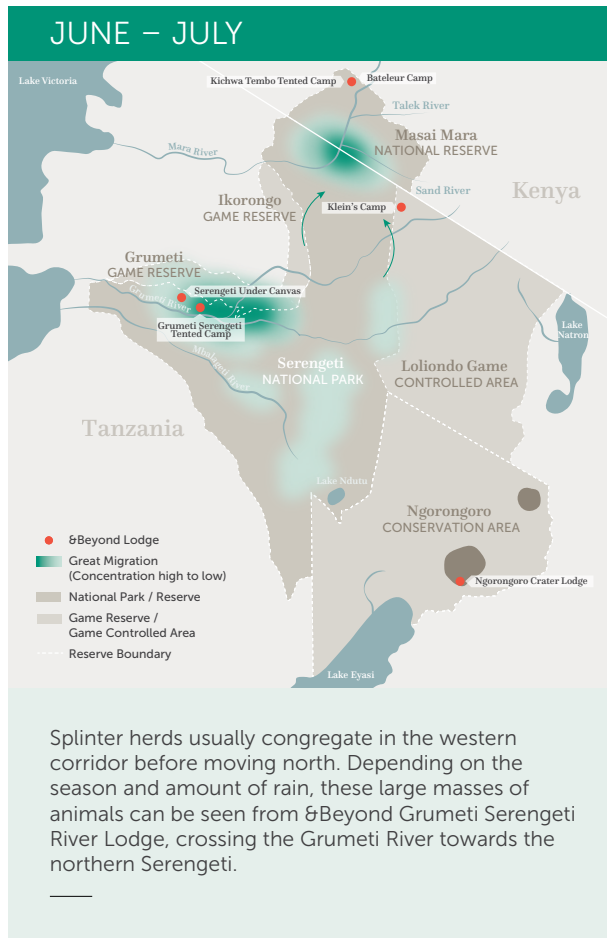
It's estimated 500 000 wildebeest calves are born annually.

The annual movement of wildebeest and other herbivores across the Serengeti-Mara ecosystem is rarely the same in terms of precise timing and direction.



(continues on next page)

Great Wildebeest Migration (cont.)



DISCOVER MASAI MARA

Explore Masai Mara

- Beyond Lodges
- River
- Murram graded road
- Graded track
- Border
- ▲ Hills
- ▭ Beyond Kichwa Tembo Concession
- ✈ Airstrip
- ⛔ Gate
- 📍 Point of interest
- 🌿 Migration river crossing
- 👁 Scenic viewpoints
- 🎈 Hot air balloon safaris
- 👣 Hike / Walk
- 🏠 Community and cultural visit
- 🧂 Salt lick

VEGETATION ZONES

- Dense woodland
- Open woodland
- Savanna
- Grassland
- Swamp



DISCOVER MASAI MARA

Regional information

&BEYOND BATELEUR CAMP & KICHWA TEMBO TENTED CAMP

Altitude	1 634 m (5 360 ft)
Malaria area	The camps are situated in a low-risk malaria area
Airstrip / Helipad	01°16'S and 35°02'E
GPS coordinates	01°14.546'S and 35°46.490'E
Best time to travel	Year-round
Weather	The Masai Mara experiences warm to hot summers from December to March and cool winters from July to September. Night-time temperatures can be cold throughout the year due to the altitude
Rainfall	Rain is generally expected from mid-March to May and again in November to early January
Temperature averages	Summer: 28°C / 80°F to 2°C / 92°F Winter: 12°C / 52°F to 24°C / 75°F

The staff took great care of everyone in the camp. The food was amazing, our driver was spectacular, and there were animals everywhere.”

&BEYOND GUEST





&BEYOND

DISCOVER MASAI MARA

Adventures of a lifetime

Classic safari experiences set against a backdrop of expansive landscapes, year-round wildlife theatre, Great Migration drama and the traditional world of the Maasai that is woven into these wild spaces.

DISCOVER MASAI MARA
Adventures of a Lifetime

Experiences and highlights



1

SAFARI GAME DRIVES

Spectacular landscapes filled with an abundance of wildlife make for unforgettable game drives in the Masai Mara is the quintessential African safari experience, with customised, open vehicles where guests can expect to encounter large numbers of plains game and spectacular predator interaction year-round.



2

HOT AIR BALLOON SAFARI

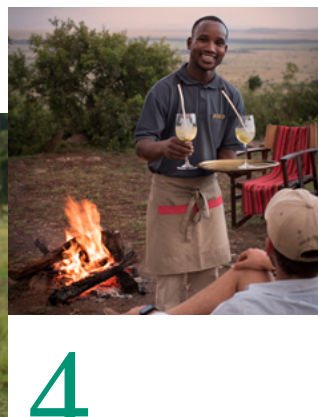
Guests will have a bird's-eye view of the Masai Mara National Reserve as they take to the dawn skies on a hot air balloon safari and float soundlessly over the boundless plains. The flight is about an hour and once landed, champagne and a full English bush breakfast in true *Out of Africa* style awaits.



3

BUSH WALKS

For those guests looking for fresh and thrilling on-the-ground views, this privately-guided activity offers the perfect opportunity to discover a multitude of natural wonders: following wildlife trails, discovering the complexities of tracking and learning to interpret the signs and sounds of the bush. Courtesy-use SWAROVSKI OPTIK binoculars will be an indispensable bonus.



4

BUSH DINING

Revel in the landscapes of Africa as you savour a meal served just like African explorers of old. Enjoy an open-air breakfast or al fresco dinner. Your every whim is taken care of, and your table set up in the wilds of Africa will make for an unforgettable dining experience.



5

MAASAI VILLAGE VISIT

Immerse yourself in authentic Maasai culture with a visit to a traditional village. Witness the daily rituals of these semi-nomadic and pastoralist people and their hustle and bustle in local life. Browse through the Maasai Craft Centre and purchase artefacts made by those you have encountered. All proceeds from this go directly to the community.

Go beyond the expected in the Masai Mara with adventures of a lifetime at &Beyond Kichwa Tembo and Bateleur Camp.

OTHER ACTIVITIES

MAASAI BLESSINGS OR CELEBRATIONS

A unique and special place to celebrate significant moments in life. We welcome guests that would like to revel in weddings, blessings and engagements

COMMUNITY VISIT

A community visit provides a first-hand experience of the projects Wild Impact (formerly Africa Foundation), our long-standing community and conservation development partner, is facilitating and supporting to enable future leaders, healthy ecosystems, future foundations and thriving communities

WELLNESS TREATMENTS OVERLOOKING THE PLAINS

After a safari-filled day, indulge in the pleasures of a Healing Earth wellness treatment at the Bateleur massage sala, the Kichwa massage tent or in the privacy of the guest room

Activities may incur an additional charge depending on which lodge you are staying at

DISCOVER MASAI MARA
Adventures of a Lifetime

Seasonal
highlights

YEAR-ROUND ACTIVITIES

✓ Safari game drives	✓ Sundowners	✓ Maasai village visit
✓ Big Five sightings	✓ Picnic in the African bush	✓ Maasai blessing or celebrations
✓ Birdwatching	✓ Bush dining*	✓ Wild Impact community visit
✓ Bush walks*	✓ Healing Earth wellness treatment	
✓ Hot air balloon safari	✓ Maasai performance	

*Weather dependent

TIMING IS EVERYTHING

	JAN	FEB	MAR	APR	MAY	JUN	JUL	AUG	SEP	OCT	NOV	DEC
Big Five game viewing	✓	✓	✓	✓	✓	✓	✓	✓	✓	✓	✓	✓
Bush walks	✓	✓	✓	✗	✗	✓	✓	✓	✓	✓	✗	✓
To view the Great Migration crossing over the Mara River between the Masai Mara and Serengeti	✗	✗	✗	✗	✗	✗	✓	✓	✓	✓	✗	✗
Maasai boma visit	✓	✓	✓	✓	✓	✓	✓	✓	✓	✓	✓	✓
Hot air balloon safari	✓	✓	✓	✓	✓	✓	✓	✓	✓	✓	✓	✓
To enjoy a less crowded Masai Mara, with good rates in low season	✗	✗	✓	✓	✓	✗	✗	✗	✗	✗	✓	✓
SEASONAL RATES**	\$\$\$/\$\$	\$\$	\$\$	\$	\$	\$/\$\$\$	\$\$\$	\$\$\$	\$\$\$	\$\$\$	\$\$	\$\$/\$\$\$

** The \$ / \$\$ / \$\$\$ references are used to indicate rate variation and are not associated with specific values



DISCOVER MASAI MARA
Adventures of a Lifetime

A day in the life

OF A GUEST

From the moment you wake up, your &Beyond experience is tailored to your interests and needs. Your butler and/or guide will discuss the day with you, including times and experiences, to ensure your day is as extraordinary as the location you are visiting. Here’s what to expect on a typical day on safari in the Masai Mara National Reserve.

TIMING

EXPERIENCE

Early morning	Early wake-up call with a hot cup of tea or coffee in your tent or at the main guest area/bar
Early morning to afternoon	<p>Depending on what you’d prefer and if the Great Migration is in season and in the area, there are a few game drive options available:</p> <ul style="list-style-type: none">• Go on an early-morning game drive with a tea and coffee stop, returning to the camp for breakfast and lunch. Enjoy the rest of your day at leisure, indulging in a wellness treatment or taking part in an optional lodge activity. Savour High Tea at the camp before heading out for an optional afternoon experience and/or game drive• Go on a morning game drive with either a tea and coffee stop or a pre-packed picnic bush breakfast, before returning to the camp for lunch. Enjoy the rest of your day at leisure, indulging in a wellness treatment or taking part in an optional lodge activity. Savour High Tea at the camp before heading out for an optional afternoon experience and/or game drive• When the Great Migration is in season and in the area, enjoy breakfast at the camp before heading out on a full-day game drive with a pre-packed picnic bush lunch. Return to the camp for dinner <p><i>Your guide will discuss your day with you the night before, confirming all available experiences beforehand. Please note, for added flexibility, a private vehicle must be booked in advanced at an additional cost</i></p>
Early morning to mid-morning (optional)	Be picked up from the camp for a balloon safari, following by a bush breakfast and shortened game drive on the way back to the camp
Optional activities	<p>Go on a local Maasai village visit or spend time with the Impact Team learning about the Nyakweri Forest and our other Wild Impact initiatives</p> <p><i>These experiences need to be selected as per your game drive schedule</i></p>
Evening	<p>Sip on your favourite pre-dinner drink of choice before enjoying dinner at the camp</p> <p><i>A Maasai dancing ceremony takes place every other night at the camp</i></p>

Timings and guest experiences are guidelines only.
All experiences are subject to availability and weather dependent. Some experiences are at an additional cost.





DISCOVER MASAI MARA

Lodge overview

Our two camps offer a variety of accommodation, from contemporary Superior Tents at Kichwa Tembo to the exclusive Luxury Tents of Bateleur, with tailor-made personalised service in a private concession.

DISCOVER MASAI MARA

Accommodation Overview

Our camps in the Masai Mara

Covering an area of 1 510 km² (583 mi²), the Masai Mara is a land of breathtaking vistas, abundant wildlife and endless landscapes.

Meaning 'head of the elephant' in Kiswahili, the Kichwa Tembo concession in the Mara Triangle consists of private land leased from Maasai landlords. In addition to the excellent year-round concentration of wildlife, the concession lies directly in the path of Africa's spectacular Great Migration.

Our two camps offer a variety of accommodation, from contemporary Superior Tents in the forest to Luxury Tents offering an additional level of amenities and personalised service.

&BEYOND BATELEUR CAMP

Situated below the scenic location where the famous final scene of the movie *Out of Africa* was filmed, this romantic and totally private camp reflects the ambiance of Kenyan safaris of the '20s and '30s. The epitome of tented luxury, &Beyond Bateleur Camp comprises just two intimate camps of nine Luxury Tents each, set among the forests on the edge of the Masai Mara.

&BEYOND KICHWA TEMBO TENTED CAMP

Steeped in the aura of classical safari, &Beyond Kichwa Tembo Tented Camp boasts 26 Superior Tents and eight Superior View Tents. While the Superior Tents look out onto the open grasslands or the shady forest surrounding the Saparango River, the Superior View Tents boast exceptionally beautiful, uninterrupted views of the Masai Mara. Celebrating the romance and nostalgia of the Mara, this is a camp with a warm family feeling, where Kenyan hospitality abounds.

PERSONALISED SERVICE AT BATELEUR CAMP



SUPERIOR VIEW TENT AT KICHWA TEMBO

IMPACT INITIATIVES

&Beyond Bateleur Camp has received a **gold eco-rating status** from Eco-Tourism Kenya

We collaborate closely with **Wild Impact** (formerly Africa Foundation), our long-standing community and conservation development partner, on a range of initiatives and programmes:

Over USD 420 000 invested since 2006 into education and healthcare in neighbouring communities

Community Leaders Education Fund: 11 tertiary level students supported through bursaries in the Masai Mara.

We are creating **conservation awareness** through education where over 203 children and adults partake annually

98% of the employees at the lodge are Kenyan and 50% are from local communities

64% of goods are procured from communities around the Masai Mara

By **bottling water on site** and using **glass bottles**, &Beyond Bateleur Camp with &Beyond Kichwa Tembo Tented Camp save approximately 56 000 bottles from going in to land fill sites annually

We are a part of the **Lionscape Coalition**, which supports lion conservation efforts through the Lion Recovery Fund.

All plastic, glass, and materials such as old engine oil are sent away for **re-use and recycling**

Energy use is tracked and reported on a monthly basis. This includes the use of wood, petrol, diesel, electricity, gas, paraffin and charcoal

We take steps to **conserve water**, including monitoring usage closely

Our tented camps



1

BATELEUR CAMP

Luxury Tent: 87 m² (936 ft²)

Luxury Family Tent: 185 m² (1 991 ft²)

The epitome of tented luxury, Beyond Bateleur Camp comprises just two intimate camps of nine Luxury Tents including one Luxury Family Tent, set with magnificent views out on to the plains of the Masai Mara. With private butler service and four-seater vehicles, a massage sala and gym, this is a personalised and exclusive experience brimming with Kenyan hospitality and delight. Classical elegance defines our tents, with polished wooden floors and ensuite bathrooms comprising both indoor and outdoor showers and a 'star bath' with sky views. Each tent overlooks the plains of the Masai Mara, together with the convenience of a personal bar and coffee station.



2

KICHWA TEMBO

Superior View: 52 m² (560 ft²)

Superior Tent: 52 m² (560 ft²)

Superior Family Tent: 115 m² (1 238 ft²)

Steeped in the aura of classical safari, this 34-tent camp showcases a simple yet contemporary style, perfect for families, groups and couples who enjoy a livelier atmosphere. A double-storey bar and lounge area feature spectacular panoramas. Made up of eight Superior View and 20 Superior Tents, including three Superior Family Tents, each tent features beautiful Maasai inspired interiors that showcase use of local materials. Oversized beds are perfectly positioned to make the most of the views, while natural toned furniture combine with tribal decorative elements, making for an authentic display of the culture.

DISCOVER MASAI MARA

Camps Overview

Camp comparison

OVERVIEW

	BATELEUR CAMP	KICHWA TEMBO
Maximum number of guests	36 (18 in each camp)	80
Number of rooms	9 Tents	40 Tents
Family accommodation	1 Luxury Family Tent (2 Tents with interleading passage and seating area)	3 Superior Family Tents (2 Tents with interleading walkway)
Room types	Luxury Tents	Tented Suites
Pilot / Guide accomodation	Available	Available
Distance between rooms	10 m (33 ft)	6 – 10 m (20 – 33 ft)
Check-in / Check-out times	14h00 / 10h00	14h00 / 10h00

FACILITIES

Power	24-hour power	24-hour power
Internet access	Yes, Wi-Fi throughout	Yes, Wi-Fi throughout
Wine store or cellar	No	No
Boma	Yes. in South Camp	Yes
Interactive kitchen	Yes, for breakfast only	Yes
Swimming pool	Yes, each camp has a pool (not heated)	Yes, lodge swimming pool (not heated)
Wellness offering	Healing Earth wellness treatments offered in-room or in the massage sala	Healing Earth wellness treatments offered in the massage tent
Fitness options	Well-equipped gym and gym-in-a-basket in each room (available on request)	No
Conference facilities	No	Yes
Weddings and blessings	Yes, consult your travel specialist	Yes, consult your travel specialist
Wheelchair accessibility	Possible with assistance in certain cases	Possible with assistance in certain cases
Complimentary laundry service	Yes	Yes
BEYOND Safari Shop	Yes	Yes

(continues on next page)

Camp comparison (cont.)

DINING	BATELEUR CAMP	KICHWA TEMBO
Food / Dietary options	Kosher not available. Halaal and other special dietary requests available – please book in advance	Kosher not available. Halaal and other special dietary requests available – please book in advance
Butler service	Yes	No
Plated service	Yes	Buffet
Private dining	Yes	Yes
PAYMENT ACCEPTED		
Credit cards accepted	Visa and Mastercard	Visa and Mastercard
Currency	USD are widely used, however, notes dated prior to 2006 are not accepted	USD are widely used, however, notes dated prior to 2006 are not accepted
OTHER		
Vehicle type	4-seater and 6-seater semi-open safari vehicles	6-seater and 8-seater semi-open safari vehicles
Private 4x4 safari vehicle	Depending on availability and at an additional cost	Depending on availability and at an additional cost
Activity inclusion	8Beyond lodge and safari activities, excluding hot air balloon safaris, community visits to a Maasai boma, wellness treatments and Maasai dancers for private functions	Safari game drive only

Accommodation comparison

	BATELEUR CAMP LUXURY TENTS & FAMILY TENT	KICHWA TEMBO SUPERIOR VIEW TENTS	SUPERIOR & SUPERIOR FAMILY TENTS
Room size (square meters)	Luxury Tent: 87 m ² (936 ft ²) Luxury Family Tent: 185 m ² (1 991 ft ²)	52 m ² (560 ft ²)	Superior Tent: 115 m ² (1 238 ft ²) Superior Family Tent: 52 m ² (560 ft ²)
Private veranda	Yes	Yes	Yes
Personal bar	Yes	No	No
Personal coffee station	Yes	No	No
Air conditioning / heating	No	No	No
Overhead fans	Yes	No, floor fans	No, floor fans
Mosquito nets	No, sealed tent	No, sealed tent	No, sealed tent
Bath	Yes	No	No
Shower	Indoor and outdoor showers	Yes, indoor	Yes, indoor
Seperate WC	Yes	Yes	Yes
Telephone	In-room telephones are available	In-room telephones are available	In-room telephones are available
Hairdryer	Yes	Yes	Yes
Internet access	Yes	Yes	Yes
In-room safe	Yes	Yes	Yes
Plug type	220V AC (plug points in rooms) Plug type: G British – BS 1363	220V AC (plug points in rooms) Plug type: G British – BS 1363	220V AC (plug points in rooms) Plug type: G British – BS 1363
Triple bed option	2 (children 16 years and younger)	3 (children 16 years and younger) in Superior Tents only	3 (children 16 years and younger) in Superior Tents only
Twin bed option	All convertible to twin or double	All convertible to twin or double	All convertible to twin or double



andBEYOND



@andbeyondtravel
#seewhatliesbeyond

andBeyond.com