



# OLONANA LODGE

AN A&K SANCTUARY

*Maasai Mara, Kenya*



*The lodge is set on the scenic Mara River*

## An enchanting riverside sanctuary in Africa's most sensational reserve

On a secluded stretch of Kenya's Mara River, bordering the Maasai Mara National Reserve, Olonana Lodge is an elegant hideaway in one of the most biologically diverse and culturally rich regions in Africa; the scene of surely the most astonishing wildlife show on earth – the annual Great Migration. Brilliant Maasai guides will reveal the reserve's natural and cultural wonders, from the Big Five to bushcraft, while back at base 14 glass and adobe suites and the grand Geoffrey Kent Suite, plus a swimming pool, gym, open-air lounge and children's retreat, all add up to an unrivalled safari stay.

# Six Reasons to Choose Olonana Lodge



01



*Dramatic Great Migration scenes*

Perfectly placed for guests to see the annual Great Migration in the Maasai Mara.

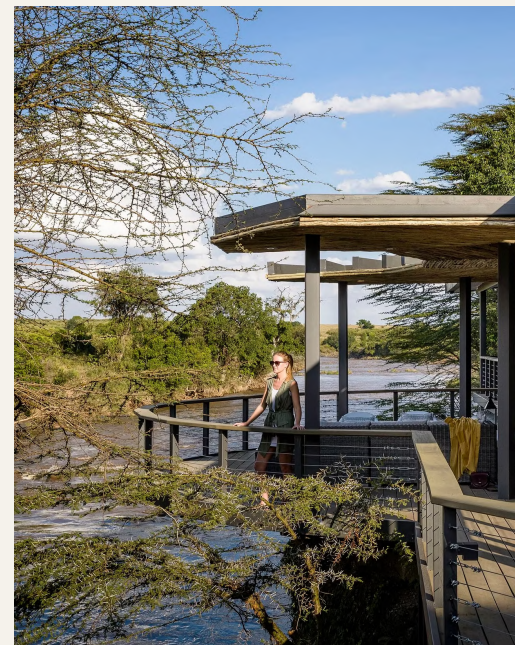
02



*Buffaloes are one of the Big Five*

Thrilling opportunities to spot Africa's famous Big Five, year-round.

03



*The rushing river soundtracks a stay here*

Enchanting riverside setting above a resident pod of snorting hippos.

04



*Expert guides lead guests out after dark*

Walking safaris and night drives are available in Oloisukut Conservancy.

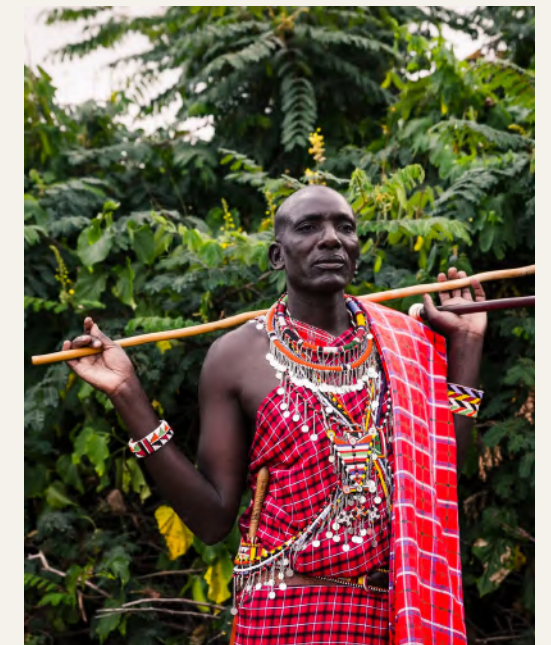
05



*Olonana is a contemporary hideaway*

The lodge is stylish and charming, with 14 contemporary suites and one spacious Geoffrey Kent Suite.

06



*Maasai guides share their knowledge*

Brilliant local Maasai safari guides who get guests close to the action.

# The Lodge



Olonana Lodge is a trailblazer of modern safari style. Set on a secluded stretch of the Mara River, bordering the Maasai Mara National Reserve, it has been expanded and rebuilt as a pared-down contemporary hideaway. Local wood and stone, homespun textiles and African art are used to striking effect in the 14 glass and adobe suites and the grand Geoffrey Kent Suite, which all overlook the river. A stay at Olonana Lodge is a deeply immersive experience in this culturally rich part of Africa – from the excellent Maasai guides who plug guests into the natural wonders all around to the adobe walls that are “mudded” each year by Maasai women using local clay.

In the gardens the chefs grow organic ingredients for delicious farm-to-fork meals served inside or in the open-air restaurant overlooking the river, where hippos wallow in the shade of acacias. There’s a swimming pool, gym and children’s retreat, and spa treatments are available, but the biggest thrills lie in the great beyond, where the Great Migration plays out from July to September (though exact timings vary from year to year) and the iconic Big Five stomp and stalk year-round.

*Decks overlook the Mara River*



*"The lodge has a striking design, using local wood and stone with a modern edge."*



*There are many cosy corners for relaxing*

# The Lodge



## NUMBER ONE FOR FAMILIES

At the lodge's dedicated children's hangout 4- to 12-year-olds can play giant Jenga, tetherball and (child-friendly) bows and arrows, and enjoy activities such as beading sessions. For teens, there's archery, tracking and visiting local communities to experience Maasai life. On game drives family-friendly guides know how to keep children of all ages entertained and engaged.

## BAR

Sample standout cocktails in the open-air bar: a Garden Gimlet, made with Kenyan Procera gin and infused with mint, basil, thyme and rosemary from the garden; and a Mara Minted Dawa, the welcome drink, a non-alcoholic blend of fresh ginger juice, honey, lemonade, soda water and mint.

## TREE PLANTING

Olonana Lodge runs an ongoing tree-planting initiative, in which guests can take part. More than 10,000 indigenous varieties, including East African greenheart, acacia and diamond-leaved euclea, have been planted.

## BUSH BOUTIQUE

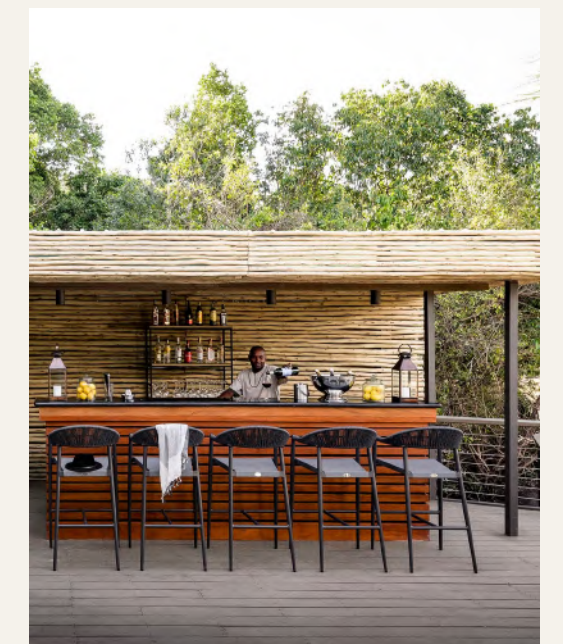
The curated selection of African-crafted items in the on-site Bush Boutique means guests can take home more than just memories from this incredible place.

## SPA AND WELLNESS

Spa treatments using organic products made in Africa by Healing Earth can be arranged in-suite or out on the deck, to a soundtrack of birdsong. The open-sided gym has treadmills, exercise bikes, weights and a rowing machine, plus views of nature (and the odd vervet monkey).

## SWIMMING POOL

The heated swimming pool is a cool sanctuary, set with daybeds and parasols on the poolside terrace and lawn and surrounded by the green gardens which Olonana's staff and guests have planted over the past three decades.



CLOCKWISE FROM LEFT  
*Leafy landscape envelops the lodge*  
*Join the tree-planting initiative*  
*The bar serves garden-inspired cocktails*

# The Lodge



*The chefs grow leafy greens*

*Shaded loungers are set up at the pool*

GPS Coordinates	GPS 01° 14' 17.00" S, 35° 02' 01.00" E
Open Year Round	Yes
Number of Rooms	14 suites (3 family) and 1 Geoffrey Kent Suite
Maximum Number of Guests	32
Child Policy	Children of all ages are welcome. Children under 15 must share with an adult
Guide/Pilot Accommodation	Yes; 2
Wheelchair Accessible	Limited access
Power Supply	Main grid power with solar, inverter, and backup generator
WiFi Available	Yes, in all areas
Binoculars Provided	Yes; Leica binoculars provided for every guest
Lodge Fenced	Yes
Credit cards Accepted	Visa, MasterCard
Currencies Accepted	USD, Pound, Euro and Kenyan Shillings
Swimming Pool	Yes
Spa/Treatment Room	Yes; in-room treatments
Gym	Yes

# The Suites



Strung out along the banks of the Mara, all the suites at Olonana overlook the river and its resident pod of hippos. Of the 14 suites, three have an adjoining bedroom for families – as does the luxurious, two-bedroom Geoffrey Kent Suite. Each one is stylish, spacious and open-plan, with folding glass doors opening onto private terraces, and slate-and-marble ensuite bathrooms with indulgently large bathtubs.

*The bathtubs call for deep soaks*

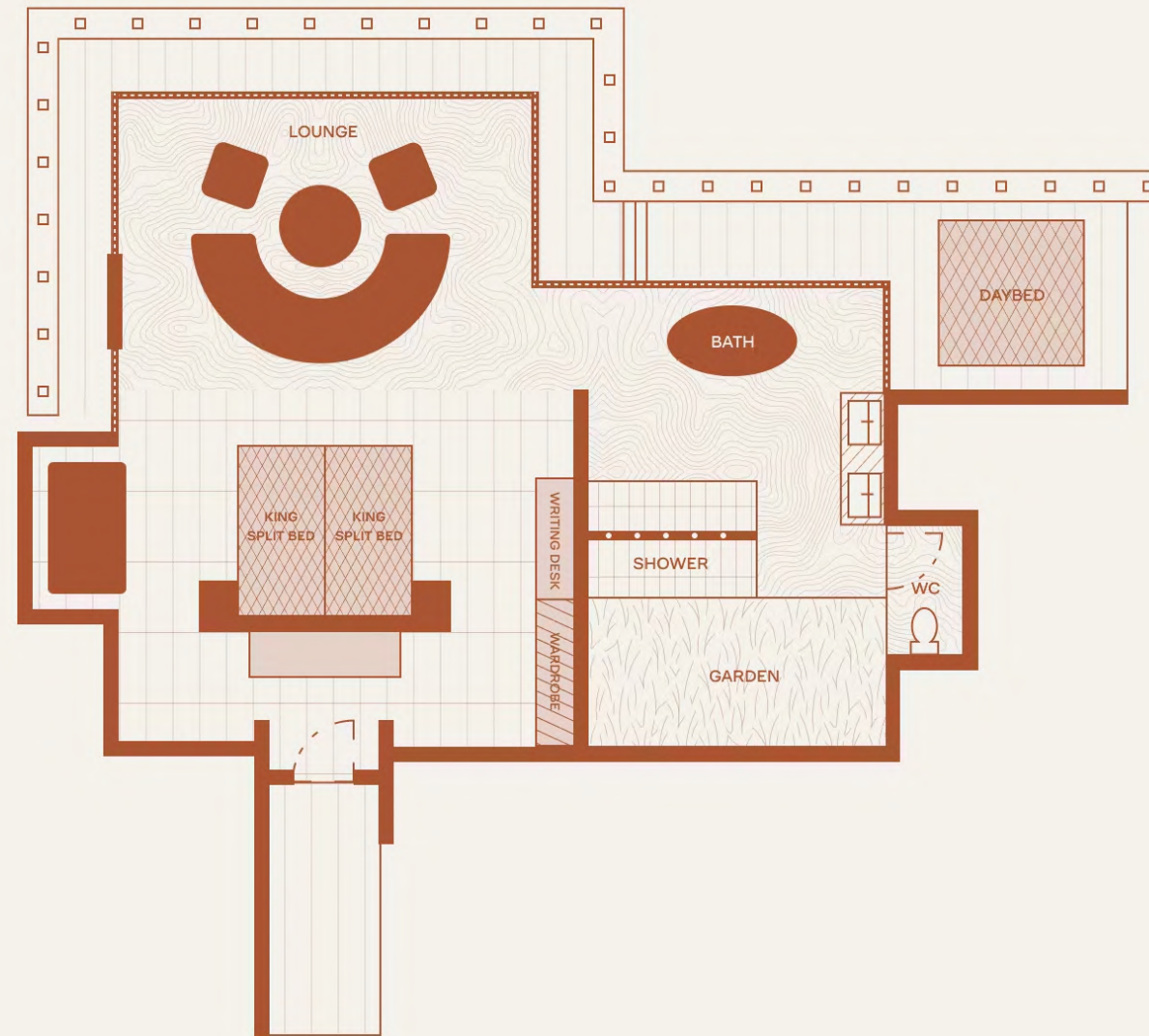


*"Each suite has a private terrace overlooking the river, with its resident pod of hippos."*



*River views are on tap in every suite*

# The Suites

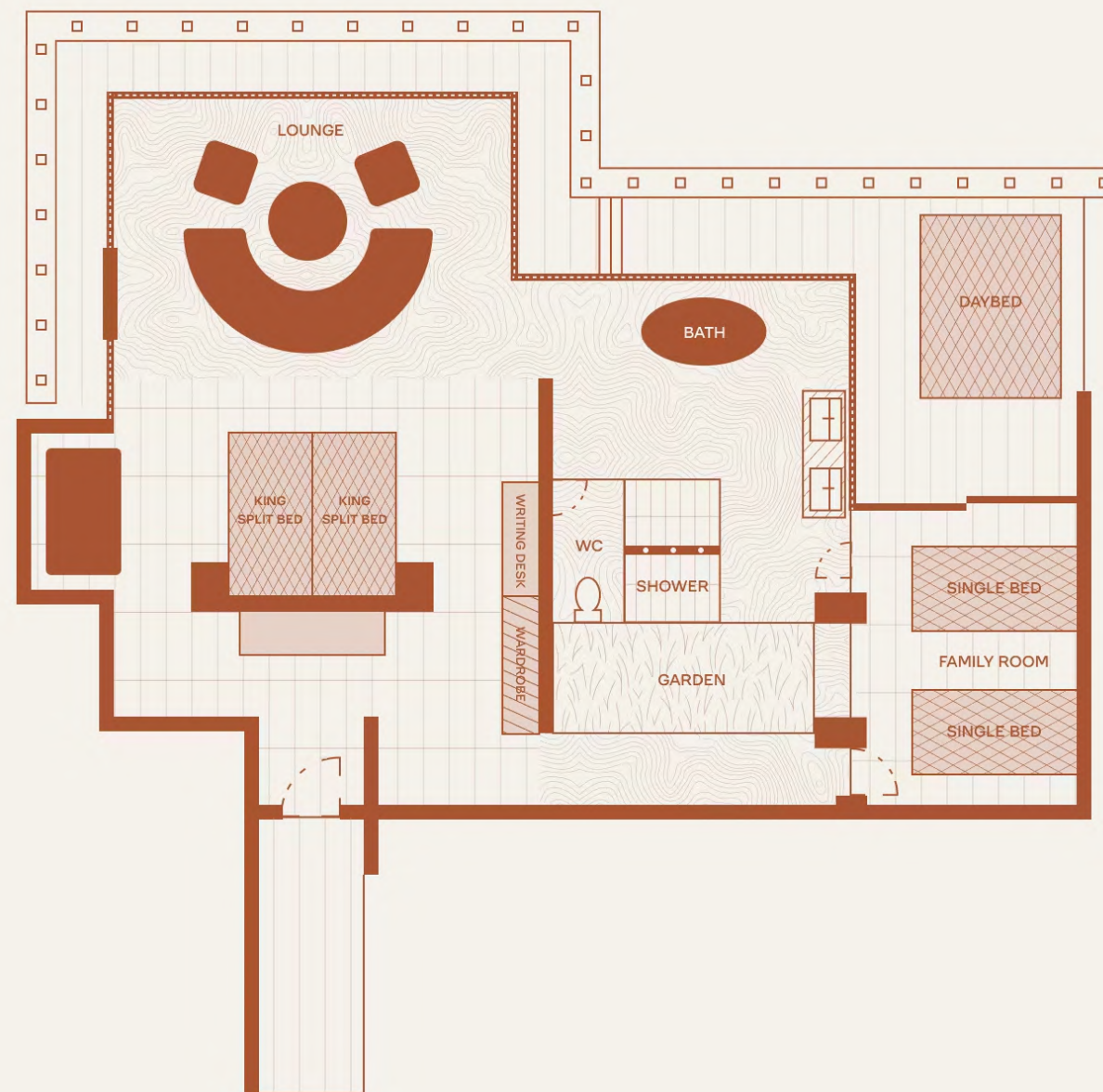


## SUITE | SLEEPS 2 | 142 SQM

All have river views, a canopied king-size bed, seating areas, terraces with daybeds, ensuite bathrooms with bathtubs and rain showers, and air con.

Room Size	142m2
Bed Configuration (King or Twin)	All rooms can be converted to a king or twins
Triple Rooms Available	Yes; subject to availability
Mini Bar	Yes
Tea and Coffee Station	Yes
Air Conditioning	Yes
Overhead Fan	Yes
Mosquito Net	Yes
Plug Type	Type G Plug, USB and USB Type C
Bath	Yes
Indoor Shower	Yes
Outdoor Shower	No
Hairdryer	Yes

# The Family Suites



## **FAMILY SUITE | SLEEPS 4 | 142SQM**

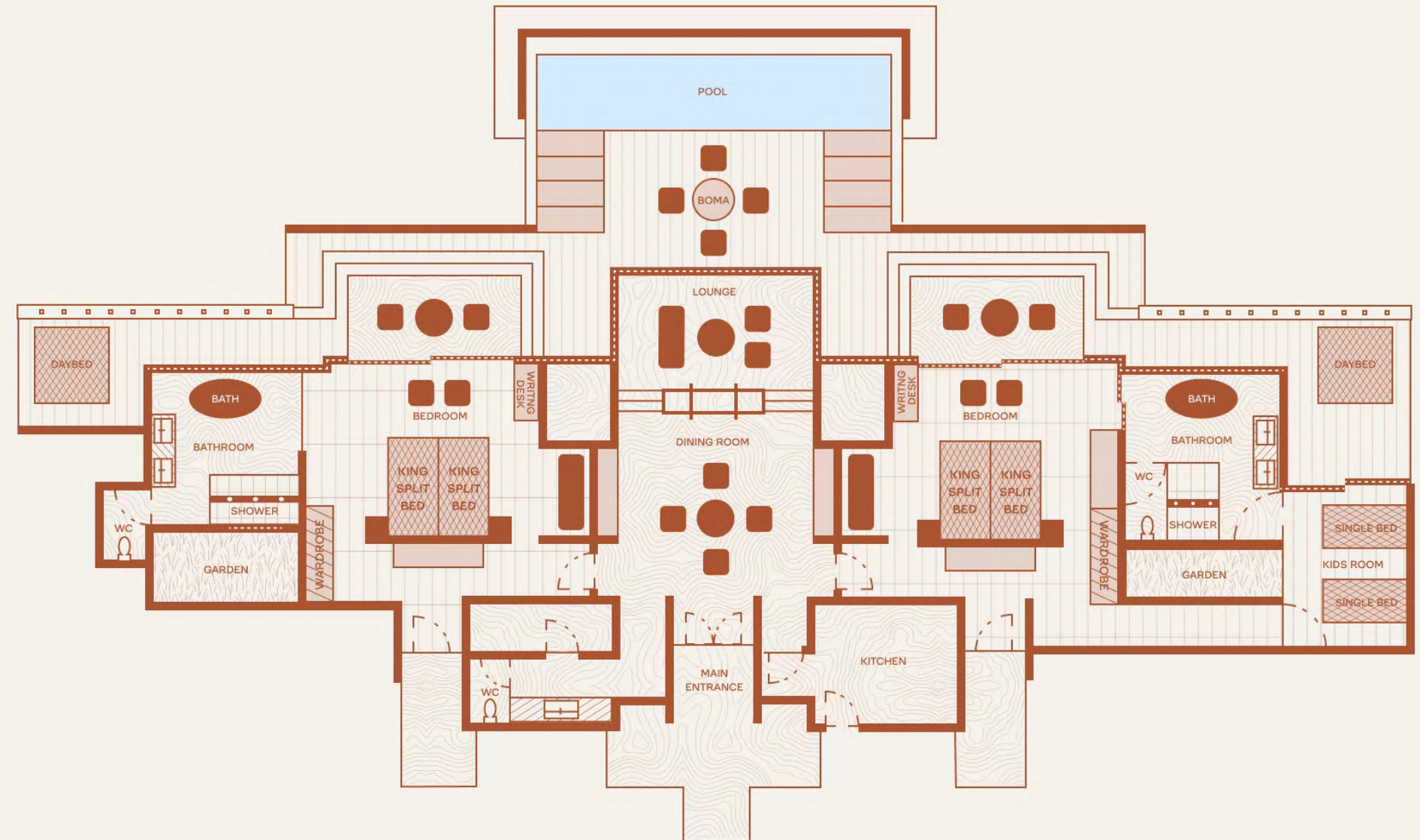
Three of the 14 suites have an adjoining bedroom with twin beds, meaning there's plenty of room for families with children to spread out; plus, river views, ensuite bathrooms with bathtubs and rain showers, and air con.

Room Size	142m2
Bed Configuration (King or Twin)	All rooms can be converted to a king or twins
Triple Rooms Available	Yes; subject to availability
Mini Bar	Yes
Tea and Coffee Station	Yes
Air Conditioning	Yes
Overhead Fan	Yes
Mosquito Net	Yes
Plug Type	Type G Plug, USB and USB Type C
Bath	Yes
Indoor Shower	Yes
Outdoor Shower	No
Hairdryer	Yes

# The Geoffrey Kent Suite



Maximum Number of Guests	6
Rooms Size	478m2, 2 bedrooms and one is a family room
Bed Configuration (King or Twin)	All rooms can be converted to a king or twins
Triple Rooms Available	Yes; subject to availability
Mini Bar	Yes
Tea and Coffee Station	Yes
Air Conditioning	Yes
Overhead Fan	Yes
Mosquito Net	Yes
Plug Type	Type G Plug, USB and USB Type C
Bath	Yes
Indoor Shower	Yes
Outdoor Shower	No
Hairdryer	Yes
Private Vehicle	Yes
Private Chef	Yes
Private Housekeeper	Yes



## GEOFFREY KENT SUITE | SLEEPS 6 | 478 SQM

Tucked away down a secluded driveway, the three-bedroom Geoffrey Kent Suite takes things to the next level, with its own heated infinity pool on a wraparound deck, a private chef, housekeeper, waiter, vehicle and guide who can personalize every aspect of guests' safari. There are two main bedrooms, one of them with a smaller adjoining bedroom suitable for families.

# Food & Drink



The excellent food offering at Olonana Lodge includes contemporary dishes with local ingredients such as ugali (maize meal polenta), mukimo (mashed potatoes with greens and maize) and chapati (flatbread). These are often paired with grilled meats and fish (Lake Victoria tilapia, perhaps), garden vegetables or rich stews. As well as three meals a day, there are treats such as freshly brewed coffee and home-baked scones out in the bush, or a sundowner and snacks beside the campfire. As with all A&K Sanctuary lodges and camps, food and drink is included.

- A continental or Full English breakfast is served at the lodge before the morning activity.
- Lunch is served at the lodge, in the organic garden, or gourmet picnic-style in the bush if guests are out game-spotting.
- Dinner comprises three courses, with two or three options per course, chosen from a set menu.
- Private, special-occasion dinners can be arranged on request – in the bush or by candlelight. Guests should just say the word if they'd like to be serenaded – the back-of-house team love an excuse to break out the drums.

*Dishes use local ingredients*



*The open-air restaurant has a contemporary design*

# Lodge Location



A name that conjures images of rolling, acacia-dotted grasslands populated with the most iconic animals in Africa, Maasai Mara is a vast expanse of wilderness in southwestern Kenya, at the border with Tanzania. Olonana Lodge occupies a covetable position just north on the famous Mara Triangle, at the edge of the Maasai Mara National Reserve – a marvellously secluded and leafy spot, between looming escarpment and fast-flowing river. Below the terraces of the lodge, a resident pod of hippos wallows in the shade of trees.

Olonana is uniquely placed for the Great Migration, due to its proximity to the Mara River and the Oloololo Escarpment. It's a short drive from several crossing points, where between July and October great herds

of wildebeest and zebra thunder through the crocodile-infested river – perhaps the climax of the most dramatic natural phenomenon in the world. Our guides can take guests close to the action, and know about the best viewpoints away from other safarigoers.

While the game viewing in the Mara is excellent year-round (the famous Big Five are among the 95 mammal species that live here, as well as 450 species of bird), there is also the opportunity to experience Kenya's rich cultural heritage. Many local communities still follow traditional ways of life, practising ancient customs and rituals. Visiting villages provides an opportunity to understand Maasai traditions and history as well as community development and the preservation of age-old livelihoods.

*See the epic landscape from a hot-air balloon*



*Kenya's Maasai Mara is an iconic wilderness*

# Getting There



*A Maasai welcome awaits*



Nairobi Wilson Airport to Kichwa Tembo Airstrip

1-hour flight



Kichwa Tembo Airstrip to the Lodge / Nairobi to Olonana Lodge

30-minute drive / 6-hour drive

Please note, luggage restriction for light aircraft is 20kg/44lbs per person in a soft-sided bag, including hand-luggage.

# Experiences



With activities for every generation within and beyond Olonana Lodge, no one gets bored on their Kenyan safari adventure. There's wildlife viewing on game drives, of course, from giraffes gracefully striding across the plains to thundering wildebeest and zebra. There are also serene sunrise rides over the Mara in a hot-air balloon, bush walks to get into the thick of it and night drives to explore the Oloisukut Conservancy after dark. Just as enriching are visits to local Maasai communities to learn about their unique, age-old culture from the Maasai themselves.



*Game drives are a daily thrill*

## **GAME DRIVES**

Guests on game drives are rewarded with abundant wildlife viewing year-round, but between July and October this is dialled up even further when more than a million wildebeest and zebra make their way across the Maasai Mara in search of pastures new, facing hungry predators and geographical obstacles along the way.



*The lodge works with local communities*

## **MAASAI COMMUNITY VISITS**

Olonana has a strong, longstanding and mutually beneficial relationship with local Maasai communities who invite guests to experience their culture, customs and daily life first hand.



*Expert guides lead bush walks*

## **BESPOKE BUSH WALKS**

When you're in one of the most extraordinary landscapes on earth, it's a treat to be able to explore it from every angle. As Olonana is situated within a private conservancy adjacent to the Maasai Mara National Reserve, guided walks are not merely possible but strongly recommended.

# Experiences



With activities for every generation within and beyond Olonana Lodge, no one gets bored on their Kenyan safari adventure. There's wildlife viewing on game drives, of course, from giraffes gracefully striding across the plains to thundering wildebeest and zebra. There are also serene sunrise rides over the Mara in a hot-air balloon, bush walks to get into the thick of it and night drives to explore the Oloisukut Conservancy after dark. Just as enriching are visits to local Maasai communities to learn about their unique, age-old culture from the Maasai themselves.



*Hot-air balloon flights give a bird's-eye view*

## **HOT-AIR BALLOONING**

The blurry-eyed pre-dawn wake-up is infinitely worth it to witness the landscape of the Maasai Mara take shape in the first rays of morning sunshine as you float serenely over it in a hot-air balloon.



*Exploring the conservancy as night falls*

## **NIGHT DRIVES**

An unseen world of animal magic plays out come nightfall. Guests at Olonana Lodge get a snapshot of the Maasai Mara's nocturnal activity when expert guides lead small groups to discover the Oloisukut Conservancy after dark.

# Wildlife & Nature

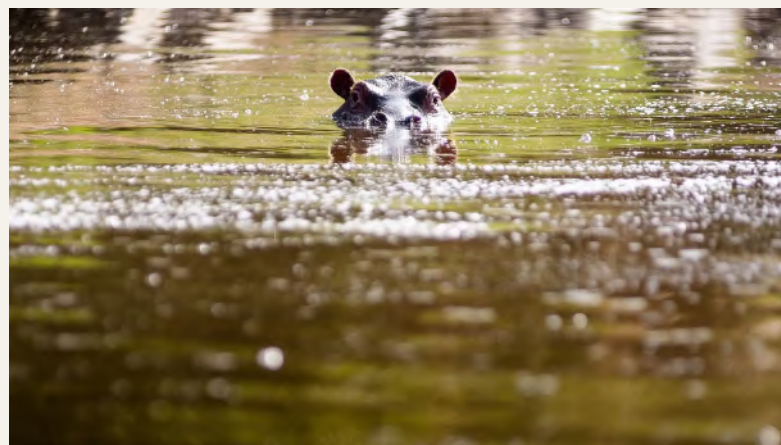
---

Guests at Olonana don't need to leave the comfort of the lodge to spot wide-eyed bush babies, agile vervet monkeys and wallowing hippos. These close-to-home creatures are just a taster of the abundant wildlife and big game that inhabit this northern pocket of the exalted Mara-Serengeti ecosystem.

The headline acts are surely the million-strong herds of wildebeest, zebra, and gazelle that form the annual migration across the grasslands of the Maasai Mara between July and September. Their food-finding mission is made even more high stakes due to the large predators – stealthy lions and snapping crocodiles – that lurk along the way. Around October, the main herds that have survived begin their journey towards Tanzania.

In the Maasai Mara and surrounding areas, guests are also likely to see elephants, giraffes, hyenas, and more than 450 species of bird. Another natural feature of note is the lodge's tree-planting initiative, in which guests can take part – in fact, they've helped to sow more than 10,000 indigenous varieties.

*Spot hippos wallowing in the river*



*A lion resting in the short grass*

# Your Olonana Lodge Safari



*Sunrise over the Maasai Mara*

Days at Olonana Lodge deliver pulse-quickening adventure as well as serene moments to simply soak up the incredible nature all around. The lodge's expert team of guides and support staff cleverly choreograph every detail – from action-packed morning game drives to pre-dinner cocktails in the bar.

#### **A TYPICAL DAY MIGHT INCLUDE:**

- Wake-Up Call - Enjoy a tea or coffee on your own deck as the soft morning light illuminates the Mara.
- Breakfast - A fresh, hearty breakfast served in the lodge: look out for the odd monkey scampering in the trees.
- Morning Activity - Set out with binoculars primed to spot the Big Five or a whole herd of wildebeest on the move.
- Lunch - Return to the lodge for a delicious lunch of safari-style dishes.
- Afternoon Activity - Another opportunity to explore with the expert guides or visit a local community.
- Drinks and Dinner - The moment to sit back and swap stories of the day's adventures over sundowners and a three-course dinner.

# The Details



## HONEYMOON, ANNIVERSARIES & SPECIAL OCCASIONS

Romance and luxury are woven into each of our stays, but our Olonana Lodge team adds an extra sprinkling of magic when it comes to special occasions. From a private candle-lit dinner by the pool to a honeymoon bath set up in the room with sparkling wine, the team creates once-in-a-lifetime experiences that celebrate a visit to the extraordinary setting of Kenya's Maasai Mara.

## FAMILIES WITH CHILDREN

The natural spectacle and cultural impact of a Kenyan safari is something that families will remember as a shared experience forever: close encounters with rare African animals roaming free; learning to throw a spear, or track animals with a Maasai guide; the warmth and spirit of the team, the songs and drums of the local people. Olonana is our family safari lodge, thoughtfully designed, with modern luxuries that make it easy for all ages. Cheza Cheza is the dedicated children's hangout for those aged 4-12, with outdoor games such as giant Jenga, tetherball and (child-friendly) bows and arrows. Teenagers will enjoy archery sessions, tracking experiences, learning more about conservation and sustainability, and visiting local communities. Family-friendly guides know how to keep children of all ages entertained and engaged on game drives.

## INCLUSIONS

- All meals, non-alcoholic and alcoholic beverages (including premium brands)
- Transfers to/from Kichwa Tembo Airstrip
- Activities include: game drives, Maasai village visit, and bespoke bush walks
- Emergency medical evacuation
- Laundry services
- Geoffrey Kent Suite included services: Guests will benefit from their own private vehicle, chef and housekeeper, all meals will be enjoyed at the suite together, heated pool and boma overlooking the Mara River

## EXCLUSIONS

- Park fees
- International and domestic flights, landing fees
- Road transfers to and from other camps and lodges
- Travel insurance, boutique purchases, spa treatments, gratuities, and all other items of a personal nature
- Additional activities not listed



*Meals can be set up in the bush*



*There are ample decks for moments of quiet*

# Travel Tips



## WHAT TO PACK

Clothing should be cool and comfortable; and colours should blend in with nature as much as possible. Greens, browns and khaki coloured clothing are advisable for safaris. Guests are advised to pack their swimwear. We suggest long sleeves and long trousers for morning and evenings due to mosquitoes; and a fleece, sweater or warm jacket for morning and evening game drives. Sturdy and comfortable shoes are essential. A complimentary overnight laundry service is offered in the lodge.

Accessories: Sunscreen, sunglasses and hats are essential. Binoculars and good cameras are an absolute must. The lodge provides a torch as well as complimentary mosquito repellent and toiletries.

## HEALTH

Please discuss health precautions for your travel itinerary with a qualified health professional at least six weeks before departure. We also advise all travellers to take precautions against malaria.

## MONEY & CREDIT CARDS

All extras can be paid for with Visa, MasterCard, American Express and traveller's cheques. US dollars, British pounds, Euros and Kenyan shillings are also accepted; however, change will be given in the local currency.

## GRATUITY GUIDELINES

Tipping and gratuities remain entirely at your discretion.

*Nighttime is magical*





While it's impossible to predict the weather on the wild expanse of the Maasai Mara, guests might find it helpful to learn how a visit to Olonana Lodge might differ from one month to the next: from when to book the best-value stays to the ideal time to witness the full-throttle drama of the Great Migration.



*Look out for the Mara's big cats*



*Keen-eyed guides on the lookout*



*The natural wonder of the Great Migration*



*Hundreds of bird species call this area home*

## **JANUARY–MARCH**

This is prime time for sightings of predators, especially big cats. Lower visitor numbers mean more intimate game drives for those who do book. The landscape is lush and green at this time of year, and there are excellent opportunities for birdwatching.

## **APRIL–JUNE**

The air is crystal-clear, leading to dramatic skies with a chance of rainbows. There is increased predator activity as big cats work harder for their prey. Visitor numbers are still low, resulting in more exclusive wildlife and photography opportunities. Stays in April and May offer superb value, with rates 30% to 50% lower than in the highest demand months.

## **JULY–OCTOBER**

Thousands of wildebeest migrate into the Maasai Mara in search of water and fresh pasture (though exact timings vary from year to year). These wildebeest face threats from big cats and lurking crocodiles during river crossings. It's an ideal time of year for full-day game drives in pursuit of dramatic wildlife action. The Maasai Mara is in full bloom, making this the perfect season to experience the region's flora and fauna.

## **NOVEMBER–DECEMBER**

The short rains have arrived, revitalizing the grasslands. Wildlife spreads out and, with the herds of wildebeest gone, other animals begin to breed. These winter months are prime time for birdwatching as European migratory birds start to arrive.

# A&K Philanthropy Initiatives in Kenya



*A&K Philanthropy strives to protect the natural habitat*

## **JOURNEYS WITH PURPOSE**

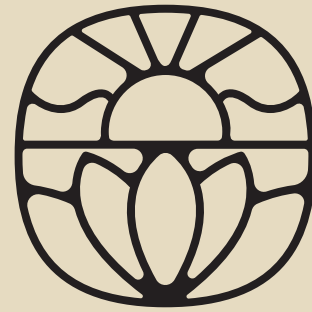
The A&K Philanthropy nonprofit network now spans 24 countries on all seven continents, positively impacting hundreds of thousands of lives and helping preserve some of the world's most precious ecosystems. Our initiatives focus on education, enterprise, health and environment, aiming to support and empower local communities to facilitate the protection of their surroundings, and to ensure that the people in the places where we travel are also benefitting directly from tourism.

## **SAFE WATER FOR SCHOOLS**

Since 2017, A&K Philanthropy has partnered with LifeStraw, makers of an accessible water filtering and purification device, to provide safe water to thousands of children in India, Kenya, Tanzania, Uganda, Vietnam and Zambia. When the program first started, we were proud to deliver sustainable, safe water to children in the Maasai Mara. Since then, AKP has funded and distributed 829 filtration systems in schools, with each filter serving up to 100 children for a period of five years. Guests in the areas where LifeStraw has been installed can see firsthand how this simple device makes a great impact on the community's overall health and wellbeing.

## **SCHOOL LUNCH PROGRAM**

AKP has partnered with local communities throughout Kenya, Namibia, Uganda and Zambia to provide daily nutritious lunches to local students. Since the project began in 2017, it has provided daily lunches to more than 12,000 students in 16 schools spanning the communities from the Maasai Mara to Bwindi Impenetrable Forest National Park and from Mosi-oa-Tunya National Park to the Purros Conservancy.



A&K SANCTUARY