



# SWALA CAMP

AN A&K SANCTUARY



*Tarangire National Park, Tanzania*



*The spectacular savannah of Tarangire National Park*

## A secluded sanctuary in quintessential East African safari territory

Consciously crafted Swala Camp sits beneath a natural canopy of acacia trees in Tanzania's magnificent yet relatively little visited Tarangire National Park. The sensitive design of the stilted, thatched-roof communal areas, and swimming pool tucked neatly at the foot of an ancient baobab tree, means this small but mighty camp fits seamlessly into its surroundings. Each of the 12 guest tents has savannah-stretching views. Not that guests need to look too far to spot an iconic African animal – some of the elephant neighbors are such frequent visitors they are known by name. Above-and-beyond activities such as game drives, bush picnics, night drives, walking safaris and hot-air balloon rides let guests experience this spectacular park from every vantage point.

# Six Reasons to Choose Swala Camp



01



*Swala Camp's scenic setting*

Spectacular location in Tarangire National Park, one of the most captivating and least visited parks in northern Tanzania, famed for its baobab trees and elephant herds.

02



*Enjoying sundowners on the deck*

Just 12 luxurious acacia-shaded tents, all with outdoor showers and views over the wildlife-drawing savannah.

03



*Elephants often stride by*

Wildlife in and around the camp include elephants, a resident herd of impala, mongoose, leopards and lions.

04



*Expert guides lead walking safaris*

As well as twice-daily game drives, additional activities include bush picnics, night drives, walking safaris and hot-air balloon rides.

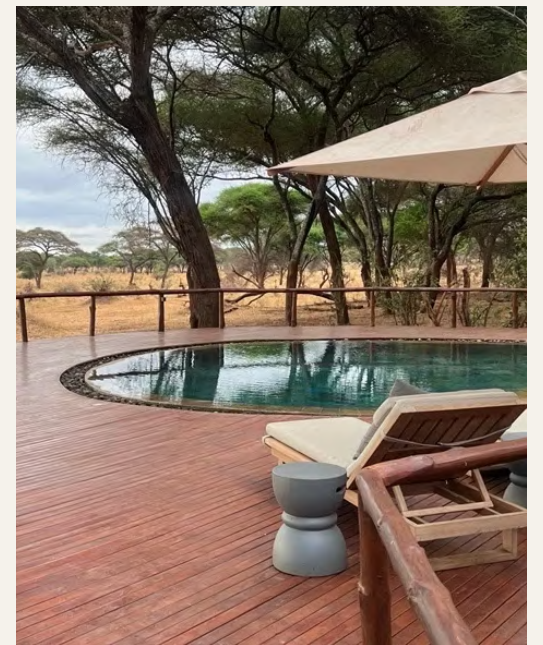
05



*Cloud-scudding views on the communal deck*

The lounge, bar, and dining area are elevated decks built on stilts for optimal animal-spotting pleasure.

06



*A dip in the pool beckons*

At the heart of the camp is a cooling swimming pool under the shade of an ancient baobab tree.

# The Camp



Swala Camp is a sensitively designed hideaway, set deep inside Maasai country in Tarangire National Park, one of Tanzania's most captivating wildernesses. Nature frames the set-up here, with acacia trees forming a canopy over the thatched-roof communal areas and an ancient baobab tree shading the swimming pool, while the 12 spacious guest tents put a luxe spin on bush living with delightful outdoor showers for views to the open sky. Panoramic savannah views are what it's about everywhere else – from the private deck of each guest tent to the elevated bar for sundowners spent gazing at the park's most famous residents: elephants, which often stroll by nonchalantly due to the camp's unobtrusive, unfenced nature.

Beyond Swala Camp soul-stirring scenes await: sculptural termite mounds, swaying grasslands, and the winding Tarangire River, which sustains the area's roll call of wildlife through even the toughest of dry seasons. But the real draw is that guests here don't have to share this with crowds of other safari-goers. If little visited Tarangire National Park is the hidden gem of northern Tanzania, then Swala Camp is its crowning glory.

*Style meets comfort in the interiors*



*"Iconic acacia trees form a natural canopy over the sensitively built camp."*



*The camp's seamless traditional design*

# The Camp



## CLASSIC SAFARI TENTS

Equal parts romantic and thrilling, there's surely nothing better than sleeping under canvas with the sounds of the bush as nature's white noise.

## STARGAZING DECK

Guests gather at this elevated platform for dinners under the stars or simply to spot the constellations in the clear and inky-dark Tanzanian heavens.

## WATERING HOLE

Elephants and impala drinking at the nearby watering hole are a common sight, seen from the main area of the camp and some of the tents.

## FEASTS IN THE WILD

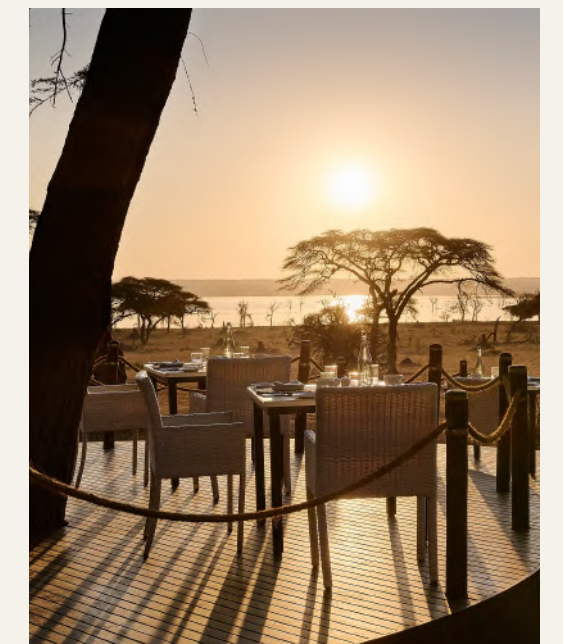
In a secluded clearing illuminated by a log fire chefs serve traditional Swahili fare for a memorable evening feast under the African night sky.

## SWIMMING POOL

Located below an ancient baobab tree, the turquoise slice of swimming pool is not only a place to cool down when the temperatures rise but also a unique spot for watching any passing wildlife.

## BUSH BOUTIQUE

The curated selection of African-crafted items in the on-site Bush Boutique means guests can take home more than just memories from this incredible place.



CLOCKWISE FROM LEFT

*Elephants en route to the watering hole*

*The bar is set on an elevated platform*

*Sunset over the rolling savannah*

# The Camp



*Seats with an epic view*

*The camp lights up as night falls*

GPS Coordinates	GPS 04° 07' 48.4" S, 35° 57' 11.9" E
Open Year Round	Closed during April and May
Number of Rooms	12
Maximum Number of Guests	26
Child Policy	Children aged 6 and over are welcome. Children under 15 must share with an adult
Guide/Pilot Accommodation	Yes
Wheelchair Accessible	No
Power Supply	Generator, solar plant and battery systems
WiFi Available	Yes, in all areas
Binoculars Provided	Yes; Leica binoculars provided for every guest
Camp Fenced	No
Credit Cards Accepted	Visa, MasterCard
Currencies Accepted	USD, Pound, Euro, and Tanzanian Shillings
Swimming Pool	Yes

# The Tents



Tanzanian artefacts and richly patterned textiles root the 12 spacious tents at Swala Camp in their spectacular savannah surroundings. While old-fashioned canvas, mosquito-netting, and the chance to shower outdoors recall the Golden Age of safari, chic contemporary furnishings and amenities give a 21st-century edge. Each tent has views over the sweeping plains, all the better to see the constant spectacle of wildlife.

*A double vanity in the ensuite bathroom*

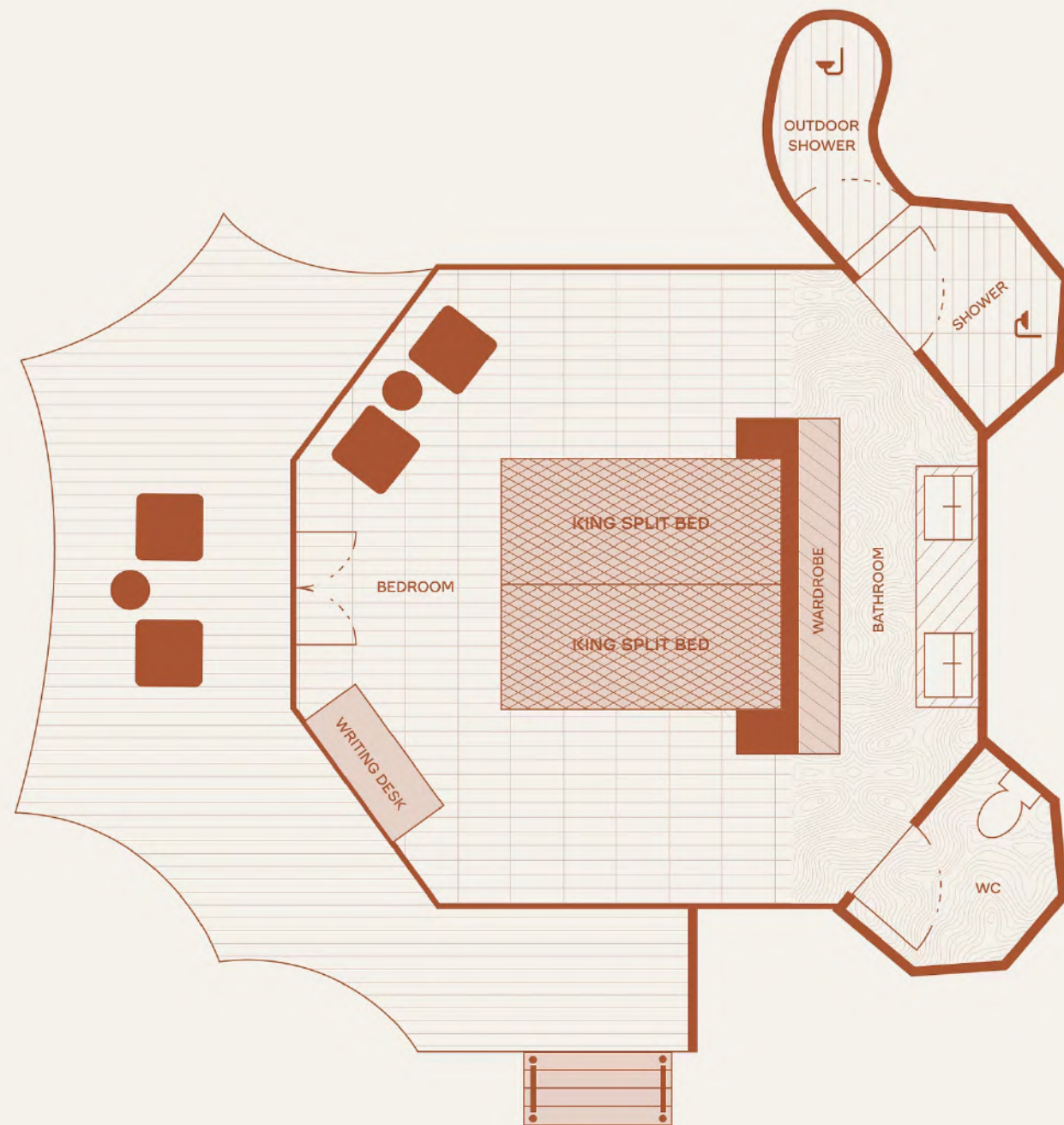


*"The classic-luxe design of Swala Camp reimagines the Golden Age of safari with a modern edge."*



*Billowing curtains give a romantic feel*

# The Tents



## LUXURY GUEST TENT | SLEEPS 2 | 42 SQM

These well-appointed open-plan tents are accessed via double glass doors and have solid walls separating bedroom and bathroom. Each has a king-size bed, ensuite bathroom, an additional outdoor shower, and a private deck with dramatic views.

Room Size	42m2
Bed Configuration (King or Twin)	All rooms can be converted to a king or twins
Triple Rooms Available	Yes; subject to availability
Mini Bar	No
Tea and Coffee Station	No
Air Conditioning	No
Overhead Fan	Yes
Mosquito Net	Yes
Plug Type	Type G Plus, USB and USB Type C
Bath	No
Indoor Shower	Yes
Outdoor Shower	Yes
Hairdryer	Yes



*The indoor-outdoor dining area makes for unforgettable meals*

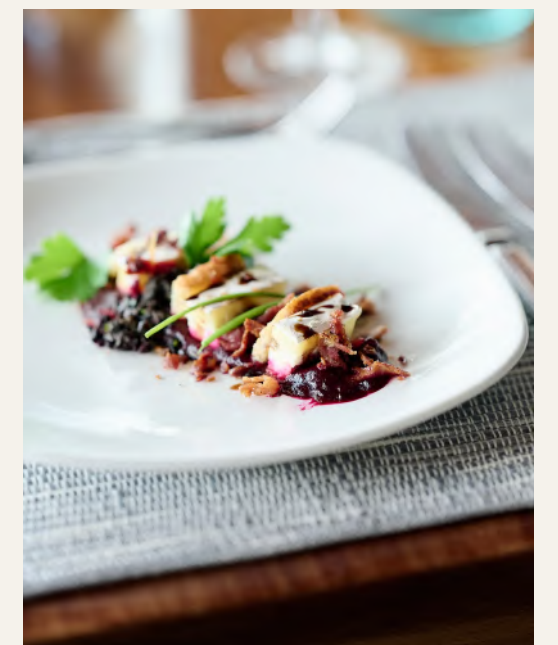
# Food & Drink



The nimble bush kitchen team at Swala Camp serve up global favorites with a local twist, from morning omelettes to herby soups, zesty salads, grilled meats, stews and pasta dishes. The slow-braised oxtail served with magugu, a renowned local aromatic rice, is a particular highlight. The unique outdoor setting – on an elevated deck built around a majestic old baobab tree – makes every dining experience even more memorable; not to mention the cocktails sipped around the crackling campfire or at the panoramic circular bar. As with all A&K Sanctuary lodges and camps, food and drink is included.

- A continental or English breakfast is served in camp before your morning game drive.
- Lunch is enjoyed back at the camp or picnic-style in the bush if you're out game-spotting.
- Sundowners are a delightful daily ritual, followed by a three-course dinner in camp, expertly assembled from fresh, locally sourced, seasonal ingredients.
- Private bush-dining experiences can be arranged on request.

*Dishes are elegantly presented*



# Camp Location



Picture a quintessential East African safari scene – rolling savannah dotted with acacias, baobabs and termite mounds – and you’ve got Tarangire National Park. Yet this sublime wild wonder in northern Tanzania is often overlooked on the country’s park circuit. This is even more surprising when its abundant and diverse range of wildlife is considered. During the dry season its rivers and marshlands sustain the highest concentration of mammals in the country – including elephants, big cats, wild dogs, buffaloes, kudu, and more than 500 species of bird.

When game from far and wide gathers at the park’s water sources, it provides the backdrop for some of nature’s most dramatic encounters. Tarangire even has

its own ‘small migration’, which usually starts in June when herds of wildebeest and zebra enter the park from the Maasai steppes and slowly make their way south, before looping back up north by the start of the ‘small rains’ in November and leaving the park by January.

Tucked away in a secluded section of the park and yet slap-bang in the middle of all the natural drama, Swala Camp feels like an undiscovered secret, where elephant and impala can be seen drinking at the nearby watering hole and the soundtrack of birdsong provides a soothing wake-up call in the classic safari tents.

*Swala Camp is in Maasai country*



*The landscape is dotted with termite mounds and acacia trees*

# Getting There



*Some of the resident elephants are known by name*



Arusha Airport to Kuro Airstrip

30-minute flight



Kuro Airstrip to the Camp / Arusha to the Camp / Kilimanjaro to the  
Camp

1-hour drive / 5-hour drive / 6-hour drive

Please note, luggage restriction for light aircraft is 20kg/44lbs per person in a soft-sided bag,  
including hand-luggage.

# Experiences



As well as thrilling game drives to spot iconic African animals – from mighty tusked elephants to spiral-horned kudu via leopards dangling from the trees, perhaps – Swala Camp has a range of outstanding wildlife viewing opportunities. Expert guides lead walking safaris amid the unique savannah landscape and, come nightfall, after-dark adventures to spot nocturnal creatures. There's also the prospect of watching the sun rise over the plains from a hot-air balloon, followed by a champagne-flavoured breakfast picnic as part of the bush dining offering. But even back at camp, there's never a dull moment, with resident herds of elephants and impala regularly visiting the watering hole.



*A big cat is always a thrilling sight*

## GAME DRIVES

Expert-led game drives in the early morning and late afternoon take guests deep into the exceptionally biodiverse habitat of Tarangire National Park, where relatively fewer crowds than in the country's other parks make for an authentic safari experience.



*Guides seek out nocturnal species*

## NIGHT DRIVES

Swala Camp's brilliant guides once again impart their incredible knowledge about the park and its residents great and small, using specialised lighting to reveal an otherwise unseen world of nocturnal animal magic.



*Explore by foot on a walking safari*

## WALKING SAFARIS

Swala is one of the few camps in northern Tanzania where it's possible to stroll in the African wilderness; guided walks are therefore not merely possible but strongly recommended (season dependent).



*Enjoy a giraffe's-eye view in a hot-air balloon*

## HOT-AIR BALLOONING

The blurry-eyed pre-dawn wake-up is infinitely worth it to witness the landscape of the Tarangire National Park take shape in the first rays of morning sunshine as you float serenely over it in a hot-air balloon.

# Wildlife & Nature

Tarangire National Park is renowned for the large herds of elephants that congregate under its distinctive baobab trees. Guests will also spot plenty of antelope (“swala” in Swahili, giving the camp its name), which gather close to camp at night, seeking safety from after-dark predators. Of course those predators are here in abundance too: lions, leopards, cheetahs, hyenas and wild dogs. And as well as antelope, they hunt waterbuck, oryx and spiral-horned kudu. Dazzles of zebra and towers of giraffe also graze Tarangire’s rolling savannah.

Equally eye-catching are the 500-plus bird species that call the area home – the fact that 150 of these have been spotted at Swala Camp reflects the park’s rich biodiversity. Keen twitchers should look out for the romantically named yellow-collared lovebirds, which are a common sight in the trees along the Tarangire River. Raptors such as the black-chested snake eagle also glide through the park’s skies.

*A lion surveys its territory from on high*



*Swala Camp has many animal visitors*

# Your Swala Camp Safari



*Tarangire National Park is famous for its elephant herds*

Days at Swala Camp deliver pulse-quickening adventure as well as serene moments to simply soak up the incredible nature all around. The camp's expert team of guides and support staff cleverly choreograph every detail – from action-packed morning game drives to delicious feasts around a campfire in the bush.

#### **A TYPICAL DAY MIGHT INCLUDE:**

- Wake-Up Call - Enjoy a tea or coffee on your own deck as the soft morning light illuminates the savannah.
- Breakfast - A fresh, hearty breakfast served at the camp, as animals amble past on their way to the watering hole.
- Morning Activity - Set out with binoculars primed to spot giraffe, impala, zebra, big cats and a variety of birdlife.
- Lunch - Return to the camp for a delicious lunch of safari-style dishes.
- Afternoon Activity - Another opportunity to explore with the expert guides.
- Drinks and Dinner - The moment to sit back and swap stories of the day's adventures over cocktails and a three-course dinner.

# The Details



## HONEYMOON, ANNIVERSARIES & SPECIAL OCCASIONS

Romance and luxury are woven into each of our stays, and our Swala Camp team adds an extra sprinkling of magic when it comes to special occasions. From a bespoke honeymoon cocktail during sundowners to sparkling wine in guests' tent on the night before departure, the team creates special experiences that celebrate a visit to the unique Tanzanian setting.

## FAMILIES WITH CHILDREN

Children aged 6 years old and above are welcome to Swala Camp.

## INCLUSIONS

- All meals, non-alcoholic and alcoholic beverages (including premium brands)
- Return transfers from/to Kuro Airstrip
- Game viewing activities including: game drives
- Emergency medical evacuation
- Laundry services

## EXCLUSIONS

- Park and concession fees
- International and domestic flights, landing fees
- Road transfers to and from other camps and lodges
- Travel insurance, boutique purchases, gratuities, and all other items of a personal nature
- Additional activities not listed



*Sundowners in the bush round off the day*



*The raised fire pit deck has panoramic views*

# Travel Tips



## WHAT TO PACK

Clothing should be cool and comfortable; and colours should blend in with nature as much as possible. Greens, browns and khaki coloured clothing are advisable for safaris. We suggest long sleeves and long trousers for morning and evenings due to mosquitoes; and a fleece, sweater or warm jacket for morning and evening game drives. Sturdy and comfortable shoes are essential. A complimentary overnight laundry service is offered in the camp.

Accessories: Sunscreen, sunglasses and hats are essential. Binoculars and good cameras are an absolute must. The camp provides a torch as well as complimentary mosquito repellent and toiletries.

## HEALTH

Please discuss health precautions for your travel itinerary with a qualified health professional at least six weeks before departure. We also advise all travellers to take precautions against malaria and we recommend speaking to your GP or personal physician four to six weeks before departure. Yellow fever vaccination is required for guests travelling to Tanzania.

## MONEY & CREDIT CARDS

All extras can be paid for with Visa, MasterCard, American Express and traveller's cheques. US dollars, British pounds, Euros are also accepted; however, change will be given in the local currency.

## GRATUITY GUIDELINES

Tipping and gratuities remain entirely at your discretion.

*A canvas tent at Swala Camp*



# Climate



While it's impossible to predict the weather, guests might find it helpful to learn how a visit to Swala Camp might differ from one month to the next: from the secret perks of the rainy season to the best time to explore on foot, or on night drives.



*The lush landscape of the green season*

## **JANUARY–MARCH**

The landscapes of Tarangire National Park are vibrant in the green season, and there are excellent opportunities for birdwatching. Fewer tourists allow for intimate wildlife encounters and peaceful game drives. Note that the camp is closed in April and May, reopening in June.



*Elephants at the watering hole*

## **JUNE–OCTOBER**

Experience the dry season in Tarangire National Park, a time when wildlife congregates around water sources. Game viewing is exceptional, with lots of concentrated animal activity, and interactions between predators and prey a common sight. Night drives are recommended at this time of year.



*Dramatic skies over Tarangire National Park*

## **NOVEMBER–DECEMBER**

The green season begins, and the scenery is lush and vibrant. Lower tourist numbers make for a more peaceful experience in a rejuvenated environment. As migratory species begin to arrive, birdwatching is excellent. Dramatic thunderstorms create great photo opportunities.

# A&K Philanthropy Initiatives in Tanzania



*Community connection is at the heart of A&K Philanthropy*

## **JOURNEYS WITH PURPOSE**

The A&K Philanthropy nonprofit network now spans 24 countries on all seven continents, positively impacting hundreds of thousands of lives and helping preserve some of the world's most precious ecosystems. Our initiatives focus on education, enterprise, health and environment, aiming to support and empower local communities to facilitate the protection of their surroundings, and to ensure that the people in the places where we travel are also benefitting directly from tourism.

## **SAFE WATER FOR SCHOOLS**

Since 2017, A&K Philanthropy has partnered with LifeStraw, makers of an accessible water filtering and purification device, to provide safe water to thousands of children in India, Kenya, Tanzania, Uganda, Vietnam and Zambia. AKP has funded and distributed 829 filtration systems in schools, with each filter serving up to 100 children for a period of five years. Guests in the areas where LifeStraw has been installed can see firsthand how this simple device makes a great impact on the community's overall health and wellbeing.

## **EDUCATION ON THE EDGE OF TANZANIA'S WILDERNESS**

Children who attend Gijedabung and Mwikantsi primary schools in Tanzania share their beautiful surroundings with the animals of Tarangire National Park in which the schools are located. Proximity to wild animals can be challenging for local communities, due to the impact on livestock and crops. Part of AKP's educational work is to find ways to support communities to live alongside wildlife so that conservation of the region's special megafauna can continue. At these schools AKP provided new classrooms, educational materials, accommodation for teachers and solar power so that both teachers and students can focus on learning.

# A&K Philanthropy Initiatives in Tanzania



## ILBORU SPECIAL NEEDS EDUCATION UNIT

In 2006, A&K Philanthropy partnered with teaching specialist Loitushui “Loy” and the local community to build the Ilboru Primary School for Children with Special Needs. AKP and Tanzania’s Ministry of Education expanded the primary and opened a secondary school in 2016, and AKP has since updated the school’s kitchen, built a dining hall, constructed a playground and partnered with Bootstrap Africa to build girls’ and boys’ dormitories. In 2024, six classrooms were added to the campus, boosting capacity to 200 students, making it by far the largest school of its kind in the district.

## PROJECT CURE

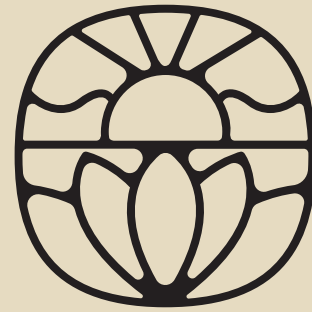
AKP’s global medical assistance program has been created in collaboration with U.S. nonprofit Project C.U.R.E to bring essential medical equipment and healthcare supplies to resource-limited communities. Funded by AKP, containers are filled with donated medical supplies and equipment in the U.S. and shipped overseas to one of our partner facilities in Zambia, Tanzania, Uganda and Cambodia, where the supplies are then distributed to local hospitals, health centers and clinics.

## KAFIKA HOUSE

AKP partnered with Kafika House to provide disabled children in the Tanzanian city of Arusha with a holistic, transformative healthcare facility. Kafika House affords a safe and loving home for children receiving pre- and post-operative care and rehabilitation for surgically correctable disabilities such as cleft lip and palate, clubfoot, skeletal fluorosis, burn scar contractures, masses and osteomyelitis. Children spend an average of three months at Kafika House, all the while learning, playing and receiving the care they need. Guests at Swala Camp are welcome to visit Kafika House for a tour of the facilities and to gain a deeper understanding of the program’s mission.



*Schoolchildren in Tarangire National Park*



A&K SANCTUARY