



CHOBÉ CHILWERO LODGE

AN A&K SANCTUARY



Chobe National Park, Botswana



The Pool Suite has its own plunge pool and firepit

An exclusive sanctuary in the heart of Botswana's elephant country

Sublimely luxurious Chobe Chilwero Lodge sits on a hill high above the Chobe River, affording unparalleled panoramic views to the islands and floodplains beyond. Its location bordering Chobe National Park means the ultra-exclusive lodge is in a hotspot of biodiversity and natural beauty that is remarkable even by Botswana's sky-high standards – the world's largest remaining population of African elephants roam the park's plains. Lush, well-tended gardens, a split-level swimming pool and a full-service spa (one of the few in the area) make this feel like a spoiling oasis amid the widescreen wilderness. The cherry on top is the brilliant choice of excursions – from photographic river cruises to day trips to Victoria Falls.

Six Reasons to Choose Chobe Chilwero Lodge



01



Elephants are never far away in Chobe

Big on big game, with the highest concentration of Kalahari elephants - the largest in Africa.

02



Lofty, lush views from the treatment room

Exceptional spa with a treetop treatment room plus a split-level swimming pool with a hydrotherapy bath.

03



Cruising with a difference at sunset

Enjoy serene sundowner and photographic cruises on the Chobe River in specially designed safari boats.

04



Soak up nature from your private deck

Fifteen spacious standalone suites set in lush gardens, each with a private terrace.

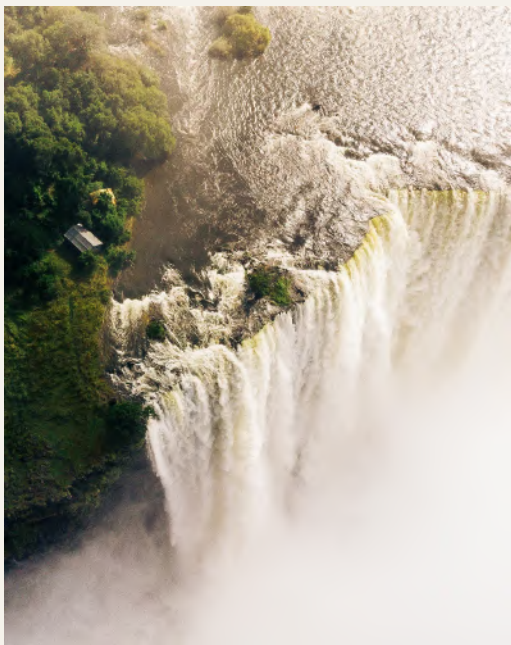
05



Moments of downtime

Great for families with a full program of activities for children and three dedicated two-bedroom family suites.

06



Take in the majesty of Victoria Falls

Within day-tripping distance of the thundering, world-famous Victoria Falls.

The Lodge



There are many reasons why Chobe Chilwero Lodge is one of the most luxurious places to stay around Botswana's Chobe National Park. Its 15 spacious and elegant garden suites are scattered across lush green lawns (the Pool Suite is the one to book for sublime seclusion), while inviting communal spaces include a lounge, library and dining room, each linked to outdoor viewing terraces. There's also a full-service spa, with a treetop treatment room for nature-based therapies, and a split-level swimming pool area with a rejuvenating hydrotherapy pool, plus a well-kitted out gym.

But perhaps the greatest luxury of all is the spectacular setting, flanked by jackalberry and sausage trees, on a hill above the deep-blue waters of the Chobe River, where many of the area's diverse animals gather and which marks the northern boundary of abundant Chobe National Park. Stretching for 4,500 square miles across the plains, swamps and woodland below, the conservation area (the first in the country, set up in 1968) is home to lions, leopards, hippos, crocodiles, giraffes, buffaloes and a thriving 50,000-strong elephant population.

Pizzas are made in a wood-fired oven



"The chic communal spaces invite guests to linger and mingle, with deep-cushioned sofas and original artwork."



Textiles enrich the contemporary decor

The Lodge



SPA

Perhaps fitting in a national park known for its forests of cathedral mopane, the treetop spa treatment room is a wonderfully unique location for rejuvenating facials, restorative massages or body therapies using organic Healing Earth products made from all-natural ingredients powered by African botanicals and minerals.

SWIMMING POOL

The split-level swimming pool area has an indoor spa bath, Vichy showers, hydrotherapy pool and relaxation area. Fitness enthusiasts can enjoy the new, well-equipped gym, featuring a treadmill, rowing machine, exercise bike and weights.

BUSH BOUTIQUE

The curated selection of African-crafted items in the on-site Bush Boutique means guests can take home more than just memories from this extraordinary corner of Botswana – from jewellery and art to safari-chic clothing.

LOUNGE

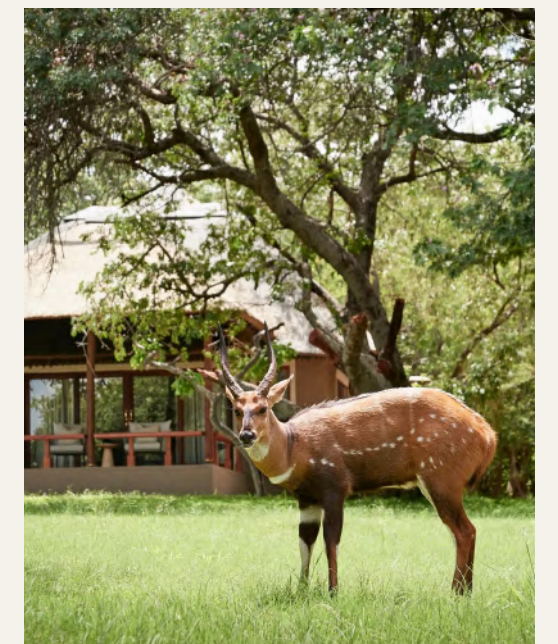
The lounge viewing terrace is a spectacular spot for sunset drinks, as the fiery skies are reflected in the river beyond.

TRADITIONAL DANCERS

Guests get a flavor of the rich local culture of this northeastern corner of Botswana with a traditional performance by dancers from a nearby community.



CLOCKWISE FROM LEFT
"Chilwero" means "high view"
The open-sided bar is a sociable spot
Wildlife on the lodge grounds





Sunset is a magical hour in Botswana
Trees shade the split-level pool

GPS Coordinates	GPS 17° 49’ 40.00” S, 25° 8’ 14.35” E
Open Year Round	Yes
Number of Rooms	14 Suites (3 Family Suites) and 1 Pool Suite
Maximum Number of Guests	36
Child Policy	Children of all ages are welcome. Children under 15 must share with an adult
Guide/Pilot Accommodation	Yes; 1
Wheelchair Accessible	Limited Access
Power Supply	Main grid power with inverter and backup generator
WiFi Available	Yes, in all areas
Binoculars Provided	Yes; Leica binoculars provided for every guest
Lodge Fenced	Yes
Credit Cards Accepted	Visa, MasterCard
Currencies Accepted	USD, Pound, Euro and South African Rands
Swimming Pool	Yes
Spa/Treatment Room	Yes

The Suites



Scattered across Chobe Chilwero's lush grounds are 15 spacious thatched suites, each dressed in a palette of pale sky blues, soft greys and sandy yellows enlivened by patterned textiles and original works of art. It's an elegant foil to the vast, raw wilderness of the surrounding landscape. Each has a private terrace; three have an additional bedroom, making them suitable for families; and the Pool Suite has its own plunge pool.

Freestanding bathtubs call for deep soaks

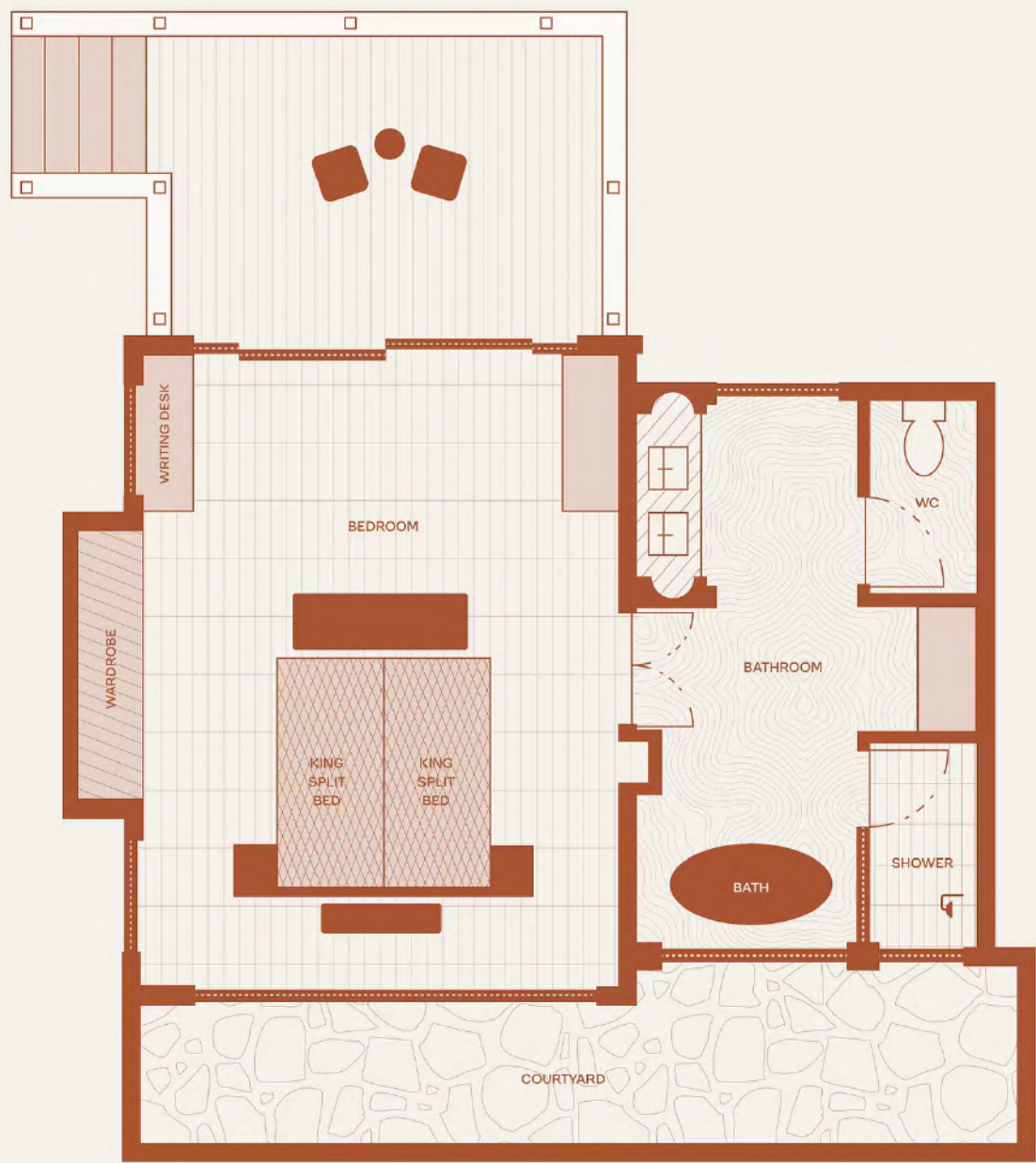


"The elegant thatched suites are tucked away across the lush grounds."



Even the superking-sized bed has a view

The Suites



SUITE | SLEEPS 2 | 85 SQM

Each suite has a superking-sized bed with high-threadcount linens and mosquito net canopies, ensuite bathroom with double vanity, rain shower and freestanding bathtub, plus a private deck.

Room Size	85m2
Bed Configuration (King or Twin)	All rooms can be converted to a king or twins
Triple Rooms Available	Yes; subject to availability
Mini Bar	Yes
Tea and Coffee Station	Yes
Air Conditioning	Yes
Overhead Fan	Yes
Mosquito Net	Yes
Plug Type	Type G Plug, USB and USB Type C
Bath	Yes
Indoor Shower	Yes
Outdoor Shower	No
Hairdryer	Yes

The Family Suites



SUITE | SLEEPS 2 - 4 | 85SQM

Each suite has a superking-sized bed with high-threadcount linens and mosquito net canopies, ensuite bathroom with double vanity, rain shower and freestanding bathtub, plus a private deck. Three of the suites also have an additional adjoining smaller bedroom with twin beds.

Room Size	85m2
Bed Configuration (King or Twin)	All rooms can be converted to a king or twins
Triple Rooms Available	Yes; subject to availability
Mini Bar	Yes
Tea and Coffee Station	Yes
Air Conditioning	Yes
Overhead Fan	Yes
Mosquito Net	Yes
Plug Type	Type G Plug, USB and USB Type C
Bath	Yes
Indoor Shower	Yes
Outdoor Shower	No
Hairdryer	Yes

The Pool Suite



Room Size	85m2
Bed Configuration (King or Twin)	All rooms can be converted to a king or twins
Triple Rooms Available	No
Mini Bar	Yes
Tea and Coffee Station	Yes
Air Conditioning	Yes
Overhead Fan	Yes
Mosquito Net	Yes
Plug Type	Type G Plug, USB and USB Type C
Bath	Yes
Indoor Shower	Yes
Outdoor Shower	No
Hairdryer	Yes
Plunge Pool	Yes



POOL SUITE | SLEEPS 2 | 85 SQM

As well as a superking-sized bed and an ensuite bathroom with freestanding bathtub, the Pool Suite features a private garden and large decked terrace with its own plunge pool, fire pit, and shaded daybed area.

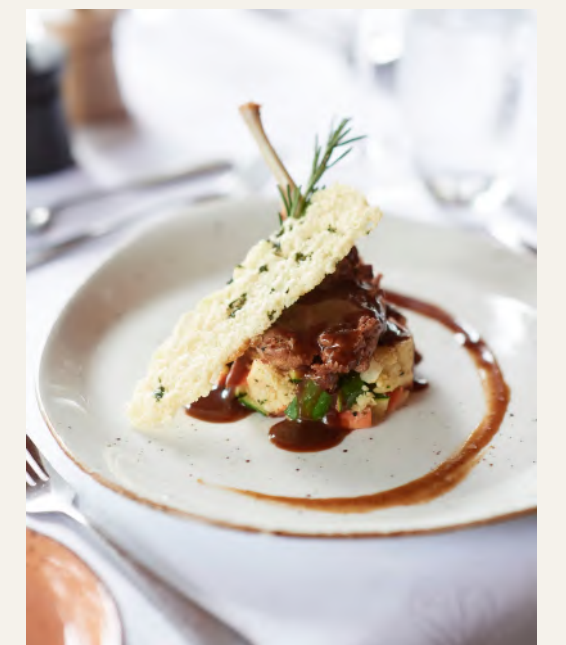
Food & Drink



Chobe Chilwero Lodge is known for its superb culinary offering, thanks to the excellent kitchen team who combine African and Western influences in dishes such as pizzas baked in a traditional wood-fired oven, grilled kingklip fish, Cape mussels and green lamb curry with fragrant rice. Guests can enjoy sundowners in breathtaking bush locations or, for those lingering in the lodge, the lounge terrace is a standout spot for sunset too. Dinners are served in the outdoor dining area beside the campfire beneath skies pin-pricked with stars, while private dinners can be arranged on guests' private decks or beside the pool.

- A continental breakfast is served at the lodge before the morning game drive.
- Back at the lodge, guests unwind over a leisurely lunch of African-meets-Western flavors.
- On afternoon and evening game drives, stops are made at specially selected spots for classic sundowners.
- Rounding off each day are pre-dinner drinks – perhaps a cocktail in the lounge or in a cosy corner of the lodge – followed by a gourmet dinner played out amid the glow of lanterns beside the campfire.

The lodge is known for its sublime food



Dinner is served by lantern light as the skies turn lilac

Lodge Location



Originally inhabited by the Bushmen, Chobe was protected as a national park in 1968 (the first in Botswana) and as a result has retained its remarkably diverse wildlife. Set in the far north of the country, it is known as the “Land of Giants”, due to its thriving population of Kalahari elephants – the largest of the African elephants. Some 50,000 of these iconic creatures – the highest concentration on the continent – roam the incredibly varied habitat encompassing savannah, woodland, riverbank and floodplain.

The “Chilwero” in Chobe Chilwero Lodge means “high view”, and the lodge’s elevated position on the edge of the eastern region of the park provides mesmerizing views of the sapphire-blue Chobe River and beyond. Sable and roan antelopes are common sights due to

their abundance in the park. The lush riverfront region is home to giraffe, wild dog, lion, sable and Cape buffalo and is the only place in Botswana where puku antelope can be spotted. In the savannah, zebra, wildebeest, warthog, impala and kudu are plentiful. Key species (apart from those hulking elephants) include: buffalo, lion, leopard, giraffe, crocodile, impala, waterbuck, zebra, hyena, and a large variety of birdlife. A 25-minute drive away is the world’s only quadripoint where Namibia, Botswana, Zimbabwe and Zambia all meet; Victoria Falls is just a 90-minute drive away – although it may have taken David Livingstone, who was seen in the area on his way there in the 1850s, a little longer.

A motorised skiff excursion



Panoramic views over the floodplains of Chobe

Getting There



Maun Airport to Kasane Airport / Livingstone Airport to Kasane
Airport

1-hour 30-minute flight / 25-minute flight



Kasane Airport to the Lodge

10-minute drive

Please note, luggage restriction for light aircraft is 20kg/44lbs per person in a soft-sided bag,
including hand-luggage.

Experiences



There's the spoiling choice of exploring on land and on water at Chobe Chilwero Lodge, given the superb location near a river on the edge of the national park. Twice-daily game drives with expert guides take in all creatures great and small in this famously biodiverse corner of Botswana. Excursions by motorized skiff provide another perspective on the landscape and its wildlife. The high drama of Victoria Falls is just a 90-minute drive away, and sundowner cruises are a lovely way to wind down at the end of the day while still ticking off animal sightings. Or there's always a treatment in the treetop spa back at base.



Front-row views of Botswana's incredible wildlife

GAME DRIVES

Expert-led game drives in the early morning and late afternoon take guests into the thick of this unique habitat in open-sided 4x4 vehicles. It's possible to spot wildlife of every shape and size, from a rosy-throated longclaw to a full-maned lion.



The skiffs are specifically designed for nature-spotting

SUNDOWNER CRUISES

Wading elephants and grazing buffalo add an extra touch of excitement to serene sundowner cruises aboard one of the lodge's specially designed skiffs on the Chobe River. There are few better ways to end a day in this sublime Botswana sanctuary.



Eyes peeled at all times for lurking predators

PHOTOGRAPHIC SAFARI CRUISES

Chobe Chilwero Lodge's double-decker safari boat can accommodate up to 18, with 360-degree swivel seats for optimal viewing. Keen photographers take note – game-spotting is generally best from the upper deck, while breakfast and lunch are served below.

Experiences



There's the spoiling choice of exploring on land and on water at Chobe Chilwero Lodge, given the superb location near a river on the edge of the national park. Twice-daily game drives with expert guides take in all creatures great and small in this famously biodiverse corner of Botswana. Excursions by motorized skiff provide another perspective on the landscape and its wildlife. The high drama of Victoria Falls is just a 90-minute drive away, and sundowner cruises are a lovely way to wind down at the end of the day while still ticking off animal sightings. Or there's always a treatment in the treetop spa back at base.



River excursions are thrilling at Chobe Chilwero

FISHING

Chobe River teems with bream and tiger fish, particularly between May and August, making it an ideal spot for catch-and-release fishing. Staff at Chobe Chilwero Lodge will be happy to assist in making arrangements with local partners. Note this incurs an additional cost.



Victoria Falls: a day trip to remember

VICTORIA FALLS EXCURSION

Chobe Chilwero is only 90 minutes' drive from Mosi-oa-Tunya – The Smoke That Thunders – otherwise known as Victoria Falls: the largest curtain of falling water on earth. Staff at Chobe Chilwero Lodge will be happy to assist in making arrangements for a day trip with local partners. Note this incurs an additional cost.

Wildlife & Nature

The dream African safari tableau plays out in Chobe National Park on a daily basis. The thriving 50,000-strong elephant population is the highest concentration in Africa, and the spectacular pachyderms can be seen in all manner of settings; swimming across the river, perhaps, or slowly stomping across the plains. The park is also home to vibrant herds of sable and roan antelopes, while the lush riverfront region is that habitat of giraffe, wild dog, lion, sable and Cape buffalo as well as being the only place in Botswana where puku antelope can be spotted. In the savannah, zebra, wildebeest, warthog, impala and kudu are plentiful.

Keen birdwatchers will have the iconic African fish eagle and colorful migratory bee-eater on their spotting list (the latter's numbers increase from September onwards), while river cruises offer the possibility of spying wetland species such as skimmers, spoonbills and slaty egrets.

Spot bush babies clinging to the trees



Elephants always have the right of way in Botswana

Your Chobe Chilwero Lodge Safari



The action plays out on water and land in Chobe National Park

Days at Chobe Chilwero Lodge deliver pulse-quickening adventure as well as serene moments to simply soak up the incredible nature all around. The lodge's expert team of guides and support staff cleverly choreograph every detail – from action-packed morning game drives to post-dinner drinks by the campfire.

A TYPICAL DAY MIGHT INCLUDE:

- Wake-Up Call - Enjoy a tea or coffee on your own deck as the surrounding bush comes to life.
- Breakfast - A fresh, hearty breakfast is served at the lodge, with birdsong echoing from the trees.
- Morning Activity - Set out with binoculars primed to spot some of Chobe's famous elephants, and perhaps predators and a rare bird.
- Lunch - Return to the lodge for a delicious lunch of safari-style dishes.
- Afternoon Activity - Another opportunity to explore with the expert guides.
- Drinks and Dinner - The moment to sit back and swap stories of the day's adventures over cocktails and a three-course dinner beneath the stars.

The Details



HONEYMOON, ANNIVERSARIES & SPECIAL OCCASIONS

Romance and luxury are woven into each of our stays, but the team at Chobe Chilwero Lodge adds an extra sprinkling of magic when it comes to special occasions. From a private candle-lit dinner by the pool and a romantic bath in guests' room to private bush sundowners (vehicle availability dependent), the team creates once-in-a-lifetime experiences that celebrate a visit to the widescreen wonder of northern Botswana.

FAMILIES WITH CHILDREN

Chobe Chilwero Lodge welcomes families. Guides and staff, many of whom are parents themselves, love children, and love to create unforgettable safari adventures for all ages. The lodge is secured with a surrounding fence, ensuring a safe environment, while offering an array of engaging programs and activities tailored to keep young minds entertained and curious. Kids can join guided walking safaris within the lodge grounds, collecting pods, leaves, and seeds while learning about tree identification. The excitement continues with a thrilling "Safari Hunt," and croquet on the lawn. Aspiring young chefs will delight in making their own pizzas under the guidance of our expert chefs, and families can embark on shortened game drives, ensuring a fun and age-appropriate experience for all.

INCLUSIONS

- All meals, non-alcoholic and alcoholic beverages (including premium brands)
- Return transfers from/to Kasane Airport
- Game viewing activities including game drives, and boating
- Emergency medical evacuation
- Laundry services
- Park fees

EXCLUSIONS

- International and domestic flights, landing fees
- Road transfers to and from other camps and lodges
- Travel insurance, boutique purchases, spa treatments, gratuities, and all other items of a personal nature
- Additional activities not listed



Breakfast is served with verdant views



Chobe National Park has a thriving elephant population

Travel Tips



WHAT TO PACK

Clothing should be cool and comfortable; and colours should blend in with nature as much as possible. A fleece, sweater or warm jacket is advisable for morning and evening game drives. Long sleeves and long trousers for mornings and evenings due to mosquitoes. Sturdy and comfortable shoes are essential. A complimentary overnight laundry service is offered in the lodge.

Accessories: Sunscreen, sunglasses and hats are essential. Binoculars and good cameras are an absolute must. The lodge provides a torch as well as complimentary mosquito repellent and toiletries.

HEALTH

Please discuss health precautions for your travel itinerary with a qualified health professional at least six weeks before departure. Those passing through countries which have been declared yellow-fever-infected areas must provide a Yellow Card, an international vaccination certificate, upon arrival in Botswana.

MONEY & CREDIT CARDS

All extras can be paid for with Visa, Mastercard, and traveller’s cheques. US dollars, British pounds, Euros and South African rands are also accepted; however, change will be given in the local currency.

GRATUITY GUIDELINES

Tipping and gratuities remain entirely at your discretion.

Retreat to the spa for pampering downtime





While it's impossible to predict the weather, guests might find it helpful to learn how a visit to Chobe Chilwero Lodge could differ from one month to the next: from the secret perks of the rainy season to the optimum time for spectacular sunsets and stalking predators.



Chobe's bird species include lilac-breasted rollers

JANUARY–MARCH

The start of the year is peak breeding time for migrating bird species when they're drawn to the newly fruiting sour plum and marula trees in the area. Owing to spawning season, fishing is not allowed. Lower visitor numbers mean guests visiting now get a hyper-personalised experience.



Sunsets are particularly sensational in this season

APRIL–JUNE

The shift from wet season to dry season delivers mild temperatures and lush green vegetation, ideal for photography. Wildlife moves to more permanent water sources and large herds of elephants move across Chobe National Park – but visitor numbers remain lower. In May the migratory birds start to leave and sunsets are at their picturesque best.



Herds make their way into the water

JULY–OCTOBER

The ideal season for guests on their first African trip. Wildlife concentrates around remaining water sources making for ideal game viewing; spot dazzles of zebra along the river banks where elephants spend much of their time drinking up to 200 litres of water per day. Riverboat trips are particularly rewarding.



Sundowners in an extraordinary setting

NOVEMBER–DECEMBER

The start of the rainy season when dramatic thunderstorms make for excellent photography but have minimal impact on daily activities. As these are the birthing months for many herbivores, predator action is increased.



JOURNEYS WITH PURPOSE

The A&K Philanthropy nonprofit network now spans 24 countries on all seven continents, positively impacting hundreds of thousands of lives and helping preserve some of the world's most precious ecosystems. Our initiatives focus on education, enterprise, health and environment, aiming to support and empower local communities to facilitate the protection of their surroundings, and to ensure that the people in the places where we travel are also benefitting directly from tourism.

"As pioneers of the community-first approach to conservation, we continue to celebrate travel as a force for good."



A&K SANCTUARY