

MADIKWE HILLS

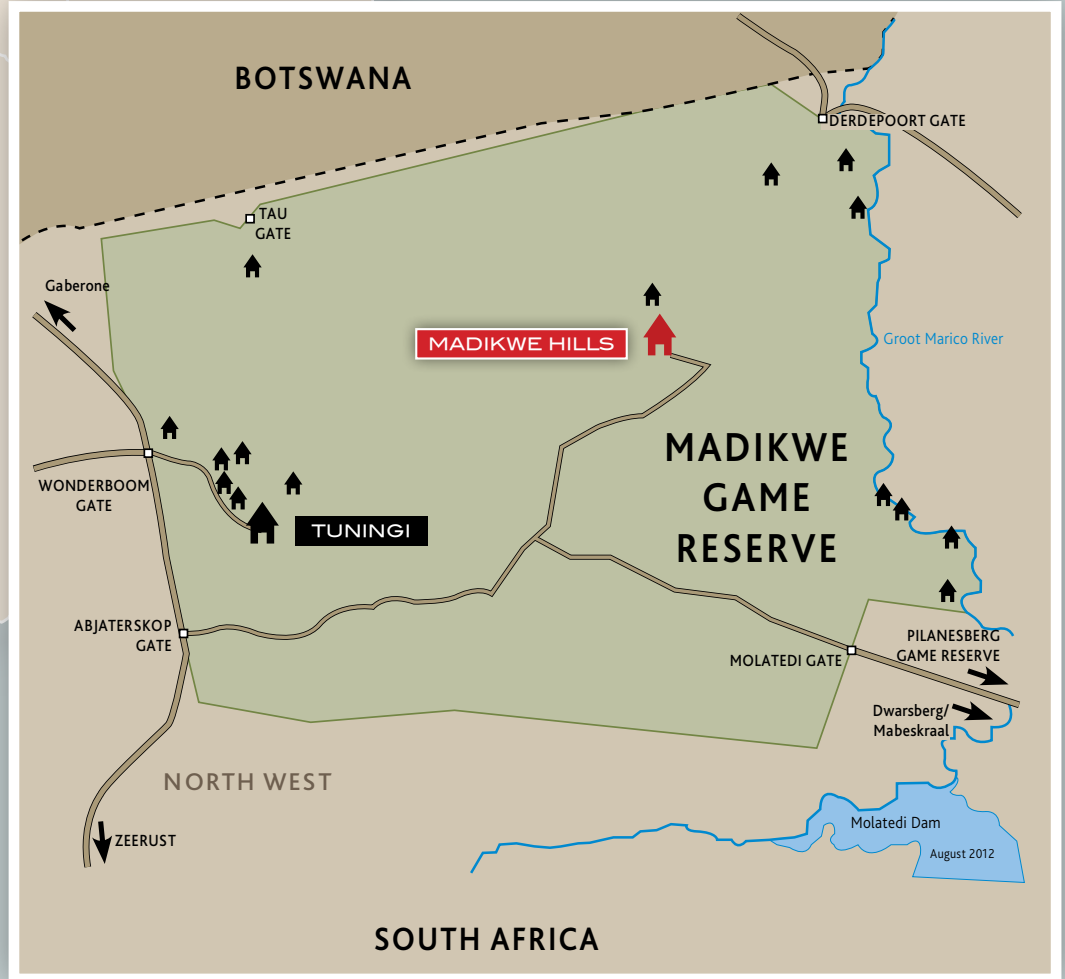
PRIVATE GAME LODGE



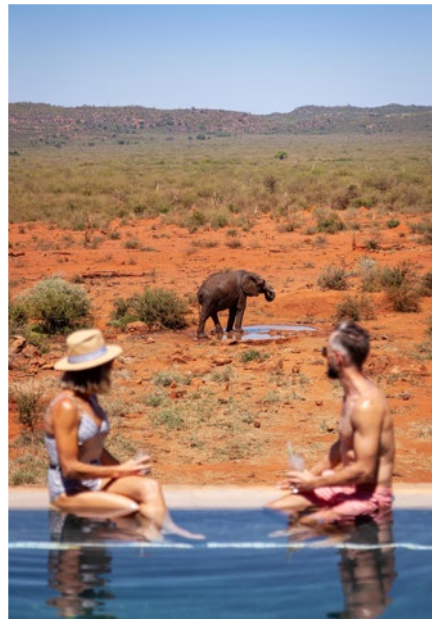
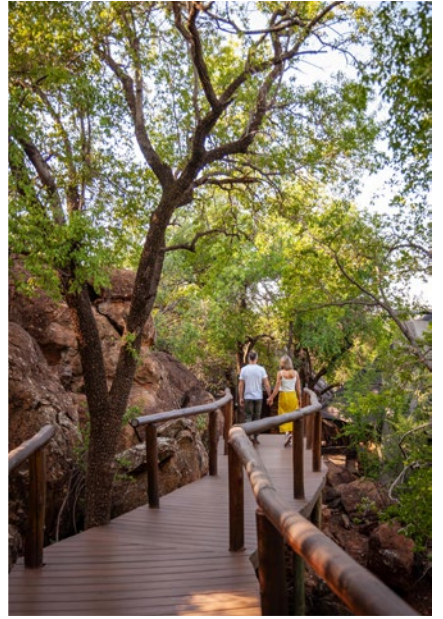
MADIKWE HILLS PRIVATE GAME RESERVE | NORTH-WEST PROVINCE

www.madikwehills.com

Seasons in Africa
ADVENTURES • HOTELS • LODGES



PLEASE NOTE: Drones are **STRICTLY PROHIBITED** in the Madikwe Game Reserve, failure to comply with this rule will result in a heavy fine or arrest by reserve management.



MADIKWE HILLS

PRIVATE GAME LODGE



Traversing over 75 000 hectares, Madikwe Hills Private Game Lodge is situated on a hill, in the heart of the malaria-free Madikwe Game Reserve.

Ingeniously set amongst boulders and age-old Tamboti trees, the lodge offers visitors the utmost in luxury and hospitality, where you will find yourself enchanted by a world of intrigue and majestic beauty.



LOCATION

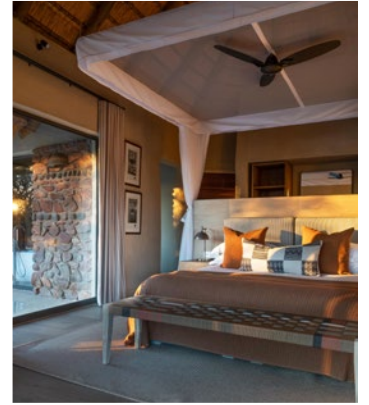
- Madikwe Game Reserve – North West Province.
- 4½ hours from Johannesburg/Pretoria.

ACCOMMODATION

MAIN CAMP

- 10 Newly renovated, spacious glass fronted suites (±150m² each)
- Uninterrupted views of the African bush
- Private deck with plunge pool
- Air-conditioning
- Fans
- Fireplaces
- Fully stocked mini-bar
- Coffee machine
- Indoor and outdoor showers
- Mosquito nets
- Private lounge
- Complimentary, unlimited Wi-Fi
- Room Safes





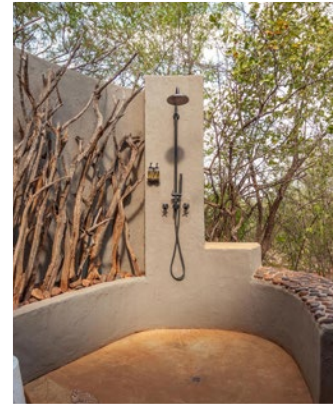


ACCOMMODATION

LITTLE MADIKWE (Family Friendly Camp)

Little Madikwe comprises of a 2 Bedroomed Suite ($\pm 390\text{m}^2$). An additional 2 Luxury Suites ($\pm 150\text{m}^2$) can be reserved to form a completely private camp accommodating up to 8 guests.

- Private deck and swimming pool
- Air-conditioning and fans
- Fireplaces
- Fully stocked mini-bar
- Coffee machine
- Indoor and outdoor showers
- Mosquito nets
- Private lounge, verandah and dining room
- Private kitchen with personal chef – set your own meal time
- Private game drive vehicle with field guide and tracker – set your own game drive time
- Villa attendant/child minder
- Entertainment centre
- Satellite television
- Various children's games
- Small library
- Complimentary, unlimited Wi-Fi
- Suite Safe



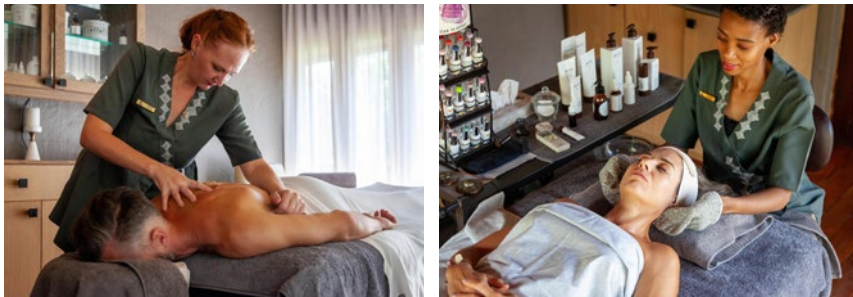


FACILITIES

- Lounge
- Dining Room
- Bar
- Wine Cellar
- Local wines
- Terraced viewing deck with umbrellas overlooking waterhole
- Swimming Pool
- Cosy TV room with satellite TV and a selection of books
- Traditional Boma
- Complimentary, unlimited Wi-Fi
- **CURIO SHOP**
Well stocked with books, clothing, safari gear, handmade knives, shoes, bags, jewellery, postcards and local arts & crafts. More than half of the items in the curio shop comes from Community Projects, helping and benefiting the communities who make these beautiful pieces of art.







WELLNESS

Set the mind at ease and embrace the energy of the bush. Experience the soul of Africa, not just through an emotional, but also a physical wellness. Our range of superb spa treatments will leave you energized and refreshed.

SPA TREATMENTS

THERAPEUTIC MESSAGES		BODY WRAP	
A choice of pampering massages: – Swedish	30min	Full Body	120min
– Aromatherapy	60min	HANDS & FEET	
– Deep Tissue	90min	Express Manicure	30min
– African Scalp & Neck		Standard Manicure	60min
– Hot Stone		Luxury Manicure	90min
FACIAL EXPERIENCES		Express Pedicure	30min
Standard Facial	60min	Standard Pedicure	60min
Luxury Facial	90min	Luxury Pedicure	90min

FULLY EQUIPPED GYM

The fully equipped air-conditioned gym at Madikwe Hills, with treadmill, spinning bike, rowing machine, elliptical trainer, cross-cable machine, dumbbells and barbells and aerobic mats, allows guests to keep up with their fitness regime, or a place to release the guilt built up after indulging in mouth-watering delights.



WEDDINGS

There is something about a wedding in the heart of the African bushveld that cannot be forsaken! Small intimate weddings from two up to twenty-four guests are catered for at Madikwe Hills, and we pride ourselves on our meticulous attention to detail.

At Madikwe Hills, we like to keep things simple, but exceptional...

THIS PACKAGE INCLUDES:

- Ceremony in the heart of the bushveld / main deck of the lodge.
- Witnesses at the ceremony (lodge staff).
- South African Methode Cap Classique sparkling wine for the couple.
- Single layer wedding cake with decoration of choice.
- 30 minute massage for bride and groom.
- Transportation of Bridal couple from lodge to ceremony if in the bush.
- Traditional Tswana dancers to perform at the ceremony.
- Assistance with make-up.
- Wedding turn-down.
- Wedding gift for the bridal couple, courtesy of Madikwe Hills.
- A bouquet and bunch of Local flowers of your choice.

THIS PACKAGE EXCLUDES:

(To be quoted on request)

- PREPARATION AND PROCESSING OF ALL LEGAL DOCUMENTS.
- The Minister and his/her travel
- Photographer, hairdresser, make-up artist and additional beauty treatments.
- Accommodation.
- All Beverages.
- Flowers of your choice.

LEGALITY OF FOREIGN WEDDINGS IN SOUTH AFRICA

The law in South Africa requires a foreign couple to attend an appointment at the Department of Home Affairs before they can be legally married in South Africa. Since this is quite a cumbersome task for someone on safari, we suggest that you process all legal marriage documents in your home country and enjoy your ceremony on safari in a more traditional way.





ACTIVITIES

Madikwe Game Reserve is about 75 000 hectares of bushland stretching all the way up to the Botswana border, and is one the largest and most popular game reserves in South Africa.



Once farm land, the Reserve has now been restored to its former natural environment with 86 mammals (from mice to elephant), 420 bird species (110 being rare) and 104 tree species. Predominantly grasslands and bushveld, intermingled with lone mountains and rocky outcrops, the Reserve is home to cheetahs, wild dogs, leopards, hyenas, lion, elephant, black & white rhino, buffalo, zebra, giraffe and various antelope.

- Two 3-hour game drives a day (morning and afternoon)
- 'Big 5' game viewing in state-of-the-art game-viewers
- Tea, filter coffee and biscuits on morning game drive
- Drinks and refreshments on afternoon game drive
- Bush breakfasts on request for larger groups





JUNIOR RANGERS & KIDDIES

JUNIOR RANGER PROGRAMME

The Rangers are given "funwork" not "homework", a booklet they can complete before or during the afternoon drive which is marked and each child receives a certificate stating they are a Junior Ranger of Madikwe Hills. This programme can be run for 1 – 2 hours in one day, or if the guests are staying for more than two nights it can be broken up into two days. The fun never stops at Madikwe Hills.

Some of the exciting things on offer for the Juniors while on safari in the Madikwe Hills Game Reserve in South Africa.

- Madikwe Hills Lucky Packet on arrival at the Lodge
- Face Painting - become your favourite safari animal
- Bug Finding
- Create My Tree Artwork
- Treasure Hunt
- Animal Dung Investigation
- Face Mask Painting
- Clay Modelling Class
- Cup Cake Baking





COMMUNITY UPLIFTMENT PROJECT

Forming a joint mission with Madikwe Game Reserve to promote economic and social upliftment, Madikwe Hills Private Game Lodge has taken on a community uplifting project involving **Lesedi Day Care Centre in Rietpan**, a rural village an hour and 45 minutes away and home to some of the staff employed at the lodge.

The Lesedi Day Care Centre has a passionate owner, Regina Senna, who will thrive with financial support as she has already proven herself as a determined woman focused on the welfare of children.

The aim of this project is to assist and support Regina to run her business independently through sustainable income.

View more on this community project by visiting our [website](#)

For further information and to take part in this initiative, please contact Ezelle van Dyk on: ezelle@madikwehills.com

RATES ARE QUOTED

- Inclusive of VAT
- In South African Rands
- Subject to availability

TARIFFS CHANGES

- All tariffs quoted are subject to change, without prior notice, however rates quoted for confirmed bookings will be honoured.

RATES INCLUDE

- Luxury accommodation
- Two game drives per day
- Three meals daily
- Tea / Coffee
- A wide selection of local beverages, house wines & spirits
- High tea canapés & snacks
- Selection of Fruit Juices
- Laundry service
- Road transfers from the Madikwe Airstrip to the lodge
- Optional walking safaris

RATES EXCLUDE

- Curio shop purchases
- Cellar wines and premium spirits
- Telephone calls
- Spa treatments
- Lodge transfers
- Airport Tax
- Park Entry Fees – Road & Air (*Entrance and landing fees are subject to change without prior notification*)
- Conservation Fee

PROVISIONAL RESERVATIONS

- All provisional reservations will be automatically released if not confirmed within 2 weeks of booking being made.

PAYMENT

- A deposit of 20% of the total accommodation charge is required to confirm a provisional reservation and full payment is required 45 days prior to arrival.
- Deposit conditions may be waived for bookings from the trade, tour operator and agents at the Lodge's discretion.
- Extras may be settled in camp.
- We accept all credit cards.
- We do not accept travellers cheques.
- **PEAK SEASON TERMS AND CONDITIONS:**
Peak: 20 December until 5 January. All Bookings over Christmas and New Year's Eve can only be secured once a 20% non-refundable deposit has been paid.

GROUP RESERVATIONS:

Should the reservations department require the accommodation that is being held by the group for the same dates, we will request the group to supply us with an immediate 20% non-refundable deposit. A booking of 8 guests or more is classed as a group booking.

CANCELLATION POLICY

Our cancellation policy is as follows:

> 45–31 days – 50% of full amount

> 30–15 days – 75% of full amount

>14 days or less – 100% of full amount

20% Non-Refundable for group of 4 suites or more

20% Non-Refundable between 20 Dec & 05 Jan (Peak Period)

Cancellation is effective only when advice is received in writing by our reservation office. Bookings are not transferable.

CHILDREN

- At Main Camp children over 10 will be accepted (one child may share a suite with 2 full paying adults) and pay 50% of the adult sharing rate. Adults and the child will share a row on the game drive vehicle.
- Little Madikwe - Our Family Suite can accommodate children of any age.
- Babysitters are available.

WHAT TO TAKE

- Comfortable walking shoes
- Sun hat, sunglasses and sunblock
- Cameras and binoculars
- Light, neutral coloured clothing
- Bathing suit
- Warm jackets essential in winter (May – Oct)

DRONES

Drones are **STRICTLY PROHIBITED** in the Madikwe Game Reserve, failure to comply with this rule will result in a heavy fine or arrest by reserve management.

ARRIVAL/DEPARTURE

- Guests may arrive any time from 14h00
- Rooms are to be vacated by 11h00

HOW TO GET TO THERE

- 50 minute scheduled flight direct from Johannesburg to Madikwe Game Reserve landing fee can be settled at the lodge - subject to change.
- Johannesburg to Madikwe Hills via Zeerust / Abjaterskop Gate (see following page) ±4.5 hours drive (±330 km).
- Complimentary road transfer from the Madikwe Hills airstrip to the lodge.

Gates open at 06h00 and closes at 18h00. Entrance fee by Road can be settled at the lodge - subject to change.

Please be advised that guests driving to the lodge who arrive after sunset will not be allowed to self drive in the reserve. The lodge will send a representative to escort guests to the lodge at an additional cost.

LODGE GPS CO-ORDS: S-24° 43' 28.3" E 26° 20' 49.6"

(-24.724731 26.34706) *Please do not follow your GPS after Zeerust/ Sun City as it will take you on the wrong roads.*

Please note we require a 25% deposit in order to secure a ground or air transfer.

AIRSTRIP: Jets smaller than class 135 is allowed. Approach from the East. Do not fly over lodges North and West of the airstrip.

Runway Length - 1200 meters tarred

Runway Heading - 11/29

GPS CO-ORDS: S-24° 44' 0" E 26° 24' 48.9"

LODGE

TELEPHONE +27(0)18 350 9200
MOBILE +27(0)66 032 5552
E-MAIL reception@madikwehills.com

MANAGER Hannes Kruger
MOBILE +27(0)78 522 9987
E-MAIL hannes@madikwehills.com

WEBSITE www.madikwehills.com
WEB BLOG www.madikwehills.com/blog
ADDRESS PO Box 551, Zeerust, 2865

RESERVATIONS

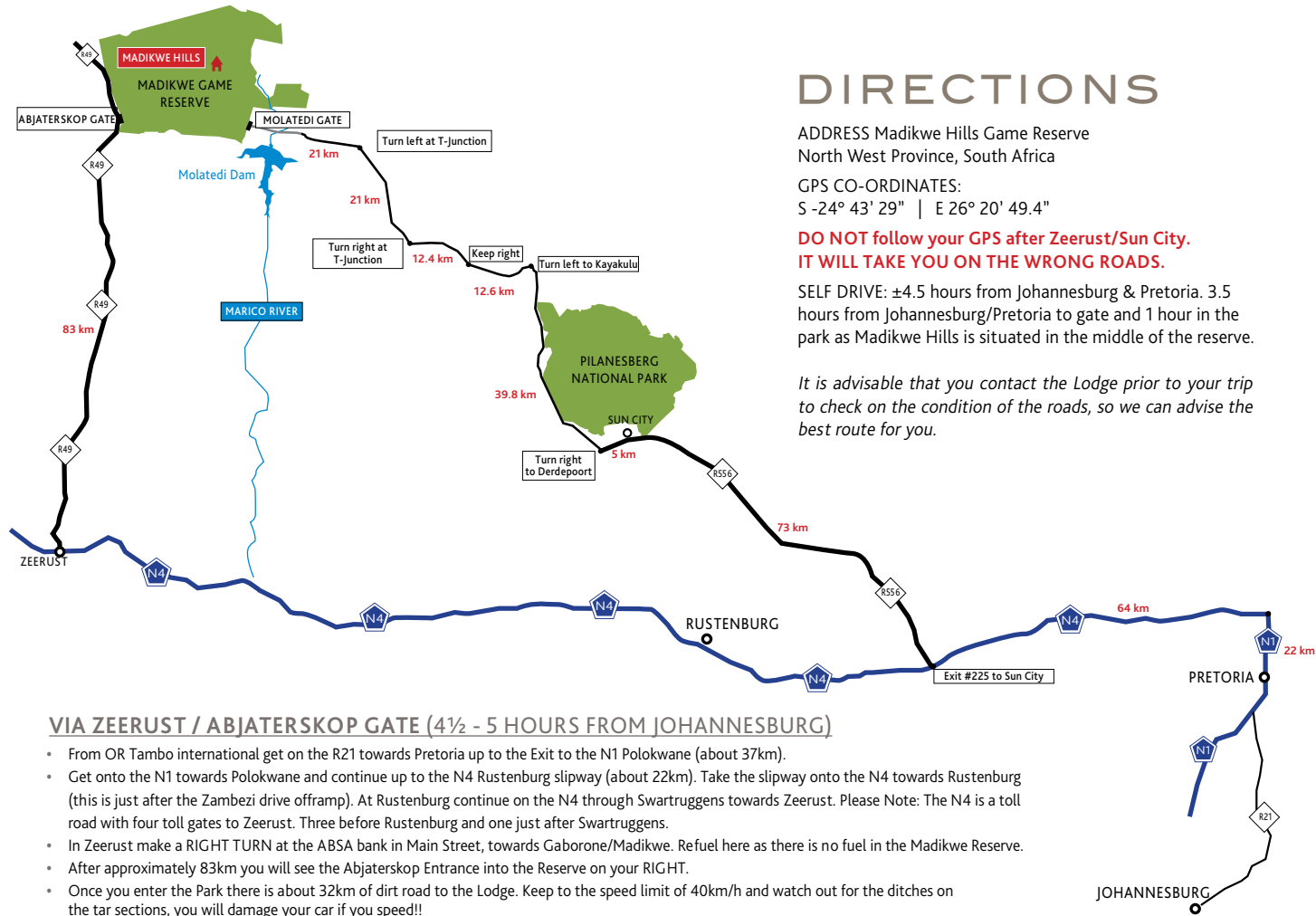
TELEPHONE +27 (0)11 781 5431
E-MAIL reservations@madikwehills.com

CENTRAL RESERVATIONS

TELEPHONE +27(0)13 750 0943
MOBILE +27(0)63 026 4041
E-MAIL lodge reservations@seasonsinafrica.com

BANKING DETAILS

ACCOUNT NAME Madikwe Hills Partnership
BANK ABSA Bank
BRANCH CODE 630504
BRANCH NAME RB Clearwater 1 Premium
ACCOUNT NUMBER 4058805006
TYPE OF ACCOUNT Cheque
SWIFT CODE absazajj
VAT NUMBER 4960213082



DIRECTIONS

ADDRESS Madikwe Hills Game Reserve
North West Province, South Africa

GPS CO-ORDINATES:
S -24° 43' 29" | E 26° 20' 49.4"

**DO NOT follow your GPS after Zeerust/Sun City.
IT WILL TAKE YOU ON THE WRONG ROADS.**

SELF DRIVE: ±4.5 hours from Johannesburg & Pretoria. 3.5 hours from Johannesburg/Pretoria to gate and 1 hour in the park as Madikwe Hills is situated in the middle of the reserve.

It is advisable that you contact the Lodge prior to your trip to check on the condition of the roads, so we can advise the best route for you.

VIA ZEERUST / ABJATERSKOP GATE (4½ - 5 HOURS FROM JOHANNESBURG)

- From OR Tambo international get on the R21 towards Pretoria up to the Exit to the N1 Polokwane (about 37km).
- Get onto the N1 towards Polokwane and continue up to the N4 Rustenburg slipway (about 22km). Take the slipway onto the N4 towards Rustenburg (this is just after the Zambezi drive offramp). At Rustenburg continue on the N4 through Swartruggens towards Zeerust. Please Note: The N4 is a toll road with four toll gates to Zeerust. Three before Rustenburg and one just after Swartruggens.
- In Zeerust make a RIGHT TURN at the ABSA bank in Main Street, towards Gaborone/Madikwe. Refuel here as there is no fuel in the Madikwe Reserve.
- After approximately 83km you will see the Abjaterskop Entrance into the Reserve on your RIGHT.
- Once you enter the Park there is about 32km of dirt road to the Lodge. Keep to the speed limit of 40km/h and watch out for the ditches on the tar sections, you will damage your car if you speed!!
- Once through the gate, continue straight for 10.8km (the road will become tarred after a few km's) until you find a T-Junction. TURN LEFT (There will be a sign stating Derdepoort, left)
- After 2km TURN RIGHT at the sign saying Park Admin (if the road became dirt again you went too far)
- Drive for 1km, past the entrance to Park Admin and TURN LEFT at the sign saying Derdepoort, Left
- After 540m, you'll find a T-junction – TURN RIGHT onto Derdepoort Main Road towards Derdepoort Gate.
- Carry on straight on this road for 10.1km until you find a 4 way crossing. (you will see the following during the 10.1kms:)
 - > After about 500m the tar will end
 - > After about 2.5km you will pass Moseitha's entrance to your left
 - > After about 1.5km you will go down a steep hill (once again tarred, in between two mountains – watch out for Klipspringers, small antelope)
 - > 3km later there will be a big Palm Tree on your left
 - > 2.7km later you will reach the 4 way crossing
- The road will split immediately after the 4 way crossing. Keep to the RIGHT.
- After 1.4km the road will join again and 1.2km after the join you need to TURN LEFT – there is a sign saying "Etali, Ukutula and Madikwe Hills"
- After 2.4km the road splits – KEEP LEFT. After 300m it will split again – KEEP LEFT.
- Drive for 1.6km, passing Ukuthula entrance and Etali Entrance and TURN LEFT in front of the "Madikwe Hills" sign (brass letters on a wooden log).

VIA SUN CITY / MOLATEDI GATE

(±4.5 HOURS FROM PRETORIA)

There is 9.6km of gravel road just before the Molatedi Gate on this route. It is shorter than the route through Zeerust. It is advisable to fill up with fuel at the Sun Village, just after the Sun City entrance on the right since there is no fuel available inside the reserve. Take the shortest route to Sun City, otherwise follow directions below:

- From the OR Tambo International Airport, get onto the R21 towards Pretoria up to the Exit to the N1 Polokwane.
- Get onto the N1 towards Polokwane and continue up to the N4 Rustenburg slipway about 22km). Take the slipway onto the N4 towards Rustenburg (just after the Zambezi drive offramp).
- Continue in the direction of Rustenburg – take exit #225 which is the R556 Sun City/Majakaneeng. (About 64km)
- Turn right at the off ramp and continue straight to Sun City (approx 73km to Sun City from this off ramp). After passing Sun City on the right, continue straight (approximately 5km) until you reach a four-way junction. TURN RIGHT to DERDEPOORT.
- Continue for 39.8km (Stick to the speed limit for the first 8km, the Traffic Police sometimes speed trap in this section. Also, once you have passed Shepherd's Tree Lodge Entrance on your right, about 5km later you will pass through a village that has 11 speed bumps. Be careful as the bumps are not painted so they are not clearly visible!) Turn left at the sign saying KAYAKULU.
- After 12.6km the road will split – Keep RIGHT.
- After 12.4km you will reach a T-Junction. Turn RIGHT
- After 20.3km, at the T-Junction, turn LEFT.
- Continue straight along this road. After 11.8km the tar road will become a gravel road and it is 9.6km of gravel until you reach the Molatedi Gate.
- Once through the gate, keep to the speed limit of 40km/h and watch out for the ditches on the tar sections, you will damage your car if you speed!!
- Carry on straight for about 11.9km until you find a sign post on your left, shortly after the road became tar – TURN RIGHT towards Derdepoort gate.
After 540m, you'll find a T-junction – TURN RIGHT onto Derdepoort Main Road towards Derdepoort Gate.
- Carry on straight on this road for 10.1km until you find a 4 way crossing. (you will see the following during the 10.1kms:)
 - > After about 500m the tar will end.
 - > After ± 2.5km you will pass Moseitha's entrance to your left.
 - > After about 1.5km you will go down a steep hill (once again tarred, in between two mountains – watch out for Klipspringers, small antelope).
 - > 3km later there will be a big Palm Tree on your left.
 - > 2.7km later you will reach the 4 way crossing.
- The road will split immediately after the 4 way crossing. Keep to the RIGHT.
- After 1.4km the road will join again and 1.2km after the join you need to TURN LEFT – there is a sign saying "Etali, Ukutula and Madikwe Hills".
- After 2.4km the road splits – KEEP LEFT. After 300m the road splits again – KEEP LEFT.
- Drive for 1.6km, passing Ukuthula entrance and Etali Entrance and TURN LEFT in front of the "Madikwe Hills" sign (brass letters on a wooden log).