



&BEYOND

DISCOVER NGALA PRIVATE GAME RESERVE

# &Beyond Ngala Safari Lodge

The magic of Africa comes alive in the elegant &Beyond Ngala Safari Lodge, a timeless escape ideally positioned on a private concession inside the highly acclaimed Kruger National Park.



DISCOVER NGALA PRIVATE GAME RESERVE  
8Beyond Ngala Safari Lodge

## Why stay?

**1 UNMATCHED LOCATION**  
Ngala Private Game Reserve shares unfenced borders with the world-renowned Kruger National Park, nearly 2 million hectares (4.9 million acres) of unrivalled wilderness and wildlife land, home to the Big Five and more species of large mammals than any other African game reserve.

**2 BIG FIVE WILDLIFE**  
Guests who visit Ngala Private Game Reserve are promised more than just a wildlife experience. The Big Five game reserve is home to an abundance of elephant and buffalo herds, large lion prides, leopard, spotted hyena, wild dog, giraffe, rhino, and more.

**3 PRIVATE CONCESSION**  
Ngala Private Game Reserve has exclusive traversing rights on 14 700 hectares (36 324 acres) of wilderness land, which means guests can explore the reserve on foot free from the constraints of roads and vehicles, embark on thrilling game drives, or venture sensitively off-road for intimate wildlife encounters.

**4 FAMILY FRIENDLY**  
Ngala Safari Lodge is the ideal family lodge, with three Family Cottages, a Family Villa, as well as a dedicated WILDchild programme, which is filled with fun and interactive activities offering children the opportunity to leave with treasured memories of the African bush.



**This trip exceeded our expectations!  
My daughter still dreams of Ngala and  
misses her guide and mentor. ”**

8BEYOND GUEST

# Lodge amenities



1

## BUSH BAR

Each evening, guests meet at the Ngala Safari Lodge bar for drinks with their guide and fellow guests before dinner, recounting the sightings after an eventful day's safari. Enjoy an array of local and premium brands on offer.



2

## HEALING EARTH TREATMENTS

Enjoy a relaxing Healing Earth spa treatment in the intimate massage sala where you can revel in a space of wellbeing and tranquillity with a glass of sparkling wine or a cup of herbal tea.



3

## FITNESS CENTRE

Between game drives, guests can enjoy a training session in the gym with a view unlike any other fitness centre. The gym is well-equipped with a treadmill, yoga mats, an exercise ball and static weights.



4

## SAFARI SHOP

The Safari Shop boasts a range of quality, handpicked crafts and fashion wear showcasing the very best facets of the region, including stunning jewellery designed and fashioned by artisans from the local community, who draw on ethnic styles and motifs.

DISCOVER NGALA PRIVATE GAME RESERVE  
Beyond Ngala Safari Lodge

# Lodge amenities



## 5

### SWIMMING POOL

The sparkling rim-flow swimming pool is incredibly inviting in the lowveld heat and is the perfect place not only to refresh, but to enjoy a soft drink or a gin and tonic in hand, while watching the mighty elephant, stoic buffalo, and other wildlife drink from the lodge's waterhole.



## 6

### LIBRARY

The library is an inviting spot in the lodge where you can cuddle up with an interesting book from the bookshelf, gather your family for a board game, or just potter around and observe the interesting surrounds.



## 7

### SAFARI ACCESSORIES

Guests will receive a complimentary pair of SWAROVSKI OPTIK CL Companion 8x30 binoculars (one per cottage) for use throughout your stay, as well as a take-home Guides' Journal featuring wildlife checklists and maps.



## 8

### DINING LOCATIONS

Ngala Safari Lodge offers a variety of dining options and flexibility. Enjoy your dinner in a new location each evening – with al fresco dinners under the stars and around the open blazing fire in the lodge's traditional boma, in the candlelit courtyard, in the privacy of your suite, or out on the reserve in a lantern-lit safe spot.

# DISCOVER NGALA PRIVATE GAME RESERVE

&Beyond Ngala Safari Lodge Layout



&BEYOND  
**Ngala**  
Safari Lodge

- Road
- Footpath
- Riverbed / Waterhole

## DISCOVER NGALA PRIVATE GAME RESERVE

Beyond Ngala Safari Lodge

# Lodge overview

### LODGE

Maximum number of guests	47
Number of rooms	21
Family accommodation	20 Classic Cottages (max. 2 guests), including 1 triple Cottage (max. 3 guests) 3 Family Cottages with interleading doors (max. 4 guests) 1 Family Villa (max. 6 guests)
WILDchild programme	Yes
Pilot / Guide accomodation	No
Room types	Cottages and Family Villa
Distance between rooms	20 m (66 ft)
Check-in / Check-out	14h00 / 11h00
Lodge closure	Open year-round

### DINING

Food / Dietary options	Halaal available at an additional cost and with at least 4 weeks' notice
Private butler service	Yes
Plated service	Yes
Private dining	Yes

### PAYMENT TYPES ACCEPTED

Credit cards accepted	Visa, Diners, Amex and Mastercard
Currency	All major currencies accepted

### FACILITIES

Power	220v AC
Internet access	Yes, Wi-Fi in rooms and guest area
Boma	Yes
Bar	Yes
Wine cellar	Yes
Interactive kitchen	No
Swimming pool	Yes
Wellness offering	Healing Earth treatments offered in the massage sala
Fitness centre	Well-equipped gym
Conference facilities	No
Weddings and blessings	Yes
Wheelchair accessibility	Yes, with assistance
Complimentary laundry service	Yes
Beyond Safari Shop	Yes

### OTHER

Game drive vehicle type	Open safari vehicle (max. 6 guests per vehicle)
Private photographic vehicle	Yes, depending on availability and at additional cost
Private 4x4 safari vehicle	Yes, depending on availability and at additional cost

DISCOVER NGALA PRIVATE GAME RESERVE  
 Beyond Ngala Safari Lodge

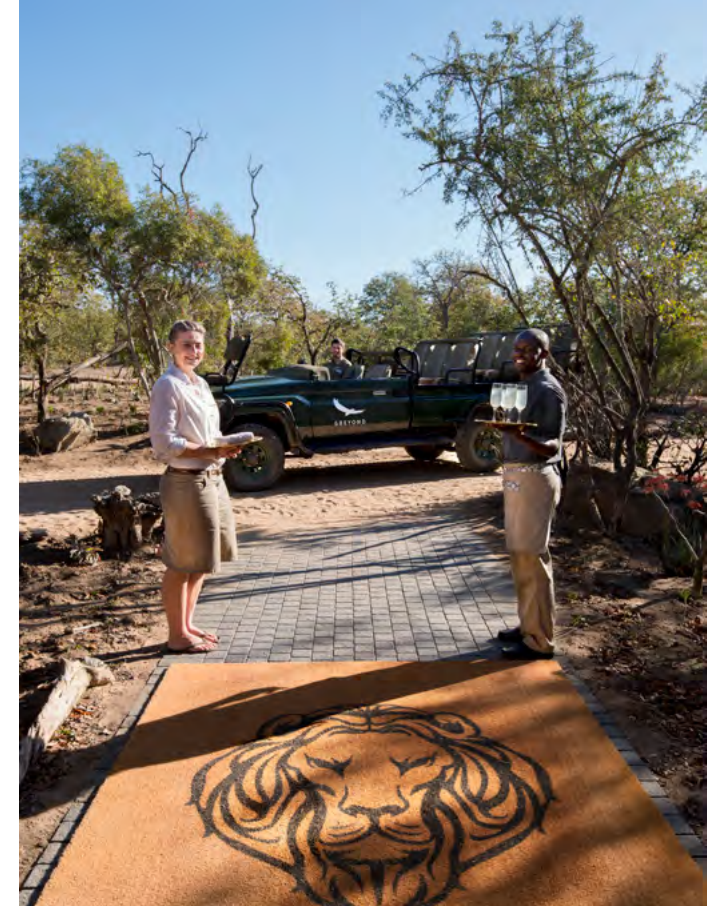
# Inclusions

## RATE INCLUDES

Accommodation	✓
Three meals daily	✓
Soft drinks, house wines, local brand spirits and beers, tea and coffee, and refreshments on game drives	✓
Laundry	✓
Twice-daily safari game drives	✓
One-hour nature walks accompanied by experienced armed guides (subject to availability)	✓
Conservation talks	✓
Wild Impact community visits	
Emergency medical evacuation insurance	✓
VAT	✓
Transfers to and from the lodge airstrip	✓
Guides' Journal with illustrated wildlife and vegetation checklist, and an area map with illustrated Star Birds checklist	✓
Concession map with Ngala's illustrated Star Birds checklist	✓
The exclusive use of one pair of SWAROVSKI OPTIK binoculars per room to share for the duration of your stay	✓

## RATE EXCLUDES

Administration fee	✗
Telephone calls	✗
Safari Shop purchases	✗
Gratuities	✗
All items of a personal nature	✗
All Healing Earth wellness treatments	✗
Champagne, cognacs, fine wines, premium brand spirits and cigars	✗
Government bed levy	✗
Conservancy or park fees	✗
Landing fees	✗
Photographic vehicle (available at an additional cost)	✗
Experiences at an additional cost: Shangaan village visit; private specialist safaris; scenic helicopter flight; rhino conservation experience and Ngala Treehouse experience	✗



**NOTE:** The use of unmanned aerial vehicles (drones) is prohibited in the conservation areas we manage. This rule will apply throughout Africa, as our partners in various countries and regions have adopted a similar stance.

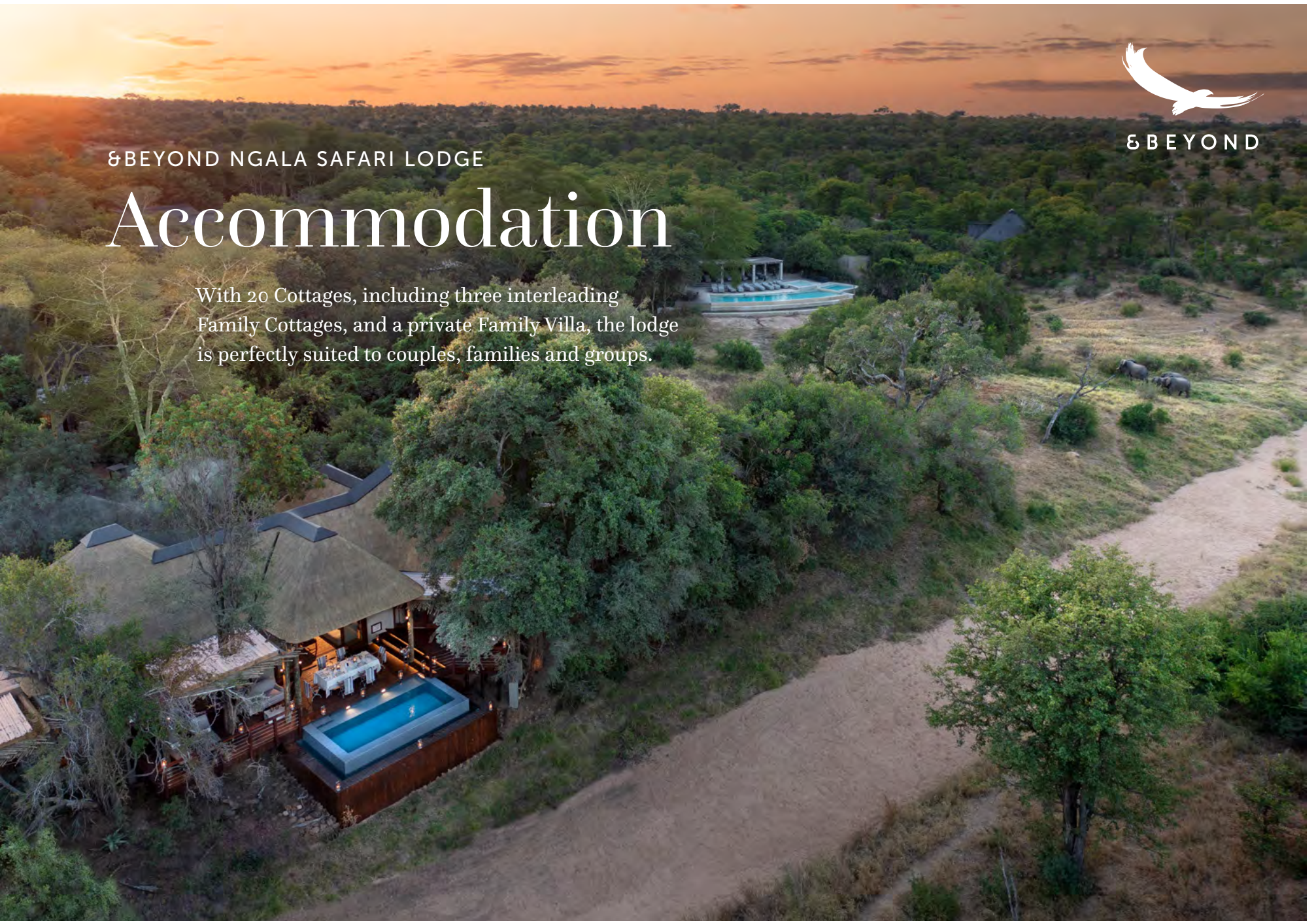


&BEYOND

&BEYOND NGALA SAFARI LODGE

# Accommodation

With 20 Cottages, including three interleading Family Cottages, and a private Family Villa, the lodge is perfectly suited to couples, families and groups.



BEYOND SOUTH AFRICA

DISCOVER NGALA PRIVATE GAME RESERVE  
Beyond Ngala Safari Lodge Accommodation

# Sheer safari elegance

Ngala Safari Lodge reimagines classic safari style, blending spacious, contemporary design with nostalgic touches and thoughtful detail.



DISCOVER NGALA PRIVATE GAME RESERVE  
 Beyond Ngala Safari Lodge Accommodation

# COTTAGES

20 Classic Cottages / Max. 2 guests per Cottage



**A CLASSIC SAFARI**  
 Beyond Ngala Safari Lodge boasts 20 thatched Classic Cottages, each exuding a romantic colonial ambience with nostalgic safari memorabilia throughout. Each Cottage boasts a luxurious ensuite bathroom, complete with a bath chamber and both indoor and outdoor showers. Comfortable lounge chairs on private verandas allow for post-safari contemplation or even an afternoon siesta.

## ROOM FACILITIES

Room size	48 m <sup>2</sup> (517 ft <sup>2</sup> )
Private veranda	Yes, some rooms may overlook walkways
Private plunge pool	No
Personal bar	Yes
Personal coffee station	Yes
Air conditioning / Heating	Yes
Overhead fans	Yes
Mosquito nets	No, sealed rooms
Bath	Yes
Shower	Yes, indoor and outdoor
Separate WC	Yes
Telephone	Yes
Hairdryer	Yes
Internet access	Yes
In-room safe	Yes
Plug type	220V AC Plug Type C, D, M, N Adapters available
Triple bed option	1 triple room only
Twin bed option	Yes
Double bed option	Yes
Wheelchair accessibility	Yes, with assistance



Typical Cottage layout

DISCOVER NGALA PRIVATE GAME RESERVE  
 Beyond Ngala Safari Lodge Accommodation

# FAMILY COTTAGES

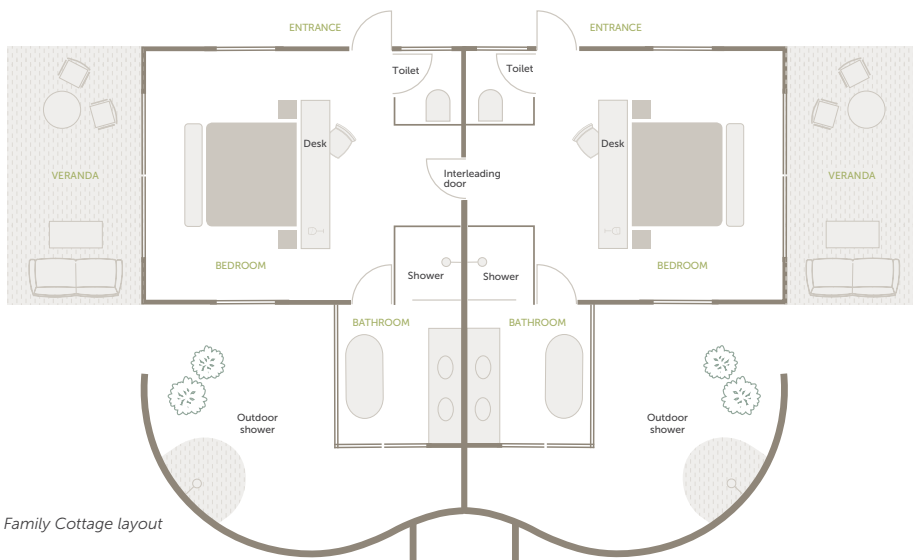
3 Family Cottages / Max. 2 adults & 2 children per Family Cottage



**SAFARI RECONNECTION**  
 Beyond Ngala Safari Lodge boasts three Family Cottages, each consisting of two identical regular cottages that are conveniently interlinked via a door, behind the beds, for easy access. The cottages each have an ensuite bathroom, with a bath, indoor and additional al fresco shower. Beds are convertible to twin. The Family Cottages can accommodate a maximum of two adults and two children.

## ROOM FACILITIES

Room size	96 m <sup>2</sup> (1 033 ft <sup>2</sup> )
Private veranda	Yes, some rooms may overlook walkways
Private plunge pool	No
Personal bar	Yes
Personal coffee station	Yes
Air conditioning / Heating	Yes
Overhead fans	Yes
Mosquito nets	No, sealed room
Bath	Yes
Shower	Yes, indoor and outdoor shower
Separate WC	Yes
Telephone	Yes
Hairdryer	Yes
Internet access	Yes
In-room safe	Yes
Plug type	220V AC Plug Type C, D, M, N Adapters available
Triple bed option	No
Twin bed option	Yes
Double bed option	Yes
Wheelchair accessibility	Yes, with assistance



Family Cottage layout

DISCOVER NGALA PRIVATE GAME RESERVE  
Beyond Ngala Safari Lodge Accommodation

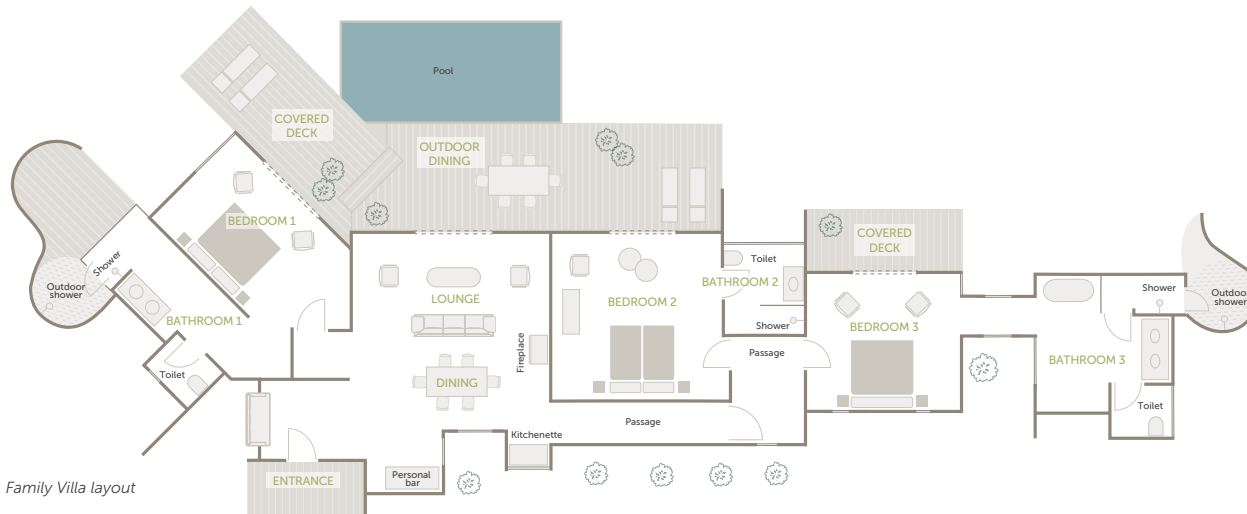
# A sole-use homestead

The Family Villa consists of three ensuite bedrooms, a cosy dining area and a private swimming pool. It is the only guest suite at the lodge with views of the Mapone riverbed. During your stay, you will have access to a dedicated butler, a ranger and tracker team and a private safari vehicle.



## FAMILY VILLA

3 bedrooms / Max. 6 guests



DISCOVER NGALA PRIVATE GAME RESERVE  
 Beyond Ngala Safari Lodge Accommodation

ROOM FACILITIES

Room size	98 m <sup>2</sup> (1 055 ft <sup>2</sup> )
Private veranda	Yes
Private pool	Yes
Personal bar	Yes
Personal coffee station	Yes
Air conditioning / Heating	Yes
Overhead fans	Yes
Mosquito nets	No, sealed room
Bath	Yes, only in bathroom 3
Shower	Yes, indoor and outdoor
Separate WC	Yes
Telephone	Yes
Hairdryer	Yes
Internet access	Yes
In-room safe	Yes
Plug type	220V AC Plug Type C, D, M, N Adapters available
Triple bed option	Yes, on request
Twin bed option	Yes
Double bed option	Yes
Wheelchair accessibility	Yes, with assistance



**MULTI-GENERATIONAL GATHERINGS**

An open, light-filled haven overlooking the seasonal Mapone Riverbed, the Family Villa feels like coming home to the bush.





&BEYOND

&BEYOND NGALA PRIVATE GAME RESERVE

# Ngala Treehouse experience

The ultimate sleep-under-the-stars experience, the Ngala Treehouse is a remote, overnight retreat offering you a luxurious private sanctuary amidst the African bush.



DISCOVER NGALA PRIVATE GAME RESERVE  
&Beyond Ngala Treehouse Experience

# What we love about it

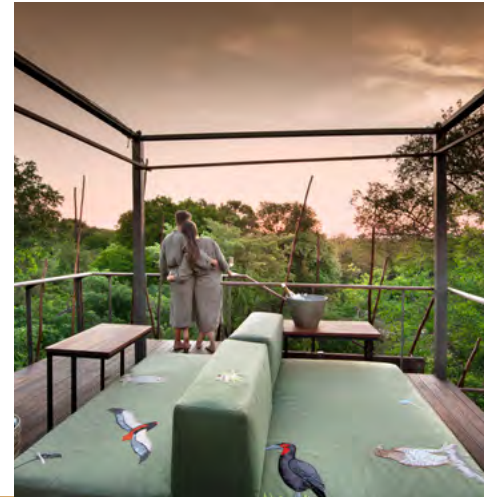
**1 A TREEHOUSE JUST FOR YOU**  
This 4-level treehouse features two sleeping areas cocooned in the natural bush; level 3, an indoor covered and weatherproofed room with a king-size bed, and level 4, a sleep-out platform under a retractable awning. Toast the sunset and enjoy a starlit picnic before tucking into a delicious dinner. Assured of an intimate wilderness experience, completely off-the-grid, themed in luxury and exclusivity; this is one experience you'll never forget.

**2 A WILDERNESS EXPERIENCE**  
Surrounded by home comforts, a fully-stocked bar and a selection of midnight and breakfast snacks; you could be forgiven for thinking you were in a lodge. However, your night at Ngala Treehouse is essentially an overnight wilderness experience that complements your stay either at &Beyond Ngala Tented Camp or Ngala Safari Lodge.

**3 LOCATION IS KEY**  
Set within the Ngala Private Game Reserve, 5 km (3 mi) from &Beyond Ngala Tented Camp: the reserve shares unfenced borders with the Kruger National Park, home to the Big Five and more species of large mammals than any other African game reserve. Ngala (meaning 'lion') lives up to its namesake, with the reserve supporting several large prides.

**4 PRIVATE CONCESSION BONUS**  
Ngala Private Game Reserve has exclusive traversing rights on 14 700 hectares (36 324 acres) of private wilderness land. As a guest of &Beyond Ngala Tented Camp or Ngala Safari Lodge, you will enjoy the exclusivity and flexibility of morning and afternoon drives within this concession area, and the option of interpretive bush walks.

**5 BEYOND THE EXPECTED**  
In the true &Beyond tradition of going beyond the expected – think cappuccinos and cocktails on game drives, or your very own pair of complimentary-use SWAROVSKI OPTIK binoculars during your stay with us – the Ngala Treehouse experience, with its feather-light imprint, is a complete reimagining of a sleep-under-the-stars adventure... and it's yours for the taking.



DISCOVER NGALA PRIVATE GAME RESERVE

&Beyond Ngala Treehouse Experience

# Treehouse overview

Please note that the Ngala Treehouse experience is only available when booking one or more nights at either &Beyond Ngala Safari Lodge or Ngala Tented Camp. Guests have the option of returning to their room / tent in the event of bad weather. The rate of Treehouse will be added to the room rate should guests book a night at the Treehouse.

## FACILITIES

Maximum guests	2 Adults and 2 children (10 – 16 years only)
Bed configuration	Third level: king-size bed only (weatherproof) Top level: double daybed / lounge (not weatherproof)
Mosquito nets	Yes
Personal bar	Yes
Personal coffee station	Yes
Dining	Yes
Separate flushing WC	Yes
Indoor shower	Yes
Telephone	Guests are equipped with a radio and emergency phone
Internet access	No
Charging facilities	Solar power (guests will be able to charge their phones and camera batteries)

## OTHER

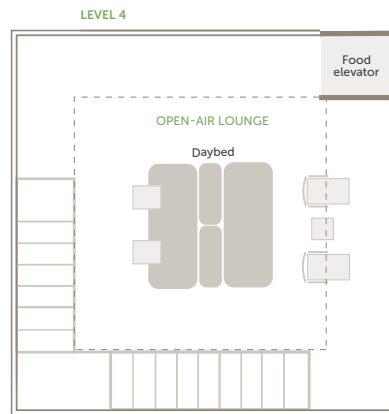
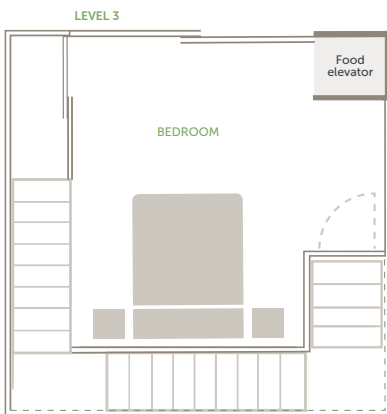
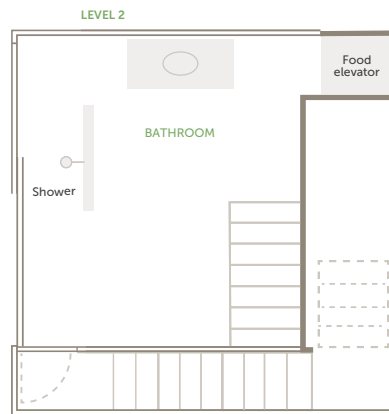
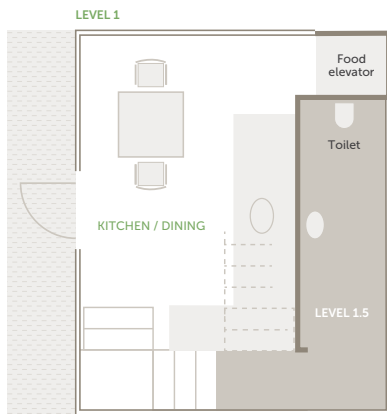
Children	Max. 2 accompanied children (10 – 16 years old only). No unaccompanied guests under 18 years old ( <i>Please note bed configuration</i> )
Weatherproof	Only the bedroom is fully weatherproof
Safety features	Mopane boma; two-strand electric fence; lockable doors; first aid kit; fire extinguisher; emergency contact via radio and cell phone
Distance to nearest camp	Ngala Tented Camp – 5 km (3 mi)
Min. / Max. nights stay	There is no limitation, however, guests will still need a room at either Ngala Tented Camp or Ngala Safari Lodge, and must return there during the day (availability dependent)
Wheelchair accessibility	Not suitable for guests with mobility issues, as there are 52 steps to the top level
Size	5,4 x 5,4 m (17,7 x 17,7 ft)
Height above ground	12 m (39,3 ft)
Best time to travel	Year-round

We have always viewed everything we do in &Beyond through the eyes and dreams of our guests. Experience for yourself what lies beyond the expected. ”

Joss Kent  
&BEYOND CEO

# Treehouse accommodation

1 Treehouse / Max. 2 adults & 2 children (10 – 16 years only)





&BEYOND

DISCOVER NGALA PRIVATE GAME RESERVE

# Adventures of a lifetime

Encounter iconic wildlife on an &Beyond African safari and enjoy an array of private and specialist experiences.



## DISCOVER NGALA PRIVATE GAME RESERVE

Adventures of a Lifetime

# Experiences and highlights

Beyond has much to offer – from twice-daily game drives to a range of private and specialist experiences.



# 1

### SAFARI GAME DRIVE

Sharing an unfenced boundary with the world-renowned Kruger National Park means a spectacular diversity of wildlife moves through this immense wilderness, including the Big Five and spotted hyena. African wild dog can also be spotted moving through the reserve. Twice-daily game drives allow for ample time to search for these iconic creatures in their natural habitat.



# 2

### GUIDED NATURE WALK

Walking in nature is the most intimate and immersive way to encounter and learn about the bush. On this walk, you'll traverse the reserve's untamed landscape, up close and personal with its finer details – from medicinal plants and animal tracks to tiny insects. This is an incredible opportunity to experience the smaller things often missed when in a vehicle.



# 3

### CONSERVATION TALK

Meet with our ecological monitor to learn all about our conservation efforts taking place in and around the lodge, as well as within the greater Kruger National Park. You'll gain a new perspective on the importance of protecting the region and its wildlife.



# 4

### WILD IMPACT COMMUNITY VISIT

An immersive, privately guided excursion in partnership with Wild Impact\*, visit the neighbouring partner communities of Welverdiend or Hlavekisa gaining insight into the everyday lives of community members. Witness firsthand the community-led projects that focus on education, healthcare, enterprise development and conservation.

*\*Formerly Africa Foundation*



# 5

### SHANGAAN VILLAGE VISIT\*

Hosted by a local Shangaan guide, spend time at a nearby community, sharing interesting insights and narratives about Shangaan culture, including its fascinating customs, beliefs and traditions. During your visit, you'll be invited into a traditional homestead to witness the daily routine of an authentic Shangaan family, where aeons of tradition intersect with modern life.

*\*At an additional cost*

## DISCOVER NGALA PRIVATE GAME RESERVE

Adventures of a Lifetime

# Specialist safaris and experiences

When booking a private vehicle and specialist guide, our safari experiences can be tailor-made to suit a wide range of interests.



# 1

### BIG GAME VIEWING WALK

Experience the thrill of seeing animals on foot, engaging all your senses to discover a world where each sound, scent and bent blade of grass has a meaning. Led by a qualified guide and tracker team, track and view certain animals from a respectable distance.



# 2

### PRIVATE SPECIALIST SAFARIS

We can curate a selection of private safari experiences tailored to your interests and needs, from family (Ngala Safari Lodge only) and birding to photography and walking. You let us know what you're interested in, and we'll try our best to make it happen.



# 3

### NGALA TREEHOUSE

Peek out over the reserve's treeline from the upper reaches of Ngala Treehouse. With awe-inspiring sunrise and sunset views, the luxurious Ngala Treehouse provides the most exclusive wilderness experience. A romantic overnight retreat, feel at one with nature as you sleep on an elevated and safe platform, under a blanket of stars, in unsurpassed comfort.



# 4

### RHINO CONSERVATION EXPERIENCE\*

Seize the once-in-a-lifetime opportunity to participate in the safe darting and capture of a white rhino, while the veterinary team notches the sleeping animal's ear for research and security monitoring. Or assist with the painless removal of both rhino horns in order to ensure their survival and protection against poachers.

\*Seasonal



# 5

### WEDDING

From a classic safari wedding in the open bush or a sunset ceremony overlooking a spectacular view to walking down the aisle in a dry riverbed; our meticulous wedding planners can put together a wedding filled with breathtaking moments and joyful surprises that will pamper and delight any couple.



# 6

### SCENIC HELICOPTER FLIGHT

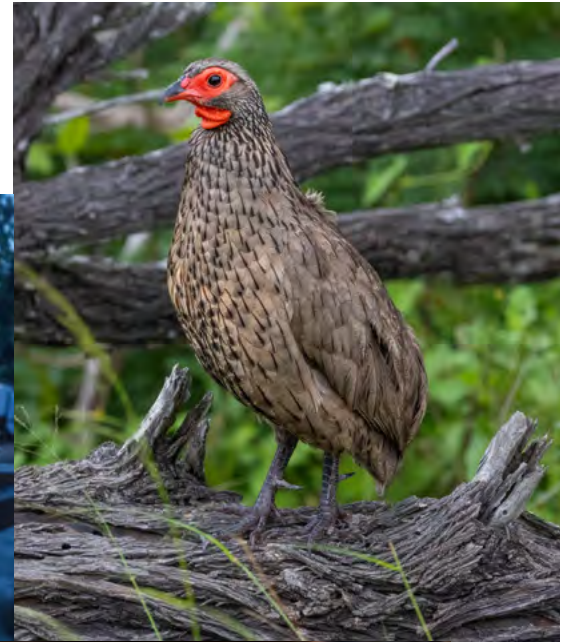
Soar over tropical banana plantations, deep gorges, and lush valleys bursting with colour. Linger above one of the many cascading waterfalls before heading off to God's Window, Blyde River Canyon, and the Three Rondavels.

DISCOVER NGALA PRIVATE GAME RESERVE  
Adventures of a Lifetime

# Year-round activities

- ✓ Safari game drive
- ✓ Birding
- ✓ Guided nature walk
- ✓ Conservation talk
- ✓ Big Game viewing walk\*
- ✓ Private specialist safaris\*
- ✓ Wild Impact community visit
- ✓ Shangaan village visit\*
- ✓ Boma or bush dining (lodge specific)
- ✓ Sundowners
- ✓ Scenic helicopter flight\*
- ✓ Ngala Treehouse\*
- ✓ Healing Earth wellness treatment\*
- ✓ &Beyond Safari Shop\*
- ✓ Wedding\*

*\*At an additional cost  
Some experiences are weather dependent*



**The staff were incredible. They made us feel like family from the moment we arrived. We were already planning our return trip before we even left! ”**

DISCOVER NGALA PRIVATE GAME RESERVE

Adventures of a Lifetime

# Timing is everything

	JAN	FEB	MAR	APR	MAY	JUN	JUL	AUG	SEP	OCT	NOV	DEC
The ideal time for a tracking or walking safari is during winter when it's cooler in the middle of the day					✓	✓	✓	✓	✓			
Summer is the best time for a photographic safari as landscapes are greener and watering holes fuller	✓	✓	✓						✓	✓	✓	✓
Although offered year-round, night drives are ideal during the winter months when the grass is shorter				✓	✓	✓	✓	✓				
The ideal time to view baby animals in the bush is during summer, usually at the start of the rainy season	✓	✓									✓	✓
Best game viewing, as animals gather around waterholes and are easier to spot in the thinned-out bush					✓	✓	✓	✓	✓	✓		
Year-round birding, but if you want to see lots of birds then summer is best when the migrant birds return	✓	✓	✓							✓	✓	✓



DISCOVER NGALA PRIVATE GAME RESERVE  
&Beyond Ngala Safari Lodge

# WILDchild

Offering a wide range of fun and exciting bush activities for children aged 3 – 12 years, &Beyond Ngala Safari Lodge is ideal for families looking to escape the hustle and bustle of everyday life. While on a family safari, you can rest assured that your children will always be safe and well cared for (both on and off game drives). Every minute is supervised by our guides and lodge staff, who provide hours of amusement and invaluable information to the children in their care.

## WHY WE LOVE &BEYOND'S FAMILY SAFARIS

- Special WILDchild programme for children aged 3 – 12 years
- Each WILDchild receives a backpack filled with age-appropriate goodies
- Activities are seasonal and include bark rubbing, bug collecting, frog safaris, 'poo walks', baking with the chef and more
- Special children's menus available

## FAMILY ACCOMMODATION

3 Family Cottages (2 interleading rooms)	Maximum 2 adults + 2 children
1 Family Villa (3 rooms)	Maximum 2 adults + 4 children Maximum 4 adults + 2 children Maximum 6 adults
1 triple Cottage (1 room with 3 beds)	Maximum 2 adults + 1 child

## CHILD POLICY\*

0 – 5 years	Not permitted on game drives; additional children's drives may be requested
6 – 11 years	Permitted on game drives at ranger's discretion Not permitted on walks outside of the lodge grounds
12 – 16 years	Permitted on game drives and nature walks Not permitted on Specialist Walking Safaris

*\*The child policy applies to children participating on game drives with a private vehicle only. Children who share a vehicle with other guests not in their party, may be subject to activities only at the lodge manager's discretion.*

**Please note** that due to the lodge not being fenced off, children are required to have an adult accompanying them at all times.

**Childminders** are available but must be booked on the day of arrival. An hourly rate per child is payable at the lodge.

**Ngala Treehouse:** Maximum 2 adults + 2 children (10 – 16 years). Children are on a request basis and a 25% supplement per child per night will apply. No unaccompanied guests under 18 years old.



## DISCOVER NGALA PRIVATE GAME RESERVE

Guest Experience

# A day in the life

OF A GUEST

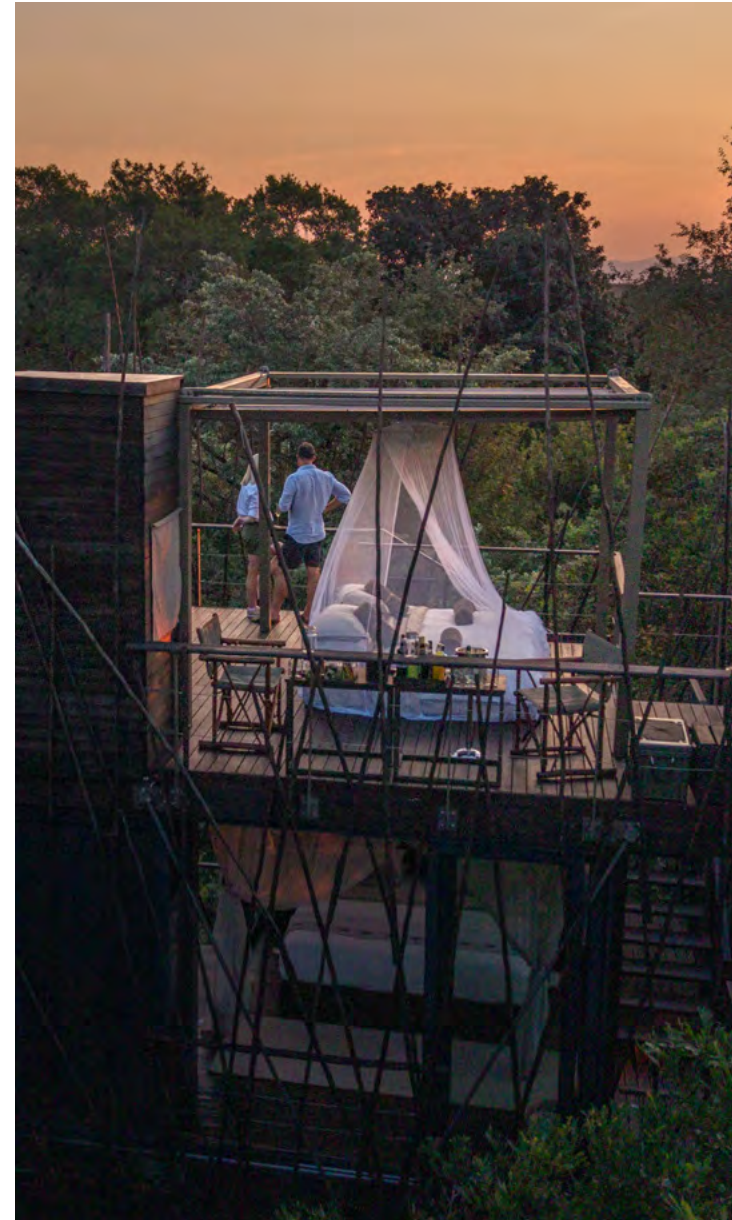
From the moment you wake up; your &Beyond experience is tailored to your interests and needs. Your butler and guide will discuss the day with you, including timings and experiences, ensuring your day is as extraordinary as the location you are visiting. Here is what to expect in a day\* on safari at Ngala.

### TIMING

### EXPERIENCE

Early morning	Wake-up call from your guide with a steaming hot cup of tea or coffee
Early morning	Head to the guest area to enjoy a health shot or warm drink, plus a treat, before heading out on your morning game drive
Morning	Game drive with tea and coffee stop and snacks
Mid-morning	Tuck into breakfast at the lodge
Midday	Go on a guided nature walk or local community visit
Early afternoon	Savour lunch at the lodge
Afternoon	Indulge in a luxurious treatment at the wellness spa or enjoy a workout in the gym
Mid-afternoon	High Tea in the guest area
Late afternoon to early evening	Game drive with sundowner stop and snacks
Evening	Choose to enjoy dinner and spend the night at the Ngala Treehouse at an additional cost OR Pre-dinner drinks and snacks in the guest area, at the bar or on the outdoor deck before tucking into dinner at the lodge

*\*Timings and guest experiences are guidelines only. All experiences are subject to availability and weather dependent. Some experiences are at an additional cost.*



DISCOVER NGALA PRIVATE GAME RESERVE

# Sustainability initiatives

In partnership with Wild Impact\*, our long-standing community and conservation development partner.



## CARE OF Land

- 53 362 Plastic water bottles eliminated per year by ♻️Beyond Mpumalanga\*\* lodges as a result of on-site bottling plants
- 100% of our ♻️Beyond Mpumalanga lodges have advanced wastewater treatment plants
- 5.4 Kg CO<sub>2</sub> per head reduction annually in our Mpumalanga region since 2018
- 98% Achieved by ♻️Beyond Ngala Private Game Reserve in an environmental audit conducted by the specialist Rhengu Environmental Services
- 18% improvement in ♻️Beyond Mpumalanga sustainability audit scores since 2016, highlighting a progressive reduction of our direct carbon footprint through a system of ♻️Beyond Group goals



## CARE OF Wildlife

- 64 Learners and teachers received conservation lessons in 2019, with the aim not only to educate, but also develop an understanding of the interdependence of conservation and community empowerment
- 25 200 Hectares of rich biodiversity significantly influenced by ♻️Beyond Ngala Private Game Reserve (14 700 Ha) and Sabi Sand Nature Reserve (10 500 Ha)
- 414 000 ZAR contributed in annual park fees, July 2019 – March 2020



## CARE OF People

- 29 Years of compounded positive impact across 23 local communities
- 50 Million ZAR annual disbursements to Mpumalanga communities, 2018 – 2020
- 55 % Local community staff to total employees at our ♻️Beyond Mpumalanga lodges
- 272 CLEF tertiary education bursaries granted to 206 young Mpumalanga leaders through this legacy-building Wild Impact\* programme
- 28 Million ZAR local-procurement spend by ♻️Beyond Mpumalanga, 2018 – 2020
- 17 Million ZAR social infrastructure investment in collaborative, community-led projects
- 3.2 Million ZAR donor funding for Bilton High School, Thlvekisa, close to ♻️Beyond Ngala Private Game Reserve, in a community project spanning 7 years

DISCOVER NGALA PRIVATE GAME RESERVE

# Travel South Africa and beyond

South Africa has an excellent travel network that makes it easy to reach any destination, by air or road.



## GETTING TO NGALA PRIVATE GAME RESERVE

Federal Air offers daily scheduled flights from Johannesburg and Nelspruit to the Ngala Private Game Reserve airstrip, followed by an easy drive to both lodges.

Daily scheduled flights from Cape Town to Hoedspruit Airport are available, followed by a 2-hour road transfer to the reserve.

Connect Ngala Private Game Reserve to Johannesburg, Cape Town, the Sabi Sand Nature Reserve or Beyond Phinda Private Game Reserve – all flights route through either Nelspruit or Skukuza.

It's a 6–7 hour drive from Johannesburg, although driving is not recommended.

### TRAVEL TIMES

JOHANNESBURG							
✈️	5hrs 18mins (466,3 km) *2hrs 10mins (45mins layover)	KRUGER NATIONAL PARK - NGALA PRIVATE GAME RESERVE					
✈️	5hrs 22mins (452,1 km) *50mins	2hrs 4mins (89,4 km) *45mins	SABI SAND - SOUTH (SKUKUZA AIRPORT)				
✈️	6hrs 11mins (488,1 km) *2hrs 15mins	1hr 18mins (46,8 km) *45mins	1hr 51mins (80 km) Not available	SABI SAND - NORTH			
✈️	6hrs 35mins (533,8 km) *3hrs 25mins (1hr 25mins layover)	8hrs 48mins (657 km) *2hrs 10mins (20mins layover)	7hrs 34mins (590 km) *3hrs 20mins (50mins layover)	8hrs 40mins (636 km) *4hrs 45mins	PHINDA		
✈️	14hrs 14mins (1 397,8 km) *2hrs 10mins	19hrs 59mins (1 907 km) *3hrs 35mins	19hrs 33mins (1 849 km) *4hrs	20hrs 53mins (1 890 km) *4hrs	20hrs 31mins (1 830 km) *4hrs 35mins (45mins layover)	CAPE TOWN	

\*Airlink flights may include layovers ranging from 20 minutes to 2 hours depending on routing. Return flight times may differ for this reason.

## BEYOND LODGES

- KRUGER NATIONAL PARK**  
Ngala Safari Lodge  
Ngala Tented Camp
- PHINDA PRIVATE GAME RESERVE**  
Phinda Mountain Lodge  
Phinda Forest Lodge  
Phinda Rock Lodge  
Phinda Vlei Lodge  
Phinda Zuka Lodge  
Phinda Homestead



andBEYOND



#seewhatliesbeyond

[andBeyond.com](http://andBeyond.com)