



# STANLEY'S CAMP

AN A&K SANCTUARY

*Okavango Delta, Botswana*



*The Okavango Delta is home to big cats and big game*

# An authentic sanctuary on the enduringly dramatic Okavango Delta

The picture of a classic tented safari stay, Stanley's Camp is set on a private concession amid the abundant floodplains of Botswana's Okavango Delta. The camp excels at understated elegance, with a clever sustainable design that fosters an undeniable connection with nature. And what a show nature puts on here: giraffes striding across the savannah are a common sight from the sleek infinity pool; rare wild dogs and thousand-strong herds of buffalo might also be spotted nearby. Ten stylish guest tents deliver an authentic bush experience, with private decks for dawn-to-dusk game viewing. Walking safaris, night drives and mokoro excursions complete the immersive Okavango experience.

# Six Reasons to Choose Stanley's Camp



- 01
- 02
- 03
- 04
- 05
- 06



*Guests can relax on private decks*

Front-row views of the sublime landscapes of the Okavango – the largest inland delta on earth.



*Lions stalk across the delta plains*

This area is very big on the big cats, and excellent for wildlife generally.



*Stanley's Camp has an authentic feel*

Classic safari-style design with minimal environmental footprint.



*Discover the Okavango in a mokoro*

Seasonal excursions by mokoro (canoe) to explore the incredible wetland habitat.



*Walking safaris are a thrilling activity*

Located on a private concession, which means walking safaris and night drives are possible.



*Enjoy the camp's elegant interiors*

Just 10 luxury tents for an authentic, intimate experience – and a cooling infinity pool.

# The Camp



In true safari style, Stanley's Camp is designed to have minimal impact on its surroundings, but also give guests maximum authenticity on their luxury Botswana adventure. Set under the shade of mature ebony and sausage trees, its 10 elegant, tented suites are beautifully positioned to maximize the panorama of the delta beyond, with private wooden decks for added seclusion. Traditional and natural materials of canvas, linen, leather and timber are used in a contemporary way to create spoiling sanctuaries, all the while fostering an unrivalled connection with nature to place guests at one with the wild.

The main area – comprising a large, tented Explorer's Lounge and dining space, plus an outdoor bar – affords magnificent views over the Okavango floodplain in front of the camp, where big game regularly marches past. A knockout infinity pool in full sight of the natural splendor all around adds an extra luxurious touch to this wildly romantic camp, and is a brilliant bonus after a day out exploring the thrumming wetland habitat on the edge of the vast and game-rich Moremi Game Reserve.

*Natural materials are used stylishly*



*"Luxury, romance and the classic safari experience are all wrapped up in a stay at Stanley's Camp."*



*The tented structure roots guests in the surroundings*

# The Camp



## EXPLORER'S LOUNGE

When nature is all around, any rustle of a leaf could mean an animal sighting, so the Leica binoculars supplied to guests will come in handy, as will the interactive maps in the Explorer's Lounge, and the spotting scopes on the decks.

## SWIMMING POOL

Stanley's Camp features a striking rim-flow infinity pool with sensational views of the savannah. Watch wildebeest, hyena, impala, zebra and other animals at the watering hole in front of the area where the pool is located.

## BUSH BOUTIQUE

The curated selection of African-crafted items in the on-site Bush Boutique means guests can take home more than just memories from this incredible place – from colorful clothing to chic bags and jewellery.

## OUTDOOR BAR

With magnificent views over the Okavango Delta floodplain in front of the camp, the bar by the pool is just the spot for a refreshing drink or sundowner.

## TRADITIONAL BOMA

The open-air design means guests feel completely rooted in the extraordinary setting, as well as being cooled by breezes during the day and gathering around the firepit to swap tales at night.



CLOCKWISE FROM LEFT

*The camp is perfectly situated in a shaded spot  
Maps and books are available for would-be explorers  
Guests gather by the firepit*

# The Camp



Savannah views from the pool

The open-air bar is cooled by delta breezes

GPS Coordinates	GPS 19° 37' 33.58" S, 23° 16' 42.95" E
Open Year Round	Yes
Number of Rooms	10
Maximum number of guests	20
Child Policy	Children aged 6 and over are welcome. Children under 15 must share with an adult
Guide/Pilot Accommodation	Yes; 1
Wheelchair Accessible	No
Power Supply	Solar power with backup generator and inverter systems
WiFi Available	Yes, in all areas
Binoculars Provided	Yes; Leica binoculars provided for every guest
Camp Fenced	No
Credit cards Accepted	Visa, MasterCard
Currencies Accepted	USD, Pound, Euro and South African Rands
Swimming Pool	Yes

# The Tents



Stanley's Camp comprises just 10 authentic safari tents, each with a private deck with excellent views over the Okavango's unending pageant of wildlife. The traditional yet elegant design embeds guests in the sounds and sights of the bush, for a timeless and thrilling stay in this unique corner of Botswana. Canvas, linen, leather and timber provide the richly textured background for subtle artisanal touches such as locally woven basket lights and original artwork.

*Double vanities in the ensuite bathroom*

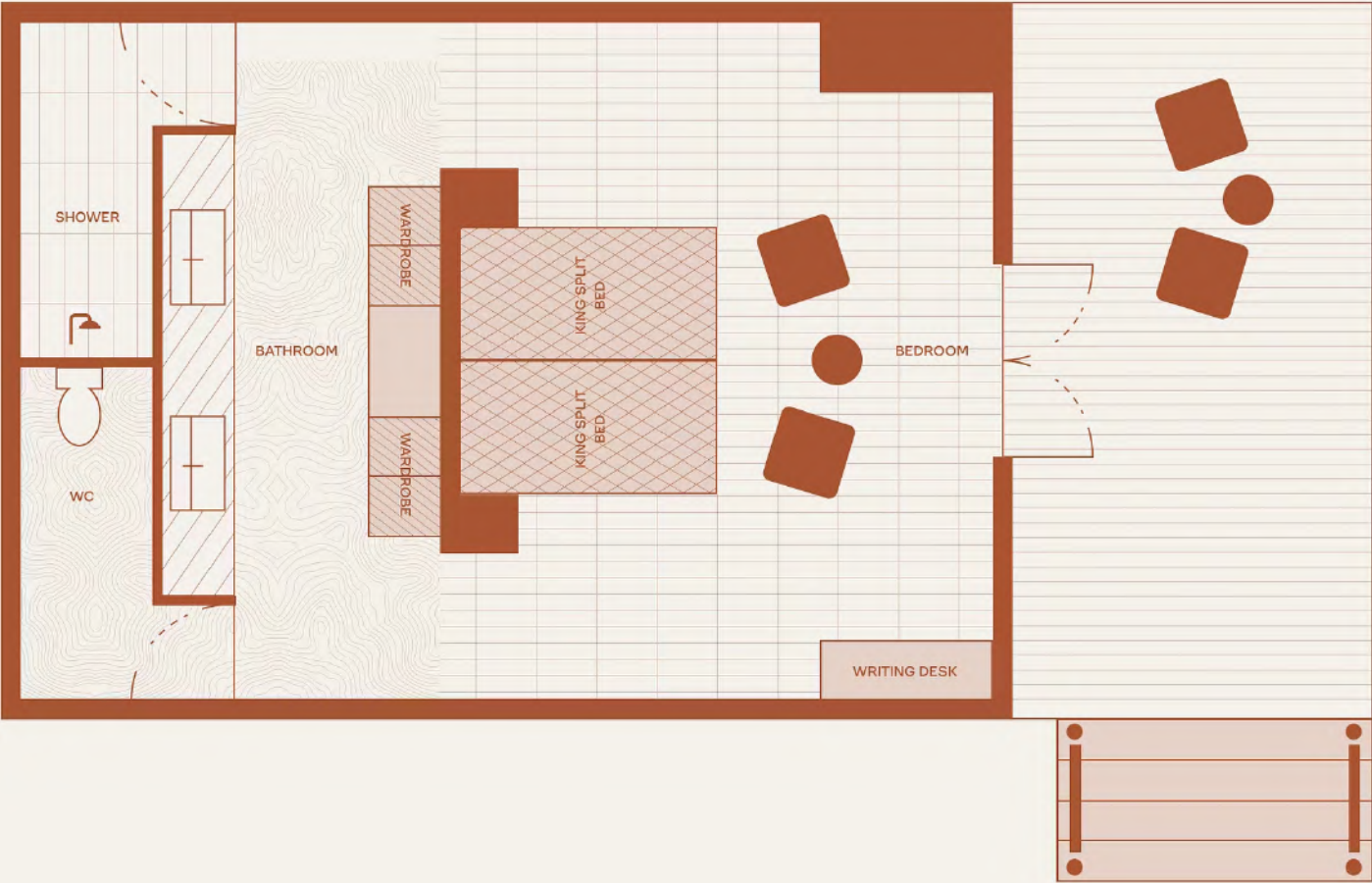


*"A connection to nature is cleverly stitched into the camp's low-impact design."*



*The boutique-meets-bush guest tents*

# The Tents



**LUXURY TENT | SLEEPS 2 | 68 SQM**

These classic safari style tents have well-stocked minibars and coffee stations, king-size beds with high-thread-count linens and mosquito netting, ensuite bathrooms with double vanities and rain showers, and private decks perfect for daydreaming, wildlife-spotting and, on special occasions, outdoor dining.

Room Size	68m2
Bed Configuration (King or Twin)	All rooms can be converted to a king or twins
Triple Rooms Available	Yes; subject to availability
Mini Bar	Yes
Tea and Coffee Station	Yes
Air Conditioning	No
Overhead Fan	Yes
Mosquito Net	Yes
Plug Type	Type G Plug, USB and USB Type C
Bath	No
Indoor Shower	Yes
Outdoor Shower	No
Hairdryer	Yes

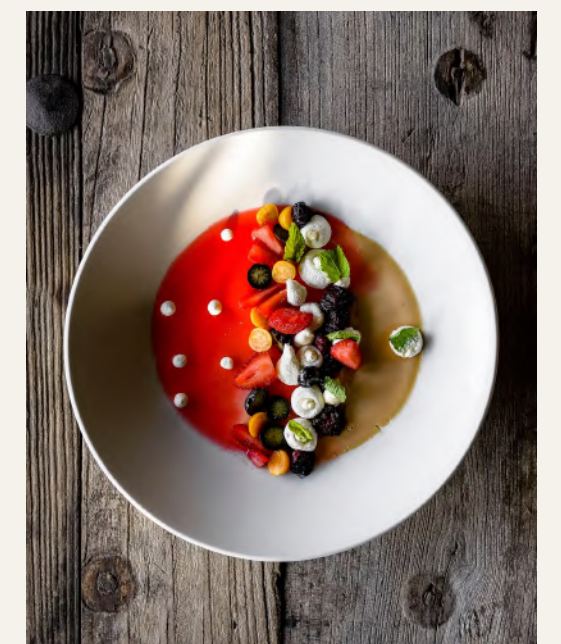
# Food & Drink



The brilliant culinary team at Stanley's Camp serve up safari-style cuisine with a local twist (skillet-seared Botswana beefsteak, perhaps) in the atmospheric tented dining space. While it's hard to beat the camaraderie of swapping wildlife-spotting tales over delicious, freshly cooked dishes with fellow adventurers, private dinners on guests' own deck or by the pool can also be arranged on request, setting the scene for a romantic evening under the stars. As with all A&K Sanctuary lodges and camps, all food and drink is included (including premium brands).

- A continental or English breakfast is served at the camp before the morning game drive.
- Coffee, tea, pastries and biscuits are a welcome pit-stop out in the bush.
- Back at the camp, a leisurely safari-style lunch awaits in the shaded dining space.
- On afternoon and evening game drives, stops are made at specially selected spots for classic sundowners and canapés.
- Rounding off each day are pre-dinner drinks – perhaps a cocktail in the Explorer's Lounge or around the boma – followed by a three-course table d'hôte dinner with two or three choices per course.

*Food is delicately plated and delicious*



*Flickering candlelight gives a magical feel to the tented dining space*

# Camp Location



The largest inland delta on earth, Botswana's Okavango is a place like no other. This UNESCO-listed wetland habitat is a green oasis pulsing with life in the middle of the arid Kalahari Desert. Between May and September, the grassy plains usually flood and are transformed into a 5,800-square-mile tapestry of waterways, lagoons and islands, harboring animals along every stage of the food chain – from skulking lions to dazzles of zebras. Among the delta's estimated 9,000 species of flora and fauna, guests should keep their eyes peeled for elephant, hippo, giraffe, lion, leopard, cheetah, impala, zebra, wild dog, hyena, and buffalo herds that often exceed 2,000 in number.

*Welcome to an oasis in the Kalahari Desert*



Stanley's Camp is situated on a 260,000-acre private concession bordering the southern section of the Moremi Game Reserve, known for its resident and migratory bird life – look out for marabou storks, Egyptian geese, fish eagles, bee-eaters, and African skimmers. It was the first wildlife sanctuary created by the Batawana people, who historically hunted in the area, and continues to be protected by the local community. As a result, it's a habitat teeming with life. Because Stanley's Camp is on private land bordering the game reserve, night drives and walking safaris are allowed here, so an already thrilling safari experience is dialled up even more.



*Water constantly ebbs and flows in the delta*

# Getting There



Maun Airport to Stanley's Airstrip / Kasane Airport to Stanley's Airstrip

15-minute flight / 1-hour 30-minute flight



Stanley's Airstrip to the Camp

25-minute drive

Please note, luggage restriction for light aircraft is 20kg/44lbs per person in a soft-sided bag, including hand-luggage.

# Experiences



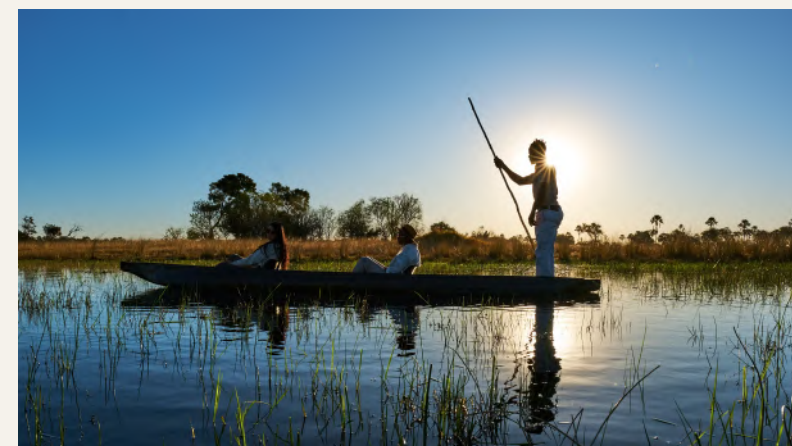
Anyone coming on safari will want to maximize the chances of seeing as much wildlife as possible. Due to its prime location on a private concession, Stanley's Camp offers a myriad of ways to do this. Twice-daily game drives plug guests into the Okavango Delta wilderness, where elephant, hippo, buffalo, giraffe, lion, leopard, cheetah, impala, zebra, wild dog and hyena roam. In the dry season, there's the option of walking safaris, while traditional mokoro canoes skim serenely over the water during the flood season – and helicopter flights give a bird's-eye view of it all. Night game drives may offer thrilling sightings of nocturnal animals. Between outings, guests can enjoy downtime in the convivial Explorers' Lounge, at the restaurant and bar and by the pool – or on their own private deck.



*Twice-daily game drives maximise time in the bush*

## GAME DRIVES

Expert-led game drives in the early morning and late afternoon take guests into the heart of this unique and biodiverse habitat. Morning is prime time to see predators on the move while hippos might be seen coming out of the water to graze in the afternoon.



*The Okavango is known for its traditional canoes*

## MOKORO EXCURSIONS

The most serene, authentic and environmentally friendly way to explore the greatest river delta on earth, season permitting, is to glide across it in a mokoro – the region's traditional, flat-bottomed, punt-like canoe.



*Guided walks give guests extra freedom to explore*

## WALKING SAFARIS

It's highly recommended that guests take advantage of Stanley's Camp's prime location in a private concession to join guided walks in the bush (weather permitting). All that's needed are some sturdy boots and a beady eye.

# Experiences



Anyone coming on safari will want to maximize the chances of seeing as much wildlife as possible. Due to its prime location on a private concession, Stanley's Camp offers a myriad of ways to do this. Twice-daily game drives plug guests into the Okavango Delta wilderness, where elephant, hippo, buffalo, giraffe, lion, leopard, cheetah, impala, zebra, wild dog and hyena roam. In the dry season, there's the option of walking safaris, while traditional mokoro canoes skim serenely over the water during the flood season – and helicopter flights give a bird's-eye view of it all. Night game drives may offer thrilling sightings of nocturnal animals. Between outings, guests can enjoy downtime in the convivial Explorers' Lounge, at the restaurant and bar and by the pool – or on their own private deck.



*Many of the delta's owls hunt at night*

## **NIGHT DRIVES**

As darkness falls, head out on a guided night drive for the opportunity to encounter the Delta's elusive nocturnal species. Using a spotlight, guides will help guests seek out wildlife including bush babies, porcupines and big cats on the move.



*Take to the skies for epic scenery*

## **HELICOPTER FLIGHTS**

While land and water excursions get guests within a whisker of the delta's wildlife, a fully personalized helicopter flight delivers swooping, uninterrupted views of its epic scale for exceptional photography opportunities. Note this is an additional cost.

# Wildlife & Nature

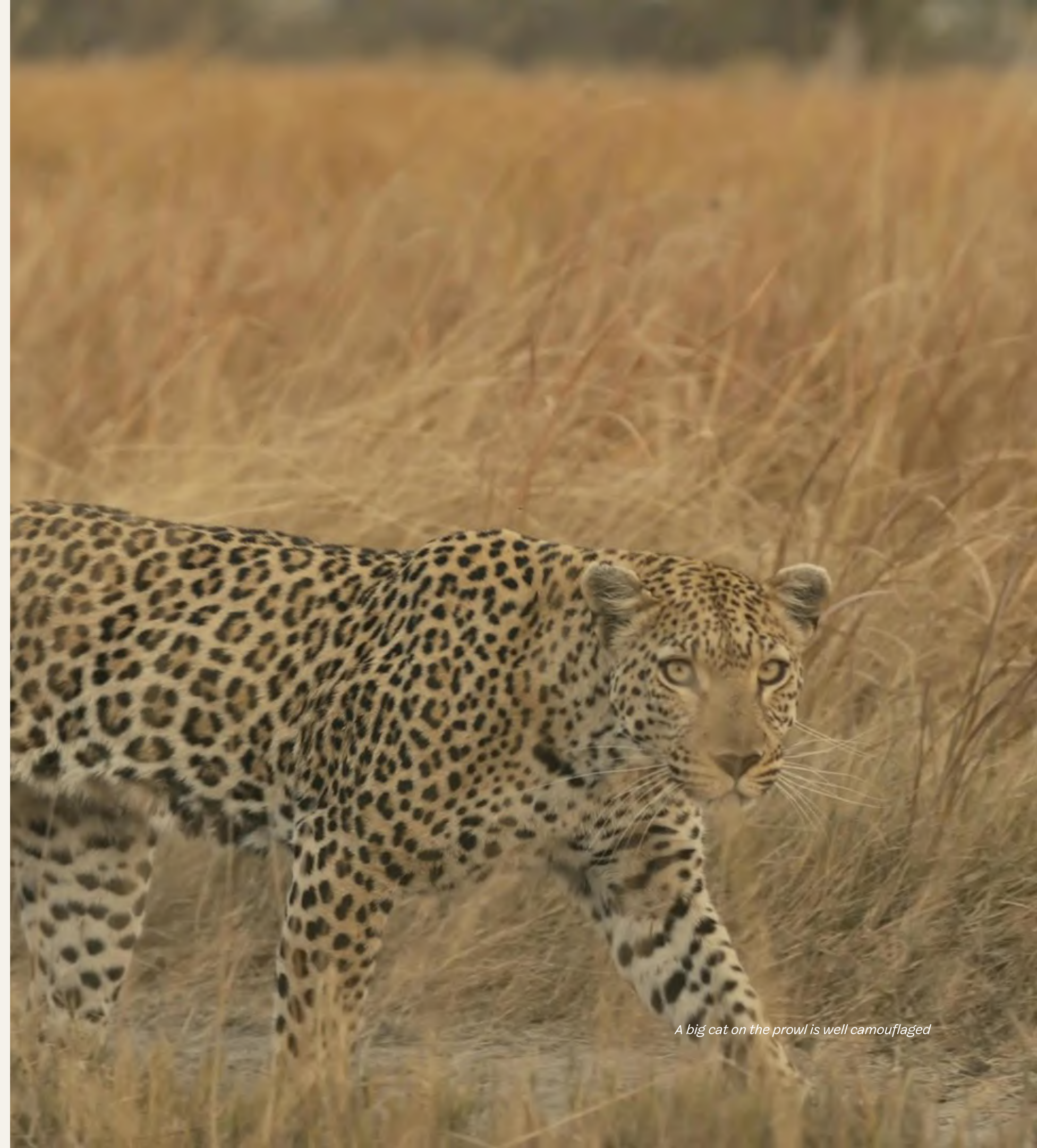
---

The biodiversity of this corner of Botswana is incredible, and a stay at Stanley’s Camp offers an unrivalled opportunity to witness it. The camp is set within a 260,000-acre private concession adjacent to the vast and game-rich Moremi Game Reserve, which itself accounts for some 40 percent of the protected area of the Okavango Delta. This sublime location means excursions in the wild are possible by day and by night.

Morning and afternoon game drives are the time to spot the larger creatures that call the delta home: lion, cheetah, elephant, hippo, buffalo, giraffe, impala and wild dog. Night drives offer a chance to see the animals that are most active after dark – from hyenas to honey badgers.

The delta is also a hotbed of birdlife, with around 450 resident and migratory species (between November and April is the best time to spot the latter). Technicolor sightings might include the bright blue plumage of the malachite kingfisher and the crimson-hued carmine bee-eater.

*Elephants are the biggest species in the Okavango*



*A big cat on the prowl is well camouflaged*

# Your Stanley's Camp Safari



*Encounter grazing herds on a game drive*

Days at Stanley's Camp deliver pulse-quickening adventure as well as serene moments to simply soak up the incredible nature all around. The camp's expert team of guides and support staff cleverly choreograph every detail – from action-packed morning game drives to post-dinner drinks under the stars in the outdoor bar.

## **A TYPICAL DAY MIGHT INCLUDE:**

- Wake-Up Call - Enjoy a tea or coffee on your own deck as the soft morning light illuminates the delta.
- Breakfast - A fresh, hearty breakfast served on the deck, with birdsong echoing from the trees.
- Morning Activity - Set out with binoculars primed to spot elephants, predators and perhaps a rare bird.
- Lunch - Return to the camp for a delicious lunch of safari-style dishes.
- Afternoon Activity - Another opportunity to explore with the expert guides.
- Drinks and Dinner - The moment to sit back and swap stories of the day's adventures over cocktails and a three-course dinner.

# The Details



## HONEYMOON, ANNIVERSARIES & SPECIAL OCCASIONS

Romance and luxury are woven into each of our stays, but our Stanley's Camp team adds an extra sprinkling of magic when it comes to special occasions. From a private candle-lit dinner by the pool to a floating breakfast or lunch set up in the water on a sandbank when the season permits, the team creates once-in-a-lifetime experiences that celebrate a visit to the unique and cinematic setting of the Okavango Delta.

## FAMILIES WITH CHILDREN

Stanley's Camp welcomes children aged 6 years and above. Children aged 15 years and younger are required to share with an adult, and are not allowed on walking safaris.

## INCLUSIONS

- All meals, non-alcoholic and alcoholic beverages (including premium brands)
- Return transfers from/to Stanley's Airstrip
- Game viewing activities including: game drives, night drives, walking safaris, mokoro excursions, and boating
- Emergency medical evacuation
- Laundry services
- Park fees

## EXCLUSIONS

- International and domestic flights, landing fees
- Road transfers to and from other camps and lodges
- Travel insurance, boutique purchases, gratuities, and all other items of a personal nature



*The pool deck is a pleasant sun-trap*



*Binoculars optimise game viewing opportunities*

# Travel Tips



## WHAT TO PACK

Clothing should be cool and comfortable; and colours should blend in with nature as much as possible. A fleece, sweater or warm jacket is advisable for morning and evening game drives. Long sleeves and long trousers for mornings and evenings due to mosquitoes. Sturdy and comfortable shoes are essential. A complimentary overnight laundry service is offered in the camp.

Accessories: Sunscreen, sunglasses and hats are essential. Binoculars and good cameras are an absolute must. The camp provides a torch as well as complimentary mosquito repellent and toiletries.

## HEALTH

Please discuss health precautions for your travel itinerary with a qualified health professional at least six weeks before departure. Those passing through countries which have been declared yellow-fever-infected areas must provide a Yellow Card, an international vaccination certificate, upon arrival in Botswana.

## MONEY & CREDIT CARDS

All extras can be paid for with Visa, Mastercard, and traveller's cheques. US dollars, British pounds, Euros and South African rands are also accepted; however, change will be given in the local currency.

## GRATUITY GUIDELINES

Tipping and gratuities remain entirely at your discretion.

*The camp's 4x4s tackle the terrain*





No two months are the same on the ever-shrinking, ever-expanding Okavango Delta. And while it's impossible to predict the weather, guests might find it helpful to learn how a visit to Stanely's Camp might differ from one week to the next: from the secret perks of the rainy season to the best time to explore on foot, or serenely in a canoe.



*Waterlilies flower at the start of the year*

## **JANUARY–MARCH**

This is a colorful season of flowering waterlilies and fruiting marula trees (a favorite of bull elephants). Walking safaris (when available) are a great way to appreciate the biodiversity up close. Short dramatic thunderstorms make for superb photography, while low visitor numbers mean a more private experience.



*Look out for wading hippos*

## **APRIL–MAY**

April is breeding season for various antelope, and males are often busy butting heads to impress females. As the flood waters from Angola begin to move through the delta (this varies every year), the migratory birds start to leave. This is the time when bigger creatures gather in herds: buffalo and breeding elephants congregate at the permanent waters.



*Mokoros (canoes) deftly navigate the delta*

## **JUNE–AUGUST**

As this is the northern hemisphere summer, the camp books up well in advance. Predators are drawn to the large herds gathering by the water. New channels appear as the inner delta begins to flood, bringing the opportunity for mokoro excursions. Be prepared for some chilly nights and bring a warm jacket for early-morning game drives.



No two months are the same on the ever-shrinking, ever-expanding Okavango Delta. And while it's impossible to predict the weather, guests might find it helpful to learn how a visit to Stanely's Camp might differ from one week to the next: from the secret perks of the rainy season to the best time to explore on foot, or serenely in a canoe.



*Predators are ever alert to prey*

**SEPTEMBER–OCTOBER**

The cycle of the seasons turns once more as the first migratory birds arrive and storks begin to nest. Water levels usually drop and predators home in on the herds of elephant and buffalo gathering at the ever-shrinking drinking sources. Game drives are rewarding as the grazed-down vegetation makes animals easy to spot.



*New life appears in the birthing season*

**NOVEMBER–DECEMBER**

Afternoon showers commence and animals disperse to feed on fresh vegetation – the vibrant greens make it a great time for photography. The beginning of the birthing season brings the possibility of witnessing the occasional kill as predators seek out the young. Birdwatchers and botanists are in their element now, with migratory bird numbers swelling and trees bursting with blooms.

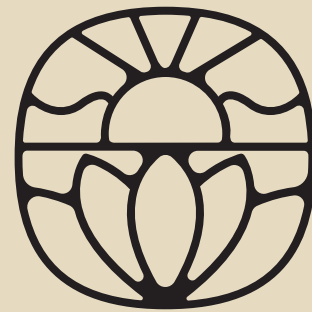


**JOURNEYS WITH PURPOSE**

The A&K Philanthropy nonprofit network now spans 24 countries on all seven continents, positively impacting hundreds of thousands of lives and helping preserve some of the world’s most precious ecosystems. Our initiatives focus on education, enterprise, health and environment, aiming to support and empower local communities to facilitate the protection of their surroundings, and to ensure that the people in the places where we travel are also benefitting directly from tourism.

*"As pioneers of the community-first approach to conservation, we continue to celebrate travel as a force for good."*

A&K Philanthropy strives to protect the natural habitat



A&K SANCTUARY