

QUICK FACTS



Open: March - January
(Check our website for exact dates)



5 safari tents
(3 twin, 1 king, 1 family tent).



Liwonde National Park, Malawi



All ages welcome



Wi-Fi in tents



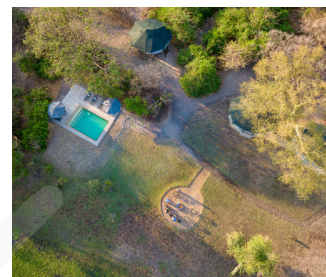
14 48 15.9 S 35 17' 03.8 E



[Download images](#)



[Visit webpage](#)



Kuthengo maintains a rustic charm, complemented by stunning views which are best appreciated from your private deck with a cold sundowner in hand, admiring the herds of waterbuck that frequent the camp area, milling about in the evening glow. You may be quite isolated from outside world, but we have everything you need; from a pool to indoor & outdoor dining, a cosy bar and an open air firepit.

THE CAMP

Facilities

- En-suite bathrooms and outdoor showers.
- Family tent has two inter-leading bedrooms and a shared bathroom located in the main bedroom.
- Plunge pool in main area.
- Evening Breeze air conditioning units in the tents. It cools the air within your mosquito net and not the entire room.
- There is limited cellphone reception for TNM & Airtel (local network in Malawi).
- The camp runs off solar power with a backup generator for cloudy days. The plugs (three square pin) here may only be used for lamps and charging equipment for mobile phones or cameras. Hairdryers cannot be used.

Activities

- Game drives, boating safaris & walking safaris.

Meals & Drinks

- The rate is inclusive of all local drinks & meals.
- We also offer a connoisseurs' wine & spirits list at an extra cost.
- Nut Allergies: While fully capable of catering for most dietary requests, we regrettably are unable to cater for people with severe nut allergies as we cannot guarantee a completely nut free environment.

Payment for extras

- All extras can be paid in cash (US\$, Euro & British Pounds).
- We do accept card payments with a 4.5% surcharge.
- US\$ bills – we only accept the new notes with large heads.

Tipping

It's not expected but always enthusiastically received if you are happy with the service. Please always give tips for the camp/lodge staff to the management to be shared out and please tip your guide individually. When asked 'how much' we say for camp/lodge staff from US\$5 per person per night and for guides the same again.

Special Occasions

If you/your travel partner are celebrating a special occasion, like a birthday or anniversary, let us know—we'd love to make it extra special!

TRAVEL INFORMATION

LILONGWE AIRPORT				
4.5 - 5 HOURS	PUMULANI LODGE			
5 - 5.5 HOURS	2.5 - 3 HOURS	KUTHENGO CAMP		
6.5 - 7.5 HOURS	6 - 7 HOURS	5 - 6 HOURS	MKULUMADZI LODGE	
5 - 6 HOURS	4 - 5 HOURS	3 - 4 HOURS	2 HOURS	BLANTYRE AIRPORT

From South Luangwa in Zambia it is a 1-hour charter flight to Lilongwe where you will clear immigration and continue on a 5-5.5 hour road transfer or 1 hour flight as above. The transfer to the camp is a 20 minute drive with the possibility of some game viewing along the way.

A high clearance vehicle is needed when driving through the park. Entry is from 6 AM to 6 PM, with boat transfers available up until 5 PM. Late arrivals must use the main gate with prior arrangement, and it will incur a \$50 fee per trip.

Travel Insurance & Health

- We strongly recommend visitors get full travel insurance.
- We recommend that visitors to Malawi take malaria prophylactics - consult your doctor first.
- It is advisable to know your blood group type in case of an emergency.

ADDITIONAL INFORMATION

Photography & Film

- Please be sensitive when photographing or filming local people, their villages, public buildings and people in uniform. Ask the guide to get permission first.
- Drones are not allowed to be used in the park.

What to bring

- You should always travel with soft bags not hard suitcases (not only for the smaller aircraft but also to fit into vehicles).
- Important items to bring along: Sunscreen, hat, good closed walking shoes, natural-coloured, safari-style clothing that can be layered - nothing bright, a swimming costume, all charging cables and adaptors, binoculars, camera.
- Depending on which time of the year you visit, a warm jacket and some gloves if it's during the winter months.

Climate

The Emerald Season (January–March) is a time of regrowth, with breeding birds, newborn wildlife, and mostly nighttime rainfall. April and May bring clear, warm days, occasional storms, lush green grass, and migrating birds departing. June to August is the dry winter season with cool nights, warm days, and easier game viewing as the grass dies back. From September to December, temperatures rise, rains begin, new growth emerges, and newborn animals appear, accompanied by brief insect bursts and humid conditions.

