



&BEYOND

DISCOVER

# &Beyond Phinda Private Game Reserve







# Seven worlds of wonder



The iconic Phinda Private Game Reserve (pronounced Pin-duh) encompasses an impressive 29 866 hectares (73 800 acres) of protected wildlife land in KwaZulu-Natal, South Africa. Showcasing one of the continent's finest game viewing experiences, the reserve is home to Africa's Big Five, and more than 436 bird species.

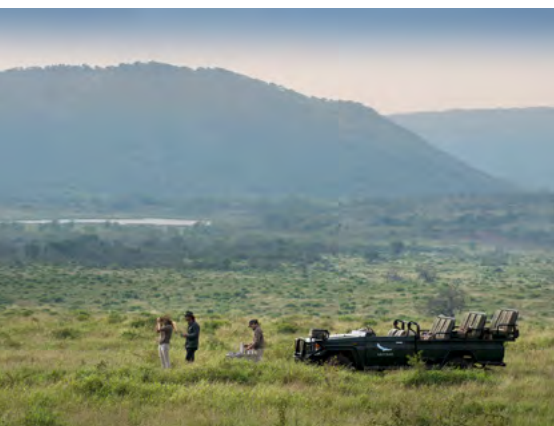


## DISCOVER ♻️ BEYOND PHINDA PRIVATE GAME RESERVE

---

# Why visit Phinda?

With its seven distinct habitats, Phinda is often described as ‘Seven Worlds of Wonder’, and is situated in close proximity to the unspoiled beaches and spectacular coral reefs of the Indian Ocean, offering an unmatched combination of bush and beach adventures.



# 1

### EXCLUSIVE GAME VIEWING

29 866 hectares (73 800 acres) of private traversing across seven distinct habitats allows for a great diversity of landscapes and exclusive game viewing. Limited number of vehicles at sightings and sensitive off-roading practices affords close-up sightings of Big Five and other rare and iconic wildlife.

---



# 2

### ICONIC WILDLIFE SIGHTINGS

♻️ Beyond Phinda is home to Africa's Big Five (lion, leopard, elephant, buffalo and rhino), as well as more than 436 bird species. The reserve is particularly well known for close-up sightings of the elegant yet elusive cheetah, as well as the rare black rhino. The sand forest is home to the shy suni and the rare red duiker, two tiny antelope that are seldom encountered elsewhere.

---



# 3

### FINEST GUIDES AND SAFARIS

Highly knowledgeable ♻️ Beyond-trained guides with the ability to do night drives, and other specialist safaris such as walking, tracking, photography or birding. Safaris can be tailored for private groups, families or specialist interests.

---



# 4

### LIFE-CHANGING EXPERIENCES

A variety of incredible adventures are available, including twice-daily game drives, nature walks, conservation and community experiences, sleepouts, village visits, night drives, specialist safaris, as well as nearby ocean activities.

---

DISCOVER &BEYOND PHINDA PRIVATE GAME RESERVE

# Why travel with &Beyond?

## 1 TRAVEL WITH HEART

Our core ethos of 'Care of Land, Wildlife, and People' drives all that we do. When you travel with us you make a meaningful contribution to the preservation of our world's cultures and wildlife and leave with an opportunity to gain first-hand experience in some of our conservation and community initiatives.

## 2 IN OUR HANDS

We are on call 24/7 to assist you throughout your journey. Over 2 000 &Beyonders, including guides and ground logistic teams on three continents, means that you are in our hands from the moment you arrive to the moment you leave. Additionally, we offer a personal global concierge service that is only a phone call away should you require any assistance at any point during your trip.

## 3 FINEST GUIDES

We operate three ranger training schools and are renowned for having the most highly trained, professional and knowledgeable guides, rangers, naturalists and trackers, who offer cultural insights as well as interpretive wildlife experiences.

## 4 TRAVEL EXPERTS

Big or small we are all about tailoring trips around your specific interests and expectations. Our expert travel specialists are able to personalise a range of experiences for individual travellers, groups, families, wedding parties, and special interest groups.

## 5 PERFECT MOMENTS

With journeys lovingly crafted of perfect moments, you will return from an &Beyond adventure feeling that nothing will take your breath away quite like this ever again. Our collection of signature experiences are often exclusive to &Beyond, ensuring a unique adventure.



Wow! It so far exceeded my expectations that I am speechless. Every day was a new discovery.



&BEYOND GUEST

## DISCOVER &BEYOND PHINDA PRIVATE GAME RESERVE

# Travel South Africa and beyond

South Africa has an excellent travel network that makes it easy to reach any destination, by air or by road.

## GETTING TO PHINDA

Federal Air offers daily scheduled flights directly from Nelspruit to Phinda Private Game Reserve. Airlink offers daily flights from Johannesburg to Nelspruit.

Connect Phinda Private Game Reserve to Johannesburg, Cape Town, Ngala Private Game Reserve, Kirkman's Kamp, northern Sabi Sand Nature Reserve (Londolozi and Ulusaba) in South Africa or to Vilanculos in Mozambique and Livingstone in Zambia via Airlink. All flights route through either Johannesburg, Nelspruit, or Skukuza in South Africa, where layovers may vary.

Private charters from anywhere in South Africa can be arranged to Phinda Private Game Reserve's airstrip.

More cost-effective routes include a commercial flight to Richards Bay, followed by a two-hour scheduled road transfer.

It is seven-hour drive from Johannesburg on good roads in a two-wheel drive vehicle

It is a three and a half-hour drive from Durban on good roads in a two-wheel drive vehicle.



## TRAVEL TIMES

### JOHANNESBURG

 5hrs 18mins (466,3 km) *2hrs 10mins (45mins layover)	KRUGER NATIONAL PARK - NGALA PRIVATE GAME RESERVE			
 5hrs 22mins (452,1 km) *50mins	2hrs 4mins (89,4 km) *45mins	SABI SAND - SOUTH (SKUKUZA AIRPORT) - KIRKMAN'S AND TENGILE		
 6hrs 11mins (488,1 km) *2hrs 15mins	1hr 18mins (46,8km) *45mins	1hr 51mins (80 km) Not available	SABI SAND - NORTH	
 6hrs 35mins (533,8 km) *3hrs 25mins (1hr 25mins layover)	8hrs 48mins (657 km) *2hrs 10mins (20mins layover)	7hrs 34mins (590 km) *3hrs 20mins (50mins layover)	8hrs 40mins (636 km) *4hrs 45mins	PHINDA
 14hrs 14mins (1 397,8 km) *2hrs 10mins	19hrs 59mins (1 907 km) *3hrs 35mins	19hrs 33mins (1 849 km) *4hrs	20hrs 53mins (1 890 km) *4hrs	20hrs 31mins (1 830 km) *4hrs 35mins (45mins layover)
				CAPE TOWN

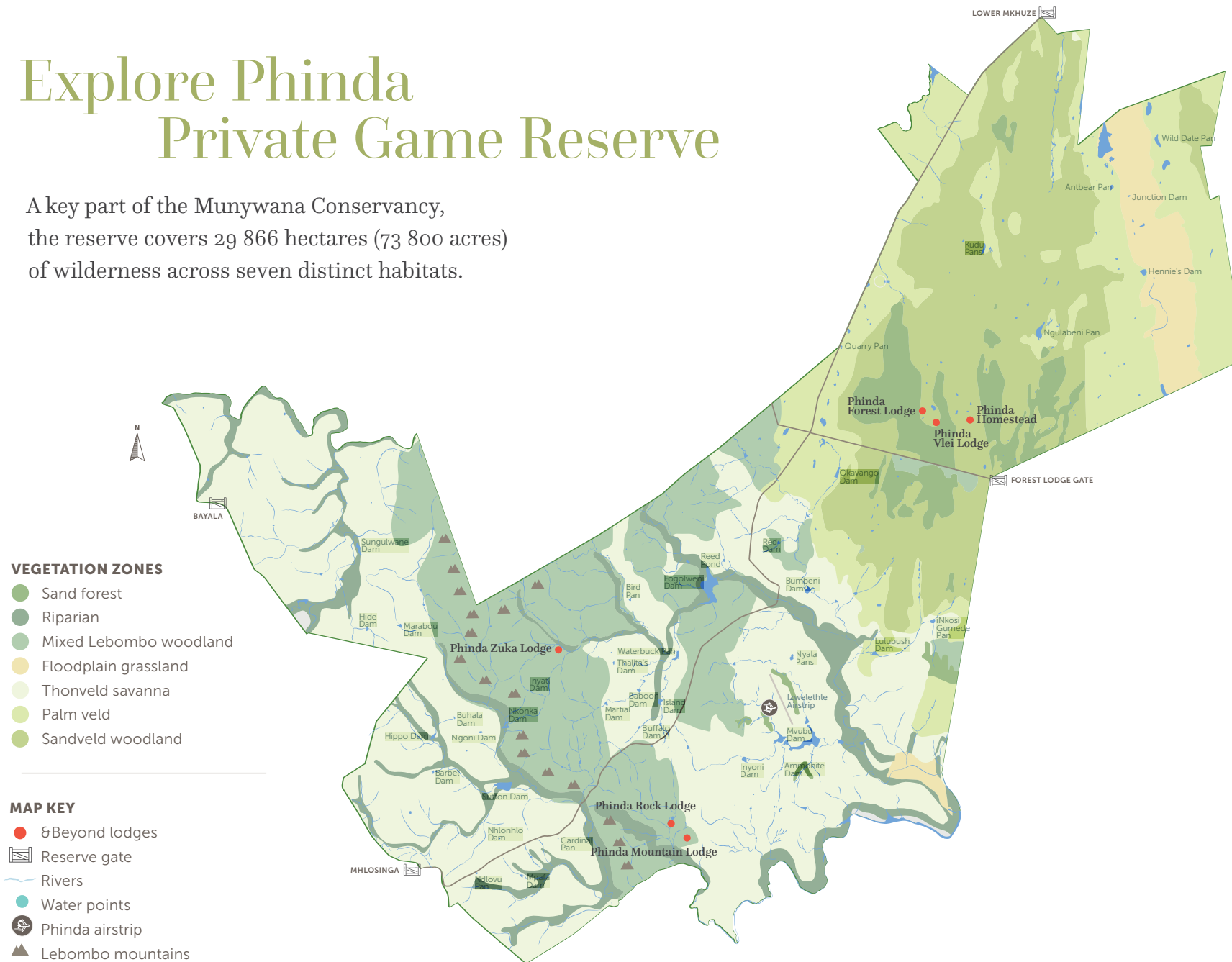
\*Flights may include layovers ranging from 20 minutes to 2 hours depending on routing. Return flight times may differ for this reason.

## &BEYOND LODGES

- KRUGER NATIONAL PARK**  
Ngala Safari Lodge  
Ngala Tented Camp
- SABI SAND NATURE RESERVE**  
Kirkman's Kamp  
Tengile River Lodge
- PHINDA PRIVATE GAME RESERVE**  
Phinda Mountain Lodge  
Phinda Forest Lodge  
Phinda Rock Lodge  
Phinda Vlei Lodge  
Phinda Zuka Lodge  
Phinda Homestead



A key part of the Munywana Conservancy, the reserve covers 29 866 hectares (73 800 acres) of wilderness across seven distinct habitats.



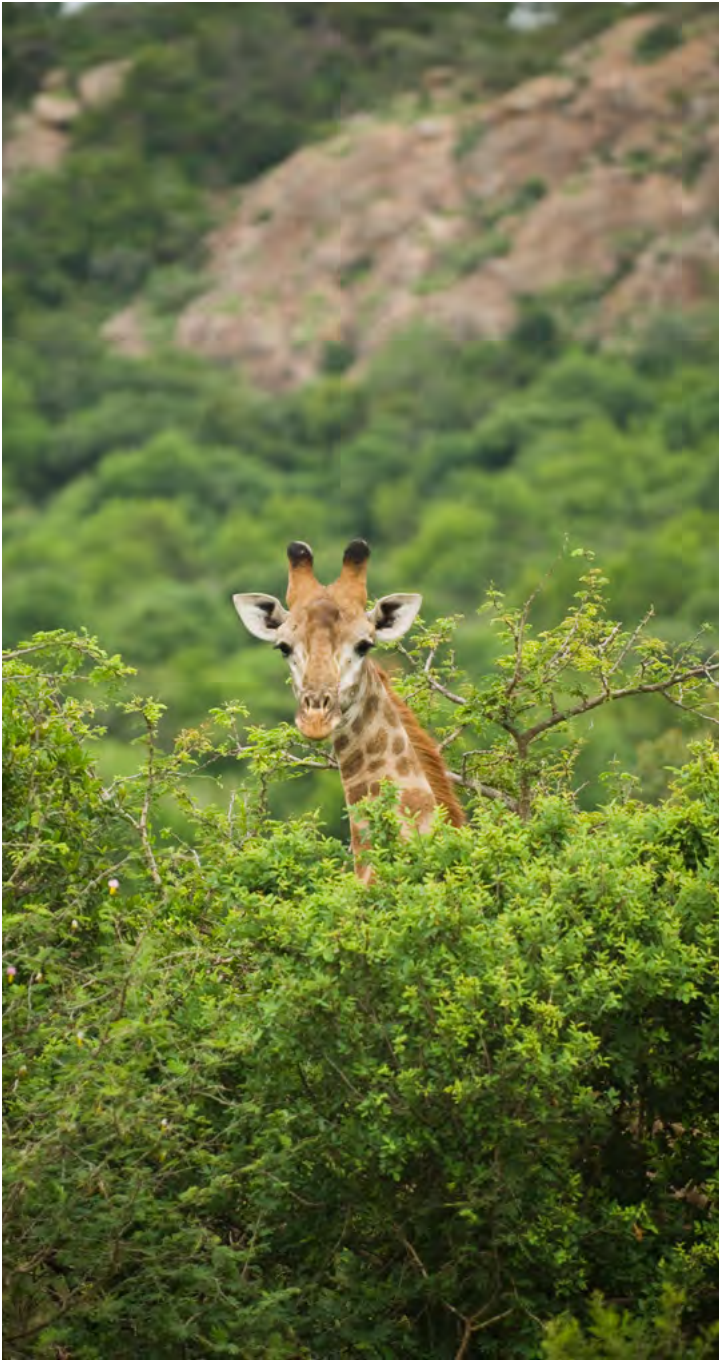
DISCOVER &BEYOND PHINDA PRIVATE GAME RESERVE

# Regional information

Altitude	48 - 112 m (157 - 367 ft)
Malaria area	The reserve is situated in a low-risk malaria area
Airstrip / Helipad	The Phinda airstrip is not registered; coordinates are 27° .51.36'S and 32° .18.48'E
GPS coordinates	27°46.657'S and 32°20.942'E
Best time to travel	Game viewing and climate is excellent year-round
Weather	Subtropical climate with hot, humid and wet summers from September to April and warm to cool and dry winters from May to August
Rainfall	Rainfall averages 1 000 mm (39 in) per annum. Much of the rainfall comes in the form of short, intense afternoon thundershowers. Rain can be expected throughout the year
Temperature averages	Summer: daytime temperatures average between 25 - 35°C / 68 - 95°F

**The staff took great care of everyone in the camp. The food was amazing, our driver was spectacular, and there were animals everywhere.**”

&BEYOND GUEST







BEYOND

DISCOVER PHINDA PRIVATE GAME RESERVE

# Adventures of a lifetime

Enjoy an unmatched combination of  
bush and beach adventures with a wide  
array of wildlife experiences, cultural  
encounters, and marine explorations.



## DISCOVER &BEYOND PHINDA PRIVATE GAME RESERVE

Adventures of a Lifetime

# Safari experiences

An African safari is an experience of a lifetime, and there is so much on offer at &Beyond Phinda – from twice-daily Big Five game drives, to a range of private and specialist experiences.



# 1

### SAFARI GAME DRIVES

Enjoy twice-daily game drives that set off early in the morning or late in the afternoon (continuing after nightfall), in the company of expert safari guides and local trackers who will do their best to ensure that all your wishes are met. In addition to the Big Five (lion, leopard, rhino, elephant and buffalo), each safari features an iconic set of wildlife and some of KwaZulu-Natal's endemic species.

*Included in the rate*



# 2

### PHOTOGRAPHIC SAFARI

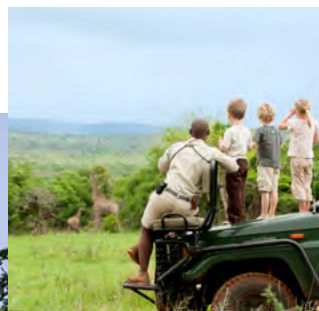
Designed for photography enthusiasts, our expert guides will use their extensive experience in wildlife, birding and landscape photography to help you get the shot of a lifetime by providing advice on shutter speed, lenses, filters, angles, lighting and so much more. Combining their understanding of animal behaviour with their photography skills, they will help you plan every step of your safari. A fully-equipped photographic safari vehicle fitted with state-of-the-art camera mounts is available and ensures exclusivity during your experience.



# 3

### BIRDING SAFARIS

Birding safaris are just one of &Beyond's many matchless private safaris that can be personalised for any small group. Accompanied by one of &Beyond's specialist birding guides, set out in search of the nearly-436 bird species that inhabit Phinda's seven diverse habitats including some of the more well-known ones, from the Rudd's apalis to Neergard's sunbird or narina trogon.



# 4

### FAMILY SAFARI

Phinda offers a host of entertaining activities for children aged 3–12 years, bringing alive the magic of Africa. Whilst on a family safari, you can rest assured that your children will always be safe and well cared for (both on and off game drives). Every minute is supervised by our guides and lodge staff, who provide hours of amusement and invaluable information to the children in their care.



# 5

### PRIVATE GAME DRIVES

A private safari at &Beyond Phinda Private Game Reserve allows you to explore the reserve at your own pace while focusing on your special interests. With your own dedicated ranger and tracker team, in your own private 4x4 safari vehicle, &Beyond's exclusive safaris let you create your very own tailor-made wildlife adventure.



# 6

### SLEEPOUT UNDER THE STARS

Enjoy a magical setting in the middle of the bush – comfortable beds with full duvets and warm blankets, twinkling lanterns hanging from the trees. Be welcomed with sundowner drinks while your guide prepares a delicious meal on the fire. Recreate the day's adventures around the fire, and fall asleep under the starry sky to the sound of hyena calling in the distance, secure in the knowledge that an armed guard will patrol the site by night.

*All specialist safaris (except your included twice-daily game drives) are subject to availability of a specialist guide and tracker. All activities are weather dependent. Certain activities are subject to an additional cost.*

## DISCOVER &BEYOND PHINDA PRIVATE GAME RESERVE

Adventures of a Lifetime

# Guided walks and cycling experiences

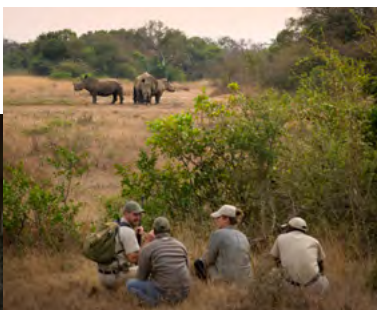
A guided nature walk or cycle is a magical alternative to a Big Five game drive. This adventure makes full use of all your senses, allowing you a deeper connection with the African bush.



# 1

### NATURE WALKS

As part of a game drive, or a few hours over the middle of the day, a nature walk is an opportunity to connect with the African bush and experience it on the same level as its animal inhabitants. Watch birds, explore a dry river bed, walk in the footsteps of zebra or giraffe, sit in stillness in the shade of an ancient tree, unravel the stories behind animal tracks, or simply stretch the legs.



# 2

### BIG GAME VIEWING WALKS

Led by an expertly-trained ranger and tracker team, a Big Game Viewing Walk offers the chance to track and view certain Big Five animals on foot. Done in such a way that the animals never know that you are there, Big Game Viewing Walks ensure an undisturbed natural experience viewing these creatures in their natural habitat while ensuring safety, as they never feel threatened by your presence.



# 3

### SPECIALIST WALKING SAFARIS

Enjoy the excitement of a Big Game Viewing Walk, the tranquillity of a Nature Walk, or any combination of the two, as your specialist ranger and tracker tailor your experience to suit your preferences. Whether it be to follow an animal for hours or discover the unique plant species growing on the reserve, a Specialist Walking Safari offers the opportunity to experience Africa at its wildest and most personal.



# 4

### BLACK RHINO TRACKING

Tread along the very paths black rhinos roam free on, and witness their lives from a careful distance. The slow pace of the walk and the interpretive skills of the experienced guide and tracker opens your eyes to a new and fascinating world. Learn how to follow rhino tracks, recognise rhino middens and scratching posts, and follow the signs of the bent trees and broken grass blades, searching for rhino in the company of wildlife professionals.



# 5

### E-BIKING ADVENTURE

Cycle through the endangered sand forest on a battery power assisted e-bike that gives a boost via a throttle to make pedalling a little easier. There are four distinct routes available ranging from 5 km to 22 km (3 mi to 13 mi) to suit a range of fitness and skill levels. This adventure is guided by your ranger, and a specialist biking guide, so you can feel completely at ease. Minimum age 12 years.

*The safety of our guests is paramount and only the most highly trained and qualified &Beyond guides host these walking and cycling experiences.*

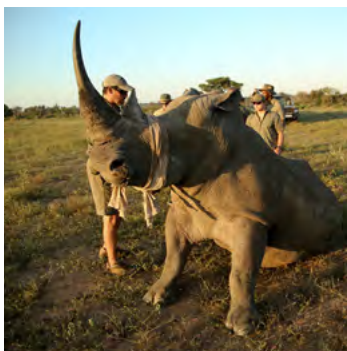
*All specialist safaris are subject to availability of a specialist guide and tracker. All activities are weather dependent. Certain activities are subject to an additional cost.*



DISCOVER &BEYOND PHINDA PRIVATE GAME RESERVE  
Adventures of a Lifetime

# Conservation

## EXPERIENCES



# 1

### RHINO CONSERVATION

This adventure allows guests to participate in either the capture and darting of a black or a white rhino while the veterinary team notches the sleeping animal's ear for research and security monitoring; or to assist with the painless removal of both rhino horns in order to ensure their survival and protection against poachers.



# 2

### PANGOLIN CONSERVATION

Participate in a privately guided pangolin research and monitoring experience, and you'll be supporting the conservation of the world's most trafficked mammal. In this interpretive and exclusive activity, guests will join a researcher as they locate a pangolin, does a general health check, and downloads critical research data from the UHF tag attached to each pangolin.



# 3

### ELEPHANT CONSERVATION

Have the opportunity to witness either an elephant collaring, where guests change of the sleeping pachyderm's radio collar, or to witness an elephant contraception, where Phinda's conservationists actively manage their burgeoning elephant population.

# Cultural

## EXPERIENCES



# 1

### ZULU VILLAGE VISIT

Be invited into an authentic Zulu homestead, visit the training school of a local sangoma, or traditional healer, and shop for exquisite handicrafts in the community surrounding &Beyond Phinda. Get a glimpse into the rituals of daily life and see how tribal culture and tradition affect rural Zulu villagers in the modern world, while helping them to gain an income.



# 2

### LOCAL COMMUNITY VISIT

Embark on an insightful experience with Wild Impact\* and gain first-hand knowledge of the their various projects, aimed at improving education, healthcare and access to water, as well as the development of local businesses in the area. You will have the opportunity to visit projects in the Mduku and Mngobokazi communities, including the Khulani Special School, the Mduku Clinic, and the Mbhedula Craft Market.

## DISCOVER &BEYOND PHINDA PRIVATE GAME RESERVE

Adventures of a Lifetime

---

# Ocean experiences

Adding to Phinda's wildlife charms, the marine diversity of nearby Sodwana Bay is easily accessible, with exceptional scuba diving, fishing and even turtle watching listed as some of its main attractions.



# 1

### OCEAN SAFARI

Whilst enjoying the exceptional Big Five at Phinda, why not treat yourself to an Ocean Safari that offers a wonderful opportunity to encounter some of South Africa's beautiful marine life as well. This exciting adventure, aboard an inflatable vessel and in the company of a certified dive master, offers the prospect of encountering dolphin and snorkelling amidst flourishing reefs, plus the chance to view humpback whale (seasonal).

---



# 2

### MAPUTALAND BEACH ADVENTURE

The vast sandy beaches of the Maputaland coastline provide a beautiful setting for this halfday beach outing. There is ample time for guests to soak up the sun, splash in the warm waters of the Indian Ocean, relax with a good book, play beach games such as bat and ball, take leisurely walks along the shoreline, or snorkel alongside Jesser Point (a protected marine reserve) with its diverse and colourful marine life.

---



# 3

### TURTLE NESTING ADVENTURE (SEASONAL)

For four months during the southern hemisphere summer, the enormous leatherback and loggerhead turtles emerge from the Indian Ocean at Sodwana Bay to lay their precious eggs in the sand. Set out on a thrilling night-time adventure along the beach in search of these reptilian animals as they come ashore to dig their nests.

---



# 4

### INDIAN OCEAN SCUBA SAFARIS

Diving the reefs of Sodwana Bay allows you to experience a portrait of marine diversity, with approximately 1 200 species of fish and spectacular coral formations. Guests wishing to participate must have dived in the last six months and have an Open Water 1 NAUI or PADI dive qualification.

---



## DISCOVER &BEYOND PHINDA PRIVATE GAME RESERVE

Adventures of a Lifetime

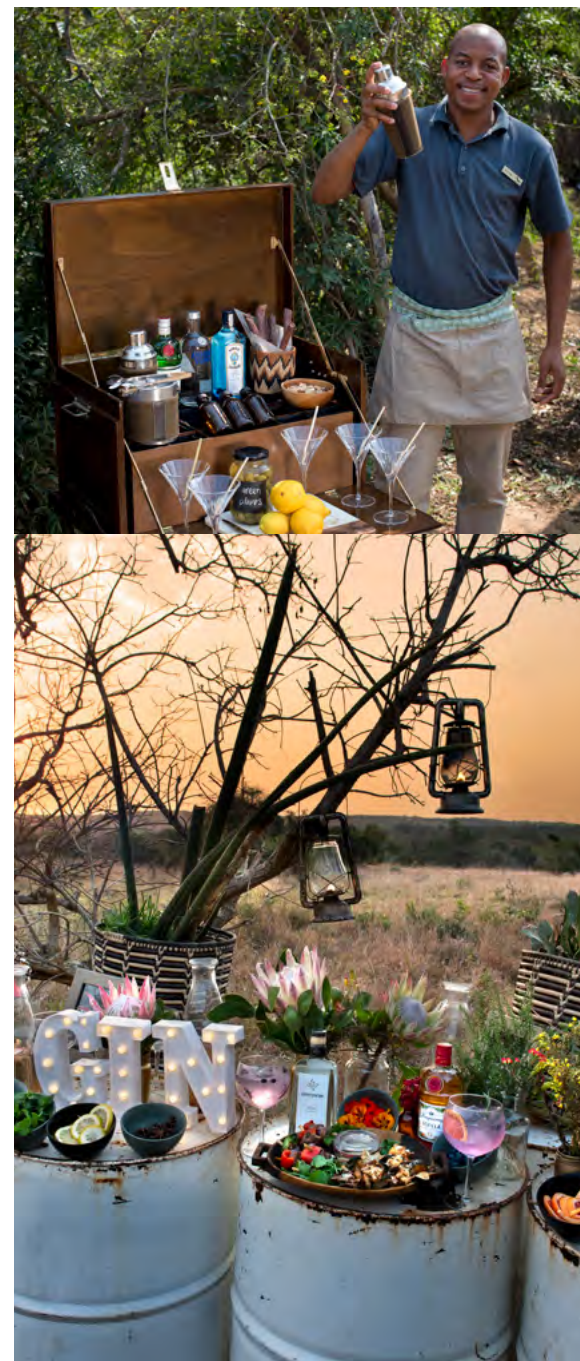
# Year-round activities

- |                               |                                      |                                     |
|-------------------------------|--------------------------------------|-------------------------------------|
| ✓ Game and bird viewing       | ✓ Boma dinners & bush dining*        | ✓ Pangolin conservation experience* |
| ✓ Night drives                | ✓ Sleepout under the stars*          | ✓ Zulu village visit                |
| ✓ Private game drives         | ✓ Safari Shop & Ardmore gallery      | ✓ Local community visit             |
| ✓ E-biking*                   | ✓ Healing Earth wellness treatments  | ✓ Maputaland beach adventure        |
| ✓ Nature walks*               | ✓ Weddings                           | ✓ Ocean safari*                     |
| ✓ Specialist walking safaris* | ✓ Black rhino tracking               | ✓ Indian ocean scuba safaris*       |
| ✓ Big game viewing walks*     | ✓ Rhino notching experience*         |                                     |
| ✓ Family safaris              | ✓ Rhino dehorning experience*        |                                     |
| ✓ Birding safaris             | ✓ Elephant collaring experience*     |                                     |
| ✓ Photographic safaris        | ✓ Elephant contraception experience* |                                     |

*\*All activities are weather dependent.  
Certain activities are subject to an additional cost.*

Eyes full of tears and hearts full of happiness in the best, time-honoured &Beyond traditions. Every detail meticulously planned and executed. It is impossible to exaggerate the brilliance of the experience you have given us. ”

&BEYOND GUEST





## DISCOVER &BEYOND PHINDA PRIVATE GAME RESERVE

Adventures of a Lifetime

# WILDchild

&Beyond Phinda Private Game Reserve offers a range of fascinating and entertaining activities for children aged 3–12 years, bringing alive the magic of Africa. Whilst on a family safari, you can rest assured that your children will always be safe and well cared for (both on and off game drives). Every minute is supervised by our guides and lodge staff, who provide hours of amusement and invaluable information to the children in their care.

## WHY WE LOVE &BEYOND'S FAMILY SAFARIS:

- Special WILDchild programme for children aged 3–12 years
- Each WILDchild receives a backpack filled with age-appropriate goodies
- Activities are seasonal and include bark rubbing, bug collecting, frog safaris, 'poo walks', baking with the chef and more
- Special children's menus available
- Childminding services available at additional cost

## CHILD POLICY\*

0-2 years	Permitted on game drives at ranger's discretion. Not permitted on walks outside of the lodge.
3-11 years	Permitted on game drives. Not permitted on walks outside of the lodge.
12-16 years	Not permitted on walks outside of the lodge
16 years and above	Permitted on game drives, nature walks and Specialist Walking Safaris.

*\*The child policy applies to children participating on game drives when staying in a Family Suite or Family Cottage only. Private vehicles are included only at Mountain Lodge.*





DISCOVER &BEYOND PHINDA PRIVATE GAME RESERVE  
Adventures of a Lifetime

# WILDchild

## FAMILY ACCOMMODATION

Phinda Mountain Lodge	Children welcome WILDchild programme 3 Family Cottages (consisting of 2 interleading Cottages each) – max. 2 adults and 2 children 1 Family Suite (2 adult rooms and 2 child rooms) – max. 4 adults
Phinda Forest Lodge	Children welcome WILDchild programme 1 Family Suite (consisting of 2 interleading Suites) – max. 2 adults + 2 children Children in Suites (max. 2 guests per Suite) No triple rooms available
Phinda Vlei Lodge	No children under 12 years No WILDchild programme No triple rooms available
Phinda Zuka Lodge	Children welcome WILDchild programme 1 Family Suite (consisting of 1 Suite with a children's bedroom) – max. 2 adults + 2 children Children in Suites (max. 2 guests per Suite) No triple rooms available
Phinda Rock Lodge	No children under 12 years No WILDchild programme No triple rooms available
Phinda Homestead	Children welcome WILDchild programme Additional children's room available with twin beds Extra private vehicle may be required No triple rooms available

Please note the lodges are not fenced off, therefore, children are required to have an adult accompanying them at all times.







DISCOVER PHINDA PRIVATE GAME RESERVE

# Lodge overview





DISCOVER BEYOND PHINDA PRIVATE GAME RESERVE  
Accommodation Overview

# Our lodges on Phinda

## BEYOND PHINDA MOUNTAIN LODGE

Poised majestically on a mountain crest, Mountain Lodge offers exceptional views over the entire reserve, as well as a warm, family-friendly atmosphere. Glamorous guest areas offer a dramatic vantage point over the Lebombo Mountains, while the spacious Suites feature private verandas and private plunge pools. A warm and friendly welcome awaits families with children, with a Family Suite and three Family Cottages available.

## BEYOND PHINDA ROCK LODGE

Suspended over the valley below, this cliff-top pueblo is an intimate and romantic refuge. Eagle's eye views and a feeling of utter seclusion combine with roughly hewn walls and chunky textures. Private plunge pools balance on the edge of a breathtaking precipice, while al fresco showers in the leafy growth give the illusion of bathing in your own waterfall. A roaring fire in the guest areas provides a gathering point for a maximum of just twelve guests.

## BEYOND PHINDA VLEI LODGE

Overlooking an open marsh with its own watering hole, the small and intimate Vlei Lodge is a wildlife playground where the animal encounters are up close and personal. Elegant and serene, the gracious spaces of the lodge are romantic and totally private. Guests can watch the bush come to life from the seclusion of their Suite or take a dip in their pool.



## FAST FACTS

### Mountain Lodge

- 16 Suites, 3 Family Cottages and a Family Suite
- Family friendly, WILDchild
- Fully quipped gym, massage sala and Safari Shop
- Lodge pool and private plunge pools (except Family Suite)
- Outdoor showers

### Rock Lodge

- 6 Suites
- Private plunge pools and outdoor showers
- Romantic rooftop dining
- Not suitable for children due to cliffside location

### Vlei Lodge

- 6 Suites
- Private pools and outdoor showers
- Intimate lodge with magnificent views
- Large spacious Suites

## DISCOVER BEYOND PHINDA PRIVATE GAME RESERVE

### Accommodation Overview

# Our lodges on Phinda

#### BEYOND PHINDA FOREST LODGE

Secluded deep in the rare sand forest, the glass walls of Forest Lodge offer sweeping views of this unique ecosystem. Cradled in a maze of ancient vegetation, each contemporary Zulu-zen Suite provides a tranquil space from which to watch a nyala, a tiny suni or a red duiker graze among the vines. In spite of the floor to ceiling glass, the towering torchwood trees and fertile forest floor create a complete sense of seclusion.

#### BEYOND PHINDA ZUKA LODGE

Booked either for sole-use or on a room-by-room basis, Zuka Lodge offers a relaxed, intimate stay where comfort comes naturally. Guests have everything they need within easy reach: an inviting library, a lodge pool overlooking the bush, and a firepit and boma that invite slow, starlit evenings. Each of the four thatched Suites offers warm interiors and a private sala for quiet, in-between moments. Join others in the spacious guest areas or retreat to your own shaded veranda and let the wild drift by.

#### BEYOND PHINDA HOMESTEAD

A sole-use safari residence, Phinda Homestead is an exclusive hideaway that blends laidback luxury with wildlife adventure. Stylish comfort, coupled with genuine hospitality from Phinda Homestead's personal chef and butler, will have guests feeling at ease in this private villa. An interactive kitchen awaits guests' instructions, whether they're having their favourite meals prepared for them or being surprised at meal time. A dedicated ranger and tracker team will take guests out on game drive whenever they wish.



GLASS SUITE AT FOREST LODGE



FIREPIT AT ZUKA LODGE



SUN DECK & POOL AT HOMESTEAD



## FAST FACTS

#### Forest Lodge

- 15 Suites and a Family Suite
- Large Safari Shop and Ardmore gallery
- Lodge pool, gym, and spa
- Children welcome, but triples not possible

#### Zuka Lodge

- 3 Suites and a Family Suite
- Highly recommended for families on a sole-use basis
- Lodge pool
- Children welcome, but triples not possible

#### Homestead

- Exclusive, sole-use safari villa
- 4 Suites
- Highly recommended for families
- Lodge pool and outdoor showers
- Fully equipped gym and massage sala
- Children welcome, but triples not possible





SBEYOND

DISCOVER PHINDA PRIVATE GAME RESERVE

# Lodge comparison

A quick-reference comparison between the six unique lodges on Phinda, each with their own allure and mesmerising character.



DISCOVER &BEYOND PHINDA PRIVATE GAME RESERVE  
 Lodge Overview

Lodge comparison

	PHINDA MOUNTAIN	PHINDA ROCK	PHINDA FOREST	PHINDA VLEI
OVERVIEW				
Lodge experience	Large lodge, family oriented, modern with beautiful mountain and reserve views	Small, intimate, romantic lodge with beautiful views. No small children permitted	Large lodge, family oriented, canopied in the sand forest, quiet, peaceful	Small, peaceful lodge in the sand forest with a classic luxury feel
Maximum number of guests	50	12	34	12
Number of rooms	23	6	16	6
Family accommodation	1 Family Suite & 3 Family Cottages	None	1 Family Suite, no triples	None
WILDchild programme	Yes	No	Yes	No
Room types	Suites and Cottages	Suites	Suites	Suites
Distance between rooms	Approx. 15 m (50 ft)	Approx. 10 m (33 ft)	Approx. 15 m (50 ft)	Approx. 25 m (82 ft)
FACILITIES				
Power	220v AC	220v AC	220v AC	220v AC
Internet access	Yes, Wi-Fi in rooms and guest areas	Yes, Wi-Fi in rooms and guest areas	Yes, Wi-Fi in rooms and guest areas	Yes, Wi-Fi in rooms and guest areas
Wine store or cellar	Yes	No	Yes	No
Boma	Yes	No	Yes	No
Interactive kitchen	Yes, including a pizza oven	No	Yes	No
Swimming pool	Yes	No	Yes	No
Wellness offering	Healing Earth treatments offered in-room or in the massage sala	Healing Earth treatments offered in-room	Healing Earth wellness treatments in the Wellness Spa	Healing Earth treatments offered in-room
Fitness centre	Well equipped gym	Gym-in-a-Basket available	Well equipped gym	Gym-in-a-Basket available
Conference facilities	Yes, suitable for 8 – 12 people	No	No	No
Weddings and blessings	Yes	Yes	Yes	Yes
Wheelchair accessibility	Yes, with assistance	No	No	No
Complimentary laundry service	Yes	Yes	Yes	Yes
&Beyond Signature Safari Shop	Yes	No	Yes	No



# Lodge comparison

	PHINDA ZUKA	PHINDA HOMESTEAD
OVERVIEW		
Lodge experience	A sole-use lodge that can also be booked individually, offering an intimate atmosphere with the quiet charm of a classic safari camp	Luxurious private villa, contemporary farmhouse feel, fully equipped, private service, private guiding
Max. number of guests	10	8
Number of rooms	4	4 (1 optional child's room)
Family accommodation	1 Family Suite	Yes, in Suites or child's room
WILDchild programme	Yes	Yes
Room types	Suites	Suites
Distance between rooms	Approx. 15 m (50 ft)	2 rooms are seperated from the other 2 rooms by approx. 40 m (120 ft)
FACILITIES		
Power	220v AC	220v AC
Internet access	Yes, Wi-Fi in all rooms and guest areas	Yes, Wi-Fi in all rooms and guest areas
Wine store or cellar	No	No
Boma	Yes	Yes
Interactive kitchen	Yes	Yes
Swimming pool	Yes	Yes
Wellness offering	Healing Earth treatments offered in-room	Healing Earth treatments offered in-room or in the massage sala
Fitness centre	Gym-in-a-Basket available	Well equipped gym
Conference facilities	No	No
Weddings and blessings	Yes	Yes
Wheelchair accessibility	Yes, with assistance	Yes, with assistance
Complimentary laundry service	Yes	Yes
&Beyond Signature Safari Shop	Yes	No

## DISCOVER &BEYOND PHINDA PRIVATE GAME RESERVE

Lodge Overview

# Accommodation comparison

	PHINDA MOUNTAIN	PHINDA ROCK	PHINDA FOREST	PHINDA VLEI
Room size	65 – 250 m <sup>2</sup> (699 – 2 690 ft <sup>2</sup> )	75 m <sup>2</sup> (775 ft <sup>2</sup> )	95 m <sup>2</sup> (1 022 ft <sup>2</sup> )	173 m <sup>2</sup> (1 862 ft <sup>2</sup> )
Room configuration	16 Suites (max. 2 – 3 guests) 6 Cottages (max. 2 – 3 guests) 3 Family Cottages (max. 4 guests) 1 Family Suite (max. 8 guests)	6 Suites (max. 2 guests)	15 Suites (max. 2 guests) 1 Family Suite (max. 4 guests)	6 Suites (max. 2 guests)
Private veranda / sala	Yes	Yes	Yes	Yes
Private pool	Yes	Yes	No	Yes
Personal bar	Yes	Yes	Yes	Yes
Personal coffee station	Yes	Yes	Yes	Yes
Air conditioning / heating	Yes	Yes	Yes	Yes
Overhead fans	Yes	Yes	Yes	Yes
Mosquito nets	No	No	No	No
Bath	Yes	Yes	Yes	Yes
Shower	Indoor and outdoor shower	Indoor and outdoor shower	Indoor shower only	Indoor and outdoor shower
Seperate WC	Yes	Yes	Yes	Yes
Telephone	Yes	Yes	Yes	Yes
Hairdryer	Yes	Yes	Yes	Yes
Internet access	Yes	Yes	Yes	Yes
In-room safe	Yes	Yes	Yes	Yes
Plug type	220V AC Plug Type C, D, M, N Adapters available	220V AC Plug Type C, D, M, N Adapters available	220V AC Plug Type C, D, M, N Adapters available	220V AC Plug Type C, D, M, N Adapters available
Triple bed option	Yes	No	No	No
Twin bed option	Yes	Yes	Yes	Yes
Double bed option	Yes	Yes	Yes	Yes
Interleading door	In Family Cottages and Family Suite	No	In Family Suite	No
Wheelchair accessibility	Wheelchair friendly with assistance	Not suitable for those with mobility issues	Not suitable for those with mobility issues	Not suitable for those with mobility issues



DISCOVER &BEYOND PHINDA PRIVATE GAME RESERVE  
 Lodge Overview

Accommodation comparison

	PHINDA ZUKA	PHINDA HOMESTEAD
Room size (square meters)	80 – 147 m <sup>2</sup> (861 – 1 582 ft <sup>2</sup> )	55 m <sup>2</sup> (592 ft <sup>2</sup> )
Room configuration	3 Suites (max. 2 guests) 1 Family Suite (max. 4 guests)	4 Suites (max. 2 guests) 1 optional child's room (sleeps 2 children)
Private veranda	Yes	Yes
Private pool	No	Shared villa pool
Personal bar	No	No
Personal coffee station	Yes	No
Air conditioning / heating	Yes	Yes
Overhead fans	Yes	Yes
Mosquito nets	Yes	No
Bath	Yes	Yes
Shower	Indoor shower only	Indoor and outdoor shower
Seperate WC	Yes	Yes
Telephone	Yes	Yes
Hairdryer	Yes	Yes
Internet access	Yes	Yes
In-room safe	Yes	Yes
Plug type	220V AC Plug Type C, D, M, N Adapters available	220V AC Plug Type C, D, M, N Adapters available
Triple bed option	No	No
Twin bed option	Yes	Yes
Double bed option	Yes	Yes
Interleading door	No	No
Wheelchair accessibility	Wheelchair friendly with assistance	Wheelchair friendly with assistance



DISCOVER PHINDA PRIVATE GAME RESERVE

# Our impact legacy

From our greater conservation model down to the tiniest details, every decision that we make revolves around our core ethic of Care of Land, Wildlife, and People.





## DISCOVER &BEYOND PHINDA PRIVATE GAME RESERVE

Impact Initiatives

# Our land & wildlife

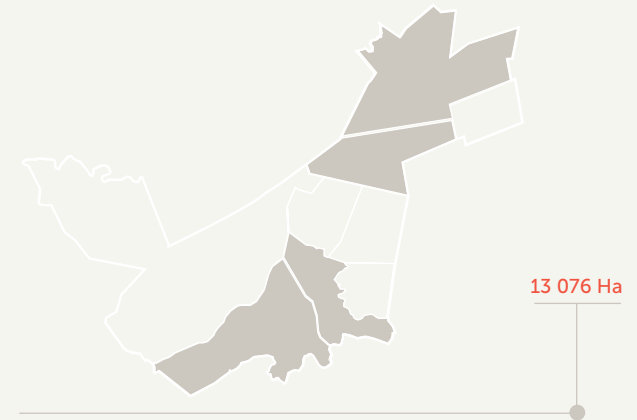
&Beyond was launched with the creation of Phinda Private Game Reserve in 1991. It was the first private game reserve in the province of KwaZulu-Natal, South Africa.

The original 13 076 hectares (32 311 acres) selected was identified as key conservation land. Wildlife had originally occurred here, but for almost a century this area had been dominated by pineapple, cattle, sisal and game farms, and was severely overgrazed and degraded. The founding vision was to rehabilitate this depleted tract of land, and reintroduce all the large mammal species that had originally lived in this region.

Care of Land, Wildlife, and People: the business model supporting this ambitious project was based on the principle that by harnessing international capital through low-impact, high-yield tourism, conservation can provide economic viability while also generating meaningful benefits for neighbouring rural communities.

Today, &Beyond Phinda is not only a flagship property boasting six globally recognised and award-winning luxury safari lodges, but it is also a proven impact case study that is widely regarded as one of the world's most far-sighted and successful blueprints for international ecotourism.

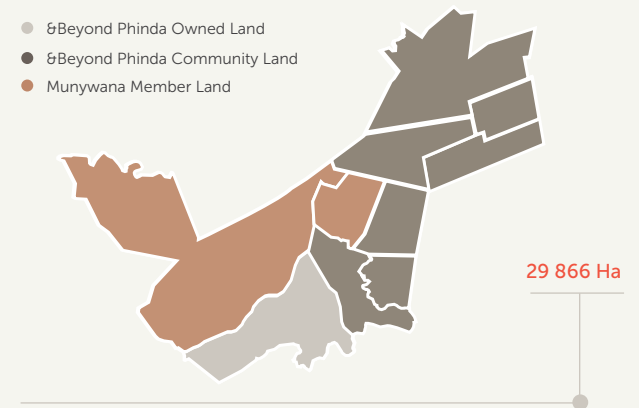
**Phinda – meaning ‘the return’ in Zulu – has become the most compelling realisation of the &Beyond dream to create sustainable conservation through responsible tourism.** ”



PHINDA PROPERTIES 1991

### EXPANDED BIODIVERSITY

Through our relationships with the local communities and our close affiliation with the Munywana Conservancy (a collaboration of wildlife land owners in the surrounding KwaZulu-Natal region), &Beyond Phinda has grown from the original 13 076 hectares (32 311 acres) to 29 866 hectares (73 800 acres) of protected wilderness.



MUNYWANA PROPERTIES 2019

# Pioneers in conservation

As wildlife was reintroduced to Phinda, it became the testing ground for many of the concepts, ideas and future working models of the company, including a number of conservation firsts.



## LION

In 1992 and 1993, pioneering reintroduction methods were successfully used to mix Phinda's first 13 lion sourced from different prides. Now one of South Africa's most genetically diverse lion populations, they have supported the establishment of other reserve populations in Africa and even reversed a 15-year local extinction in Rwanda.

---



## CHEETAH

The reintroduction of Namibian cheetah – 12 in two groups - was carefully planned to give them time to settle before lion were introduced - the first successful reintroduction of these two species into the same area. As one of Southern Africa's most important populations, they are in high demand to restock or develop new populations.

---



## ELEPHANT

Phinda was the first private reserve to reintroduce elephant in 1991. The initial two intakes of elephant were 37 orphaned youngsters, with the first four adults arriving from Zimbabwe in 1993. 1994 marked the arrival of a group of 14 from Kruger National Park including a full breeding herd, and the birth of the first calf on Phinda.

---



## RHINO

21 white rhino – an estimated 35 tons - were relocated in one day from a neighbouring farm in the largest translocation of its time. In 2004, Phinda was selected to start the WWF/ Ezemvelo KZN Wildlife Black Rhino Range Expansion Project and received 15 black rhino. The project's first calf was conceived and born on Phinda a year later.

---



## DISCOVER 6BEYOND PHINDA PRIVATE GAME RESERVE

### Impact Initiatives

---

# Our communities

Alongside the restoration of the land and reintroduction of the wildlife, the Phinda story is also about care of people – the generation of meaningful community benefits through our conservation endeavours.

In those early days, our engagement with the communities was an extended, trust-building process, as their association with conservation authorities in this politically turbulent period had been largely negative. We were also fortunate to have a staff member, Walter Zulu, who was of royal lineage, to guide us through the complexities of the traditional meeting protocols.

Our undertaking was to create job opportunities, provide skills training and support community-led development projects through the establishment of the Rural Investment Fund (1992) – now Wild Impact\*, our long-standing community and conservation development partner.

Perhaps this part of the Phinda story is best explained by community member, Gladys Zikhali: "The rural communities bordering Phinda were ordinary people. When Phinda started, for the most part, they did not think that changing a pineapple farm and cattle ranch into a game reserve was a good idea. They believed that there was every chance that the dangerous animals would destroy their farm stock, and perhaps even worse. They never thought that one day they could have better jobs and the opportunity for tertiary education."

#### LAND-RETURN TO COMMUNITY

##### How far have things come since those early trust-building days?

In 2007 a pioneering land claim settlement took place between Phinda and the communities of Makhasa and Mnqubokazi: 9 085 hectares (22 460 acres) of wilderness land was returned to its ancestral owners. Both communities made the decision to continue with the use of the land for wildlife and conservation rather than farming. Isaac Tembe from Wild Impact\* describes this chapter in the Phinda story as "standing at the gate of a new dawn".

\*Formerly Africa Foundation



DISCOVER BEYOND PHINDA PRIVATE GAME RESERVE  
Impact Initiatives

---

# Foundational community-led projects

We believe that, in order for wildlife to thrive, local populations need to experience the benefits of participation in conservation.



## MNQOBOKAZI PRIMARY SCHOOL

Situated in the Mnqobokazi Community, Wild Impact\* first assisted the school in 1993 / 1994 with two classrooms. Since then another two classrooms, electricity connection and a vegetable garden with water access and fencing has been provided.

---



## MDUKU CLINIC

Situated in the Mduku Community, the early structure was funded by Wild Impact\* in 1995 together with subsequent expansions. The clinic has gone from strength to strength. Today it is a 24-hour primary health care centre, serving over 5 000 community members a year.

---



## MACEBO CRÈCHE

Located within the Mduku Tribal Authority area, the crèche was established in 1999 in collaboration with the Non-Profit Company, Operation Jumpstart. Wild Impact\* has funded the build of two classrooms, including ceilings, electrification, tiling and furniture.

---





andBEYOND



@andbeyondtravel  
#seewhatliesbeyond

andBeyond.com