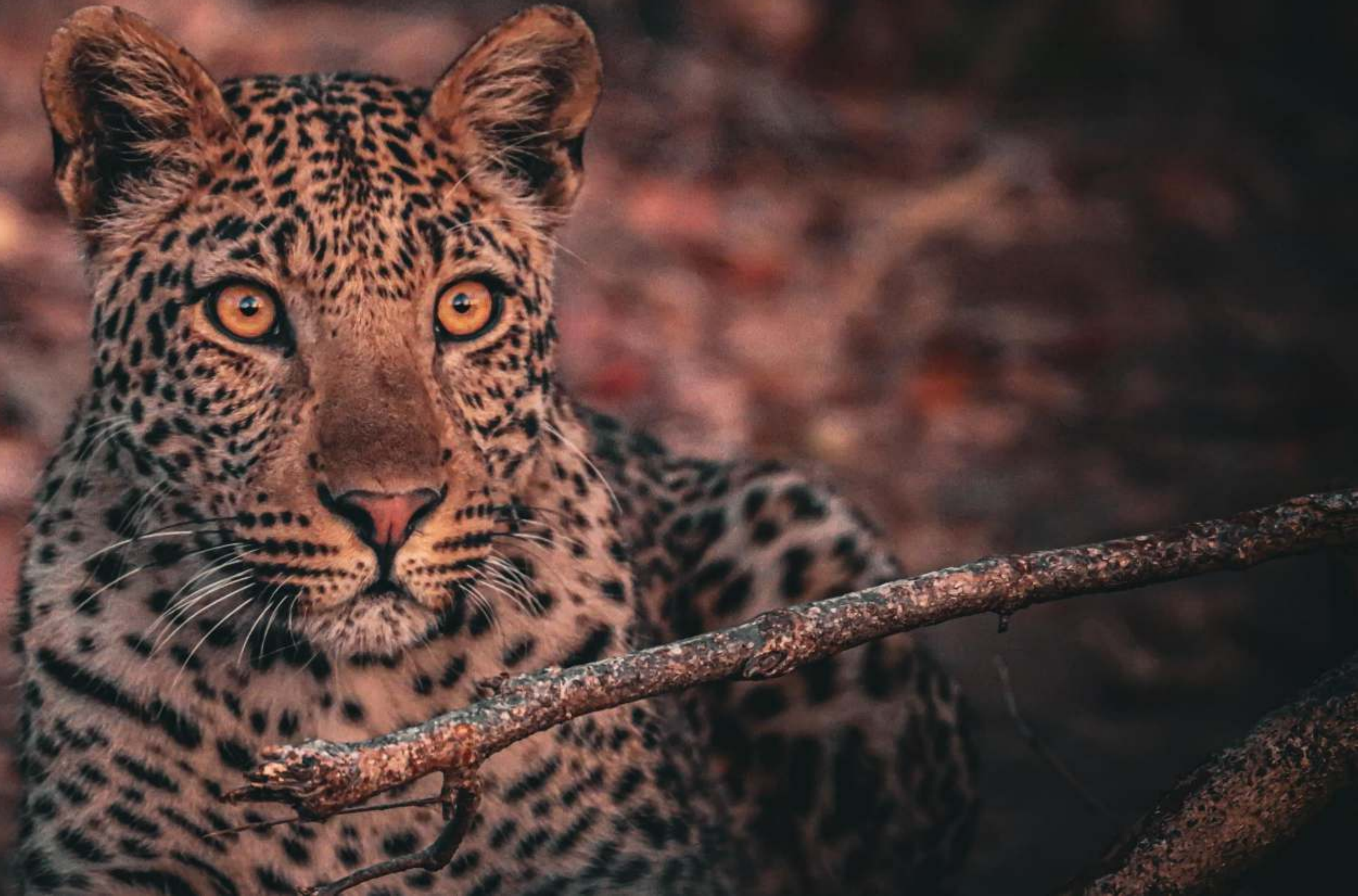




NOGATSAA PANS
CHOBE



Chobe National Park
Botswana
Ghoha Hills
Savuti area.

150km SW of Kasane

230km NE of Maun

Road: BBK 3 - 4 hrs

Helicopter: BBK 48 mins

Light Aircraft:

BBK 35 mins

MUB 50 mins

Nogatsaa Pans
Nogatsaa area

80 km SE of Kasane

Road: BBK 2 - 3 hrs

Helicopter: BBK 24 mins

Light Aircraft

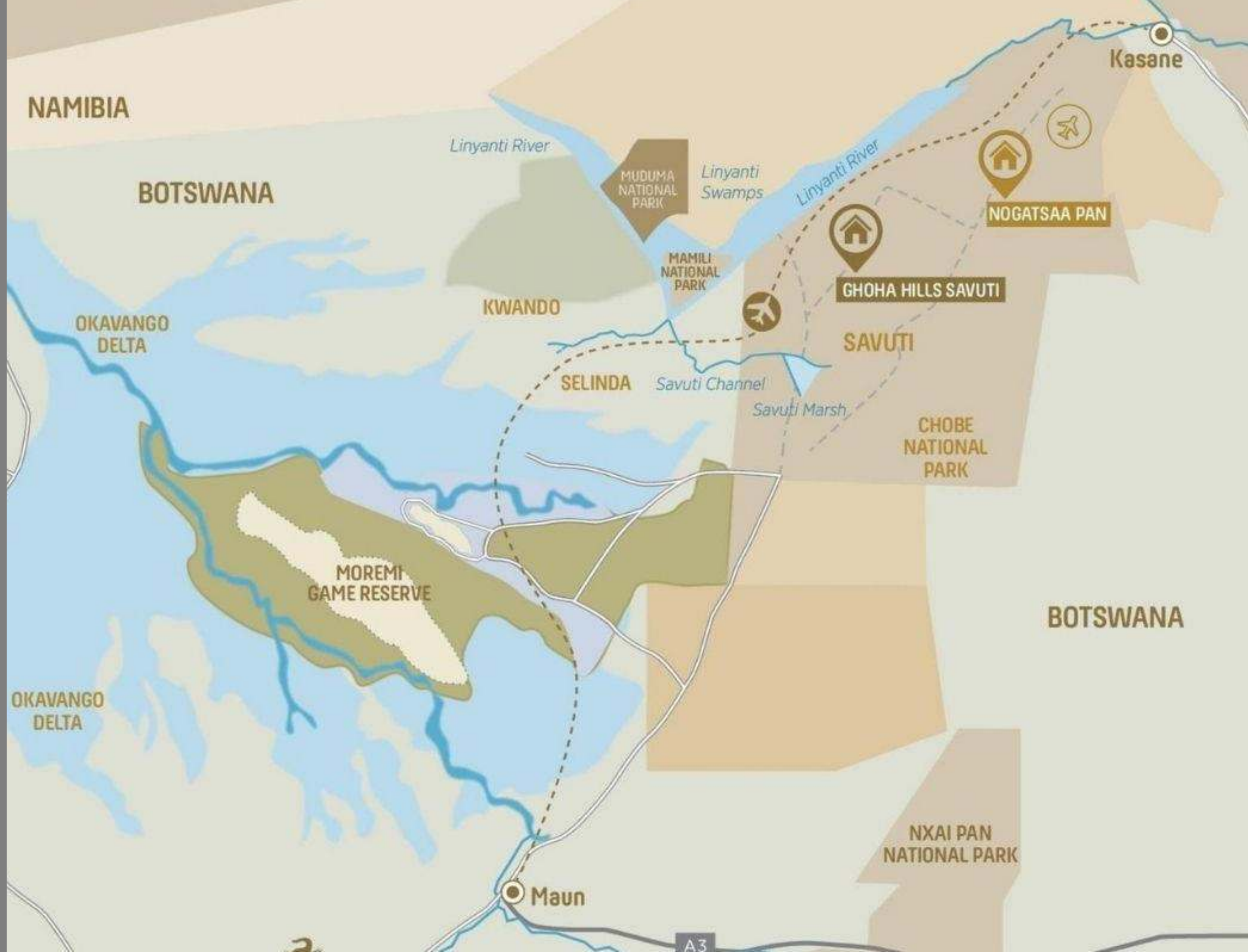
BBK 25 mins

Transfer between Lodges

Road: 4 inclusive of stops

Helicopter: 30 mins

Light Aircraft: 30 mins



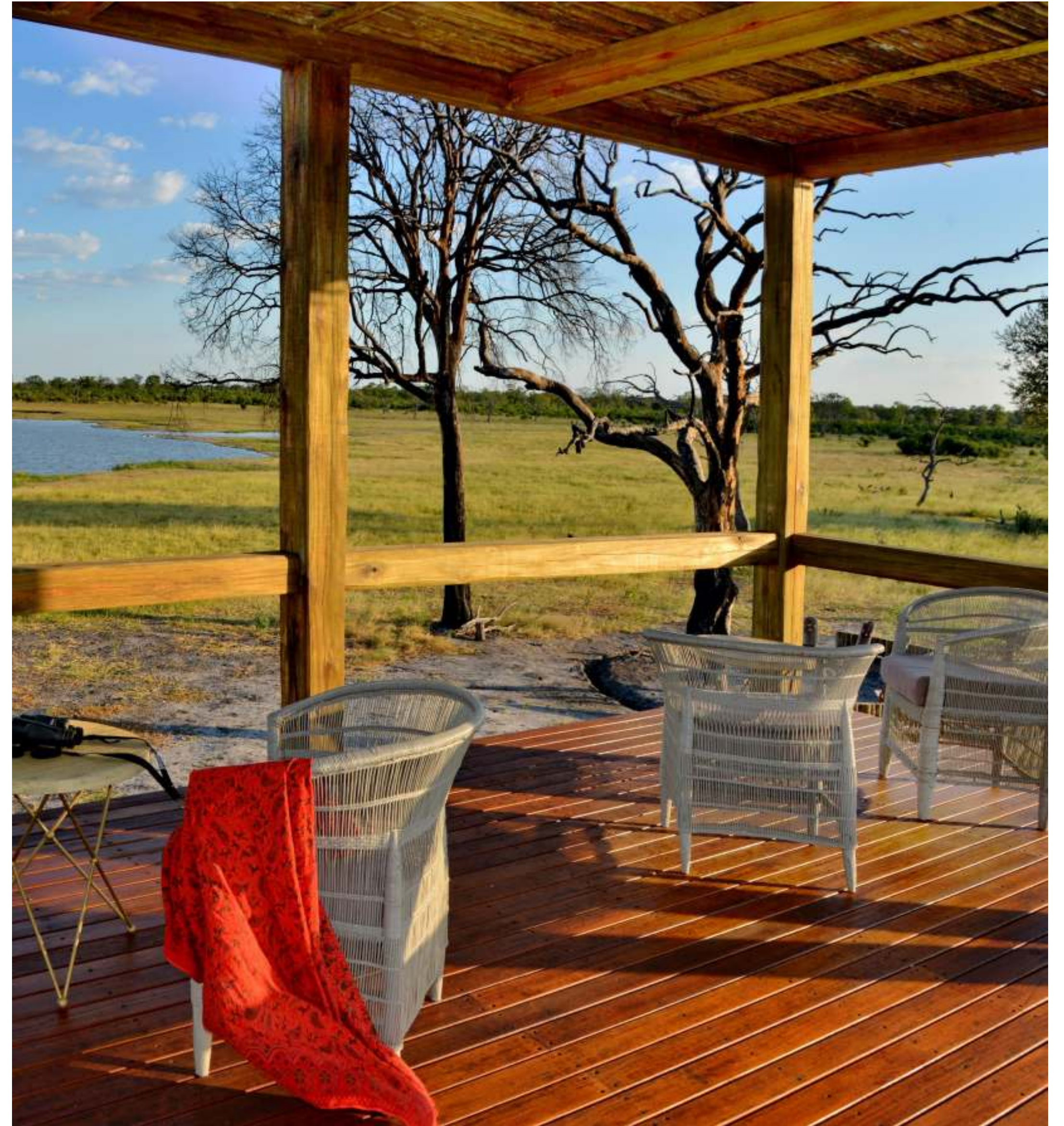


Open dining space, a bar, and various seating areas and a raised viewing deck



Poolside deck positioned for maximum views over Kwikamba Pan









Dinner @ Nogatsaa Pans



Breakfast @ Nogatsaa Pans



2 x Family Tents





Action packed Kwikamba Pans





Activities

Morning & Afternoon game drives in open 4x4 safari vehicle on private roads and waterholes

Armchair safari from all decks



Sundowner drives

Birdwatching

Stargazing

Spa Treatments (In Room)

Private Dinners

Elephants Galore





Eco tourism

Botswana certified



- Both Lodges are Eco certified - the highest level in eco certification given by the Botswana Tourism department.
- Giving our guests personalized experience with the lightest footprint



Our Power Solutions

- **Ghoha Hills & Nogatsaa Pans** each have extensive Solar farms feeding the Freedom Won 100Kwh Battery Solution system to provide the Lodges with all their energy requirements.
- All boreholes have been converted to operating on solar – thereby reducing our carbon footprint.





Our Waste Solutions

- State of the art Calcamite Bio Mite waste disposal system gives both properties reliable, sustainable and dignified sanitation solutions.

Our Tents

- All our rooms are fitted with Solar geysers to supply Hot-water for showers.
- We use a definitive range of guest amenities that is natural, environmentally friendly and cruelty-free – Beautiful Earth



- **Our re-cycling**

- All our bottles, tins, papers, food get sorted on the property in different bins and taken to Kasane on a regular basis. Left over foods get delivered to livestock farmers in the local communities.

- **Fresh Produce**

- Where possible our kitchens are supplied fresh produce from our local farmers in the nearby communities.

