

LOCATION & ACCESS

TAASA Lodge is centrally located between 3 of the largest safari ecosystems in the world—Ngorongoro Conservation Area, Maasai Mara National Reserve, and Serengeti National Park.

In a remote corner bordering the game-rich Serengeti National Park, TAASA Lodge sits within a protected wildlife area, offering guests an exclusive Tanzania safari.

GETTING TO TAASA LODGE

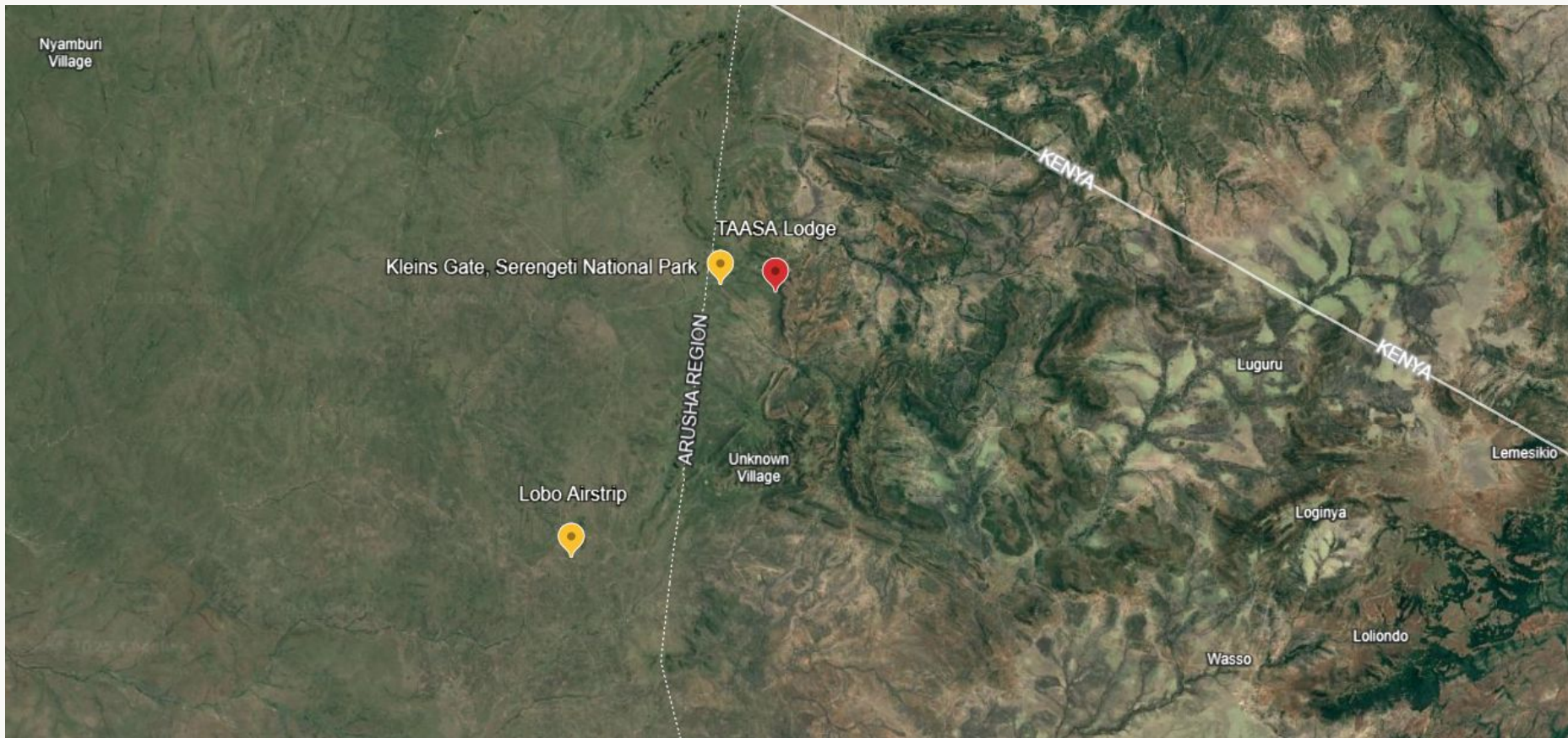
BY AIR

- The closest Airstrip to TAASA Lodge is called Lobo Airstrip. Approx (45 min drive from the airstrip to the lodge)
- Lobo Airstrip is accessed by light aircraft via daily scheduled flights from Arusha and Dar Es Salaam.
- Arrival welcome and complimentary return transfers from Lobo Airstrip to TAASA Lodge

BY ROAD

- TAASA is accessible by road: 10hr drive from Arusha and roughly 3h30m drive from Central Serengeti (Seronera).





Site Location: TAASA Lodge, Northern Tanzania
Dates: 1 January - 31 December

Flight Access: Lobo Airstrip - approximately 1.30 hr drive to lodge
Site Coordinates: 1.8603° S, 35.2763° E