

## GONDWANA FAMILY LODGE

### IDEAL FAMILY GETAWAY

This spacious thatched lodge blends modern comfort with authentic bush character. Interconnecting rooms suit families and groups, while generous shared spaces invite relaxation and connection.

Indoor and outdoor areas offer space to unwind, and a child-friendly pool welcomes guests of all ages. A curated programme of educational and recreational wildlife experiences ensures a rewarding stay for couples, families, and groups alike.

#### LODGE FACILITIES

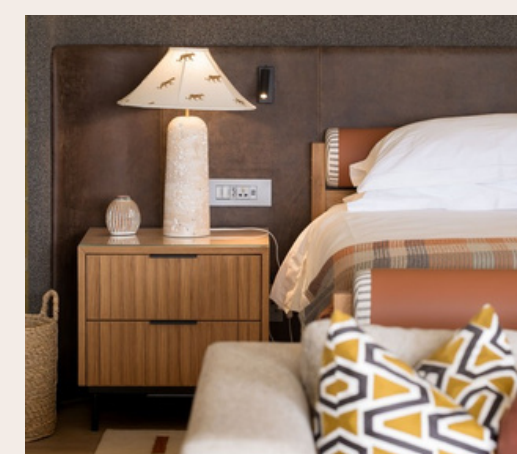
- Relaxation Retreat with signature Hamam
- Eco-Explorers Club with television
- Outdoor play area for children
- Exercise Room
- Lounge with a fireplace and a television with satellite channels
- Gift boutique
- Complimentary Wi-Fi
- Open-air dining boma
- Outdoor pool with shallow area

#### SUITE FEATURES

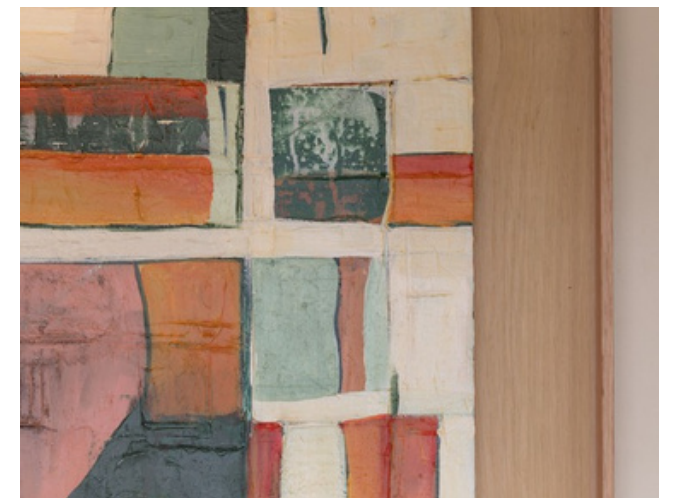
- En-suite bathroom, shower, twin basins and free standing bath
- Private minibar
- Tea and coffee making facilities
- Electronic safe
- International dial telephone
- Air-conditioning
- Under floor heating
- Private deck or balcony

#### SUITE CONFIGURATION

- Suites can accommodate a maximum of 2 adults sharing, in a king or twin bed configuration
- 6 suites are located on the ground floor with private deck
- 6 suites are located on the second level with private balcony
- All rooms have sleeper couches which can sleep one child under the age of 12 years
- Four pairs of rooms are interleading







## AT A GLANCE

### THE WESTERN CAPE'S PREMIER WILDLIFE DESTINATION

Seated at the foot of the Warmwaterberg Mountain Range in the heart of South Africa's Little Karoo, Sanbona pays tribute to the San people who made this arid environment their home for centuries. Sanbona has an alluring atmosphere of stillness, an air of isolation amid the raw beauty and boundless plains. Sanbona and the spirit of the San people welcomes you.

#### CELEBRATE THE ROMANCE & ELEGANCE OF A BYGONE ERA

- One of South Africa's largest privately owned wildlife reserves
- The first authentic "Big 5" wildlife reserve in the Western Cape
- Free-roaming self-sustaining wildlife
- Home to the critically endangered and highly elusive Riverine Rabbit
- Home to the Dwarf Blue butterfly, the second smallest butterfly in the world
- Over 200 identified bird species
- Important raptor nesting sites, including the Verreaux's (Black) Eagle
- The Bellair Lake provides a wetland habitat for a myriad of water birds. Cruises can be enjoyed with a qualified guide and skipper
- Approximately 650 plant species
- Conserves vegetation types of the Fynbos and Succulent Karoo biomes which are proclaimed Global Biodiversity Hotspots, characterised by exceptionally high species diversity and endemism
- The Fynbos Biome is a part of the Cape Floristic Kingdom, a World Heritage Site
- Rock art sites dating back to more than 1 500 years
- Stargazing is rated amongst the best in Southern Africa



#### GUEST ACTIVITIES

##### Nature Drives

Interactive nature drives, lasting up to three hours, take place during the tranquil hours of sunrise and sunset. Guests are guided by an experienced Guide in an open game-viewing vehicle and are encouraged to share any particular interests, which the ranger will endeavour to incorporate into the drive.

Nature drives include a sundowner at sunset and tea or coffee at sunrise. For safety reasons, children under the age of four are not permitted to participate in game drives

##### Guided Nature Walks

Qualified walking guides provide the opportunity for guests to experience the excitement of tracking, bird, insect, plant and animal dropping identification. No persons under the age of 14 years are permitted to join the nature walks. Kindly ensure to request this activity at the time of booking accommodation as nature walks are subject to the availability of qualified guides.

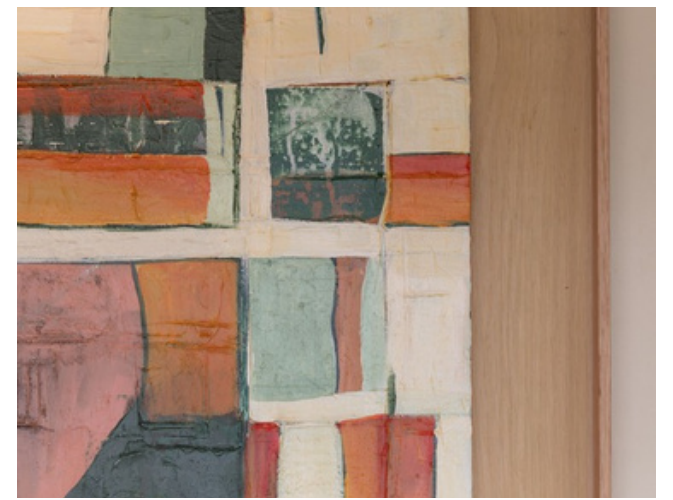
##### Relaxation Retreat

The newly designed Relaxation Retreat at Gondwana Family Lodge has been thoughtfully curated to deliver a deeply immersive experience of relaxation and tranquility. Two beautifully appointed therapy rooms accommodate both single and couples' treatments, while a spacious relaxation area invites guests to fully unwind and restore.

##### Stargazing & Story Telling

With the absence of artificial light, the stargazing at Sanbona Wildlife Reserve is phenomenal and amongst the best in Southern Africa. Interpretations about the constellations of the Southern Hemisphere are given by knowledgeable guides. Romantic stories of gods and goddesses banished to the heavens are woven into astronomical facts and unfolds before your eyes. Discover the ancient myths of the stories told by the San about their visions of the stars.





## PROGRAM OF EVENTS

The following times are only an indication and approximate as these may vary according to seasons and weather conditions.

Lodges operate independently, each with a full staff compliment including its own management team, chef brigade, hosts and hostesses and experienced field guides. Dinner alternates between the in and outdoor facilities, weather permitting.

We do suggest that guests arrive in time for lunch on their day of arrival as not to miss out on any game drives during their stay. Daily transfers from the welcome lounge are available on request, and must be booked at least 72 hours in advance.

Please note the traveling time on the dirt road, from the main gate, to Tilney Manor is approximately 45 minutes, 65 minutes to Dwyka Lodge and 55 minutes to Gondwana Lodge. The main gate closes at 18h00. Arrangements should be made prior to arrival should your arrival time be later.

### ARRIVING GUESTS

Pick-up from welcome lounge at 12h30

- arrive at Tilney 13h15
- arrive at Gondwana 13h25
- arrive at Dwyka 13h35

Pick-up from welcome lounge at 16h00 (these guests will not be able to join the afternoon game drive)

- arrive at Tilney 16h45
- arrive at at Gondwana 16h55
- arrive at Dwyka 17h05

### DEPARTING GUESTS

Pick-up from Dwyka Lodge at 11h00

Pick-up from Gondwana Lodge at 11h20

Pick-up from Tilney Manor at 11h35

- arrive at the welcome lounge 12h15

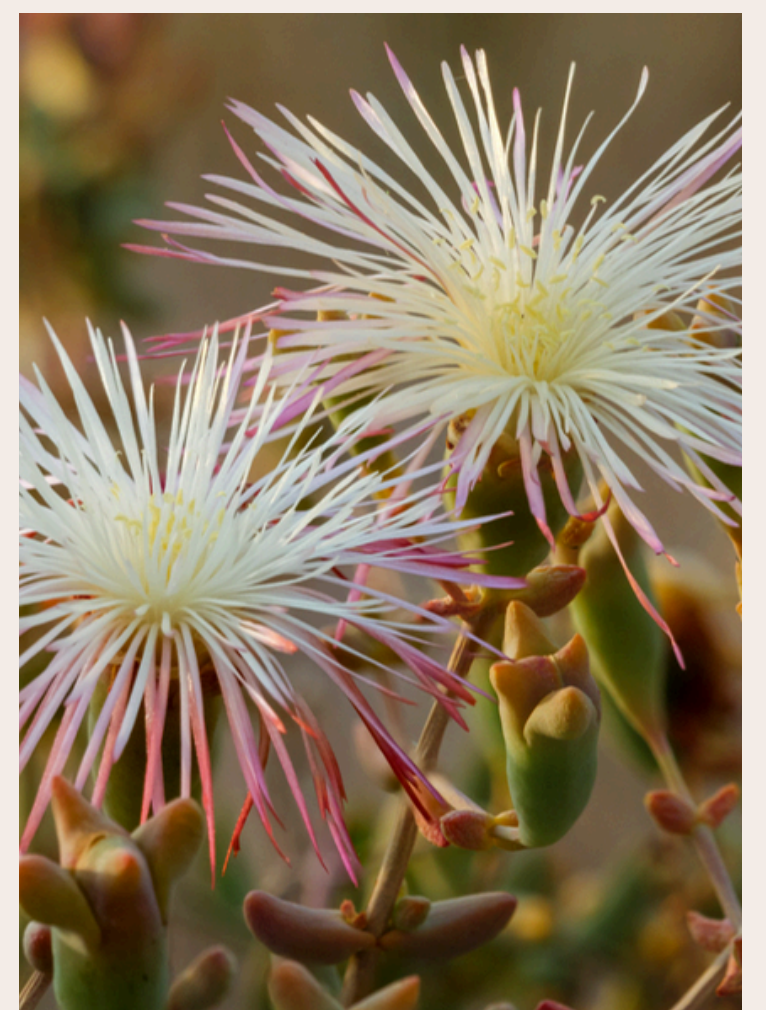
PLEASE NOTE: All times are estimated and subject to road conditions and vehicle types

### APRIL - SEPTEMBER (WINTER)

- 06h30 Wake up call
- 07h00 Breakfast is served
- 07h30 Depart for morning nature drive
- 11h00 Depart lodge
- 13h00 Lunch is served
- 15h00 Depart for afternoon nature drive
- 19h30 Dinner is served

### OCTOBER - MARCH (SUMMER)

- 05h00 Wake up call
- 05h30 Depart for morning nature drive
- 09h00 Breakfast is served
- 11h00 Depart lodge
- 13h00 Lunch is served
- 16h00 Depart for afternoon nature drive
- 21h00 Dinner is served







## ECO-EXPLORERS PROGRAMME

### FOR OUR YOUNG ADVENTURERS

While parents embark on Nature Drives or unwind at our Relaxation Retreats, children can engage in hands-on, educational activities designed to foster a lifelong appreciation for wildlife and the environment.

At Sanbona, we promote nature conservation across everything we do, Which is why we take great pride in offering children experiences that will inspire future conservationists.

### OUTDOOR ACTIVITIES

While kids under 4 years old are not permitted on game drives, there are a host of exciting adventures that await your little ones and mom and dad too, such as:

- Interpretive Trail This takes your kids through the garden of Gondwana, to learn about animals on the reserve as well as their tracks, important plants, and more.
- Sanbona Activity Book An educational, fun and interactive book, teaching children about the wildlife at Sanbona.
- Treasure hunts, short bush walks and night walks, stargazing and insect observing- all within a fenced area.



### INDOOR ACTIVITIES:

Regardless of the weather, our Eco-Explorers Club is designed to offer engaging and enriching experiences:

- Arts and crafts
- Puzzles of varying sizes and difficulties covering a broad age range
- Documentary DVD's on various conservation topics and animals as well as animated movies
- Entertaining and educational children's books
- A selection of fun board games

