



# CHIEF'S CAMP

AN A&K SANCTUARY

*Okavango Delta, Botswana*



*Chief's Camp occupies a prime location on scenic Chief's Island*

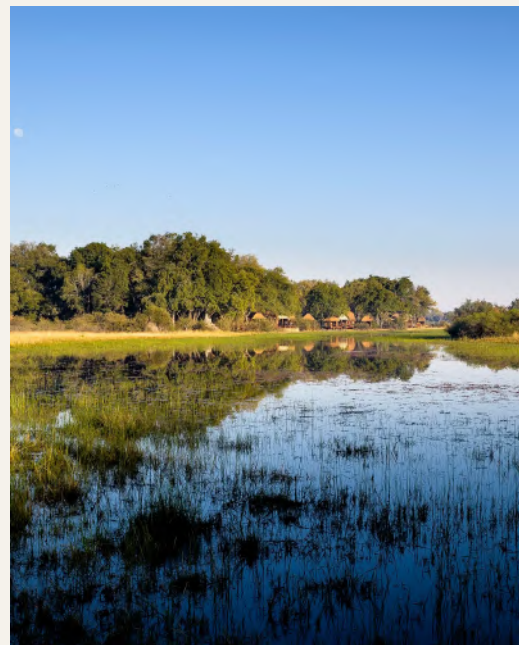
# A stilted sanctuary amid the widescreen wonder of the Okavango Delta

In an exceptional location on Chief's Island, overlooking the verdant floodplains of the Okavango Delta, this contemporary-style safari camp has incredible wildlife spotting year-round. Chief's Island was once a royal hunting ground and has since become famous for its high number of predators. The use of wood and local craft gives an authentic yet luxurious feel to the camp, which is made up of 10 spacious private thatched Bush Pavilions and the indulgent two-bedroom Geoffrey Kent Suite, with panoramic views from each one. Twice-daily game drives plug guests into one of the richest concentrations of animals in Botswana, with the chance of spotting elephant, hippo, lion, leopard and more, while excursions in traditional mokoros glide serenely across the greatest inland river delta on earth.

# Six Reasons to Choose Chief's Camp



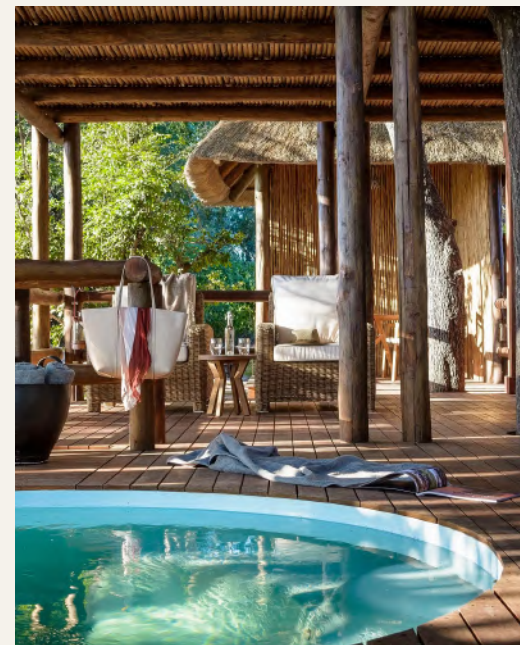
01



*The camp overlooks the flora-rich floodplains*

Few camps in the Okavango Delta can match this spectacular setting on Chief's Island.

02



*A private plunge pool offers for cooling dips*

To stay here is to enjoy the largest suites in the area, each with a wraparound terrace and private plunge pool.

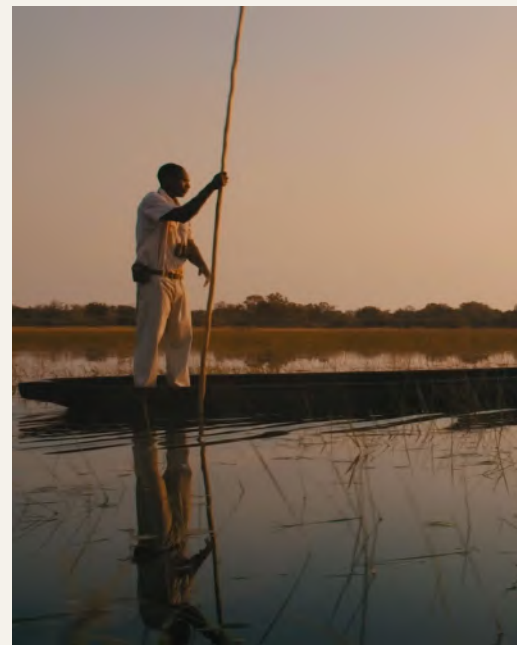
03



*Curious animals are a common sight here*

Game viewing continues from dusk till dawn thanks to the camp's location by a watering hole.

04



*Punt-like mokoros (canoes) offer serene sightseeing*

Experience the traditional way of life on seasonal excursions in mokoros (dugout canoes).

05



*Expert guides are on hand to share their knowledge*

Budding David Attenboroughs will be inspired at the camp's dedicated children's retreat.

06



*Unwind with an all-natural spa treatment*

Relaxing organic treatments await in the spa after a day of thrilling game drives.

# The Camp



Continuing the philosophy of the Batawana people, who first turned this island into a reserve where animals are protected, Chief's Camp treads lightly on its natural surroundings. Wood-crafted guest suites – 10 large pavilions and the two-bedroom Geoffrey Kent Suite – are hidden away in the native sausage trees, while beaded chandeliers and wall hangings root the decor in local craft. Soaring ceilings, private plunge pools and wraparound terraces imbue the stilted, thatched-roof camp with a contemporary-meets-traditional feel. Modern features include a kitted out gym and a spa, where an expert therapist carries out treatments using all-natural Healing Earth products.

The spectacular setting on the edge of a watering hole gives round-the-clock immersion in the sights and sounds of the wildlife-rich Okavango plains. Connection to nature is all but guaranteed here – whether that's spotting the occasional thirsty elephant while doing laps in the pool, hearing a chorus of birdsong while sipping sundowners in the open-sided bar or seeing eyes flash in the darkness while relaxing around the firepit.

*Breakfast with early-morning delta views*



*"Pull up a chair for front-row viewing of nature at its most pulsing and abundant"*



*There are ample seating areas by the bar*

# The Camp



## BUSH BOUTIQUE

The curated selection of locally crafted items in the on-site Bush Boutique means guests can take home more than just memories from this incredible place, plus purchases help to support the artisan community.

## BAR

The highlight of any safari is surely swapping tales of the day's sightings over sundowners. At Chief's Camp, these are served in the high-ceilinged main bar, which was fashioned from dark saligna wood, and enjoyed in deeply comfortable seats around the main boma.

## CHILDREN'S RETREAT

Chief's Camp has a dedicated retreat for families travelling with children. Here a games room and interactive nature lessons will keep younger guests entertained and engaged – with lots of stories to take home to their school friends.

## SPA AND WELLNESS

The intimate spa is a place for indulging in all-natural, organic Healing Earth treatments – the marula and African potato wrap is particularly pampering – while the fitness centre has treadmills, exercise bikes, weights and a rowing machine.

## SWIMMING POOL

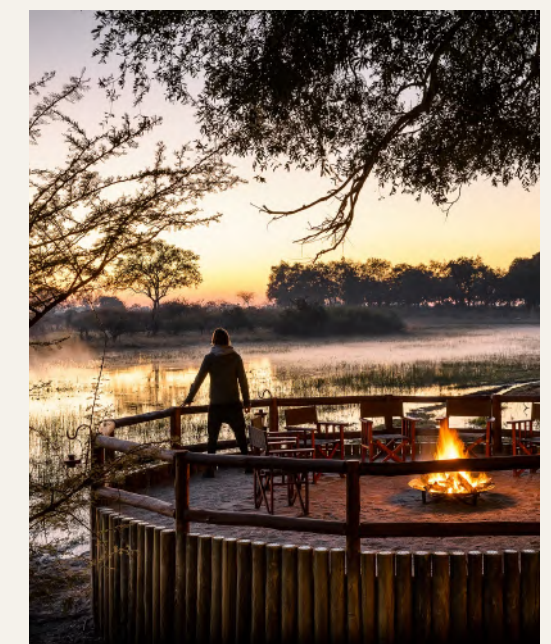
Each pavilion has its own plunge pool for refreshing, secluded dips after a morning out in the bush. For a swim and more front-row views of the natural spectacle all around, the swimming pool has a large deck and loungers.

## MAP ROOM AND SPOTTER'S KIT

When you're surrounded by nature, any rustle of a leaf could mean an animal sighting, so the Leica binoculars supplied to guests will come in handy, as will the interactive maps, in the orientation room. There are two spotting scopes located on the decks of the main area for prime wildlife viewing from camp.



CLOCKWISE FROM LEFT  
Zebra herds are a dazzling sight  
The camp's pool deck has shaded loungers  
As night falls the firepit beckons



# The Camp



*Sundowners round off the day*

*Contemporary safari-chic interiors*

GPS Coordinates	GPS 19° 17' 35.03" S, 22° 54' 31.75" E
Open year round	Yes
Number of rooms	10 Bush Pavilions and 1 Geoffrey Kent Suite
Maximum number of guests	24
Child Policy	Children aged 6 years and above are welcome. Children under 15 must share with an adult
Guide/Pilot Accommodation	Yes; 1
Wheelchair Accessible	No
Power Supply	Solar power with backup generator and inverter systems
WiFi Available	Yes, in all areas
Binoculars Provided	Yes; Leica binoculars provided for every guest
Camp Fenced	No
Credit cards accepted	Visa, MasterCard
Currencies accepted	USD, Pound, Euro and South African Rands
Swimming Pool	Yes
Spa/Treatment Room	Yes

# The Rooms



Each of the 10 sizeable, stilted Bush Pavilions continues the feeling of total immersion in nature for which Chief's Camp is renowned, with floor-to-ceiling windows and wraparound private decks for panoramic delta views. Neatly thatched roofs ensure they feel airy, while safari-chic materials such as leather and linen add a contemporary feel. The two-bedroom Geoffrey Kent Suite has its own boma and dedicated staff – bush-camp stays don't get more spoiling.

*The private boma at the Geoffrey Kent Suite*

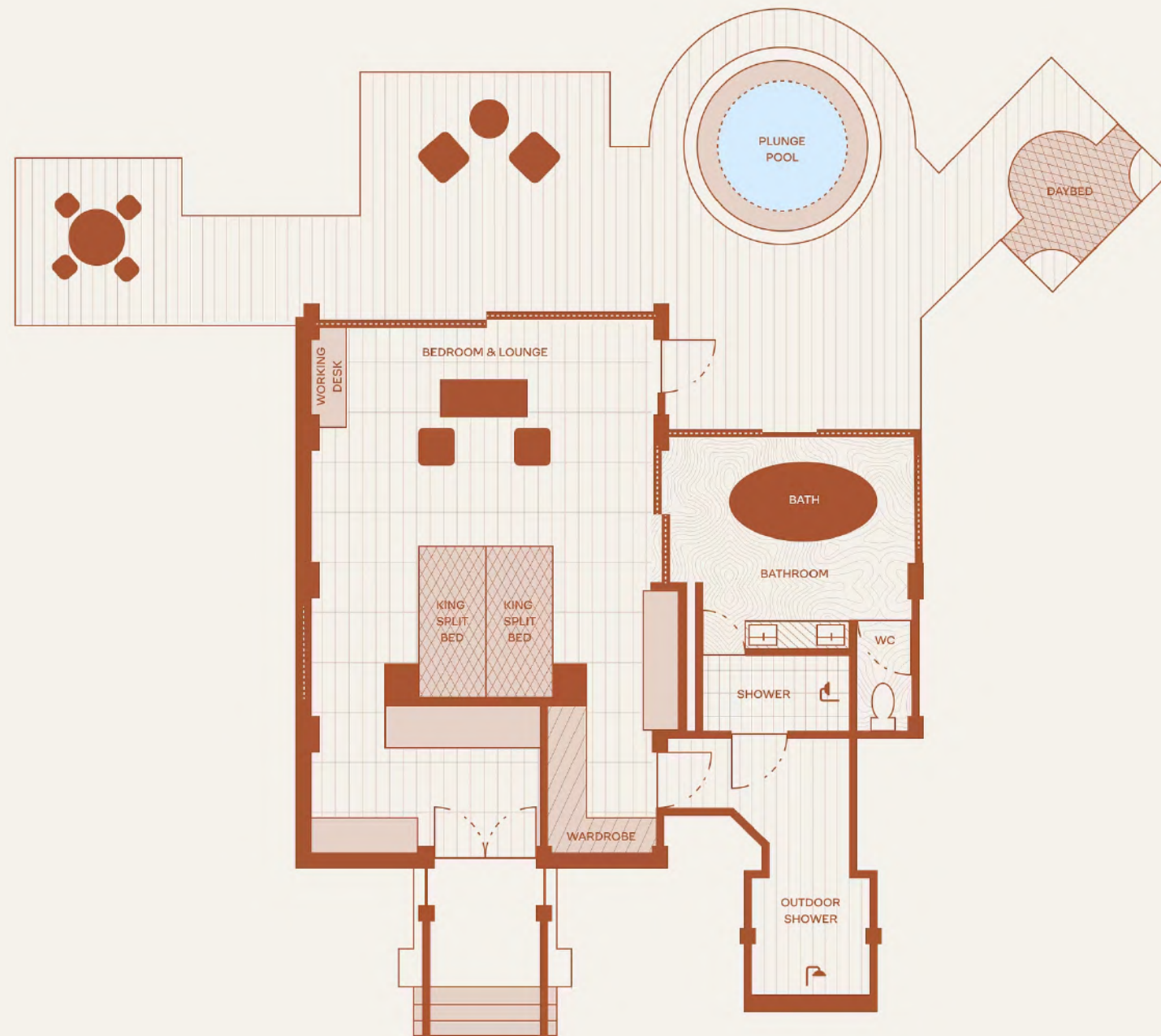


*"Wraparound private decks offer panoramic delta views."*



*The Bush Pavilions are spacious and spoiling*

# The Bush Pavilions



## BUSH PAVILION | SLEEPS 2 | 141 SQ M (1517 SQ FT)

The 10 Bush Pavilions are among the largest in the Okavango. Inside there's an aircon-cooled four poster, plus an ensuite bathroom with a tub for supreme comfort, while the outdoor shower and the plunge pool on the private terrace offer a unique experience – nature up close and personal.

Room Size	141 sq m (1517 sq ft)
Bed Configuration (King or Twin)	All rooms can be converted to a king or twins
Triple Rooms Available	Yes; subject to availability
Mini Bar	Yes
Tea and Coffee Station	Yes
Air Conditioning	Yes
Overhead Fan	Yes
Mosquito Net	Yes
Plug Type	Type G Plug, USB and USB Type C
Bath	Yes
Indoor Shower	Yes
Outdoor Shower	Yes
Hairdryer	Yes
Plunge Pool	Yes

# The Geoffrey Kent Suite



Maximum Number of Guests 6 (four adults, two children)

Room Size 636 sq m (6845 sq ft), 2 bedrooms

Bed Configuration (King or Twin) All rooms can be converted to a king or twins

Triple Rooms Available Yes; subject to availability

Mini Bar Yes

Tea and Coffee Station Yes

Air Conditioning Yes

Overhead Fan Yes

Mosquito Net Yes

Plug Type Type G Plug, USB and USB Type C

Bath Yes

Indoor Shower Yes

Outdoor Shower Yes

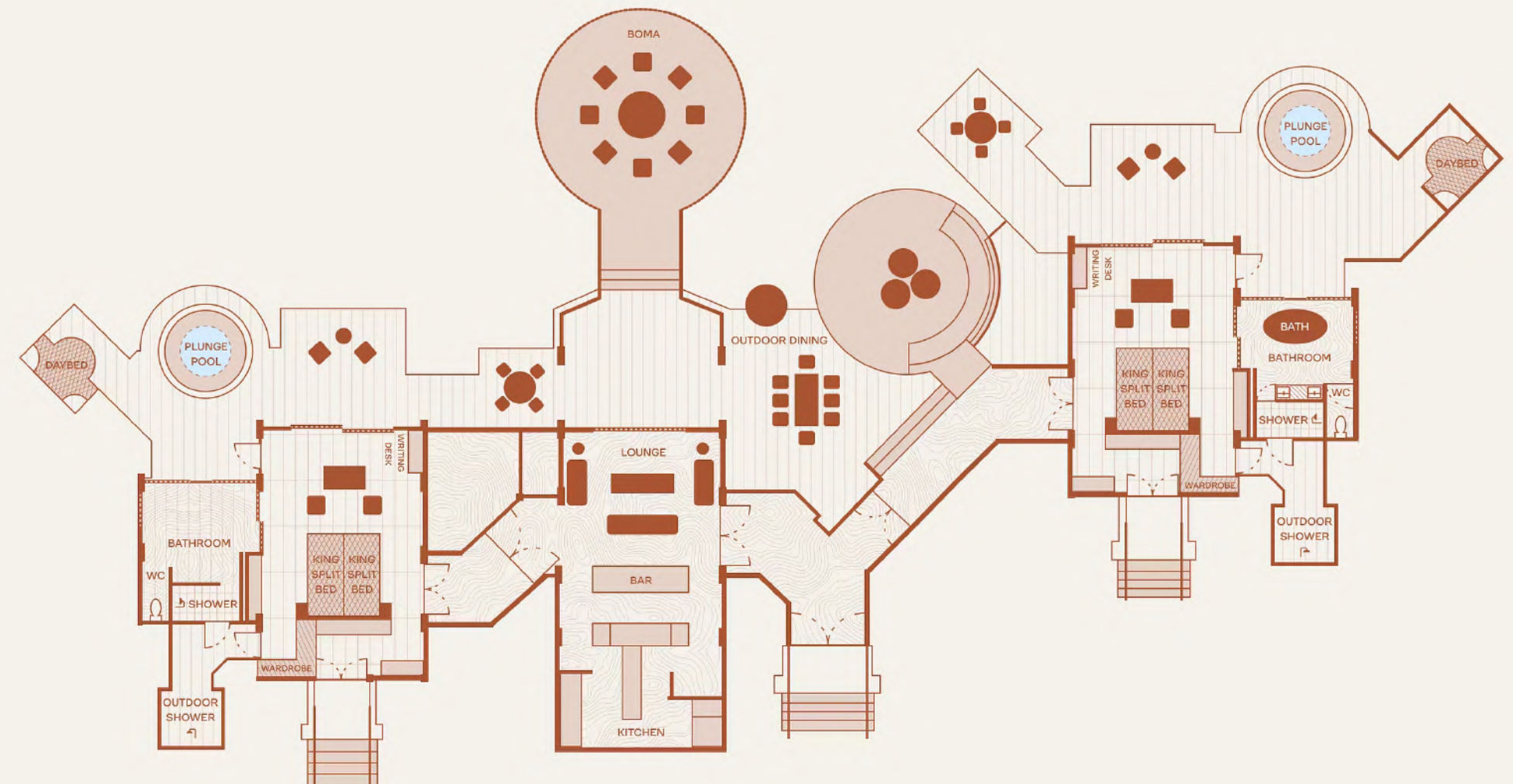
Hairdryer Yes

Plunge Pool Yes

Private Vehicle Yes

Private Chef Yes

Private Housekeeper Yes



## GEOFFREY KENT SUITE | SLEEPS 4-6 | 636 SQ M (6845 SQ FT)

This large and luxurious camp-within-a-camp is spread across two pavilions, with two ensuite bedrooms (additional beds are available for children in the lounge), a kitchen, dining room, lounge, bar, plunge pools and dedicated housekeeper, waiter and private guide.



*Breakfast on the deck as the delta springs to life*

# Food & Drink



Served with the vast, technicolor floodplain as a backdrop, the contemporary cuisine – prepared by the camp kitchen team using the best regional ingredients – is a feast for all the senses. Guests dine on the freshest salads, just-baked breads, grilled meats and herby vegetable dishes. Pre- and post-dinner drinks are enjoyed in the deeply comfortable seats of the main bar, or around the crackle and hiss of the firepit as night descends over the delta. As with all A&K Sanctuary lodges and camps, all food and drink is included (including premium alcohol).

- After an early-morning game drive, tuck into fresh fruit, pastries, eggs and steaming coffee served for breakfast out in the bush.
- Lunch is enjoyed back at the camp or picnic-style in the bush if you are out game-spotting.
- Although the camp is deep in the bush, the wine list is notable, so there's lots of choice for pre-dinner drinks or sundowners.
- Join the chef in making your own pizza in a traditional oven.
- Private dinners can be arranged on request.

*The food delivers on local flavor*



# Camp Location



Here in the world's largest inland delta the diversity of wildlife is staggering – from great hulking elephants to five-inch-long malachite kingfishers. It's a constantly changing scene as, between May and September, the grassy plains usually flood and are transformed into a 5,800-square-mile tapestry of waterways, lagoons and islands. One of the largest of these is Chief's Island, at the heart of the Moremi Game Reserve, which itself occupies around 40 percent of the UNESCO-protected Okavango Delta.

Due to the island's elevated position, this is where much of the area's wildlife retreats to when the water levels rise, so it offers some of the best game viewing in the region. The reserve is known for its resident and migratory bird life – look out for fish eagles, bee-eaters, and African skimmers – and gathering

mammals include elephant, hippo, buffalo, giraffe, lion, leopard, cheetah, impala, zebra, hyena, and wild dog, the area's most endangered predator.

In a prime spot on the north of Chief's Island, Chief's Camp is a thatched and stilted hideaway on the edge of a much-used watering hole, with all manner of sightings from dawn till dusk. While the name of the island, and the camp, comes from a time when this was the hunting ground of the local chief, there's no doubt that the animal kingdom rules here now.

*Hippos hunker down in the water*



*Sunrise is magical as mist hovers above the wetlands*

# Getting There



*A warm welcome awaits from the Chief's Camp team*



Maun Airport / Kasane Airport / Livingstone Airport to Chief's Airstrip

20-minute flight / 1-hour 30-minute flight / 2-hour flight



Chief's Airstrip to the Camp

30-minute drive

Please note, luggage restriction for light aircraft is 20kg/44lbs per person in a soft-sided bag, including hand-luggage.

# Experiences



From its prime, stilted perch on the largest island in the vast and pulsing Moremi Game Reserve, Chief's Camp gives unrivalled viewing of this incredibly diverse habitat. Twice-daily game drives get guests right into the thick of it: look out for elephant, hippo, buffalo, giraffe, lion, leopard, cheetah, impala, zebra, wild dog and hyena; while keen-eyed birdwatchers will home in on the teeming birdlife. But there's also the option to see it from the water – on seasonal excursions in traditional mokoros – or from the air, on scenic helicopter flights that will almost guarantee the most impressive photographs.



*Twice-daily game drives are highlights of the day*

## **GAME DRIVES**

Expert-led game drives in the early morning and late afternoon take guests into the heart of this unique and biodiverse habitat. The herds of elephant and buffalo kicking up dust will be easy to spot – extra points for sighting a stealth big cat or plucky bee-eater.



*Mokoros easily glide through the waterways*

## **MOKORO EXCURSIONS**

The most serene and authentic way to explore the greatest river delta on earth, season and conditions permitting, is to glide across it in a mokoro – the traditional punt-like canoe carved from the native jackalberry trees.



*The delta's epic scale can be appreciated from the skies*

## **HELICOPTER FLIGHTS**

While land and water excursions get guests within a whisker of the delta's wildlife, a fully personalized helicopter flight delivers widescreen views of its epic scale for exceptional photography opportunities. Note this is an additional cost.

# Wildlife & Nature

---

From prowling predators – cheetah, lion, leopard, hyena and the endangered African wild dog – to gathering herds of elephant, buffalo, hippo, giraffe, zebra and impala, the vibrant Moremi Game Reserve is a place of jaw-dropping diversity. It accounts for about 40 percent of the protected area of the Okavango Delta, so animals roam freely across its uniquely patchworked landscape, and many of Africa's most endangered species call it home.

With its profusion of permanent marshes and seasonal floodplains, the delta is also incredibly rich in birdlife, home to around 450 resident and migratory species (between November and April is the best time to spot the latter). Lilac-breasted rollers and fish eagles are among the most common sightings, while anyone catching a glimpse of the rare Pel's fishing owl will win extra points in bird-watching circles.

*Look out for lion cubs on the prowl*



*Wild dogs huddle with the pack*

# Your Chief's Camp Safari



*Herbivore herds on the move*

Days at Chief's Camp fall into a gentle rhythm of exploration and relaxation. It's all cleverly choreographed by an expert team so that the adrenalin-fuelled highs of an action-packed morning game drive segue into lazy evenings of delicious food and clinking nightcaps on the starlit deck.

#### **A TYPICAL DAY MIGHT INCLUDE:**

- **Wake-up Call** — Gently roused by soft light and birdsong, enjoy a tea or coffee on your own deck.
- **Breakfast** — A fresh, hearty breakfast served on the deck, with views of the watery wonderland all around.
- **Morning Activity** — Set out as the delta springs into life; spot elephants, predators and perhaps a rare bird.
- **Return to the camp** for a relaxed, outdoor lunch of seasonal, locally sourced ingredients. Alternatively, a delicious lunch can be arranged out in the bush.
- **Afternoon Activity** — Another opportunity to explore with your knowledgeable guide.
- **Sundowners** — Swap tales of the day's sightings in the wood-crafted main bar, or in one of the comfortable seating nooks around the boma.
- **Dinner** — End the day with a three-course dinner, and then gather around the firepit for stargazing.

# The Details



## HONEYMOON, ANNIVERSARIES & SPECIAL OCCASIONS

Romance and luxury are woven into each of our stays, but our Chief's Camp team adds an extra sprinkling of magic when it comes to special occasions. From a private dinner by the pool to brunch on a sandbank of the delta, when the season permits, the team creates once-in-a-lifetime experiences that celebrate a visit to the unique and cinematic setting of the Okavango Delta.

## FAMILIES WITH CHILDREN

We are excited to welcome children aged six and above at Chief's Camp, with a dedicated retreat specially designed for younger guests offering an immersive and educational experience. Expert guides will inspire a love of nature as they share their hands-on knowledge on everything from animal footprints and tracking to bush skills, meanwhile parents can enjoy uninterrupted game drives. For downtime back at base, there's a children's playroom featuring a TV, foosball table, bean bags, microscope and even animal skeletons to continue the fun of learning. Children aged 15 years and younger are required to share with an adult. A private vehicle must be booked for game drives for families with children aged six and younger.

## INCLUSIONS

- All meals, non-alcoholic and alcoholic beverages (including premium brands)
- Return transfers from/to the nearest local airstrip
- Game viewing activities including: game drives, and mokoro excursions
- Emergency medical evacuation
- Laundry services
- Park fees

## EXCLUSIONS

- International and domestic flights, landing fees
- Road transfers to and from other camps and lodges
- Travel insurance, boutique purchases, spa treatments, gratuities, and all other items of a personal nature
- Additional activities not listed



*A shaded deck is the best place for downtime*



*Spotting scopes are available to zoom in on the action*

# Travel Tips



## WHAT TO PACK

Clothing should be cool and comfortable; and colors should blend in with nature as much as possible. A fleece, sweater or warm jacket is advisable for morning and evening game drives. Long sleeves and long trousers for mornings and evenings due to mosquitoes. Sturdy and comfortable shoes are essential. A complimentary overnight laundry service is offered in the camp.

Accessories: Sunscreen, sunglasses and hats are essential. Good cameras are an absolute must, and guests will have Leica binoculars available for the duration of their stay. The camp also provides a torch as well as complimentary mosquito repellent and toiletries.

## HEALTH

Please discuss health precautions for your travel itinerary with a qualified health professional at least six weeks before departure. Those passing through countries that have been declared yellow-fever-infected areas must provide a Yellow Card, an international vaccination certificate, upon arrival in Botswana.

## MONEY & CREDIT CARDS

All extras can be paid for with Visa, Mastercard, and traveller's cheques. US dollars, British pounds, euros and South African rands are also accepted; however, change will be given in the local currency.

## GRATUITY GUIDELINES

Tipping and gratuities remain entirely at your discretion.

*Rhino have been seen around Chief's Island*



# Climate



No two months are the same on the ever-shrinking, ever-expanding Okavango Delta. And while it's impossible to predict the weather, guests might find it helpful to learn how a visit to Chief's Camp might differ from one week to the next: from the secret perks of the flood season to the best time to explore serenely in a canoe.



*Waterlilies cover the floodplains in February*



*Predators are always on the lookout*



*Seasonal excursions in a traditional mokoro*



*Lions are at their strongest come December*

## **JANUARY–MARCH**

Daytime temperatures hover around 30°C and the rainy season's short dramatic thunderstorms make for superb photography, while low visitor numbers mean a more private experience. January is peak breeding time for migratory birds; waterlilies flower in February; and March sees the start of the elephant rutting season.

## **APRIL–JUNE**

In the transition from the wet to the dry season, temperatures might drop from around 31°C in April to 25°C in June. As the landscape dries out, migratory bird species start to leave, but herds of buffalo, antelope and elephant swell in numbers – and with that come their big cat predators.

## **JULY–OCTOBER**

Botswana's dry season brings cool mornings, pleasant midday temperatures and hotter afternoons. As this coincides with the northern hemisphere summer, it's a busy season, but is also prime time for getting out to explore the delta in traditional mokoros (subject to water levels).

## **NOVEMBER–DECEMBER**

The start of sporadic showers once again transforms the landscape into a kaleidoscope of green. Temperatures might rise to around 33°C, and water levels begin to drop. This is when migratory birds once again return and lions are at their strongest, so there's a greater chance of seeing them on the hunt.

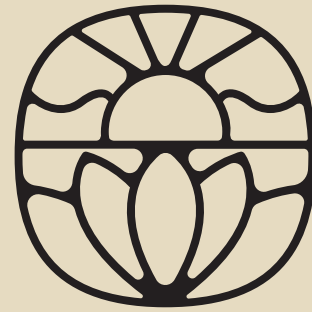


## JOURNEYS WITH PURPOSE

The A&K Philanthropy nonprofit network now spans 24 countries on all seven continents, positively impacting hundreds of thousands of lives and helping preserve some of the world's most precious ecosystems. Our initiatives focus on education, enterprise, health and environment, aiming to support and empower local communities to facilitate the protection of their surroundings, and to ensure that the people in the places where we travel are also benefitting directly from tourism.

*Conservation is at the heart of A&K Philanthropy projects*

*"As pioneers of the community-first approach to conservation, we continue to celebrate travel as a force for good."*



A&K SANCTUARY